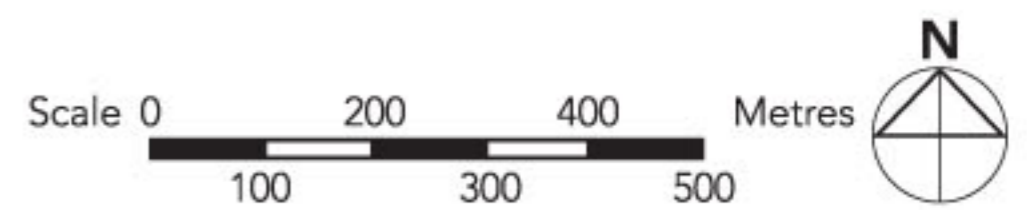
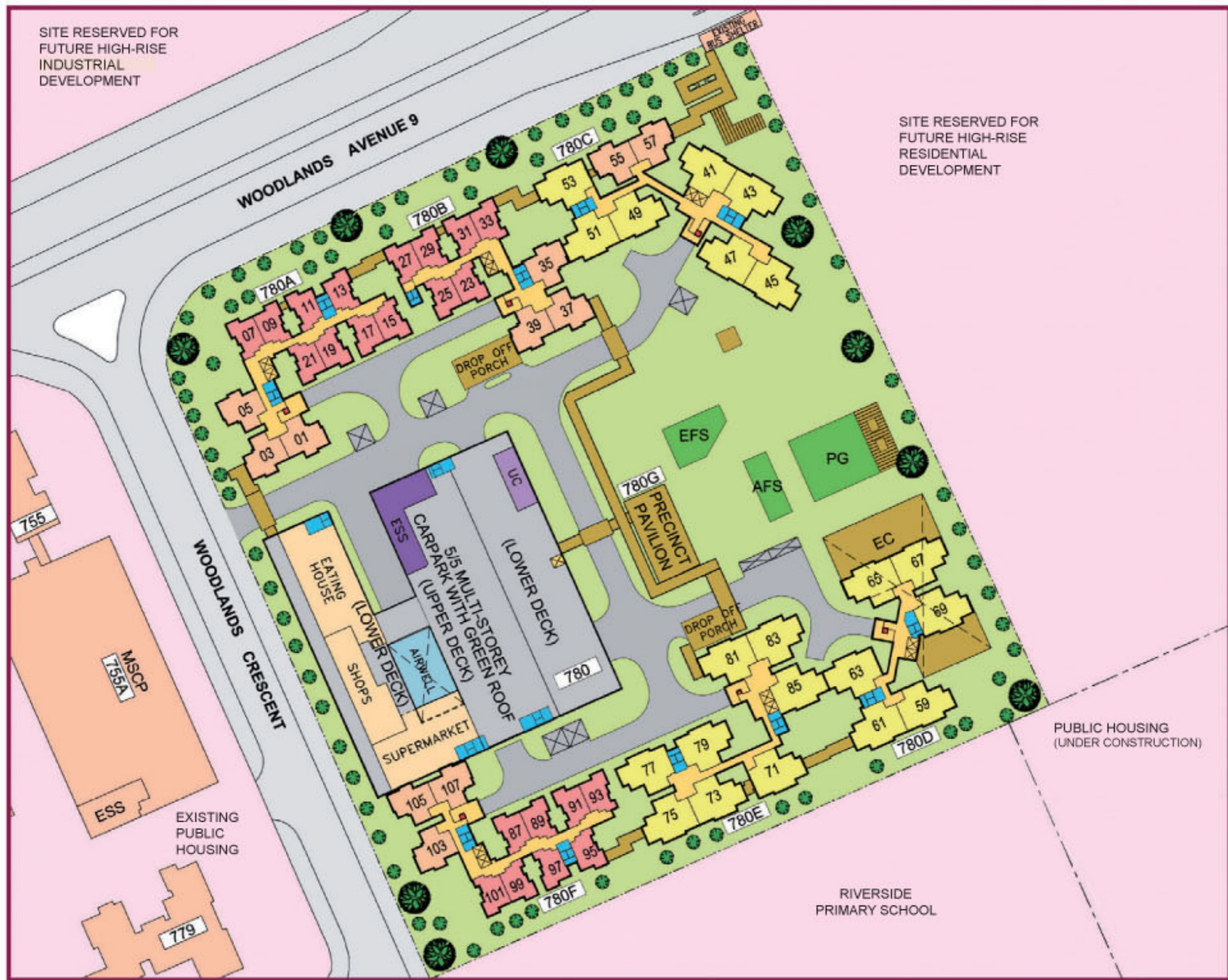


LEGEND:

- Contract with additional 2-Room Flats
- MRT Line & Station
- Future MRT Line & Station
- (u/c) Under Construction
- Future North-South Expressway (NSE)
- Under Construction/ Future Road





LEGEND:

- 3-Room
- 4-Room
- Surrounding Buildings
- Drop-off Porch / Linkway / Precinct Pavilion / Shelter at 1st storey
- Trellis / Pergola
- Children Playground (PG) / Adult Fitness Station (AFS) / Elderly Fitness Station (EFS)
- Electrical Sub-Station (ESS) at 1st Storey
- Utility Centre (UC) at 1st Storey
- Multi-Storey Carpark
- Air-well
- Open Space
- Staircase
- Reserved for / Existing Developments
- Driveway
- Education Centre (EC) at 1st Storey
- Eating house (EH) / Shop (S) / Supermarket (SM) at 1st Storey
- Centralised Refuse Chute
- Lift
- Service Bay



Applicants are encouraged to visit the place before booking a flat.

Block Number	Number of storeys	2 ROOM	3 ROOM	4 ROOM	Total	Lift Opens At
780A	16	120	35	-	155	every floor
780B	16	90	45	-	135	every floor
780C	16	-	30	105	135	every floor
780D	16	-	-	90	90	every floor
780E	16	-	-	119	119	every floor
780F	16	120	35	-	155	every floor
Total		330	145	314	789	

Standard Flats



LAYOUT IDEAS FOR 2-ROOM
APPROX. floor area 47 sqm
(Inclusive of Internal Floor Area 45 sqm and Air-Con Ledge)

GENERAL SPECIFICATIONS FOR WOODLANDS DEW

Foundation

Piled foundation.

Structure

Reinforced concrete structural framework with reinforced concrete slabs.

Roof

Reinforced concrete roof slab with precast concrete secondary roofing.

Walls

All external and internal walls are constructed with reinforced concrete / solid blocks / bricks with cement plastering / precast panels / precast lightweight concrete partitions.

Windows

Aluminium framed windows with tinted glass.

Doors

Entrance	: decorative solid timber door and metal gate
Bedroom	: laminated semi-solid timber door (Type D9a)
Bathroom/WC	: laminated semi-solid timber door for 3-room & 4-room (Type D9a) : acrylic panel folding door for 2-room
Household Shelter	: metal door
Service Yard	: aluminium framed door with glass

Finishes

Ceiling	: skim-coated or plastered and painted
Kitchen/Bathrooms/WC Wall	: glazed ceramic tiles
Other Walls	: skim-coated or plastered and painted
Living/Dining/Bedroom floor	: ceramic tiles with timber skirting #
Kitchen/Bathroom/WC floor	: ceramic tiles
Service Yard floor	: ceramic tiles with tile skirting
Household Shelter floor	: ceramic tiles

Please note that the flat list (provided to buyers who are invited to select a flat) will indicate if the floor finish has been provided for a particular unit.

Fittings

Quality Locksets.
Quality Sanitary Fittings.
Clothes Drying Rack.

Services

Gas services and concealed water supply pipes.
Concealed electrical wiring to lighting and power points (including water heater and air-conditioning points).
Television points.
Telephone points.

Important Notes:

- 1) The Household Shelter is designed for use as civil defence shelter. The walls, ceiling, floor and door of the Household Shelter shall not be hacked, drilled, altered or removed.
- 2) Air-con panel in the main bedroom will not be provided.
- 3) Any unused or unoccupied open spaces in front of or nearby / adjacent to the flat units are not available for purchase and that the HDB will not entertain any requests from the flat owners to purchase and / or enclose the unused or unoccupied open spaces.

You are advised to visit HDB's website at www.hdb.gov.sg for information on renovations rules.