

Woodlands Peak | Studio Apartments and 3-room Standard Flats



Artist's Impression

Bounded by Woodlands Ave 3 and Woodlands St 31, Woodlands Peak is located close to Marsiling MRT station. Towering at 33 storeys high, this development is named Woodlands Peak to reflect its commanding height. Choose from 222 units of Studio Apartments and 3-room Standard Flats.



Facilities at your doorstep

Within Woodlands Peak is a range of recreational and communal facilities. Children can have fun at the vehicular-free green spaces while their parents or grandparents exercise at the adult and elderly fitness stations.



Artist's Impression

A precinct pavilion provides a venue for group activities such as line dancing, while pockets of green spaces and resting shelters facilitate smaller-group interactions. A landscaped deck at the 2nd storey of the residential block provides a lovely venue where you can do some stretching exercises or relax while chatting with neighbours.

Vibrant living

At Woodlands Peak, you are just a stone's throw from Marsiling MRT station, Marsiling Point neighbourhood centre and Woodlands Polyclinic. For even more conveniences, head over to the Woodlands Regional Centre which hosts the vibrant Causeway Point, Woodlands Civic Centre, Woodlands MRT station and bus interchange. In addition, you are also well-served by the myriad of HDB heartland shops in Woodlands – click Where2Shop@HDB to find out more.



Causeway Point



Marsiling Point



Woodlands Polyclinic



A short walk from Woodlands Peak is the Fuchun Community Club. Cultivate new hobbies and forge friendships while having fun. If you prefer outdoor recreational activities and sports, you will find them at Woodlands Town Garden, Woodlands Waterfront and Woodlands sports hall, stadium and swimming complex.

Parents with school-going children will appreciate the wide range of schools in the town. Besides many primary and secondary schools, there is also Innova Junior College and Republic Polytechnic.



Fuchun Community Club



Woodlands Town Garden



Woodlands Town Garden



Woodlands Waterfront



Woodlands Sports Hall



Republic Polytechnic

Cosy homes

Choose from Studio Apartments and 3-room Standard flats. All units come with three-quarter height windows in the living/dining area.

The Studio Apartments are designed specially to meet the needs of those 55 years old and above. Each apartment will be in ready-to-move-in condition and is furnished with essentials such as elderly-friendly fixtures, ceramic floor tiles, a built-in wardrobe, kitchen cabinets and more.

The indicative price range of these Standard flats is tabulated below.



Flat Type	Floor Area (sqm)	Internal Floor Area (sqm)	No. of Units	Indicative Price Range (\$)
Studio Apt	37	35	64	\$76,000 - \$90,000
	47	45	63	\$95,000 - \$112,000
3-Room	67	65	95	\$167,000 - \$221,000

Notes:

- Floor area refers to the estimated area of the whole apartment, inclusive of the area of air-conditioner ledge.
- Internal floor area refers to the estimated area of the apartment computed based on the centre line of the apartment wall.
- The indicative prices do not include the cost of optional components. Actual selling prices will vary according to the attributes of the individual units at the time of selection.
- Studio Apartments are sold on 30-year lease. Prices are inclusive of the elderly-friendly fittings/finishes.

Financing a flat

Flat Type	Typical Selling Price	Applicants' Median Household Income	Eligible Additional CPF Housing Grant	Eligible Special CPF Housing Grant *	Monthly Instalment for 30-year Loan	Instalment to Income Ratio
3-Room	\$195,000	\$2,500	\$30,000	-	\$661	26%

* Applicants with incomes up to \$2,250 may qualify for the Special CPF Housing Grant if they apply for a 3-Room flat at Woodlands Peak

Optional Component Scheme

3-room flats come with floor finishes in the kitchen, household shelter, service yard and bathrooms. For added convenience, you may opt in to have floor finishes in the living/ dining room and bedrooms and/ or internal doors installed in your selected flat. The cost of installing these optional components will be added to the selling price of the flat.

Optional Component	Indicative Costs
	3-Room
Flooring for living / dining room and bedrooms	\$2,900
Internal doors*	\$2,280

Notes:

- * Studio Apartments come with internal doors and full floor finishes. Hence OCS is not applicable
- * 3-room flats : 4 internal doors (2 bedroom doors and 2 bathroom doors)

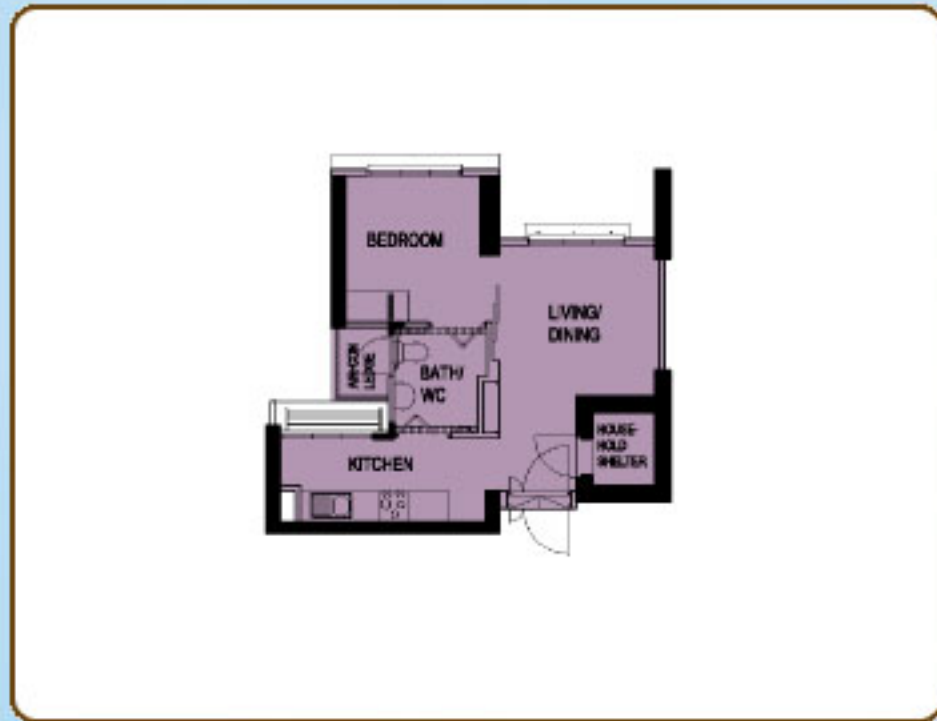
Estimated Completion Date and Waiting Time

Selection Date * (Median Month of Selection)	Jun to Dec 2011 (Sep 2011)
Estimated Completion Date	3rd Quarter 2015
Estimated Waiting Time	49 months

Notes:

- The waiting time is computed based on the median month of selection exercise.
- The actual completion date will depend on the progress of the construction.
- The Estimated Delivery Possession Date (EDPD) is 30 Sep 2016 for Woodlands Peak. The EDPD is an estimation of the date that HDB is required under the Agreement for Lease to deliver possession of the flat. Applicants will be informed the Actual Delivery Possession Date during the signing of the Agreement for Lease.

Typical Floor Plans



TYPICAL STUDIO APARTMENT (TYPE A) FLOOR PLAN
APPROX. FLOOR AREA 37 sqm
(Inclusive of Internal Floor Area 35 sqm and Air-Con Ledge)



TYPICAL STUDIO APARTMENT (TYPE B) FLOOR PLAN
APPROX. FLOOR AREA 47 sqm
(Inclusive of Internal Floor Area 45 sqm and Air-Con Ledge)



TYPICAL 3-ROOM FLOOR PLAN
APPROX. FLOOR AREA 67 sqm
(Inclusive of Internal Floor Area 65 sqm and Air-Con Ledge)

The coloured floor plans are not intended to demarcate the boundary of the flat.

Samples of Furnished Layout Plans



TYPICAL STUDIO APARTMENT (TYPE A) FLOOR PLAN
APPROX. FLOOR AREA 37 sqm
(Inclusive of Internal Floor Area 35 sqm and Air-Con Ledge)



TYPICAL STUDIO APARTMENT (TYPE B) FLOOR PLAN
APPROX. FLOOR AREA 47 sqm
(Inclusive of Internal Floor Area 45 sqm and Air-Con Ledge)



TYPICAL 3-ROOM FLOOR PLAN
APPROX. FLOOR AREA 67 sqm
(Inclusive of Internal Floor Area 65 sqm and Air-Con Ledge)