



## Costa Ris | 2-, 3-, 4- & 5-room Standard Flats

Bounded by Pasir Ris Drive 1, Pasir Ris Drive 8 and Pasir Ris Street 51, Costa Ris is sited conveniently close to Pasir Ris MRT station. This development consists of 17 residential blocks, each 13 storeys in height. Choose from 1,386 units of 2-, 3-, 4- and 5-room Standard Flats.

Pasir Ris means 'white sand' in Malay. Pasir Ris Town is named after the long stretch of sandy white beach along the north-east coastline of Singapore, facing Pulau Ubin. The name Costa Ris reflects the development's location in this coastal town and conveys the imagery of idyllic homes.



*Artist's Impression*

## Wholesome living

Engage in a multitude of activities at the landscaped deck at your doorstep. Children can play at the playground while adults and the elderly enjoy the fitness stations and hard court. If you wish to participate in group activities like line dancing, you can do so in the shelter of the precinct pavilion or amid the open green spaces beneath the stars. A Residents' Committee Centre provides another venue for social bonding.

Beneath the landscaped deck is a single-storey car park which is connected to every block. More parking spaces are available at another multi-storey car park within the development. Enjoy sheltered access to this multi-storey car park and drop-off porches via covered walkways from all residential blocks, whether rain or shine.

Commercial facilities like a supermarket, an eating house and some shops are located conveniently within Costa Ris. Those with young children will appreciate having a childcare centre within the development.



*Artist's Impression*

Golden Lily | Studio Apartments



Bounded by Pasir Ris Drive 1 and Pasir Ris Drive 4, Golden Lily is a 12-storey residential block comprising 185 units of Studio Apartments. These units are designed for those 55 years and above and come in a ready-to-move-in condition.

Named after the beautiful and refined lily flower, Golden Lily seeks to project the same qualities of freshness, elegance and poise. The façade of Golden Lily is inspired by the distinctive form of the lily stalk and features its white, green and yellow hues. "Golden" connotes growing old gracefully.

Located near the Pasir Ris neighbourhood centre and Pasir Ris East Community Club, Golden Lily offers you an independent and convenient lifestyle.



*Artist's Impression*



### A comfortable retreat

Set in soothing greenery, Golden Lily is a natural haven designed with your well-being in mind. Keep fit at the senior fitness corner or utilise the adjacent jogging/cycling track. Pursue group activities such as line dancing and tai-chi in the shelter of the precinct pavilion. Engage in friendly chatter with your neighbours amid the green spaces.

Golden Lily is also equipped with specially designed features to let residents feel comfortable and secure. Suitably located support grab bars at common areas and ramps assist residents in moving around the development.



*Artist's Impression*



## Vibrant surroundings

Renowned for its many leisure attractions, Pasir Ris town offers plenty of weekend getaway options such as Downtown East, Wild Wild Wet and Costa Sands Resort. If you prefer the great outdoors, there is always Pasir Ris Town Park where you can enjoy a picnic, have a workout or do some prawn fishing. Yet another leisure option is Pasir Ris Park which offers one of the largest outdoor playground in Singapore, pony rides, water sports and a carefully preserved 6-ha mangrove forest.



*Downtown East*



*Pasir Ris Town Park*



*Pasir Ris Town Park*



*Pasir Ris Park*



*Pasir Ris Park*



*Pasir Ris Park*

White Sands Shopping Centre is a vibrant destination to head to for shopping and dining delights. More choices can be found at Elias Mall and Pasir Ris neighbourhood centre. Find out more about these and other HDB heartland shops in Pasir Ris at [Where2Shop@HDB](mailto:Where2Shop@HDB). Book lovers can visit Pasir Ris Public Library to indulge in some reading.

For commuting, easy connectivity is provided by Pasir Ris MRT station and bus interchange and Tampines Expressway.

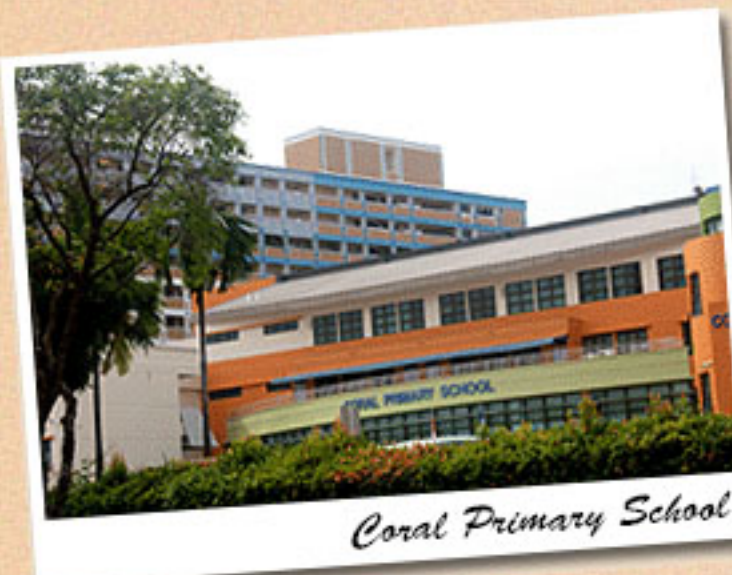
The range of school in the town includes Coral Primary and Secondary School, White Sands Primary School, Greenview Secondary School and Meridian Junior College.



*White Sands Shopping Centre*



*Elias Mall*



*Coral Primary School*



*Coral Secondary School*



*Meridian Junior College*



## Charming homes

Golden Lily offers Studio Apartments and Costa Ris offers 2-, 3-, 4-, and 5-room Standard Flats. All units come with three-quarter height windows in the living/dining area.

The Studio Apartments are designed specially to meet the needs of those 55 years old and above. Each apartment will be in ready-to-move-in condition and is furnished with essentials such as elderly-friendly fixtures, ceramic floor tiles, a built-in wardrobe, kitchen cabinets and more.

The indicative price range of these Standard flats is tabulated below.

Flat Type	Floor Area (sqm)	Internal Floor Area (sqm)	No. of Units	Indicative Price Range (\$)
Studio Apt	37	35	86	\$76,000 - \$83,000
	47	45	99	\$95,000 - \$102,000
2-Room	47	45	257	\$120,000 - \$143,000
3-Room	68	65	224	\$194,000 - \$225,000
4-Room	93	90	688	\$294,000 - \$347,000
5-Room	113	110	217	\$362,000 - \$436,000

### Notes:

- Costa Ris offers 2-/3-/4-/5-room flats whereas Golden Lily offers studio apartments.
- Floor area refers to the estimated area of the whole apartment, inclusive of the area of air-conditioner ledge.
- Internal floor area refers to the estimated area of the apartment computed based on the centre line of the apartment wall.
- The indicative prices do not include the cost of optional components. Actual selling prices will vary according to the attributes of the individual units at the time of selection.
- Studio Apartments are sold on 30-year lease. Prices are inclusive of the elderly-friendly fittings/finishes.

## Financing a flat

Flat Type	Typical Selling Price	Applicants' Median Household Income	Eligible Additional CPF Housing Grant	Monthly Instalment for 30-year Loan	Instalment to Income Ratio
3-Room	\$205,000	\$2,700	\$25,000	\$721	27%
4-Room	\$320,000	\$4,400	\$10,000	\$1,153	26%
5-Room	\$400,000	\$5,800	\$0	\$1,441	25%

## Optional Component Scheme

The 2-, 3-, 4- and 5-room Standard flats in Costa Ris come with floor finishes in the kitchen, household shelter, service yard and bathrooms. For added convenience, you may opt in to have floor finishes in the living/ dining room and bedrooms and/ or internal doors installed in your selected flat. The cost of installing these optional components will be added to the selling price of the flat.

Optional Component	Indicative Costs			
	2-Room	3-Room	4-Room	5-Room
Flooring for living / dining room and bedrooms	\$1,900	\$2,900	\$4,300	\$5,400
Internal doors*	\$550	\$2,280	\$2,830	\$2,830

### Notes:

- \* Studio Apartments come with internal doors and full floor finishes. Hence OCS is not applicable
- \* Bi-fold bathroom doors are provided for 2-room flats and they are non-optional
- \* 2-room flats : 1 internal door (1 bedroom door)
- \* 3-room flats : 4 internal doors (2 bedroom doors and 2 bathroom doors)
- \* 4-room flats : 5 internal doors (3 bedroom doors and 2 bathroom doors)
- \* 5-room flats : 5 internal doors (3 bedroom doors and 2 bathroom doors)

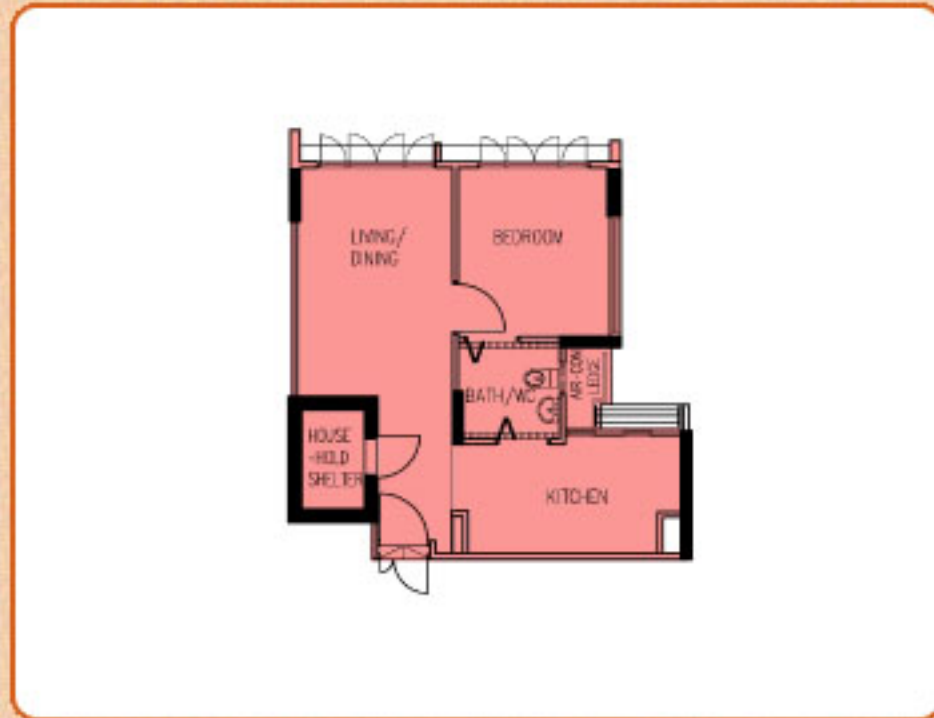
## Estimated Completion Date and Waiting Time

Project	Costa Ris	Golden Lily
Selection Date * (Median Month of Selection)	Jun to Dec 2011 (Sep 2011)	
Estimated Completion Date	3rd Quarter 2014	4th Quarter 2013
Estimated Waiting Time	31 to 35 months	28 months

### Notes:

- \* The waiting time is computed based on the median month of selection exercise.
- The actual completion date will depend on the progress of the construction.
- The Estimated Delivery Possession Date (EDPD) is 31 Aug 2015 for Costa Ris and 31 Dec 2014 for Golden Lily. The EDPD is an estimation of the date that HDB is required under the Agreement for Lease to deliver possession of the flat. Applicants will be informed the Actual Delivery Possession Date during the signing of the Agreement for Lease.

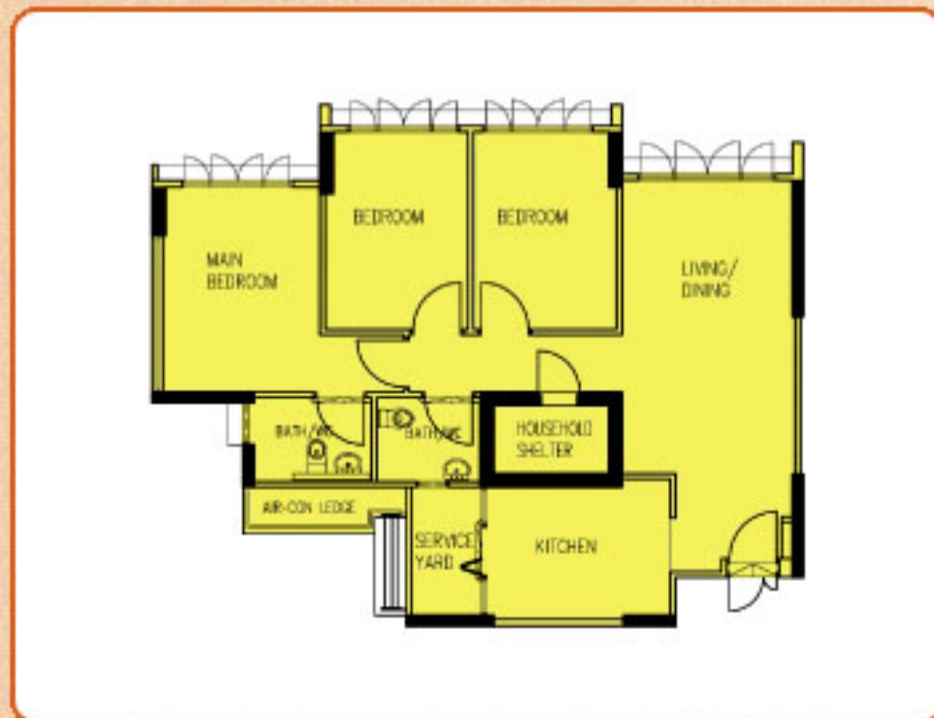
## Typical Floor Plans



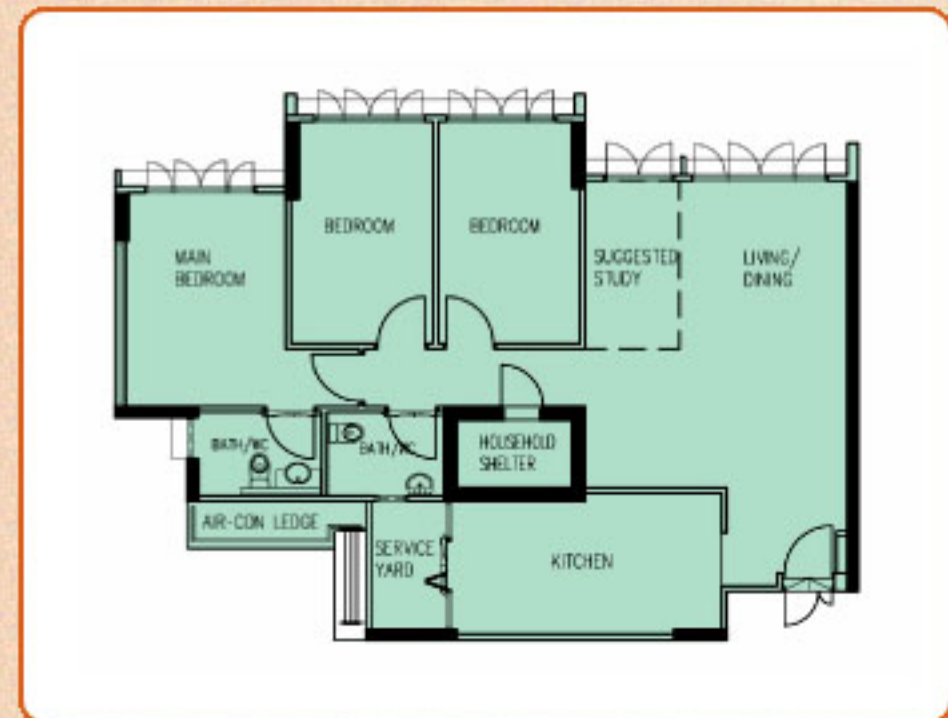
**TYPICAL 2-ROOM FLOOR PLAN**  
APPROX. FLOOR AREA 47 sqm  
(Inclusive of Internal Floor Area 45 sqm and Air-Con Ledge)



**TYPICAL 3-ROOM FLOOR PLAN**  
APPROX. FLOOR AREA 68 sqm  
(Inclusive of Internal Floor Area 65 sqm and Air-Con Ledge)



**TYPICAL 4-ROOM FLOOR PLAN**  
APPROX. FLOOR AREA 93 sqm  
(Inclusive of Internal Floor Area 90 sqm and Air-Con Ledge)



**TYPICAL 5-ROOM FLOOR PLAN**  
APPROX. FLOOR AREA 113 sqm  
(Inclusive of Internal Floor Area 110 sqm and Air-Con Ledge)

*The coloured floor plans are not intended to demarcate the boundary of the flat.*

## Samples of Furnished Layout Plans

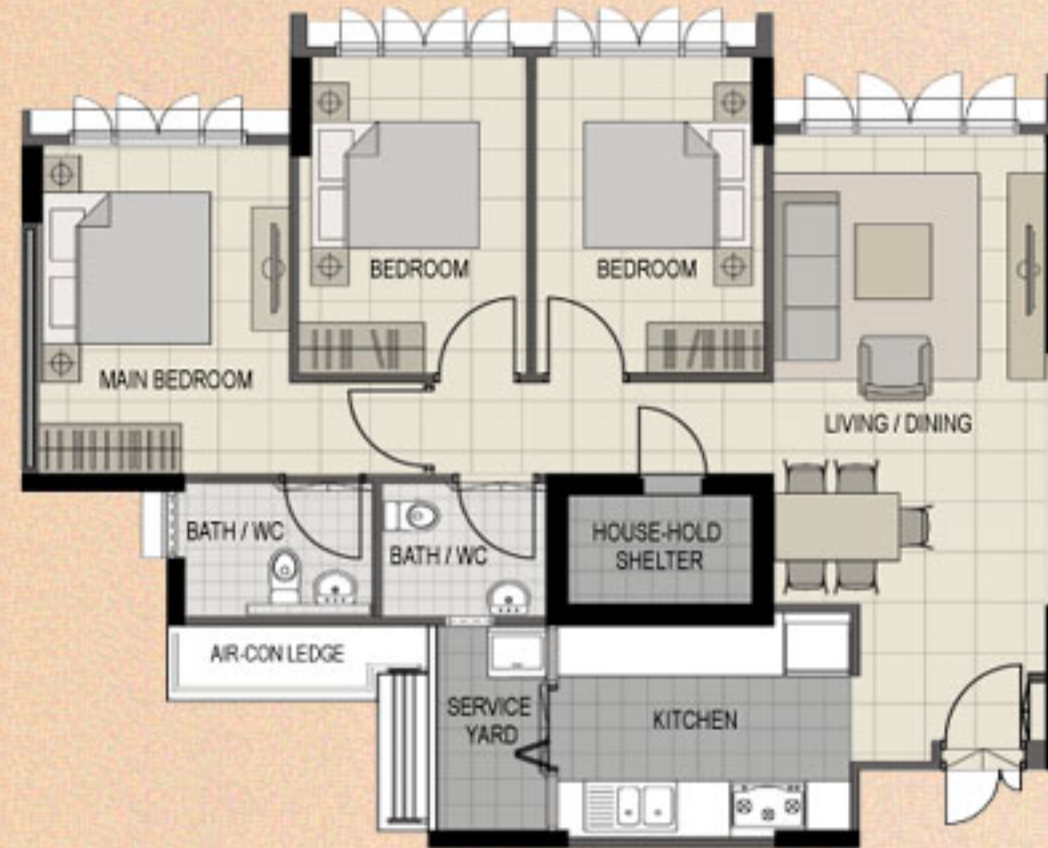


**TYPICAL 2-ROOM FLOOR PLAN**  
APPROX. FLOOR AREA 47 sqm  
(Inclusive of Internal Floor Area 45 sqm and Air-Con Ledge)

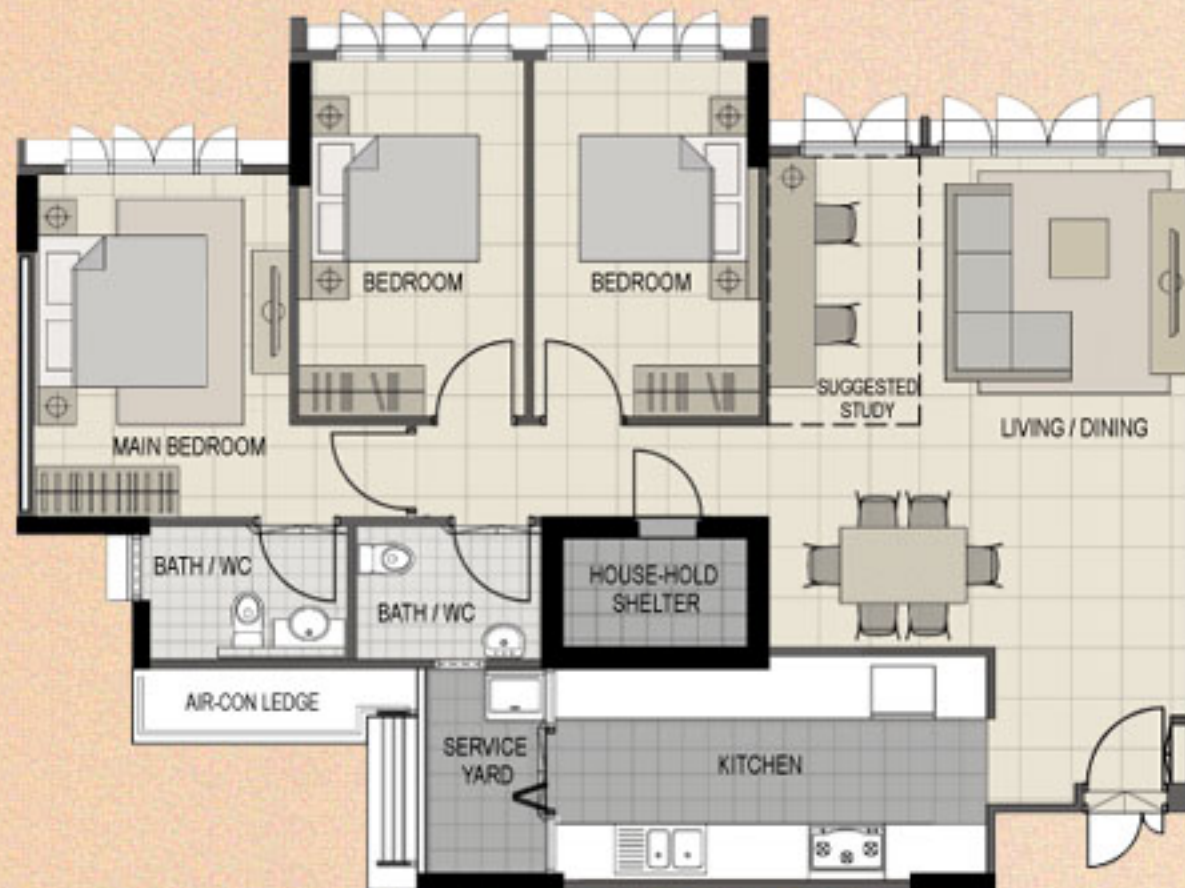


**TYPICAL 3-ROOM FLOOR PLAN**  
APPROX. FLOOR AREA 68 sqm  
(Inclusive of Internal Floor Area 65 sqm and Air-Con Ledge)

## Samples of Furnished Layout Plans



**TYPICAL 4-ROOM FLOOR PLAN**  
APPROX. FLOOR AREA 93 sqm  
(Inclusive of Internal Floor Area 90 sqm and Air-Con Ledge)



**TYPICAL 5-ROOM FLOOR PLAN**  
APPROX. FLOOR AREA 113 sqm  
(Inclusive of Internal Floor Area 110 sqm and Air-Con Ledge)

## Typical Floor Plans



**TYPICAL STUDIO APARTMENT (TYPE A) FLOOR PLAN**  
APPROX. FLOOR AREA 37 sqm  
(Inclusive of Internal Floor Area 35 sqm and Air-Con Ledge)



**TYPICAL STUDIO APARTMENT (TYPE B) FLOOR PLAN**  
APPROX. FLOOR AREA 47 sqm  
(Inclusive of Internal Floor Area 45 sqm and Air-Con Ledge)

*The coloured floor plans are not intended to demarcate the boundary of the flat.*



## Samples of Furnished Layout Plans



**TYPICAL STUDIO APARTMENT (TYPE A) FLOOR PLAN**  
APPROX. FLOOR AREA 37 sqm  
(Inclusive of Internal Floor Area 35 sqm and Air-Con Ledge)



**TYPICAL STUDIO APARTMENT (TYPE B) FLOOR PLAN**  
APPROX. FLOOR AREA 47 sqm  
(Inclusive of Internal Floor Area 45 sqm and Air-Con Ledge)