

Golden Daisy | Studio Apartments



Located along Bukit Batok Street 21, Golden Daisy is a 20-storey residential block comprising 180 units of Studio Apartments.

Golden Daisy is named after the brightly coloured flowers to give the development a cheerful and refreshing appeal. The building façade also has a series of rhythmic bands in hues of yellow and orange to echo the colours of the flowers.



Facilities for active living

The development features a beautiful landscape deck at the second storey which serves as an urban sanctuary for residents. Here, you can choose to exercise at the elderly fitness station or relax at the seats, all while enjoying the surrounding greenery. This deck also offers a seamless connection to an existing children's playground and elderly fitness station located next to the development. A precinct pavilion at the first storey serves as an ideal destination for larger gatherings.



The development has specially designed features to let residents feel comfortable and secure. Suitably located support grab bars at common areas and ramps assist residents in moving around the place with ease.



Amenities for a wholesome lifestyle



West Mall



Look forward to a wide range of amenities within Bukit Batok town to cater to your various needs. Located within the town centre, West Mall shopping centre provides a vibrant destination for one-stop shopping and dining options. The Bukit Batok Public Library located within the mall will be a delight for book lovers. More commercial facilities can be found at the nearby Bukit Batok East Point, an HDB neighbourhood centre. Find out more about it and other HDB heartland shops in Bukit Batok at Where2Shop@HDB.

For leisurely pursuits, the Bukit Batok swimming complex, Bukit Batok Community Club and Bukit Batok East Community Club are within easy access. Nature lovers will be spoilt for choice with the wide range of large scenic parks located within town for you to enjoy. These include the beautiful Bukit Batok Nature Park, Bukit Batok Town Park (Little Guilin) and Bukit Batok Hillside Park.



Bukit Batok Town Park (Little Guilin)



Bukit Batok Swimming Complex

Residents can look forward to effortless commuting to the rest of the island with the PIE located just minutes away. The Bukit Batok MRT Station and bus interchange are also conveniently located within the town centre.

There are several schools found near the development like Keming Primary School, Bukit View Primary and Bukit View Secondary School.



Bukit Batok MRT Station



Bukit View Secondary School



Keming Primary School

Indicative Price Range



The Studio Apartments are designed specially to meet the needs of those 55 years old and above. At a size of 35 sqm or 45 sqm, each apartment will be in ready-to-move-in condition and is furnished with essentials such as elderly-friendly fixtures, ceramic floor tiles, a built-in wardrobe, kitchen cabinets and more. These units come with three-quarter height windows in the living/dining area, as well as in the bedrooms.

The indicative price range of these apartments is tabulated below.

Flat Type	Floor Area (sqm)	Internal Floor Area (sqm)	No. of Units	Indicative Price Range (\$)
Studio Apartment	37	35	90	\$83,000 - \$94,000
	47	45	90	\$105,000 - \$118,000

Notes:

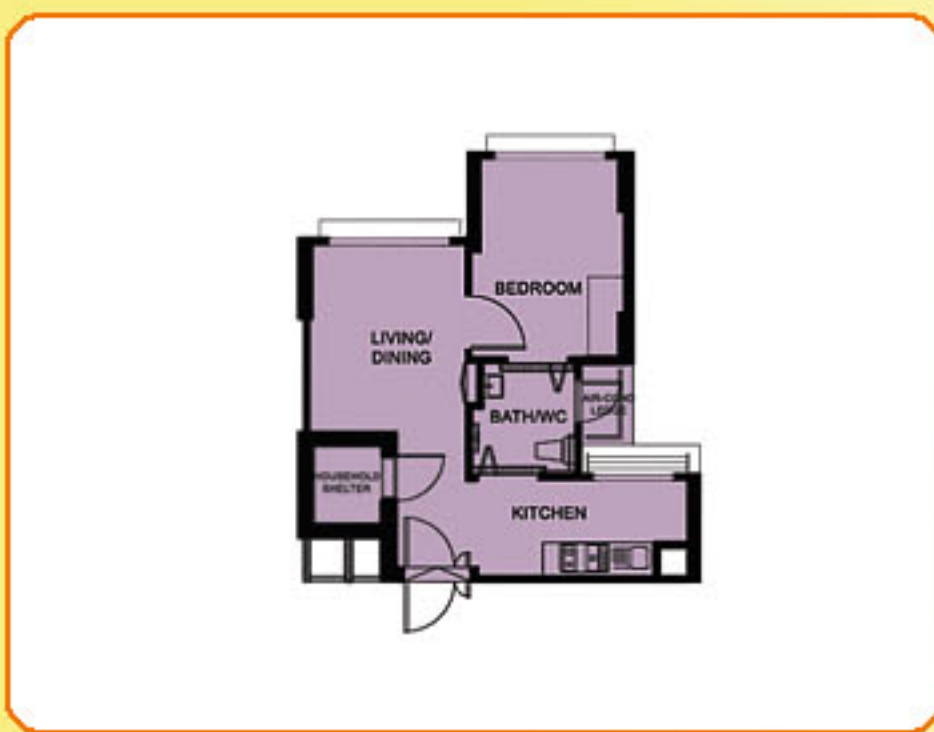
- (a) Floor area refers to the estimated area of the whole apartment, inclusive of the area of air-conditioner ledge.
- (b) Internal floor area refers to the estimated area of the apartment computed based on the centre line of the apartment wall.
- (c) Studio Apartments are sold on 30-year lease. Prices are inclusive of the elderly-friendly fittings/finishes.

Estimated Completion Date

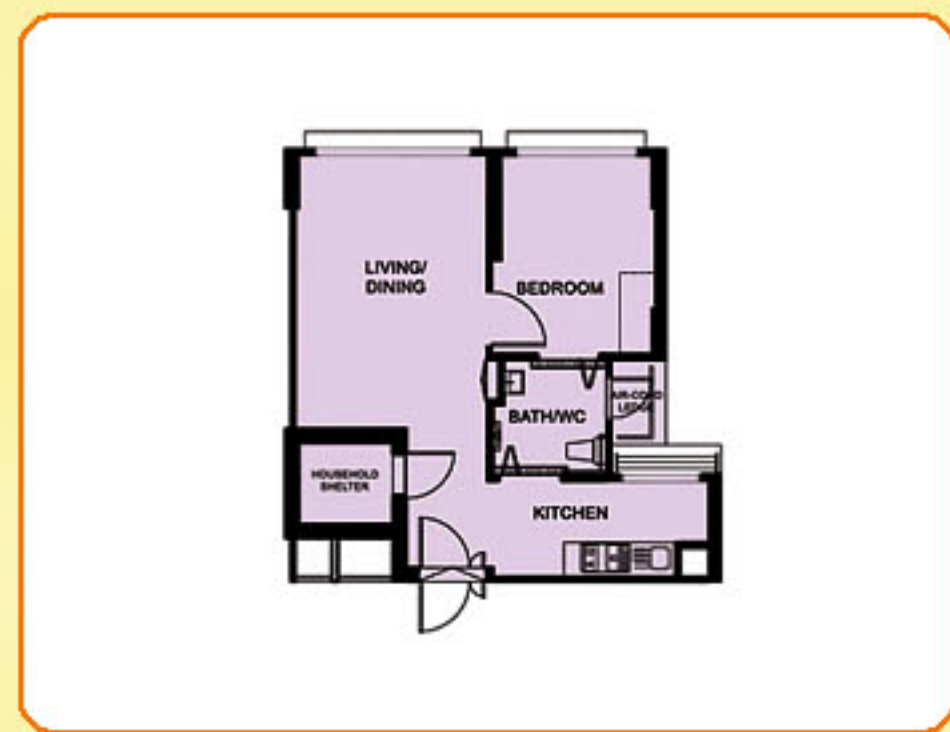
Estimated Completion Date	Estimated Delivery Possession Date (EDPD)
1Q 2014	31 Mar 2015

The actual completion date will depend on the progress of construction. The Estimated Delivery Possession Date (EDPD) is an estimate of the date that HDB is required under the Agreement for Lease to deliver possession of the flat. Applicants will be informed of the actual Delivery Possession Date during the signing of the Agreement for Lease.

Typical Floor Plans



TYPICAL STUDIO APARTMENT (TYPE A) FLOOR PLAN
APPROX. FLOOR AREA 37 sqm
(Inclusive of Internal Floor Area 35 sqm and Air-Con Ledge)



TYPICAL STUDIO APARTMENT (TYPE B) FLOOR PLAN
APPROX. FLOOR AREA 47 sqm
(Inclusive of Internal Floor Area 45 sqm and Air-Con Ledge)

The coloured floor plans are not intended to demarcate the boundary of the flat.

Samples of Furnished Layout Plans



TYPICAL STUDIO APARTMENT (TYPE A) FLOOR PLAN
APPROX. FLOOR AREA 37 sqm
(Inclusive of Internal Floor Area 35 sqm and Air-Con Ledge)



TYPICAL STUDIO APARTMENT (TYPE B) FLOOR PLAN
APPROX. FLOOR AREA 47 sqm
(Inclusive of Internal Floor Area 45 sqm and Air-Con Ledge)