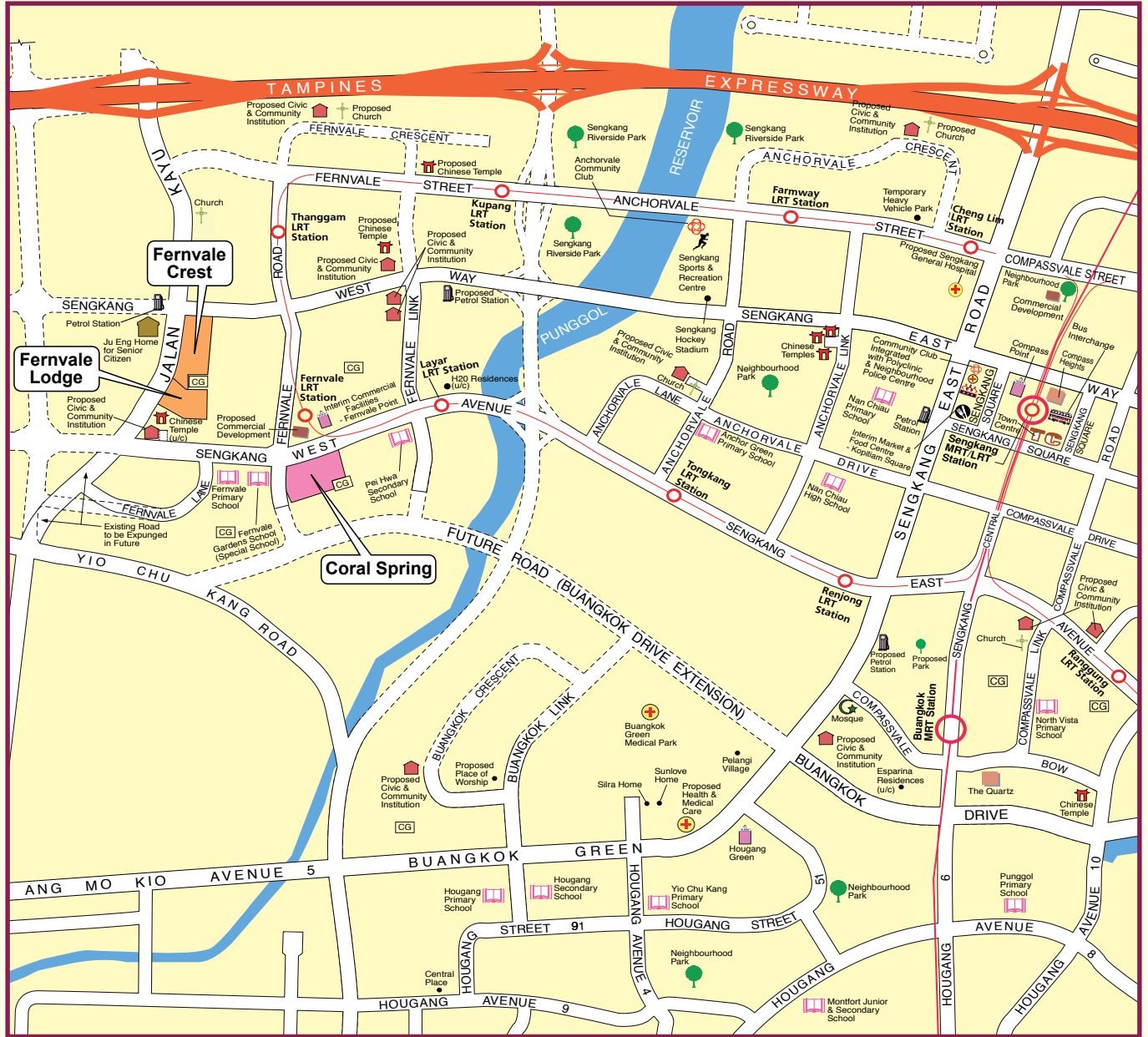


SENGKANG Town Map



LEGEND:

- Contract with Premium Flats
- Contracts with Standard Flats
- MRT Line & Station
- LRT Line & Station
- Common Green
- Under Construction
- Future Road

Scale 0 200 400 600 800 Metres



Notes:

All proposed developments are subject to change and planning approval.
 Proposed Civic & Community Institution includes examples like Community Centre/Club, Association, Home for the Aged, etc., subject to change and planning approval.
 Proposed Place of Worship includes examples like Church, Mosque, Chinese Temple, Hindu Temple, etc., subject to change and planning approval.
 Proposed Health & Medical Care (eg. Nursing Home), subject to change and planning approval.

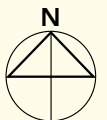
The information contained herein is subject to change at any time without notice and cannot form part of an offer or contract. The proposed facilities and their locations as shown are only estimates. The proposed facilities may include other ancillary uses allowed under URA's prevailing Development Control guidelines. For example, places of worship may also include columbarium as an ancillary use, while community centres may also include childcare centres. The implementation of the facilities is subject to review by the Government or competent authorities. While reasonable care has been taken in providing this information, HDB shall not be responsible in any way for any damage or loss suffered by any person whether directly or indirectly as a result of reliance on the said information or as a result of any error or omission therein.

Coral Spring



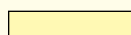







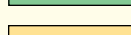
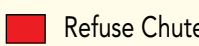





Sengkang N4 C3 Premium Flats

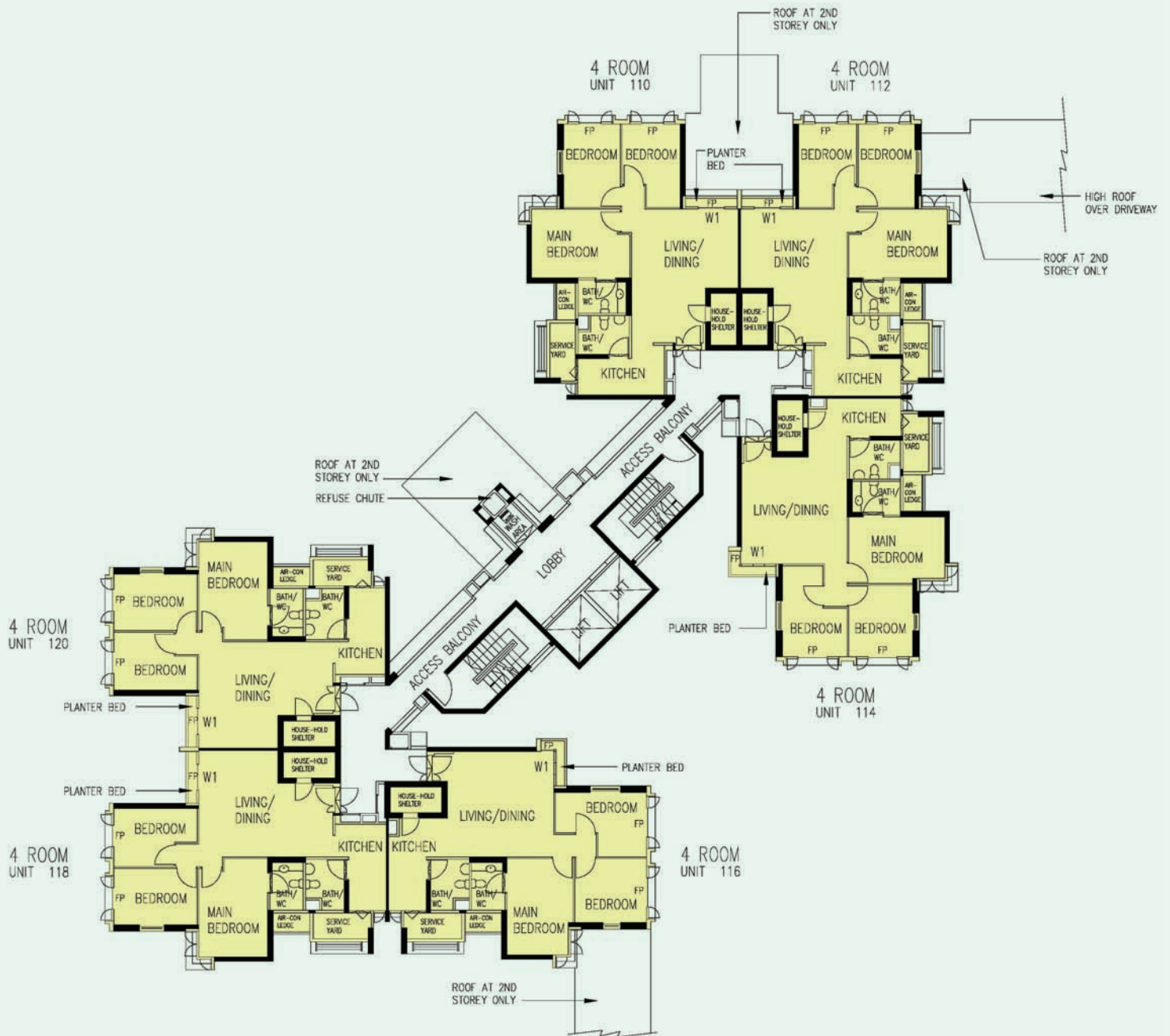
Scale 0 20 40 60 Metres



LEGEND:

	4 - Room		Carparking
	Surrounding Buildings		Open Space
	Linkway / Precinct Pavilion / Pergola / Drop-Off Porch / Shelter / Trellis		Drainage Reserve
	Reserved for / Existing Development		Staircase
	Children Playground (PG) / Hardcourt (HC) / Fitness Station (FS)		Service Bay
	Future Community Facilities at 1st Storey		Refuse Chute
	Electrical Substation (ESS) at 1st Storey		Lift
	Utility Centre (UC) at 1st Storey		

The information contained herein is subject to change at any time without notice and cannot form part of an offer or contract. The proposed facilities and their locations as shown are only estimates. The proposed facilities may include other ancillary uses allowed under URA's prevailing Development Control guidelines. For example, places of worship may also include columbarium as an ancillary use, while community centres may also include childcare centres. The implementation of the facilities is subject to review by the Government or competent authorities. While reasonable care has been taken in providing this information, HDB shall not be responsible in any way for any damage or loss suffered by any person whether directly or indirectly as a result of reliance on the said information or as a result of any error or omission therein.



LEGEND:

4 Room

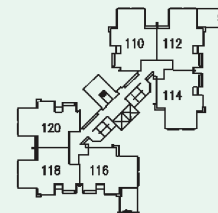
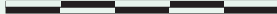
W1 - Three Quarter Height Window (approx. 500mm high parapet wall)

BW - Bay Window (approx. 500mm high parapet wall)

FP - Fixed Glass Panel (1000mm width x 1400mm height max)

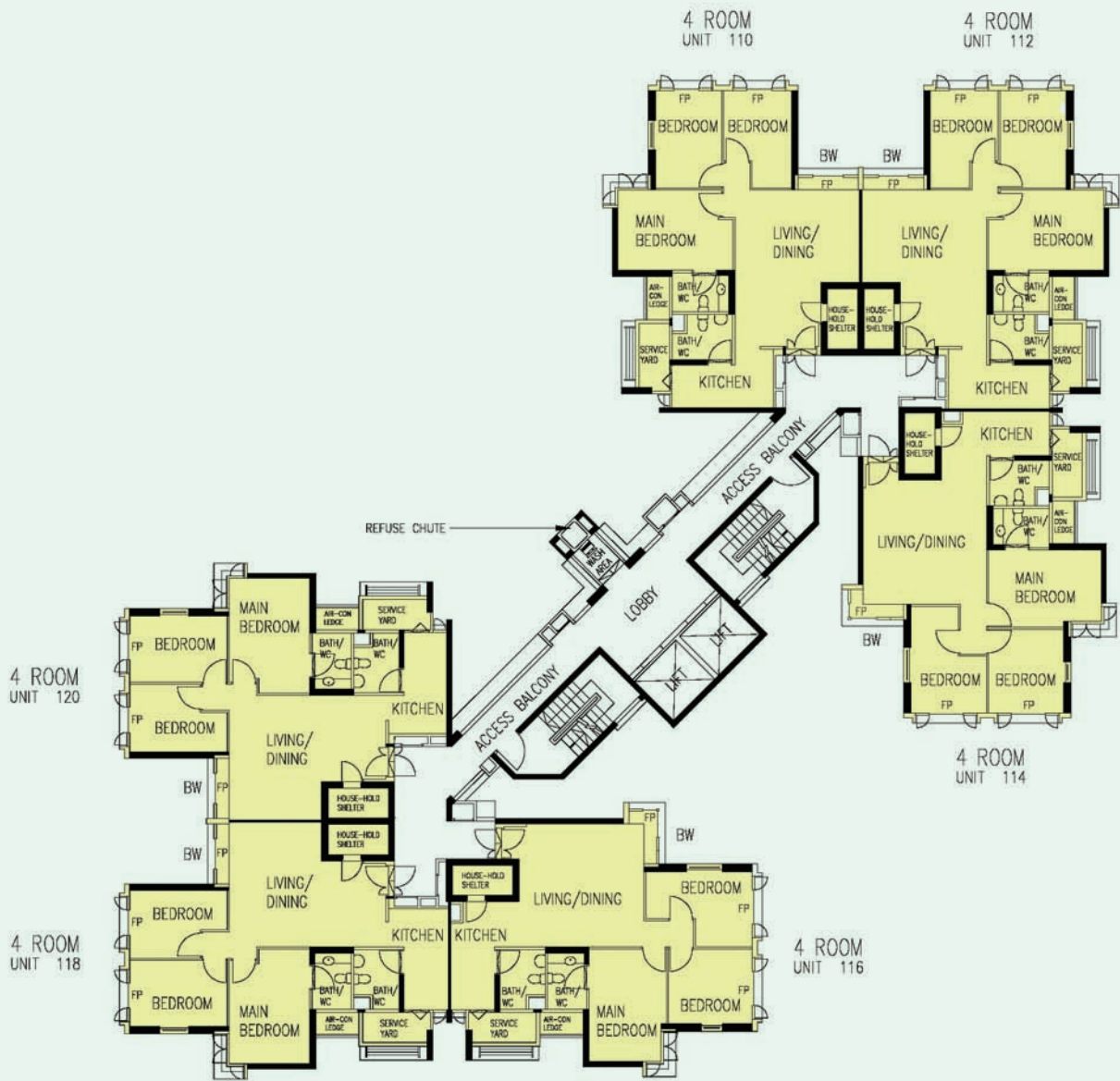
Unless otherwise indicated all windows will be standard height windows.

SCALE 0 2 4 6 8 10 METRES



2ND TO 9TH STOREY FLOOR PLAN BLOCK 410A

The coloured floor plan is not intended to demarcate the boundary of the flat.



LEGEND:

4 Room

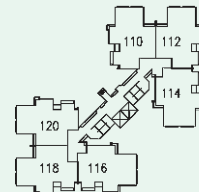
W1 - Three Quarter Height Window (approx. 500mm high parapet wall)

BW - Bay Window (approx. 500mm high parapet wall)

FP - Fixed Glass Panel (1000mm width x 1400mm height max)

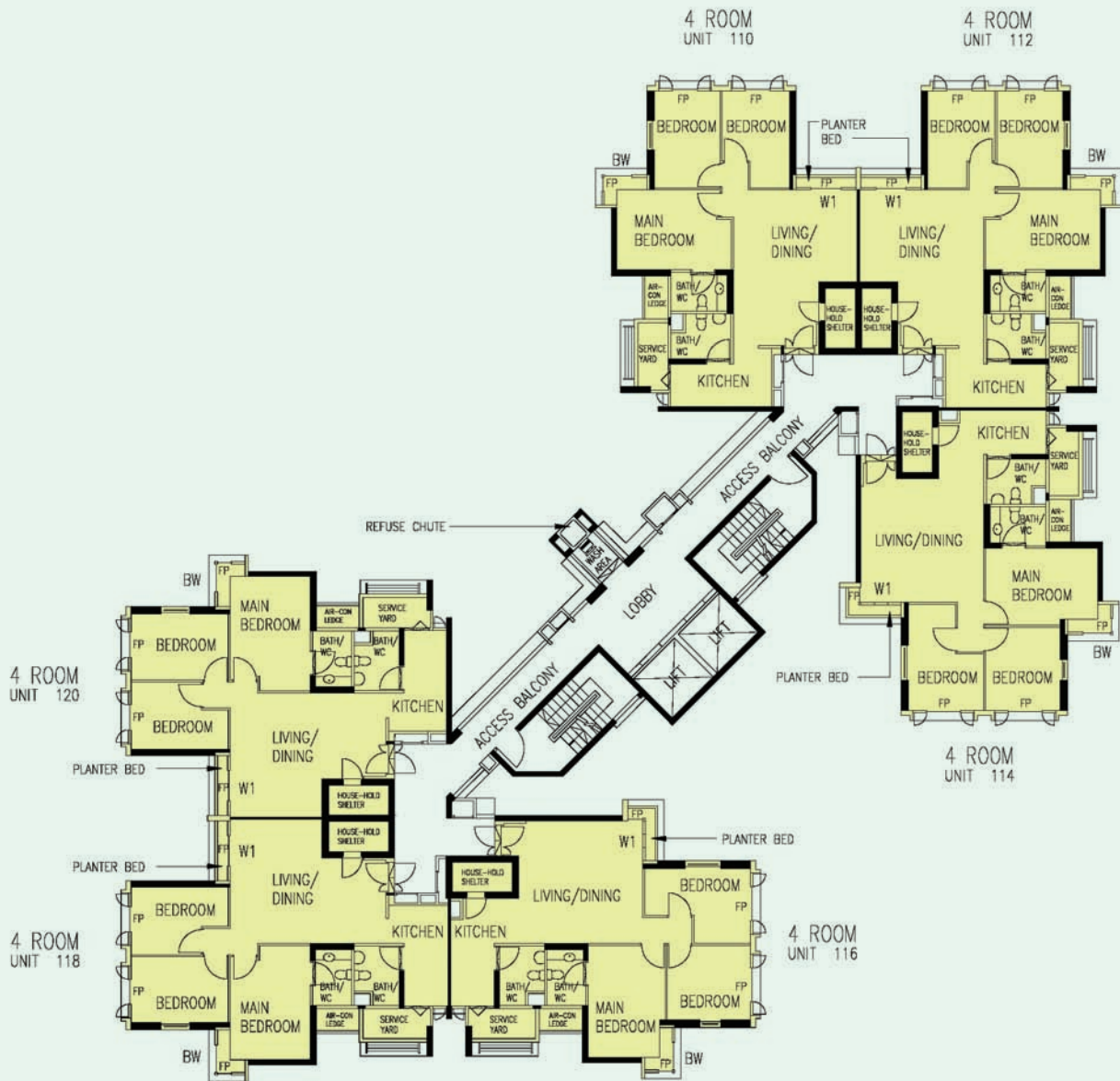
Unless otherwise indicated all windows will be standard height windows.

SCALE 0 2 4 6 8 10 METRES



10TH TO 17TH STOREY FLOOR PLAN BLOCK 4-10A

The coloured floor plan is not intended to demarcate the boundary of the flat.



LEGEND:

4 Room

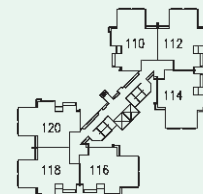
W1 - Three Quarter Height Window (approx. 500mm high parapet wall)

BW - Bay Window (approx. 500mm high parapet wall)

FP - Fixed Glass Panel (1000mm width x 1400mm height max)

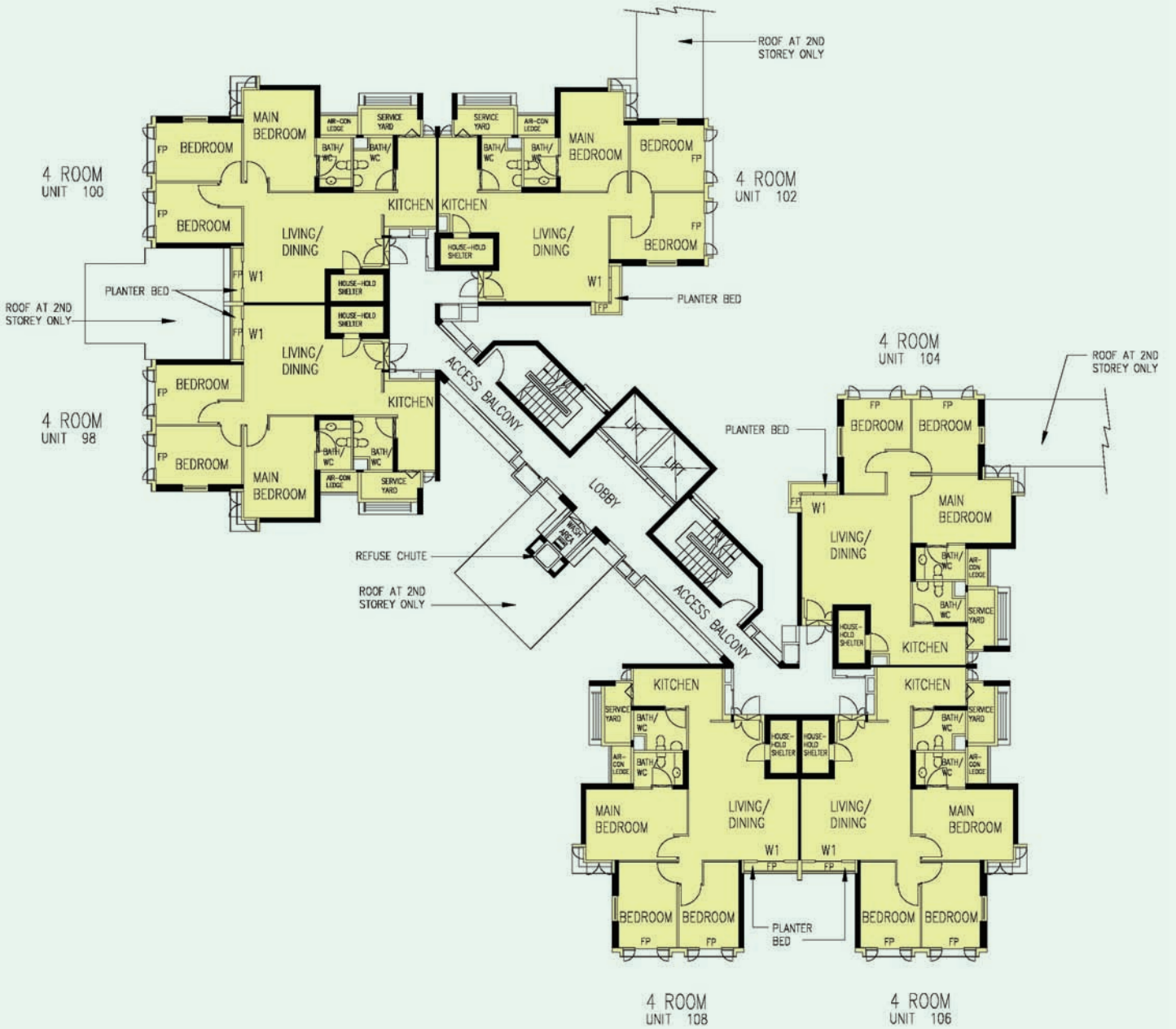
Unless otherwise indicated all windows will be standard height windows.

SCALE 0 2 4 6 8 10 METRES



18TH TO 25TH STOREY FLOOR PLAN BLOCK 410A

The coloured floor plan is not intended to demarcate the boundary of the flat.



LEGEND:

4 Room

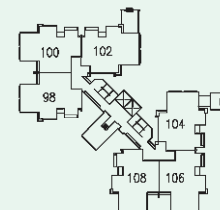
W1 - Three Quarter Height Window (approx. 500mm high parapet wall)

BW - Bay Window (approx. 500mm high parapet wall)

FP - Fixed Glass Panel (1000mm width x 1400mm height max)

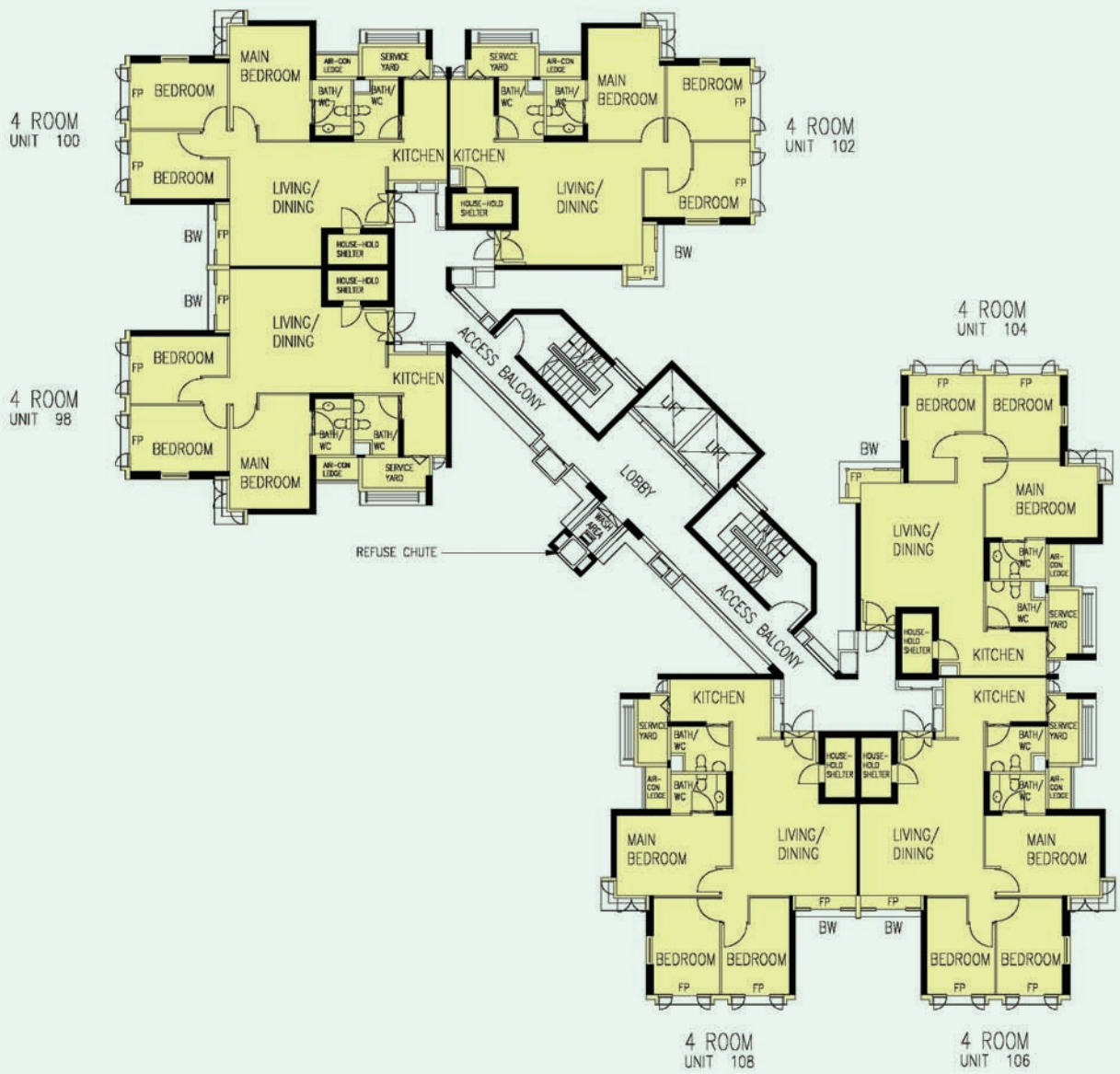
Unless otherwise indicated all windows will be standard height windows.

SCALE 0 2 4 6 8 10 METRES



2ND TO 9TH STOREY FLOOR PLAN BLOCK 410B

The coloured floor plan is not intended to demarcate the boundary of the flat.



LEGEND:

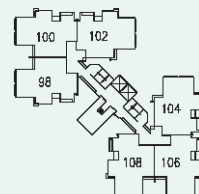
4 Room

W1 - Three Quarter Height Window (approx. 500mm high parapet wall)

BW - Bay Window (approx. 500mm high parapet wall)

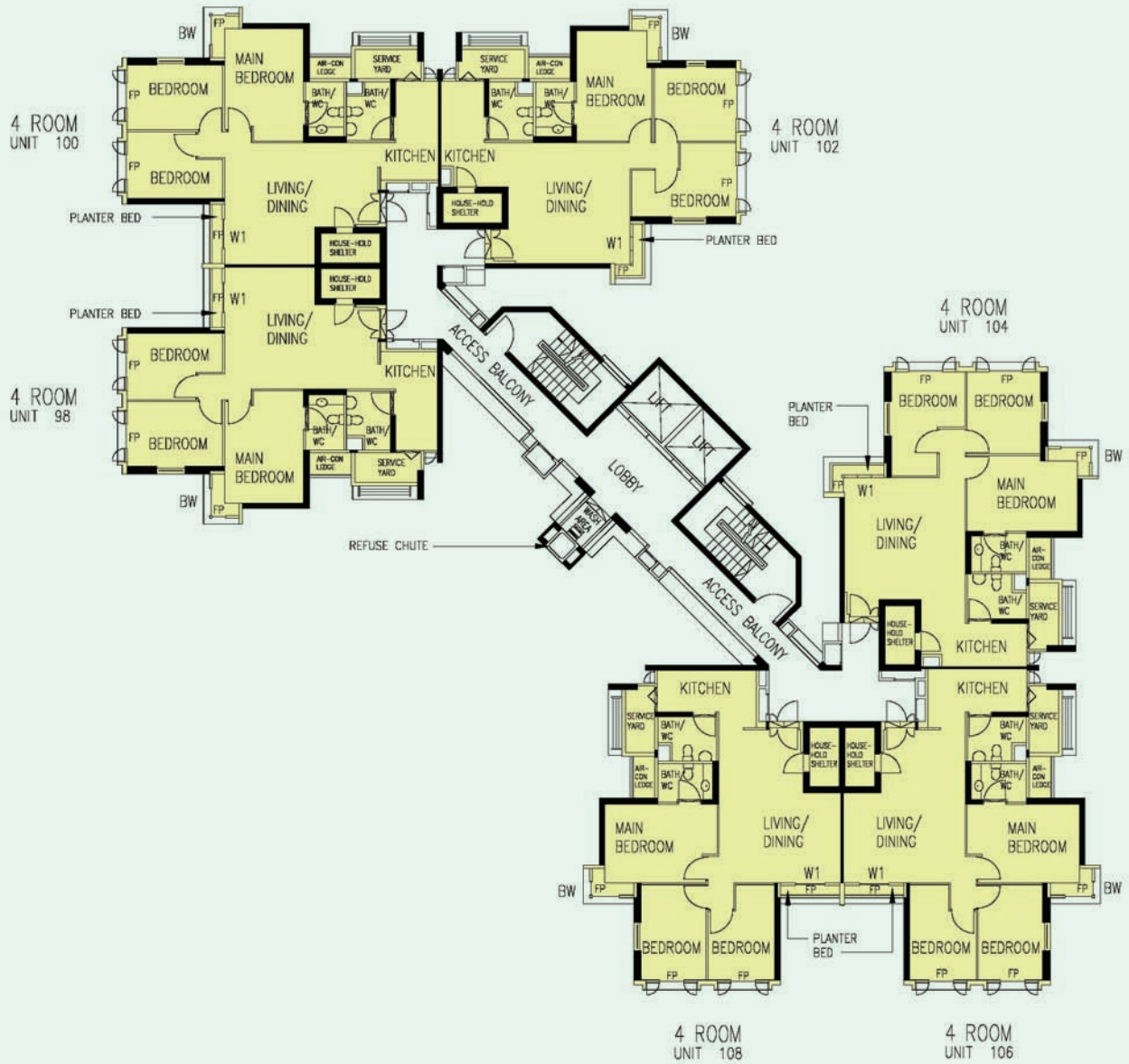
FP - Fixed Glass Panel (1000mm width x 1400mm height max)

Unless otherwise indicated all windows will be standard height windows.



10TH TO 17TH STOREY FLOOR PLAN BLOCK 4-10B

The coloured floor plan is not intended to demarcate the boundary of the flat.



LEGEND:

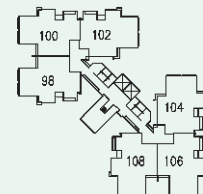
4 Room

W1 - Three Quarter Height Window (approx. 500mm high parapet wall)

BW - Bay Window (approx. 500mm high parapet wall)

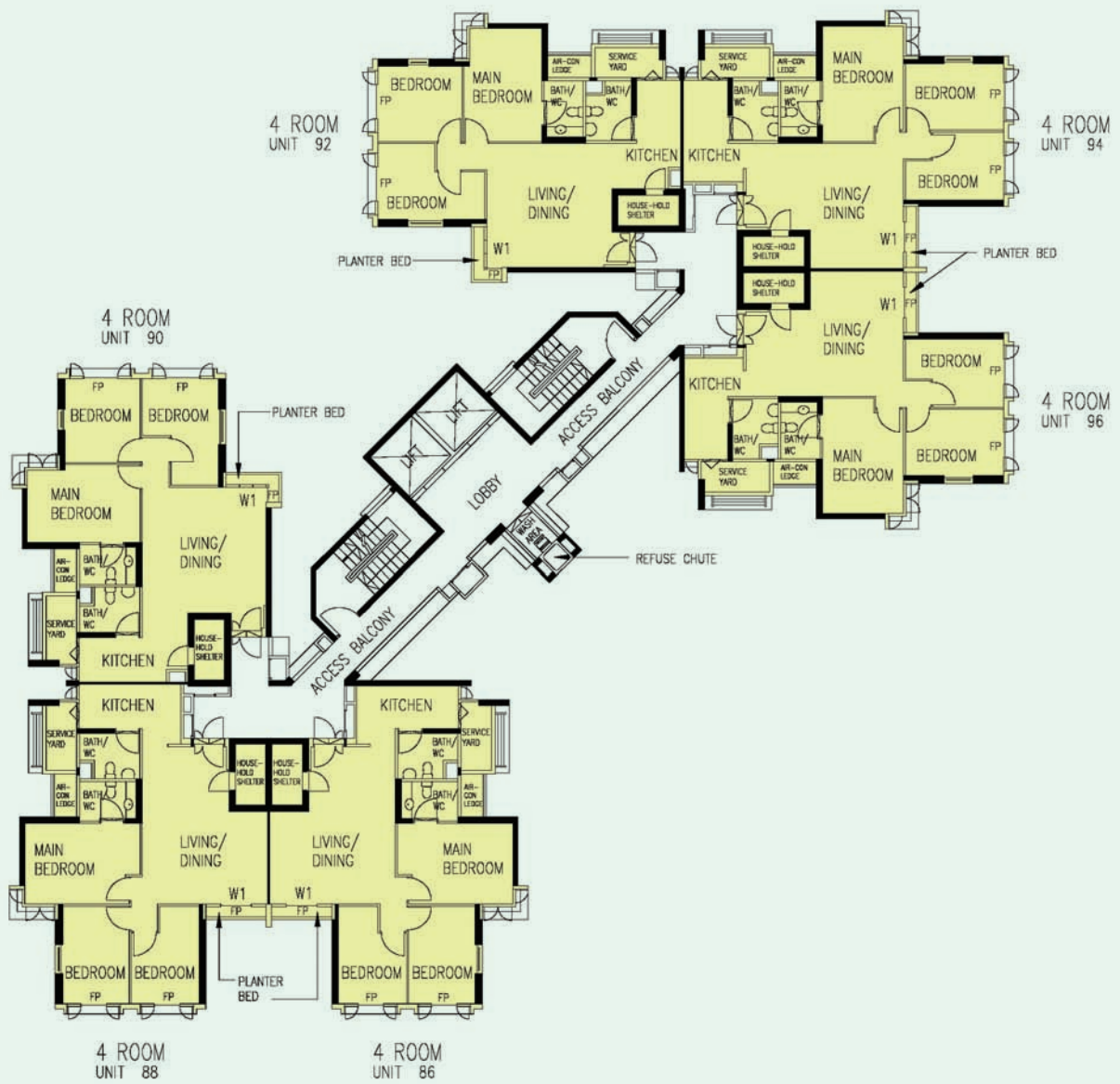
FP - Fixed Glass Panel (1000mm width x 1400mm height max)

Unless otherwise indicated all windows will be standard height windows.



18TH TO 25TH STOREY FLOOR PLAN BLOCK 410B

The coloured floor plan is not intended to demarcate the boundary of the flat.



LEGEND:

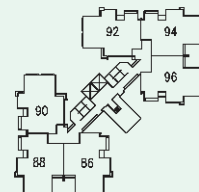
4 Room

W1 - Three Quarter Height Window (approx. 500mm high parapet wall)

BW - Bay Window (approx. 500mm high parapet wall)

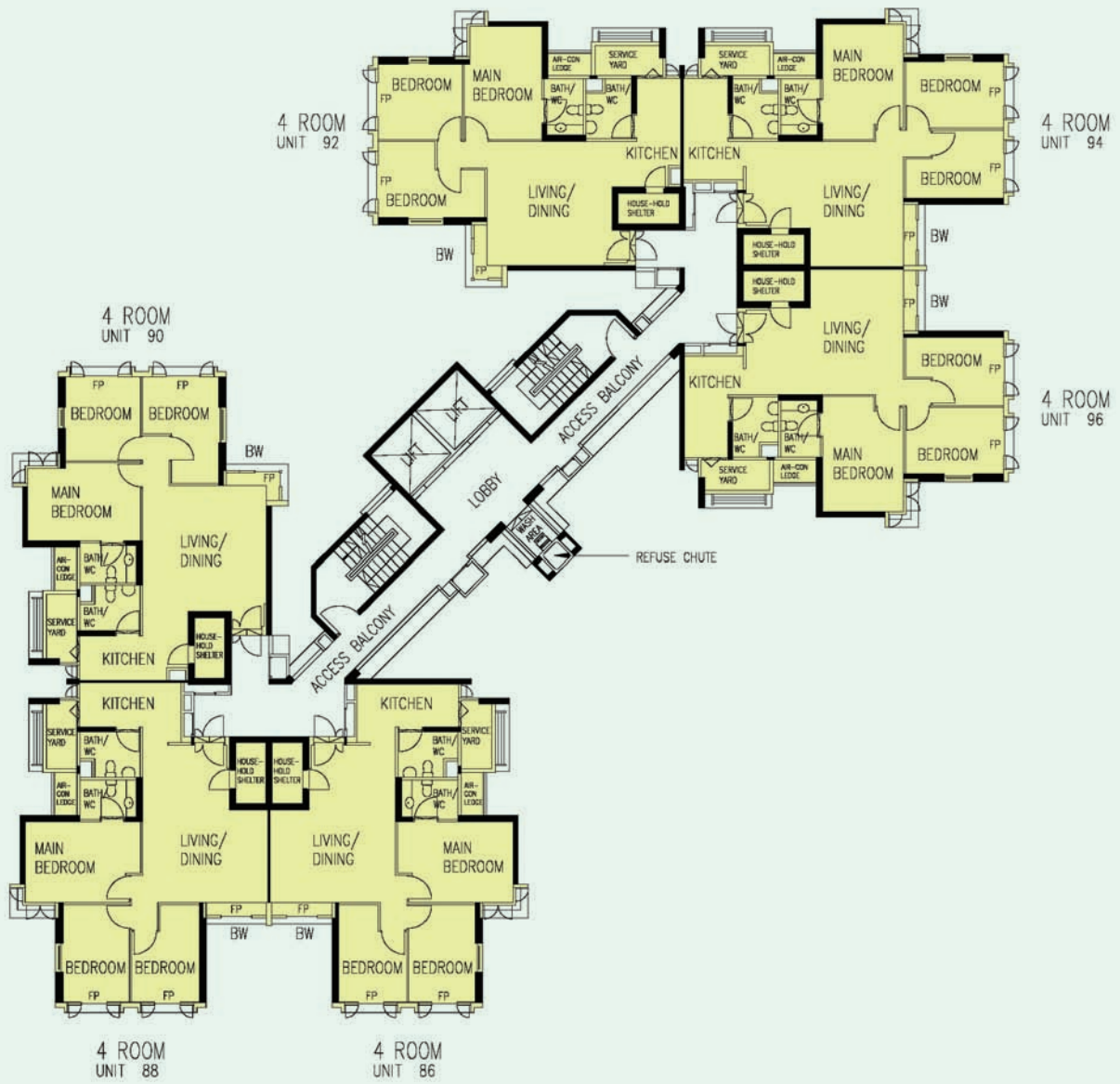
FP - Fixed Glass Panel (1000mm width x 1400mm height max)

Unless otherwise indicated all windows will be standard height windows.



6TH TO 9TH STOREY FLOOR PLAN BLOCK 410C

The coloured floor plan is not intended to demarcate the boundary of the flat.



LEGEND:

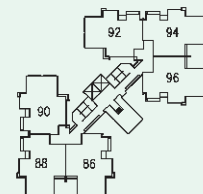
4 Room

W1 - Three Quarter Height Window (approx. 500mm high parapet wall)

BW - Bay Window (approx. 500mm high parapet wall)

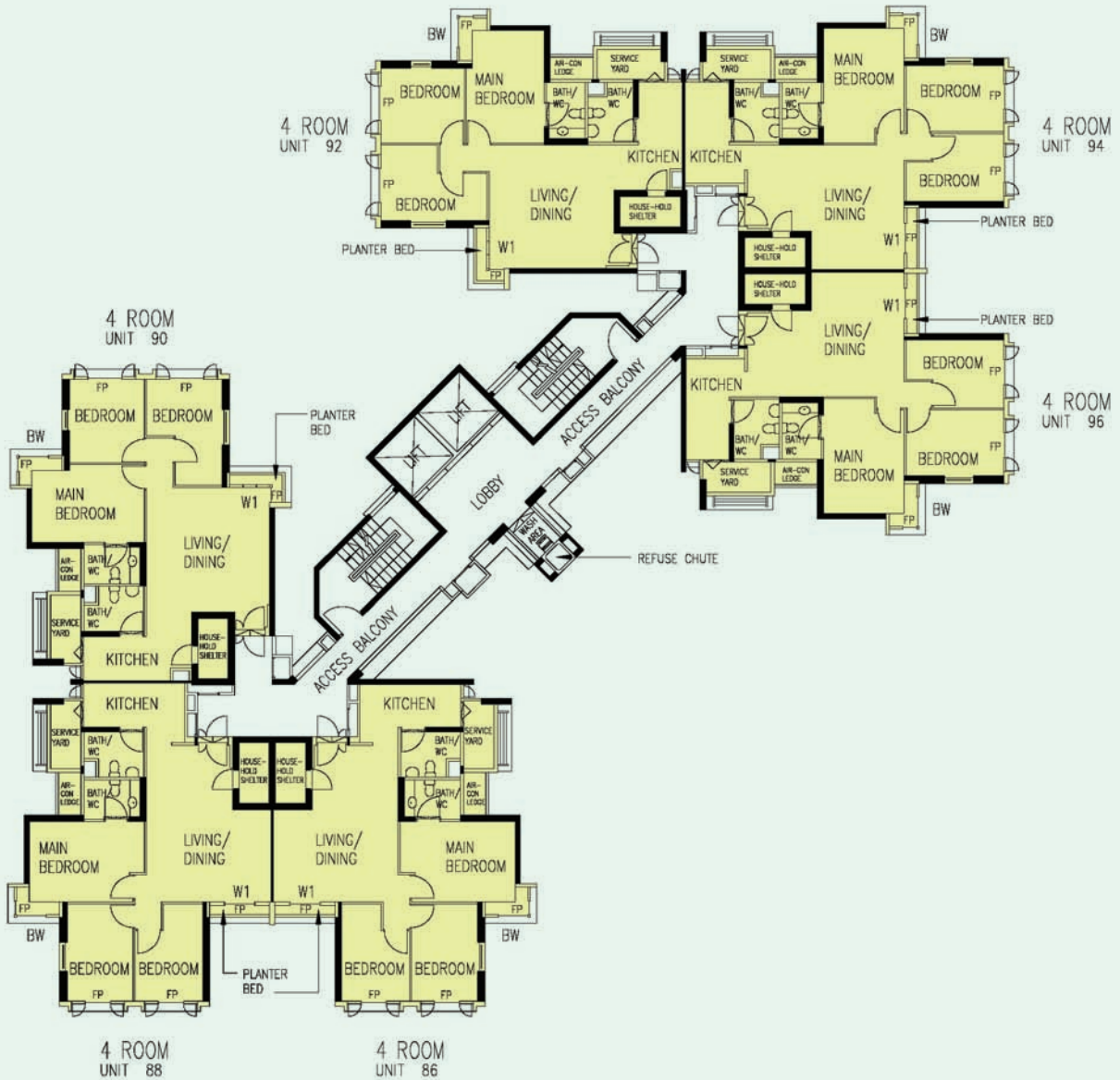
FP - Fixed Glass Panel (1000mm width x 1400mm height max)

Unless otherwise indicated all windows will be standard height windows.



10TH TO 17TH STOREY FLOOR PLAN BLOCK 410C

The coloured floor plan is not intended to demarcate the boundary of the flat.



LEGEND:

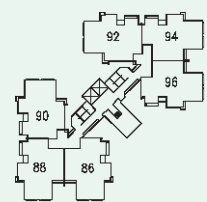
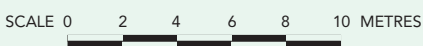
4 Room

W1 - Three Quarter Height Window (approx. 500mm high parapet wall)

BW - Bay Window (approx. 500mm high parapet wall)

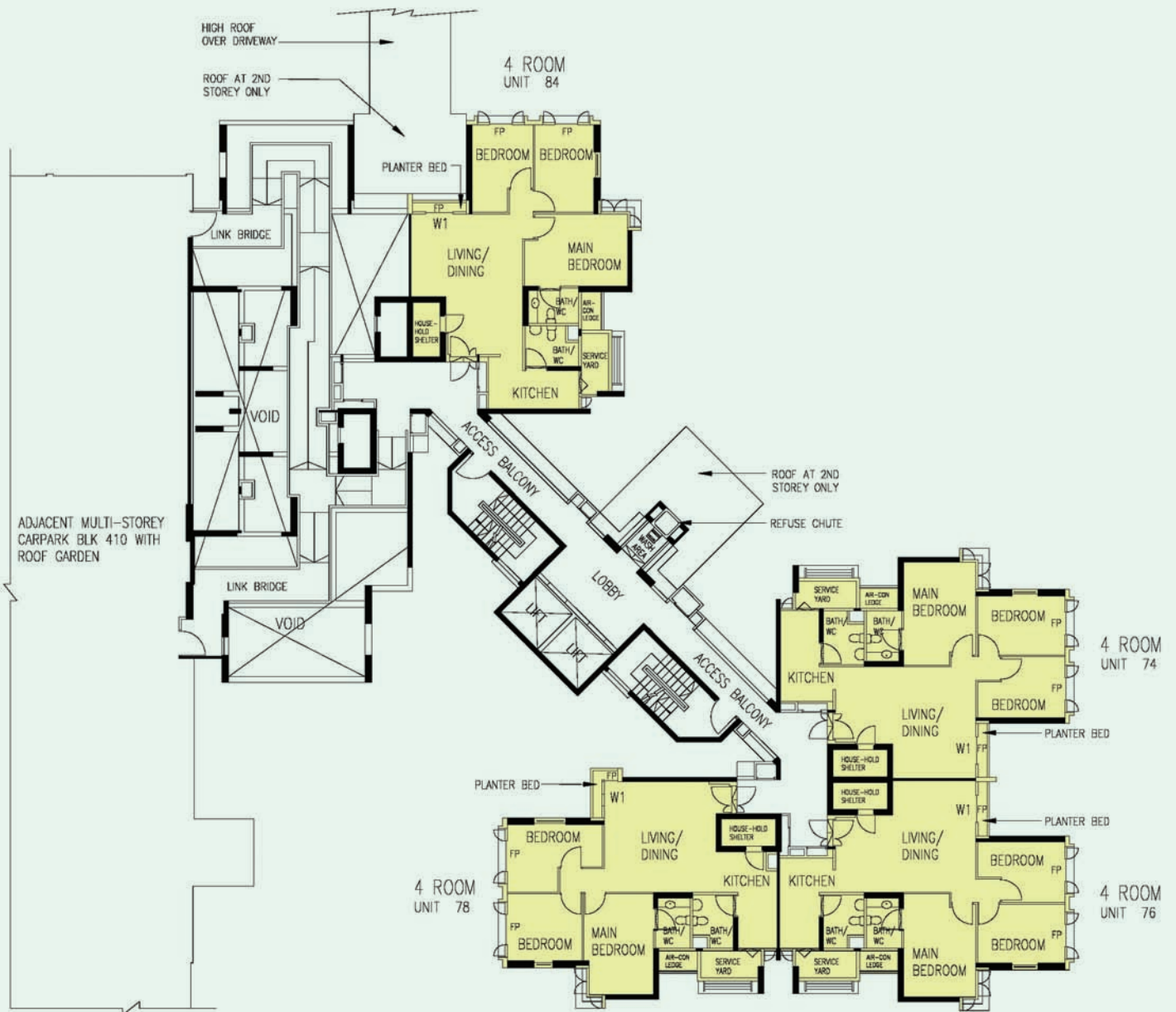
FP - Fixed Glass Panel (1000mm width x 1400mm height max)

Unless otherwise indicated all windows will be standard height windows.



18TH TO 25TH STOREY FLOOR PLAN BLOCK 410C

The coloured floor plan is not intended to demarcate the boundary of the flat.



LEGEND:

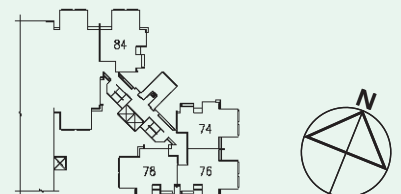
4 Room

W1 - Three Quarter Height Window (approx. 500mm high parapet wall)

BW - Bay Window (approx. 500mm high parapet wall)

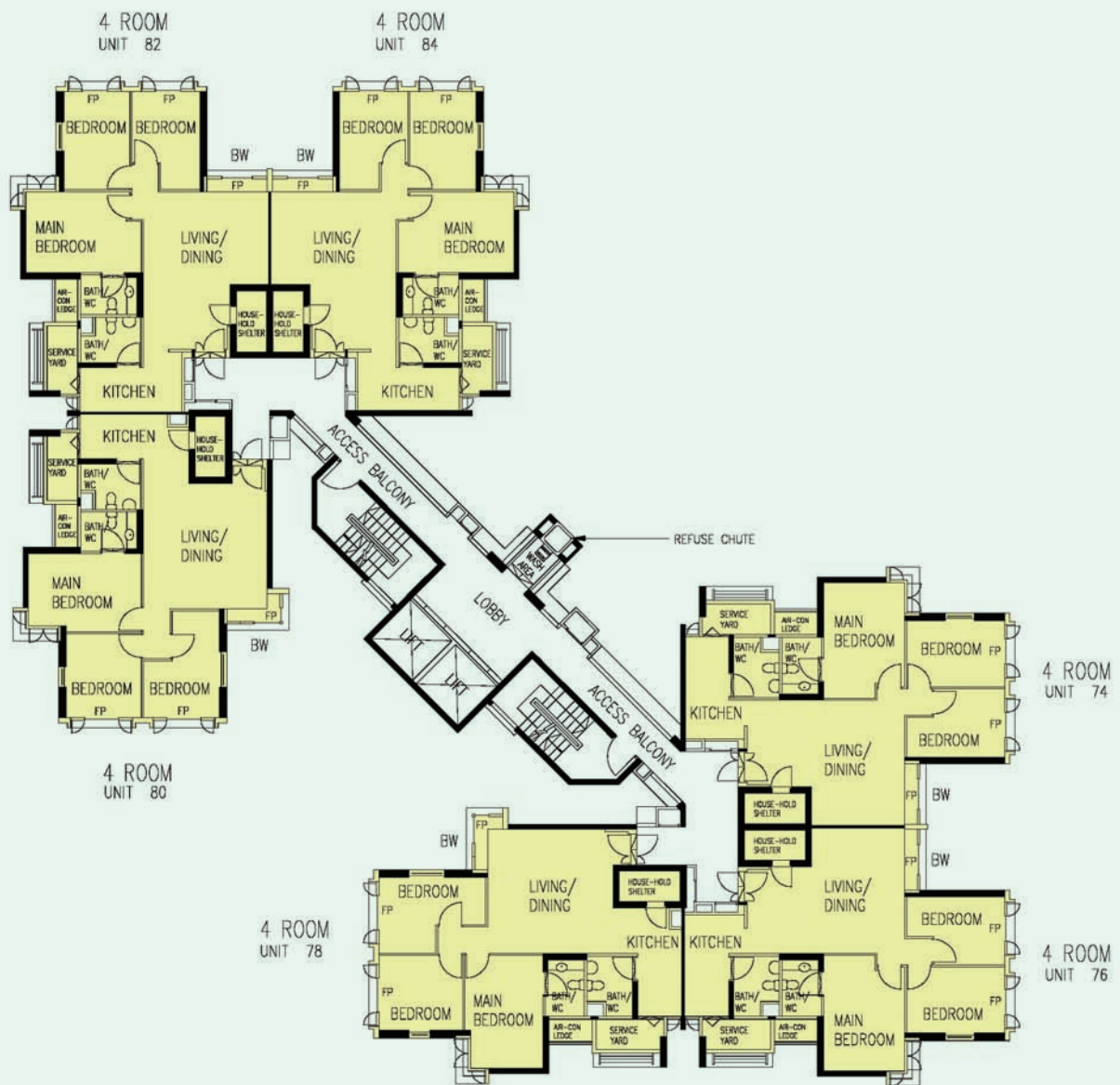
FP - Fixed Glass Panel (1000mm width x 1400mm height max)

Unless otherwise indicated all windows will be standard height windows.



**2ND TO 4TH STOREY FLOOR PLAN
BLOCK 411A**

The coloured floor plan is not intended to demarcate the boundary of the flat.



LEGEND:

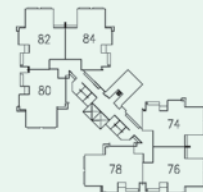
4 Room

W1 - Three Quarter Height Window (approx. 500mm high parapet wall)

BW - Bay Window (approx. 500mm high parapet wall)

FP - Fixed Glass Panel (1000mm width x 1400mm height max)

Unless otherwise indicated all windows will be standard height windows.



10TH TO 17TH STOREY FLOOR PLAN BLOCK 411A

The coloured floor plan is not intended to demarcate the boundary of the flat.



LEGEND:

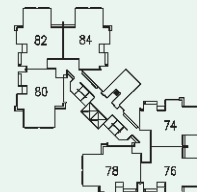
4 Room

W1 - Three Quarter Height Window (approx. 500mm high parapet wall)

BW - Bay Window (approx. 500mm high parapet wall)

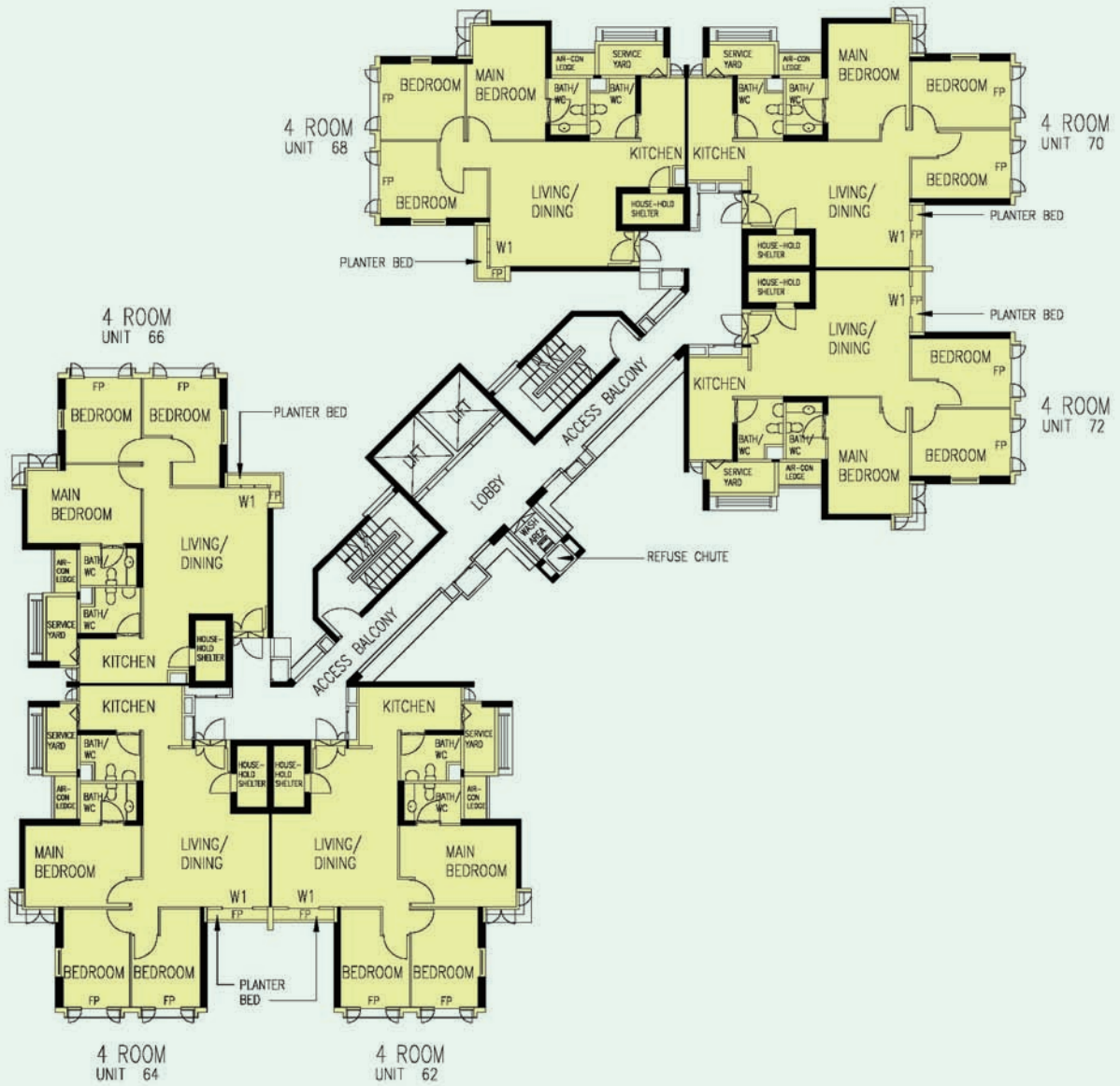
FP - Fixed Glass Panel (1000mm width x 1400mm height max)

Unless otherwise indicated all windows will be standard height windows.



18TH TO 25TH STOREY FLOOR PLAN BLOCK 411A

The coloured floor plan is not intended to demarcate the boundary of the flat.



LEGEND:

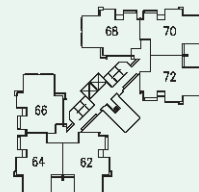
4 Room

W1 - Three Quarter Height Window (approx. 500mm high parapet wall)

BW - Bay Window (approx. 500mm high parapet wall)

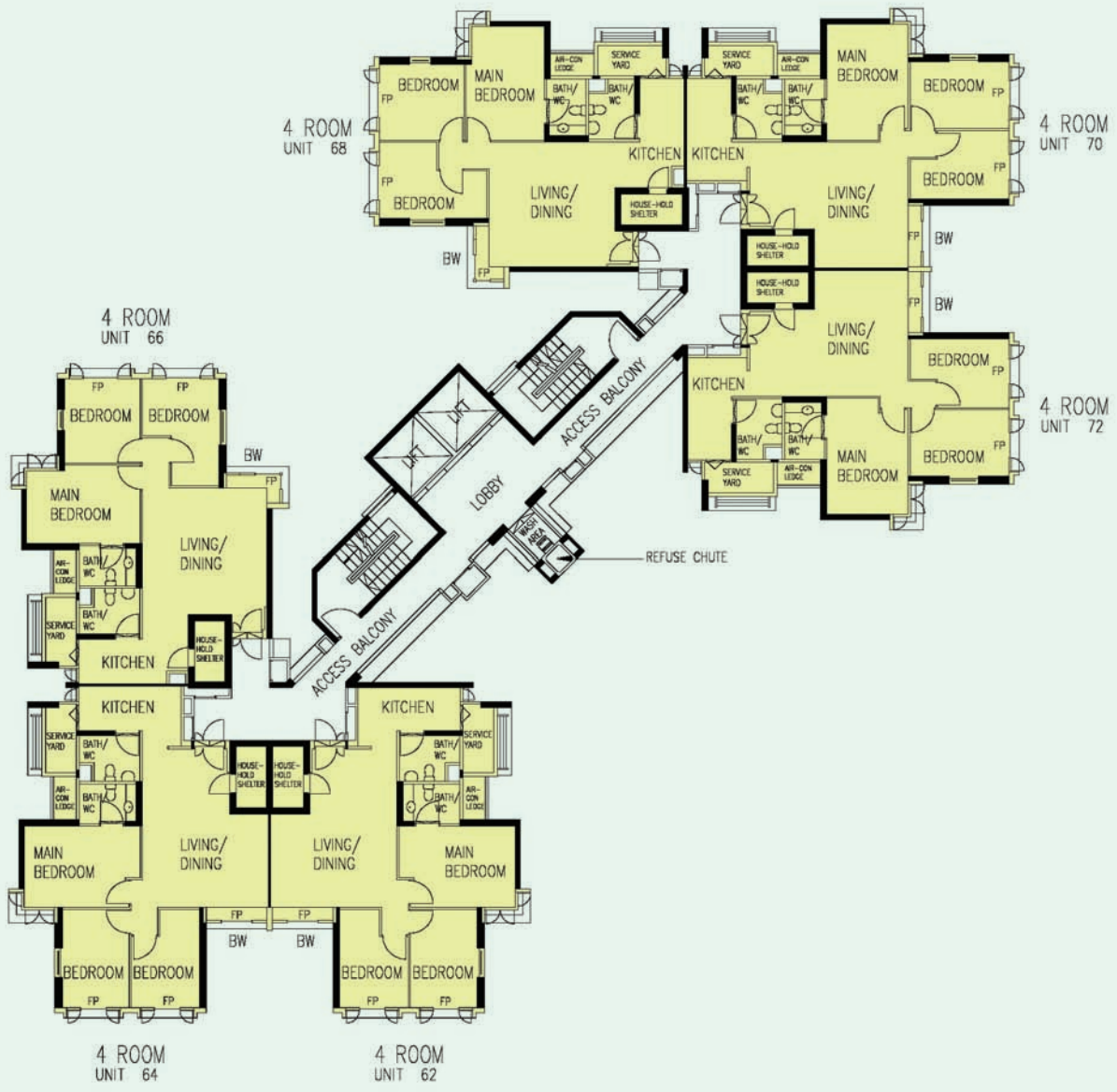
FP - Fixed Glass Panel (1000mm width x 1400mm height max)

Unless otherwise indicated all windows will be standard height windows.



6TH TO 9TH STOREY FLOOR PLAN BLOCK 411B

The coloured floor plan is not intended to demarcate the boundary of the flat.

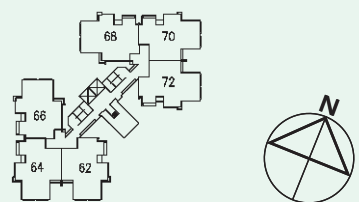
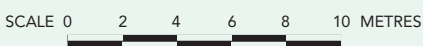


LEGEND:

4 Room

- W1 - Three Quarter Height Window (approx. 500mm high parapet wall)
- BW - Bay Window (approx. 500mm high parapet wall)
- FP - Fixed Glass Panel (1000mm width x 1400mm height max)

Unless otherwise indicated all windows will be standard height windows.



10TH TO 17TH STOREY FLOOR PLAN
BLOCK 411B

The coloured floor plan is not intended to demarcate the boundary of the flat.



General Specifications for Coral Spring

Foundation

Piled foundations

Structure

Reinforced concrete structural framework with reinforced concrete slabs

Roof

Reinforced concrete roof slab with precast concrete secondary roofing

Walls

All external and internal walls are constructed with reinforced concrete/solid blocks/bricks with cement plastering/facing bricks/precast panels/precast lightweight concrete partitions

Windows

Aluminium framed windows with tinted glass.

Doors

Entrance	: decorative solid timber door and metal gate
Bedroom	: decorative solid timber door (Type D10)
Bathroom/WC	: laminated semi-solid timber door (Type D10a)
Household Shelter	: metal door
Service Yard	: aluminium framed door with glass

Finishes

Ceiling	: skim coated or plastered and painted
Kitchen/Bathroom/WC wall	: glazed ceramic tiles
Other walls	: skim coated or plastered and painted
Living/Dining floor	: glazed porcelain ceramic tiles with timber skirting
Bedrooms floor	: timber strip flooring with timber skirting
Kitchen floor	: glazed porcelain ceramic tiles
Bathroom/WC floor	: glazed ceramic tiles
Service Yard floor	: glazed porcelain ceramic tiles with ceramic tile skirting
Household Shelter floor	: glazed porcelain ceramic tiles

Fittings

Quality locksets
 Quality sanitary fittings
 Vanity top wash basin for master bathroom/WC, wash basin for common bathroom/WC
 Hot water pipes and tap/shower/bath mixers
 Clothes drying rack

Services

Gas services and concealed water services
 Concealed electrical wiring to lighting and power points (including water heater and air-conditioning points)
 Television points
 Telephone points

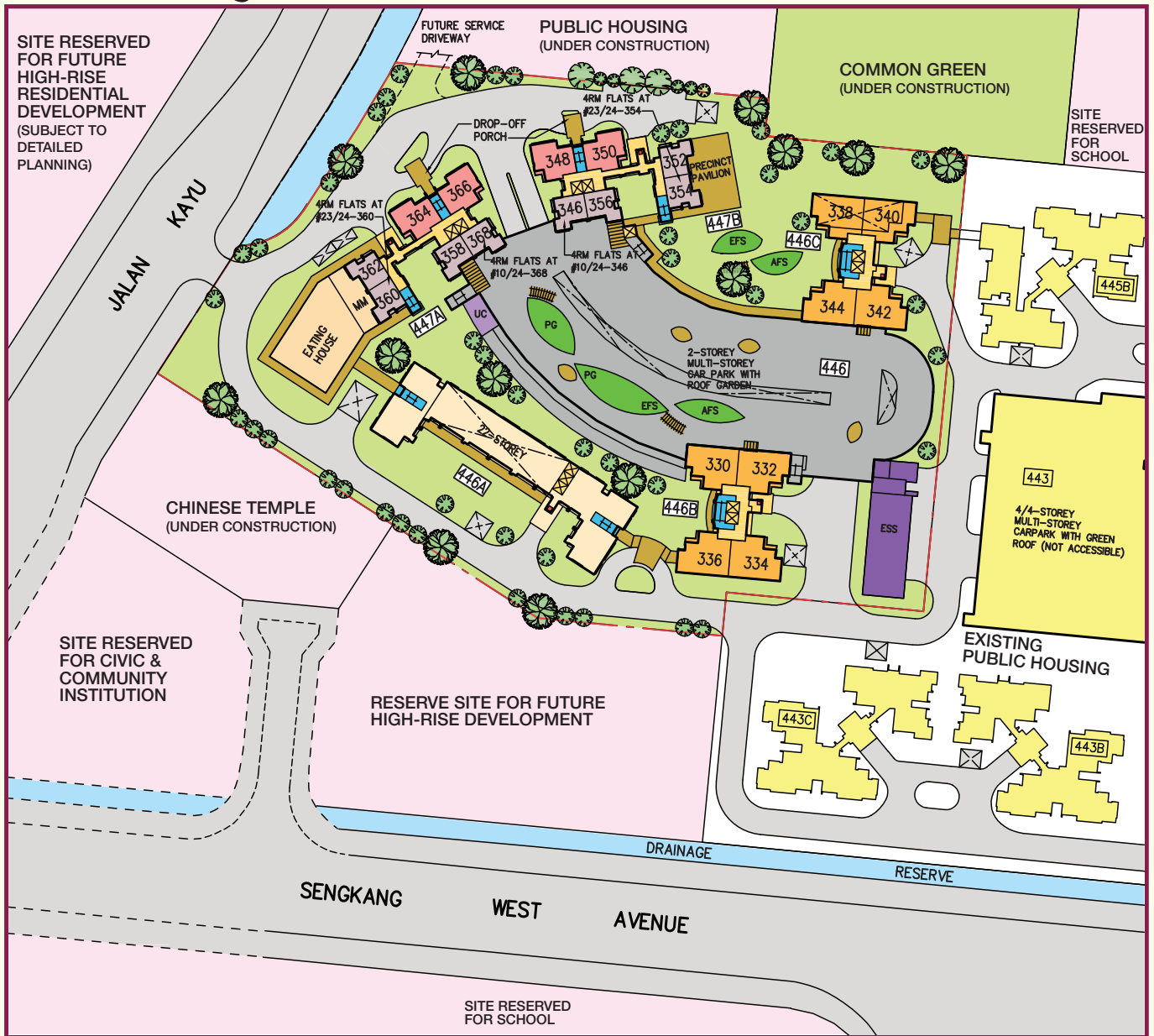
Important Notes:

- 1) The Household Shelter is designed for use as civil defence shelter. The walls, ceiling, floor and door of the Household Shelter shall not be hacked, drilled, altered or removed.
- 2) Air-con panel in the main bedroom will be not provided.
- 3) Any unused or unoccupied open spaces in front of or nearby / adjacent to the flat units are not available for purchase and that the HDB will not entertain any requests from the flat owners to purchase and / or enclose the unused or unoccupied open spaces.

You are advised to visit HDB's website at www.hdb.gov.sg for information on renovations rules.

The plans in this brochure are the copyright of the Housing & Development Board (HDB), Singapore. The HDB reserves the right at any time, without notice and at its sole discretion, to change any aspect of this project including but not limited to the omission, amalgamation of or increasing or reducing the number of communal facilities and amenities. Similarly, all dimensions, areas, plans, colour schemes, descriptions and specifications noted herein are subject to change or alteration without notice if required by the competent Authority or at HDB's sole and absolute discretion. The HDB will not entertain any request for alteration of the layout or specifications of a flat, to meet individual needs. The void deck in any apartment block may subsequently be used for facilities, such as child care centres, education centres, residents' committee centres and such other facilities as HDB shall deem fit.

Fernvale Lodge

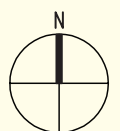


Sengkang N4 C9 Standard Flats

LEGEND:

- | | | | | |
|--|---|------------------------|--|---|
| | 2 - Room | } Home Ownership Flats | | Driveway / Fire Engine Access |
| | 3 - Room | | | Future Community Facilities at 1st Storey (FCF) |
| | 4 - Room | | | Centralised Refuse Chute |
| | Rental Flats | | | Lift |
| | Surrounding Buildings | | | Service Bay |
| | Trellis / Pergola | | | |
| | Linkway / Precinct Pavilion / Drop - Off Porch / Shelter / Link-Bridge | | | |
| | Eating House at 1st Storey / Minimart (MM) | | | |
| | Reserved for / Existing Development | | | |
| | Children Playground (PG) / Adult Fitness Station (AFS)
Elderly Fitness Station (EFS) | | | |
| | Electrical Sub-Station (ESS) | | | |
| | Utilities Centre at 1st Storey (UC) | | | |
| | Carparking | | | |
| | Open Space | | | |
| | Staircase | | | |
| | Drainage Reserve | | | |

SCALE 0 10 20 30 40 50 METRES

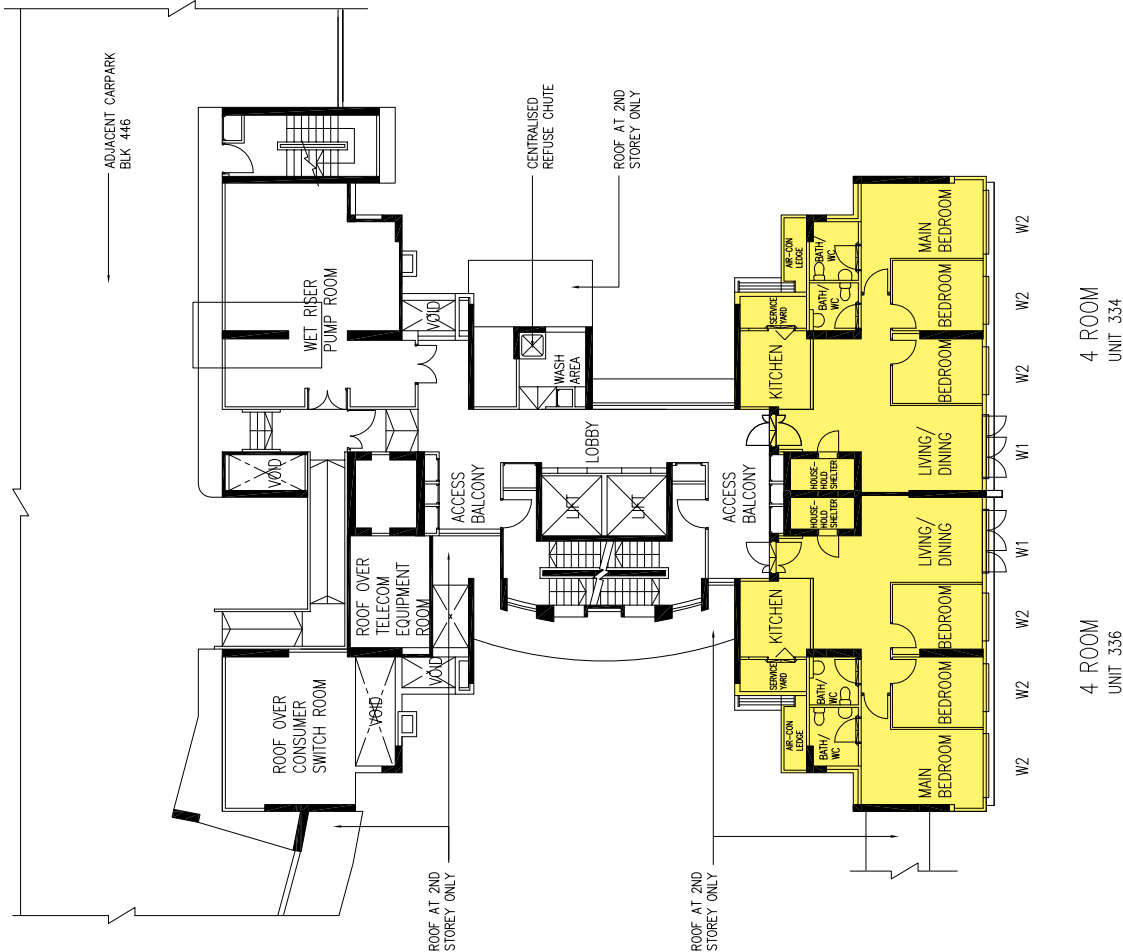
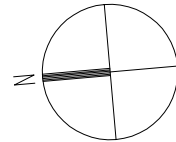


Notes:
Reserve site for Civic & Community Institution include examples like Community Centre/Club, Association, Home for the Aged, etc, subject to change and planning approval.

Artist's Impression



The information contained herein is subject to change at any time without notice and cannot form part of an offer or contract. The proposed facilities and their locations as shown are only estimates. The proposed facilities may include other ancillary uses allowed under URA's prevailing Development Control guidelines. For example, places of worship may also include columbarium as an ancillary use, while community centres may also include childcare centres. The implementation of the facilities is subject to review by the Government or competent authorities. While reasonable care has been taken in providing this information, HDB shall not be responsible in any way for any damage or loss suffered by any person whether directly or indirectly as a result of reliance on the said information or as a result of any error or omission therein.



**BLK 446B
(2ND STOREY FLOOR PLAN)**

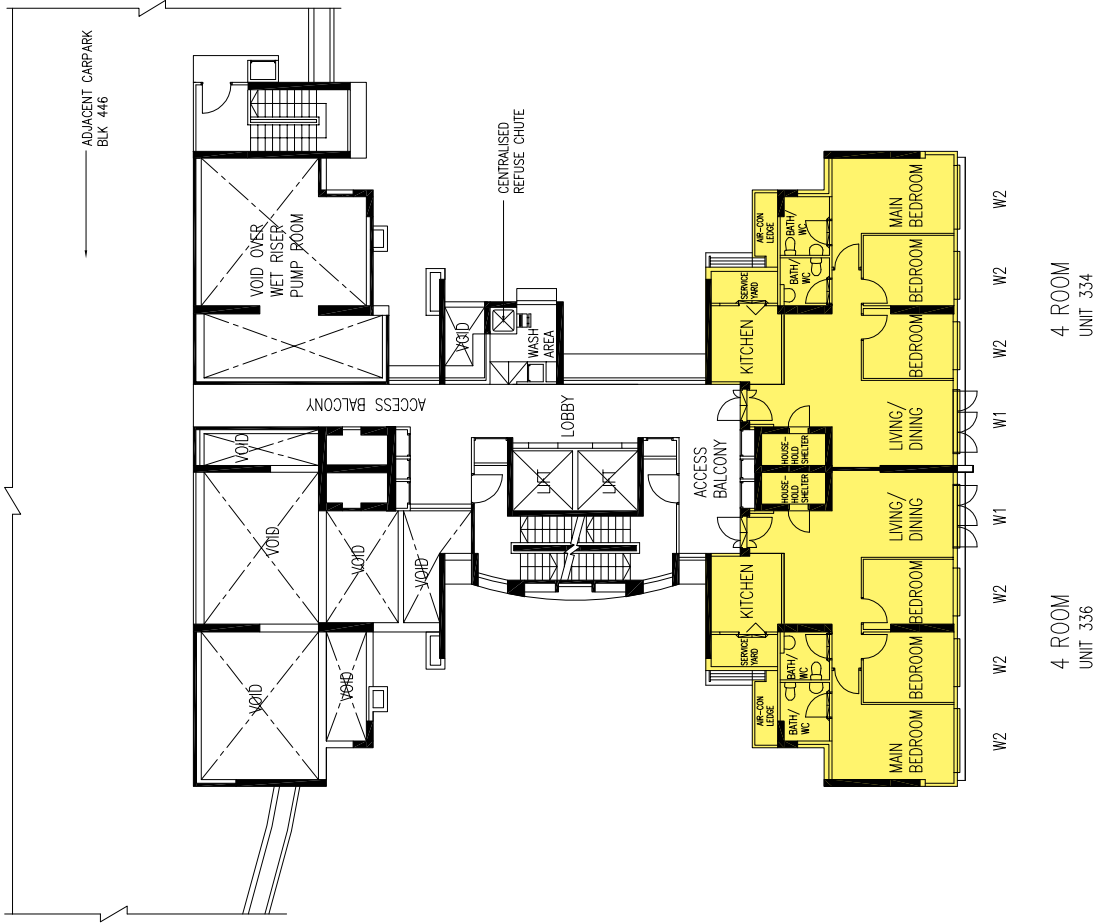
LEGEND:

- 2 Room
- 3 Room
- 4 Room

W1 - Full Height Window

W2 - Three Quarter Height Window (Approx. 750mm high parapet wall)
Unless otherwise indicated all windows will be standard height windows.

The coloured floor plan is not intended to demarcate the boundary of the flat.



BLK 446B
(3RD STOREY FLOOR PLAN)

LEGEND:

- 2 Room
- 3 Room
- 4 Room

W1 - Full Height Window

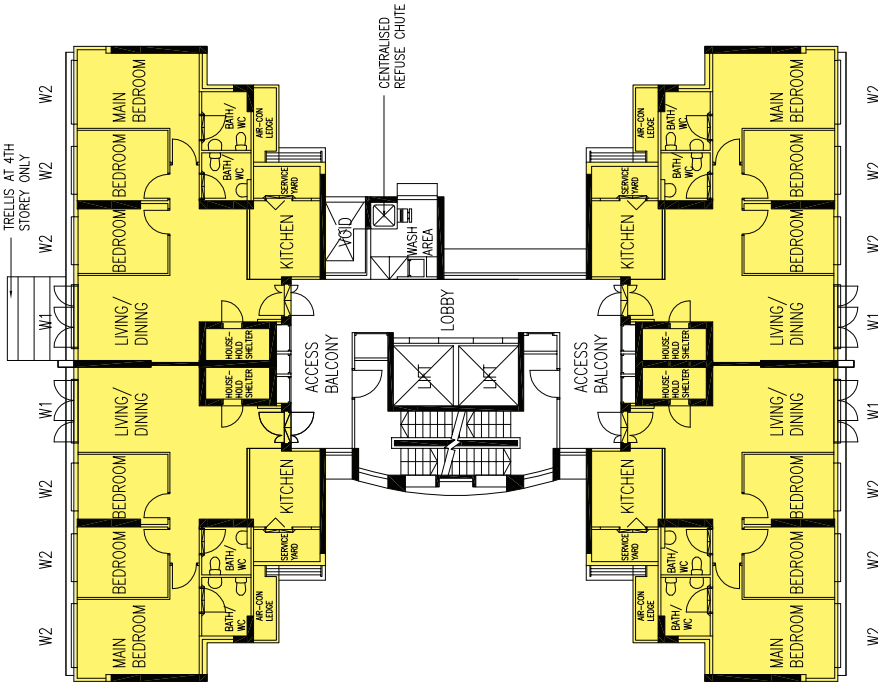
W2 - Three Quarter Height Window (Approx. 750mm high parapet wall)
Unless otherwise indicated all windows will be standard height windows.

The coloured floor plan is not intended to demarcate the boundary of the flat.

SCALE 0 2 4 6 8 10 METRES

4 ROOM
UNIT 330

4 ROOM
UNIT 332



4 ROOM
UNIT 336

4 ROOM
UNIT 334

BLK 446B
(4TH TO 21ST STOREY FLOOR PLAN)

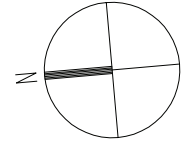
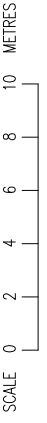
LEGEND:

- 2 Room
- 3 Room
- 4 Room

W1 - Full Height Window

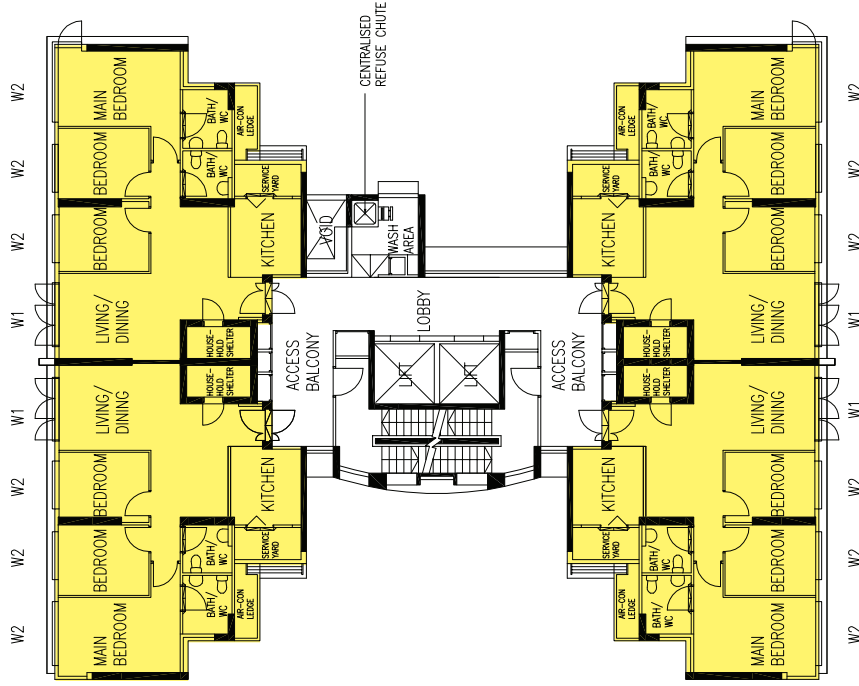
W2 - Three Quarter Height Window (Approx. 750mm high parapet wall)
Unless otherwise indicated all windows will be standard height windows.

The coloured floor plan is not intended to demarcate the boundary of the flat.



4 ROOM
UNIT 330

4 ROOM
UNIT 332



4 ROOM
UNIT 336

4 ROOM
UNIT 334

BLK 446B (22ND TO 26TH STOREY FLOOR PLAN)

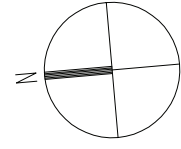
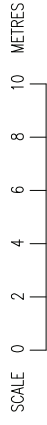
LEGEND:

- 2 Room
- 3 Room
- 4 Room

W1 - Full Height Window

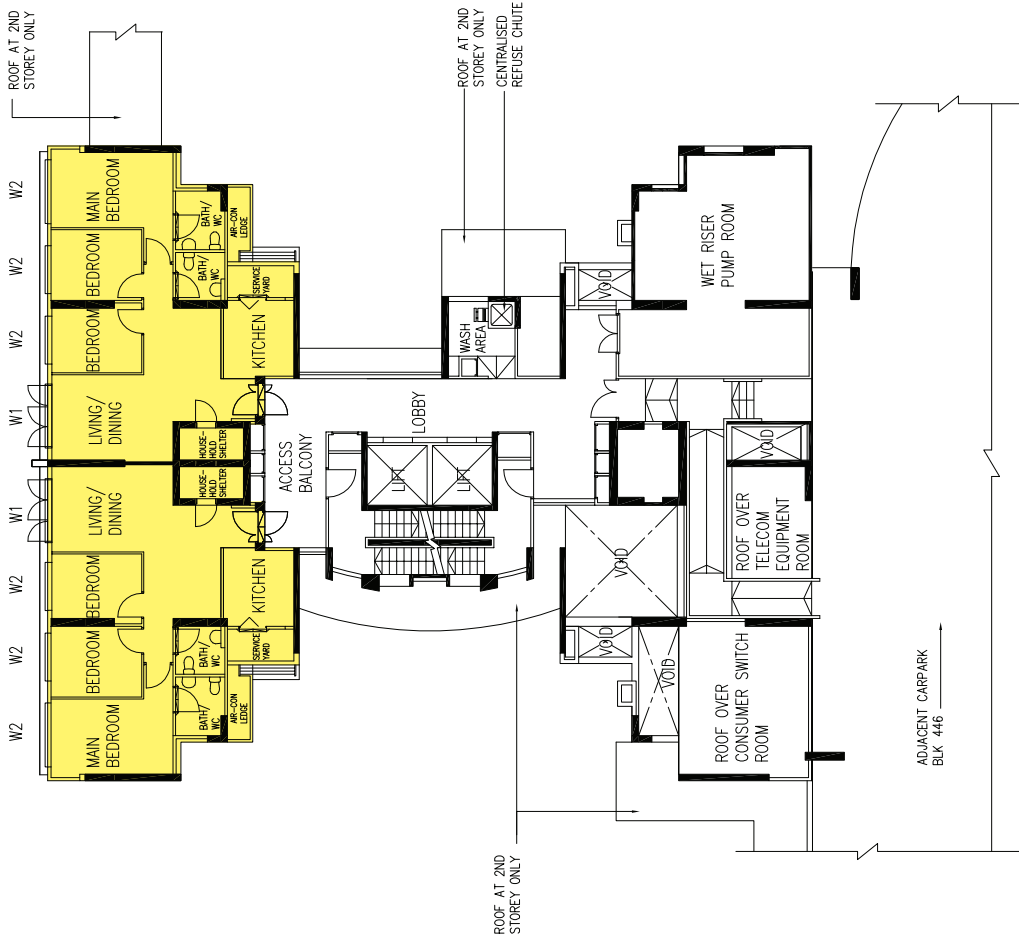
W2 - Three Quarter Height Window (Approx. 750mm high parapet wall)
Unless otherwise indicated all windows will be standard height windows.

The coloured floor plan is not intended to demarcate the boundary of the flat.



4 ROOM
UNIT 338

4 ROOM
UNIT 340



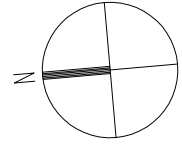
LEGEND:

- 2 Room
- 3 Room
- 4 Room

W1 - Full Height Window

W2 - Three Quarter Height Window (Approx. 750mm high parapet wall)
Unless otherwise indicated all windows will be standard height windows.

The coloured floor plan is not intended to demarcate the boundary of the flat.

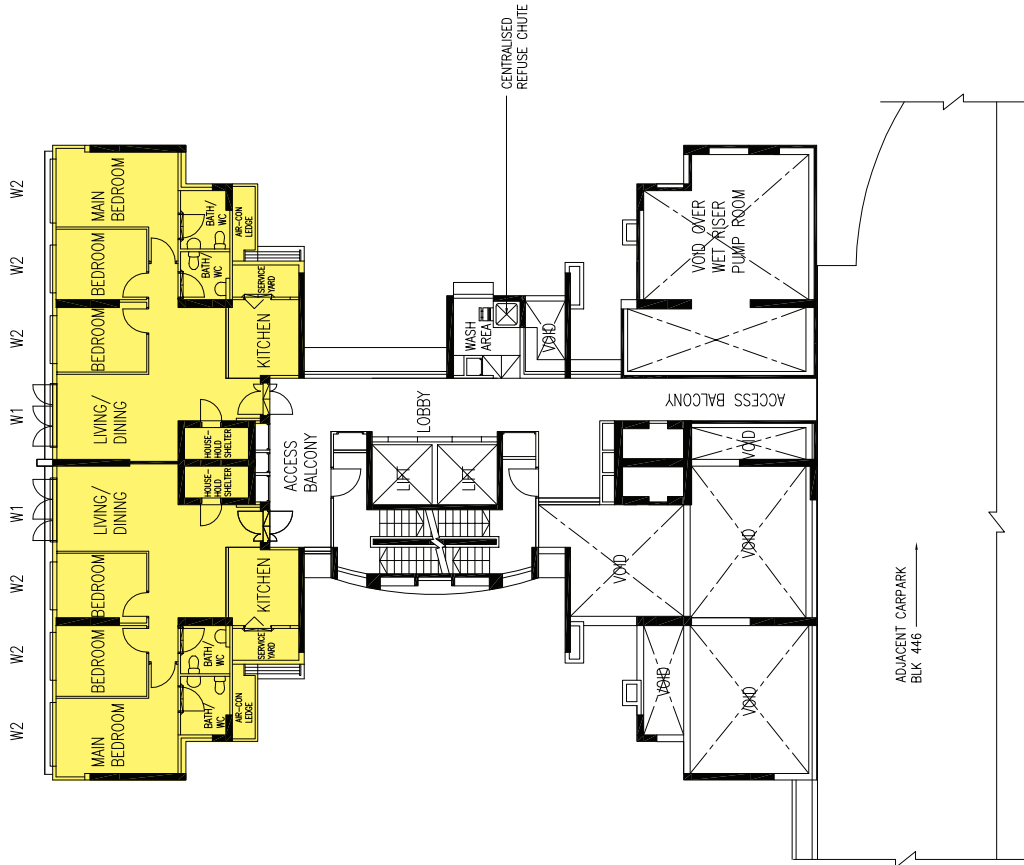


SCALE 0 2 4 6 8 10 METRES

BLK 446C
(2ND STOREY FLOOR PLAN)

4 ROOM
UNIT 338

4 ROOM
UNIT 340



LEGEND:

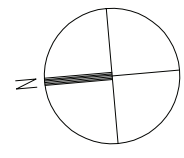
- 2 Room
- 3 Room
- 4 Room

W1 - Full Height Window

W2 - Three Quarter Height Window (Approx. 750mm high parapet wall)

Unless otherwise indicated all windows will be standard height windows.

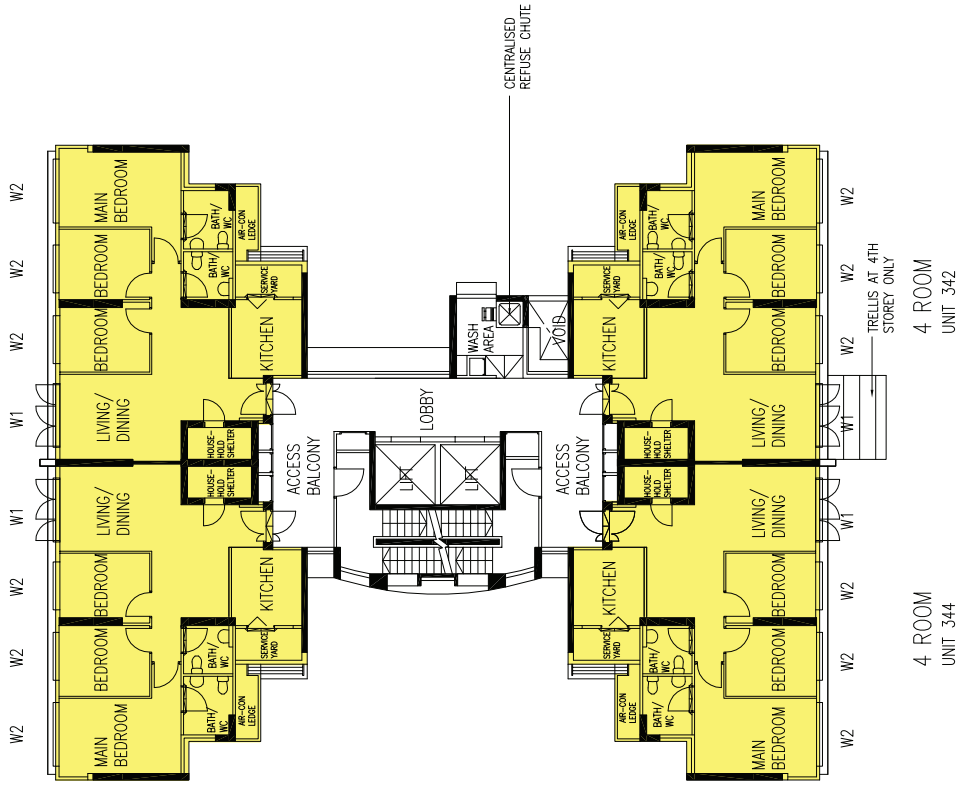
The coloured floor plan is not intended to demarcate the boundary of the flat.



BLK 446C
(3RD STOREY FLOOR PLAN)

4 ROOM
UNIT 338

4 ROOM
UNIT 340



4 ROOM
UNIT 344

4 ROOM
UNIT 342

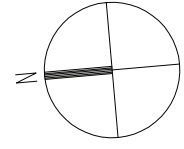
LEGEND:

- 2 Room
- 3 Room
- 4 Room

W1 - Full Height Window

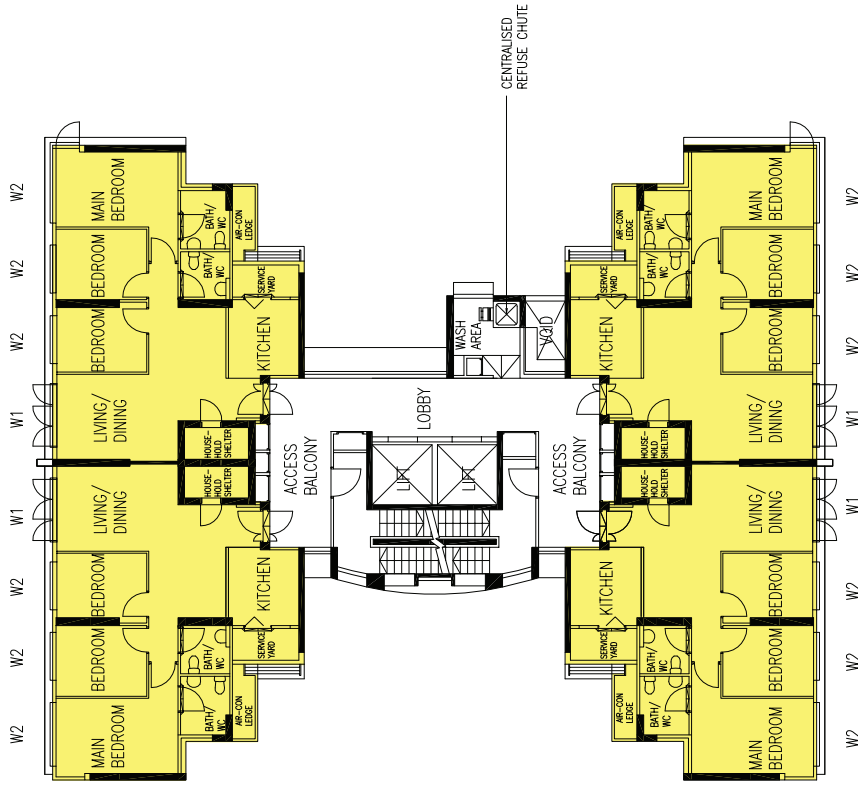
W2 - Three Quarter Height Window (Approx. 750mm high parapet wall)
Unless otherwise indicated all windows will be standard height windows.

The coloured floor plan is not intended to demarcate the boundary of the flat.



4 ROOM
UNIT 338

4 ROOM
UNIT 340



4 ROOM
UNIT 344

4 ROOM
UNIT 342

BLK 446C
(22ND TO 26TH STOREY FLOOR PLAN)

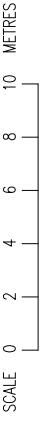
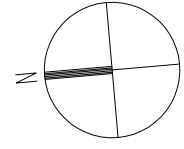
LEGEND:

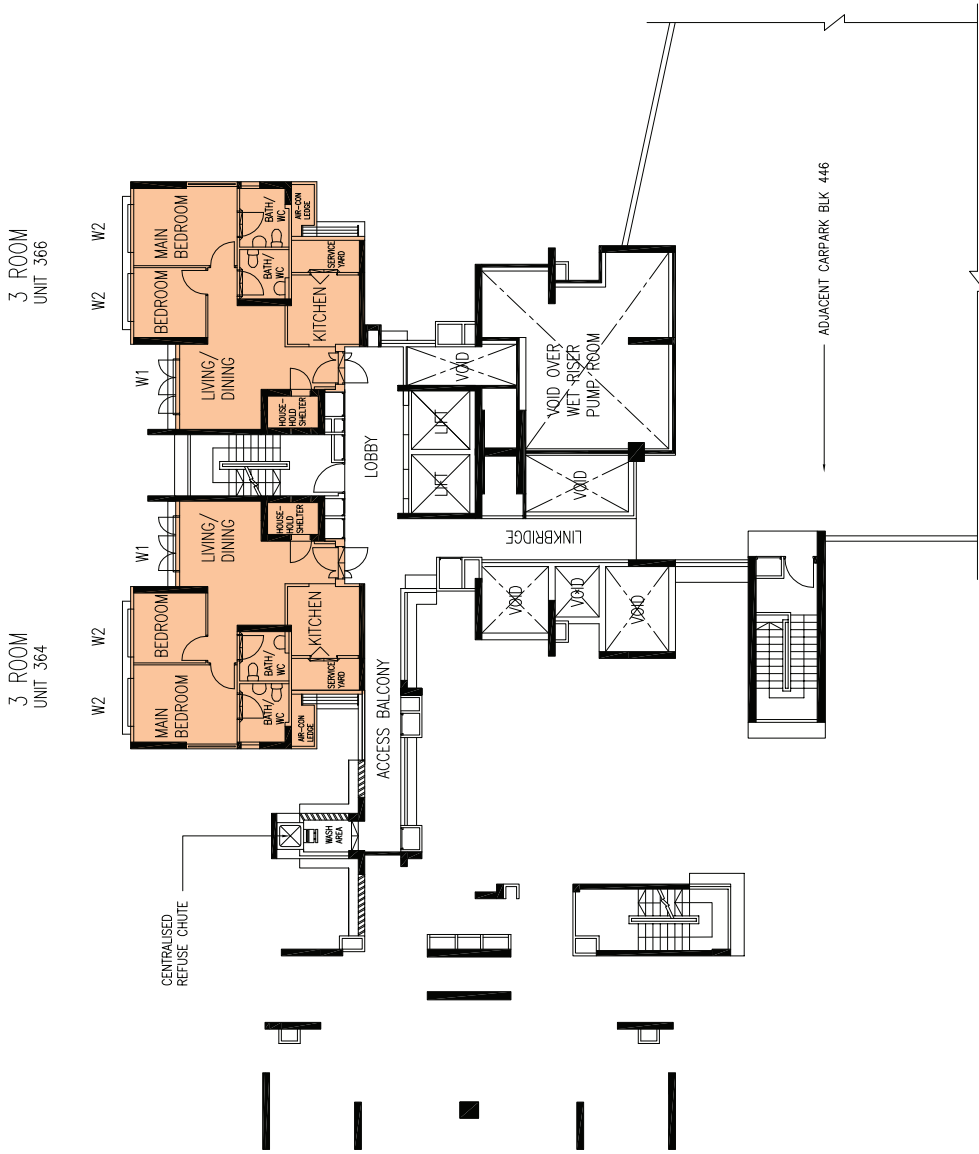
- 2 Room
- 3 Room
- 4 Room

W1 - Full Height Window

W2 - Three Quarter Height Window (Approx. 750mm high parapet wall)
Unless otherwise indicated all windows will be standard height windows.

The coloured floor plan is not intended to demarcate the boundary of the flat.





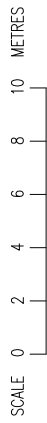
BLK 447A
(3RD STOREY FLOOR PLAN)

LEGEND:

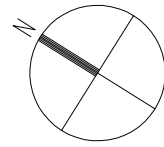
- 2 Room
- 3 Room
- 4 Room

W1 - Full Height Window

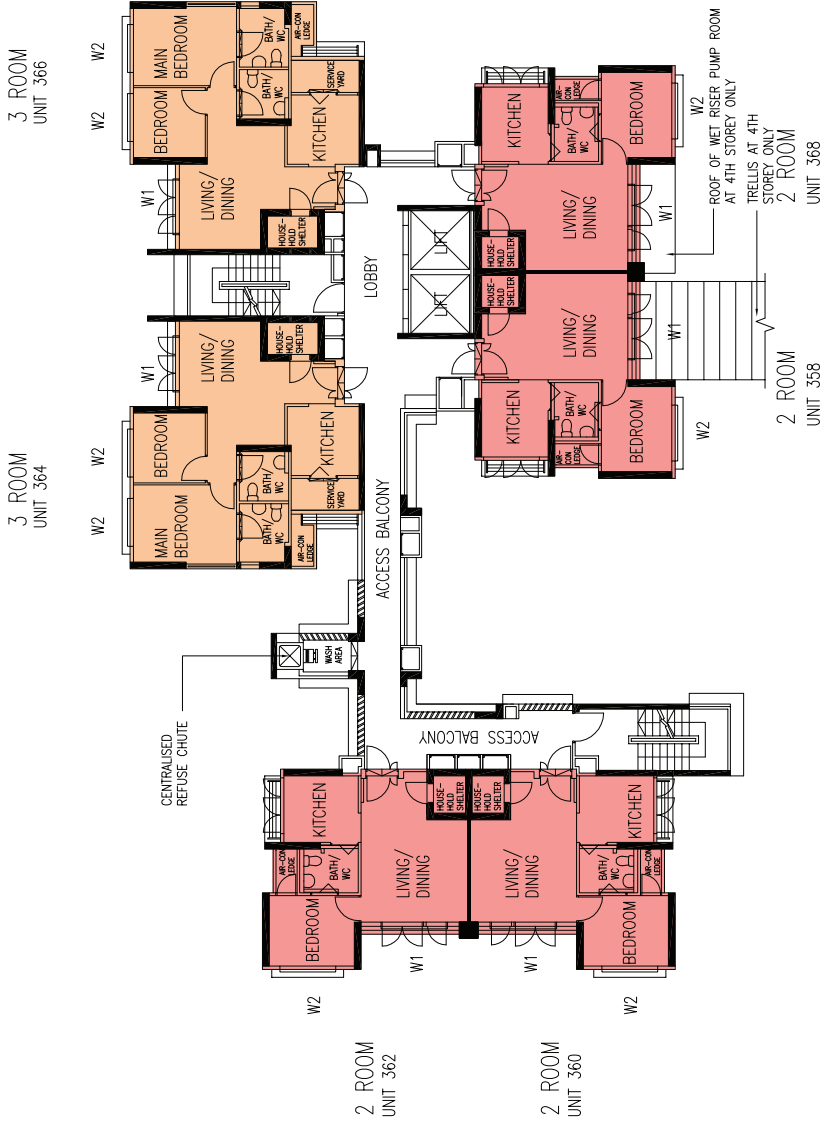
W2 - Three Quarter Height Window (Approx. 750mm high parapet wall)
Unless otherwise indicated all windows will be standard height windows.



SCALE 0 2 4 6 8 10 METRES



The coloured floor plan is not intended to demarcate the boundary of the flat.



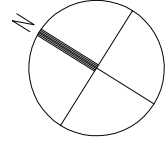
LEGEND:

- 2 Room
- 3 Room
- 4 Room

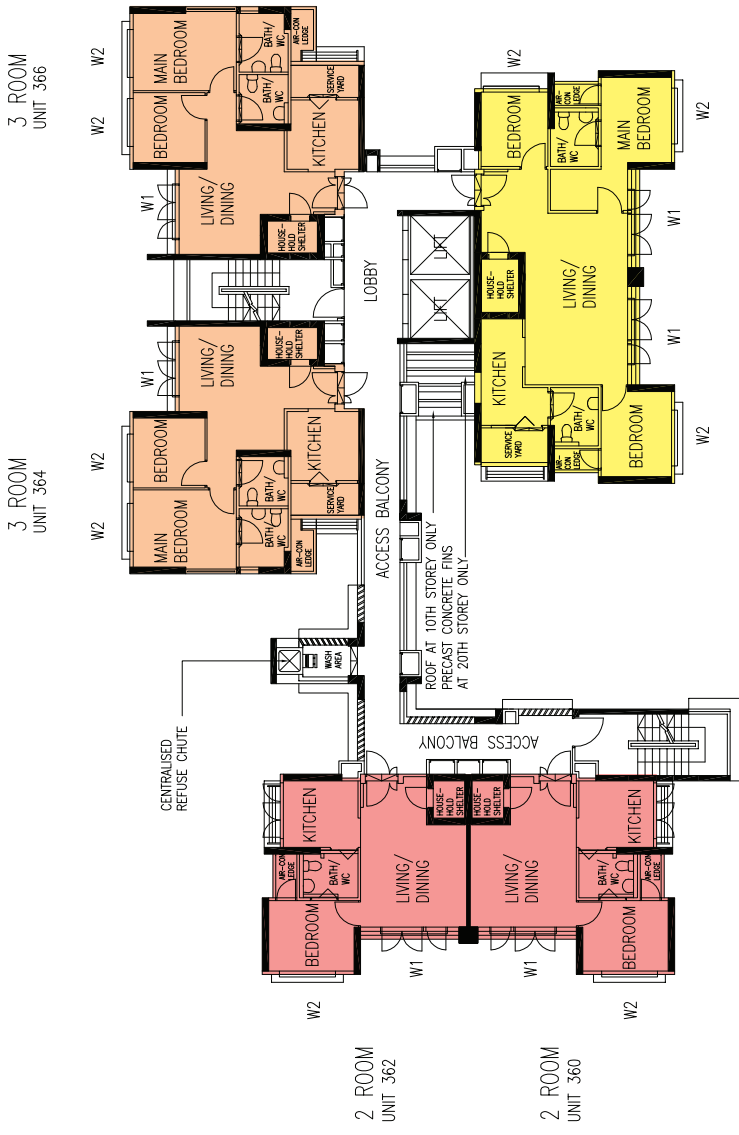
W1 - Full Height Window

W2 - Three Quarter Height Window (Approx. 750mm high parapet wall)
 Unless otherwise indicated all windows will be standard height windows.

The coloured floor plan is not intended to demarcate the boundary of the flat.



BLK 447A
 (4TH TO 9TH STOREY FLOOR PLAN)

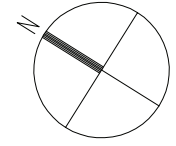
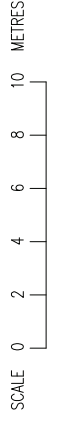


LEGEND:

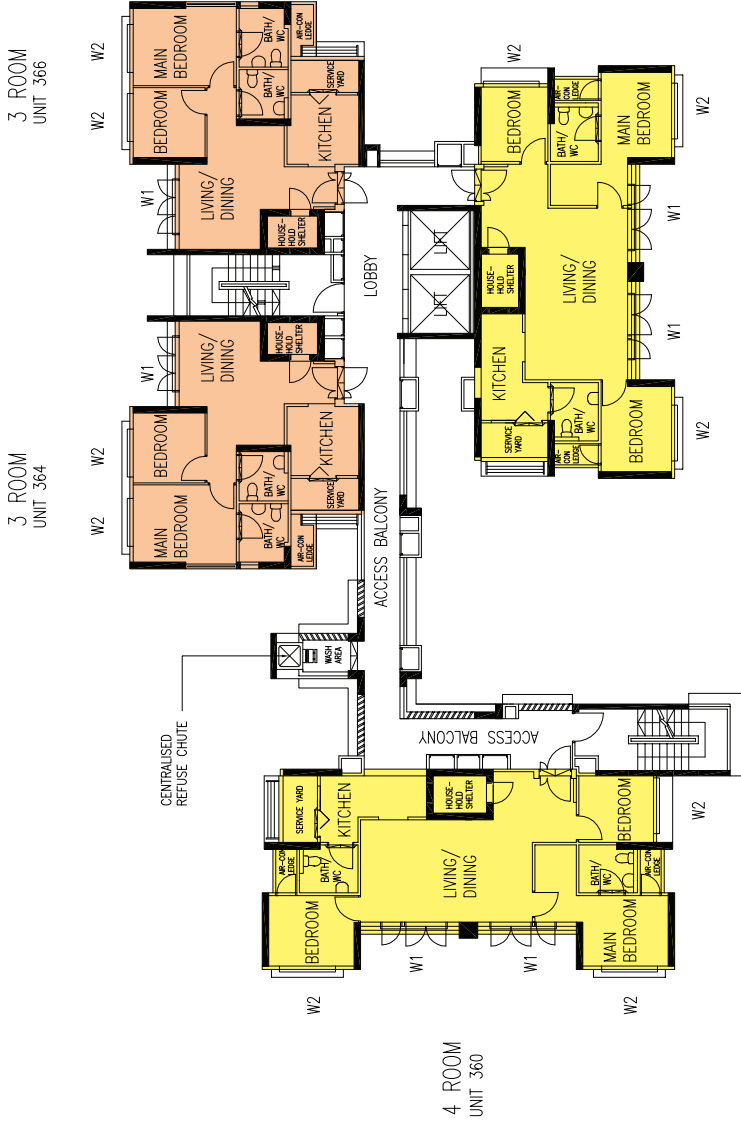
- 2 Room
- 3 Room
- 4 Room

W1 - Full Height Window
 W2 - Three Quarter Height Window (Approx. 750mm high parapet wall)
 Unless otherwise indicated all windows will be standard height windows.

BLK 447A
 (10TH TO 22ND STOREY FLOOR PLAN)



The coloured floor plan is not intended to demarcate the boundary of the flat.



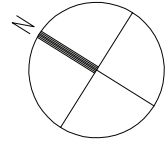
LEGEND:

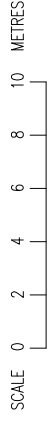
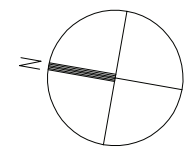
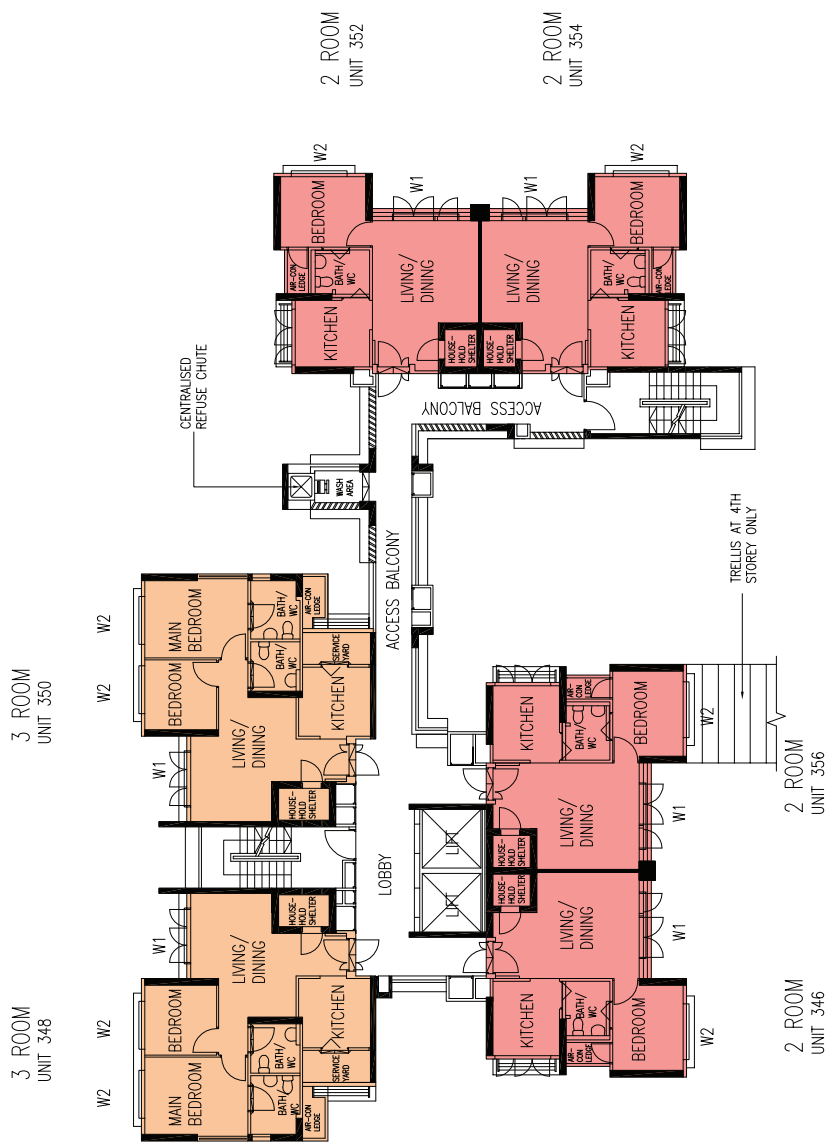
- 2 Room
- 3 Room
- 4 Room

W1 - Full Height Window

W2 - Three Quarter Height Window (Approx. 750mm high parapet wall)
 Unless otherwise indicated all windows will be standard height windows.

The coloured floor plan is not intended to demarcate the boundary of the flat.



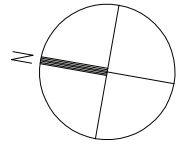
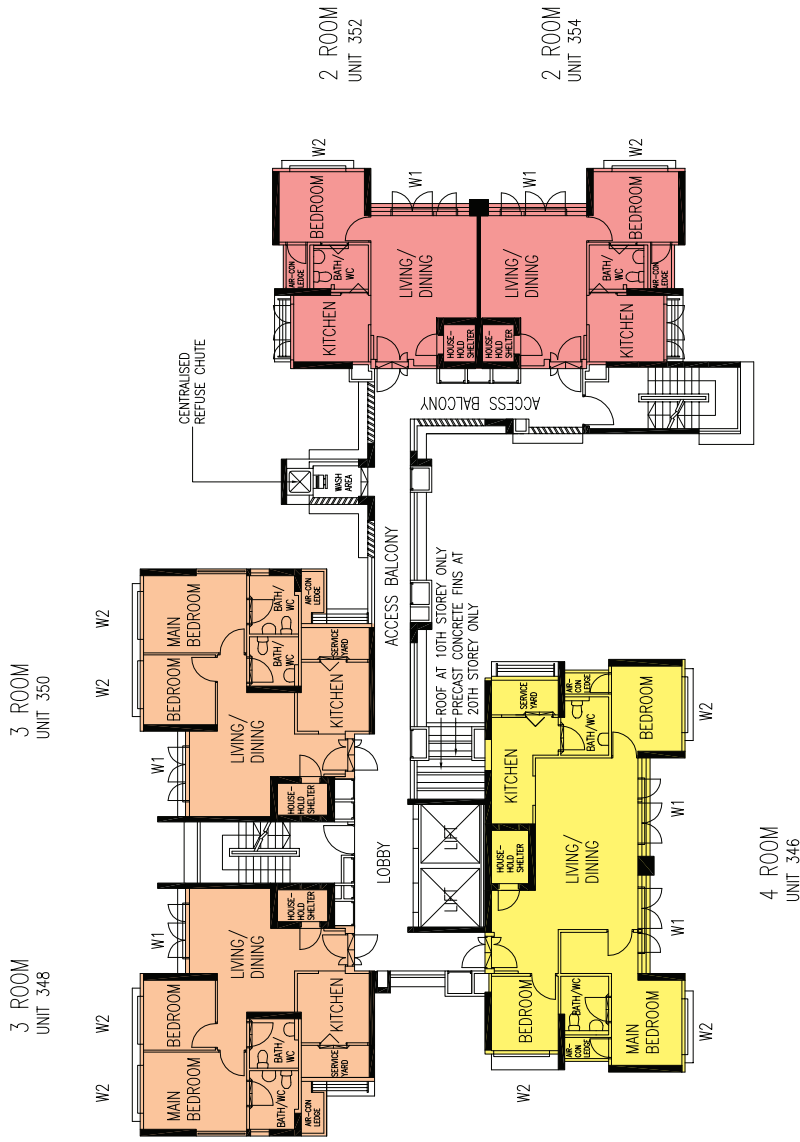


BLK 447B
(4TH TO 9TH STOREY FLOOR PLAN)

- LEGEND:**
- 2 Room
 - 3 Room
 - 4 Room

W1 - Full Height Window
 W2 - Three Quarter Height Window (Approx. 750mm high parapet wall)
 Unless otherwise indicated all windows will be standard height windows.

The coloured floor plan is not intended to demarcate the boundary of the flat.



BLK 447B
(10TH TO 22ND STOREY FLOOR PLAN)

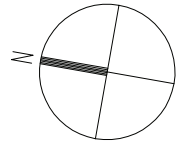
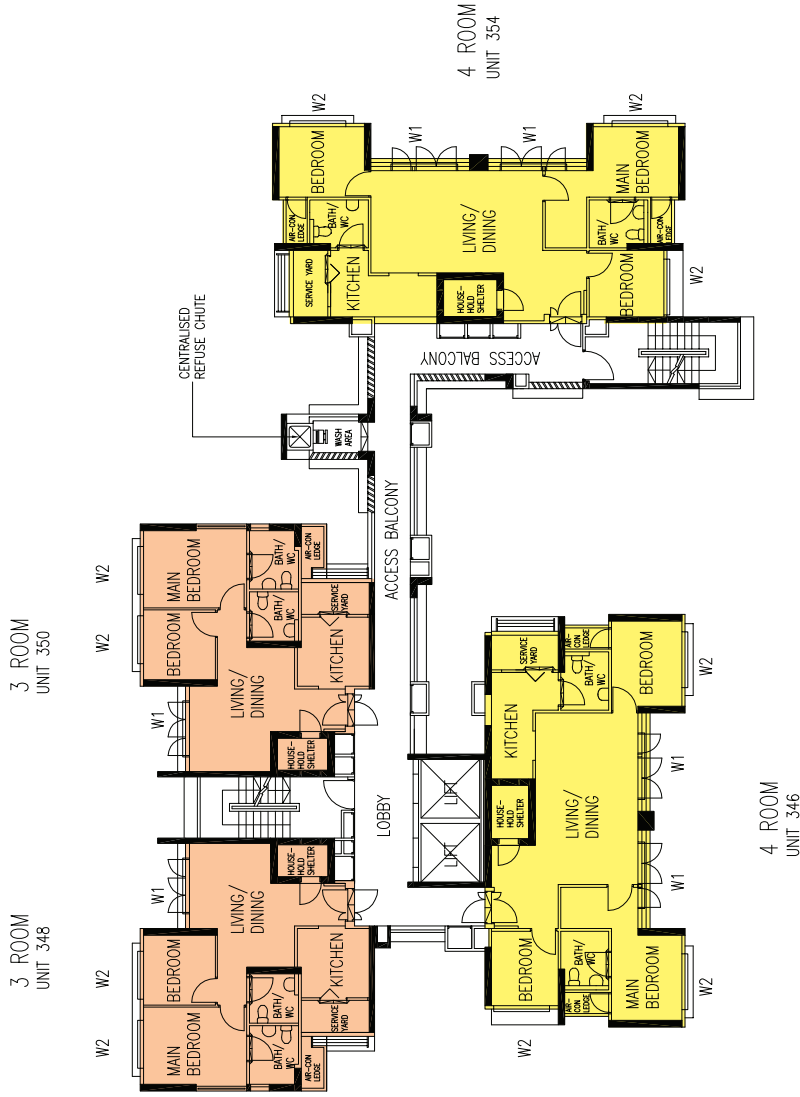
LEGEND:

- 2 Room
- 3 Room
- 4 Room

W1 - Full Height Window

W2 - Three Quarter Height Window (Approx. 750mm high parapet wall)
Unless otherwise indicated all windows will be standard height windows.

The coloured floor plan is not intended to demarcate the boundary of the flat.



BLK 447B
(23RD TO 24TH STOREY FLOOR PLAN)

LEGEND:

- 2 Room
- 3 Room
- 4 Room

W1 - Full Height Window

W2 - Three Quarter Height Window (Approx. 750mm high parapet wall)
Unless otherwise indicated all windows will be standard height windows.

The coloured floor plan is not intended to demarcate the boundary of the flat.

General Specifications for Fernvale Lodge

General Specifications for 2 & 3 Room

Foundation

Piled foundation.

Structure

Reinforced concrete structural framework with reinforced concrete slabs.

Roof

Reinforced concrete roof slab with precast concrete secondary roofing.

Walls

All external and internal walls are constructed with reinforced concrete/solid blocks/bricks with cement plastering/ precast panels/precast lightweight concrete partitions.

Windows

Aluminium frame windows with tinted glass.

Doors

Entrance	: decorative solid timber door and metal gate
Bedrooms	: decorative semi-solid timber door (Type D9)
Bathroom/WC	: laminated semi-solid timber door for 3 Room (TypeD9a) : acrylic panel folding door for 2 room
Household Shelter	: metal door
Service Yard	: aluminium framed door with glass

Finishes

Ceiling	: skim coated or plastered and painted
Kitchen/Bathroom/WC wall	: glazed ceramic tiles
Other walls	: skim coated or plastered and painted
Living/Dining/Bedroom floor	: ceramic tiles with timber skirting
Kitchen/Bathroom/WC floor	: ceramic tiles
Service Yard floor	: ceramic tiles with tile skirting
Household Shelter floor	: ceramic tiles

Fittings

Quality locksets
Quality sanitary fittings
Clothes Drying Rack

Services

Gas services and concealed water supply pipes
Concealed electrical wiring to lighting and power points (including water heater and air conditioning points)
Television points
Telephone points

Important Notes:

- 1) The Household Shelter is designed for use as civil defence shelter. The walls, ceiling, floor and door of the Household Shelter shall not be hacked, drilled, altered or removed.
- 2) Air-con panel in the main bedroom will be not provided.
- 3) Any unused or unoccupied open spaces in front of or nearby / adjacent to the flat units are not available for purchase and that the HDB will not entertain any requests from the flat owners to purchase and / or enclose the unused or unoccupied open spaces.

You are advised to visit HDB's website at www.hdb.gov.sg for information on renovations rules.

The plans and information in this brochure are the copyright of the Housing & Development Board (HDB), Singapore. The HDB reserves the right at any time without notice and at its sole discretion, to change any aspect of this project including but not limited to the omission, amalgamation of or increasing or reducing the communal facilities and amenities. All art renderings, illustrations, pictures, photographs, and other graphic representations and references are artist's impressions only. Similarly, all dimensions, areas, plans, colour schemes, descriptions and specifications noted herein are subject to change or alteration without notice if required by the Competent Authority or at HDB's sole and absolute discretion. The HDB will not entertain any request for alteration of the layout or specifications of a flat, to meet individual needs. The void deck in any apartment block may subsequently be used for facilities, such as child care centres, education centres, residents' committee centres and such other facilities as HDB shall deem fit.

The floor areas are scaled Strata Areas.

General Specifications for Fernvale Lodge

General Specifications for 4 Room

Foundation

Piled foundation.

Structure

Reinforced concrete structural framework with reinforced concrete slabs.

Roof

Reinforced concrete roof slab with precast concrete secondary roofing.

Walls

All external and internal walls are constructed with reinforced concrete/solid blocks/bricks with cement plastering/ precast panels/precast lightweight concrete partitions.

Windows

Aluminium frame windows with tinted glass.

Doors

Entrance	: decorative solid timber door and metal gate
Bedrooms	: decorative semi-solid timber door (Type D9)
Bathroom/WC	: laminated semi-solid timber door (TypeD9a)
Household Shelter	: metal door
Service Yard	: aluminium framed door with glass

Finishes

Ceiling	: skim coated or plastered and painted
Kitchen/Bathroom/WC wall	: glazed ceramic tiles
Other walls	: skim coated or plastered and painted
Living/Dining/Bedroom floor	: cement screed
Kitchen/Bathroom/WC floor	: ceramic tiles
Service Yard floor	: ceramic tiles with tile skirting
Household Shelter floor	: ceramic tiles

Fittings

Quality locksets
Quality sanitary fittings
Clothes Drying Rack

Services

Gas services and concealed water supply pipes
Concealed electrical wiring to lighting and power points (including water heater and air conditioning points)
Television points
Telephone points

Important Notes:

- 1) The Household Shelter is designed for use as civil defence shelter. The walls, ceiling, floor and door of the Household Shelter shall not be hacked, drilled, altered or removed.
- 2) Air-con panel in the main bedroom will be not provided.
- 3) Any unused or unoccupied open spaces in front of or nearby / adjacent to the flat units are not available for purchase and that the HDB will not entertain any requests from the flat owners to purchase and / or enclose the unused or unoccupied open spaces.

You are advised to visit HDB's website at www.hdb.gov.sg for information on renovations rules.

The plans and information in this brochure are the copyright of the Housing & Development Board (HDB), Singapore. The HDB reserves the right at any time without notice and at its sole discretion, to change any aspect of this project including but not limited to the omission, amalgamation of or increasing or reducing the communal facilities and amenities. All art renderings, illustrations, pictures, photographs, and other graphic representations and references are artist's impressions only. Similarly, all dimensions, areas, plans, colour schemes, descriptions and specifications noted herein are subject to change or alteration without notice if required by the Competent Authority or at HDB's sole and absolute discretion. The HDB will not entertain any request for alteration of the layout or specifications of a flat, to meet individual needs. The void deck in any apartment block may subsequently be used for facilities, such as child care centres, education centres, residents' committee centres and such other facilities as HDB shall deem fit.

The floor areas are scaled Strata Areas.

Fernvale Crest



Sengkang N4 C10 Standard Flats



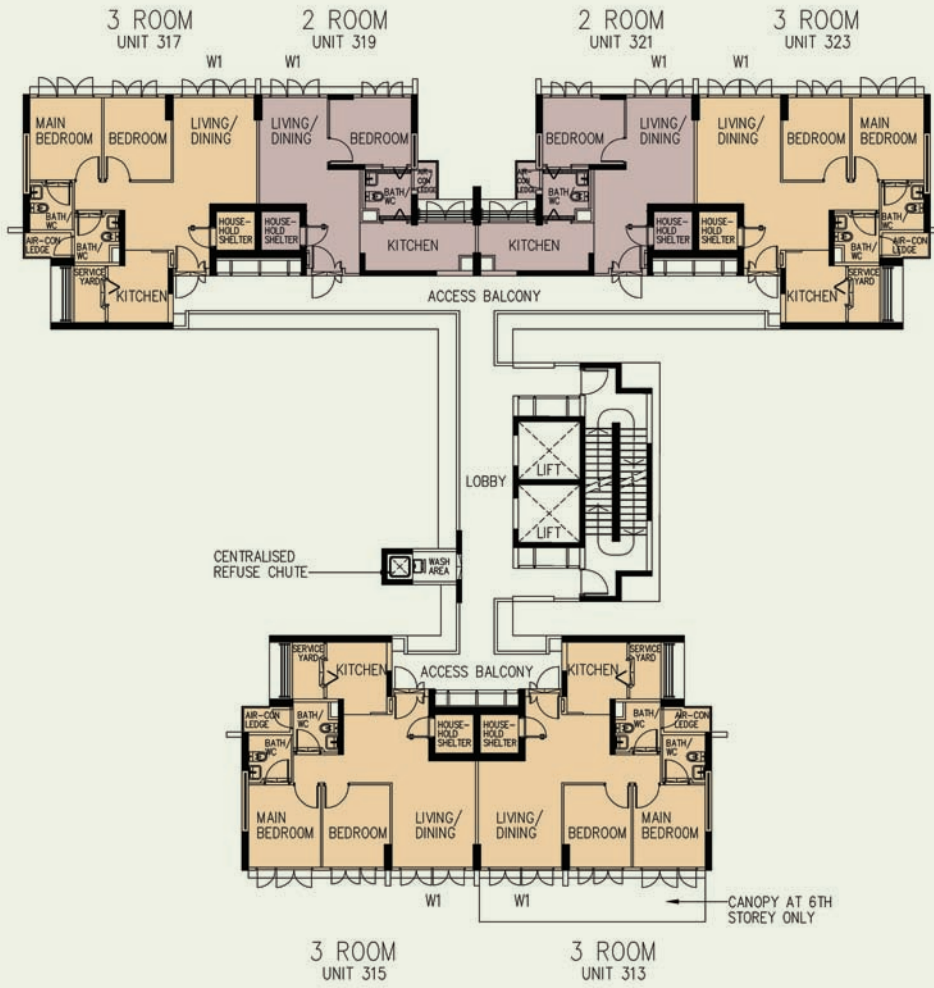
LEGEND:

- | | |
|---|---------------------------------|
| 2 - Room | Open Space |
| 3 - Room | Drainage Reserve |
| 4 - Room | Carparking |
| Surrounding Buildings | Staircase |
| Reserved for / Existing Development | Embankment |
| Linkway / Precinct Pavilion / Drop-Off Porch / Shelter | Centralised Refuse Chute |
| Pergola | Service Bay (loading/unloading) |
| Children's Playground (PG) / Elderly Fitness Station (EFS) / Pebble Walk (PW) / Adult Fitness Station (AFS) | Lift |
| Electrical Substation (ESS) at 1st storey | |
| Utility Centre (UC) at 1st storey | |
| Future Community Facilities (FCF) at 1st Storey | |

Artist's Impression



The information contained herein is subject to change at any time without notice and cannot form part of an offer or contract. The proposed facilities and their locations as shown are only estimates. The proposed facilities may include other ancillary uses allowed under URA's prevailing Development Control guidelines. For example, places of worship may also include columbarium as an ancillary use, while community centres may also include childcare centres. The implementation of the facilities is subject to review by the Government or competent authorities. While reasonable care has been taken in providing this information, HDB shall not be responsible in any way for any damage or loss suffered by any person whether directly or indirectly as a result of reliance on the said information or as a result of any error or omission therein.



LEGEND:

- 2 Room
- 3 Room
- 4 Room

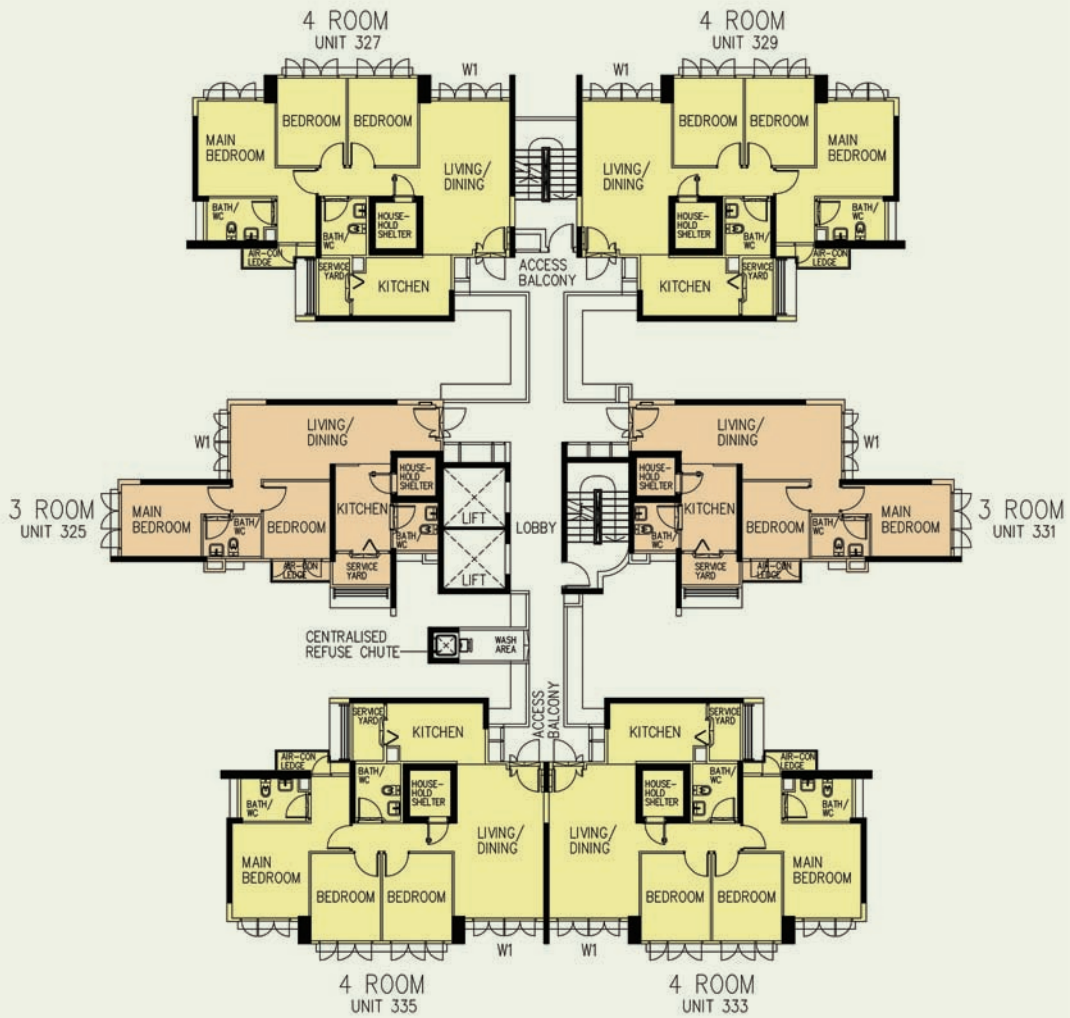
W1 - Three Quarter Height Window (approx. 500mm high parapet wall)
 F - Standard Height Fixed Glass Window

Unless otherwise indicated all windows will be standard height windows.



6TH TO 26TH STOREY FLOOR PLAN
BLOCK 448B

The coloured floor plan is not intended to demarcate the boundary of the flat.



LEGEND:

- 2 Room
- 3 Room
- 4 Room

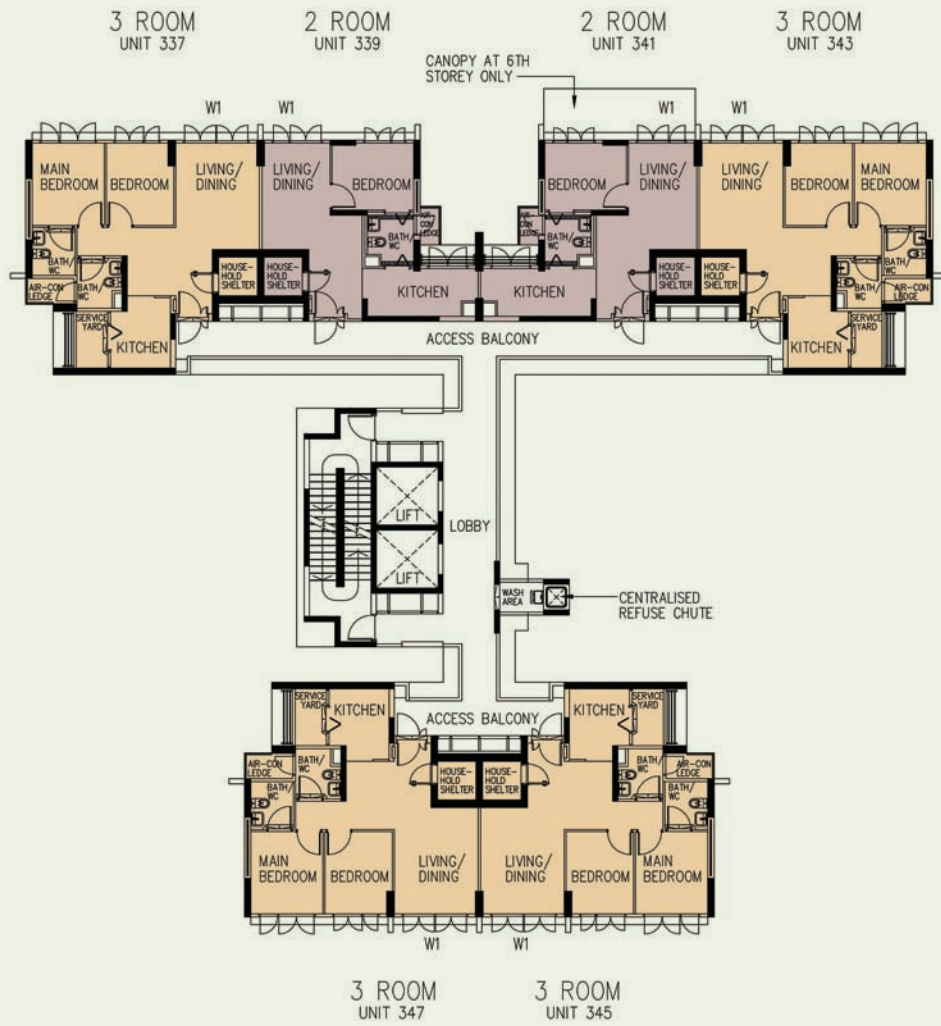
W1 - Three Quarter Height Window (approx. 500mm high parapet wall)
 F - Standard Height Fixed Glass Window

Unless otherwise indicated all windows will be standard height windows.



12TH TO 16TH, 25TH & 26TH STOREY FLOOR PLAN BLOCK 450A

The coloured floor plan is not intended to demarcate the boundary of the flat.



LEGEND:

- 2 Room
- 3 Room
- 4 Room

W1 - Three Quarter Height Window (approx. 500mm high parapet wall)
 F - Standard Height Fixed Glass Window

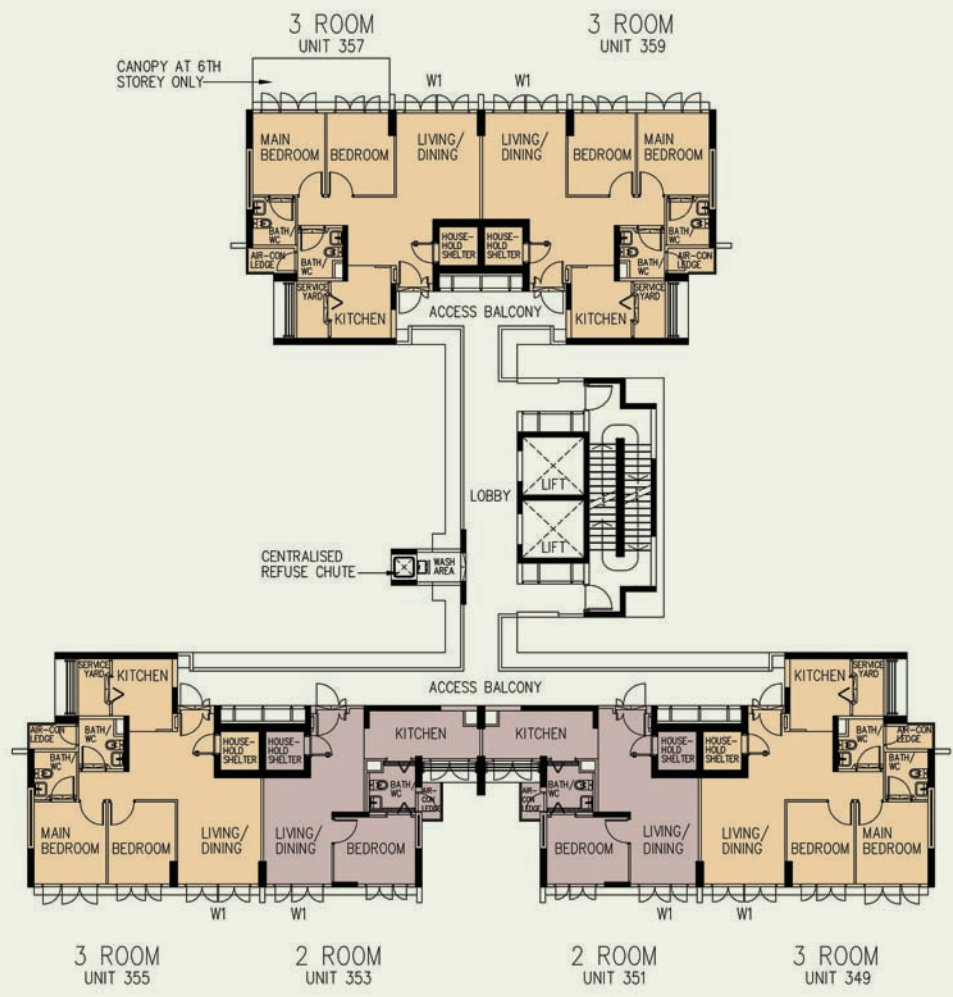
Unless otherwise indicated all windows will be standard height windows.

SCALE 0 2 4 6 8 10 METRES



6TH TO 26TH STOREY FLOOR PLAN BLOCK 450B

The coloured floor plan is not intended to demarcate the boundary of the flat.



LEGEND:

- 2 Room
- 3 Room
- 4 Room

W1 - Three Quarter Height Window (approx. 500mm high parapet wall)
 F - Standard Height Fixed Glass Window

Unless otherwise indicated all windows will be standard height windows.



6TH TO 26TH STOREY FLOOR PLAN BLOCK 450C

The coloured floor plan is not intended to demarcate the boundary of the flat.

General Specifications for Fernvale Crest

Foundation

Piled foundation.

Structure

Reinforced concrete structural framework with reinforced concrete slabs.

Roof

Reinforced concrete roof slab with precast concrete secondary roofing.

Walls

All external and internal walls are constructed with reinforced concrete/solid blocks/bricks with cement plastering/facing bricks/precast panels/ferrolite partition panels.

Windows

Aluminium framed windows with tinted glass.

Doors

Entrance	: decorative solid timber door and metal gate
Bedrooms	: decorative semi-solid timber door (Type D9)
Bath/WC	: laminated semi-solid timber door for 3-Room & 4-Room (Type D9a)
	: acrylic panel folding door for 2-Room
Household Shelter	: metal door
Service Yard	: aluminium framed door with glass

Finishes

Ceilings	: skim coated or plastered and painted
Kitchen/Bathroom/WC walls	: glazed ceramic tiles
Other walls	: skim coated or plastered and painted
Kitchen/Bathroom/WC floor	: ceramic tiles
Household Shelter floor	: ceramic tiles
Service Yard floor	: ceramic tiles with tile skirting

Fittings

Quality locksets
Quality sanitary fittings
Clothes drying rack

Services

Gas services and concealed water supply pipes
Concealed electrical wiring to lighting and power points (including water heater and air-conditioning points)
Television points
Telephone points

Important Notes:

- 1) The Household Shelter is designed for use as civil defence shelter. The walls, ceiling, floor and door of the Household Shelter shall not be hacked, drilled, altered or removed.
- 2) Air-con panel in the main bedroom will be not provided.
- 3) Any unused or unoccupied open spaces in front of or nearby / adjacent to the flat units are not available for purchase and that the HDB will not entertain any requests from the flat owners to purchase and / or enclose the unused or unoccupied open spaces.

You are advised to visit HDB's website at www.hdb.gov.sg for information on renovations rules.

The plans and information in this brochure are the copyright of the Housing & Development Board (HDB), Singapore. The HDB reserves the right at any time without notice and at its sole discretion, to change any aspect of this project including but not limited to the omission, amalgamation of or increasing or reducing the communal facilities and amenities. All art renderings, illustrations, pictures, photographs and other graphic representations and references are artist's impressions only. Similarly all dimensions, areas, plans, colour schemes, descriptions and specifications, noted herein are subject to change or alteration without notice if required by the Competent Authority or at HDB's sole and absolute discretion. The HDB will not entertain any request for alteration of the layout or specifications of a flat, to meet individual needs. The void deck in any apartment block may subsequently be used for facilities, such as child care centres, education centres, residents' committee centres and such other facilities as HDB may deem fit.

The Floor Areas are scaled Strata Areas.