

SEMBAWANG Town Map



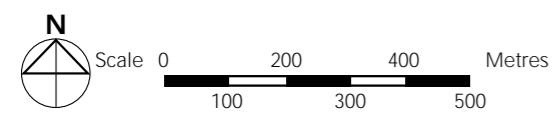
- LEGEND:**
- Contracts with Premium Flats
 - Contracts with Standard Flats
 - MRT Line & Station
 - Future Road
 - Existing Eating Establishment/Minimart/Shops
 - Existing Shops/Minimart

Notes:
 All proposed developments are subject to change and planning approval.

Proposed Civic & Community Institution includes examples like Community Centre/Club, Association, Home for the Aged, etc., subject to change and planning approval.

Proposed Place of Worship includes examples like Church, Mosque, Chinese Temple, Hindu Temple, etc., subject to change and planning approval.

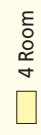
Proposed Health & Medical Care (eg. Nursing Home), subject to change and planning approval.



The information contained herein is subject to change at any time without notice and cannot form part of an offer or contract. The proposed facilities and their locations as shown are only estimates. The proposed facilities may include other ancillary uses allowed under URA's prevailing Development Control guidelines. For example, places of worship may also include columbarium as an ancillary use, while community centres may also include childcare centres. The implementation of the facilities is subject to review by the Government or competent authorities. While reasonable care has been taken in providing this information, HDB shall not be responsible in any way for any damage or loss suffered by any person whether directly or indirectly as a result of reliance on the said information or as a result of any error or omission therein.



LEGEND:



SCALE 0 2 4 6 8 10 METRES

2ND TO 18TH STOREY FLOOR PLAN BLOCK 490

- BW - Bay Window (approx. 500mm high parapet wall)
 - W1 - Three Quarter Height Window (approx. 500mm high parapet wall)
 - W2 - Three Quarter Height Window (approx. 700mm high parapet wall)
- Unless otherwise indicated all windows will be standard height windows.

The coloured floor plan is not intended to demarcate the boundary of the flat.

General Specifications for Sembawang Green

Foundation

Driven steel H-piles

Structure

Reinforced concrete structural framework with reinforced concrete slabs

Roof

Reinforced concrete roof slab with precast concrete secondary roofing

Walls

All external and internal walls are constructed with reinforced concrete/solid blocks/bricks with cement plastering/facing bricks/precast panels/precast lightweight concrete partitions

Windows

Aluminium framed windows with tinted glass.

Doors

Entrance	: decorative solid timber door and metal gate
Bedroom	: decorative semi-solid timber door (Type D9)
Bathroom/WC	: laminated semi-solid timber door (Type D9a)
Household Shelter	: metal door
Service Yard	: aluminium framed door with glass

Finishes

Ceilings	: skim coated or plastered and painted
Kitchen/Bathrooms/WC wall	: glazed ceramic tiles
Other walls	: skim coated or plastered and painted
Kitchen/Bathroom/WC floor	: ceramic tiles
Household Shelter floor	: ceramic tiles
Service Yard floor	: ceramic tiles with tile skirting

Fittings

Quality locksets
Quality sanitary fittings
Clothes drying rack

Services

All units have gas service and concealed water supply pipes
Concealed electrical wiring to lighting and power points (including water heater and air-conditioning points)
Television points
Telephone points

Important Notes:

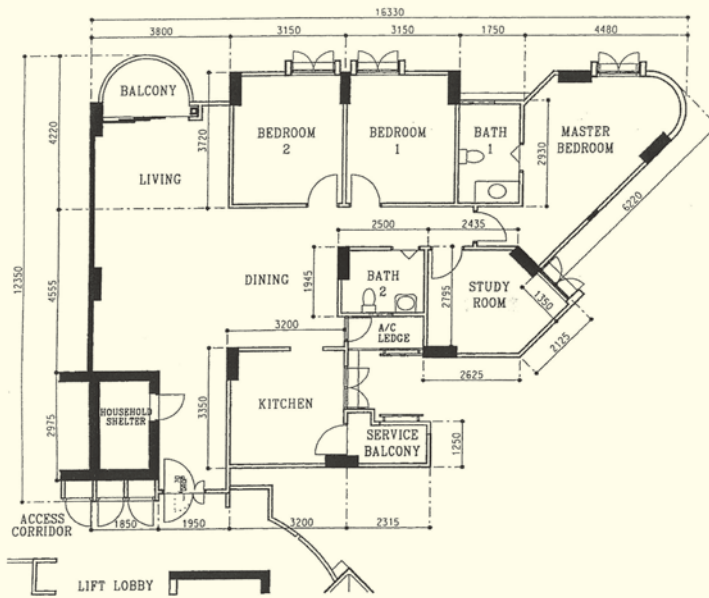
The Household Shelter is designed for use as civil defence shelter. The walls, ceiling, floor and door of the Household Shelter shall not be hacked, drilled, altered or removed.

Air-con panel in the main bedroom will not be provided.

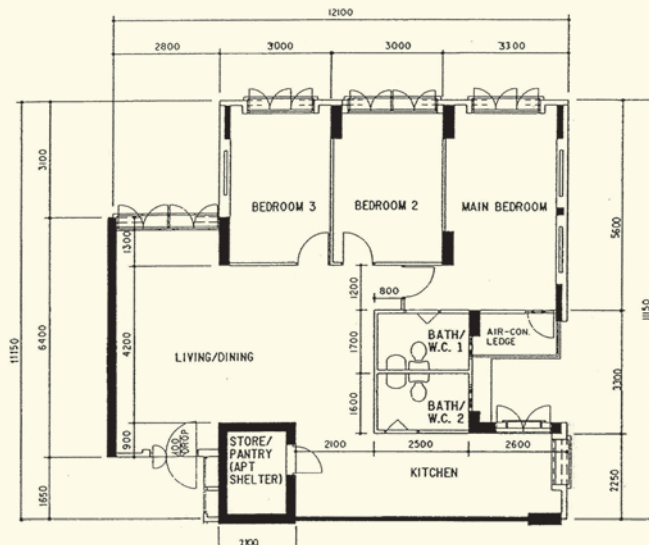
You are advised to visit HDB's website at www.hdb.gov.sg for information on renovation rules.

The plans in this brochure are the copyright of the Housing & Development Board (HDB), Singapore. The HDB reserves the right at any time, without notice and at its sole discretion, to change any aspect of this project including but not limited to the omission, amalgamation of or increasing or reducing the number of communal facilities and amenities. Similarly, all dimensions, areas, plans, colour schemes, descriptions and specifications noted herein are subject to change or alteration without notice if required by the competent Authority or at HDB's sole and absolute discretion. The HDB will not entertain any request for alteration of the layout or specifications of a flat, to meet individual needs. The void deck in any apartment block may subsequently be used for facilities, such as child care centres, education centres, residents' committee centres and such other facilities as HDB shall deem fit.

The Floor Areas are scaled Strata Areas.

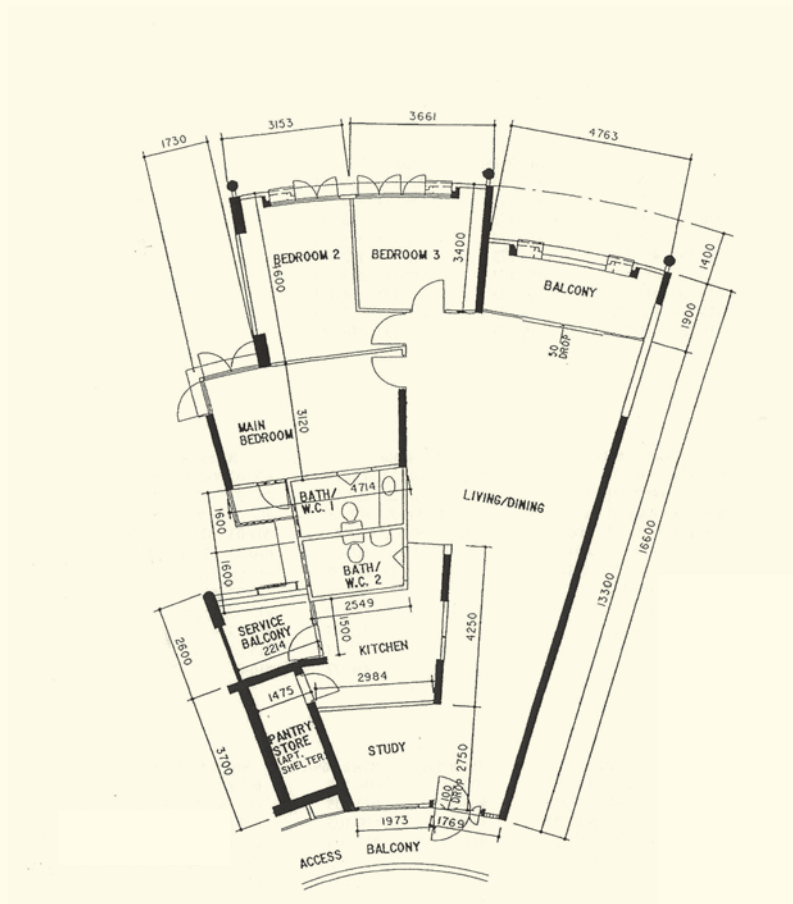


**Premium Flat
Executive
Sun Bliss
SB N3 C17
Block 359C, #09-26****



**5 - Room
SB N4 C2
Block 417, #07-373****

**This is a Repurchased Flat
Photographs and the revised floor plan (if any) can be viewed at www.hdb.gov.sg/esales



**Premium Flat
Executive**
SB N4 C5
Block 469B, #11-69**

**This is a Repurchased Flat
Photographs and the revised floor plan (if any) can be viewed at www.hdb.gov.sg/esales