

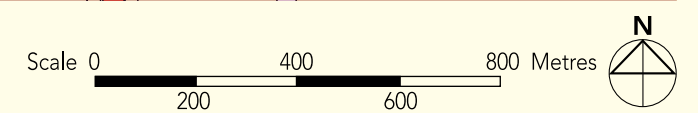
# SENGKANG Town Map



## LEGEND:

- |                               |                                    |                    |
|-------------------------------|------------------------------------|--------------------|
| Contracts with Premium Flats  | Existing Eating House/Shops        | Common Green       |
| Contracts with Standard Flats | Existing Shops/Minimart/Offices    | Future Road        |
| MRT Line & Station            | Future Eating House/Minimart/Shops | Under Construction |
| LRT Line & Station            |                                    |                    |

**Notes:**  
 All proposed developments are subject to change and planning approval.  
 Proposed Civic & Community Institution includes examples like Community Centre/Club, Association, Home for the Aged, etc., subject to change and planning approval.  
 Proposed Place of Worship includes examples like Church, Mosque, Chinese Temple, Hindu Temple, etc., subject to change and planning approval.  
 Proposed Health & Medical Care (eg. Nursing Home), subject to change and planning approval.



The information contained herein is subject to change at any time without notice and cannot form part of an offer or contract. The proposed facilities and their locations as shown are only estimates. The proposed facilities may include other ancillary uses allowed under URA's prevailing Development Control guidelines. For example, places of worship may also include columbarium as an ancillary use, while community centres may also include childcare centres. The implementation of the facilities is subject to review by the Government or competent authorities. While reasonable care has been taken in providing this information, HDB shall not be responsible in any way for any damage or loss suffered by any person whether directly or indirectly as a result of reliance on the said information or as a result of any error or omission therein.

# Compassvale View



**Sengkang N2 C3A**  
Standard Flats



**LEGEND:**

- 3 - Room
- 4 - Room
- Surrounding Buildings
- Reserved for / Existing Development
- Linkway / Precinct Pavilion / Pergola / Drop-Off Porch / Shelter
- Children Playground (PG) / Fitness Station / Elderly Fitness Station
- Electrical Substation (ESS) on 1st Storey
- Carparking
- Drainage Reserve
- Open Space
- Staircase
- Service Bay
- Centralised Refuse Chute (CRC)
- Lift
- (u/c) Under Construction

The information contained herein is subject to change at any time without notice and cannot form part of an offer or contract. The proposed facilities and their locations as shown are only estimates. The proposed facilities may include other ancillary uses allowed under URA's prevailing Development Control guidelines. For example, places of worship may also include columbarium as an ancillary use, while community centres may also include childcare centres. The implementation of the facilities is subject to review by the Government or competent authorities. While reasonable care has been taken in providing this information, HDB shall not be responsible in any way for any damage or loss suffered by any person whether directly or indirectly as a result of reliance on the said information or as a result of any error or omission therein.

Artist's Impression



**Window Legend:**

W1 - Three Quarter Height Window (approx. 700mm high parapet wall)

Unless otherwise indicated all windows will be standard height windows.

**4TH, 8TH, 12TH & 16TH STOREY FLOOR PLAN**  
BLOCK 208B

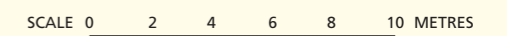
**Additional Features:**

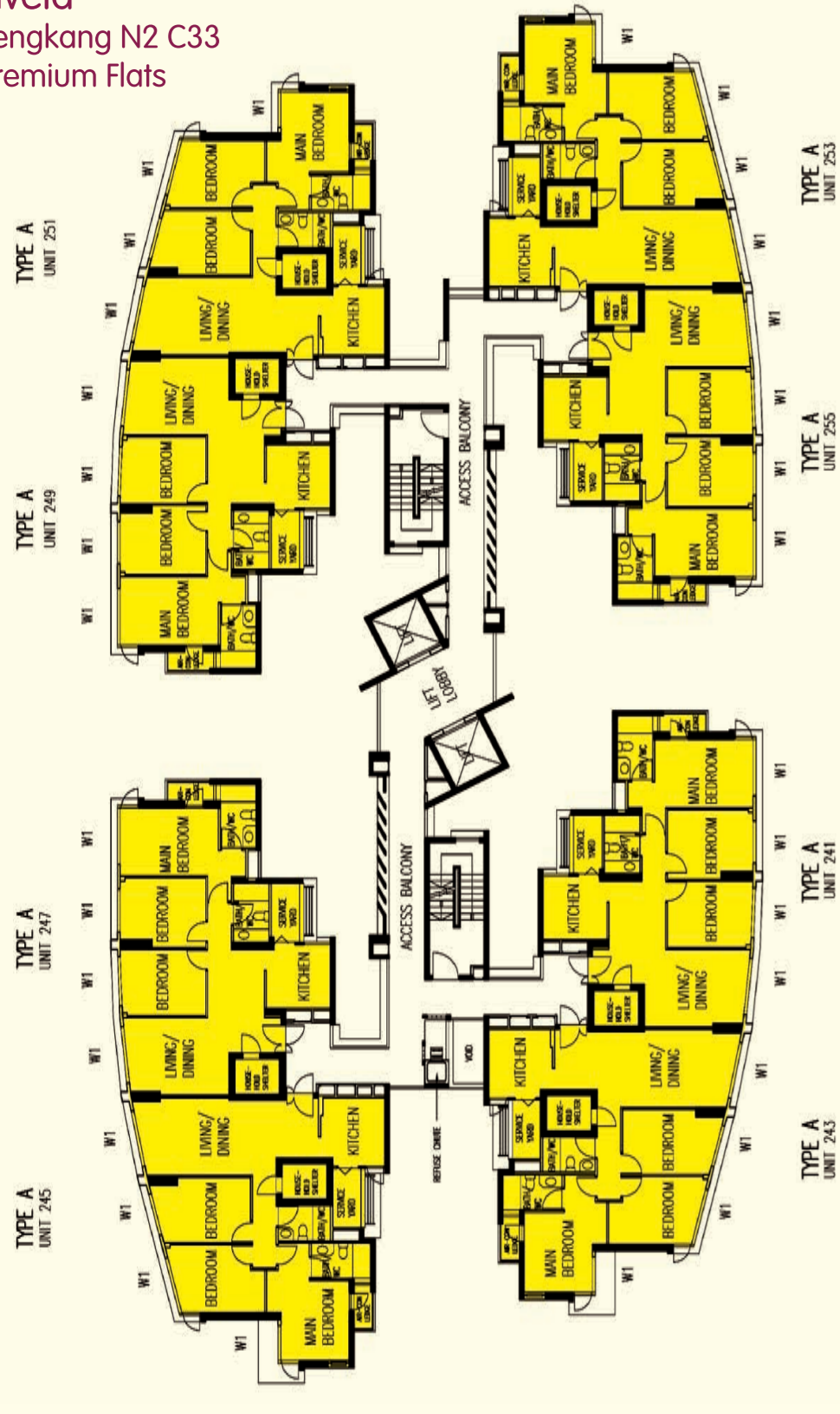
- Bedroom : Decorative Semi-Solid Timber Doors (Type D9)
- Bathrooms/WC : Laminated Semi-Solid Timber Doors (Type D9a)
- Ceramic Tiles to Bathrooms/WC/ Kitchen Floor
- Ceramic Tiles with Tile Skirting to Service Yard Floor
- Ceramic Tiles to Household Shelter Floor
- Concealed Electrical Wiring & Water Supply Pipes

*The coloured floor plan is not intended to demarcate the boundary of the flat.*

**LEGEND:**

- 3 Room
- 4 Room





LEGEND:  
 4 Room/Type A  
 SCALE 0 2 4 6 8 10 METRES

**7TH TO 16TH STOREY FLOOR PLAN  
BLOCK 270A**

*The coloured floor plan is not intended to demarcate the boundary of the flat.*

W1 - Three Quarter Height Window

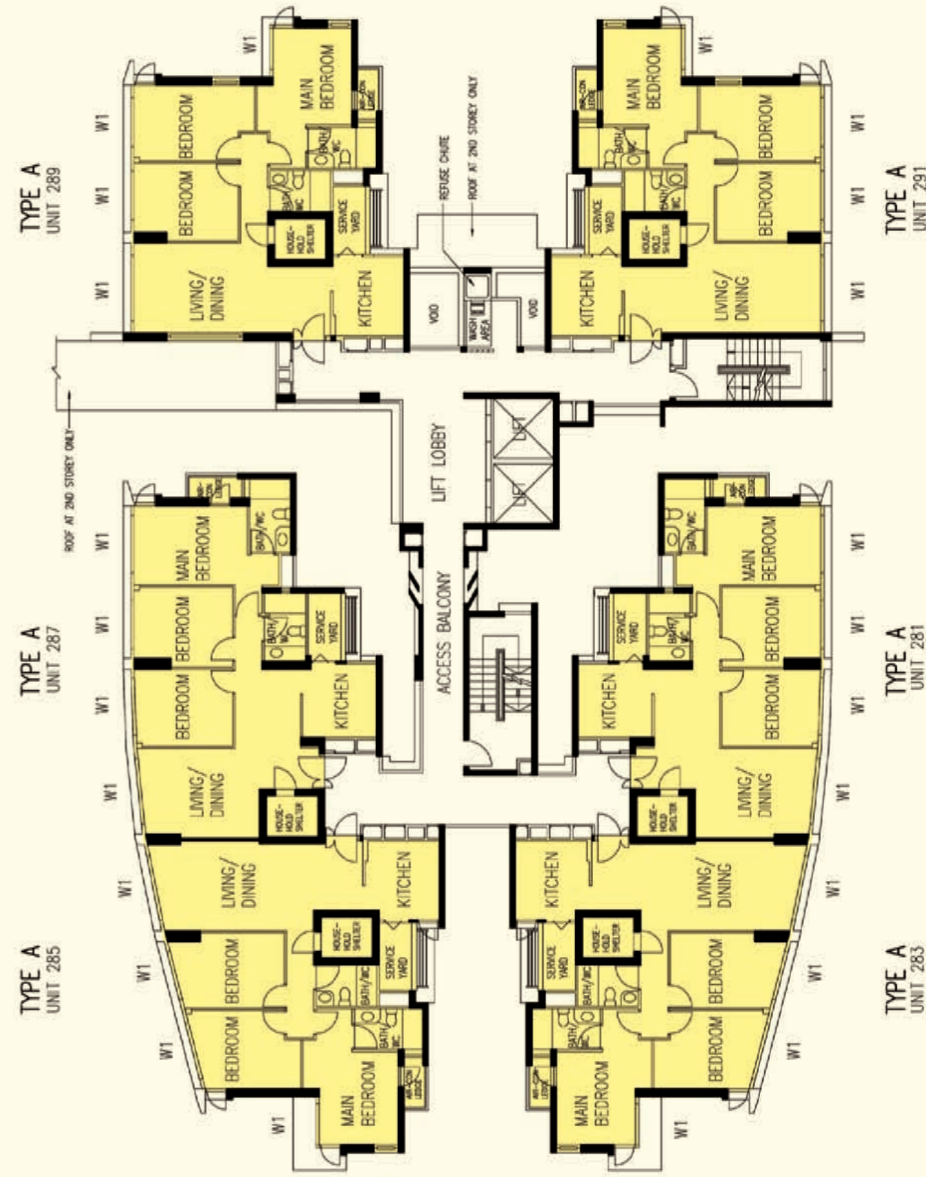
Unless otherwise indicated all windows will be standard height windows.

**This is a Premium Flat.**

**It is provided with:**

- Bedrooms : Decorative Solid Timber Door (Type D5)
- Bathroom/WC : Laminated Semi-Solid Timber Door (Type D5a)
- Ceramic Tiles to Bathroom/WC Floors
- Glazed Porcelain Ceramic Tiles with Tile Skirting to Service Yard Floor
- Glazed Porcelain Ceramic Tiles with Timber Skirting to Living/Dining Floor
- Timber Strip Flooring with Timber Skirting to Bedroom Floor
- Glazed Porcelain Ceramic Tiles to Kitchen/Household Shelter Floor
- Vanity top wash basin at Bathroom/WC, hot water pipes and tap/shower/bath mixers
- Concealed Electrical Wiring and Water Supply Pipes

*The coloured floor plan is not intended to demarcate the boundary of the flat.*



LEGEND:  
 4 Room/Type A  
 SCALE 0 2 4 6 8 10 METRES

**2ND TO 16TH STOREY FLOOR PLAN  
BLOCK 271C**

*The coloured floor plan is not intended to demarcate the boundary of the flat.*

W1 - Three Quarter Height Window

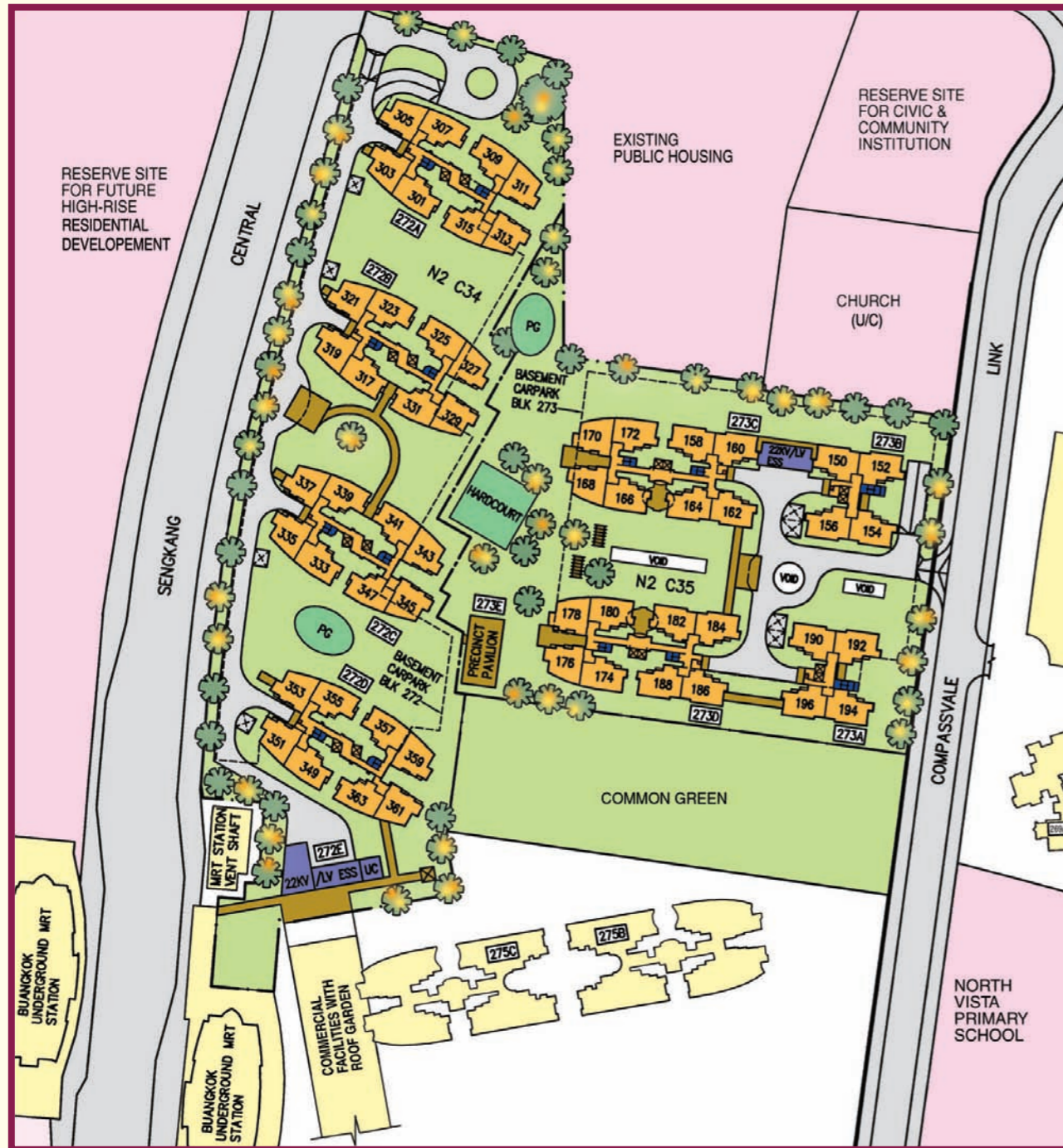
Unless otherwise indicated all windows will be standard height windows.

**This is a Premium Flat.**

**It is provided with:**

- Bedrooms : Decorative Solid Timber Door (Type D5)
- Bathroom/WC : Laminated Semi-Solid Timber Door (Type D5a)
- Ceramic Tiles to Bathroom/WC Floors
- Glazed Porcelain Ceramic Tiles with Tile Skirting to Service Yard Floor
- Glazed Porcelain Ceramic Tiles with Timber Skirting to Living/Dining Floor
- Timber Strip Flooring with Timber Skirting to Bedroom Floor
- Glazed Porcelain Ceramic Tiles to Kitchen/Household Shelter Floor
- Vanity top wash basin at Bathroom/WC, hot water pipes and tap/shower/bath mixers
- Concealed Electrical Wiring and Water Supply Pipes

*The coloured floor plan is not intended to demarcate the boundary of the flat.*



**Sengkang N2 C34**  
Premium Flats

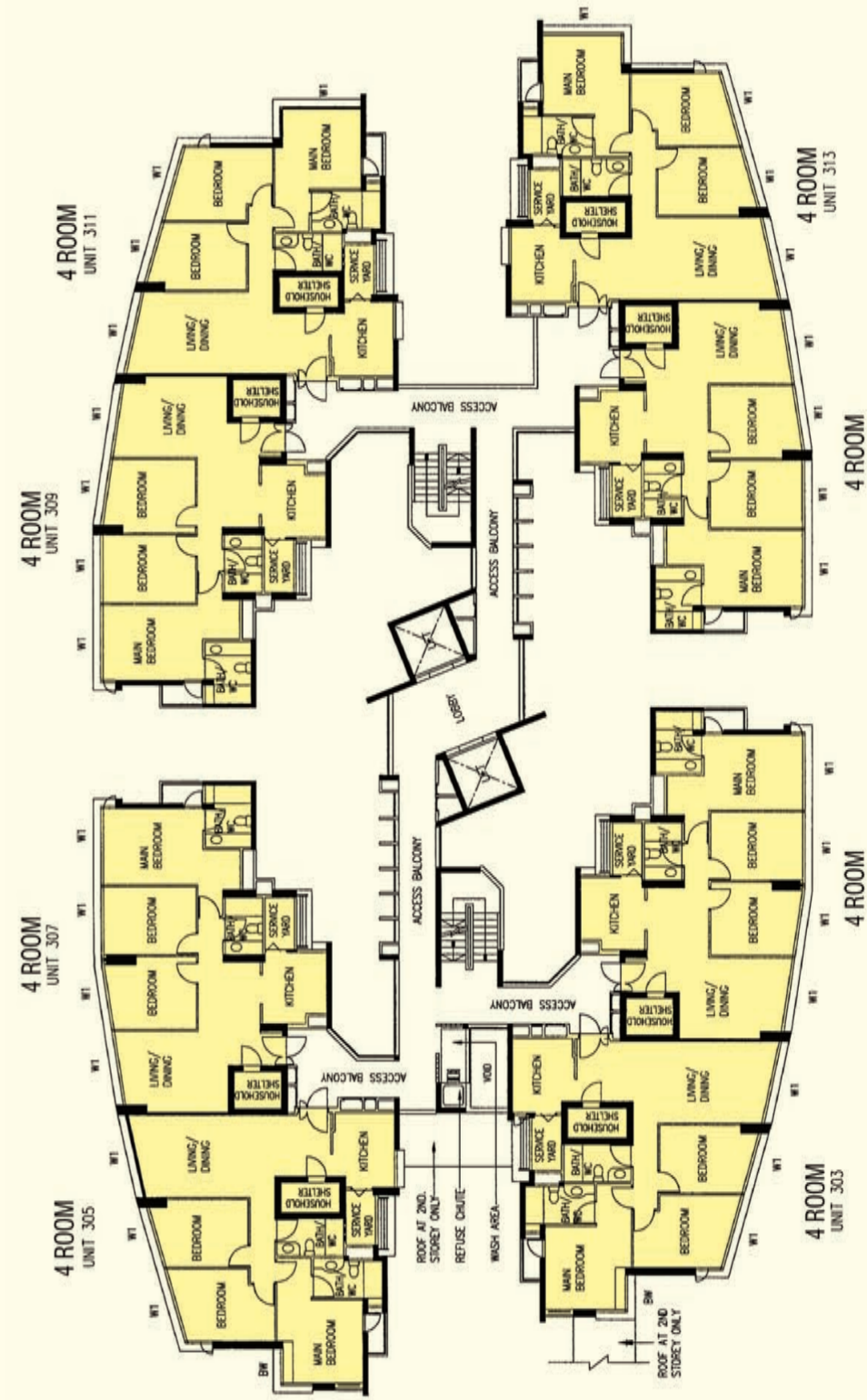


Notes:  
Reserve Site for Civic & Community Institution includes examples like Community Centre/Club, Association, Home for the Aged, etc., subject to change and planning approval.

**LEGEND:**

- Residential Units
- Surrounding Buildings
- Single Storey / Precinct Pavilion / Linkway / Shelter / Drop-Off Porch / Pergola
- Reserved for / Existing Development
- Single Storey / Electrical Substation (ESS) / Utility Centre (UC)
- Playground (PG) / Hardcourt
- Open Space
- Staircase
- Centralised Refuse Chute (CRC)
- Lift
- (u/c) Under Construction

The information contained herein is subject to change at any time without notice and cannot form part of an offer or contract. The proposed facilities and their locations as shown are only estimates. The proposed facilities may include other ancillary uses allowed under URA's prevailing Development Control guidelines. For example, places of worship may also include columbarium as an ancillary use, while community centres may also include childcare centres. The implementation of the facilities is subject to review by the Government or competent authorities. While reasonable care has been taken in providing this information, HDB shall not be responsible in any way for any damage or loss suffered by any person whether directly or indirectly as a result of reliance on the said information or as a result of any error or omission therein.



LEGEND:  
4 Room



**2ND TO 12TH STOREY FLOOR PLAN**  
BLOCK 272A

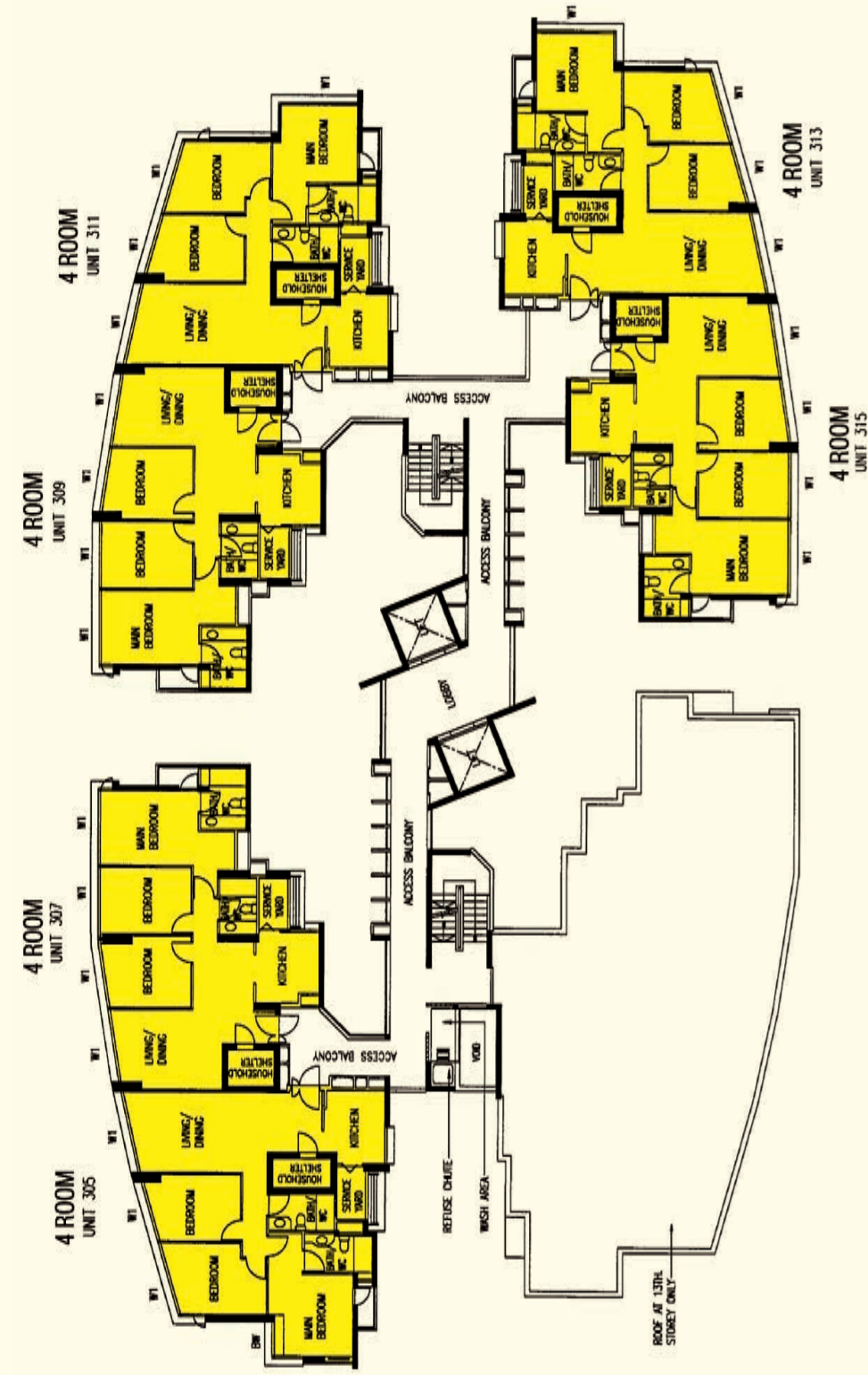
BW - Bay Window (Standard Height)  
W1 - Three Quarter Height Window

Unless otherwise indicated all windows will be standard height windows.

The coloured floor plan is not intended to demarcate the boundary of the flat.

**This is a Premium Contract.**  
**It is provided with:**

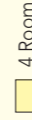
- Bedrooms : Decorative Timber Doors (Type D5)
- Bathrooms/WC : Laminated Timber Doors (Type D5a)
- Living/Dining Floor Finish : Ceramic Tiles with Timber Skirting
- Bedrom Floor Finish : Timber Strip Flooring with Timber Skirting
- Other Floor Finish : Ceramic Tiles
- Concealed Electrical Wiring & Water Supply Pipes



**13TH TO 15TH STOREY FLOOR PLAN  
BLOCK 272A**

*The coloured floor plan is not intended to demarcate the boundary of the flat.*

LEGEND:



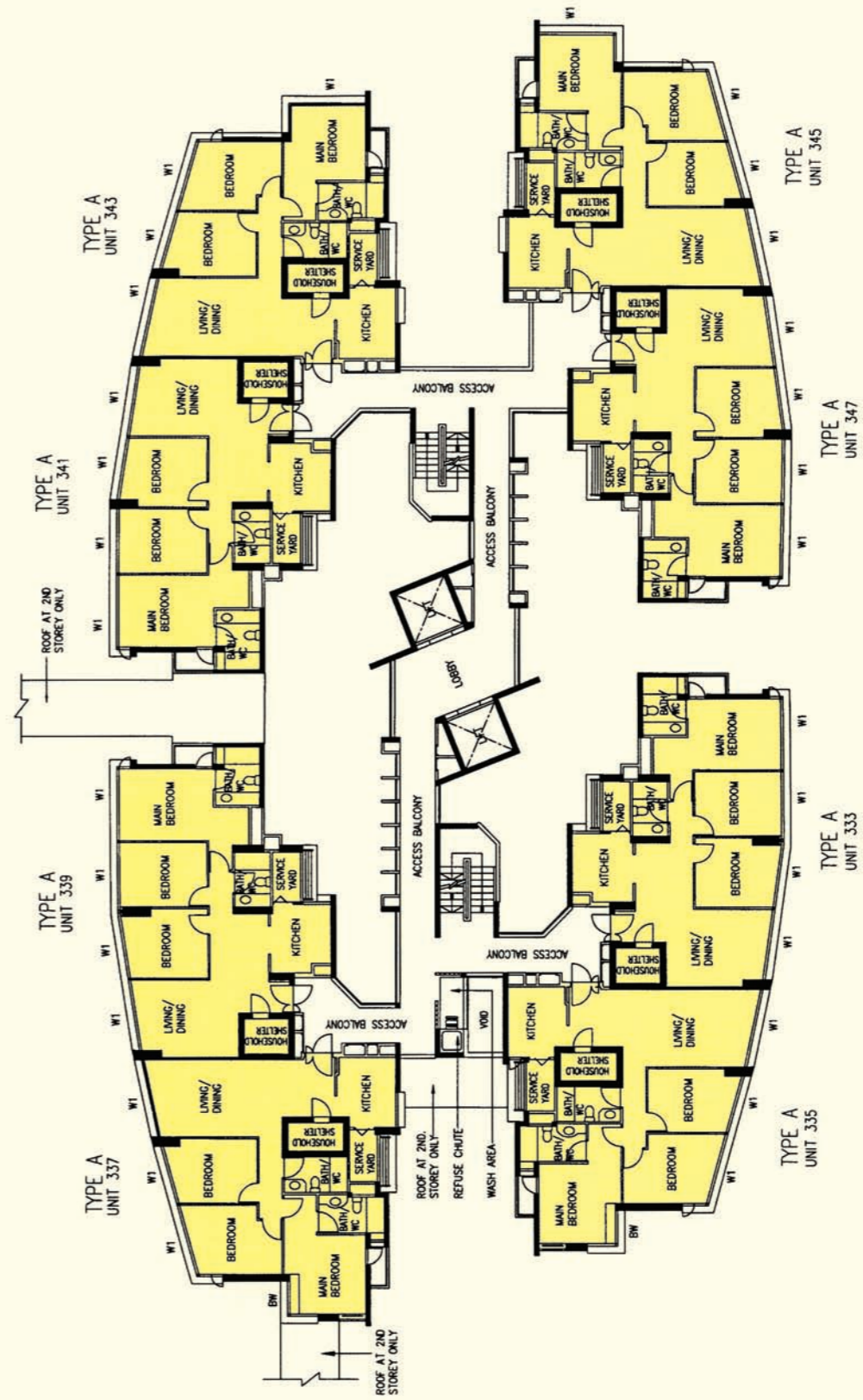
4 Room

SCALE 0 2 4 6 8 10 METRES

BW - Bay Window (Standard Height)

W1 - Three Quarter Height Window

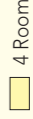
Unless otherwise indicated all windows will be standard height windows.



**2ND TO 12TH STOREY FLOOR PLAN  
BLOCK 272C**

*The coloured floor plan is not intended to demarcate the boundary of the flat.*

LEGEND:



4 Room

SCALE 0 2 4 6 8 10 METRES

BW - Bay Window (Standard Height)

W1 - Three Quarter Height Window

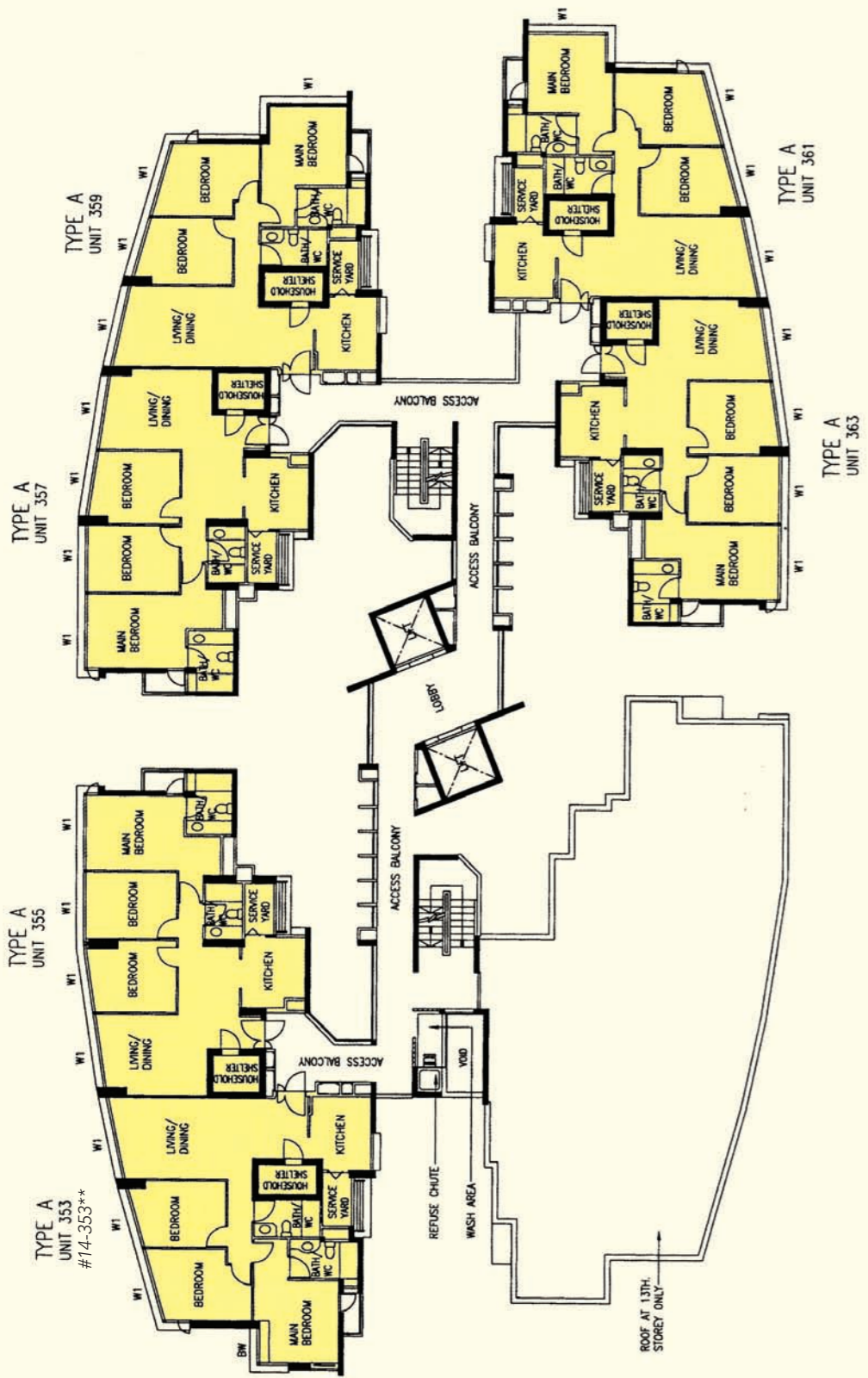
Unless otherwise indicated all windows will be standard height windows.

**This is a Premium Contract.  
It is provided with:**

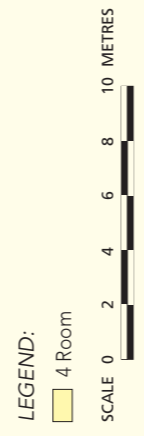
- Bedrooms : Decorative Timber Doors (Type D5)
- Bathrooms/WC : Laminated Timber Doors (Type D5a)
- Living/Dining Floor Finish : Ceramic Tiles with Timber Skirting
- Bedroom Floor Finish : Timber Strip Flooring with Timber Skirting
- Other Floor Finish : Ceramic Tiles
- Concealed Electrical Wiring & Water Supply Pipes

**This is a Premium Contract.  
It is provided with:**

- Bedrooms : Decorative Timber Doors (Type D5)
- Bathrooms/WC : Laminated Timber Doors (Type D5a)
- Living/Dining Floor Finish : Ceramic Tiles with Timber Skirting
- Bedroom Floor Finish : Timber Strip Flooring with Timber Skirting
- Other Floor Finish : Ceramic Tiles
- Concealed Electrical Wiring & Water Supply Pipes



\*\*This is a Repurchased Flat  
Photographs and the revised floor plan (if any) can be viewed at [www.hdb.gov.sg/esales](http://www.hdb.gov.sg/esales)

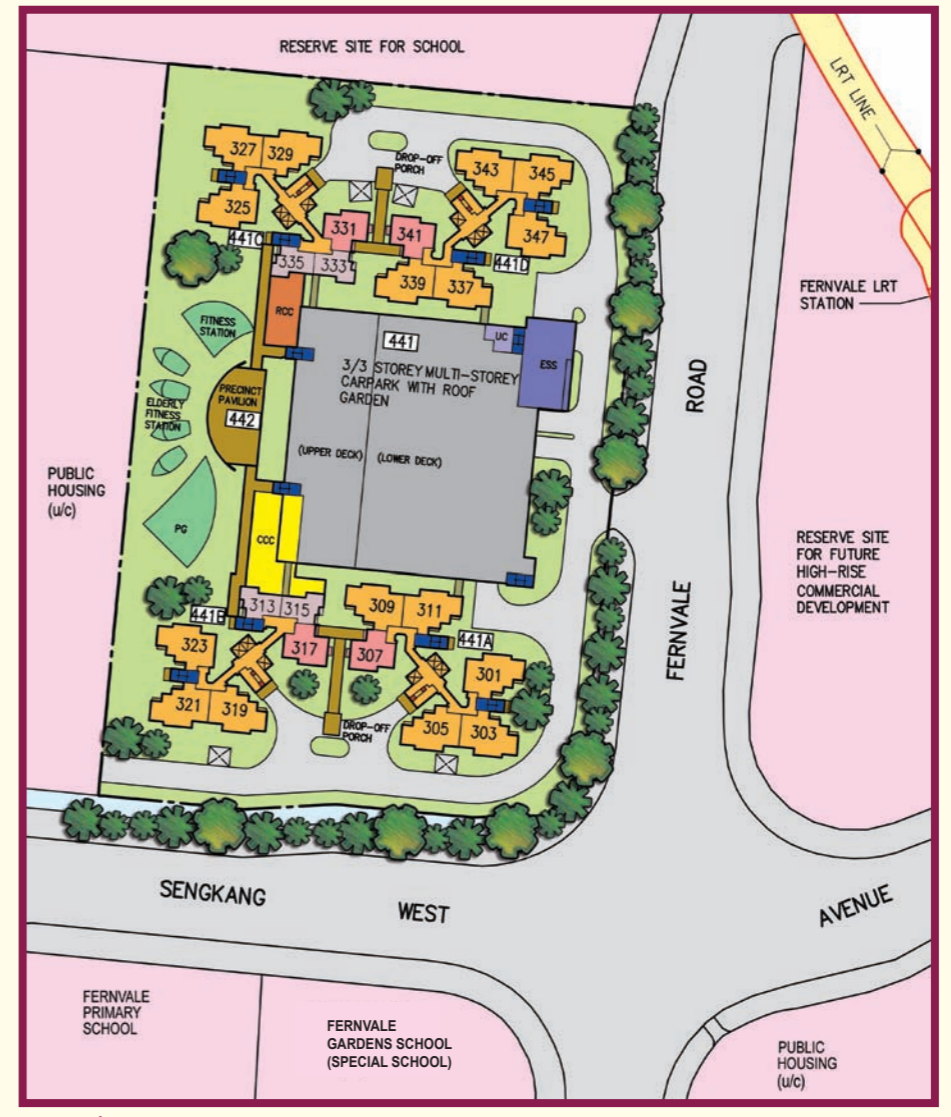


### 13TH TO 15TH STOREY FLOOR PLAN BLOCK 272D

*The coloured floor plan is not intended to demarcate the boundary of the flat.*

BW - Bay Window (Standard Height)  
W1 - Three Quarter Height Window  
Unless otherwise indicated all windows will be standard height windows.

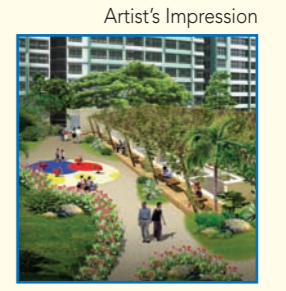
## Fernvale Vista



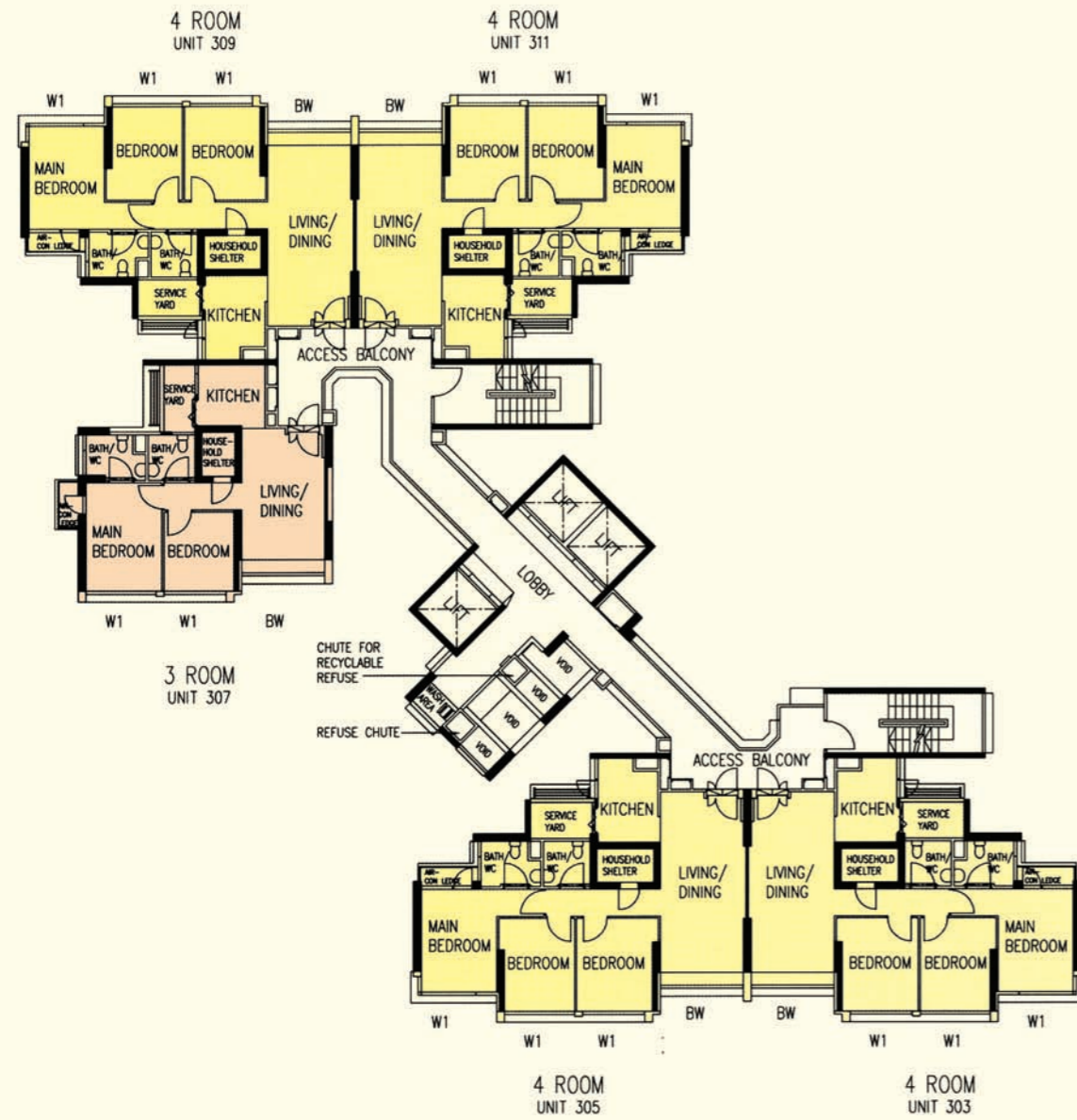
### Sengkang N4 C7 Standard Flats



- LEGEND:**
- 2 - Room
  - 3 - Room
  - 4 - Room
  - Reserved for / Existing Development
  - Single Storey / Linkway / Precinct Pavilion
  - Linkbridge at 2nd, 3rd & 4th Storey
  - Residents' Committee Centre (RCC) at 1st Storey
  - Children Playground (PG) / Fitness Station / Elderly Fitness Station
  - Childcare Centre (CCC) at 1st Storey
  - Electrical Substation (ESS) on 1st Storey
  - Utility Centre (UC) at 1st Storey
  - Carparking
  - Drainage Reserve
  - Open Space
  - Staircase
  - Centralised Refuse Chute (CRC) / Chute for Recyclable Refuse
  - Lift
  - (u/c) Under Construction



The information contained herein is subject to change at any time without notice and cannot form part of an offer or contract. The proposed facilities and their locations as shown are only estimates. The proposed facilities may include other ancillary uses allowed under URA's prevailing Development Control guidelines. For example, places of worship may also include columbarium as an ancillary use, while community centres may also include childcare centres. The implementation of the facilities is subject to review by the Government or competent authorities. While reasonable care has been taken in providing this information, HDB shall not be responsible in any way for any damage or loss suffered by any person whether directly or indirectly as a result of reliance on the said information or as a result of any error or omission therein.



**Window Legend:**  
 W1 - Three Quarter Height Window (approx. 700mm high parapet wall)  
 BW - Bay Window (approx. 600mm high parapet wall)

Unless otherwise indicated all windows will be standard height windows.



### 19TH TO 23RD STOREY FLOOR PLAN BLOCK 441A

**Additional Features:**

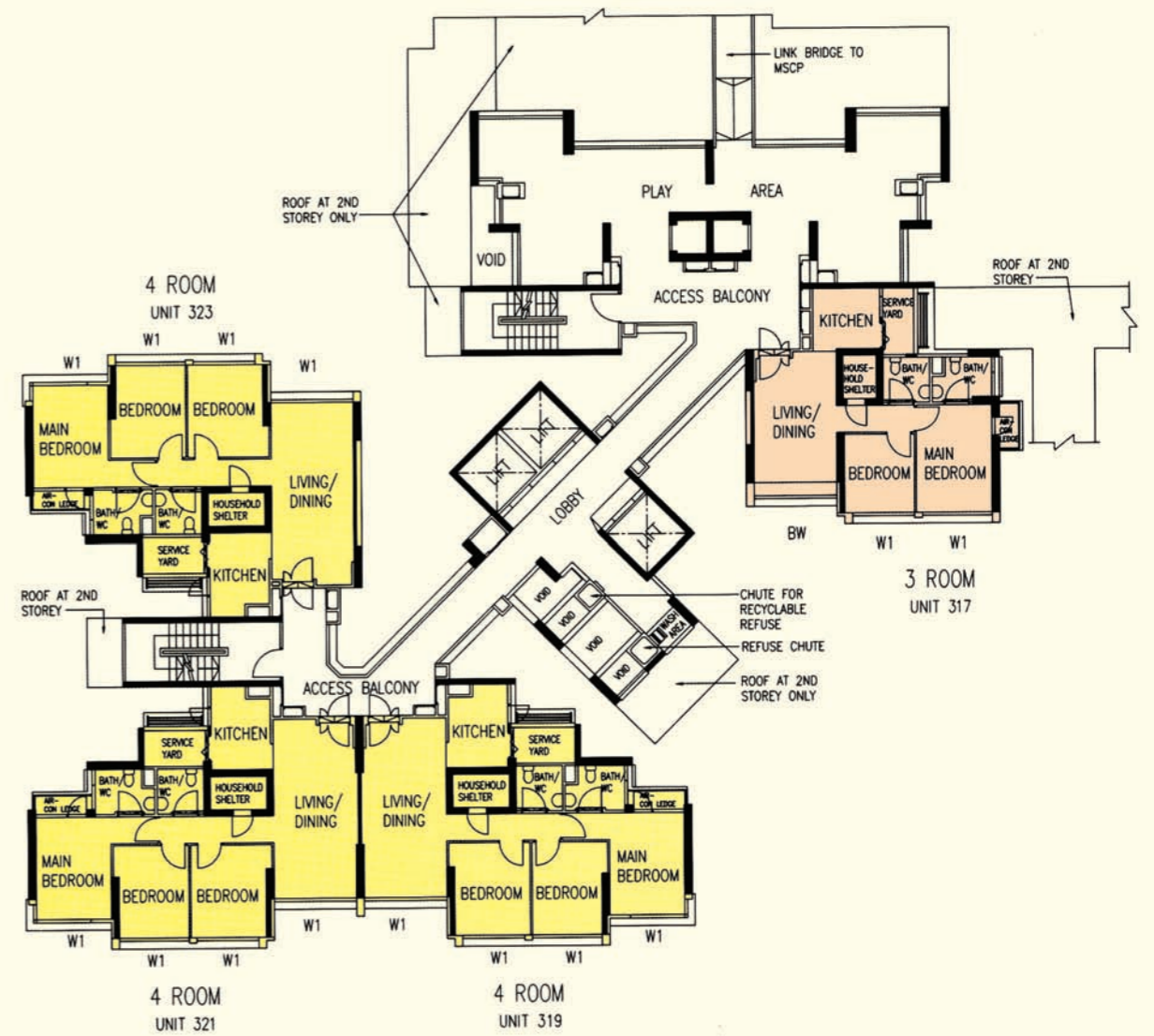
- Bedroom : Decorative Semi-Solid Timber Doors (Type D9)
- Bathrooms/WC : Laminated Semi-Solid Timber Doors (Type D9a)
- Ceramic Tiles to Bathrooms/WC/ Kitchen Floor
- Ceramic Tiles with Tile Skirting to Service Yard Floor
- Ceramic Tiles to Household Shelter Floor
- Concealed Electrical Wiring & Water Supply Pipes

**LEGEND:**

- 2 Room
- 3 Room
- 4 Room

SCALE 0 2 4 6 8 10 METRES

The coloured floor plan is not intended to demarcate the boundary of the flat.



**Window Legend:**  
 W1 - Three Quarter Height Window (approx. 700mm high parapet wall)  
 BW - Bay Window (approx. 600mm high parapet wall)

Unless otherwise indicated all windows will be standard height windows.



### 2ND STOREY FLOOR PLAN BLOCK 441B

**Additional Features:**

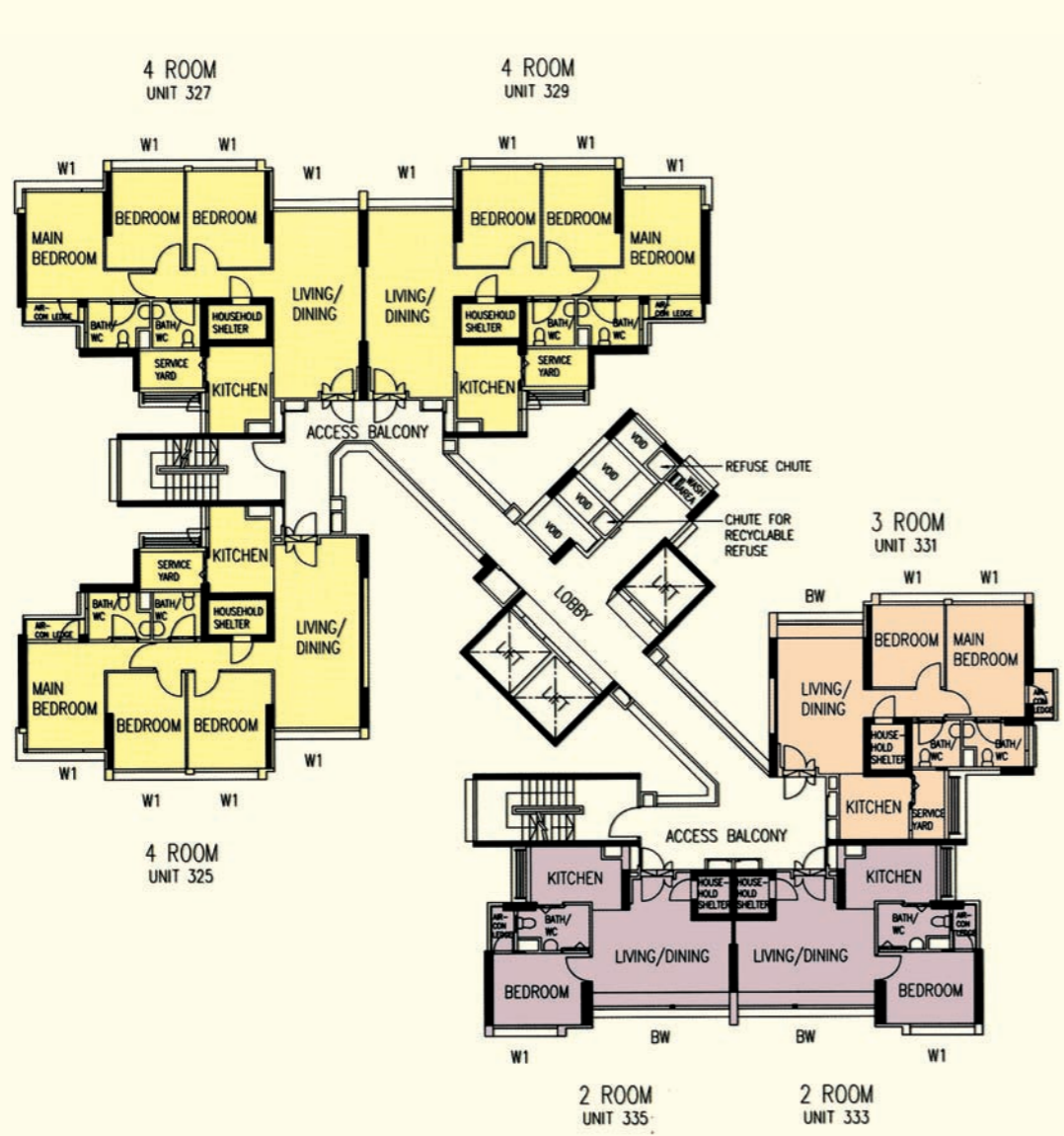
- Bedroom : Decorative Semi-Solid Timber Doors (Type D9)
- Bathrooms/WC : Laminated Semi-Solid Timber Doors (Type D9a)
- Ceramic Tiles to Bathrooms/WC/ Kitchen Floor
- Ceramic Tiles with Tile Skirting to Service Yard Floor
- Ceramic Tiles to Household Shelter Floor
- Concealed Electrical Wiring & Water Supply Pipes

**LEGEND:**

- 2 Room
- 3 Room
- 4 Room

SCALE 0 2 4 6 8 10 METRES

The coloured floor plan is not intended to demarcate the boundary of the flat.



**Window Legend:**  
 W1 - Three Quarter Height Window (approx. 700mm high parapet wall)  
 BW - Bay Window (approx. 600mm high parapet wall)

Unless otherwise indicated all windows will be standard height windows.



**5TH TO 20TH STOREY FLOOR PLAN  
 BLOCK 441C**

**Additional Features:**

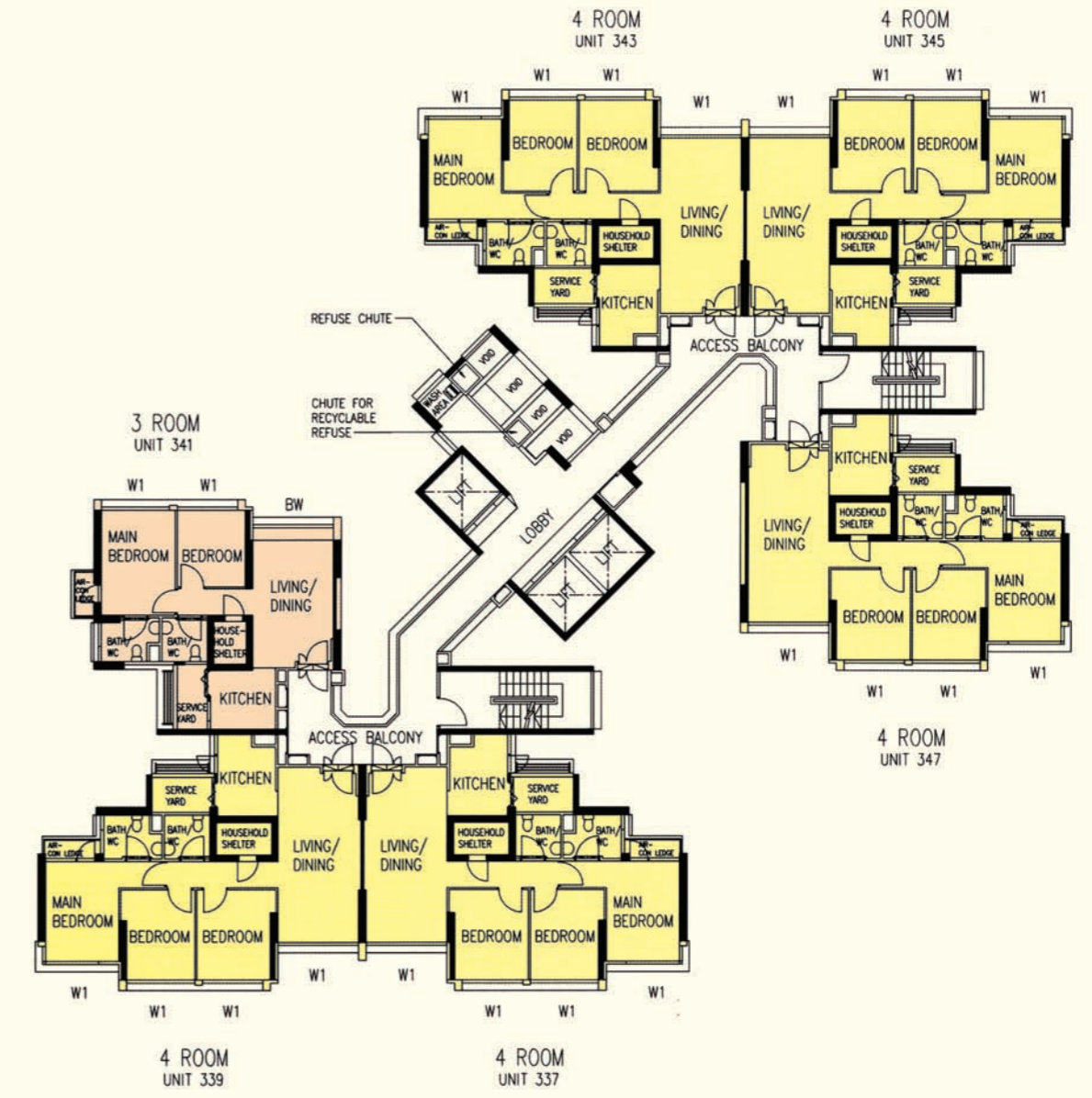
- Bedroom : Decorative Semi-Solid Timber Doors (Type D9)
- Bathrooms/WC : Laminated Semi-Solid Timber Doors (Type D9a)
- Ceramic Tiles to Bathrooms/WC/ Kitchen Floor
- Ceramic Tiles with Tile Skirting to Service Yard Floor
- Ceramic Tiles to Household Shelter Floor
- Concealed Electrical Wiring & Water Supply Pipes

**LEGEND:**

- 2 Room
- 3 Room
- 4 Room

SCALE 0 2 4 6 8 10 METRES

The coloured floor plan is not intended to demarcate the boundary of the flat.



**Window Legend:**  
 W1 - Three Quarter Height Window (approx. 700mm high parapet wall)  
 BW - Bay Window (approx. 600mm high parapet wall)

Unless otherwise indicated all windows will be standard height windows.



**5TH TO 17TH STOREY FLOOR PLAN  
 BLOCK 441D**

**Additional Features:**

- Bedroom : Decorative Semi-Solid Timber Doors (Type D9)
- Bathrooms/WC : Laminated Semi-Solid Timber Doors (Type D9a)
- Ceramic Tiles to Bathrooms/WC/ Kitchen Floor
- Ceramic Tiles with Tile Skirting to Service Yard Floor
- Ceramic Tiles to Household Shelter Floor
- Concealed Electrical Wiring & Water Supply Pipes

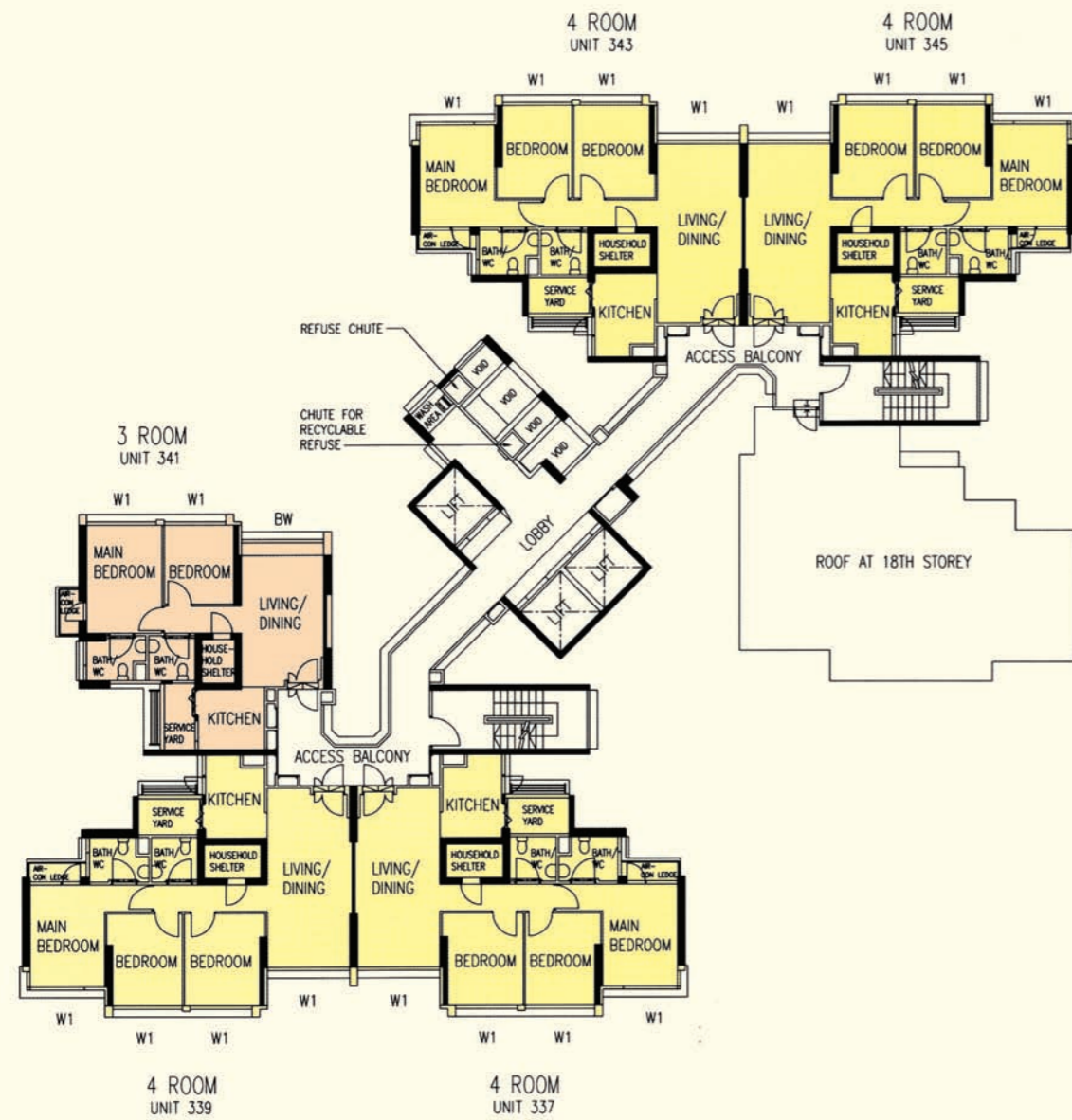
**LEGEND:**

- 2 Room
- 3 Room
- 4 Room

SCALE 0 2 4 6 8 10 METRES

The coloured floor plan is not intended to demarcate the boundary of the flat.





**Window Legend:**  
 W1 - Three Quarter Height Window (approx. 700mm high parapet wall)  
 BW - Bay Window (approx. 600mm high parapet wall)  
 Unless otherwise indicated all windows will be standard height windows.



**18TH STOREY FLOOR PLAN  
 BLOCK 441D**

- Additional Features:**
- Bedroom : Decorative Semi-Solid Timber Doors (Type D9)
  - Bathrooms/WC : Laminated Semi-Solid Timber Doors (Type D9a)
  - Ceramic Tiles to Bathrooms/WC/ Kitchen Floor
  - Ceramic Tiles with Tile Skirting to Service Yard Floor
  - Ceramic Tiles to Household Shelter Floor
  - Concealed Electrical Wiring & Water Supply Pipes

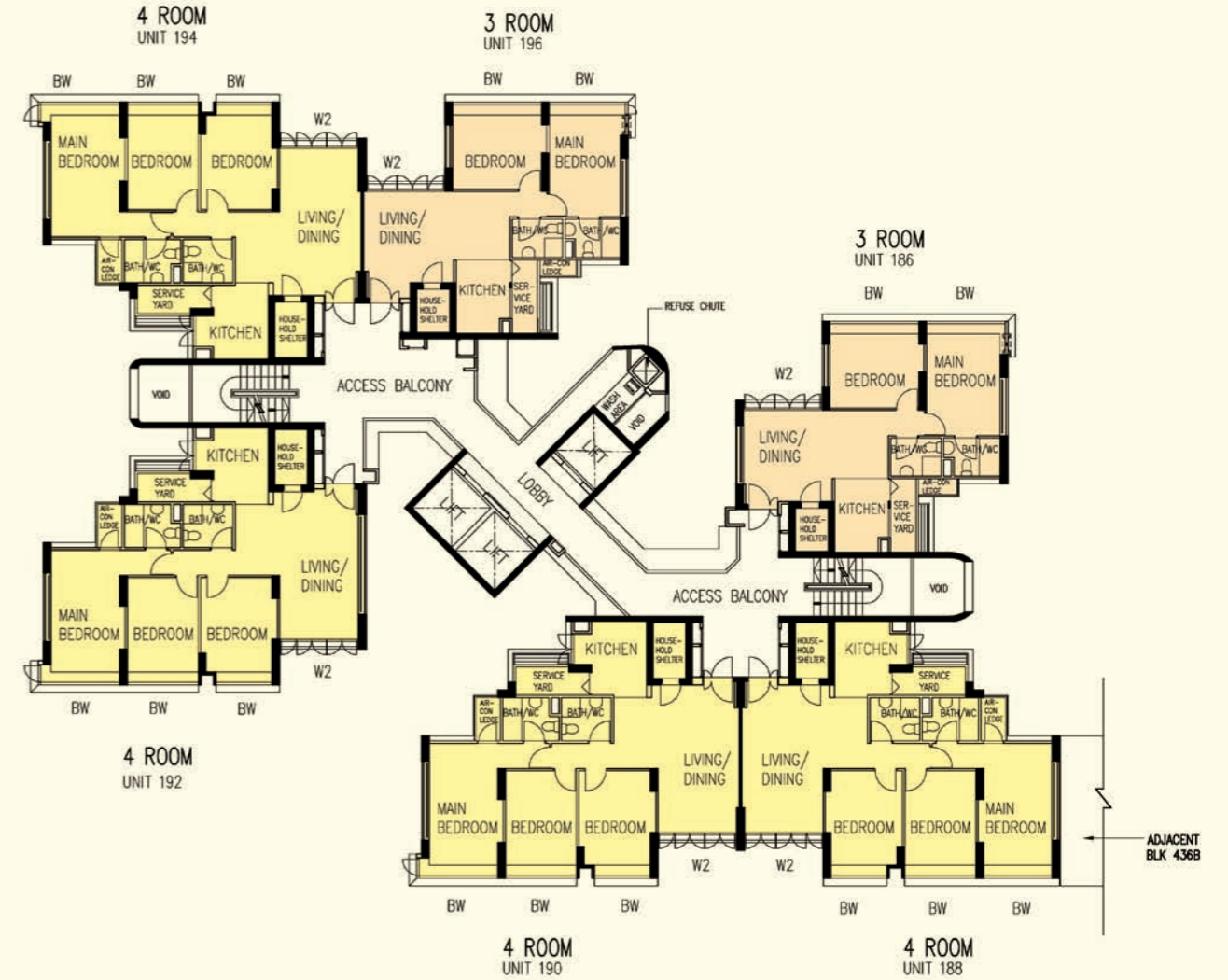
**LEGEND:**

- 2 Room
- 3 Room
- 4 Room

**SCALE** 0 2 4 6 8 10 METRES

The coloured floor plan is not intended to demarcate the boundary of the flat.

**Fernvale Grove  
 Sengkang N4 C14  
 Standard Flats**



**Window Legend:**  
 W2 - Three Quarter Height Window  
 BW - Bay Window  
 Unless otherwise indicated all windows will be standard height windows.



**7TH TO 23RD STOREY FLOOR PLAN  
 BLOCK 436A**

- Additional Features:**
- Bedrooms : Semi-solid Timber Doors (Type D7)
  - Bathrooms/WC : Laminated Semi-Solid Timber Doors (Type D7a)
  - Ceramic Tiles to Bathrooms/WC/Kitchen Floors
  - Ceramic Tiles with Tile Skirting to Service Yard Floor
  - Concealed Electrical Wiring & Water Supply Pipes

**LEGEND:**

- 3 Room
- 4 Room

**SCALE** 0 2 4 6 8 10 METRES

The coloured floor plan is not intended to demarcate the boundary of the flat.

# Fernvale Court



## Sengkang N4 C15 Standard Flats



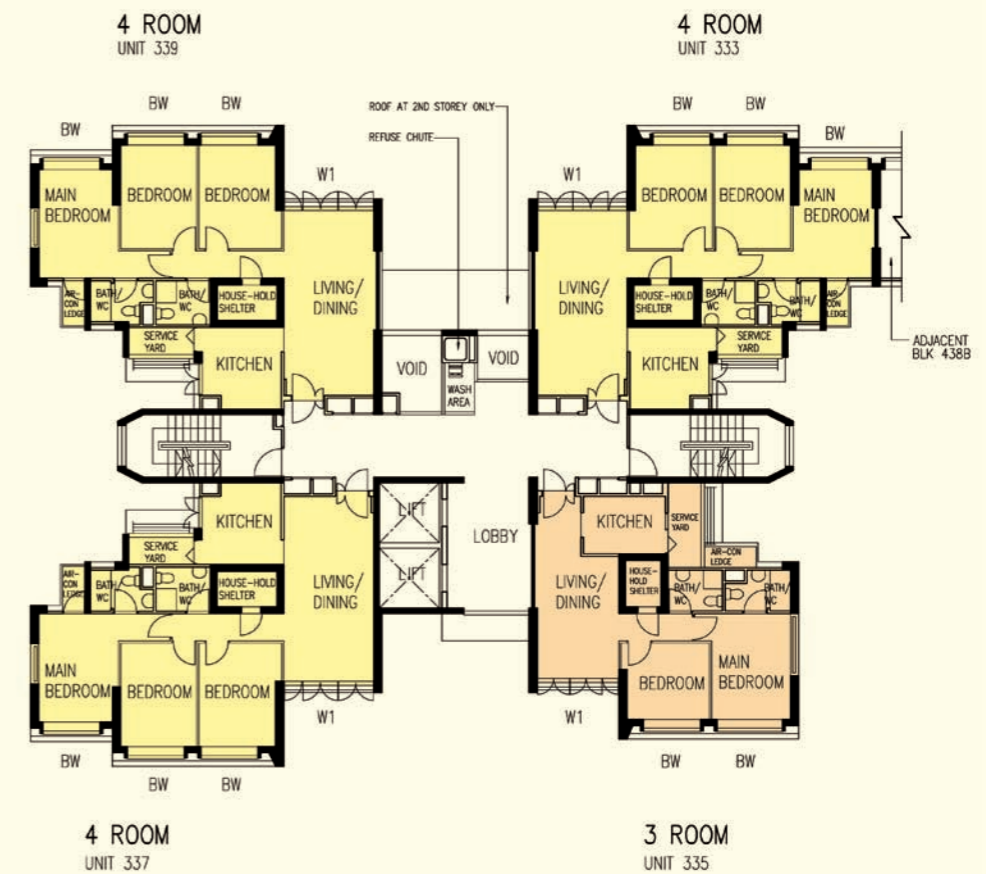
### LEGEND:

- 3 - Room
- 4 - Room
- Surrounding Buildings
- Single Storey / Precinct Pavilion / Linkway / Shelter / Drop-Off Porch / Pergola
- Reserved for / Existing Development
- Children Playground (PG) / Fitness Corner (FC)
- Childcare Centre at 1st Storey
- Future Community Centre at 1st Storey
- Electrical Substation (ESS) at 1st Storey
- Multi-Storey Carpark
- Drainage Reserve
- Open Space
- Staircase
- Centralised Refuse Chute (CRC)
- Lift

The information contained herein is subject to change at any time without notice and cannot form part of an offer or contract. The proposed facilities and their locations as shown are only estimates. The proposed facilities may include other ancillary uses allowed under URA's prevailing Development Control guidelines. For example, places of worship may also include columbarium as an ancillary use, while community centres may also include childcare centres. The implementation of the facilities is subject to review by the Government or competent authorities. While reasonable care has been taken in providing this information, HDB shall not be responsible in any way for any damage or loss suffered by any person whether directly or indirectly as a result of reliance on the said information or as a result of any error or omission therein.



Artist's Impression



### Window Legend:

- W1 - Three Quarter Height Window
- BW - Bay Window (approx. 700mm high parapet)

Unless otherwise indicated all windows will be standard height windows.



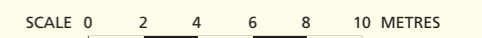
## 2ND TO 21ST STOREY FLOOR PLAN BLOCK 438A

### Additional Features:

- Bedrooms : Decorative Semi-solid Timber Doors (Type D7)
- Bathrooms/WC : Laminated Semi-Solid Timber Doors (Type D7a)
- Glazed Ceramic Tiles to Bathrooms/WC/Kitchen Floors
- Glazed Ceramic Tiles with Tile Skirting to Service Yard Floor
- Glazed Ceramic Tiles to Household Shelter Floor
- Concealed Electrical Wiring & Water Supply Pipes

### LEGEND:

- 3 Room
- 4 Room



The coloured floor plan is not intended to demarcate the boundary of the flat.



**Window Legend:**  
 W1 - Three Quarter Height Window  
 BW - Bay Window (approx. 700mm high parapet)

Unless otherwise indicated all windows will be standard height windows.



**2ND TO 21ST STOREY FLOOR PLAN  
 BLOCK 439B**

**Additional Features:**

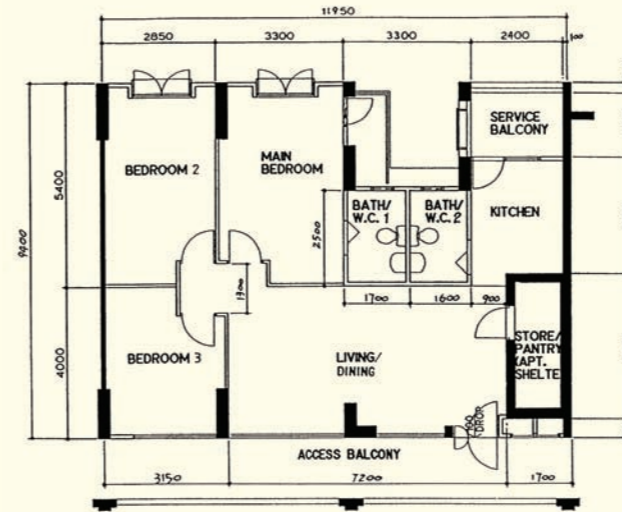
- Bedrooms : Decorative Semi-solid Timber Doors (Type D7)
- Bathrooms/WC : Laminated Semi-Solid Timber Doors (Type D7a)
- Glazed Ceramic Tiles to Bathrooms/WC/Kitchen Floors
- Glazed Ceramic Tiles with Tile Skirting to Service Yard Floor
- Glazed Ceramic Tiles to Household Shelter Floor
- Concealed Electrical Wiring & Water Supply Pipes

**LEGEND:**

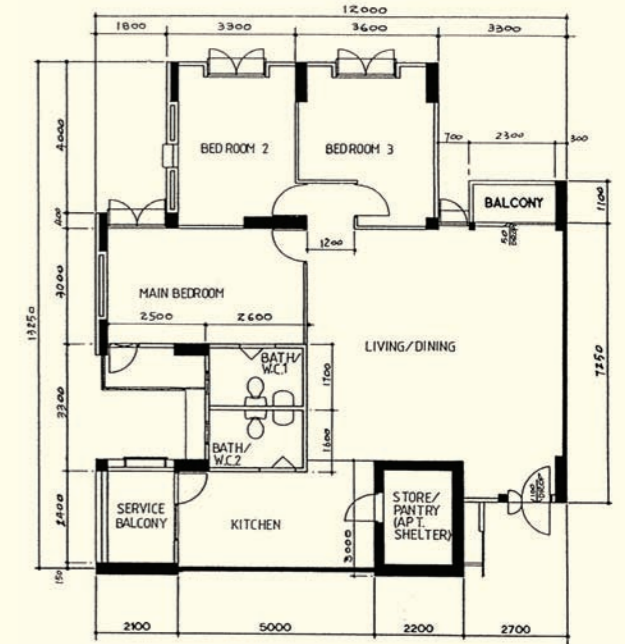
- 3 Room
- 4 Room

SCALE 0 2 4 6 8 10 METRES

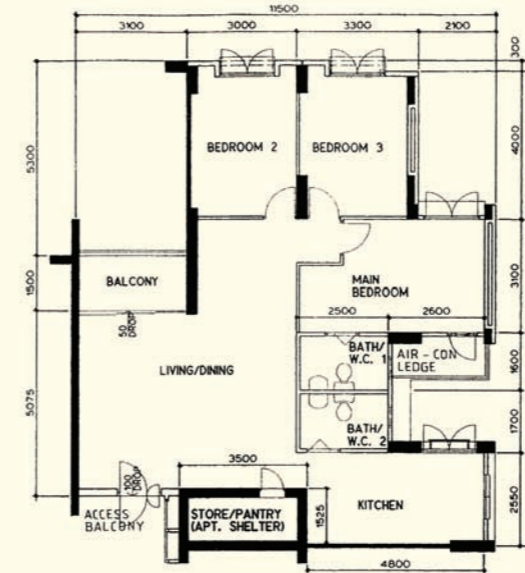
The coloured floor plan is not intended to demarcate the boundary of the flat.



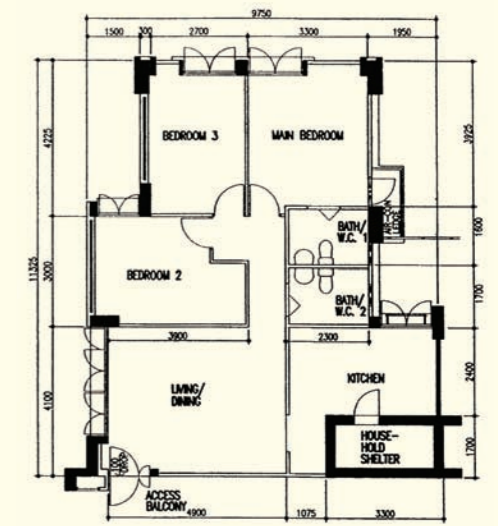
**4 - Room**  
 SK N1 C7  
 Block 125, #03-904\*\*



**5 - Room**  
 SK N1 C7  
 Block 141, #02-786\*\*

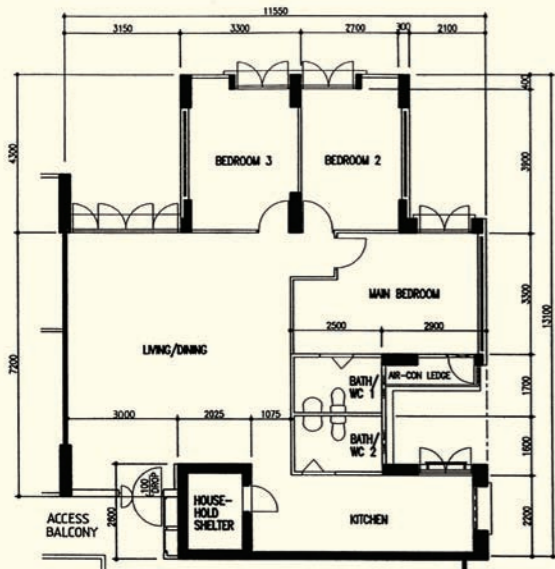


**5 - Room**  
 Rivervale Bank  
 SK N1 C11  
 Block 121C, #04-55

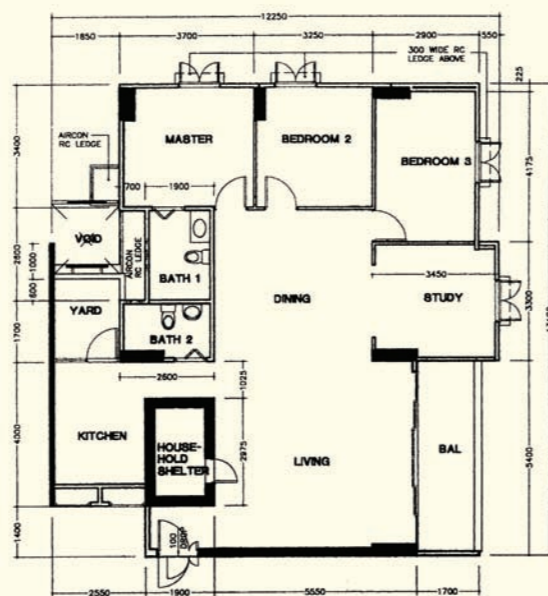


**4 - Room**  
 SK N1 C21  
 Block 183D, #11-227\*\*

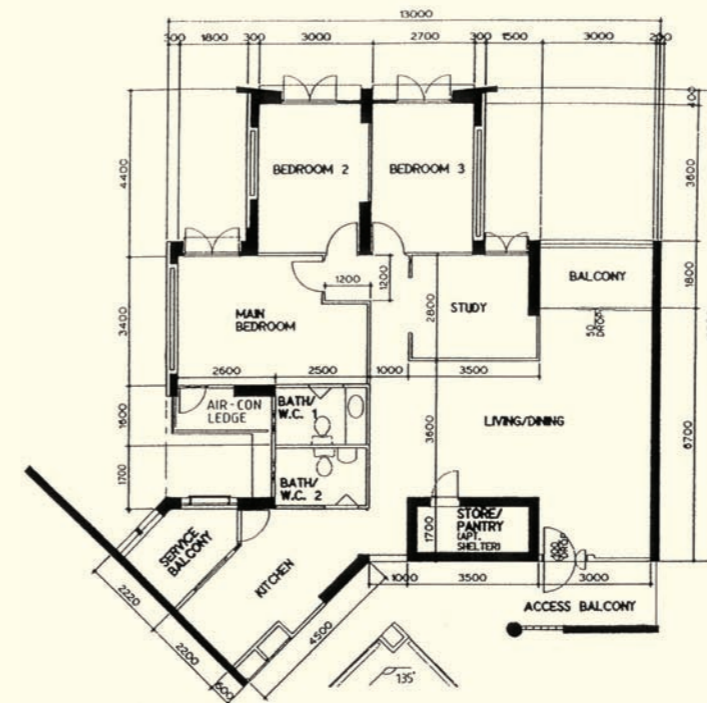
\*\*This is a Repurchased Flat  
 Photographs and the revised floor plan (if any) can be viewed at [www.hdb.gov.sg/esales](http://www.hdb.gov.sg/esales)



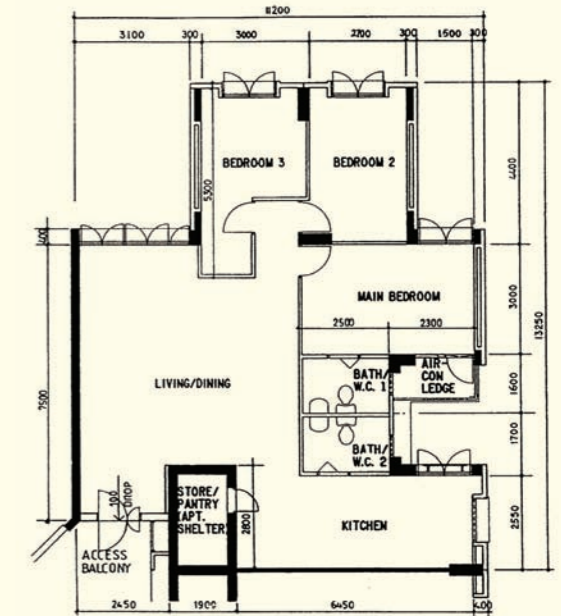
**5 - Room**  
SK N1 C22  
Block 183B, #14-255\*\*



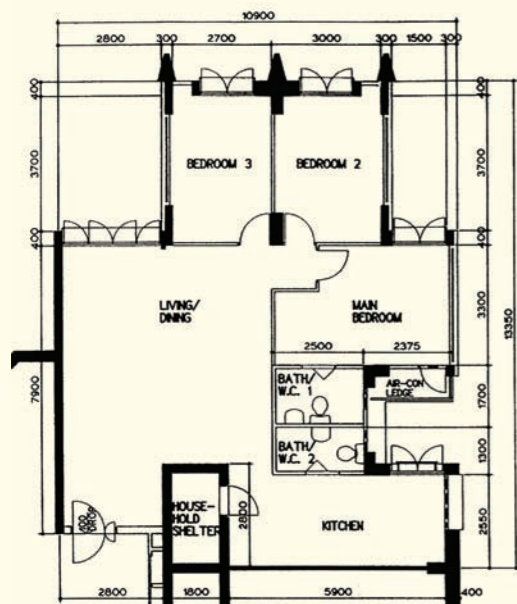
**Premium Flat Executive**  
SK N2 C19  
Compassvale Green  
Block 299C, #14-114\*\*



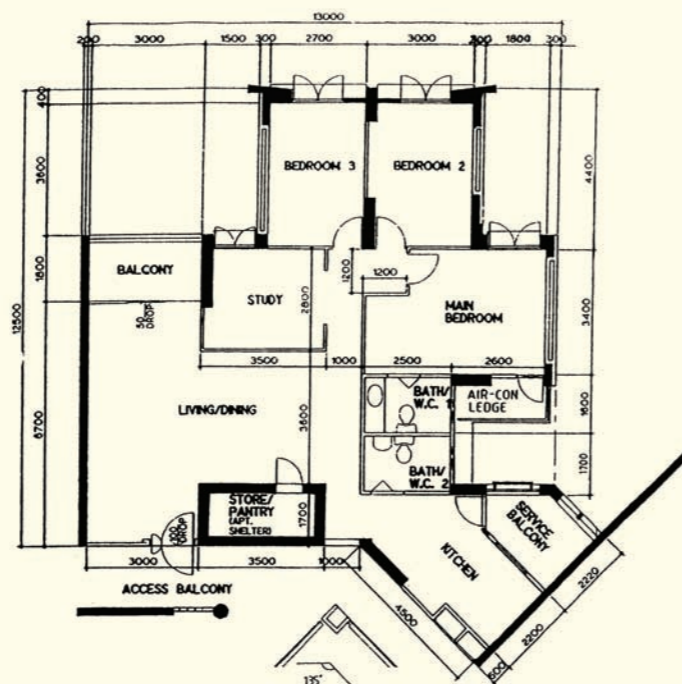
**Executive Apartment**  
SK N2 C26  
Block 204D, #06-407\*\*



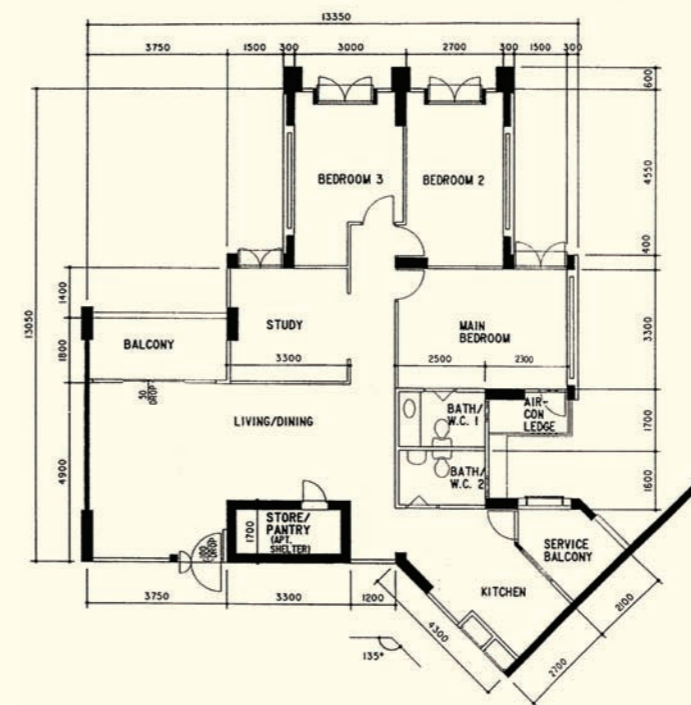
**5 - Room**  
SK N3 C1  
Anchorvale Court  
Block 301D, #11-15\*\*



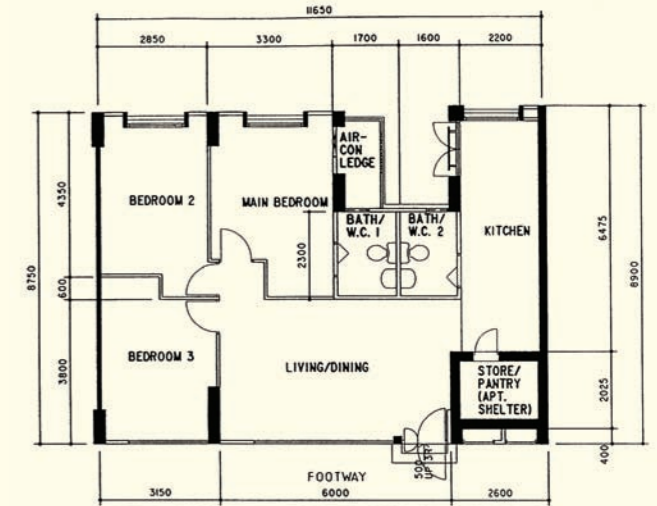
**5 - Room**  
SK N2 C21  
Block 292A, #02-224\*\*



**Executive Apartment**  
SK N2 C26  
Block 203D, #11-53\*\*



**Executive Apartment**  
SK N3 C3  
Anchorvale Court  
Block 302D, #02-24



**4 - Room**  
SK N3 C3  
Anchorvale Court  
Block 304B, #01-12\*\*

\*\*This is a Repurchased Flat  
Photographs and the revised floor plan (if any) can be viewed at [www.hdb.gov.sg/esales](http://www.hdb.gov.sg/esales)

\*\*This is a Repurchased Flat  
Photographs and the revised floor plan (if any) can be viewed at [www.hdb.gov.sg/esales](http://www.hdb.gov.sg/esales)

