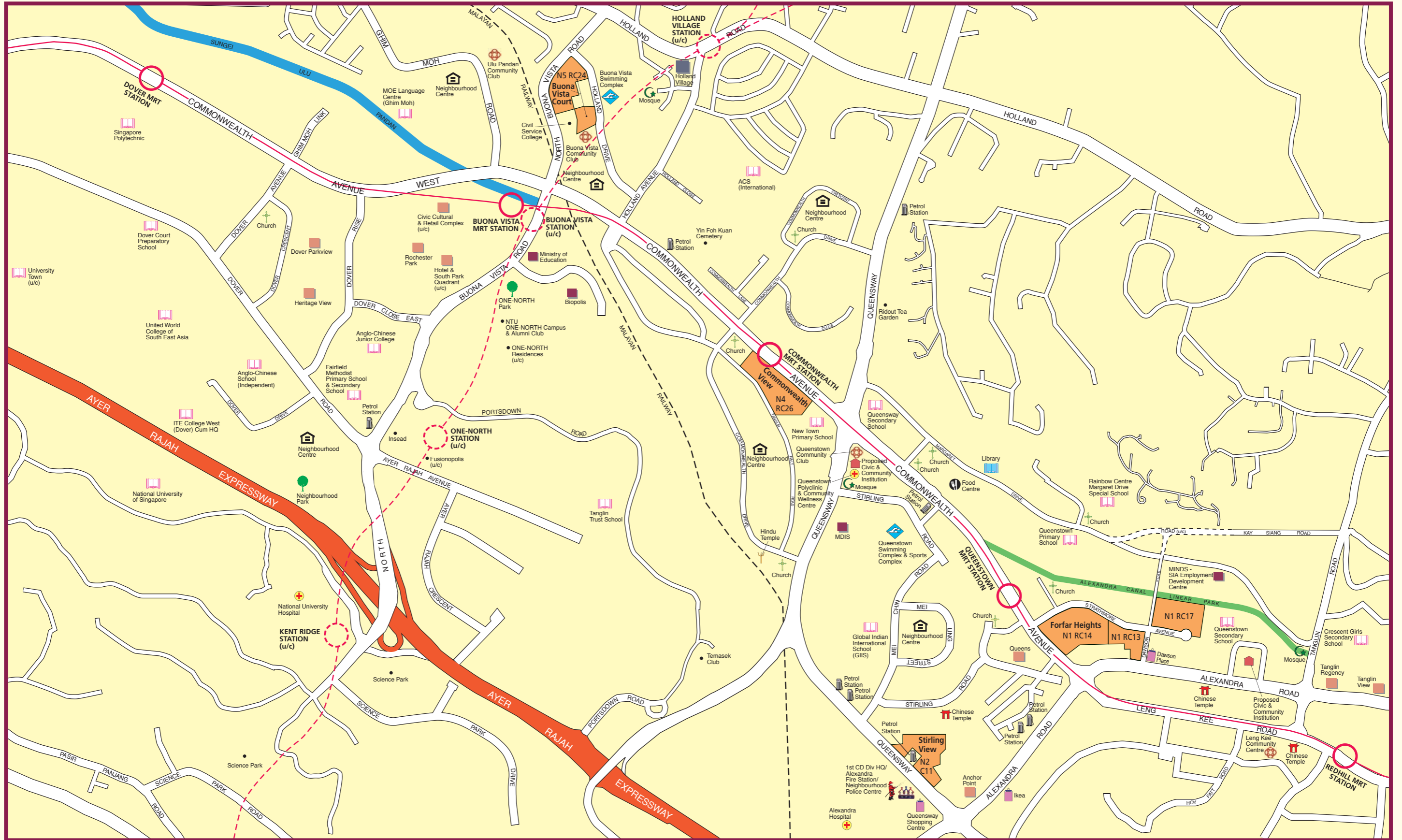


QUEENSTOWN Town Map

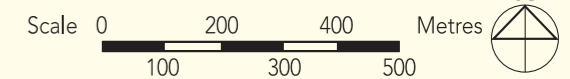


LEGEND:

- Contracts with Standard Flats
- MRT Line & Station (u/c)
- MRT Line & Station
- (u/c) Under Construction

Notes:

All proposed developments are subject to change and planning approval.
Proposed Civic & Community Institution includes examples like Association, Home for the Aged, etc., subject to change and planning approval.



The information contained herein is subject to change at any time without notice and cannot form part of an offer or contract. The proposed facilities and their locations as shown are only estimates. The proposed facilities may include other ancillary uses allowed under URAs prevailing Development Control guidelines. For example, places of worship may also include columbarium as an ancillary use, while community centres may also include childcare centres. The implementation of the facilities is subject to review by the Government or competent authorities. While reasonable care has been taken in providing this information, HDB shall not be responsible in any way for any damage or loss suffered by any person whether directly or indirectly as a result of reliance on the said information or as a result of any error or omission therein.

Forfar Heights

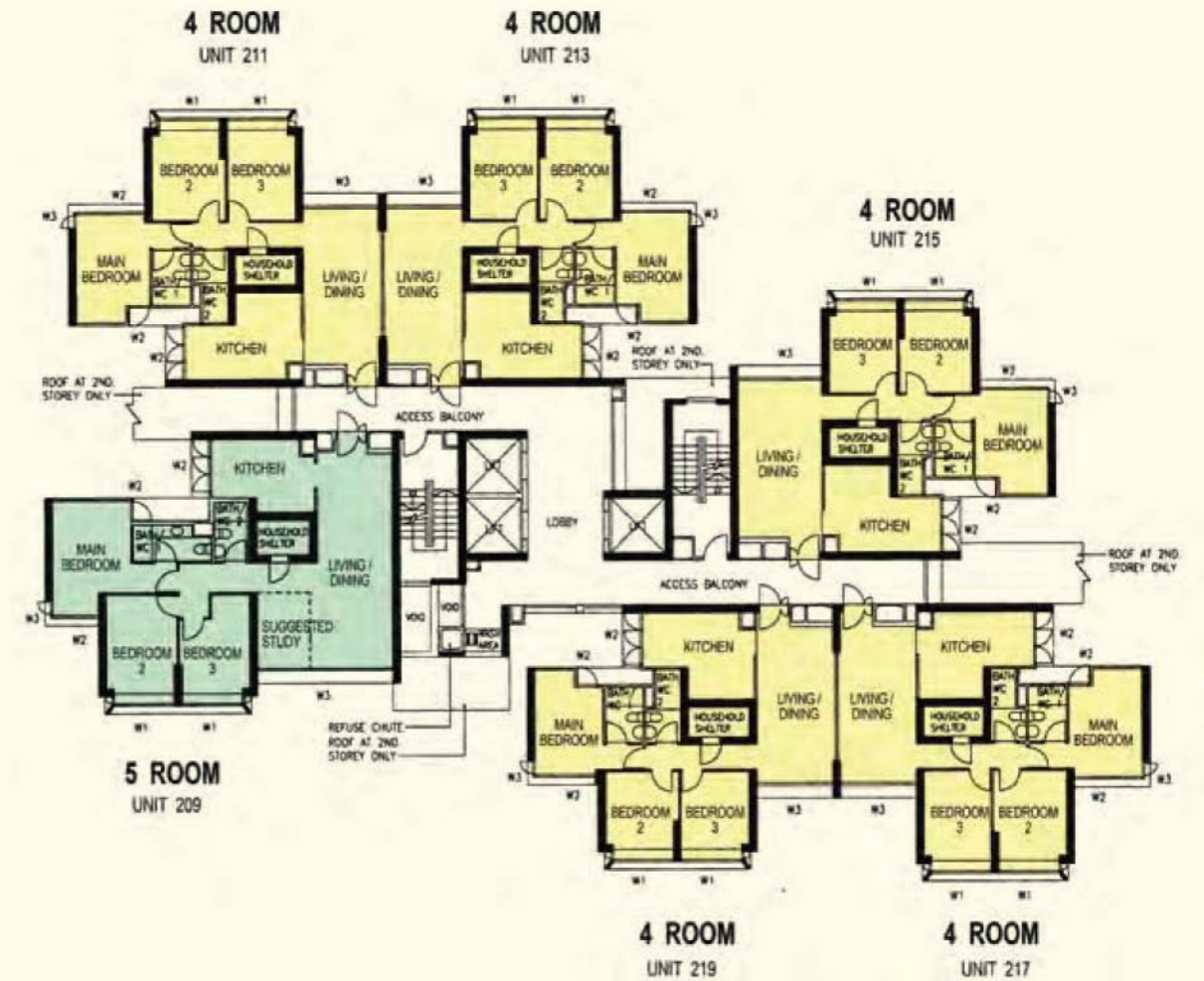


Queenstown N1 RC14
Standard Flats

LEGEND:

- Residential Units
- Surrounding Buildings
- Single Storey/Precinct Pavilion/Linkway/Gazebo
- Reserved for/Existing Development
- Playground (PG)/Hardcourt (HC)
- Residents' Committee Centre at 1st Storey
- Education Centre Facilities at 1st Storey of MSCP
- Electrical Substation (ESS)
- Carparking
- Open Space
- Staircase
- Refuse Chute
- Lift

The information contained herein is subject to change at any time without notice and cannot form part of an offer or contract. The proposed facilities and their locations as shown are only estimates. The proposed facilities may include other ancillary uses allowed under URA's prevailing Development Control guidelines. For example, places of worship may also include columbarium as an ancillary use, while community centres may also include childcare centres. The implementation of the facilities is subject to review by the Government or competent authorities. While reasonable care has been taken in providing this information, HDB shall not be responsible in any way for any damage or loss suffered by any person whether directly or indirectly as a result of reliance on the said information or as a result of any error or omission therein.



Window Legend:

- W1 - Bay Window at 1m Height
- W2 - Standard Window at 1m Height
- W3 - Full Height Window

Unless otherwise indicated all windows will be standard height windows.

2ND TO 4TH, 7TH TO 10TH, 13TH TO 16TH, 21ST TO 24TH, 27TH TO 30TH STOREY FLOOR PLAN BLOCK 49

LEGEND:

- 4 Room
- 5 Room

SCALE 0 2 4 6 8 10 METRES

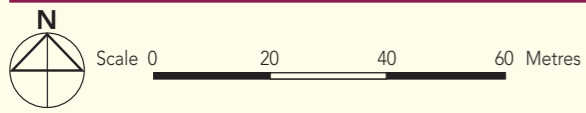
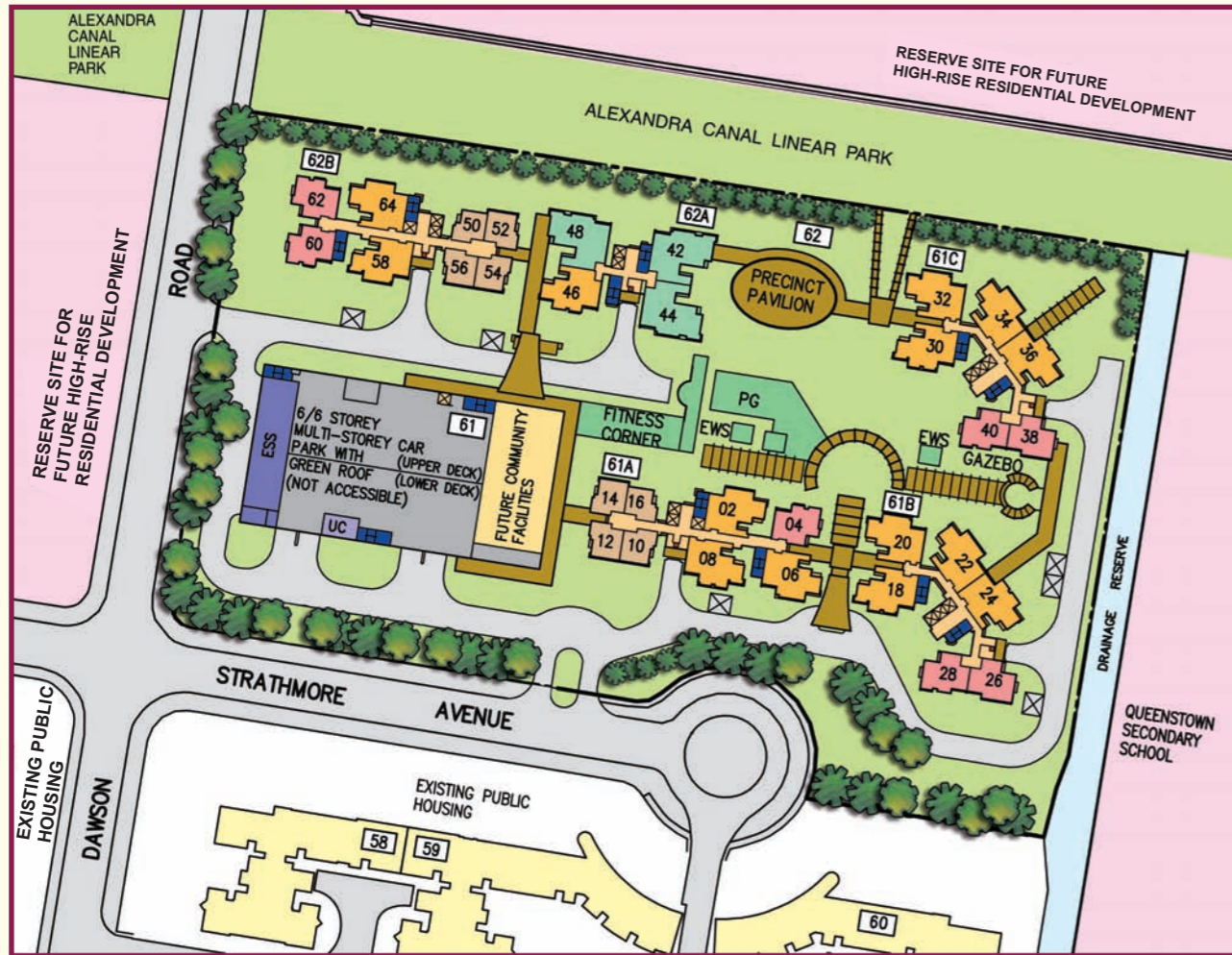
Additional Features:

- Bedroom/Bathroom/WC : Decorative Timber Door (Type D2)
- Concealed Electrical Wiring & Water Supply Pipes
- Prefabricated Toilets/Bathrooms Finished with Dry-Wall Partition will be provided



Queenstown N1 RC17

Standard Flats

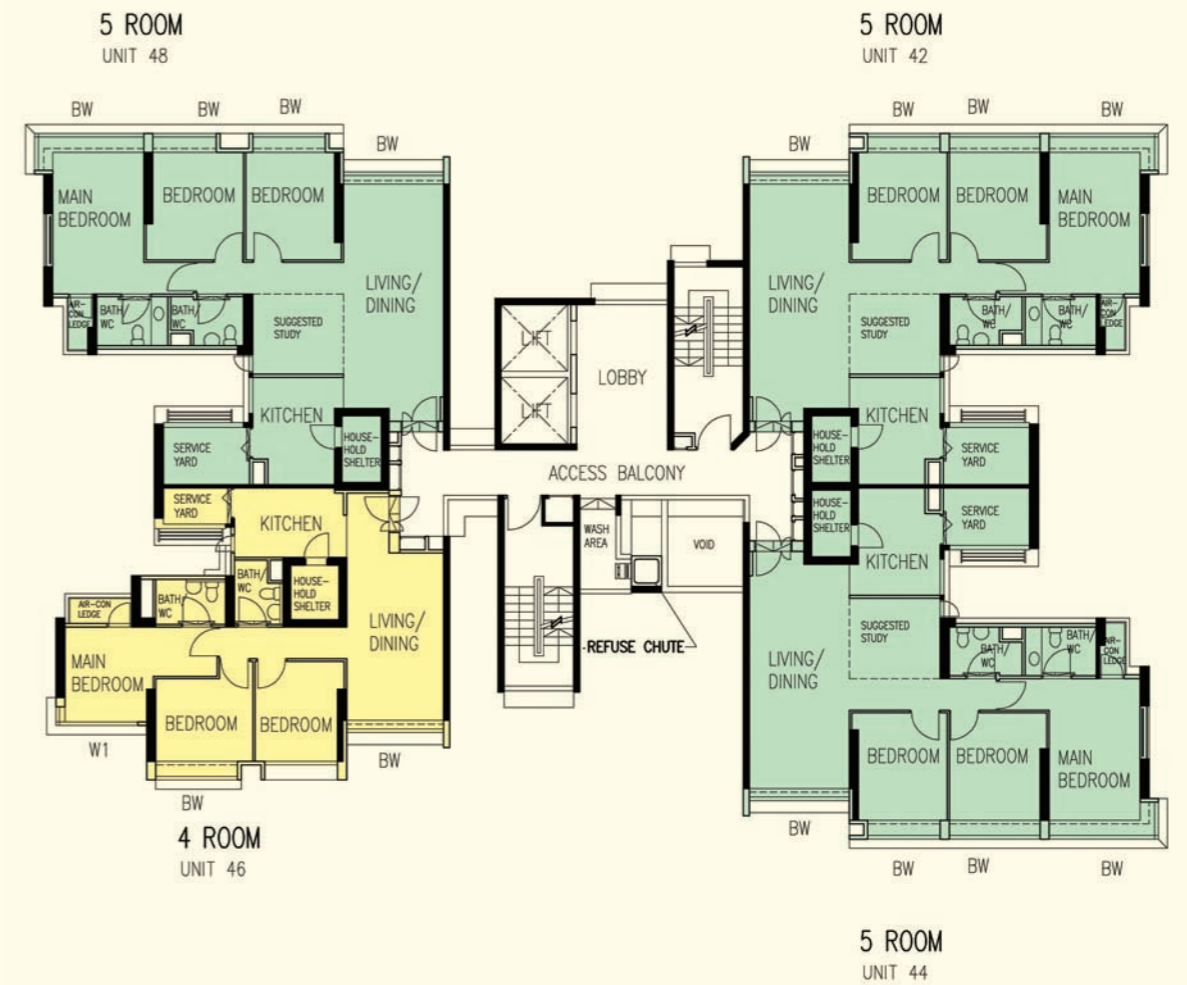


- LEGEND:**
- Studio Apartment
 - 3 Room
 - 4 Room
 - 5 Room
 - Surrounding Buildings
 - Single Storey/Precinct Pavilion/Linkway/Shelter/ Drop-Off Porch/Pergola/Trellis/Gazebo
 - Reserved for/Existing Development
 - Children Playground (PG)/Fitness Corner/ Elderly Wellness Station (EWS)
 - Future Community Facilities at 1st Storey
 - Electrical Substation (ESS) at 1st Storey
 - Utility Centre (UC) at 1st Storey
 - Drainage Reserve
 - Carparking
 - Open Space
 - Staircase
 - Service Bay
 - Centralised Refuse Chute (CRC)
 - Lift

Artist's Impression

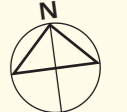


The information contained herein is subject to change at any time without notice and cannot form part of an offer or contract. The proposed facilities and their locations as shown are only estimates. The proposed facilities may include other ancillary uses allowed under URA's prevailing Development Control guidelines. For example, places of worship may also include columbarium as an ancillary use, while community centres may also include childcare centres. The implementation of the facilities is subject to review by the Government or competent authorities. While reasonable care has been taken in providing this information, HDB shall not be responsible in any way for any damage or loss suffered by any person whether directly or indirectly as a result of reliance on the said information or as a result of any error or omission therein.



Window Legend:
 W1 - Three Quarter Height Window (approx. 600mm high parapet wall)
 BW - Bay Window (approx. 550mm high parapet wall)

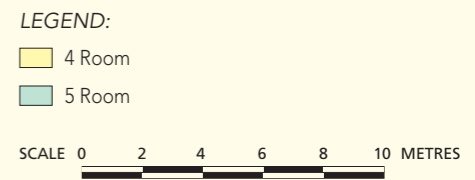
Unless otherwise indicated all windows will be standard height windows.



19TH & 25TH STOREY FLOOR PLAN BLOCK 62A

The coloured floor plan is not intended to demarcate the boundary of the flat.

- Additional Features:**
- Bedroom : Decorative Semi-Solid Timber Door (Type D9)
 - Bathroom/WC : Laminated Semi-Solid Timber Door (Type D9a)
 - Kitchen /Bathroom/WC Floor : Ceramic Tiles
 - Service Yard Floor : Ceramic Tiles with Tiles Skirting
 - Household Shelter Floor : Ceramic Tiles
 - Vanity Top Wash Basin at Bathroom/WC of Main Bedroom for 5-Room Flats
 - Concealed Electrical Wiring & Water Supply Pipes



Commonwealth View



Queenstown N4 RC26 Standard Flats

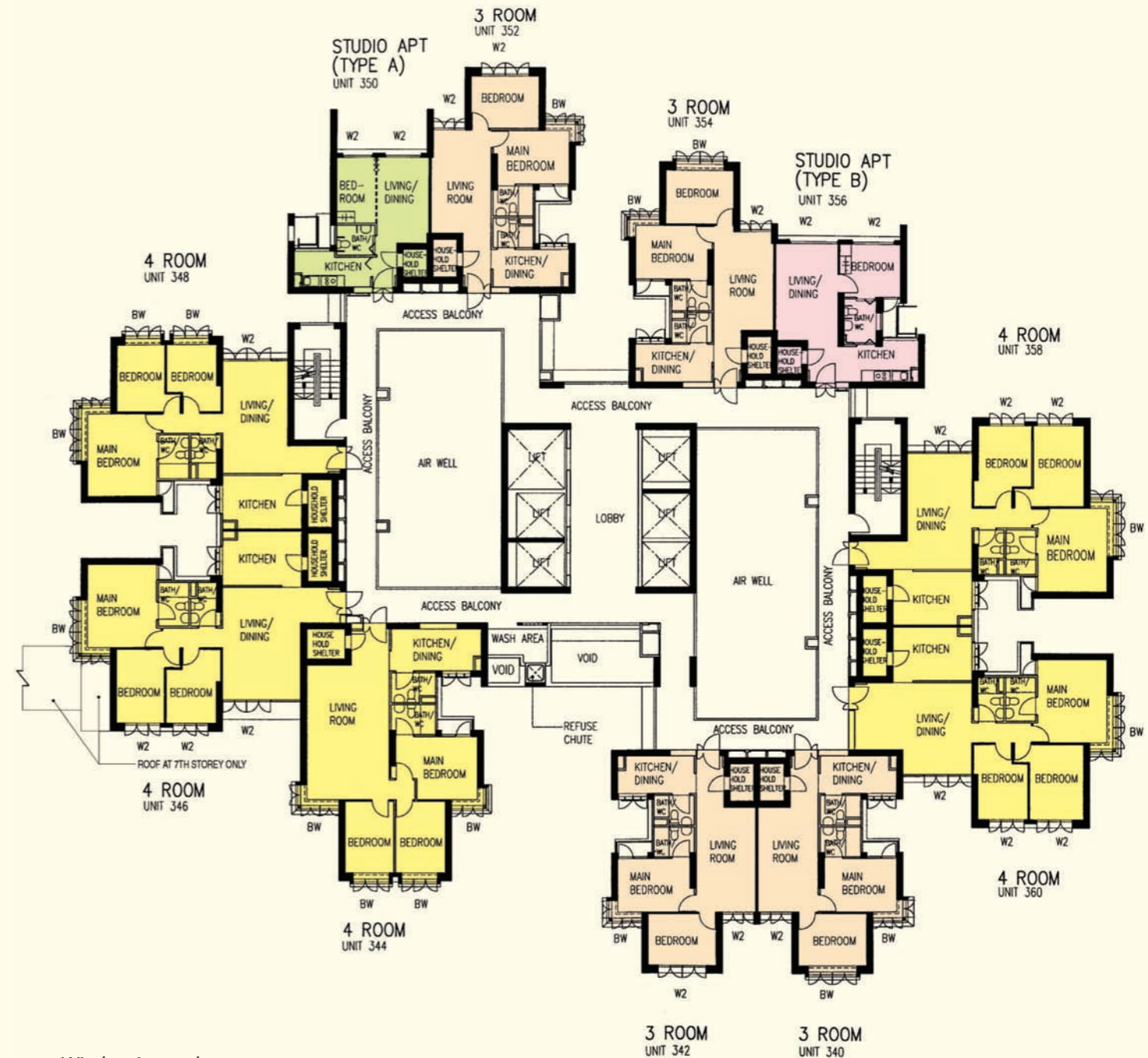
Scale 0 20 40 60 Metres



LEGEND:

- Residential Units
- Surrounding Buildings
- Single Storey / Precinct Pavilion / Linkway / Drop-Off Porch / Shelter
- Reserved for / Existing Development
- Playground / EFC-Elderly Fitness Corner
- Single Storey Neighbourhood Link
- Dustbin Centre (DC)
- Multi Storey Carpark
- Open Space
- Staircase
- Centralised Refuse Chute (CRC)
- Lift

The information contained herein is subject to change at any time without notice and cannot form part of an offer or contract. The proposed facilities and their locations as shown are only estimates. The proposed facilities may include other ancillary uses allowed under URA's prevailing Development Control guidelines. For example, places of worship may also include columbarium as an ancillary use, while community centres may also include childcare centres. The implementation of the facilities is subject to review by the Government or competent authorities. While reasonable care has been taken in providing this information, HDB shall not be responsible in any way for any damage or loss suffered by any person whether directly or indirectly as a result of reliance on the said information or as a result of any error or omission therein.



Window Legend:

- W1 - Full Height Window
- W2 - Three Quarter Height Window
- BW - Standard Height Bay Window

Unless otherwise indicated all windows will be standard height windows.

7TH, 11TH TO 13TH, 17TH TO 19TH STOREY FLOOR PLAN BLOCK 89

Additional Features:

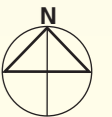
- Bedroom/Bathroom/WC : Decorative Timber Doors (D4) for 4-Room & 5-Room
- Concealed Electrical Wiring & Water Supply Pipes

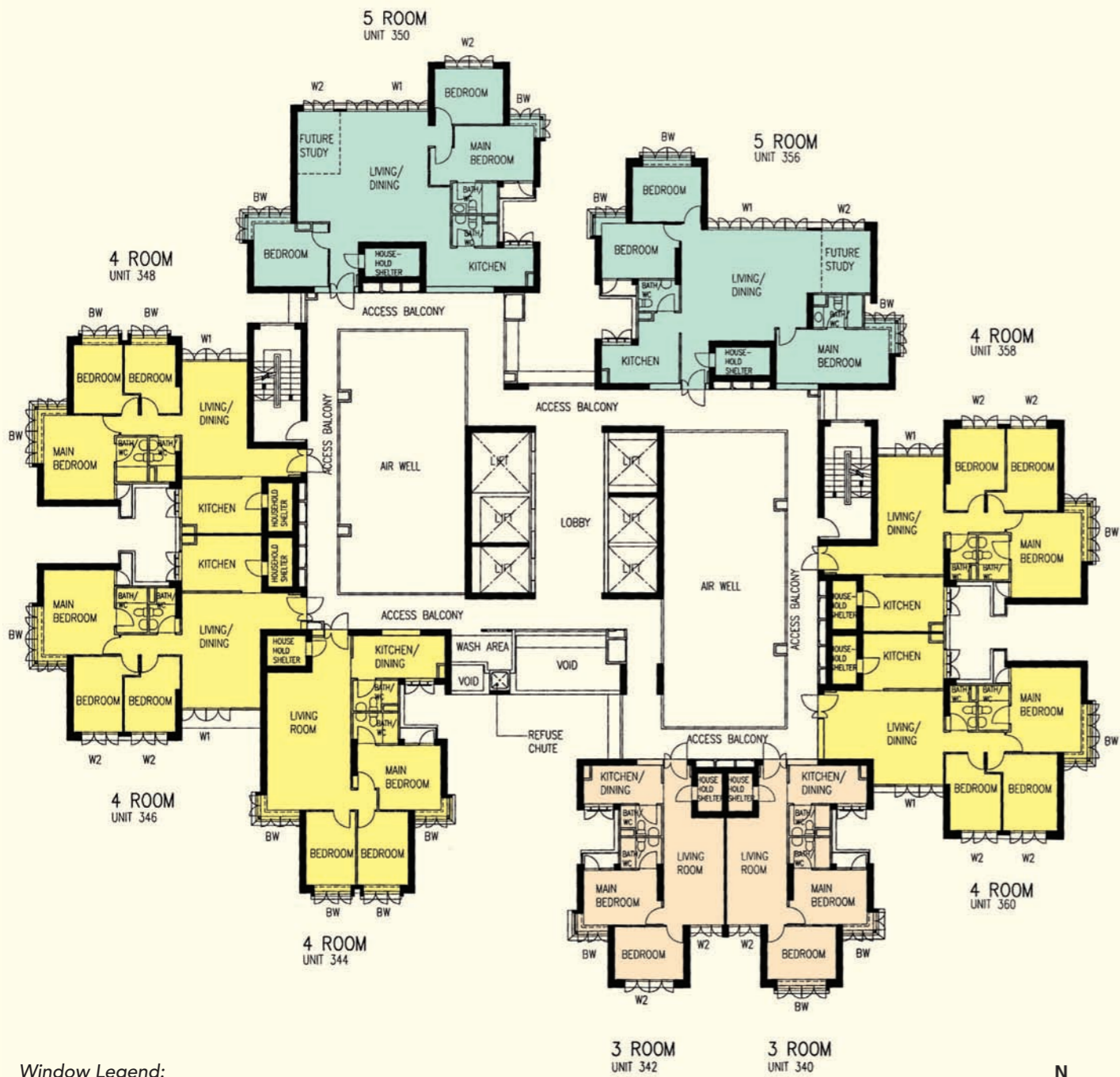
The coloured floor plan is not intended to demarcate the boundary of the flat.

LEGEND:

- Studio Apartment (Type A)
- Studio Apartment (Type B)
- 3 Room
- 4 Room

SCALE 0 2 4 6 8 10 METRES





Window Legend:
 W1 - Full Height Window
 W2 - Three Quarter Height Window
 BW - Standard Height Bay Window

Unless otherwise indicated all windows will be standard height windows.



**23RD TO 25TH, 29TH TO 31ST, 35TH TO 37TH
 STOREY FLOOR PLAN
 BLOCK 89**

- Additional Features:**
- Bedroom/Bathroom/WC : Decorative Timber Doors (D4) for 4-Room & 5-Room
 - Concealed Electrical Wiring & Water Supply Pipes

LEGEND:

- 3 Room
- 4 Room
- 5 Room

SCALE 0 2 4 6 8 10 METRES



Window Legend:
 W1 - Full Height Window
 W2 - Three Quarter Height Window
 BW - Standard Height Bay Window

Unless otherwise indicated all windows will be standard height windows.



**21ST TO 22ND, 26TH TO 28TH, 32ND TO 34TH,
 38TH TO 40TH STOREY FLOOR PLAN
 BLOCK 90**

- Additional Features:**
- Bedroom/Bathroom/WC : Decorative Timber Doors (D4) for 4-Room & 5-Room
 - Concealed Electrical Wiring & Water Supply Pipes

LEGEND:

- 3 Room
- 4 Room
- 5 Room

SCALE 0 2 4 6 8 10 METRES

The coloured floor plan is not intended to demarcate the boundary of the flat.



Window Legend:
 W1 - Full Height Window
 W2 - Three Quarter Height Window
 BW - Standard Height Bay Window

Unless otherwise indicated all windows will be standard height windows.



23RD TO 25TH, 29TH TO 31ST, 35TH TO 37TH STOREY FLOOR PLAN BLOCK 90

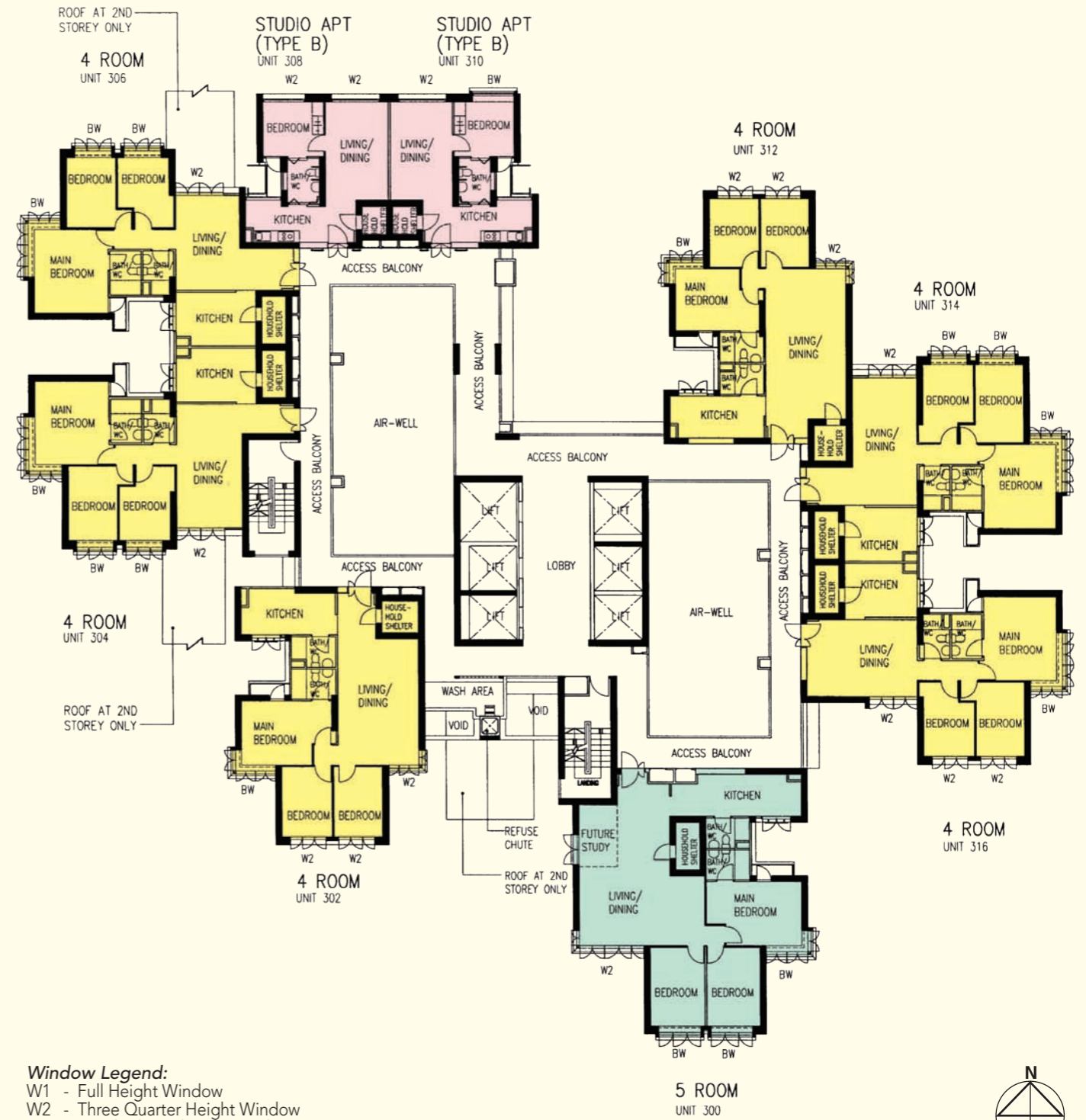
- Additional Features:**
- Bedroom/Bathroom/WC : Decorative Timber Doors (D4) for 4-Room & 5-Room
 - Concealed Electrical Wiring & Water Supply Pipes

The coloured floor plan is not intended to demarcate the boundary of the flat.

LEGEND:

- 3 Room
- 4 Room
- 5 Room

SCALE 0 2 4 6 8 10 METRES



Window Legend:
 W1 - Full Height Window
 W2 - Three Quarter Height Window
 BW - Standard Height Bay Window

Unless otherwise indicated all windows will be standard height windows.



2ND TO 4TH, 8TH TO 10TH, 14TH TO 16TH & 20TH STOREY FLOOR PLAN BLOCK 91

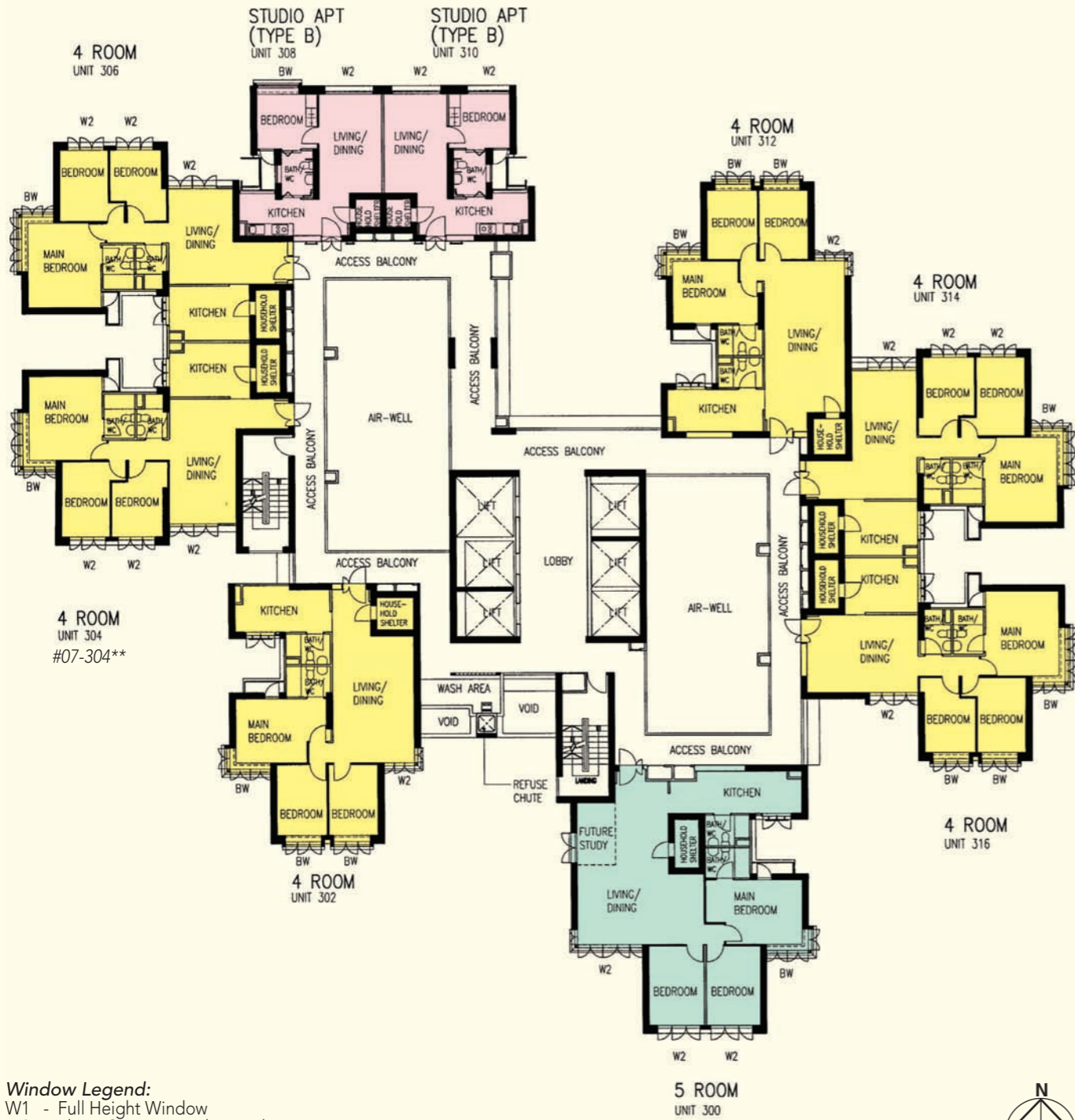
- Additional Features:**
- Bedroom/Bathroom/WC : Decorative Timber Doors (D4) for 4-Room & 5-Room
 - Concealed Electrical Wiring & Water Supply Pipes

The coloured floor plan is not intended to demarcate the boundary of the flat.

LEGEND:

- Studio Apartment (Type B)
- 4 Room
- 5 Room

SCALE 0 2 4 6 8 10 METRES



Window Legend:
W1 - Full Height Window
W2 - Three Quarter Height Window
BW - Standard Height Bay Window

Unless otherwise indicated all windows will be standard height windows.

**This is a Repurchased Flat
Photographs and the revised floor plan (if any) can be viewed at www.hdb.gov.sg/esales.

5TH TO 7TH, 11TH TO 13TH, 17TH TO 19TH STOREY FLOOR PLAN BLOCK 91

Additional Features:
• Bedroom/Bathroom/WC : Decorative Timber Doors (D4) for 4-Room & 5-Room
• Concealed Electrical Wiring & Water Supply Pipes

LEGEND:
 Studio Apartment (Type B)
 4 Room
 5 Room

SCALE 0 2 4 6 8 10 METRES



Window Legend:
W1 - Full Height Window
W2 - Three Quarter Height Window
BW - Standard Height Bay Window

Unless otherwise indicated all windows will be standard height windows.

23RD TO 25TH, 29TH TO 31ST, 35TH TO 37TH STOREY FLOOR PLAN BLOCK 91

Additional Features:
• Bedroom/Bathroom/WC : Decorative Timber Doors (D4) for 4-Room & 5-Room
• Concealed Electrical Wiring & Water Supply Pipes

LEGEND:
 4 Room
 5 Room

SCALE 0 2 4 6 8 10 METRES

The coloured floor plan is not intended to demarcate the boundary of the flat.

Buona Vista Court



Queenstown N5 RC24 Standard Flats

Scale 0 20 40 60 Metres



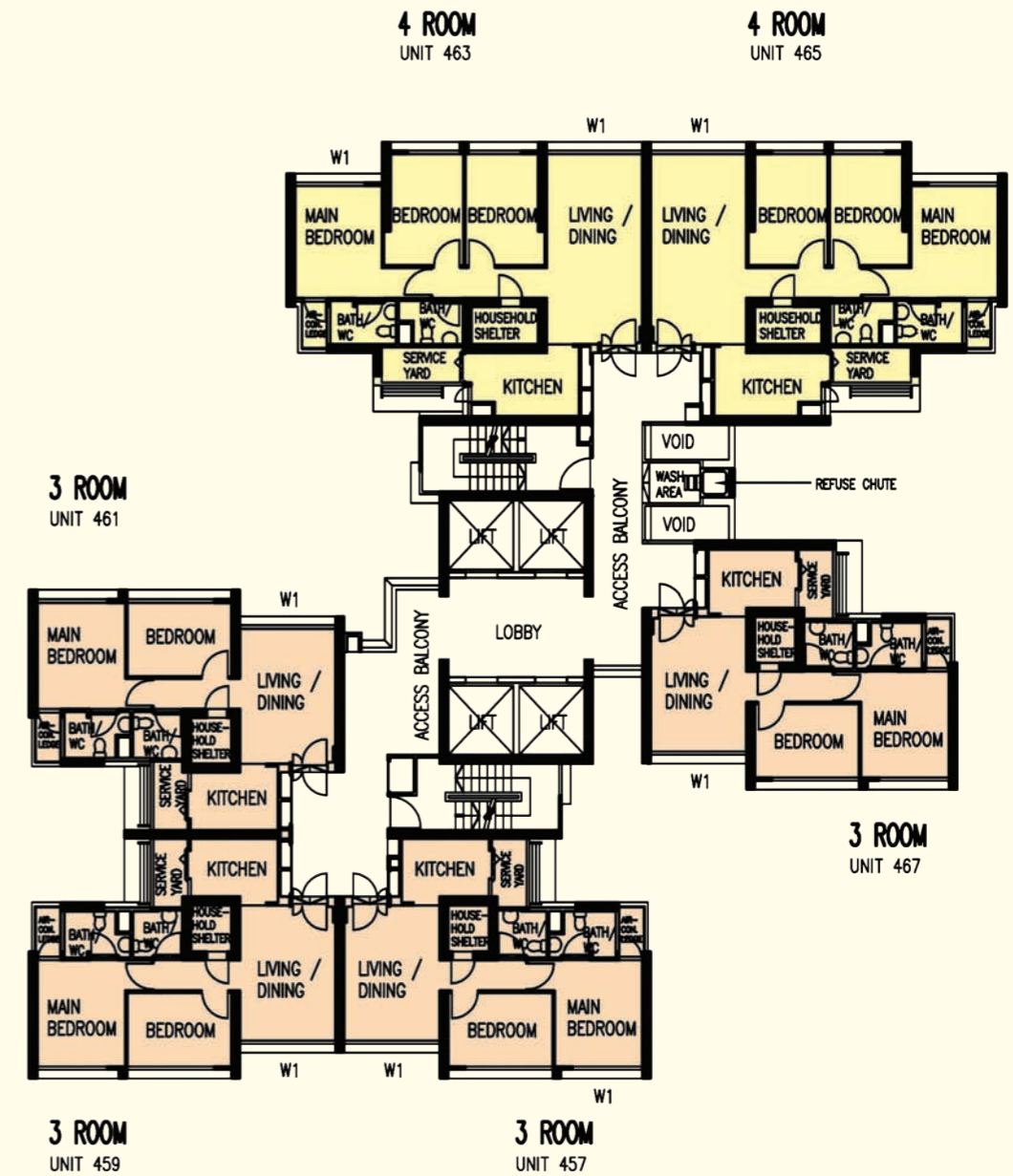
LEGEND:

- 3 - Room
- 4 - Room
- 5 - Room
- Surrounding Buildings
- Single Storey / Precinct Pavilion / Linkway / Drop-Off Porch / Pergola / Pavilion / Gazebo
- Reserved for / Existing Development
- Playground (PG) / Fitness Station or Wellness Station
- Education Centre (EC) / Social Service Centre (SSC) / Residents' Committee Centre (RCC) at 1st Storey
- Space for Future Community Facilities (FCF) at 1st Storey
- Electrical Substation (ESS) at 1st Storey
- Utility Centre (UC) at 1st Storey
- Drainage Reserve
- Multi Storey Carparking
- Open Space
- Staircase
- Service Bay
- Centralised Refuse Chute (CRC)
- Lift

Artist's Impression



The information contained herein is subject to change at any time without notice and cannot form part of an offer or contract. The proposed facilities and their locations as shown are only estimates. The proposed facilities may include other ancillary uses allowed under URA's prevailing Development Control guidelines. For example, places of worship may also include columbarium as an ancillary use, while community centres may also include childcare centres. The implementation of the facilities is subject to review by the Government or competent authorities. While reasonable care has been taken in providing this information, HDB shall not be responsible in any way for any damage or loss suffered by any person whether directly or indirectly as a result of reliance on the said information or as a result of any error or omission therein.



LEGEND:

- 3 Room
- 4 Room
- 5 Room

W1 - Three Quarter Height Window (approx. 700mm high parapet wall)

Unless otherwise indicated all windows will be standard height windows.

SCALE 0 2 4 6 8 10 METRES

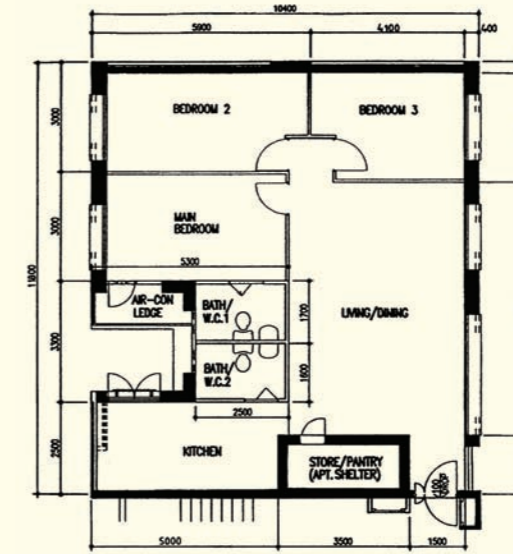
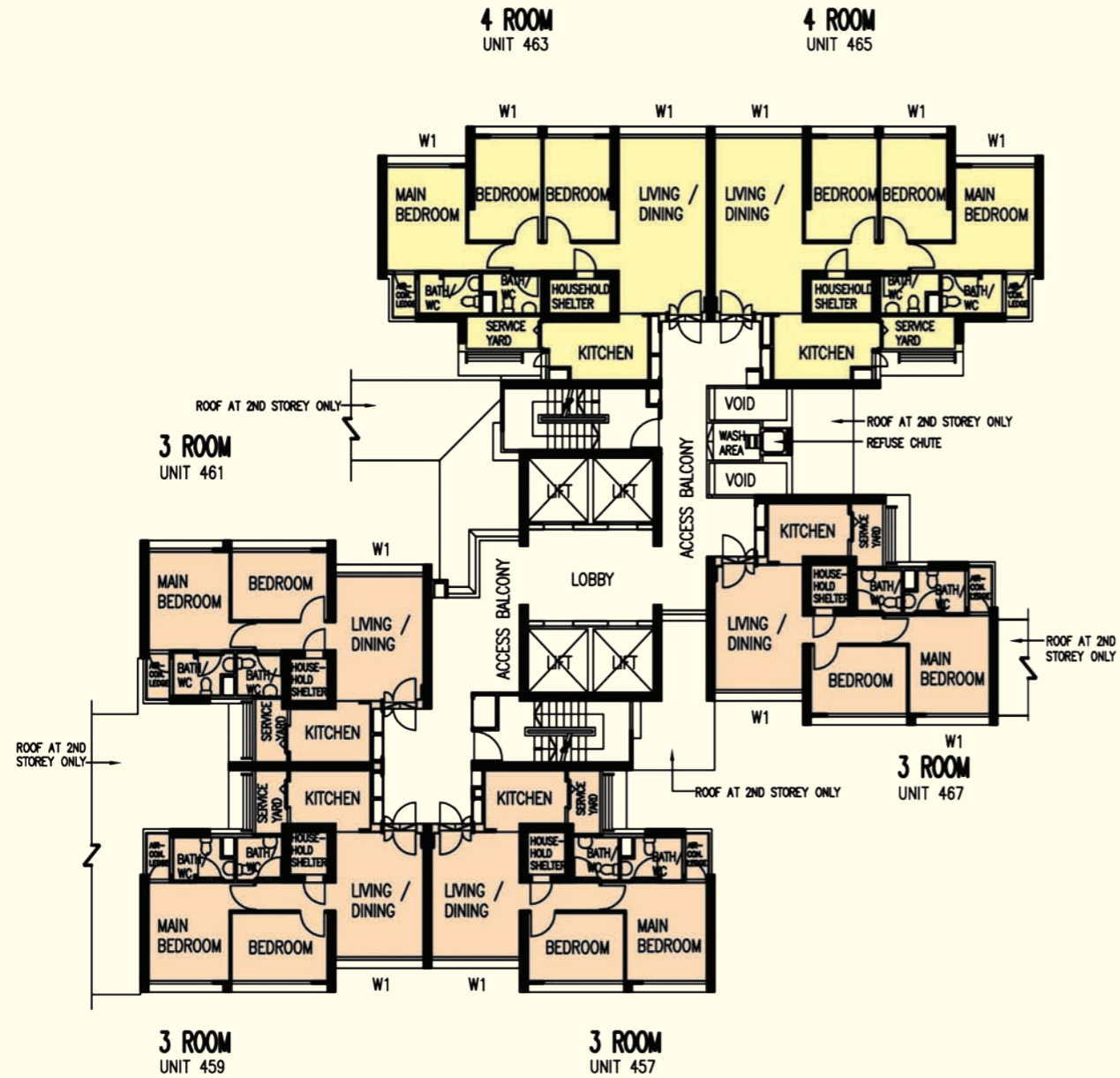
Additional Features:

- Bedroom : Decorative Semi-Solid Timber Doors (Type D9)
- Bathrooms/WC : Laminated Semi-Solid Timber Doors (Type D9a)
- Ceramic Tiles to Bathrooms/WC/Kitchen Floor
- Ceramic Tiles with Tile Skirting to Service Yard Floor
- Ceramic Tiles to Household Shelter Floor
- Concealed Electrical Wiring & Water Supply Pipes
- Vanity Top Wash Basin at Bathroom/WC of Main Bedroom for 5-Room Flat

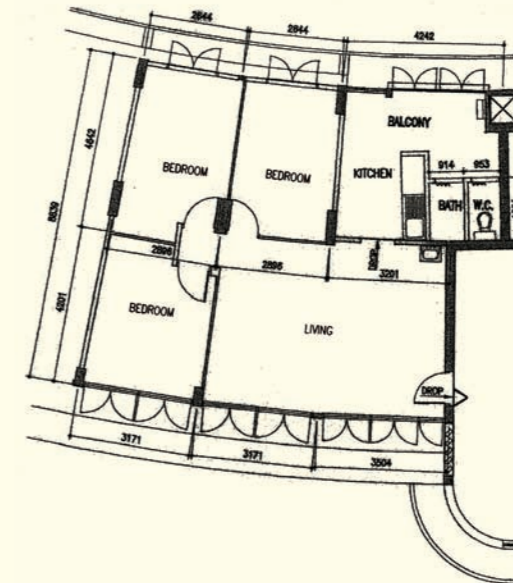
17TH, 19TH, 26TH, 29TH, 33RD & 36TH STOREY FLOOR PLAN BLOCK 18A

The coloured floor plan is not intended to demarcate the boundary of the flat.





5 - Room
 QT N1 RC13
 Block 56, #02-129**



4 - Room
 Stirling View
 QT N2 C11
 Block 168A, #02-222**

LEGEND:

- 3 Room
- 4 Room
- 5 Room

W1 - Three Quarter Height Window (approx. 700mm high parapet wall)

Unless otherwise indicated all windows will be standard height windows.



Additional Features:

- Bedroom : Decorative Semi-Solid Timber Doors (Type D9)
- Bathrooms/WC : Laminated Semi-Solid Timber Doors (Type D9a)
- Ceramic Tiles to Bathrooms/WC/Kitchen Floor
- Ceramic Tiles with Tile Skirting to Service Yard Floor
- Ceramic Tiles to Household Shelter Floor
- Concealed Electrical Wiring & Water Supply Pipes
- Vanity Top Wash Basin at Bathroom/WC of Main Bedroom for 5-Room Flat

**2ND, 5TH, 12TH, 14TH, 18TH, 25TH
 30TH & 37TH STOREY FLOOR PLAN
 BLOCK 18A**

The coloured floor plan is not intended to demarcate the boundary of the flat.

**This is a Repurchased Flat

Photographs and the revised floor plan (if any) can be viewed at www.hdb.gov.sg/esales