

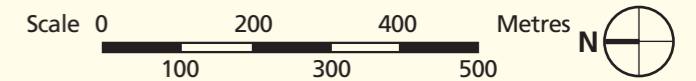
# CLEMENTI Town Map



## LEGEND:

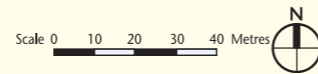
- Contracts with Standard Flats
- MRT Line & Station
- (u/c) Under Construction

**Note:**  
All proposed developments are subject to change and planning approval.



The information contained herein is subject to change at any time without notice and cannot form part of an offer or contract. The proposed facilities and their locations as shown are only estimates. The proposed facilities may include other ancillary uses allowed under URA's prevailing Development Control guidelines. For example, places of worship may also include columbarium as an ancillary use, while community centres may also include childcare centres. The implementation of the facilities is subject to review by the Government or competent authorities. While reasonable care has been taken in providing this information, HDB shall not be responsible in any way for any damage or loss suffered by any person whether directly or indirectly as a result of reliance on the said information or as a result of any error or omission therein.

**Clementi N4 C9**  
Standard Flats

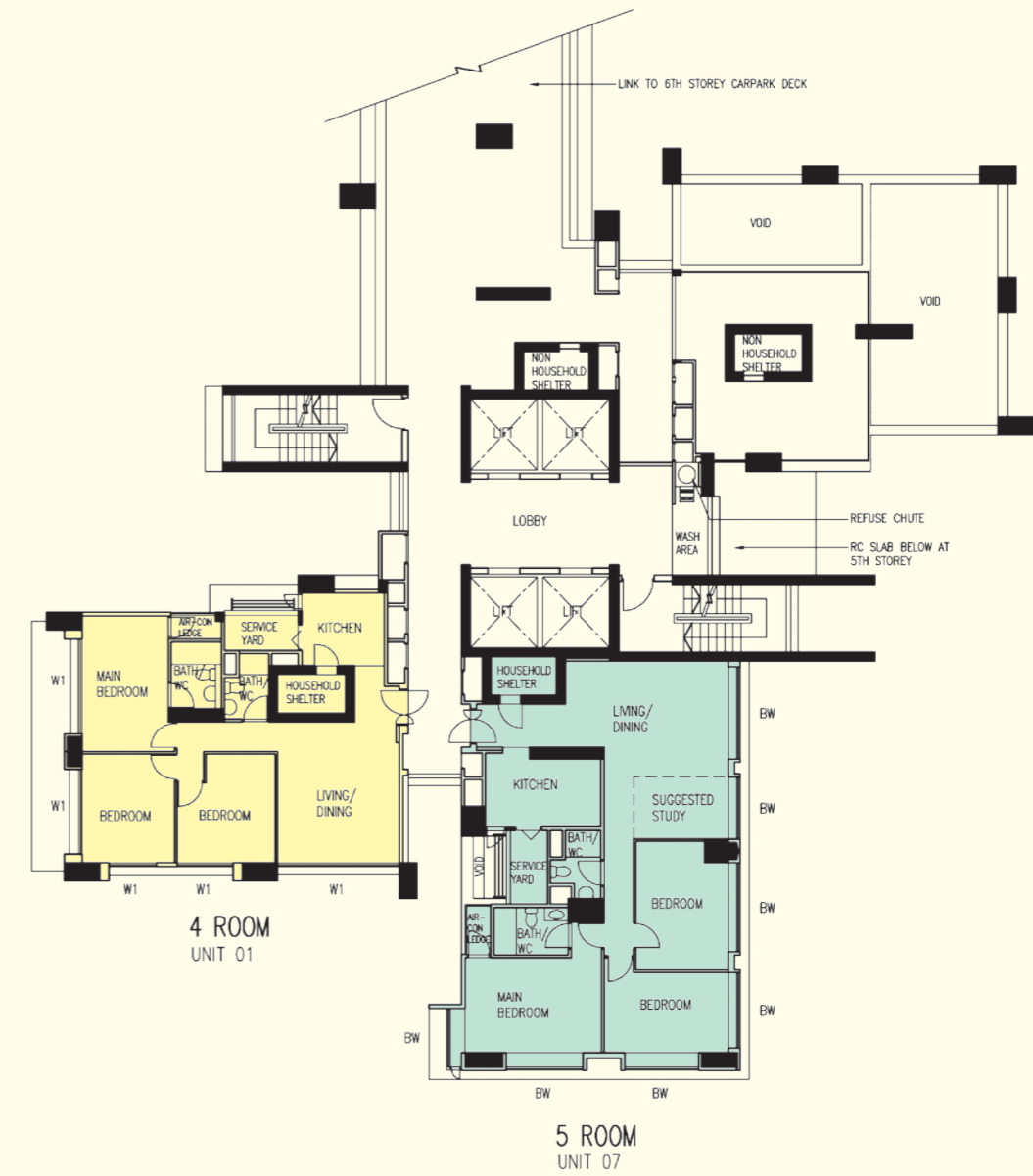


- Legend:**
- Location of 3 - Room
  - Location of 4 - Room
  - Location of 5 - Room
  - Precinct Pavilion/Linkway/Canopy
  - Reserved for/Existing Development
  - Surrounding Buildings
  - Playground (PG)/Fitness Corner (FC)/ Elderly Fitness Corner (EFC)
  - Link Bridge at 6th, 7th, 8th & 9th Storey of Point Block
  - M & E Services at 8th Storey
  - Shops at 1st Storey
  - Paved Area at 1st Storey
  - Open Space
  - Staircase
  - Refuse Chute (Pneumatic System)
  - Lift
  - Pergola



Artist's Impression

The information contained herein is subject to change at any time without notice and cannot form part of an offer or contract. The proposed facilities and their locations as shown are only estimates. The proposed facilities may include other ancillary uses allowed under URA's prevailing Development Control guidelines. For example, places of worship may also include columbarium as an ancillary use, while community centres may also include childcare centres. The implementation of the facilities is subject to review by the Government or competent authorities. While reasonable care has been taken in providing this information, HDB shall not be responsible in any way for any damage or loss suffered by any person whether directly or indirectly as a result of reliance on the said information or as a result of any error or omission therein.

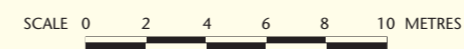


**LEGEND:**

- 3 Room
- 4 Room
- 5 Room

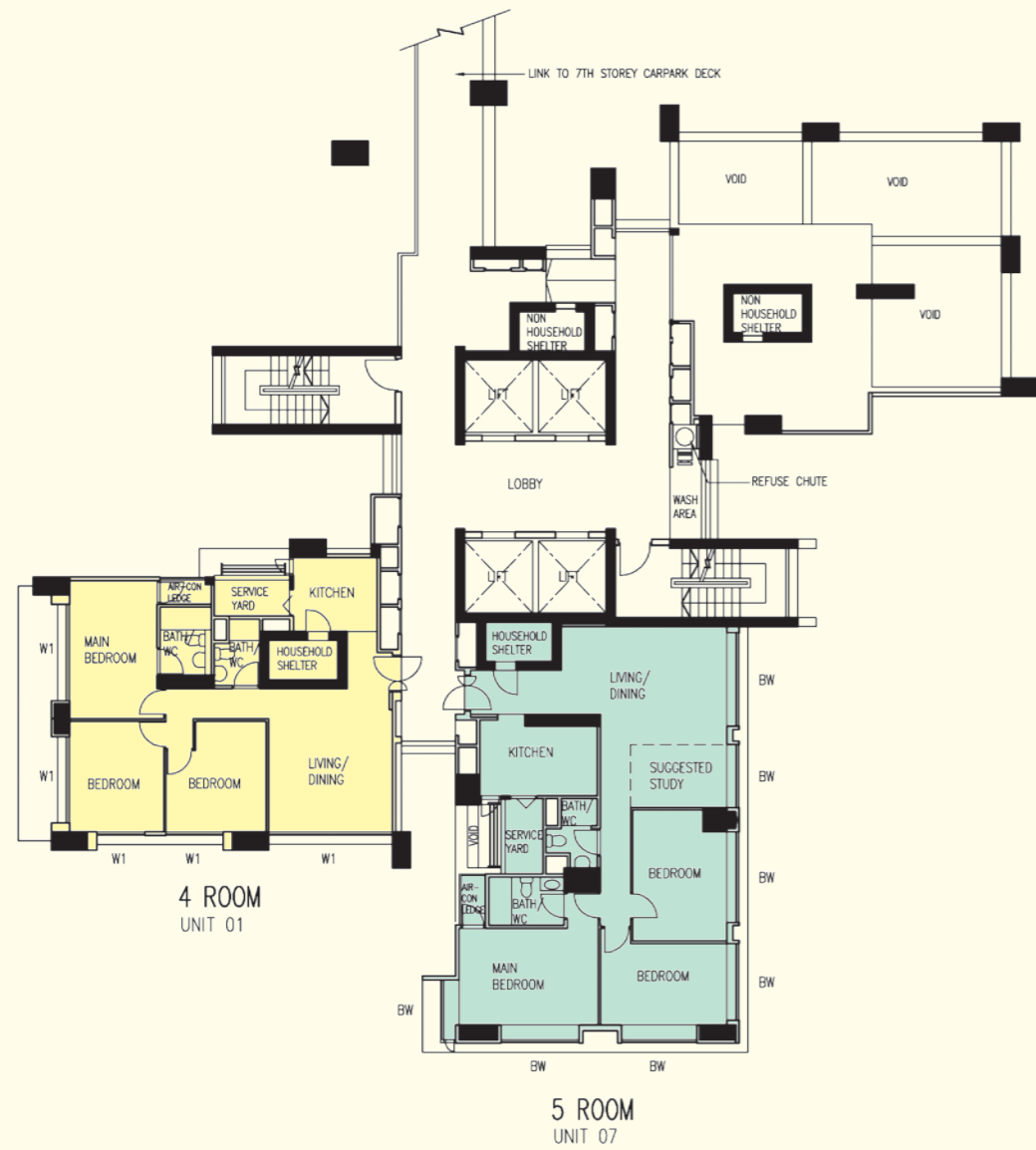
- BW - Bay Window (Approx. 500mm High Parapet Wall)
- W1 - Three Quarter Height Window (Approx. 500mm High Parapet Wall)

Unless otherwise indicated all windows will be standard height windows.



**6TH STOREY FLOOR PLAN**  
**BLOCK 441A**

*The coloured floor plan is not intended to demarcate the boundary of the flat.*



**LEGEND:**

- 3 Room
- 4 Room
- 5 Room

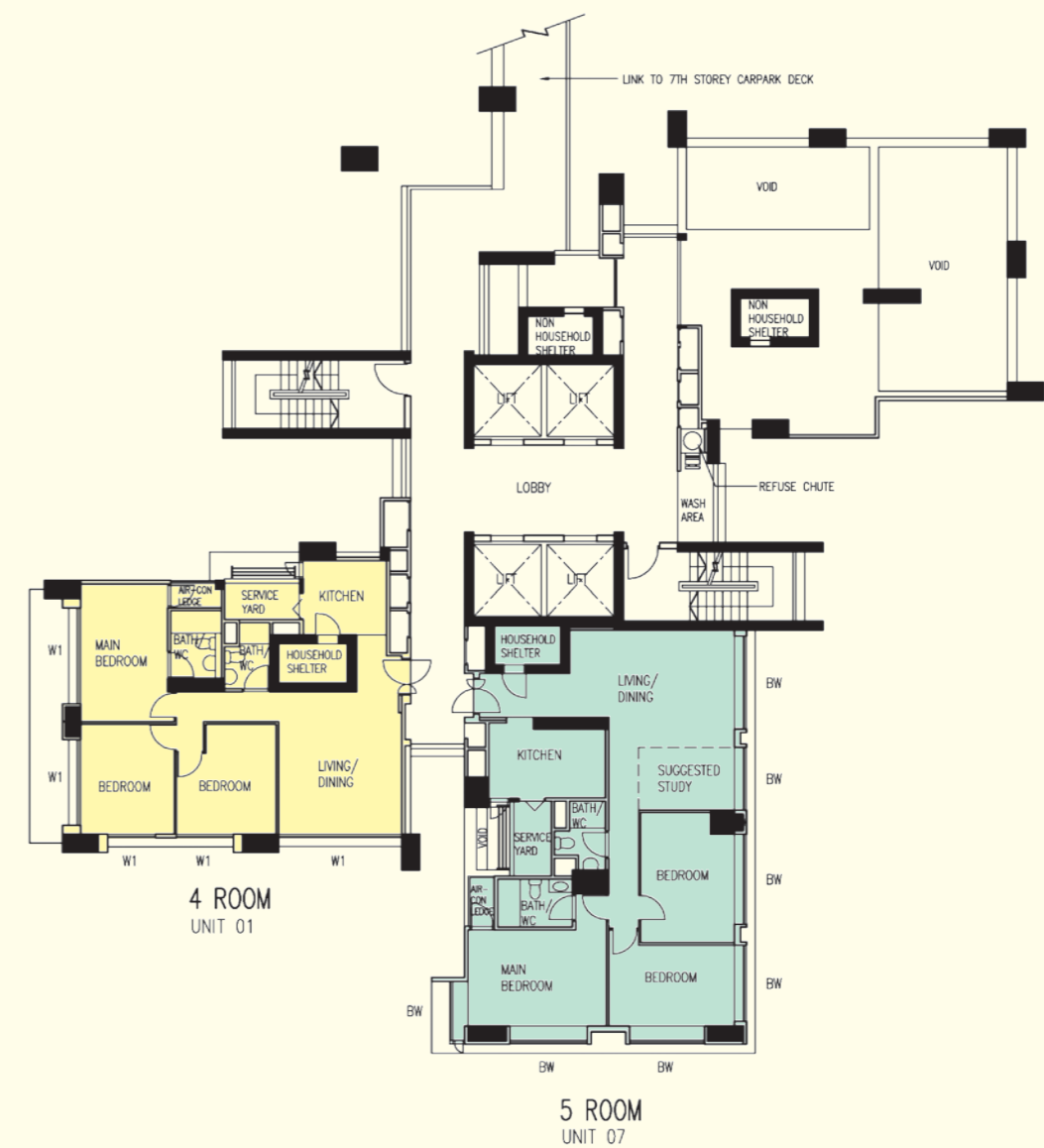
BW - Bay Window (Approx. 500mm High Parapet Wall)  
 W1 - Three Quarter Height Window (Approx. 500mm High Parapet Wall)

Unless otherwise indicated all windows will be standard height windows.



## 7TH STOREY FLOOR PLAN BLOCK 441A

The coloured floor plan is not intended to demarcate the boundary of the flat.



**LEGEND:**

- 3 Room
- 4 Room
- 5 Room

BW - Bay Window (Approx. 500mm High Parapet Wall)  
 W1 - Three Quarter Height Window (Approx. 500mm High Parapet Wall)

Unless otherwise indicated all windows will be standard height windows.



## 8TH STOREY FLOOR PLAN BLOCK 441A

The coloured floor plan is not intended to demarcate the boundary of the flat.



**LEGEND:**

- 3 Room
- 4 Room
- 5 Room

BW - Bay Window (Approx. 500mm High Parapet Wall)  
 W1 - Three Quarter Height Window (Approx. 500mm High Parapet Wall)

Unless otherwise indicated all windows will be standard height windows.



## 9TH STOREY FLOOR PLAN BLOCK 441A

*The coloured floor plan is not intended to demarcate the boundary of the flat.*



**LEGEND:**

- 3 Room
- 4 Room
- 5 Room

BW - Bay Window (Approx. 500mm High Parapet Wall)  
 W1 - Three Quarter Height Window (Approx. 500mm High Parapet Wall)

Unless otherwise indicated all windows will be standard height windows.



## 10TH, 16TH TO 18TH STOREY FLOOR PLAN BLOCK 441A

*The coloured floor plan is not intended to demarcate the boundary of the flat.*



**LEGEND:**  
 3 Room  
 4 Room  
 5 Room

BW - Bay Window (Approx. 500mm High Parapet Wall)  
 W1 - Three Quarter Height Window (Approx. 500mm High Parapet Wall)

Unless otherwise indicated all windows will be standard height windows.



## 11TH TO 14TH STOREY FLOOR PLAN BLOCK 441A

The coloured floor plan is not intended to demarcate the boundary of the flat.



**LEGEND:**  
 3 Room  
 4 Room  
 5 Room

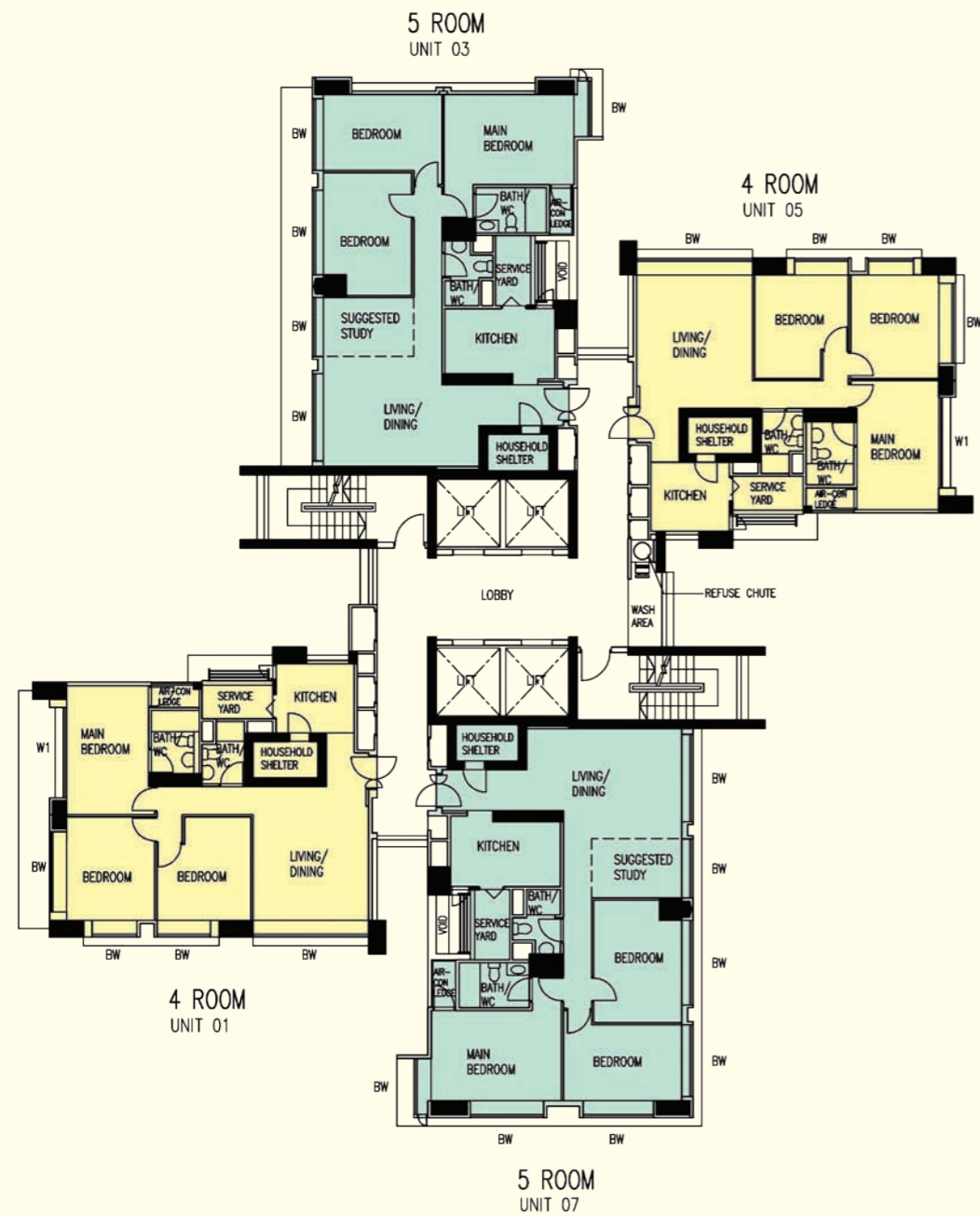
BW - Bay Window (Approx. 500mm High Parapet Wall)  
 W1 - Three Quarter Height Window (Approx. 500mm High Parapet Wall)

Unless otherwise indicated all windows will be standard height windows.



## 15TH STOREY FLOOR PLAN BLOCK 441A

The coloured floor plan is not intended to demarcate the boundary of the flat.



**LEGEND:**

- 3 Room
- 4 Room
- 5 Room

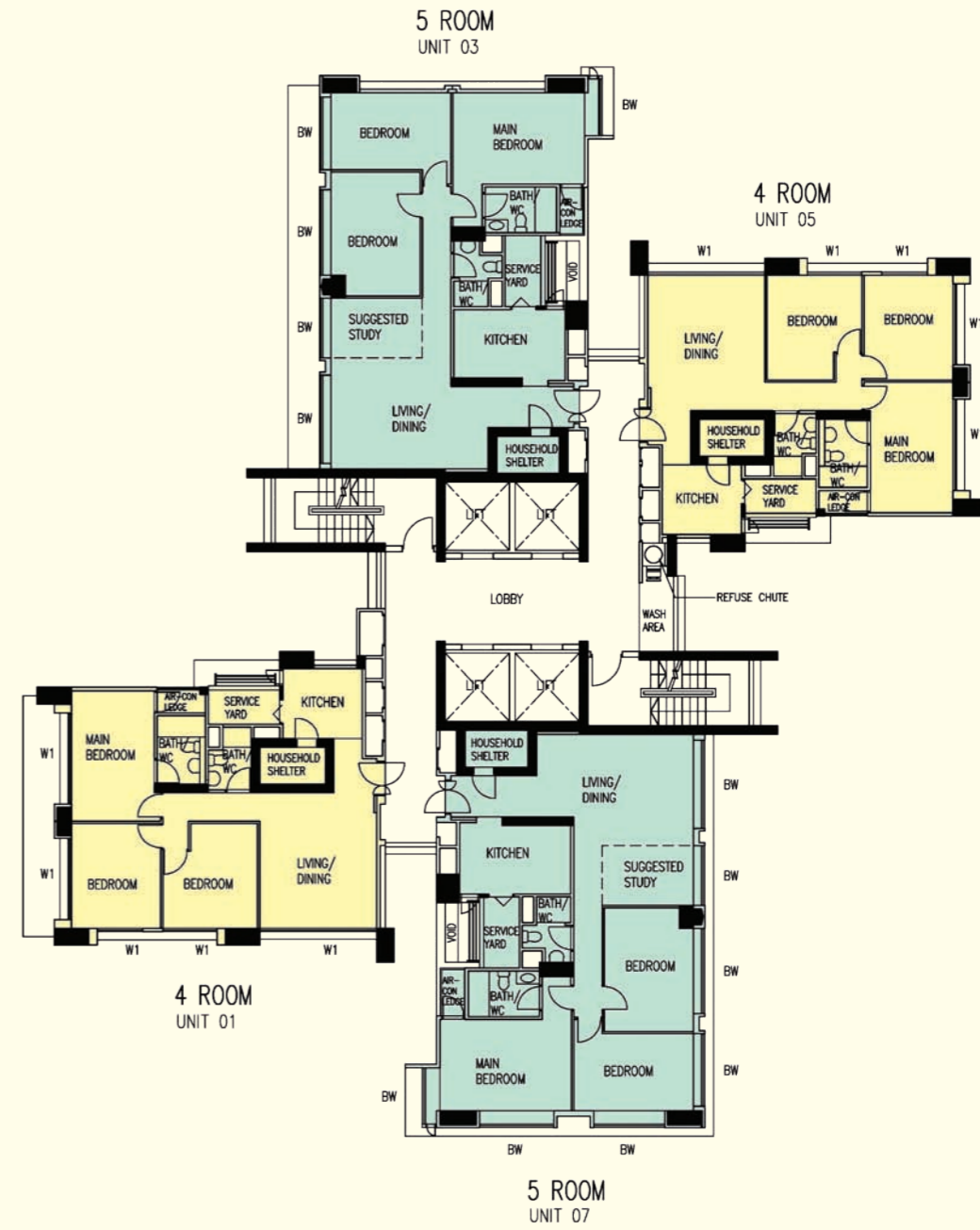
BW - Bay Window (Approx. 500mm High Parapet Wall)  
 W1 - Three Quarter Height Window (Approx. 500mm High Parapet Wall)

Unless otherwise indicated all windows will be standard height windows.



## 19TH TO 22ND STOREY FLOOR PLAN BLOCK 441A

*The coloured floor plan is not intended to demarcate the boundary of the flat.*



**LEGEND:**

- 3 Room
- 4 Room
- 5 Room

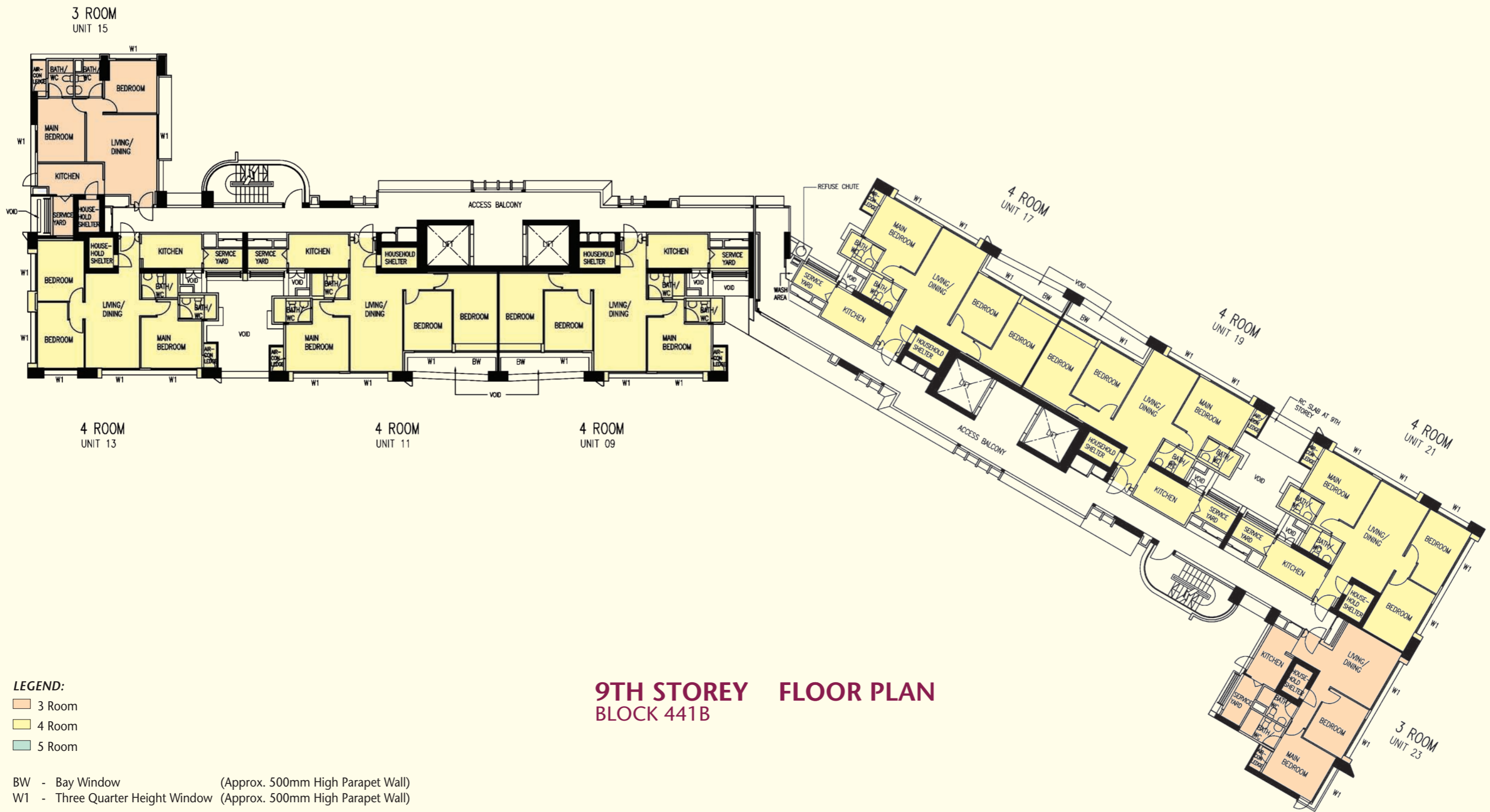
BW - Bay Window (Approx. 500mm High Parapet Wall)  
 W1 - Three Quarter Height Window (Approx. 500mm High Parapet Wall)

Unless otherwise indicated all windows will be standard height windows.



## 24TH TO 26TH, 34TH & 40TH STOREY FLOOR PLAN BLOCK 441A

*The coloured floor plan is not intended to demarcate the boundary of the flat.*

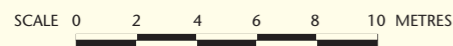


**LEGEND:**

- 3 Room
- 4 Room
- 5 Room

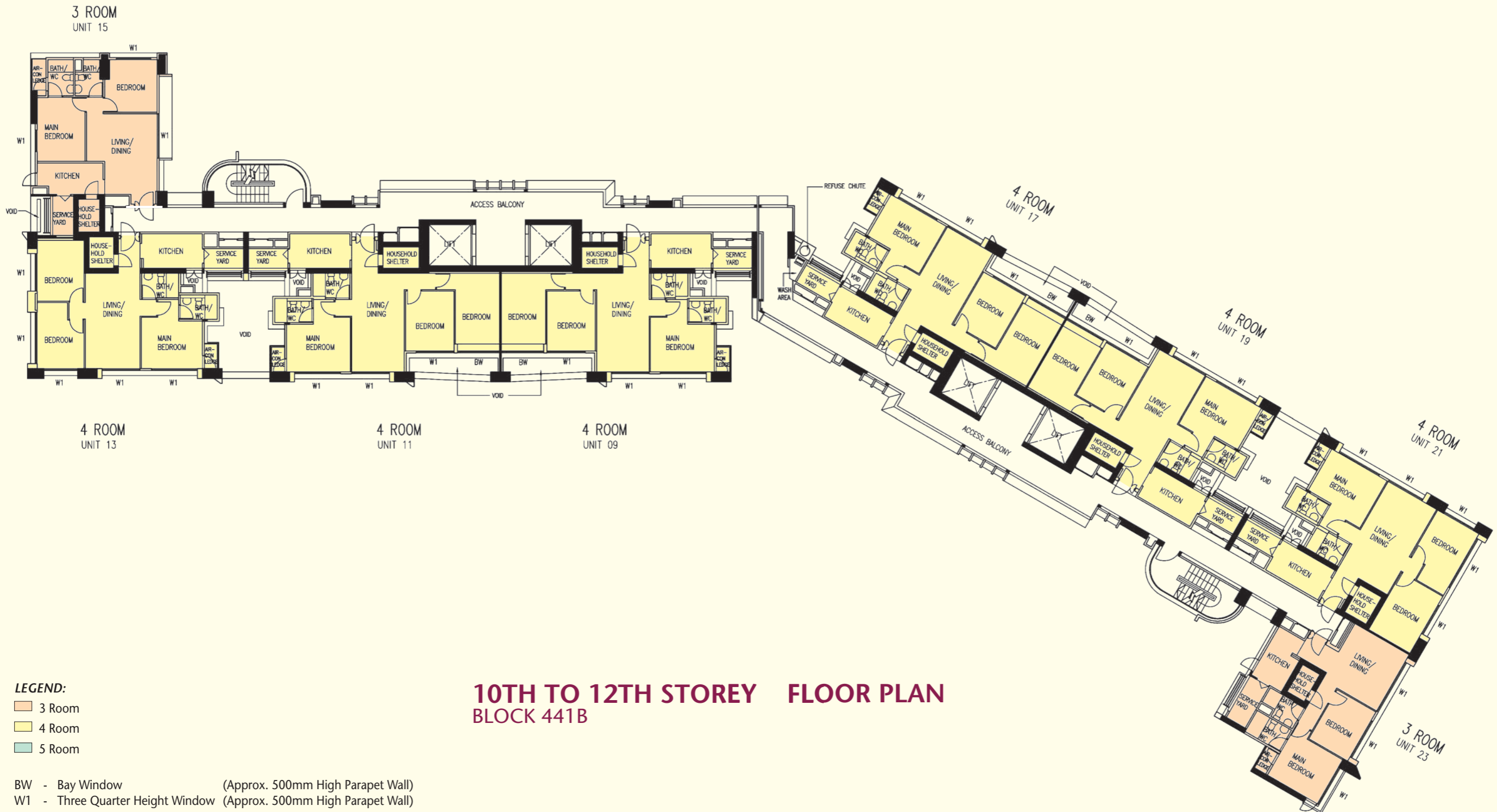
BW - Bay Window (Approx. 500mm High Parapet Wall)  
 W1 - Three Quarter Height Window (Approx. 500mm High Parapet Wall)

Unless otherwise indicated all windows will be standard height windows.



**9TH STOREY FLOOR PLAN  
 BLOCK 441B**

*The coloured floor plan is not intended to demarcate the boundary of the flat.*

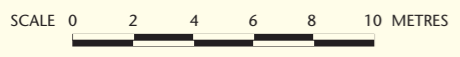


**LEGEND:**

- 3 Room
- 4 Room
- 5 Room

BW - Bay Window (Approx. 500mm High Parapet Wall)  
 W1 - Three Quarter Height Window (Approx. 500mm High Parapet Wall)

Unless otherwise indicated all windows will be standard height windows.

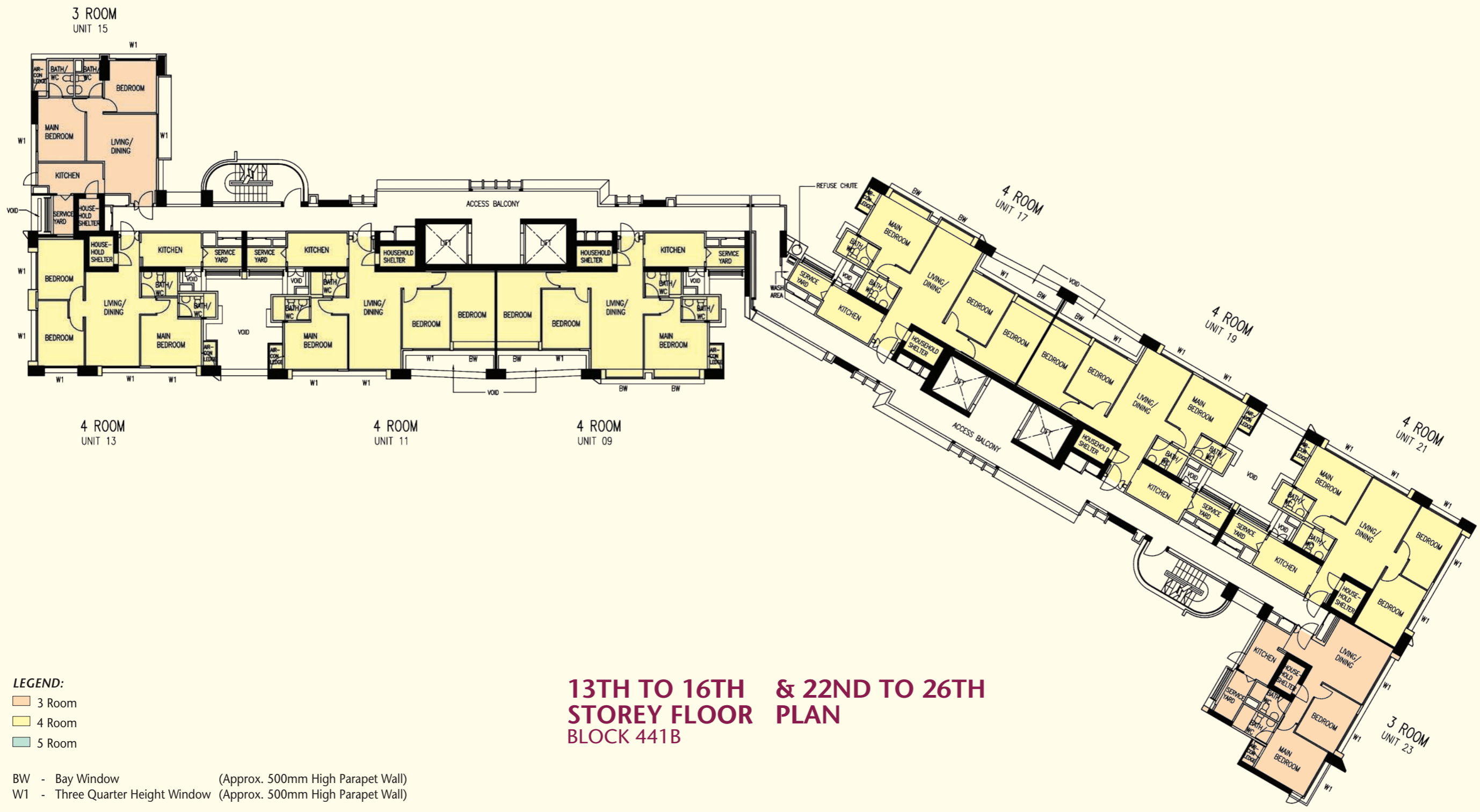


**10TH TO 12TH STOREY FLOOR PLAN  
 BLOCK 441B**

*The coloured floor plan is not intended to demarcate the boundary of the flat.*







**13TH TO 16TH & 22ND TO 26TH STOREY FLOOR PLAN**  
**BLOCK 441B**

**LEGEND:**

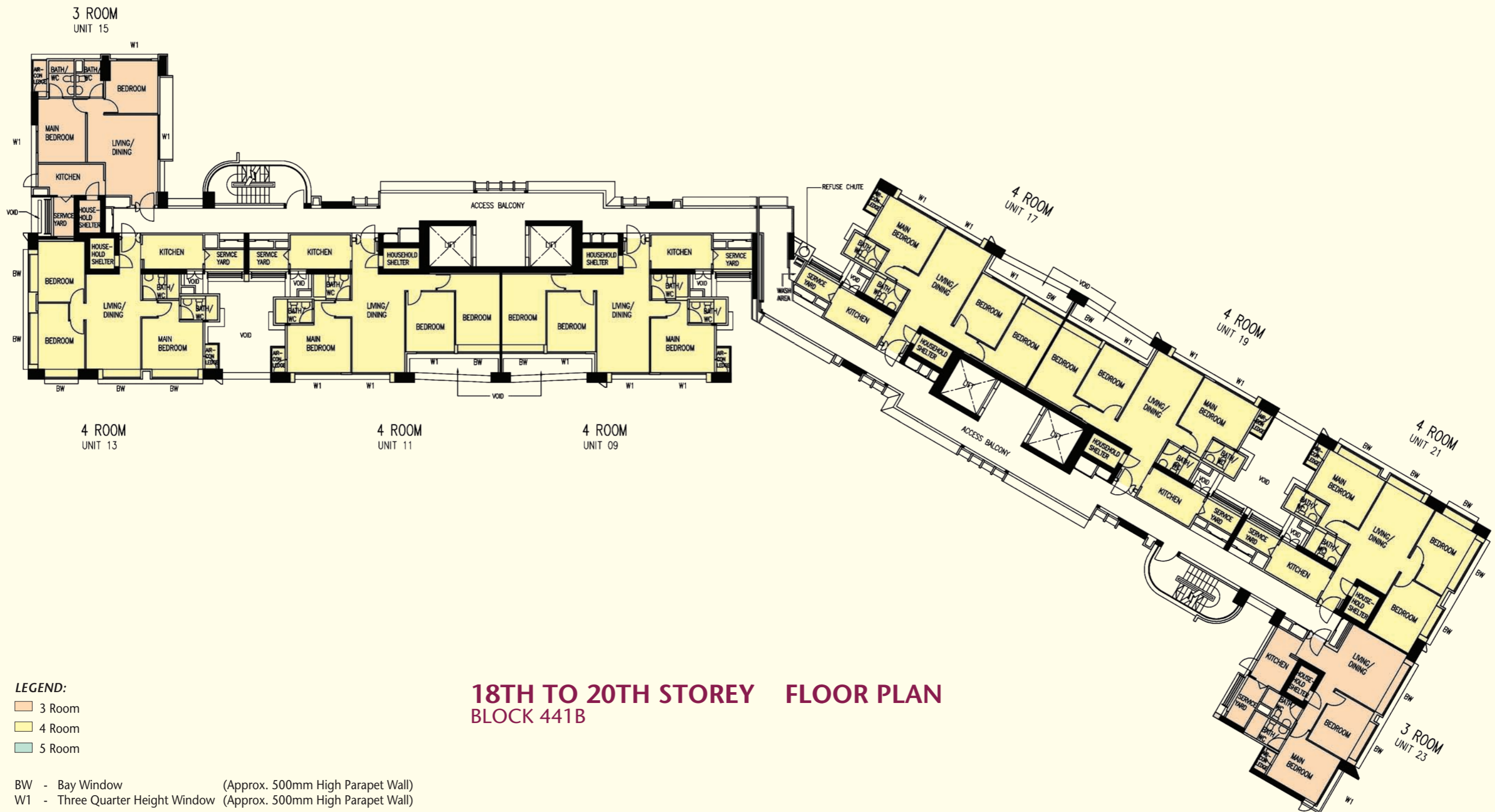
- 3 Room
- 4 Room
- 5 Room

BW - Bay Window (Approx. 500mm High Parapet Wall)  
 W1 - Three Quarter Height Window (Approx. 500mm High Parapet Wall)

Unless otherwise indicated all windows will be standard height windows.



*The coloured floor plan is not intended to demarcate the boundary of the flat.*



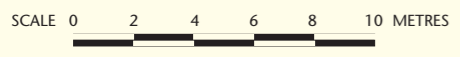
**18TH TO 20TH STOREY FLOOR PLAN  
BLOCK 441B**

**LEGEND:**

- 3 Room
- 4 Room
- 5 Room

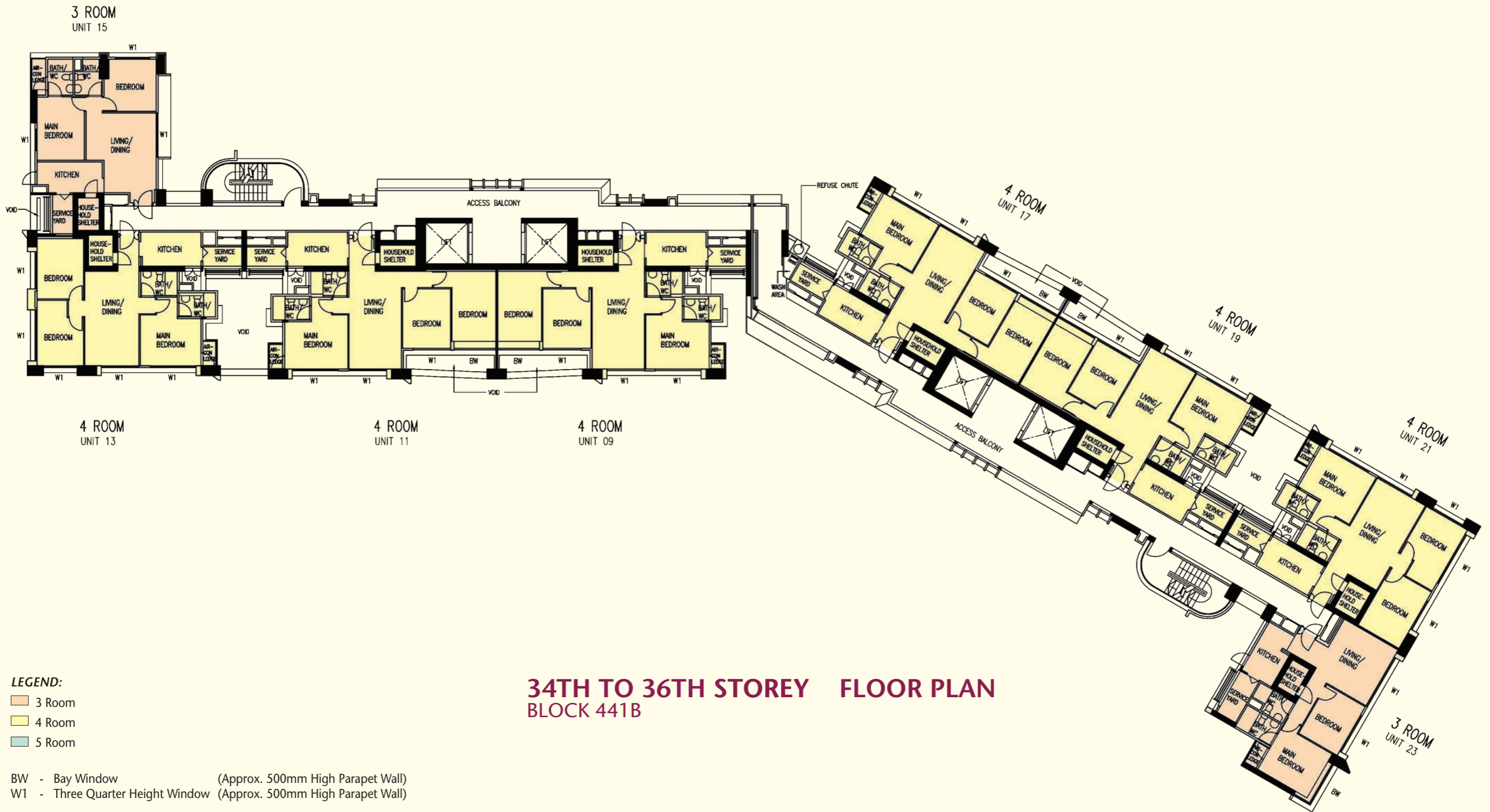
BW - Bay Window (Approx. 500mm High Parapet Wall)  
 W1 - Three Quarter Height Window (Approx. 500mm High Parapet Wall)

Unless otherwise indicated all windows will be standard height windows.



The coloured floor plan is not intended to demarcate the boundary of the flat.





**LEGEND:**  
 3 Room  
 4 Room  
 5 Room

BW - Bay Window (Approx. 500mm High Parapet Wall)  
 W1 - Three Quarter Height Window (Approx. 500mm High Parapet Wall)

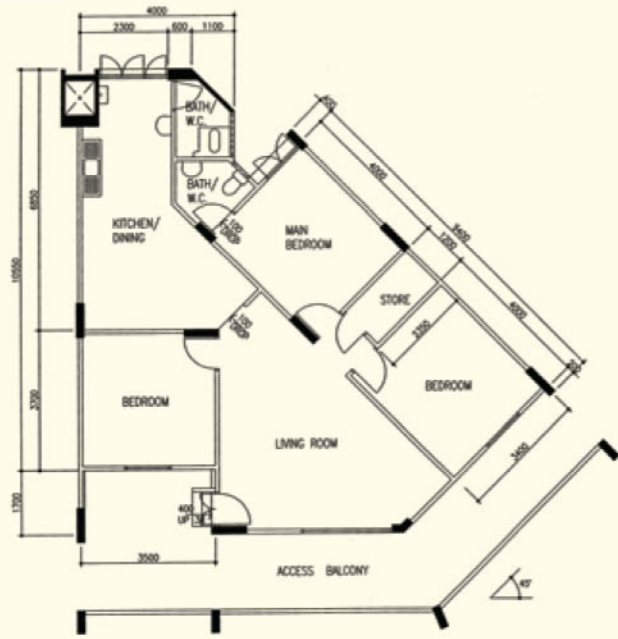
Unless otherwise indicated all windows will be standard height windows.



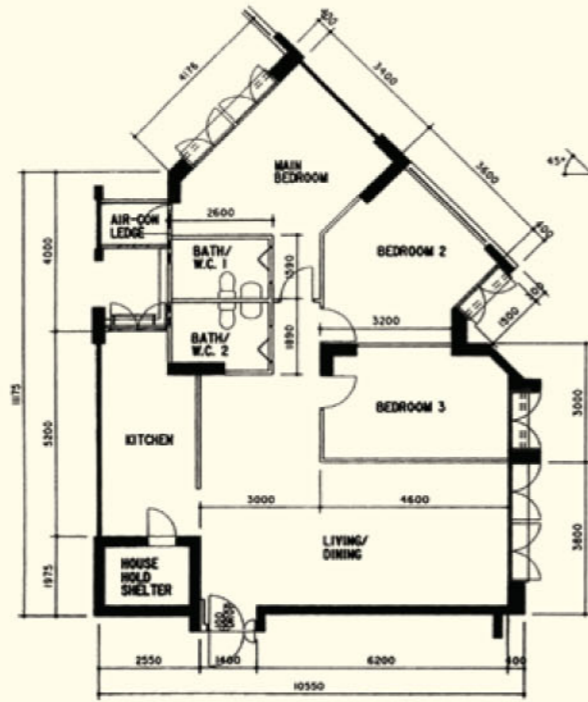
**34TH TO 36TH STOREY FLOOR PLAN  
 BLOCK 441B**

The coloured floor plan is not intended to demarcate the boundary of the flat.

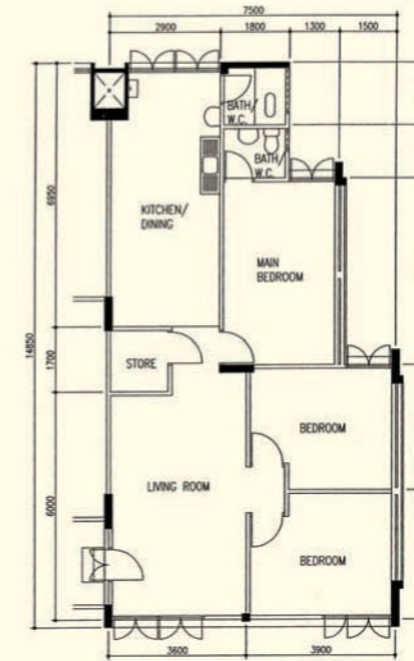




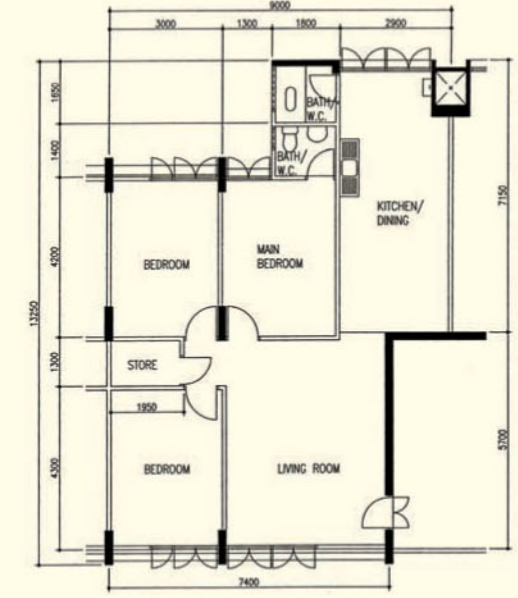
**4 - Room**  
CL N4 C1  
Block 449, #04-251\*\*



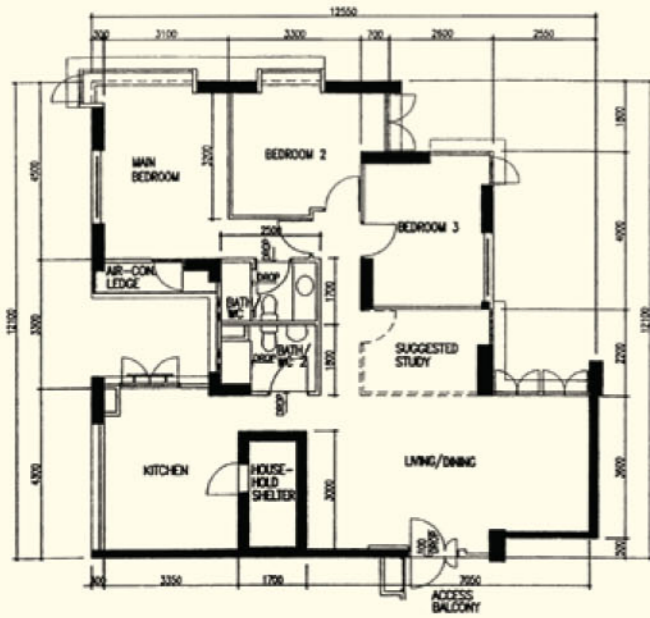
**5 - Room**  
Clementi Heights  
CL N4 C7  
Block 458, #17-584\*\*



**4 - Room**  
CL N5 C2  
Block 507, #03-247\*\*



**4 - Room**  
CL N5 C1  
Block 511, #03-321\*\*



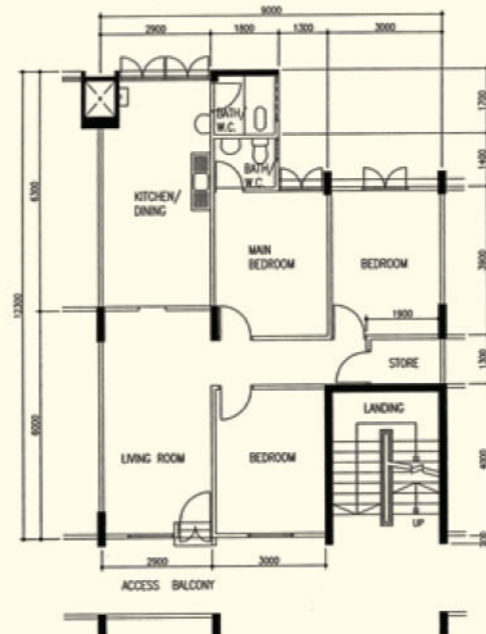
**5 - Room**  
Clementi Heights  
CL N4 C7A  
Block 461, #02-606

**Additional Features:**

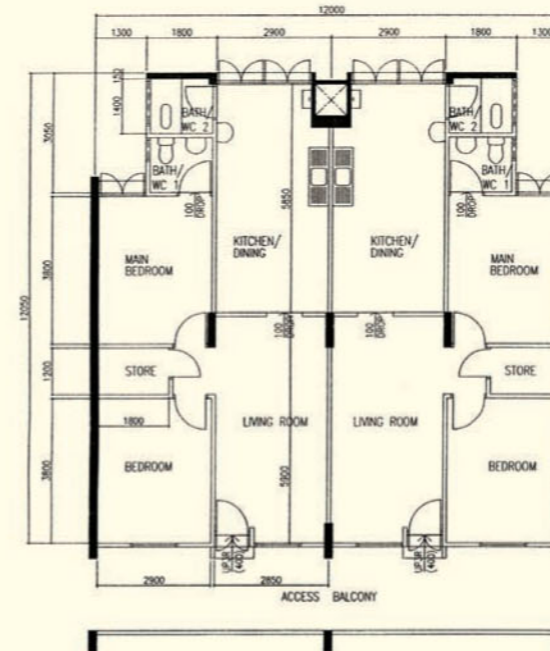
- Concealed Electrical Wiring & Water Supply Pipes
- Bedroom/Bathroom/WC : Decorative Timber Door (Type D2)

BLOCK NUMBER	HOUSE NUMBERS	PROVISION OF FULL-HEIGHT WINDOWS
		LIVING ROOM
461	All units from 2nd to 25th storey	Yes

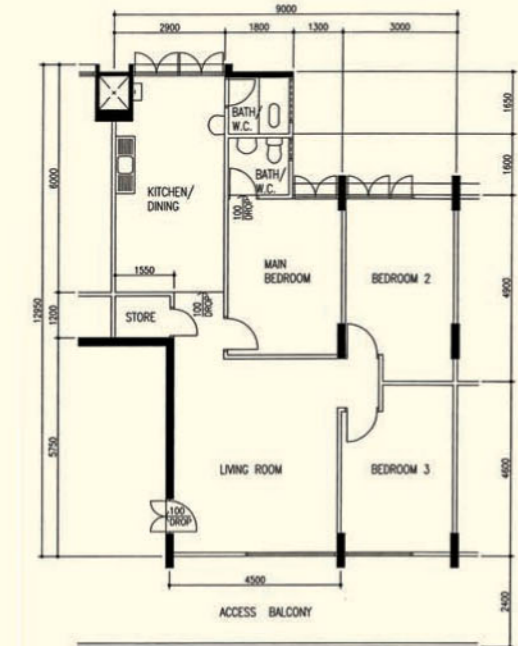
\*\*This is a Repurchased Flat  
Photographs and the revised floor plan (if any) can be viewed at [www.hdb.gov.sg/esales](http://www.hdb.gov.sg/esales)



**4 - Room**  
CL N5 C1  
Block 510, #05-311\*\*

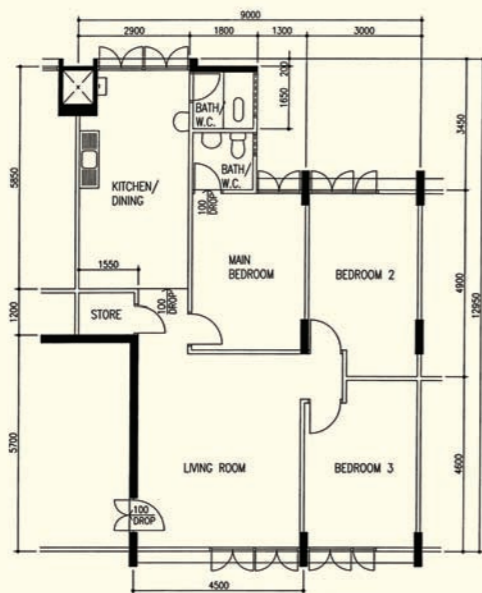


**5 - Room**  
CL N7 C3  
Block 730, #07-328\*\*



**4 - Room**  
CL N7 C4B  
Block 715, #05-93\*\*

\*\*This is a Repurchased Flat  
Photographs and the revised floor plan (if any) can be viewed at [www.hdb.gov.sg/esales](http://www.hdb.gov.sg/esales)



**4 - Room**  
 CL N7 C7  
 Block 709, #02-283\*\*

\*\*This is a Repurchased Flat  
 Photographs and the revised floor plan (if any) can be viewed at [www.hdb.gov.sg/esales](http://www.hdb.gov.sg/esales)