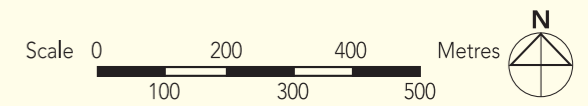


BEDOK Town Map



- LEGEND:**
- Contracts with Standard Flats
 - MRT Line & Station
 - (u/c) Under Construction

Notes:
 All proposed developments are subject to change and planning approval.
 Proposed Civic & Community Institution includes examples like Association, Home for the Aged, Community Centre/Club, Library, etc., subject to change and planning approval.
 Proposed Health & Medical Care (eg. Nursing Home) subject to change and planning approval.

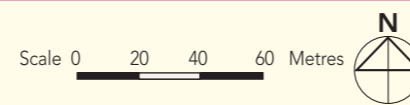


The information contained herein is subject to change at any time without notice and cannot form part of an offer or contract. The proposed facilities and their locations as shown are only estimates. The proposed facilities may include other ancillary uses allowed under URA's prevailing Development Control guidelines. For example, places of worship may also include columbarium as an ancillary use, while community centres may also include childcare centres. The implementation of the facilities is subject to review by the Government or competent authorities. While reasonable care has been taken in providing this information, HDB shall not be responsible in any way for any damage or loss suffered by any person whether directly or indirectly as a result of reliance on the said information or as a result of any error or omission therein.

Linear Green @ Bedok



Bedok N4 C6
Standard Flats



LEGEND:

- 3 - Room
- 4 - Room
- 5 - Room
- Surrounding Buildings
- Single Storey / Precinct Pavilion / Linkway / Pergola / Drop-Off Porch / Pavilion
- Reserved for / Existing Development
- Playground (PG) / Fitness Station
- Space for Future Social Community Facilities at 1st Storey
- Eating House (EH), Shops and Supermarket at 1st Storey
- Electrical Substation (ESS) at 1st Storey
- Multi-Storey Carpark
- Drainage Reserve
- Open Space
- Staircase
- Centralised Refuse Chute (CRC)
- Lift

The information contained herein is subject to change at any time without notice and cannot form part of an offer or contract. The proposed facilities and their locations as shown are only estimates. The proposed facilities may include other ancillary uses allowed under URA's prevailing Development Control guidelines. For example, places of worship may also include columbarium as an ancillary use, while community centres may also include childcare centres. The implementation of the facilities is subject to review by the Government or competent authorities. While reasonable care has been taken in providing this information, HDB shall not be responsible in any way for any damage or loss suffered by any person whether directly or indirectly as a result of reliance on the said information or as a result of any error or omission therein.



Window Legend:

- BW - Bay Window (approx. 1000mm high parapet wall)
- W1 - Three Quarter Height Window (approx. 700mm high parapet wall)
- W2 - Three Quarter Height Window (approx. 500mm high parapet wall)

Unless otherwise indicated all windows will be standard height windows.



2ND STOREY FLOOR PLAN
BLOCK 219A

Additional Features:

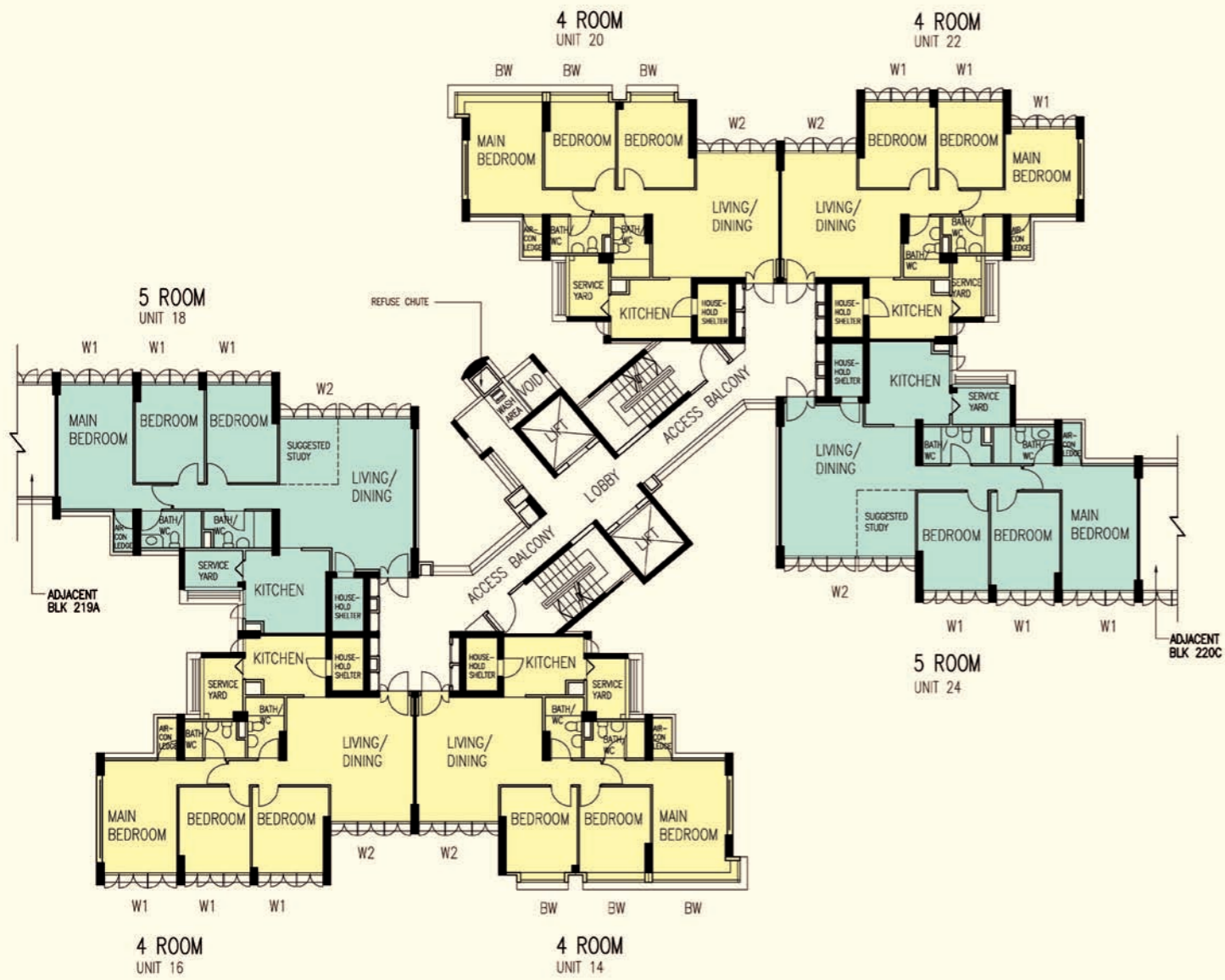
- Bedroom : Decorative Semi-Solid Timber Door (Type D7)
- Bathroom/WC : Laminated Semi-Solid Timber Door (Type D7a)
- Ceramic tiles to Kitchen/Bathroom/WC floor
- Ceramic tiles to Household Shelter floor
- Ceramic Tiles with Tiles Skirting to Service Yard floor
- Concealed Electrical Wiring & Water Supply Pipes

LEGEND:

- 3 Room
- 4 Room
- 5 Room



The coloured floor plan is not intended to demarcate the boundary of the flat.



Window Legend:
 BW - Bay Window (approx. 1000mm high parapet wall)
 W1 - Three Quarter Height Window (approx. 700mm high parapet wall)
 W2 - Three Quarter Height Window (approx. 500mm high parapet wall)

Unless otherwise indicated all windows will be standard height windows.



4TH, 7TH, 9TH, 10TH, 12TH STOREY FLOOR PLAN
 BLOCK 219B

Additional Features:

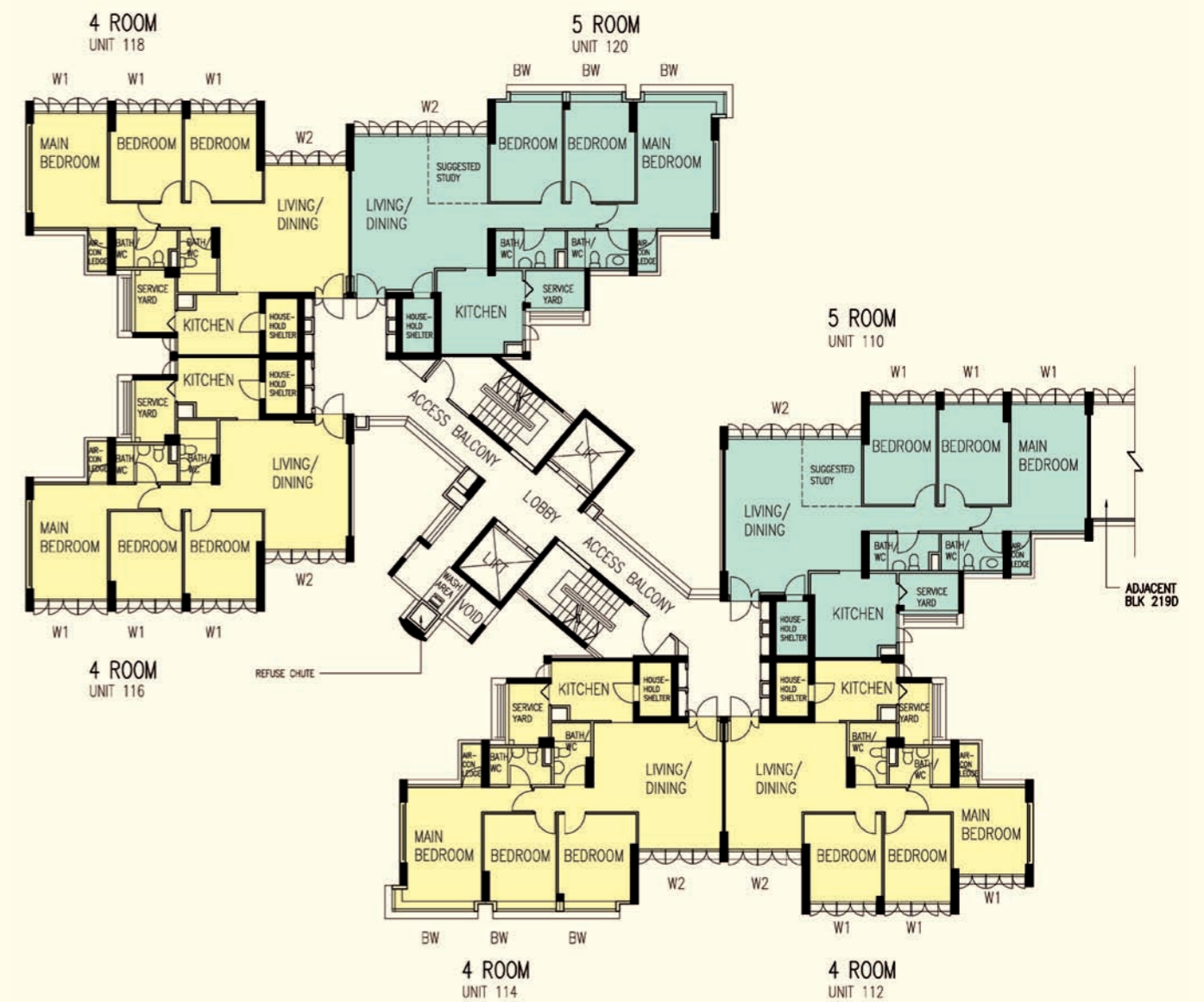
- Bedroom : Decorative Semi-Solid Timber Door (Type D7)
- Bathroom/WC : Laminated Semi-Solid Timber Door (Type D7a)
- Ceramic tiles to Kitchen/Bathroom/WC floor
- Ceramic tiles to Household Shelter floor
- Ceramic Tiles with Tiles Skirting to Service Yard floor
- Concealed Electrical Wiring & Water Supply Pipes

LEGEND:

- 3 Room
- 4 Room
- 5 Room

SCALE 0 2 4 6 8 10 METRES

The coloured floor plan is not intended to demarcate the boundary of the flat.



Window Legend:
 BW - Bay Window (approx. 1000mm high parapet wall)
 W1 - Three Quarter Height Window (approx. 700mm high parapet wall)
 W2 - Three Quarter Height Window (approx. 500mm high parapet wall)

Unless otherwise indicated all windows will be standard height windows.



3RD, 5TH, 6TH, 8TH, 11TH, 13TH, 14TH STOREY FLOOR PLAN
 BLOCK 219C

Additional Features:

- Bedroom : Decorative Semi-Solid Timber Door (Type D7)
- Bathroom/WC : Laminated Semi-Solid Timber Door (Type D7a)
- Ceramic tiles to Kitchen/Bathroom/WC floor
- Ceramic tiles to Household Shelter floor
- Ceramic Tiles with Tiles Skirting to Service Yard floor
- Concealed Electrical Wiring & Water Supply Pipes

LEGEND:

- 3 Room
- 4 Room
- 5 Room

SCALE 0 2 4 6 8 10 METRES

The coloured floor plan is not intended to demarcate the boundary of the flat.



Window Legend:
 BW - Bay Window (approx. 1000mm high parapet wall)
 W1 - Three Quarter Height Window (approx. 700mm high parapet wall)
 W2 - Three Quarter Height Window (approx. 500mm high parapet wall)

Unless otherwise indicated all windows will be standard height windows.



4TH, 7TH, 9TH, 10TH, 12TH STOREY FLOOR PLAN
 BLOCK 219C

Additional Features:

- Bedroom : Decorative Semi-Solid Timber Door (Type D7)
- Bathroom/WC : Laminated Semi-Solid Timber Door (Type D7a)
- Ceramic tiles to Kitchen/Bathroom/WC floor
- Ceramic tiles to Household Shelter floor
- Ceramic Tiles with Tiles Skirting to Service Yard floor
- Concealed Electrical Wiring & Water Supply Pipes

LEGEND:

- 3 Room
- 4 Room
- 5 Room

SCALE 0 2 4 6 8 10 METRES

The coloured floor plan is not intended to demarcate the boundary of the flat.



Window Legend:
 BW - Bay Window (approx. 1000mm high parapet wall)
 W1 - Three Quarter Height Window (approx. 700mm high parapet wall)
 W2 - Three Quarter Height Window (approx. 500mm high parapet wall)

Unless otherwise indicated all windows will be standard height windows.



4TH, 7TH, 9TH, 10TH, 12TH STOREY FLOOR PLAN
 BLOCK 219D

Additional Features:

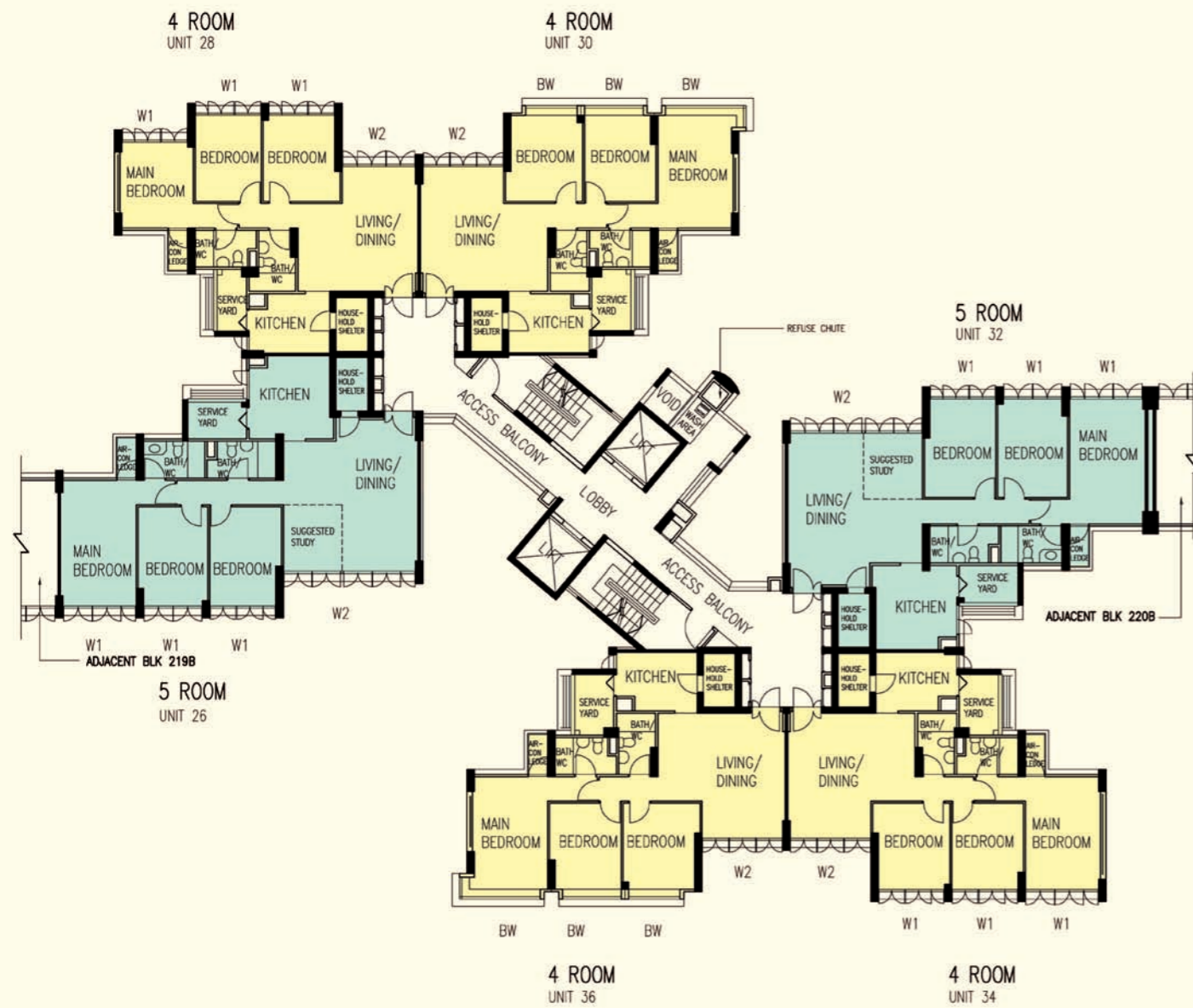
- Bedroom : Decorative Semi-Solid Timber Door (Type D7)
- Bathroom/WC : Laminated Semi-Solid Timber Door (Type D7a)
- Ceramic tiles to Kitchen/Bathroom/WC floor
- Ceramic tiles to Household Shelter floor
- Ceramic Tiles with Tiles Skirting to Service Yard floor
- Concealed Electrical Wiring & Water Supply Pipes

LEGEND:

- 3 Room
- 4 Room
- 5 Room

SCALE 0 2 4 6 8 10 METRES

The coloured floor plan is not intended to demarcate the boundary of the flat.



Window Legend:
 BW - Bay Window (approx. 1000mm high parapet wall)
 W1 - Three Quarter Height Window (approx. 700mm high parapet wall)
 W2 - Three Quarter Height Window (approx. 500mm high parapet wall)

Unless otherwise indicated all windows will be standard height windows.



3RD, 5TH, 6TH, 8TH, 11TH, 13TH, 14TH STOREY FLOOR PLAN
 BLOCK 220C

Additional Features:

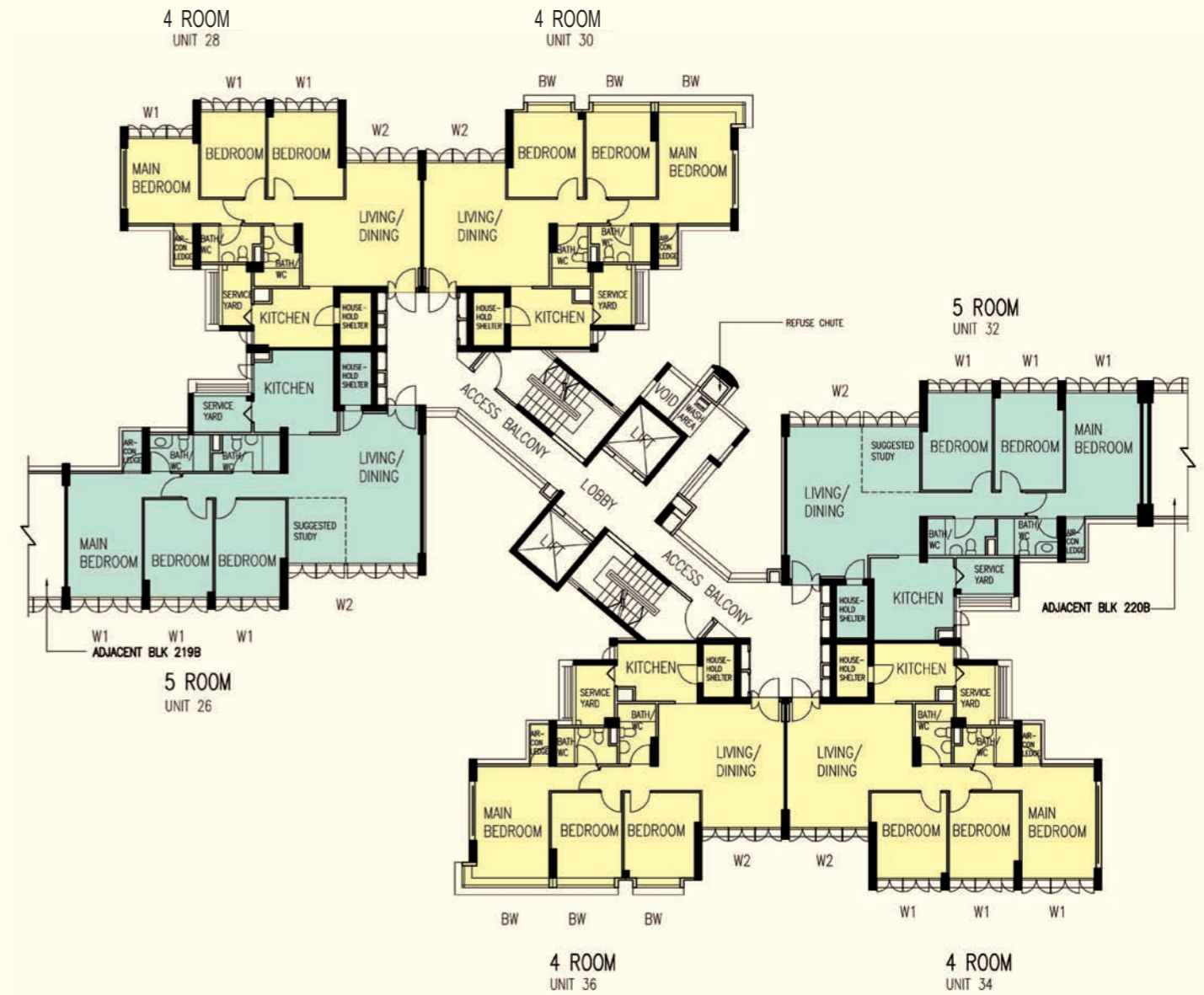
- Bedroom : Decorative Semi-Solid Timber Door (Type D7)
- Bathroom/WC : Laminated Semi-Solid Timber Door (Type D7a)
- Ceramic tiles to Kitchen/Bathroom/WC floor
- Ceramic tiles to Household Shelter floor
- Ceramic Tiles with Tiles Skirting to Service Yard floor
- Concealed Electrical Wiring & Water Supply Pipes

LEGEND:

- 3 Room
- 4 Room
- 5 Room

SCALE 0 2 4 6 8 10 METRES

The coloured floor plan is not intended to demarcate the boundary of the flat.



Window Legend:
 BW - Bay Window (approx. 1000mm high parapet wall)
 W1 - Three Quarter Height Window (approx. 700mm high parapet wall)
 W2 - Three Quarter Height Window (approx. 500mm high parapet wall)

Unless otherwise indicated all windows will be standard height windows.



4TH, 7TH, 9TH, 10TH, 12TH STOREY FLOOR PLAN
 BLOCK 220C

Additional Features:

- Bedroom : Decorative Semi-Solid Timber Door (Type D7)
- Bathroom/WC : Laminated Semi-Solid Timber Door (Type D7a)
- Ceramic tiles to Kitchen/Bathroom/WC floor
- Ceramic tiles to Household Shelter floor
- Ceramic Tiles with Tiles Skirting to Service Yard floor
- Concealed Electrical Wiring & Water Supply Pipes

LEGEND:

- 3 Room
- 4 Room
- 5 Room

SCALE 0 2 4 6 8 10 METRES

The coloured floor plan is not intended to demarcate the boundary of the flat.



Window Legend:
 BW - Bay Window (approx. 1000mm high parapet wall)
 W1 - Three Quarter Height Window (approx. 700mm high parapet wall)
 W2 - Three Quarter Height Window (approx. 500mm high parapet wall)

Unless otherwise indicated all windows will be standard height windows.



4TH, 7TH, 9TH, 10TH, 12TH STOREY FLOOR PLAN
 BLOCK 221A

Additional Features:

- Bedroom : Decorative Semi-Solid Timber Door (Type D7)
- Bathroom/WC : Laminated Semi-Solid Timber Door (Type D7a)
- Ceramic tiles to Kitchen/Bathroom/WC floor
- Ceramic tiles to Household Shelter floor
- Ceramic Tiles with Tiles Skirting to Service Yard floor
- Concealed Electrical Wiring & Water Supply Pipes

LEGEND:

- 3 Room
- 4 Room
- 5 Room

SCALE 0 2 4 6 8 10 METRES

The coloured floor plan is not intended to demarcate the boundary of the flat.



Window Legend:
 BW - Bay Window (approx. 1000mm high parapet wall)
 W1 - Three Quarter Height Window (approx. 700mm high parapet wall)
 W2 - Three Quarter Height Window (approx. 500mm high parapet wall)

Unless otherwise indicated all windows will be standard height windows.



16TH STOREY FLOOR PLAN
 BLOCK 221A

Additional Features:

- Bedroom : Decorative Semi-Solid Timber Door (Type D7)
- Bathroom/WC : Laminated Semi-Solid Timber Door (Type D7a)
- Ceramic tiles to Kitchen/Bathroom/WC floor
- Ceramic tiles to Household Shelter floor
- Ceramic Tiles with Tiles Skirting to Service Yard floor
- Concealed Electrical Wiring & Water Supply Pipes

LEGEND:

- 3 Room
- 4 Room
- 5 Room

SCALE 0 2 4 6 8 10 METRES

The coloured floor plan is not intended to demarcate the boundary of the flat.



Window Legend:
 BW - Bay Window (approx. 1000mm high parapet wall)
 W1 - Three Quarter Height Window (approx. 700mm high parapet wall)
 W2 - Three Quarter Height Window (approx. 500mm high parapet wall)

Unless otherwise indicated all windows will be standard height windows.



3RD, 5TH, 6TH, 8TH, 11TH, 13TH, 14TH STOREY FLOOR PLAN BLOCK 221B

Additional Features:

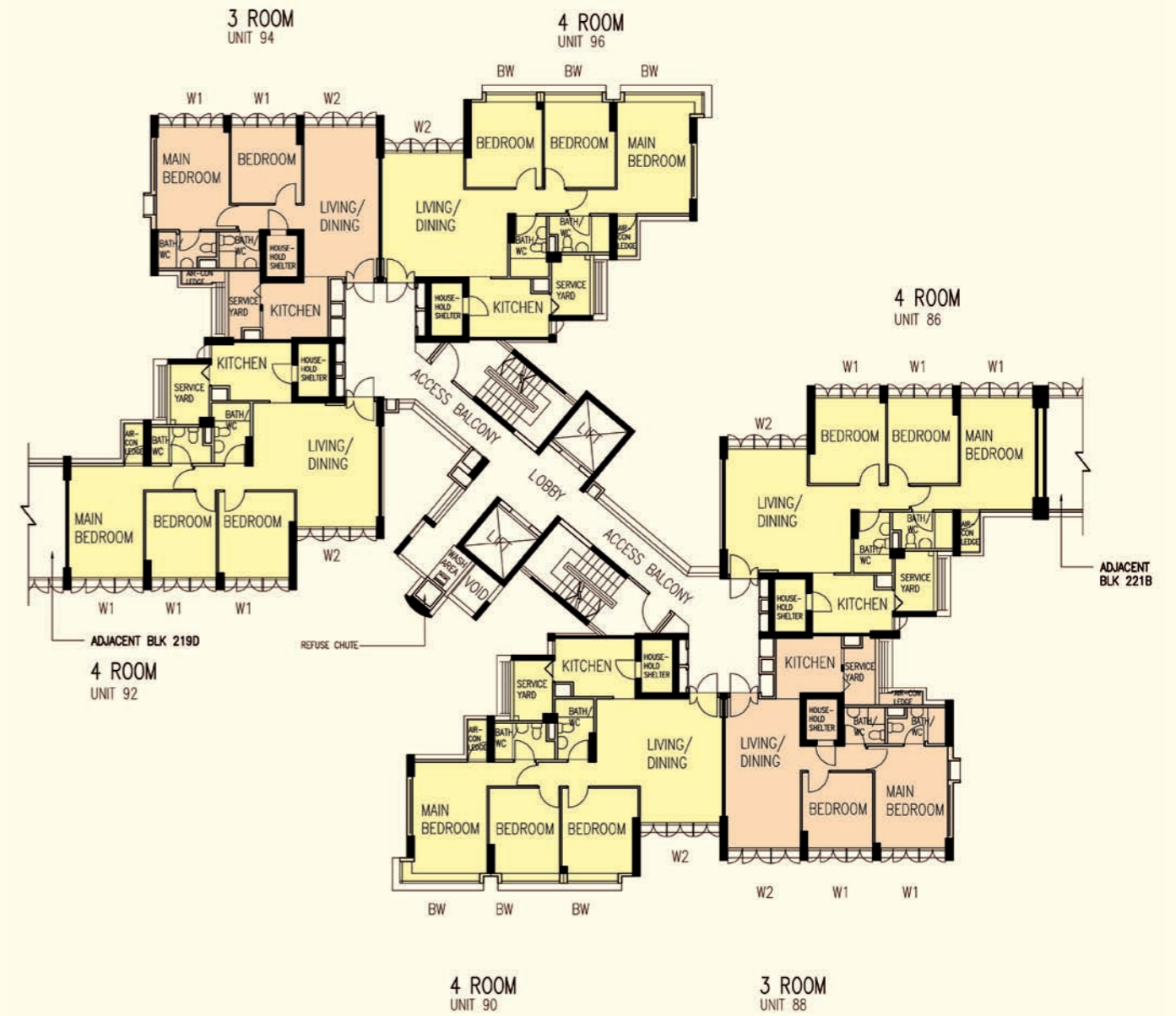
- Bedroom : Decorative Semi-Solid Timber Door (Type D7)
- Bathroom/WC : Laminated Semi-Solid Timber Door (Type D7a)
- Ceramic tiles to Kitchen/Bathroom/WC floor
- Ceramic tiles to Household Shelter floor
- Ceramic Tiles with Tiles Skirting to Service Yard floor
- Concealed Electrical Wiring & Water Supply Pipes

LEGEND:

- 3 Room
- 4 Room
- 5 Room

SCALE 0 2 4 6 8 10 METRES

The coloured floor plan is not intended to demarcate the boundary of the flat.



Window Legend:
 BW - Bay Window (approx. 1000mm high parapet wall)
 W1 - Three Quarter Height Window (approx. 700mm high parapet wall)
 W2 - Three Quarter Height Window (approx. 500mm high parapet wall)

Unless otherwise indicated all windows will be standard height windows.



3RD, 5TH, 6TH, 8TH, 11TH, 13TH, 14TH STOREY FLOOR PLAN BLOCK 221C

Additional Features:

- Bedroom : Decorative Semi-Solid Timber Door (Type D7)
- Bathroom/WC : Laminated Semi-Solid Timber Door (Type D7a)
- Ceramic tiles to Kitchen/Bathroom/WC floor
- Ceramic tiles to Household Shelter floor
- Ceramic Tiles with Tiles Skirting to Service Yard floor
- Concealed Electrical Wiring & Water Supply Pipes

LEGEND:

- 3 Room
- 4 Room
- 5 Room

SCALE 0 2 4 6 8 10 METRES

The coloured floor plan is not intended to demarcate the boundary of the flat.



Window Legend:
 BW - Bay Window (approx. 1000mm high parapet wall)
 W1 - Three Quarter Height Window (approx. 700mm high parapet wall)
 W2 - Three Quarter Height Window (approx. 500mm high parapet wall)

Unless otherwise indicated all windows will be standard height windows.

4TH, 7TH, 9TH, 10TH 12TH STOREY FLOOR PLAN BLOCK 221C

Additional Features:

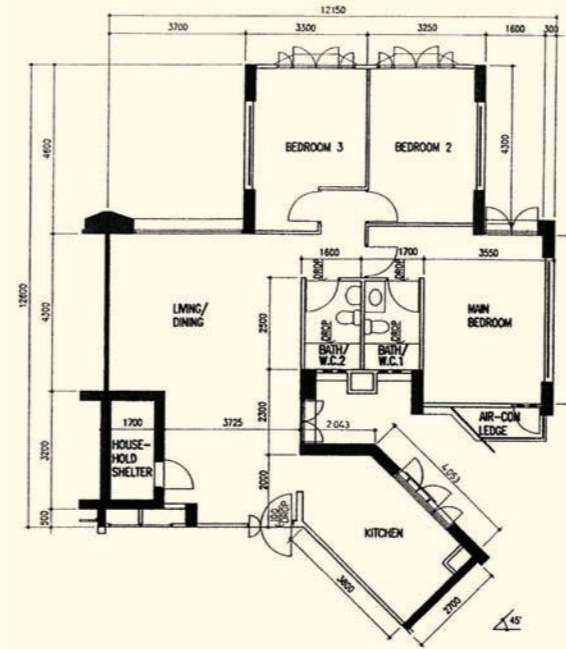
- Bedroom : Decorative Semi-Solid Timber Door (Type D7)
- Bathroom/WC : Laminated Semi-Solid Timber Door (Type D7a)
- Ceramic tiles to Kitchen/Bathroom/WC floor
- Ceramic tiles to Household Shelter floor
- Ceramic Tiles with Tiles Skirting to Service Yard floor
- Concealed Electrical Wiring & Water Supply Pipes

LEGEND:

- 3 Room
- 4 Room
- 5 Room

SCALE 0 2 4 6 8 10 METRES

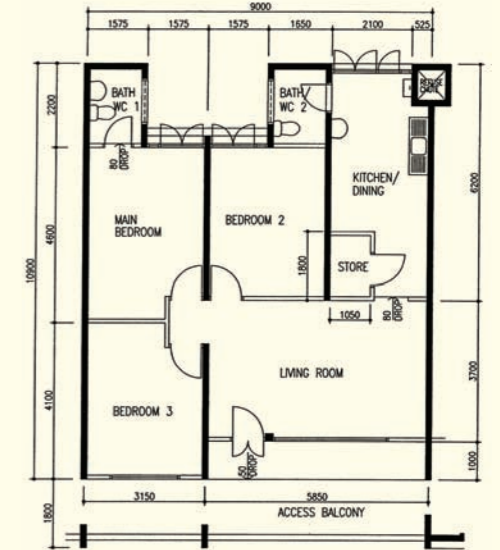
The coloured floor plan is not intended to demarcate the boundary of the flat.



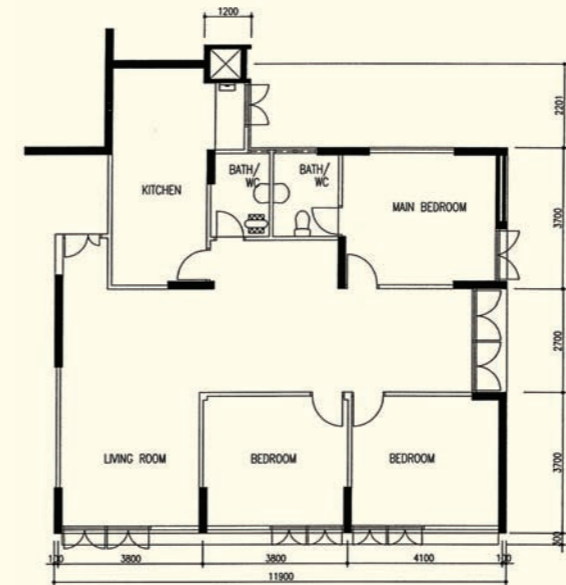
**5 - Room
 Vista 8**
 BD N1 C19
 Block 181, #09-20

Additional Features:

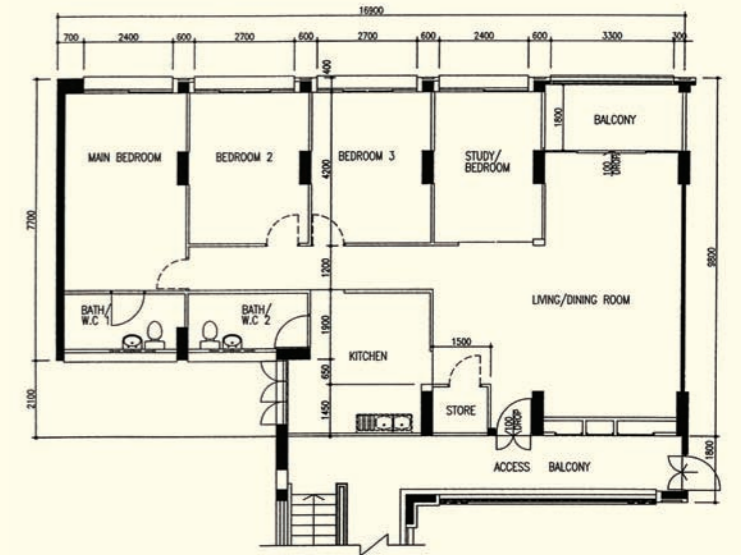
- Bedroom/Bathroom/WC : Decorative Timber Door (Type D1)
- Concealed Electrical Wiring & Water Supply Pipes



**4 - Room
 BD N2 C1**
 Block 159, #07-557**

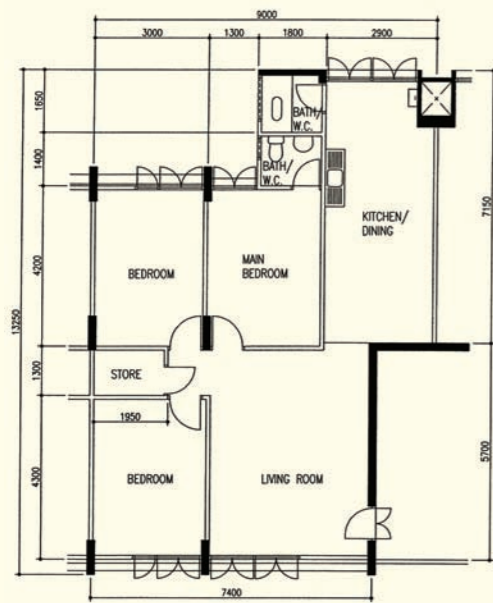


**5 - Room
 BD N2 C7**
 Block 72, #02-450**

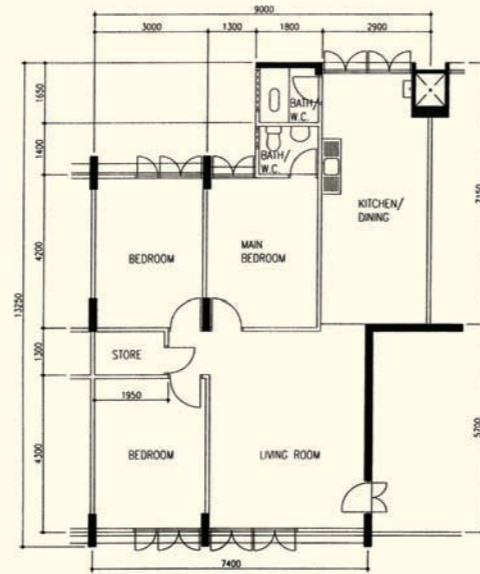


**Executive
 BD N3 RC5**
 Block 94C, #14-1395**

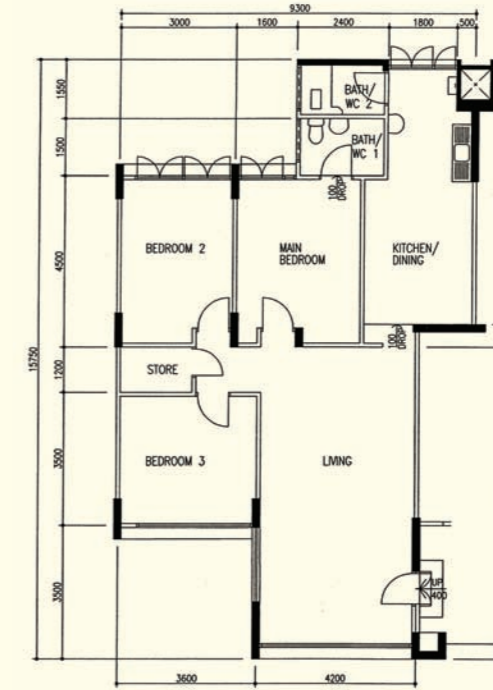
**This is a Repurchased Flat
 Photographs and the revised floor plan (if any) can be viewed at www.hdb.gov.sg/esales



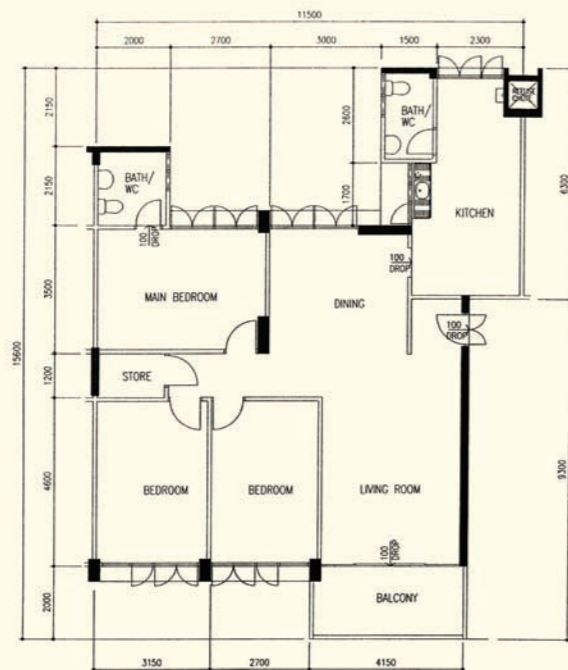
4 - Room
Kaki Bukit Green
 BD N5 C7
 Block 513, #11-275**



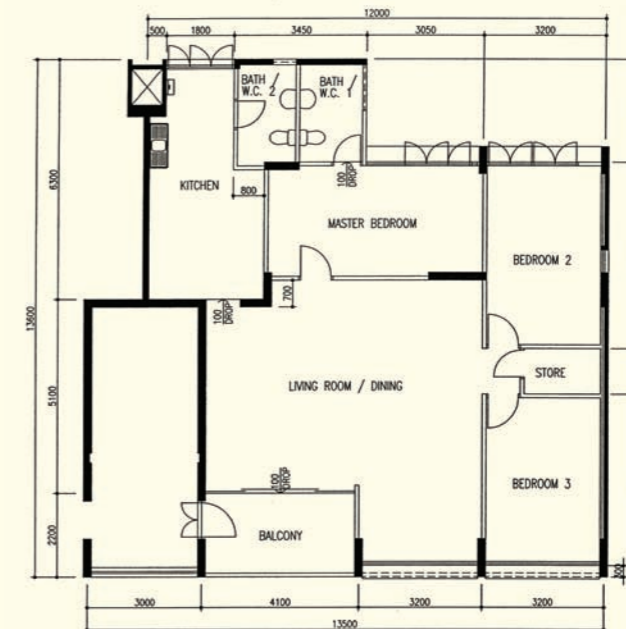
4 - Room
Bedok North Green
 BD N5 C14
 Block 543, #09-1312**



4 - Room
 BD N8 C9
 Block 59, #03-880**



5 - Room
 BD N6 C5
 Block 621, #05-1476**



5 - Room
 BD N8 C10
 Block 62, #04-826**

**This is a Repurchased Flat
 Photographs and the revised floor plan (if any) can be viewed at www.hdb.gov.sg/esales

**This is a Repurchased Flat
 Photographs and the revised floor plan (if any) can be viewed at www.hdb.gov.sg/esales