

ANG MO KIO Town Map



- LEGEND:**
- Contracts with Standard Flats
 - MRT Line & Station
 - (u/c) Under Construction

Notes:
 All proposed developments are subject to change and planning approval.
 Proposed Place of Worship includes examples like Church, Mosque, Chinese Temple, Hindu Temple, etc., subject to change and planning approval.



The information contained herein is subject to change at any time without notice and cannot form part of an offer or contract. The proposed facilities and their locations as shown are only estimates. The proposed facilities may include other ancillary uses allowed under URA's prevailing Development Control guidelines. For example, places of worship may also include columbarium as an ancillary use, while community centres may also include childcare centres. The implementation of the facilities is subject to review by the Government or competent authorities. While reasonable care has been taken in providing this information, HDB shall not be responsible in any way for any damage or loss suffered by any person whether directly or indirectly as a result of reliance on the said information or as a result of any error or omission therein.

Teck Ghee Vista



Ang Mo Kio N3 RC10 Standard Flats

LEGEND:

- Studio Apartment
- 3-Room
- 4-Room
- 5-Room
- Surrounding Buildings
- Reserved for / Existing Development
- Linkway / Precinct Pavilion / Drop-Off Porch / Shelter
- Pergola
- Linkbridge (LB) at 2nd Storey
- Future Community Facilities (FCF) at 1st Storey
- Playground (PG) / Hard Court (HC) / Adult Fitness Station (AFS) / Elderly Wellness Station (EWS)
- Electrical Substation (ESS) at 1st Storey
- Utility Centre (UC) at 1st Storey
- Community Mall
- Carparking
- Open Space
- Staircase
- Service Bay
- Centralised Refuse Chute (CRC)
- Lift

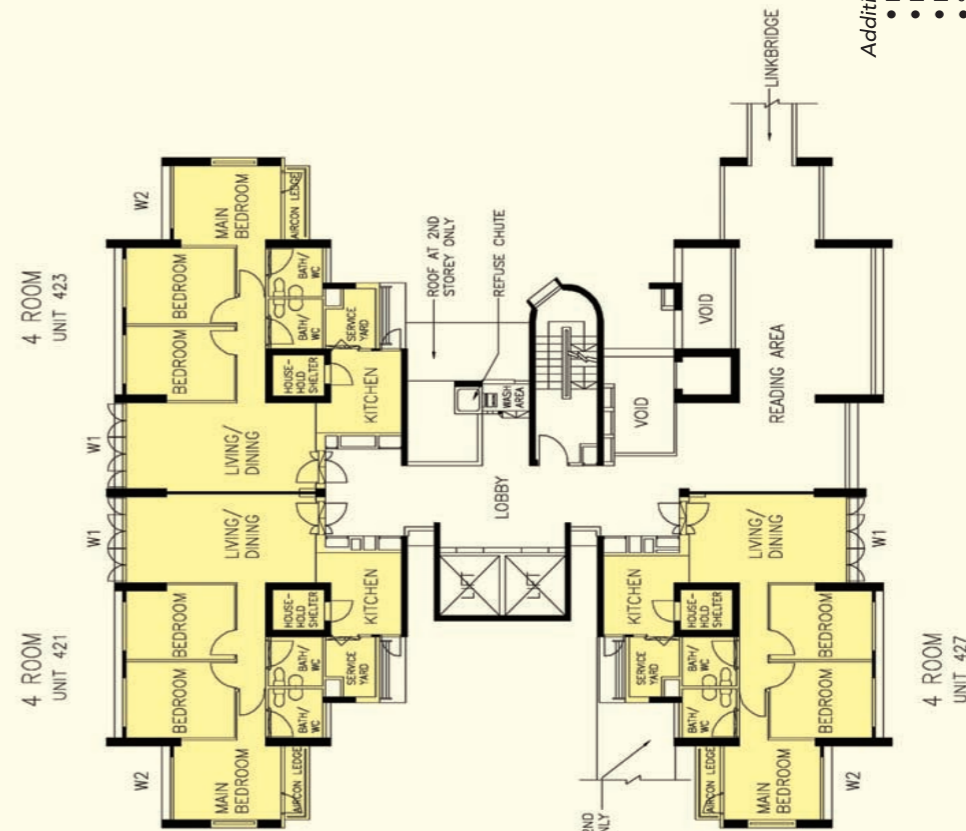
Scale 0 20 40 60 Metres



Artist's Impression



The information contained herein is subject to change at any time without notice and cannot form part of an offer or contract. The proposed facilities and their locations as shown are only estimates. The proposed facilities may include other ancillary uses allowed under URA's prevailing Development Control guidelines. For example, places of worship may also include columbarium as an ancillary use, while community centres may also include childcare centres. The implementation of the facilities is subject to review by the Government or competent authorities. While reasonable care has been taken in providing this information, HDB shall not be responsible in any way for any damage or loss suffered by any person whether directly or indirectly as a result of reliance on the said information or as a result of any error or omission therein.



Additional Features:

- Bedroom : Decorative Semi-Solid Timber Door (Type D9)
- Bathroom/WC : Laminated Semi-Solid Timber Door (Type D9a)
- Kitchen/Bathroom/WC Floor : Ceramic Tiles
- Service Yard Floor : Ceramic Tiles with Tile Skirting
- Household Shelter Floor : Ceramic Tiles
- Vanity Top Wash Basin at Bathroom/WC of Main Bedroom for 5-Room Flats
- Concealed Electrical Wiring & Water Supply Pipes

2ND STOREY FLOOR PLAN BLOCK 307A



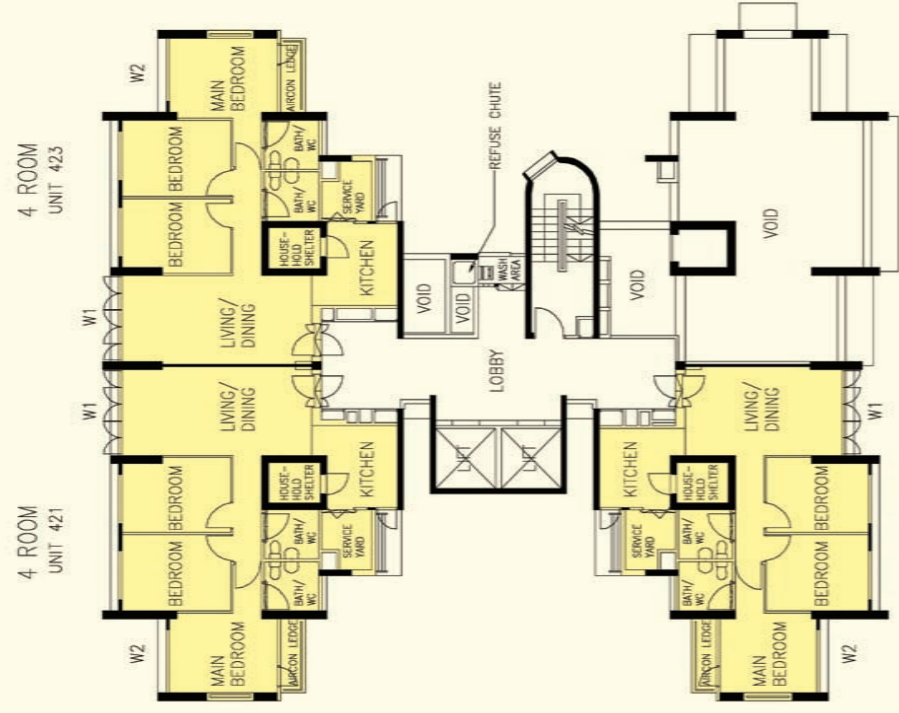
The coloured floor plan is not intended to demarcate the boundary of the flat.

- Studio Apt. (Type A)
- Studio Apt. (Type B)
- 3 Room
- 4 Room
- 5 Room

W1 - Three Quarter Height Window (approx. 500mm high parapet wall)
W2 - Three Quarter Height Window (approx. 700mm high parapet wall)

Unless otherwise indicated all windows will be standard height windows.

SCALE 0 2 4 6 8 10 METRES



LEGEND:

- Studio Apt. (Type A)
- Studio Apt. (Type B)
- 3 Room
- 4 Room
- 5 Room

W1 - Three Quarter Height Window (approx. 500mm high parapet wall)
 W2 - Three Quarter Height Window (approx. 700mm high parapet wall)

Unless otherwise indicated all windows will be standard height windows.



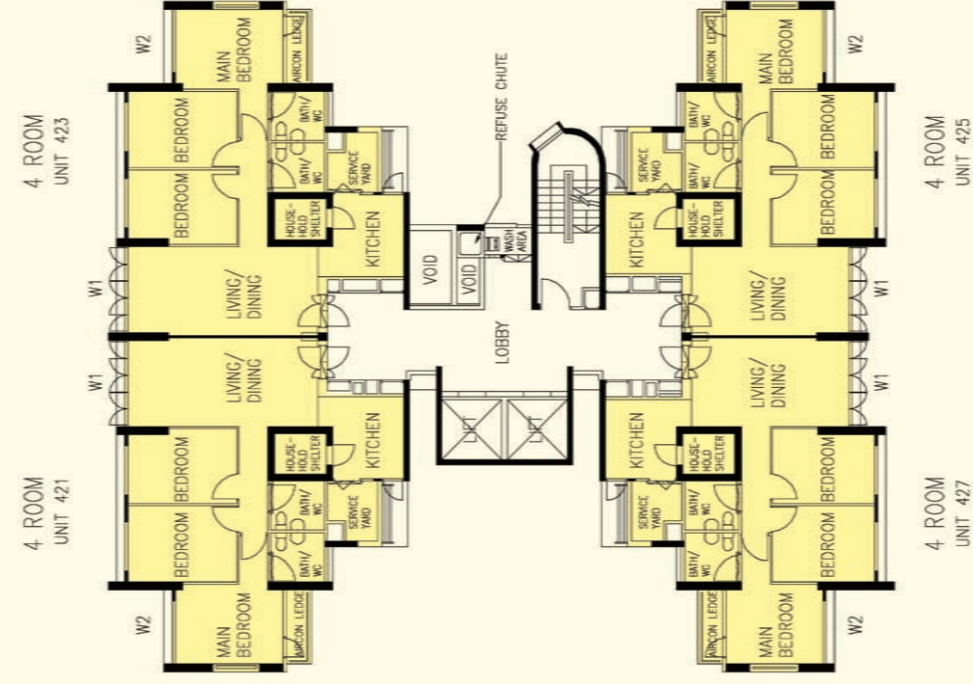
3RD STOREY FLOOR PLAN BLOCK 307A



The coloured floor plan is not intended to demarcate the boundary of the flat.

Additional Features:

- Bedroom : Decorative Semi-Solid Timber Door (Type D9)
- Bathroom/WC : Laminated Semi-Solid Timber Door (Type D9a)
- Kitchen/Bathroom/WC Floor : Ceramic Tiles
- Service Yard Floor : Ceramic Tiles with Tile Skirting
- Household Shelter Floor : Ceramic Tiles
- Vanity Top Wash Basin at Bathroom/WC of Main Bedroom for 5-Room Flats
- Concealed Electrical Wiring & Water Supply Pipes



LEGEND:

- Studio Apt. (Type A)
- Studio Apt. (Type B)
- 3 Room
- 4 Room
- 5 Room

W1 - Three Quarter Height Window (approx. 500mm high parapet wall)
 W2 - Three Quarter Height Window (approx. 700mm high parapet wall)

Unless otherwise indicated all windows will be standard height windows.



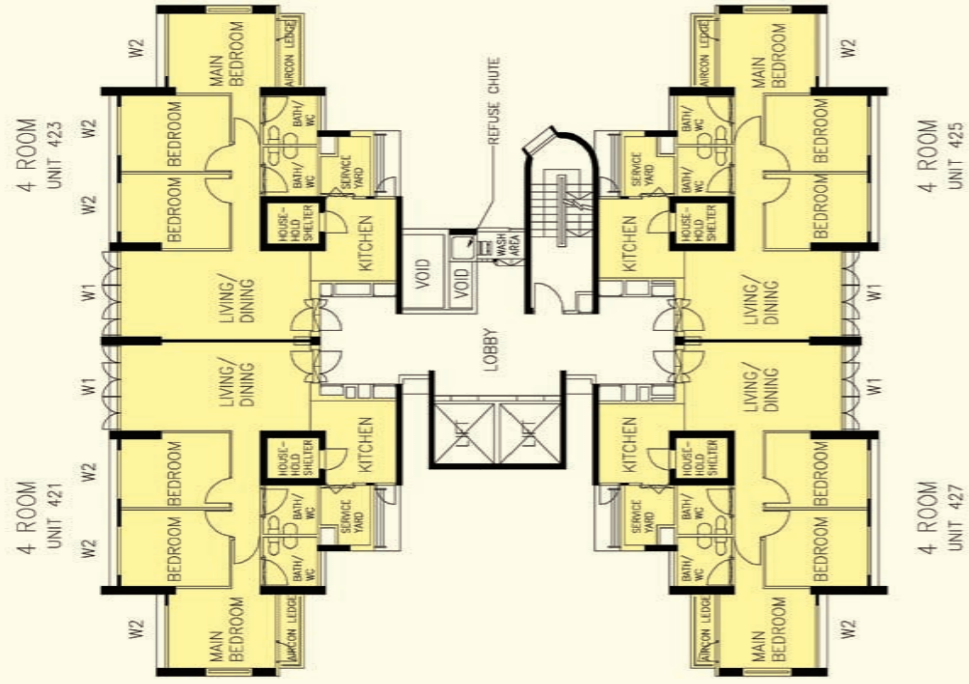
4TH TO 6TH STOREY FLOOR PLAN BLOCK 307A



The coloured floor plan is not intended to demarcate the boundary of the flat.

Additional Features:

- Bedroom : Decorative Semi-Solid Timber Door (Type D9)
- Bathroom/WC : Laminated Semi-Solid Timber Door (Type D9a)
- Kitchen/Bathroom/WC Floor : Ceramic Tiles
- Service Yard Floor : Ceramic Tiles with Tile Skirting
- Household Shelter Floor : Ceramic Tiles
- Vanity Top Wash Basin at Bathroom/WC of Main Bedroom for 5-Room Flats
- Concealed Electrical Wiring & Water Supply Pipes



LEGEND:

- Studio Apt. (Type A)
- Studio Apt. (Type B)
- 3 Room
- 4 Room
- 5 Room

W1 - Three Quarter Height Window (approx. 500mm high parapet wall)
 W2 - Three Quarter Height Window (approx. 700mm high parapet wall)

Unless otherwise indicated all windows will be standard height windows.

SCALE 0 2 4 6 8 10 METRES

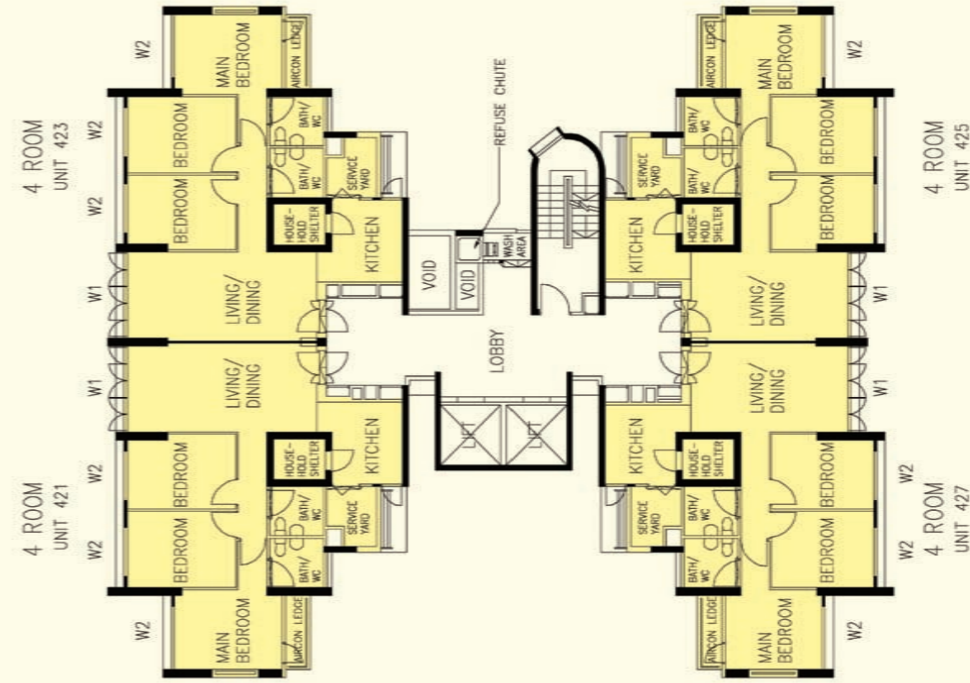
The coloured floor plan is not intended to demarcate the boundary of the flat.



7TH TO 9TH STOREY FLOOR PLAN BLOCK 307A

Additional Features:

- Bedroom : Decorative Semi-Solid Timber Door (Type D9)
- Bathroom/WC : Laminated Semi-Solid Timber Door (Type D9a)
- Kitchen/Bathroom/WC Floor : Ceramic Tiles
- Service Yard Floor : Ceramic Tiles with Tile Skirting
- Household Shelter Floor : Ceramic Tiles
- Vanity Top Wash Basin at Bathroom/WC of Main Bedroom for 5-Room Flats
- Concealed Electrical Wiring & Water Supply Pipes



LEGEND:

- Studio Apt. (Type A)
- Studio Apt. (Type B)
- 3 Room
- 4 Room
- 5 Room

W1 - Three Quarter Height Window (approx. 500mm high parapet wall)
 W2 - Three Quarter Height Window (approx. 700mm high parapet wall)

Unless otherwise indicated all windows will be standard height windows.

SCALE 0 2 4 6 8 10 METRES

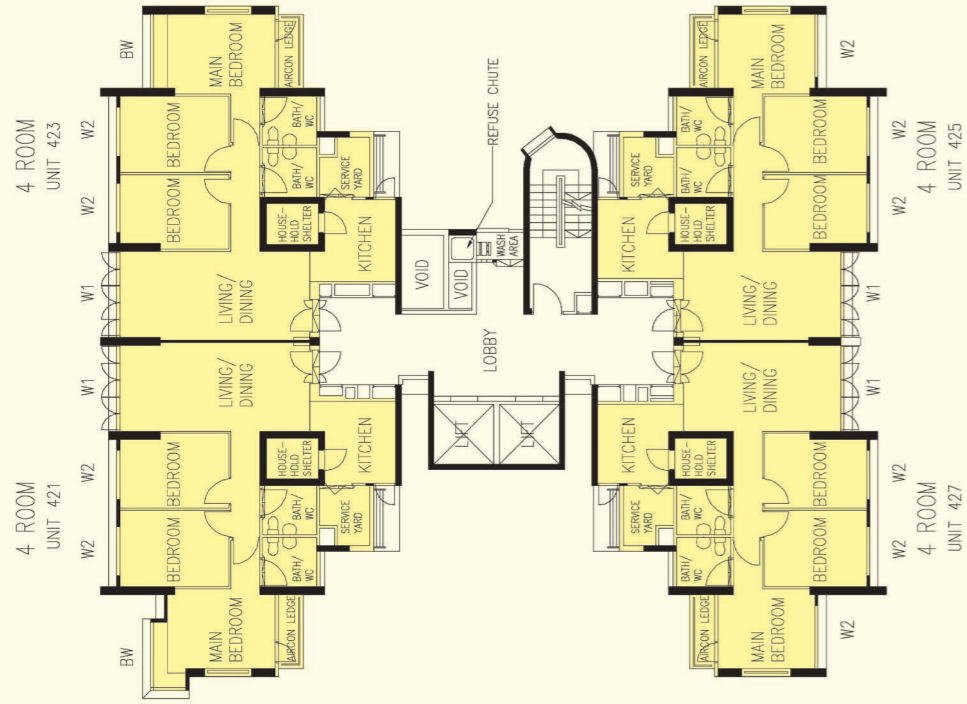
The coloured floor plan is not intended to demarcate the boundary of the flat.



10TH TO 15TH STOREY FLOOR PLAN BLOCK 307A

Additional Features:

- Bedroom : Decorative Semi-Solid Timber Door (Type D9)
- Bathroom/WC : Laminated Semi-Solid Timber Door (Type D9a)
- Kitchen/Bathroom/WC Floor : Ceramic Tiles
- Service Yard Floor : Ceramic Tiles with Tile Skirting
- Household Shelter Floor : Ceramic Tiles
- Vanity Top Wash Basin at Bathroom/WC of Main Bedroom for 5-Room Flats
- Concealed Electrical Wiring & Water Supply Pipes



LEGEND:

- Studio Apt. (Type A)
- Studio Apt. (Type B)
- 3 Room
- 4 Room
- 5 Room

- W1 - Three Quarter Height Window (approx. 500mm high parapet wall)
- W2 - Three Quarter Height Window (approx. 700mm high parapet wall)
- BW - Bay Window

Unless otherwise indicated all windows will be standard height windows.



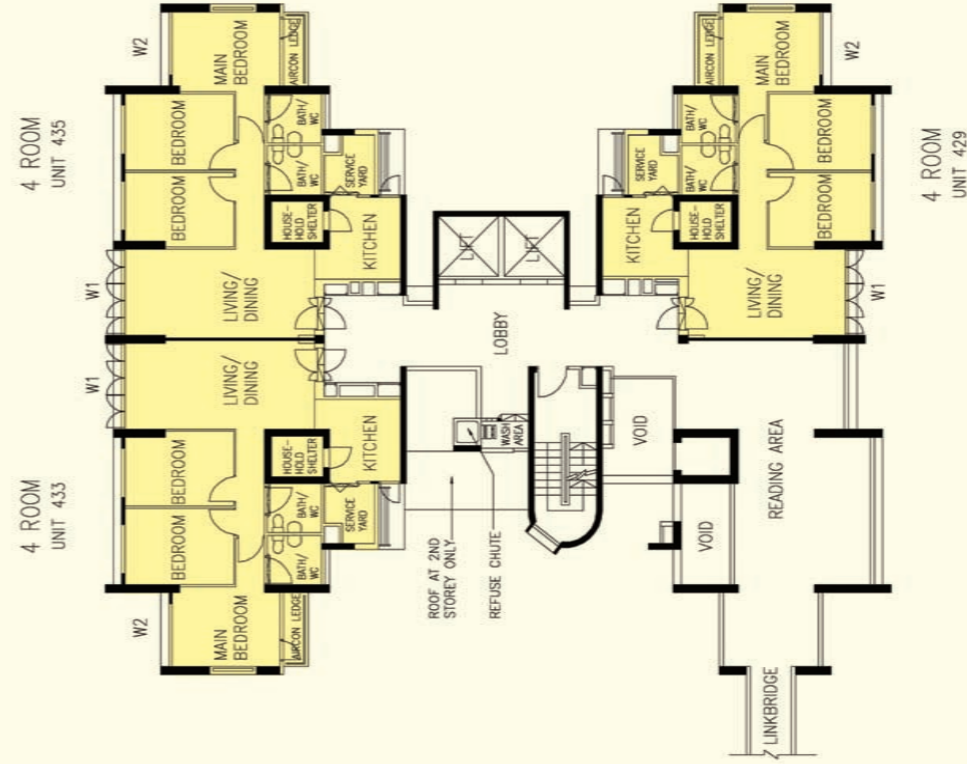
16TH TO 20TH STOREY FLOOR PLAN BLOCK 307A

The coloured floor plan is not intended to demarcate the boundary of the flat.



Additional Features:

- Bedroom : Decorative Semi-Solid Timber Door (Type D9)
- Bathroom/WC : Laminated Semi-Solid Timber Door (Type D9a)
- Kitchen/Bathroom/WC Floor : Ceramic Tiles
- Service Yard Floor : Ceramic Tiles with Tile Skirting
- Household Shelter Floor : Ceramic Tiles
- Vanity Top Wash Basin at Bathroom/WC of Main Bedroom for 5-Room Flats
- Concealed Electrical Wiring & Water Supply Pipes



LEGEND:

- Studio Apt. (Type A)
- Studio Apt. (Type B)
- 3 Room
- 4 Room
- 5 Room

- W1 - Three Quarter Height Window (approx. 500mm high parapet wall)
- W2 - Three Quarter Height Window (approx. 700mm high parapet wall)

Unless otherwise indicated all windows will be standard height windows.



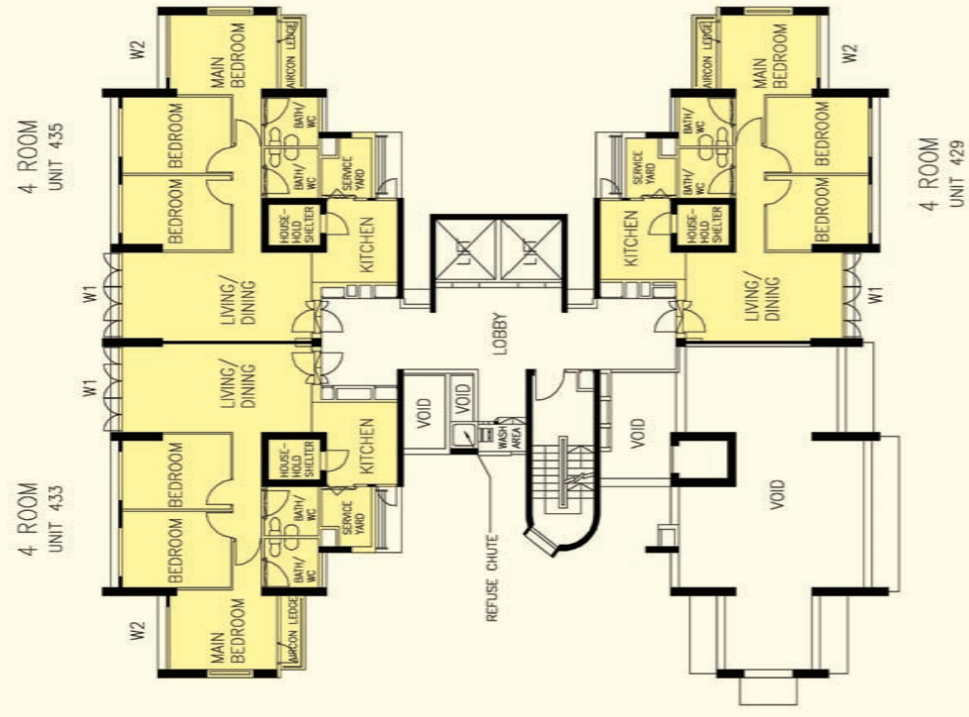
2ND STOREY FLOOR PLAN BLOCK 307B

The coloured floor plan is not intended to demarcate the boundary of the flat.



Additional Features:

- Bedroom : Decorative Semi-Solid Timber Door (Type D9)
- Bathroom/WC : Laminated Semi-Solid Timber Door (Type D9a)
- Kitchen/Bathroom/WC Floor : Ceramic Tiles
- Service Yard Floor : Ceramic Tiles with Tile Skirting
- Household Shelter Floor : Ceramic Tiles
- Vanity Top Wash Basin at Bathroom/WC of Main Bedroom for 5-Room Flats
- Concealed Electrical Wiring & Water Supply Pipes



- LEGEND:**
- Studio Apt. (Type A)
 - Studio Apt. (Type B)
 - 3 Room
 - 4 Room
 - 5 Room

W1 - Three Quarter Height Window (approx. 500mm high parapet wall)
 W2 - Three Quarter Height Window (approx. 700mm high parapet wall)

Unless otherwise indicated all windows will be standard height windows.



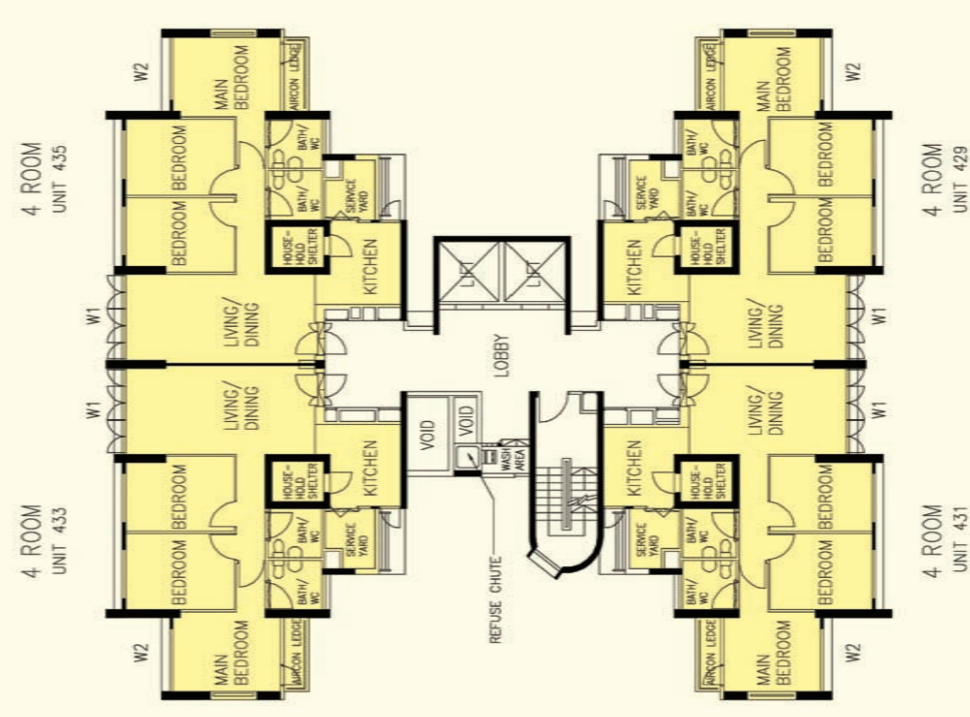
3RD STOREY FLOOR PLAN BLOCK 307B

The coloured floor plan is not intended to demarcate the boundary of the flat.



Additional Features:

- Bedroom : Decorative Semi-Solid Timber Door (Type D9)
- Bathroom/WC : Laminated Semi-Solid Timber Door (Type D9a)
- Kitchen/Bathroom/WC Floor : Ceramic Tiles
- Service Yard Floor : Ceramic Tiles with Tile Skirting
- Household Shelter Floor : Ceramic Tiles
- Vanity Top Wash Basin at Bathroom/WC of Main Bedroom for 5-Room Flats
- Concealed Electrical Wiring & Water Supply Pipes



- LEGEND:**
- Studio Apt. (Type A)
 - Studio Apt. (Type B)
 - 3 Room
 - 4 Room
 - 5 Room

W1 - Three Quarter Height Window (approx. 500mm high parapet wall)
 W2 - Three Quarter Height Window (approx. 700mm high parapet wall)

Unless otherwise indicated all windows will be standard height windows.



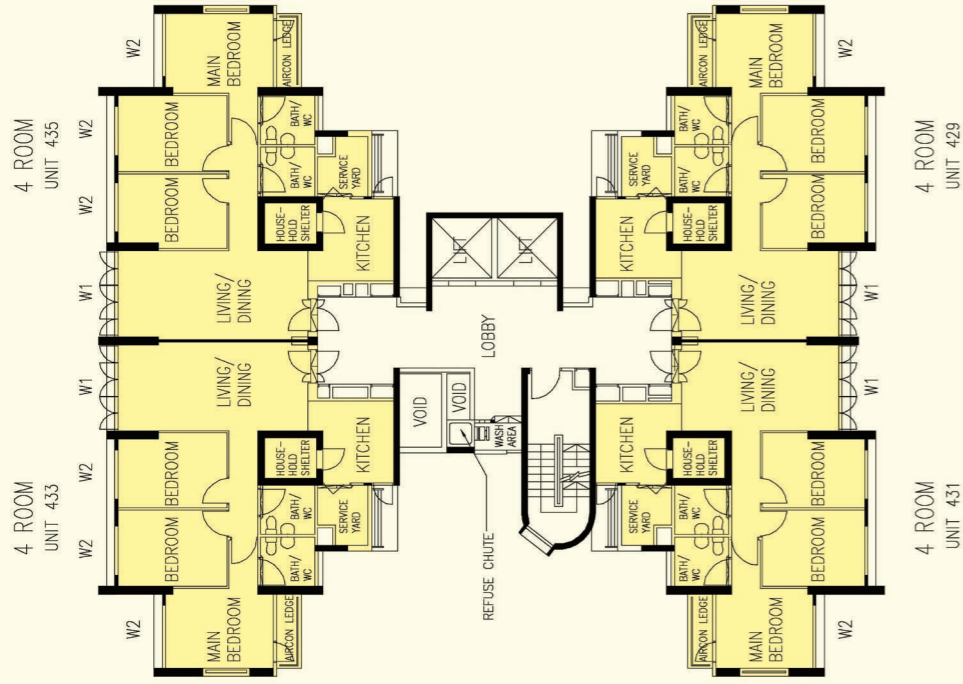
4TH TO 6TH STOREY FLOOR PLAN BLOCK 307B

The coloured floor plan is not intended to demarcate the boundary of the flat.



Additional Features:

- Bedroom : Decorative Semi-Solid Timber Door (Type D9)
- Bathroom/WC : Laminated Semi-Solid Timber Door (Type D9a)
- Kitchen/Bathroom/WC Floor : Ceramic Tiles
- Service Yard Floor : Ceramic Tiles with Tile Skirting
- Household Shelter Floor : Ceramic Tiles
- Vanity Top Wash Basin at Bathroom/WC of Main Bedroom for 5-Room Flats
- Concealed Electrical Wiring & Water Supply Pipes



- LEGEND:**
- Studio Apt. (Type A)
 - Studio Apt. (Type B)
 - 3 Room
 - 4 Room
 - 5 Room

W1 - Three Quarter Height Window (approx. 500mm high parapet wall)
 W2 - Three Quarter Height Window (approx. 700mm high parapet wall)

Unless otherwise indicated all windows will be standard height windows.



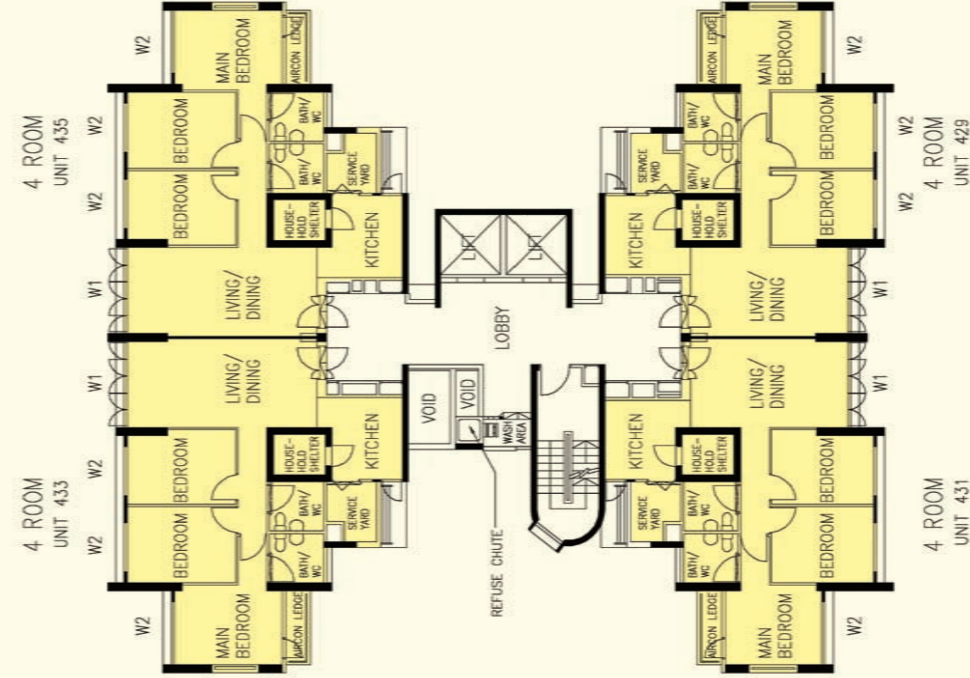
7TH TO 9TH STOREY FLOOR PLAN BLOCK 307B



The coloured floor plan is not intended to demarcate the boundary of the flat.

Additional Features:

- Bedroom : Decorative Semi-Solid Timber Door (Type D9)
- Bathroom/WC : Laminated Semi-Solid Timber Door (Type D9a)
- Kitchen/Bathroom/WC Floor : Ceramic Tiles
- Service Yard Floor : Ceramic Tiles with Tile Skirting
- Household Shelter Floor : Ceramic Tiles
- Vanity Top Wash Basin at Bathroom/WC of Main Bedroom for 5-Room Flats
- Concealed Electrical Wiring & Water Supply Pipes



- LEGEND:**
- Studio Apt. (Type A)
 - Studio Apt. (Type B)
 - 3 Room
 - 4 Room
 - 5 Room

W1 - Three Quarter Height Window (approx. 500mm high parapet wall)
 W2 - Three Quarter Height Window (approx. 700mm high parapet wall)

Unless otherwise indicated all windows will be standard height windows.



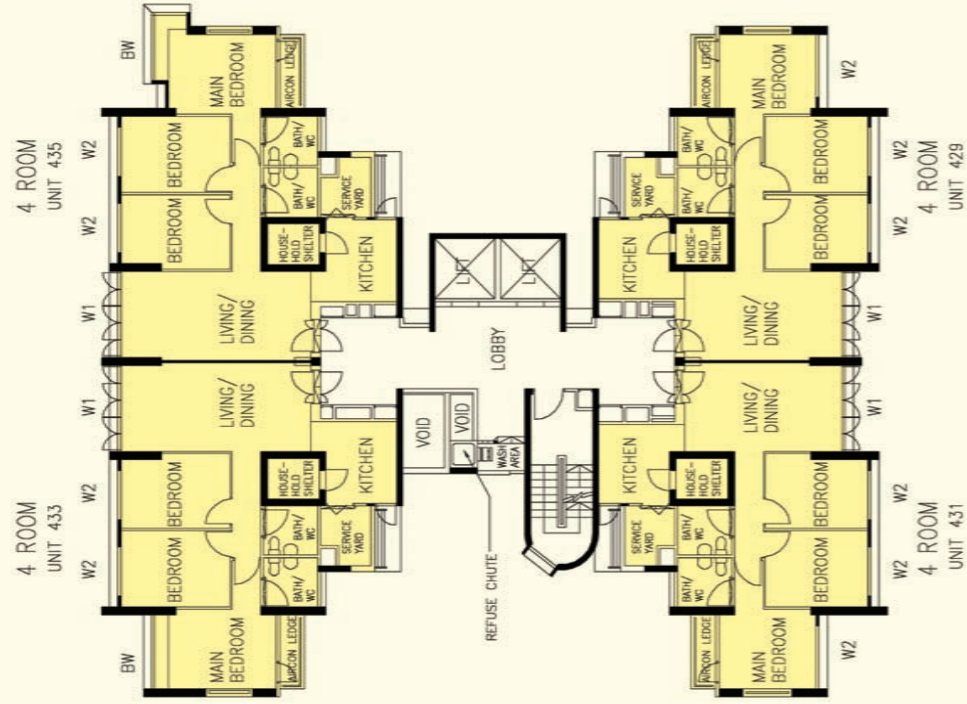
10TH TO 15TH STOREY FLOOR PLAN BLOCK 307B



The coloured floor plan is not intended to demarcate the boundary of the flat.

Additional Features:

- Bedroom : Decorative Semi-Solid Timber Door (Type D9)
- Bathroom/WC : Laminated Semi-Solid Timber Door (Type D9a)
- Kitchen/Bathroom/WC Floor : Ceramic Tiles
- Service Yard Floor : Ceramic Tiles with Tile Skirting
- Household Shelter Floor : Ceramic Tiles
- Vanity Top Wash Basin at Bathroom/WC of Main Bedroom for 5-Room Flats
- Concealed Electrical Wiring & Water Supply Pipes



LEGEND:

- Studio Apt. (Type A)
- Studio Apt. (Type B)
- 3 Room
- 4 Room
- 5 Room

- W1 - Three Quarter Height Window (approx. 500mm high parapet wall)
- W2 - Three Quarter Height Window (approx. 700mm high parapet wall)
- BW - Bay Window

Unless otherwise indicated all windows will be standard height windows.



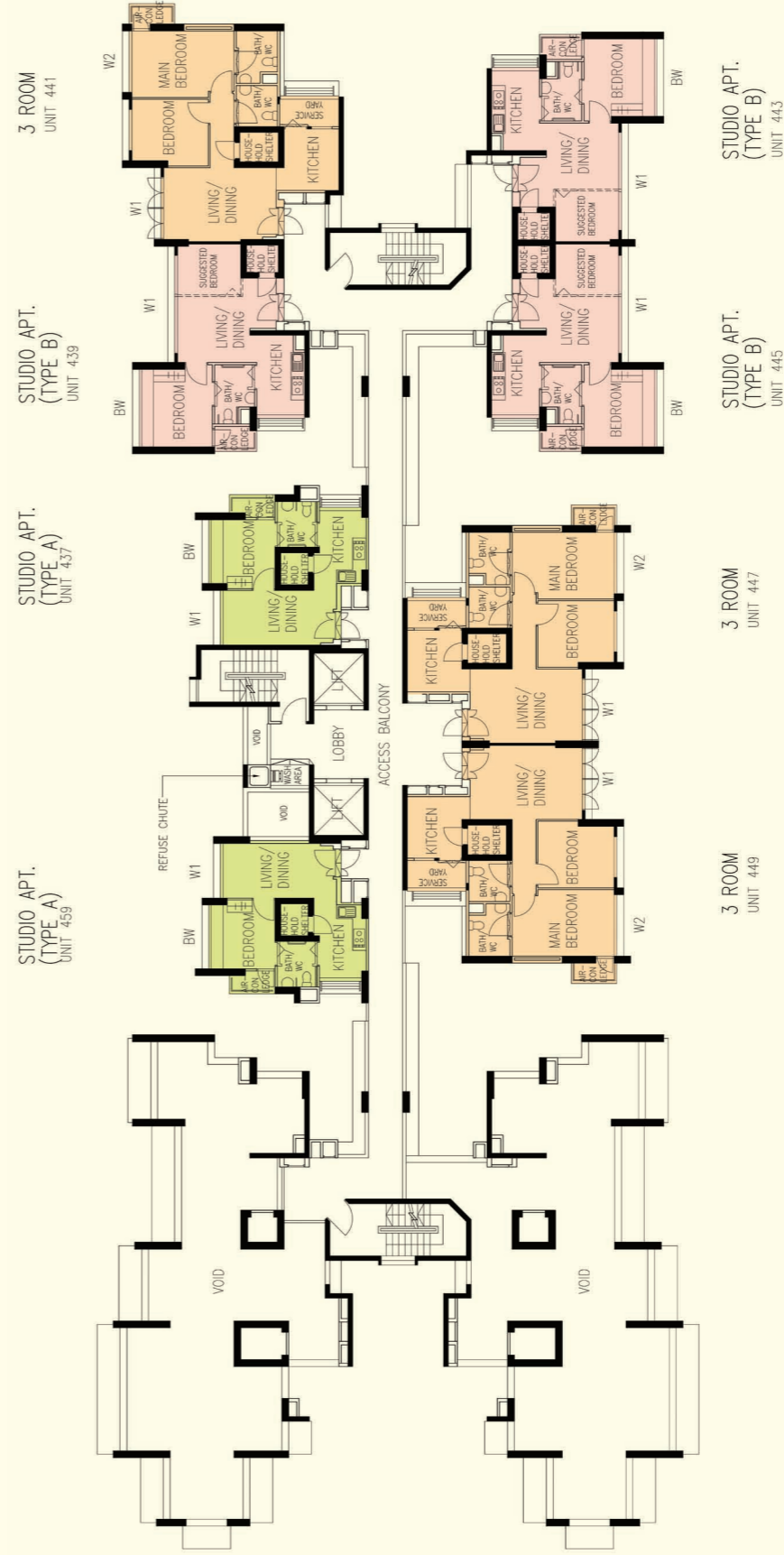
Additional Features:

- Bedroom : Decorative Semi-Solid Timber Door (Type D9)
- Bathroom/WC : Laminated Semi-Solid Timber Door (Type D9a)
- Kitchen/Bathroom/WC Floor : Ceramic Tiles
- Service Yard Floor : Ceramic Tiles with Tile Skirting
- Household Shelter Floor : Ceramic Tiles
- Vanity Top Wash Basin at Bathroom/WC of Main Bedroom for 5-Room Flats
- Concealed Electrical Wiring & Water Supply Pipes



**16TH TO 20TH STOREY FLOOR PLAN
BLOCK 307B**

The coloured floor plan is not intended to demarcate the boundary of the flat.



LEGEND:

- Studio Apt. (Type A)
- Studio Apt. (Type B)
- 3 Room
- 4 Room
- 5 Room

- W1 - Three Quarter Height Window (approx. 500mm high parapet wall)
- W2 - Three Quarter Height Window (approx. 700mm high parapet wall)
- BW - Bay Window

Unless otherwise indicated all windows will be standard height windows.



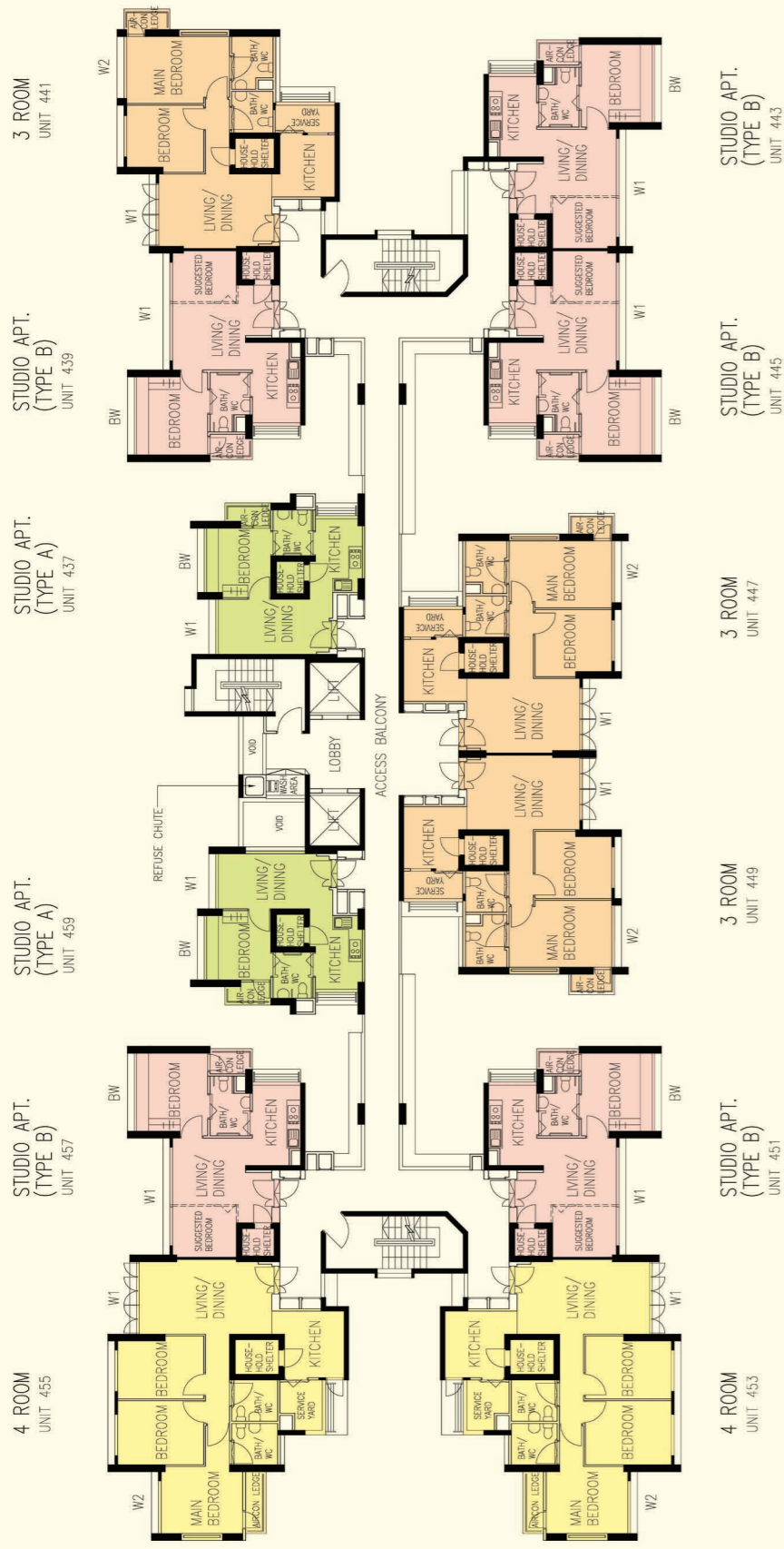
Additional Features:

- Bedroom : Decorative Semi-Solid Timber Door (Type D9)
- Bathroom/WC : Laminated Semi-Solid Timber Door (Type D9a)
- Kitchen/Bathroom/WC Floor : Ceramic Tiles
- Service Yard Floor : Ceramic Tiles with Tile Skirting
- Household Shelter Floor : Ceramic Tiles
- Vanity Top Wash Basin at Bathroom/WC of Main Bedroom for 5-Room Flats
- Concealed Electrical Wiring & Water Supply Pipes



**3RD STOREY FLOOR PLAN
BLOCK 307C**

The coloured floor plan is not intended to demarcate the boundary of the flat.



LEGEND:

- Studio Apt. (Type A)
- Studio Apt. (Type B)
- 3 Room
- 4 Room
- 5 Room

W1 - Three Quarter Height Window (approx. 500mm high parapet wall)
 W2 - Three Quarter Height Window (approx. 700mm high parapet wall)
 BW - Bay Window

Unless otherwise indicated all windows will be standard height windows.

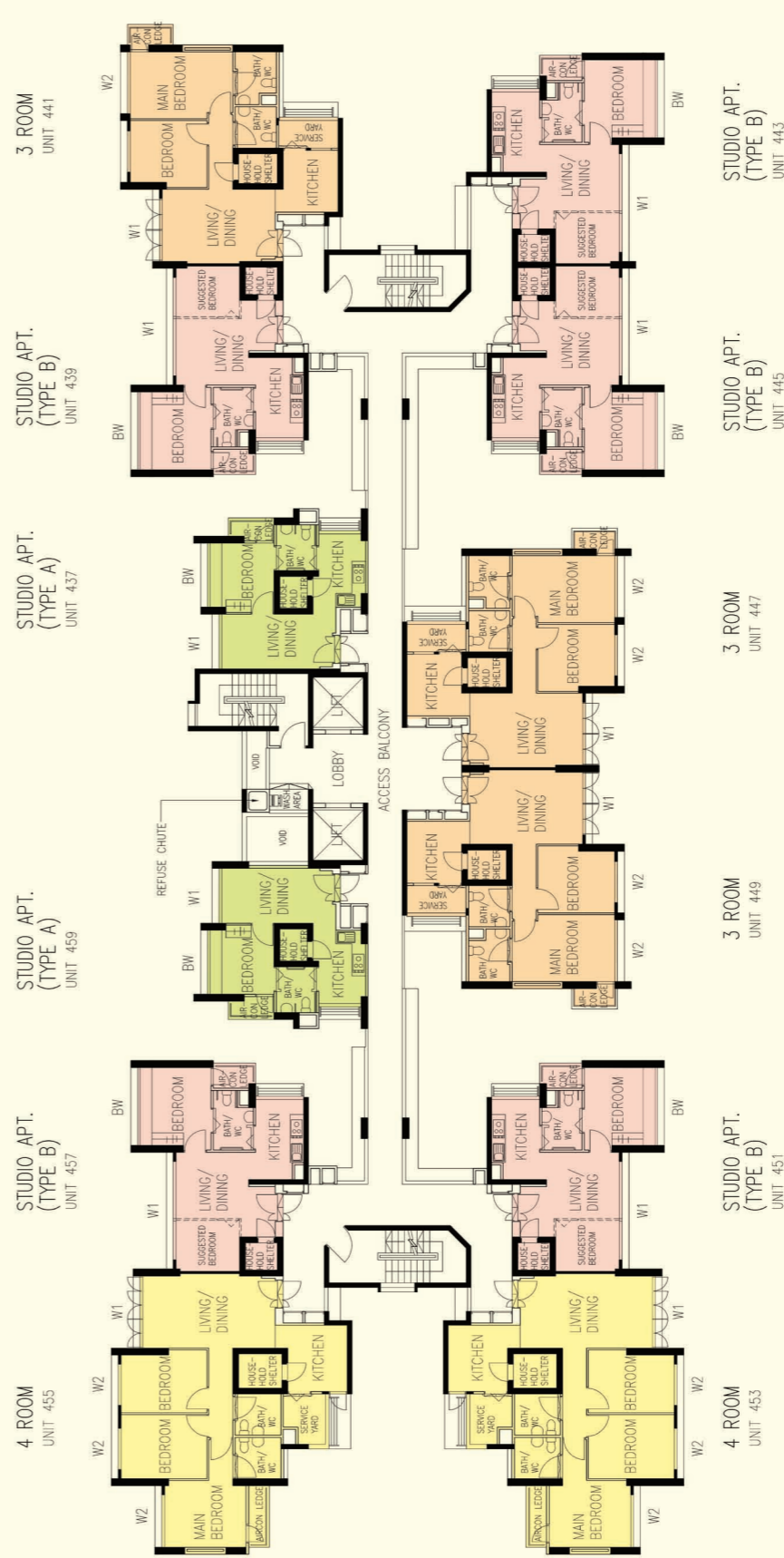


4TH TO 9TH STOREY FLOOR PLAN BLOCK 307C

The coloured floor plan is not intended to demarcate the boundary of the flat.

Additional Features:

- Bedroom : Decorative Semi-Solid Timber Door (Type D9)
- Bathroom/WC : Laminated Semi-Solid Timber Door (Type D9a)
- Kitchen/Bathroom/WC Floor : Ceramic Tiles
- Service Yard Floor : Ceramic Tiles with Tile Skirting
- Household Shelter Floor : Ceramic Tiles
- Vanity Top Wash Basin at Bathroom/WC of Main Bedroom for 5-Room Flats
- Concealed Electrical Wiring & Water Supply Pipes



LEGEND:

- Studio Apt. (Type A)
- Studio Apt. (Type B)
- 3 Room
- 4 Room
- 5 Room

W1 - Three Quarter Height Window (approx. 500mm high parapet wall)
 W2 - Three Quarter Height Window (approx. 700mm high parapet wall)
 BW - Bay Window

Unless otherwise indicated all windows will be standard height windows.



10TH TO 15TH STOREY FLOOR PLAN BLOCK 307C

The coloured floor plan is not intended to demarcate the boundary of the flat.

Additional Features:

- Bedroom : Decorative Semi-Solid Timber Door (Type D9)
- Bathroom/WC : Laminated Semi-Solid Timber Door (Type D9a)
- Kitchen/Bathroom/WC Floor : Ceramic Tiles
- Service Yard Floor : Ceramic Tiles with Tile Skirting
- Household Shelter Floor : Ceramic Tiles
- Vanity Top Wash Basin at Bathroom/WC of Main Bedroom for 5-Room Flats
- Concealed Electrical Wiring & Water Supply Pipes





LEGEND:

- Studio Apt. (Type A)
- Studio Apt. (Type B)
- 3 Room
- 4 Room
- 5 Room

W1 - Three Quarter Height Window (approx. 500mm high parapet wall)
 W2 - Three Quarter Height Window (approx. 700mm high parapet wall)
 BW - Bay Window

Unless otherwise indicated all windows will be standard height windows.

SCALE 0 2 4 6 8 10 METRES

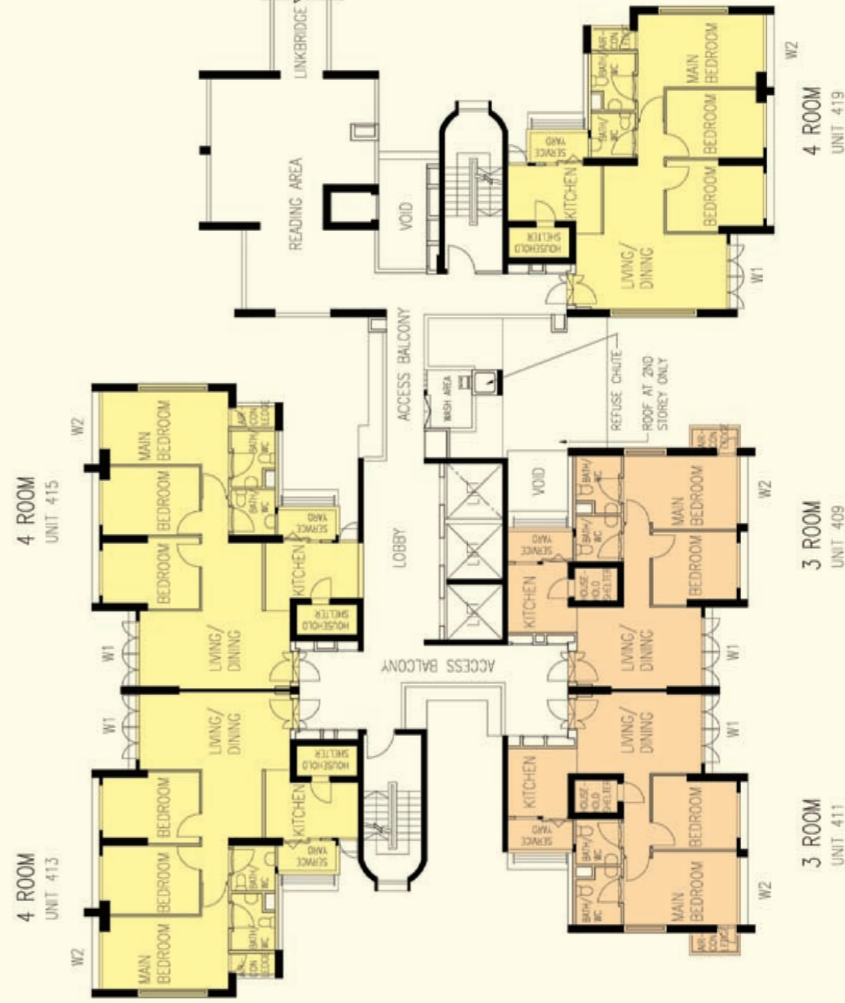


16TH TO 21ST STOREY FLOOR PLAN BLOCK 307C

The coloured floor plan is not intended to demarcate the boundary of the flat.

Additional Features:

- Bedroom : Decorative Semi-Solid Timber Door (Type D9)
- Bathroom/WC : Laminated Semi-Solid Timber Door (Type D9a)
- Kitchen/Bathroom/WC Floor : Ceramic Tiles
- Service Yard Floor : Ceramic Tiles with Tile Skirting
- Household Shelter Floor : Ceramic Tiles
- Vanity Top Wash Basin at Bathroom/WC of Main Bedroom for 5-Room Flats
- Concealed Electrical Wiring & Water Supply Pipes



LEGEND:

- Studio Apt. (Type A)
- Studio Apt. (Type B)
- 3 Room
- 4 Room
- 5 Room

W1 - Three Quarter Height Window (approx. 500mm high parapet wall)
 W2 - Three Quarter Height Window (approx. 700mm high parapet wall)

Unless otherwise indicated all windows will be standard height windows.

SCALE 0 2 4 6 8 10 METRES



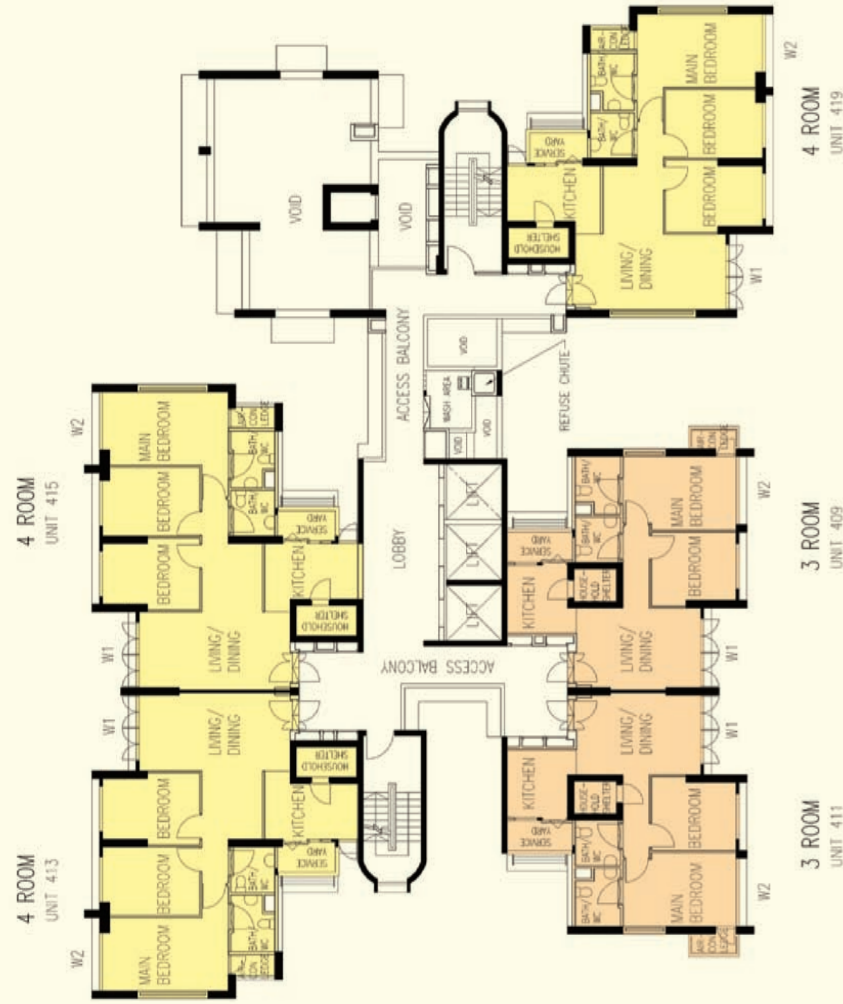
2ND STOREY FLOOR PLAN BLOCK 308A

Additional Features:

- Bedroom : Decorative Semi-Solid Timber Door (Type D9)
- Bathroom/WC : Laminated Semi-Solid Timber Door (Type D9a)
- Kitchen/Bathroom/WC Floor : Ceramic Tiles
- Service Yard Floor : Ceramic Tiles with Tile Skirting
- Household Shelter Floor : Ceramic Tiles
- Vanity Top Wash Basin at Bathroom/WC of Main Bedroom for 5-Room Flats
- Concealed Electrical Wiring & Water Supply Pipes



The coloured floor plan is not intended to demarcate the boundary of the flat.



LEGEND:

- Studio Apt. (Type A)
- Studio Apt. (Type B)
- 3 Room
- 4 Room
- 5 Room

W1 - Three Quarter Height Window (approx. 500mm high parapet wall)
 W2 - Three Quarter Height Window (approx. 700mm high parapet wall)

Unless otherwise indicated all windows will be standard height windows.



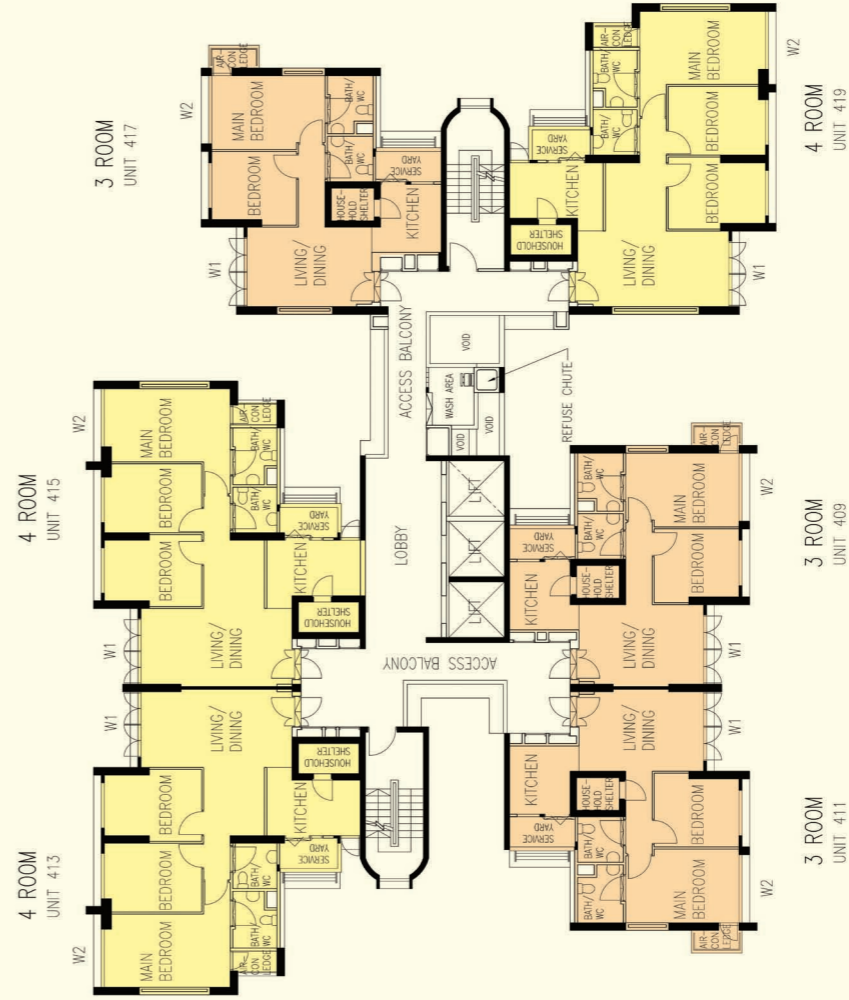
**3RD STOREY FLOOR PLAN
BLOCK 308A**

Additional Features:

- Bedroom : Decorative Semi-Solid Timber Door (Type D9)
- Bathroom/WC : Laminated Semi-Solid Timber Door (Type D9a)
- Kitchen/Bathroom/WC Floor : Ceramic Tiles
- Service Yard Floor : Ceramic Tiles with Tile Skirting
- Household Shelter Floor : Ceramic Tiles
- Vanity Top Wash Basin at Bathroom/WC of Main Bedroom for 5-Room Flats
- Concealed Electrical Wiring & Water Supply Pipes



The coloured floor plan is not intended to demarcate the boundary of the flat.



LEGEND:

- Studio Apt. (Type A)
- Studio Apt. (Type B)
- 3 Room
- 4 Room
- 5 Room

W1 - Three Quarter Height Window (approx. 500mm high parapet wall)
 W2 - Three Quarter Height Window (approx. 700mm high parapet wall)

Unless otherwise indicated all windows will be standard height windows.



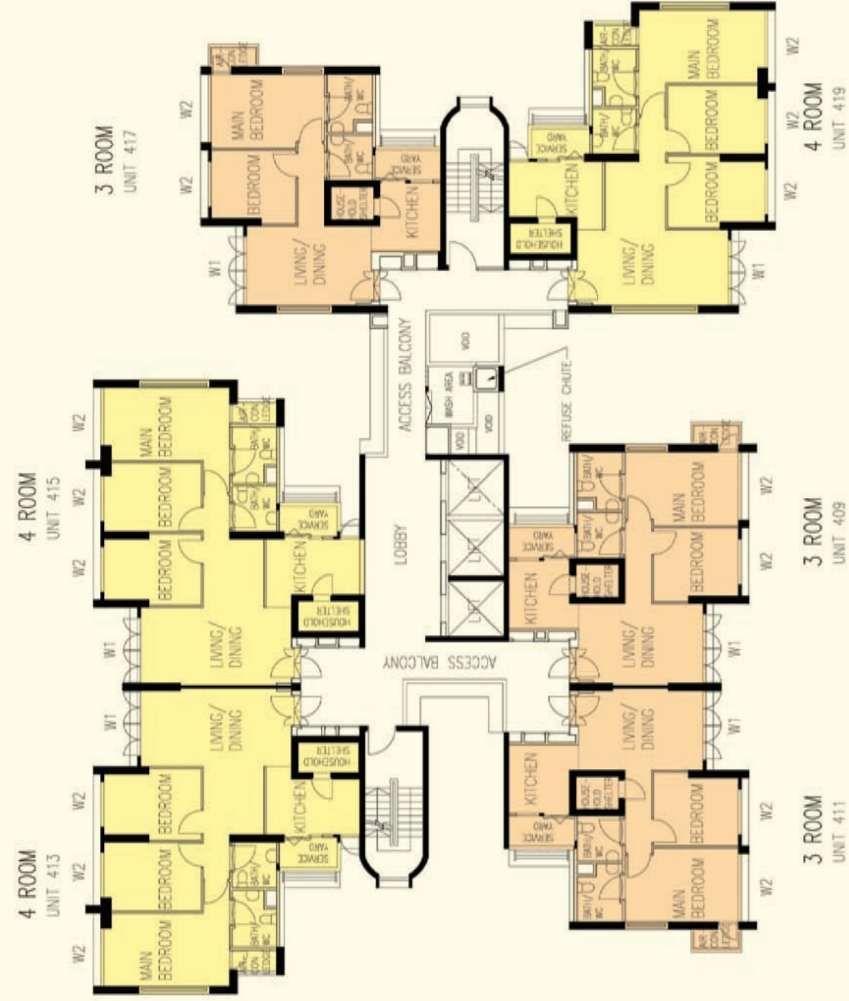
**4TH TO 9TH STOREY FLOOR PLAN
BLOCK 308A**

Additional Features:

- Bedroom : Decorative Semi-Solid Timber Door (Type D9)
- Bathroom/WC : Laminated Semi-Solid Timber Door (Type D9a)
- Kitchen/Bathroom/WC Floor : Ceramic Tiles
- Service Yard Floor : Ceramic Tiles with Tile Skirting
- Household Shelter Floor : Ceramic Tiles
- Vanity Top Wash Basin at Bathroom/WC of Main Bedroom for 5-Room Flats
- Concealed Electrical Wiring & Water Supply Pipes



The coloured floor plan is not intended to demarcate the boundary of the flat.



LEGEND:

- Studio Apt. (Type A)
- Studio Apt. (Type B)
- 3 Room
- 4 Room
- 5 Room

- W1 - Three Quarter Height Window (approx. 500mm high parapet wall)
- W2 - Three Quarter Height Window (approx. 700mm high parapet wall)

Unless otherwise indicated all windows will be standard height windows.

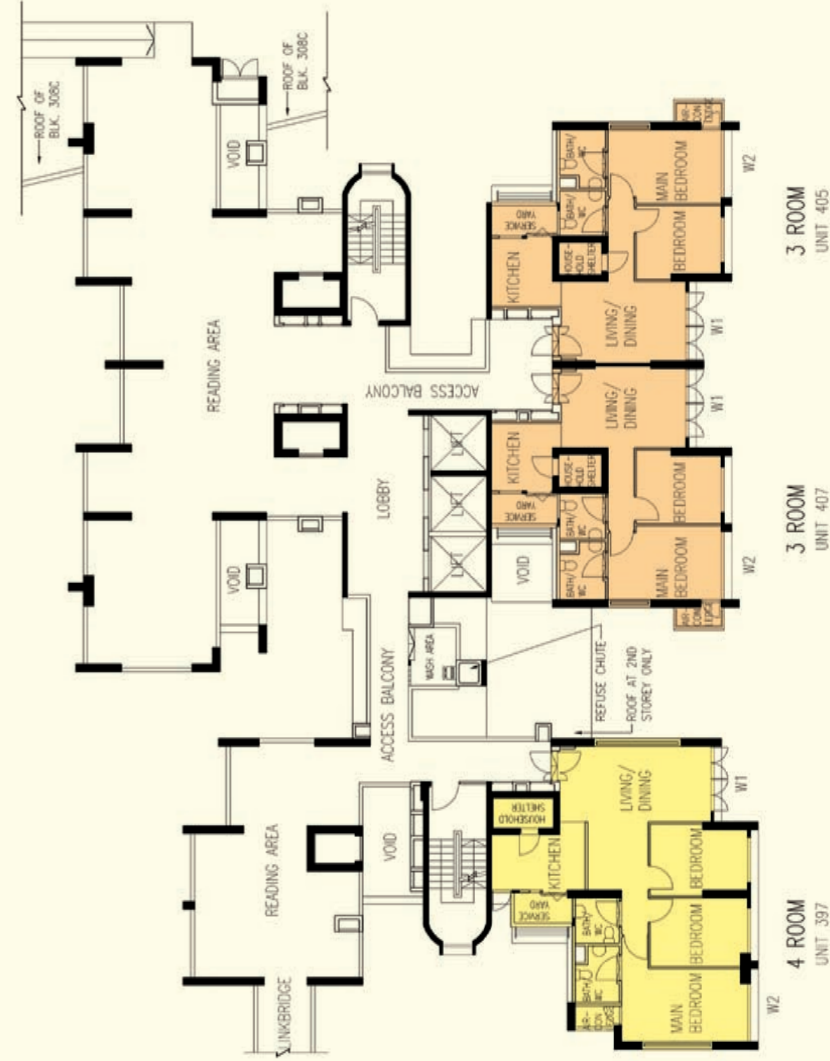


**16TH TO 21ST STOREY FLOOR PLAN
BLOCK 308A**

The coloured floor plan is not intended to demarcate the boundary of the flat.

Additional Features:

- Bedroom : Decorative Semi-Solid Timber Door (Type D9)
- Bathroom/WC : Laminated Semi-Solid Timber Door (Type D9a)
- Kitchen/Bathroom/WC Floor : Ceramic Tiles
- Service Yard Floor : Ceramic Tiles with Tile Skirting
- Household Shelter Floor : Ceramic Tiles
- Vanity Top Wash Basin at Bathroom/WC of Main Bedroom for 5-Room Flats
- Concealed Electrical Wiring & Water Supply Pipes



LEGEND:

- Studio Apt. (Type A)
- Studio Apt. (Type B)
- 3 Room
- 4 Room
- 5 Room

- W1 - Three Quarter Height Window (approx. 500mm high parapet wall)
- W2 - Three Quarter Height Window (approx. 700mm high parapet wall)

Unless otherwise indicated all windows will be standard height windows.



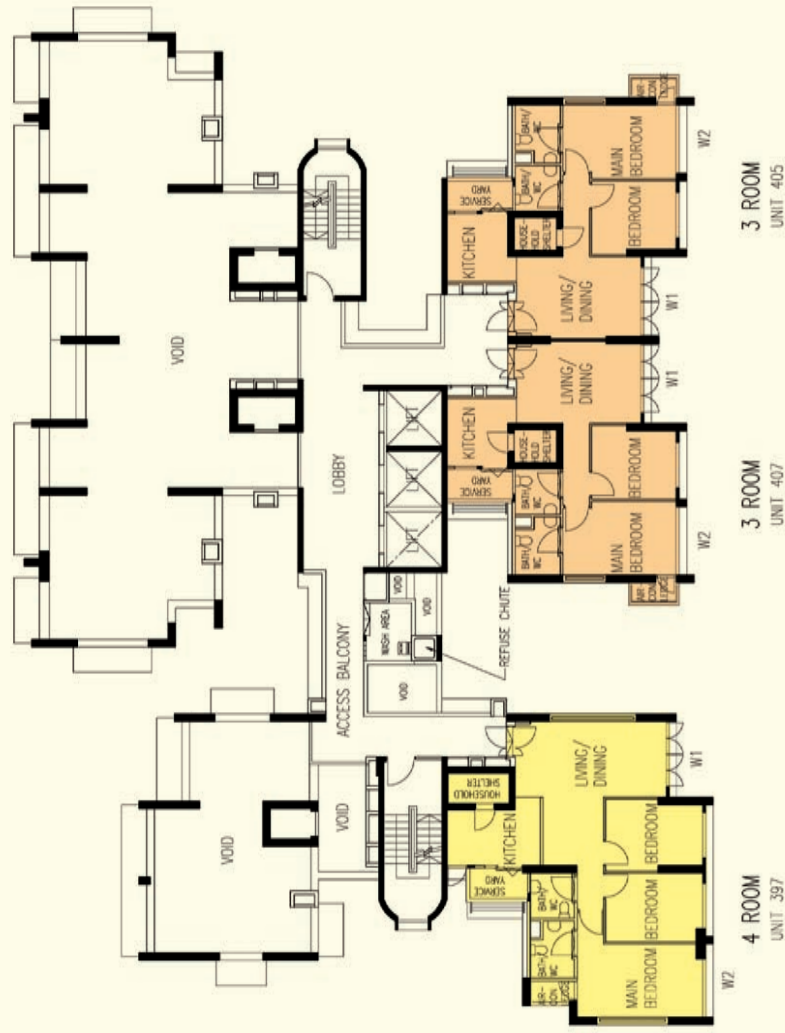
**2ND STOREY FLOOR PLAN
BLOCK 308B**

The coloured floor plan is not intended to demarcate the boundary of the flat.

Additional Features:

- Bedroom : Decorative Semi-Solid Timber Door (Type D9)
- Bathroom/WC : Laminated Semi-Solid Timber Door (Type D9a)
- Kitchen/Bathroom/WC Floor : Ceramic Tiles
- Service Yard Floor : Ceramic Tiles with Tile Skirting
- Household Shelter Floor : Ceramic Tiles
- Vanity Top Wash Basin at Bathroom/WC of Main Bedroom for 5-Room Flats
- Concealed Electrical Wiring & Water Supply Pipes





LEGEND:

- Studio Apt. (Type A)
- Studio Apt. (Type B)
- 3 Room
- 4 Room
- 5 Room

W1 - Three Quarter Height Window (approx. 500mm high parapet wall)
 W2 - Three Quarter Height Window (approx. 700mm high parapet wall)

Unless otherwise indicated all windows will be standard height windows.



**3RD STOREY FLOOR PLAN
BLOCK 308B**



Additional Features:

- Bedroom : Decorative Semi-Solid Timber Door (Type D9)
- Bathroom/WC : Laminated Semi-Solid Timber Door (Type D9a)
- Kitchen/Bathroom/WC Floor : Ceramic Tiles
- Service Yard Floor : Ceramic Tiles with Tile Skirting
- Household Shelter Floor : Ceramic Tiles
- Vanity Top Wash Basin at Bathroom/WC of Main Bedroom for 5-Room Flats
- Concealed Electrical Wiring & Water Supply Pipes

The coloured floor plan is not intended to demarcate the boundary of the flat.



LEGEND:

- Studio Apt. (Type A)
- Studio Apt. (Type B)
- 3 Room
- 4 Room
- 5 Room

W1 - Three Quarter Height Window (approx. 500mm high parapet wall)
 W2 - Three Quarter Height Window (approx. 700mm high parapet wall)

Unless otherwise indicated all windows will be standard height windows.



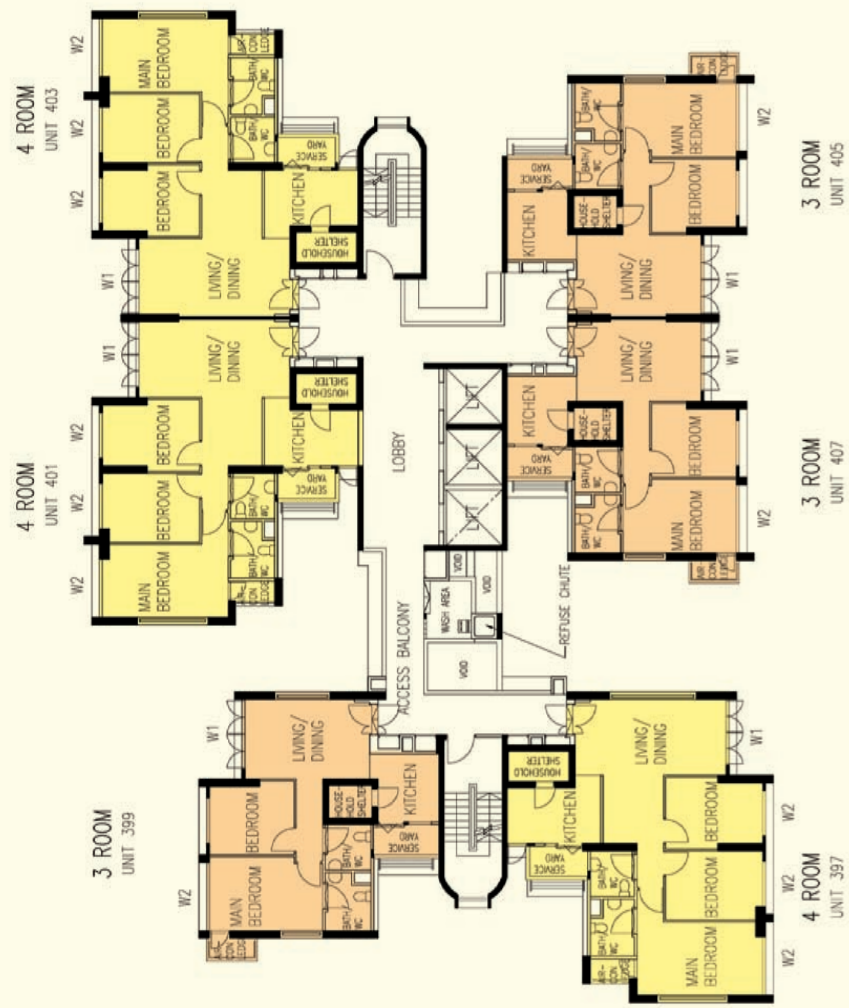
**4TH TO 9TH STOREY FLOOR PLAN
BLOCK 308B**



Additional Features:

- Bedroom : Decorative Semi-Solid Timber Door (Type D9)
- Bathroom/WC : Laminated Semi-Solid Timber Door (Type D9a)
- Kitchen/Bathroom/WC Floor : Ceramic Tiles
- Service Yard Floor : Ceramic Tiles with Tile Skirting
- Household Shelter Floor : Ceramic Tiles
- Vanity Top Wash Basin at Bathroom/WC of Main Bedroom for 5-Room Flats
- Concealed Electrical Wiring & Water Supply Pipes

The coloured floor plan is not intended to demarcate the boundary of the flat.



LEGEND:

- Studio Apt. (Type A)
- Studio Apt. (Type B)
- 3 Room
- 4 Room
- 5 Room

W1 - Three Quarter Height Window (approx. 500mm high parapet wall)
 W2 - Three Quarter Height Window (approx. 700mm high parapet wall)

Unless otherwise indicated all windows will be standard height windows.



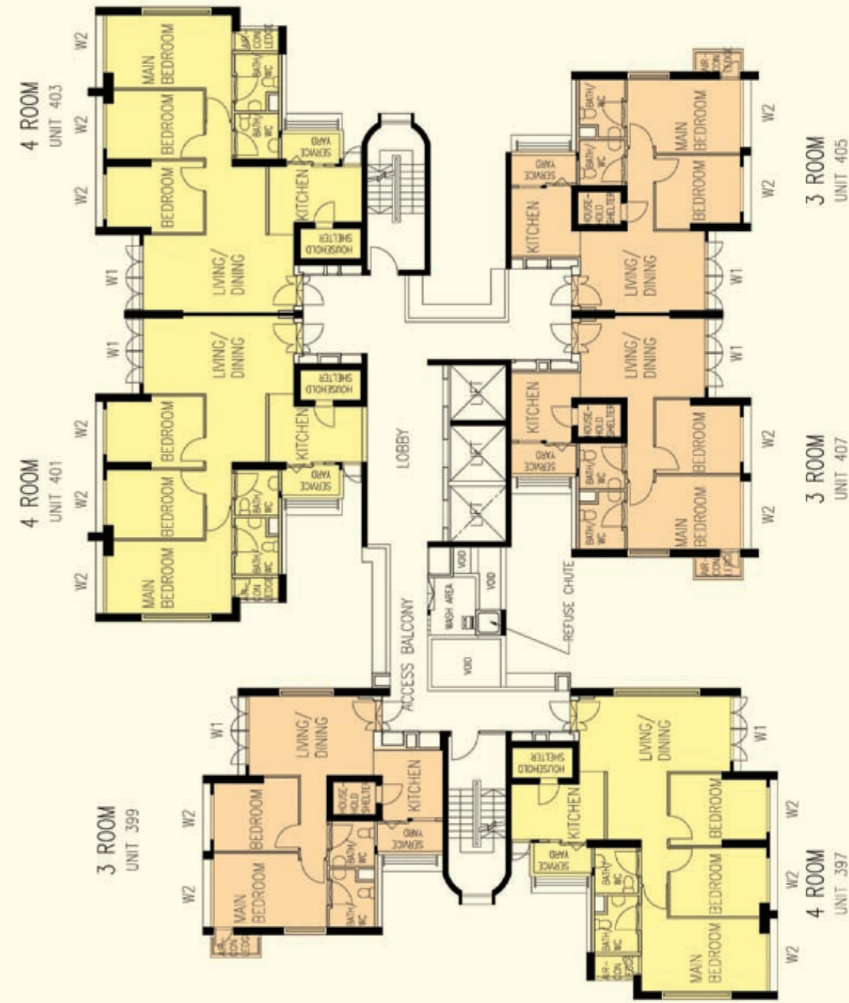
Additional Features:

- Bedroom : Decorative Semi-Solid Timber Door (Type D9)
- Bathroom/WC : Laminated Semi-Solid Timber Door (Type D9a)
- Kitchen/Bathroom/WC Floor : Ceramic Tiles
- Service Yard Floor : Ceramic Tiles with Tile Skirting
- Household Shelter Floor : Ceramic Tiles
- Vanity Top Wash Basin at Bathroom/WC of Main Bedroom for 5-Room Flats
- Concealed Electrical Wiring & Water Supply Pipes



**10TH TO 15TH STOREY FLOOR PLAN
 BLOCK 308B**

The coloured floor plan is not intended to demarcate the boundary of the flat.



LEGEND:

- Studio Apt. (Type A)
- Studio Apt. (Type B)
- 3 Room
- 4 Room
- 5 Room

W1 - Three Quarter Height Window (approx. 500mm high parapet wall)
 W2 - Three Quarter Height Window (approx. 700mm high parapet wall)

Unless otherwise indicated all windows will be standard height windows.



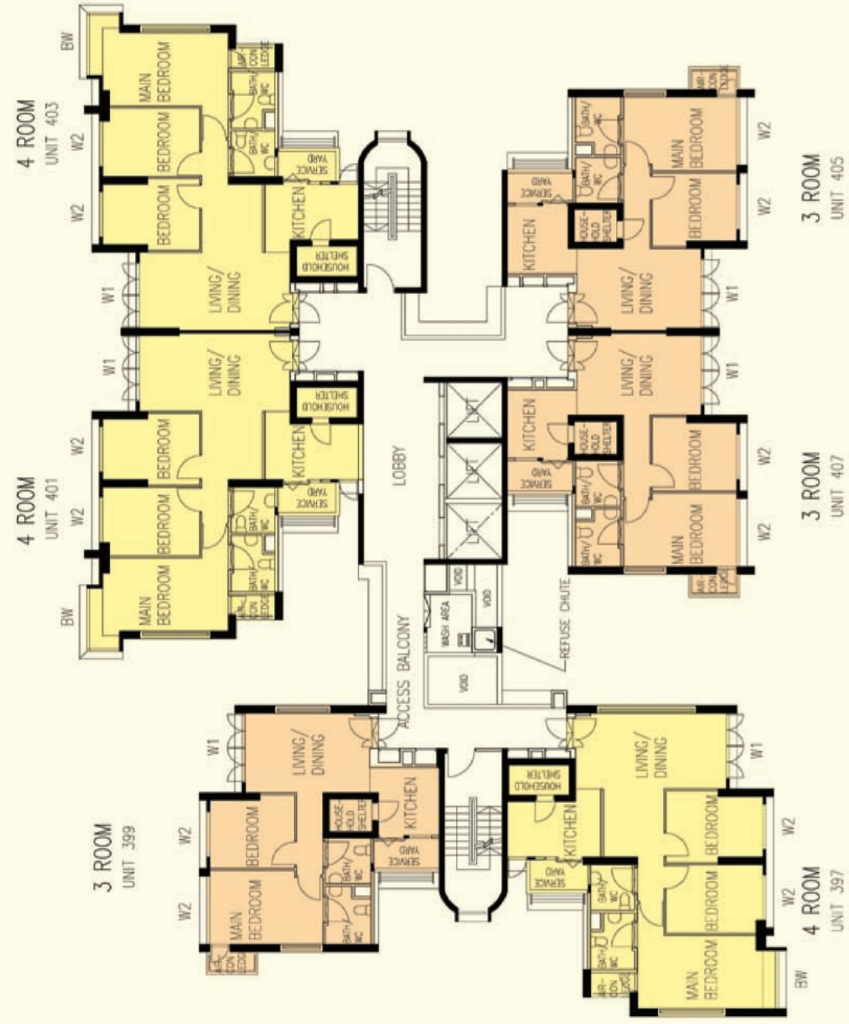
Additional Features:

- Bedroom : Decorative Semi-Solid Timber Door (Type D9)
- Bathroom/WC : Laminated Semi-Solid Timber Door (Type D9a)
- Kitchen/Bathroom/WC Floor : Ceramic Tiles
- Service Yard Floor : Ceramic Tiles with Tile Skirting
- Household Shelter Floor : Ceramic Tiles
- Vanity Top Wash Basin at Bathroom/WC of Main Bedroom for 5-Room Flats
- Concealed Electrical Wiring & Water Supply Pipes



**16TH TO 21ST STOREY FLOOR PLAN
 BLOCK 308B**

The coloured floor plan is not intended to demarcate the boundary of the flat.



LEGEND:

- Studio Apt. (Type A)
- Studio Apt. (Type B)
- 3 Room
- 4 Room
- 5 Room

W1 - Three Quarter Height Window (approx. 500mm high parapet wall)
 W2 - Three Quarter Height Window (approx. 700mm high parapet wall)
 BW - Bay Window

Unless otherwise indicated all windows will be standard height windows.



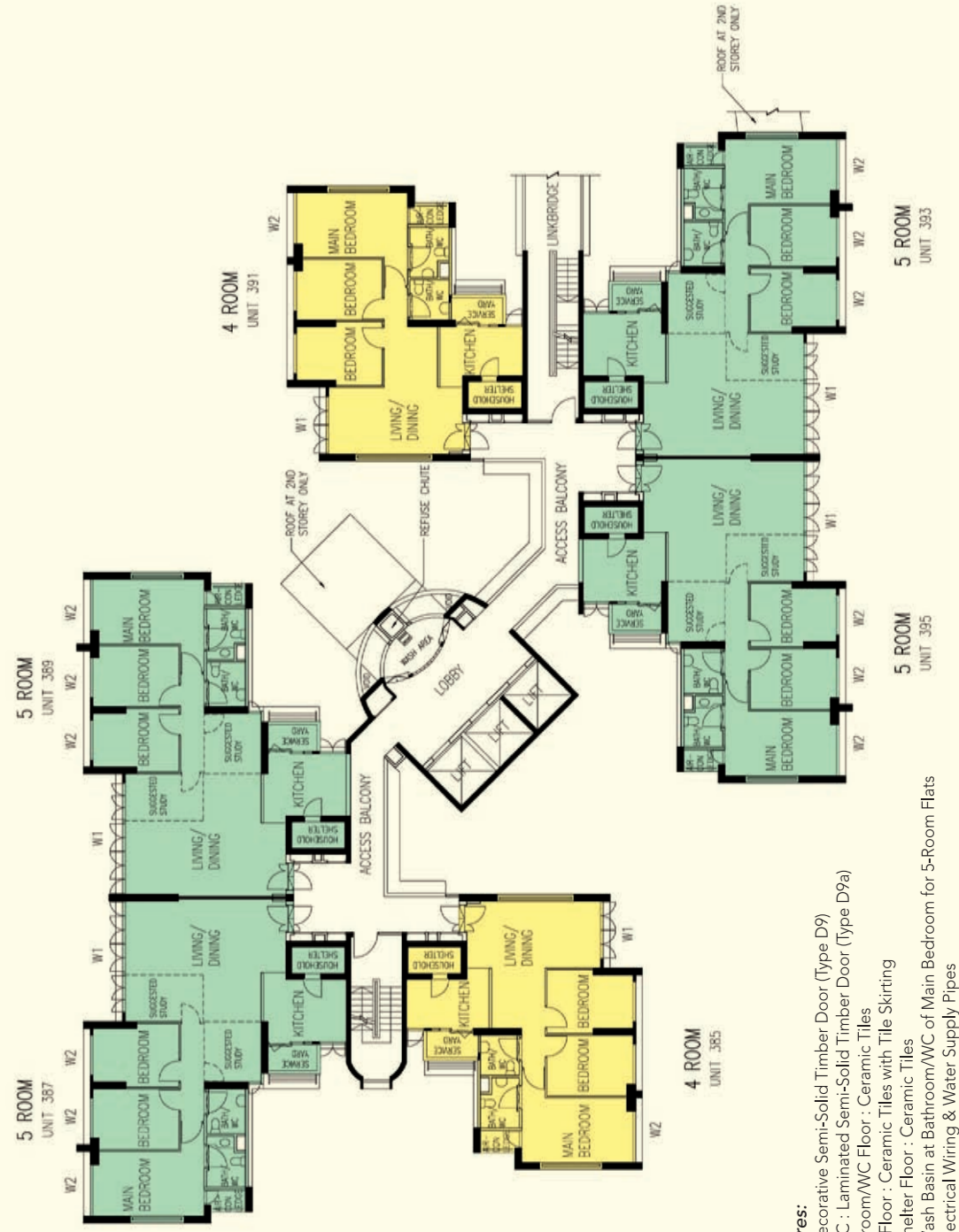
Additional Features:

- Bedroom : Decorative Semi-Solid Timber Door (Type D9)
- Bathroom/WC : Laminated Semi-Solid Timber Door (Type D9a)
- Kitchen/Bathroom/WC Floor : Ceramic Tiles
- Service Yard Floor : Ceramic Tiles with Tile Skirting
- Household Shelter Floor : Ceramic Tiles
- Vanity Top Wash Basin at Bathroom/WC of Main Bedroom for 5-Room Flats
- Concealed Electrical Wiring & Water Supply Pipes



**22ND TO 30TH STOREY FLOOR PLAN
BLOCK 308B**

The coloured floor plan is not intended to demarcate the boundary of the flat.



LEGEND:

- Studio Apt. (Type A)
- Studio Apt. (Type B)
- 3 Room
- 4 Room
- 5 Room

- Additional Features:**
- Bedroom : Decorative Semi-Solid Timber Door (Type D9)
 - Bathroom/WC : Laminated Semi-Solid Timber Door (Type D9a)
 - Kitchen/Bathroom/WC Floor : Ceramic Tiles
 - Service Yard Floor : Ceramic Tiles with Tile Skirting
 - Household Shelter Floor : Ceramic Tiles
 - Vanity Top Wash Basin at Bathroom/WC of Main Bedroom for 5-Room Flats
 - Concealed Electrical Wiring & Water Supply Pipes

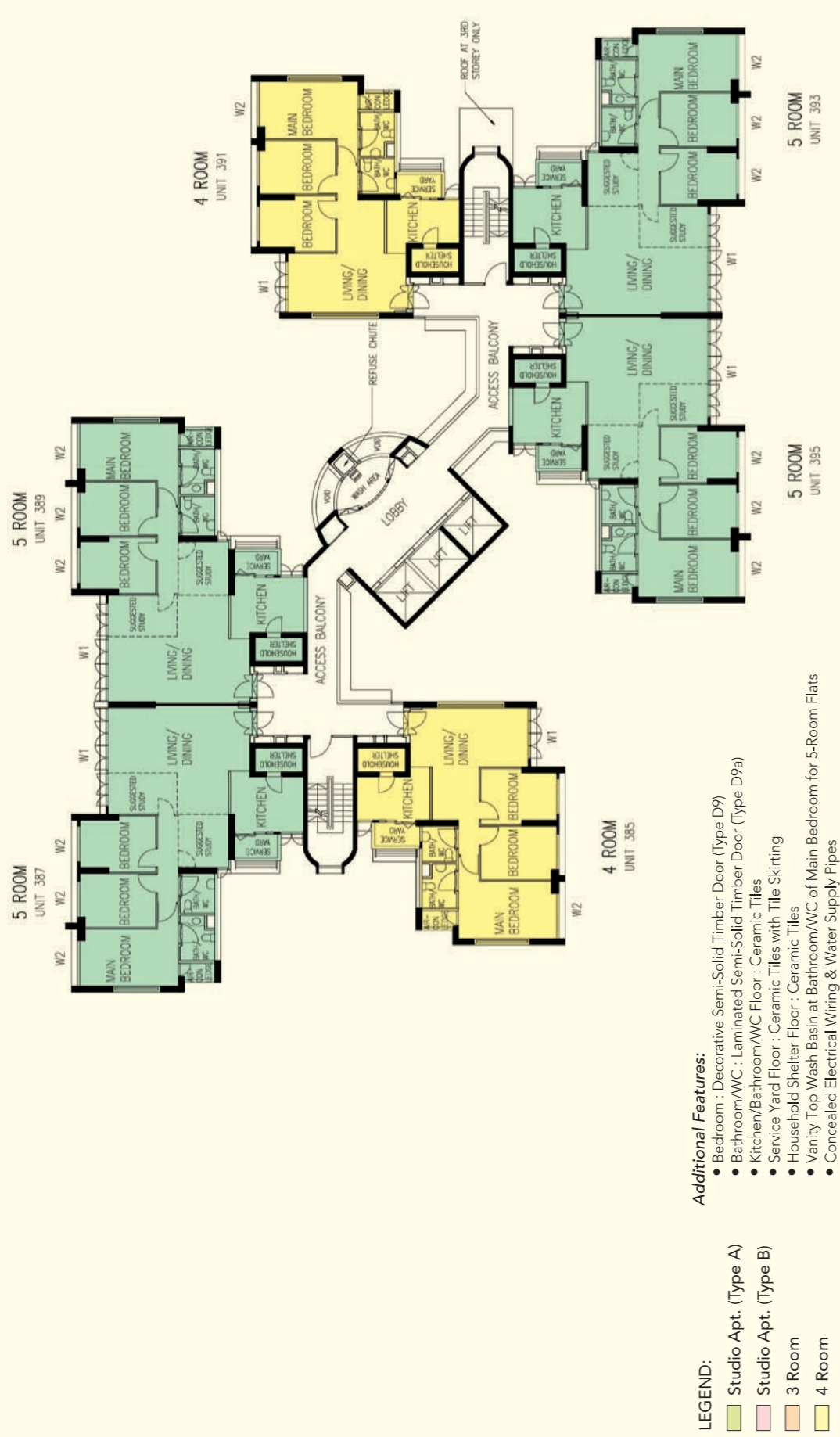
W1 - Three Quarter Height Window (approx. 500mm high parapet wall)
 W2 - Three Quarter Height Window (approx. 700mm high parapet wall)

Unless otherwise indicated all windows will be standard height windows.



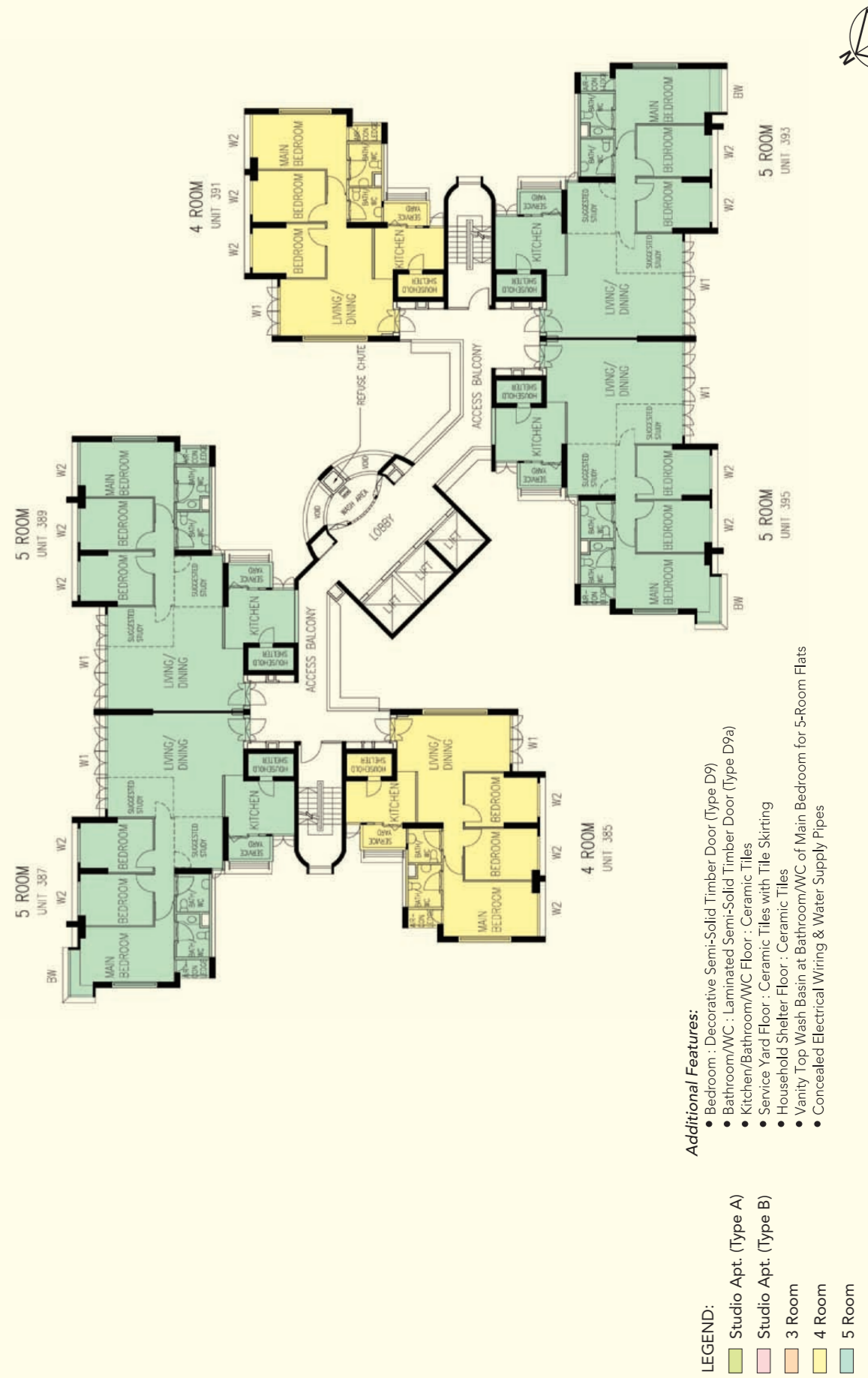
**2ND STOREY FLOOR PLAN
BLOCK 310A**

The coloured floor plan is not intended to demarcate the boundary of the flat.



3RD TO 9TH STOREY FLOOR PLAN BLOCK 310A

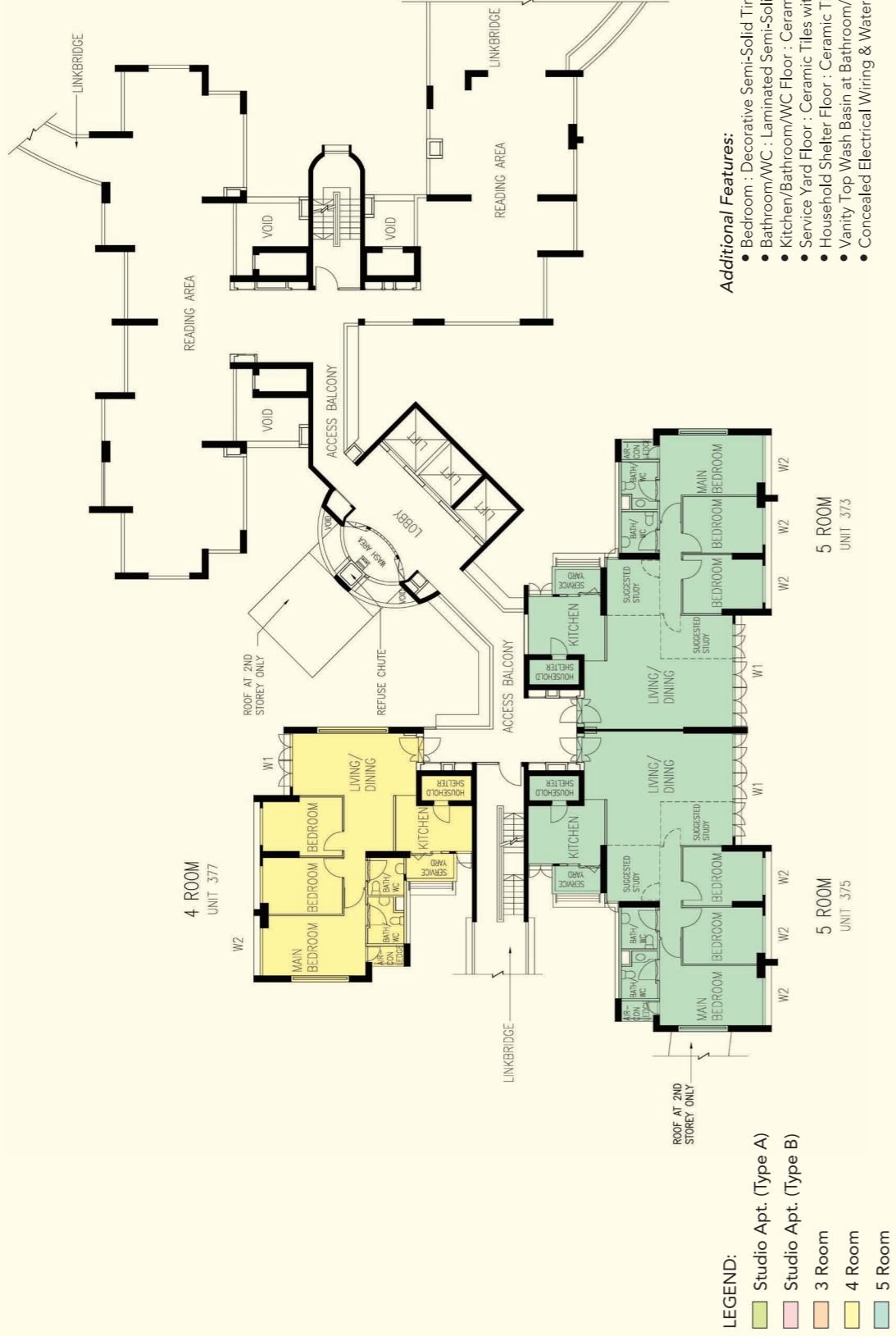
The coloured floor plan is not intended to demarcate the boundary of the flat.



10TH TO 21ST STOREY FLOOR PLAN BLOCK 310A

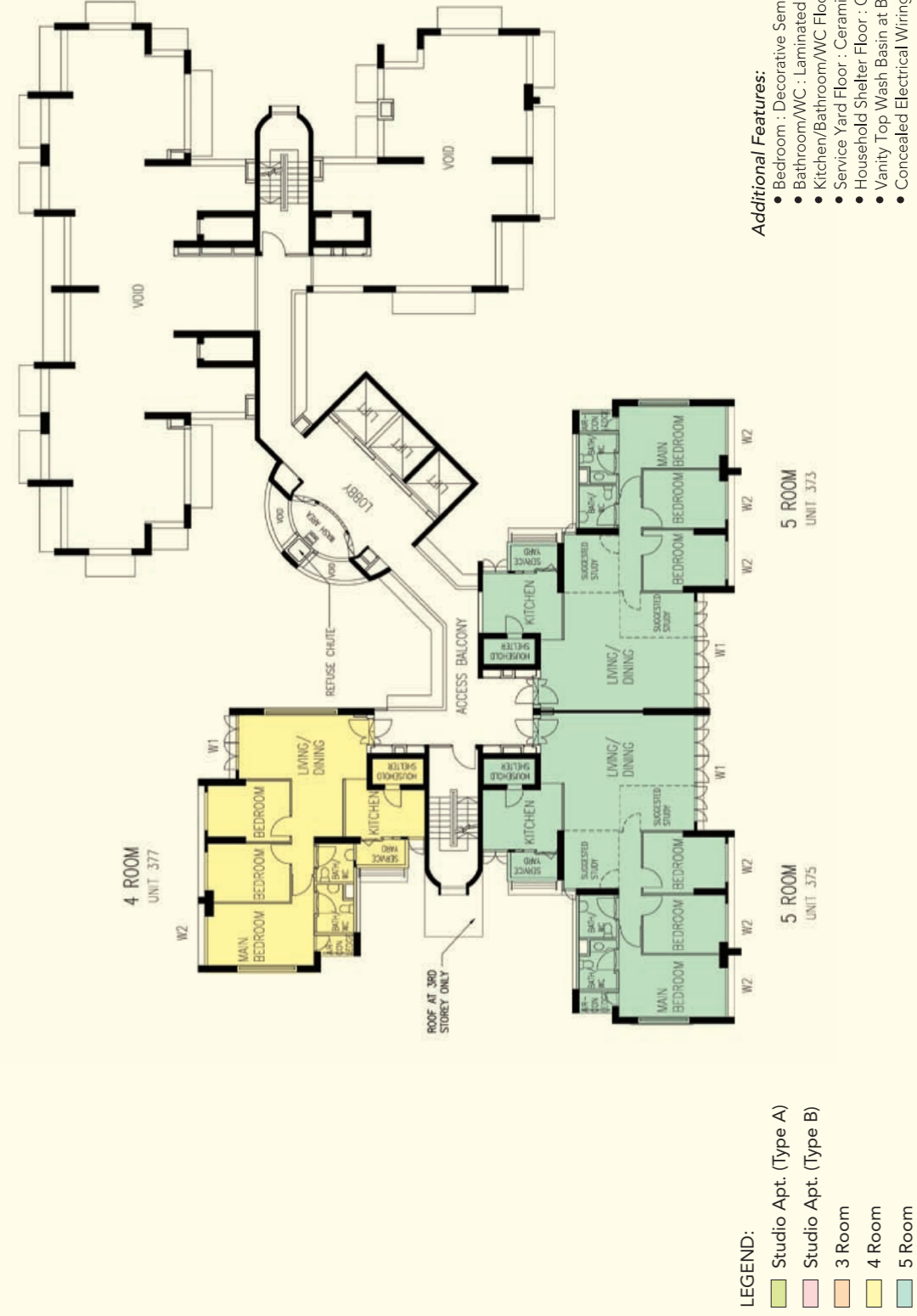
The coloured floor plan is not intended to demarcate the boundary of the flat.





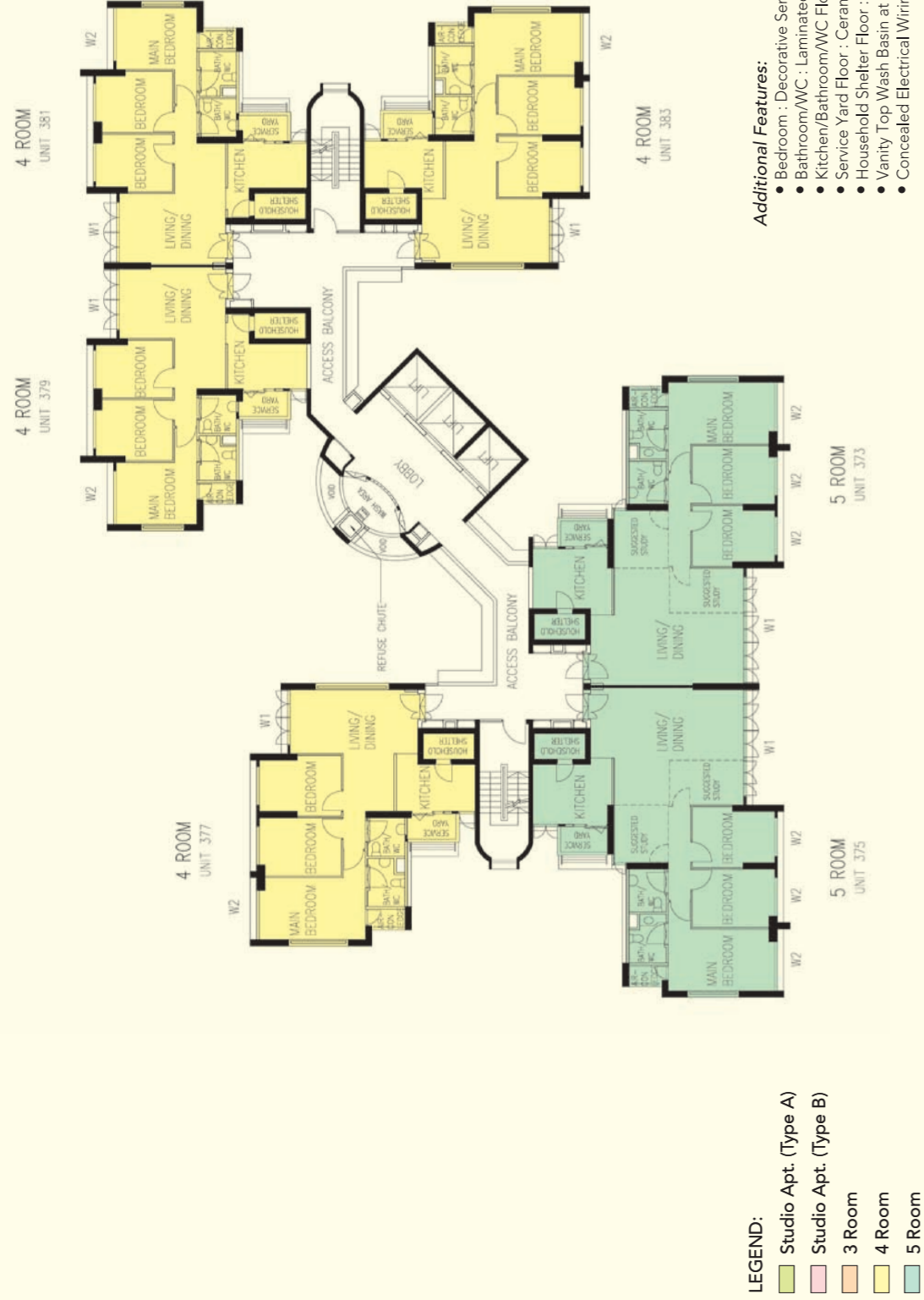
2ND STOREY FLOOR PLAN BLOCK 310B

The coloured floor plan is not intended to demarcate the boundary of the flat.



3RD STOREY FLOOR PLAN BLOCK 310B

The coloured floor plan is not intended to demarcate the boundary of the flat.



LEGEND:

- Studio Apt. (Type A)
- Studio Apt. (Type B)
- 3 Room
- 4 Room
- 5 Room

- W1 - Three Quarter Height Window (approx. 500mm high parapet wall)
- W2 - Three Quarter Height Window (approx. 700mm high parapet wall)

Unless otherwise indicated all windows will be standard height windows.

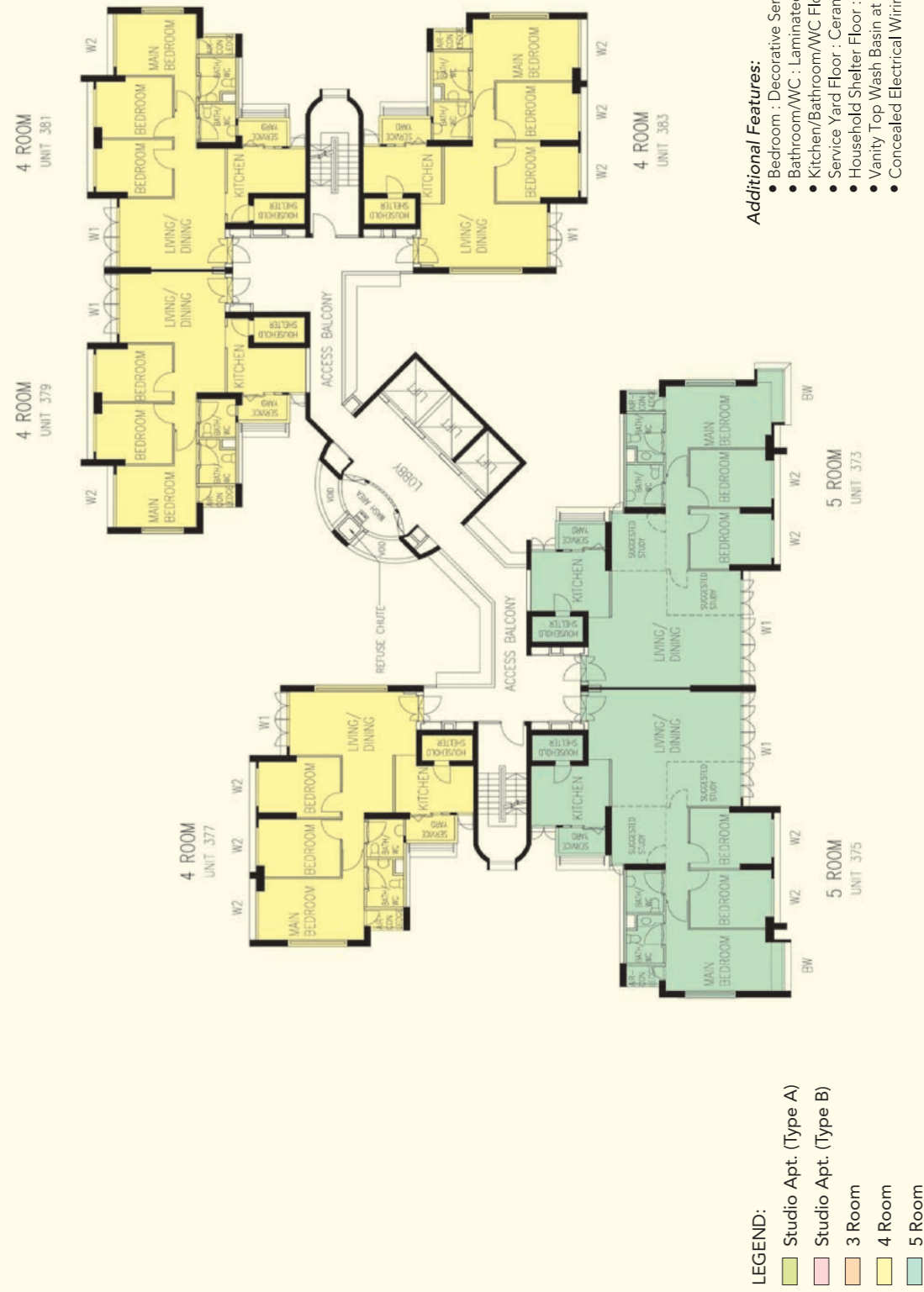


**4TH TO 9TH STOREY FLOOR PLAN
BLOCK 310B**

The coloured floor plan is not intended to demarcate the boundary of the flat.

Additional Features:

- Bedroom : Decorative Semi-Solid Timber Door (Type D9)
- Bathroom/WC : Laminated Semi-Solid Timber Door (Type D9a)
- Kitchen/Bathroom/WC Floor : Ceramic Tiles
- Service Yard Floor : Ceramic Tiles with Tile Skirting
- Household Shelter Floor : Ceramic Tiles
- Vanity Top Wash Basin at Bathroom/WC of Main Bedroom for 5-Room Flats
- Concealed Electrical Wiring & Water Supply Pipes



LEGEND:

- Studio Apt. (Type A)
- Studio Apt. (Type B)
- 3 Room
- 4 Room
- 5 Room

- W1 - Three Quarter Height Window (approx. 500mm high parapet wall)
- W2 - Three Quarter Height Window (approx. 700mm high parapet wall)
- BW - Bay Window

Unless otherwise indicated all windows will be standard height windows.



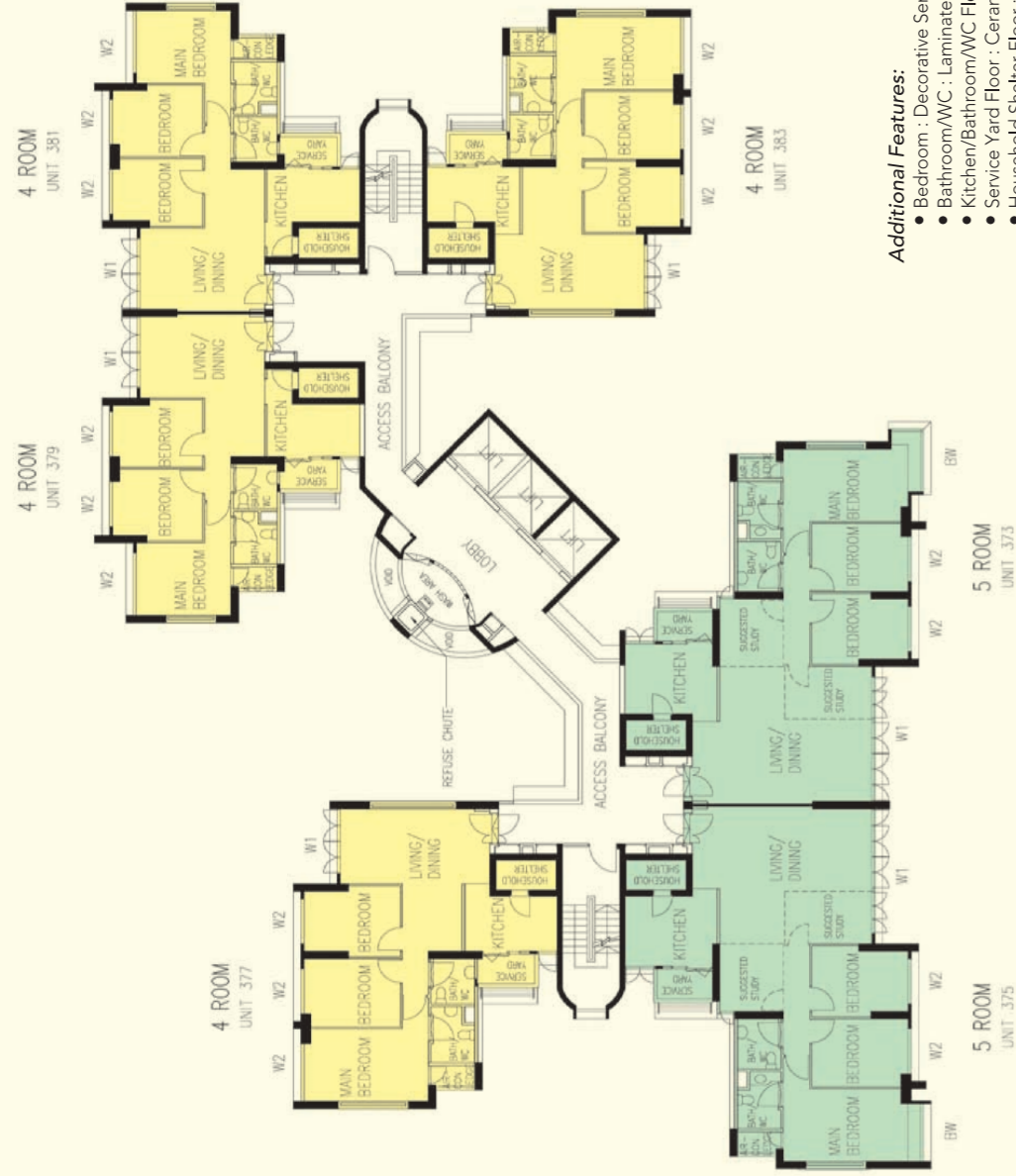
**10TH TO 15TH STOREY FLOOR PLAN
BLOCK 310B**

The coloured floor plan is not intended to demarcate the boundary of the flat.

Additional Features:

- Bedroom : Decorative Semi-Solid Timber Door (Type D9)
- Bathroom/WC : Laminated Semi-Solid Timber Door (Type D9a)
- Kitchen/Bathroom/WC Floor : Ceramic Tiles
- Service Yard Floor : Ceramic Tiles with Tile Skirting
- Household Shelter Floor : Ceramic Tiles
- Vanity Top Wash Basin at Bathroom/WC of Main Bedroom for 5-Room Flats
- Concealed Electrical Wiring & Water Supply Pipes





LEGEND:

- Studio Apt. (Type A)
- Studio Apt. (Type B)
- 3 Room
- 4 Room
- 5 Room

- W1 - Three Quarter Height Window (approx. 500mm high parapet wall)
- W2 - Three Quarter Height Window (approx. 700mm high parapet wall)
- BW - Bay Window

Unless otherwise indicated all windows will be standard height windows.



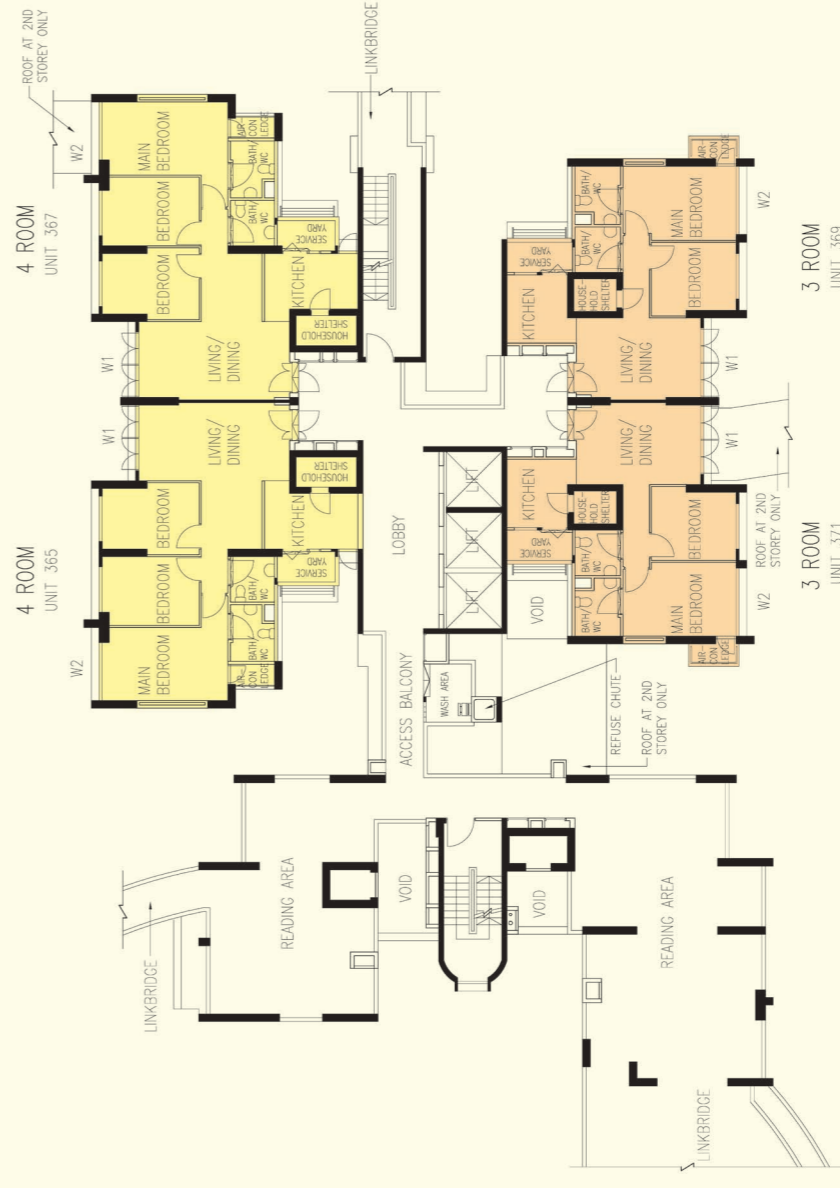
Additional Features:

- Bedroom : Decorative Semi-Solid Timber Door (Type D9)
- Bathroom/WC : Laminated Semi-Solid Timber Door (Type D9a)
- Kitchen/Bathroom/WC Floor : Ceramic Tiles
- Service Yard Floor : Ceramic Tiles with Tile Skirting
- Household Shelter Floor : Ceramic Tiles
- Vanity Top Wash Basin at Bathroom/WC of Main Bedroom for 5-Room Flats
- Concealed Electrical Wiring & Water Supply Pipes



**16TH TO 21ST STOREY FLOOR PLAN
BLOCK 310B**

The coloured floor plan is not intended to demarcate the boundary of the flat.



LEGEND:

- Studio Apt. (Type A)
- Studio Apt. (Type B)
- 3 Room
- 4 Room
- 5 Room

- W1 - Three Quarter Height Window (approx. 500mm high parapet wall)
- W2 - Three Quarter Height Window (approx. 700mm high parapet wall)

Unless otherwise indicated all windows will be standard height windows.



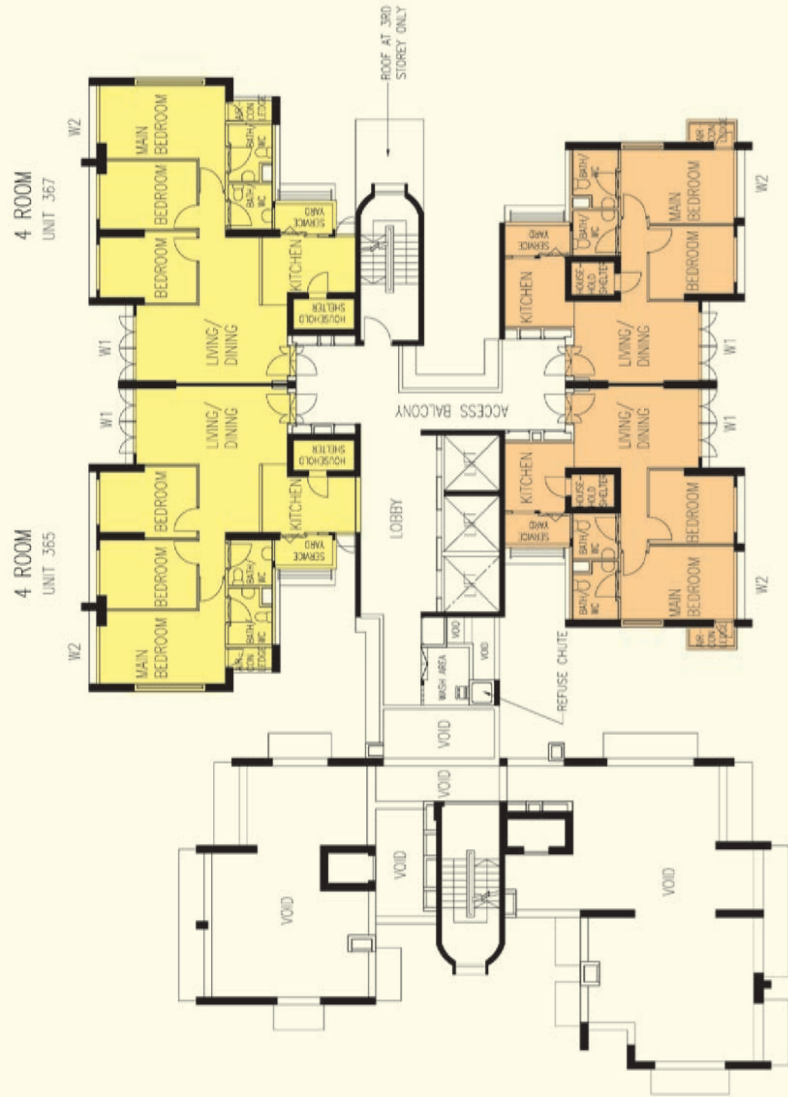
Additional Features:

- Bedroom : Decorative Semi-Solid Timber Door (Type D9)
- Bathroom/WC : Laminated Semi-Solid Timber Door (Type D9a)
- Kitchen/Bathroom/WC Floor : Ceramic Tiles
- Service Yard Floor : Ceramic Tiles with Tile Skirting
- Household Shelter Floor : Ceramic Tiles
- Vanity Top Wash Basin at Bathroom/WC of Main Bedroom for 5-Room Flats
- Concealed Electrical Wiring & Water Supply Pipes



**2ND STOREY FLOOR PLAN
BLOCK 310C**

The coloured floor plan is not intended to demarcate the boundary of the flat.



LEGEND:

- Studio Apt. (Type A)
- Studio Apt. (Type B)
- 3 Room
- 4 Room
- 5 Room

- W1 - Three Quarter Height Window (approx. 500mm high parapet wall)
- W2 - Three Quarter Height Window (approx. 700mm high parapet wall)

Unless otherwise indicated all windows will be standard height windows.



Additional Features:

- Bedroom : Decorative Semi-Solid Timber Door (Type D9)
- Bathroom/WC : Laminated Semi-Solid Timber Door (Type D9a)
- Kitchen/Bathroom/WC Floor : Ceramic Tiles
- Service Yard Floor : Ceramic Tiles with Tile Skirting
- Household Shelter Floor : Ceramic Tiles
- Vanity Top Wash Basin at Bathroom/WC of Main Bedroom for 5-Room Flats
- Concealed Electrical Wiring & Water Supply Pipes

**3RD STOREY FLOOR PLAN
BLOCK 310C**

The coloured floor plan is not intended to demarcate the boundary of the flat.



LEGEND:

- Studio Apt. (Type A)
- Studio Apt. (Type B)
- 3 Room
- 4 Room
- 5 Room

- W1 - Three Quarter Height Window (approx. 500mm high parapet wall)
- W2 - Three Quarter Height Window (approx. 700mm high parapet wall)

Unless otherwise indicated all windows will be standard height windows.



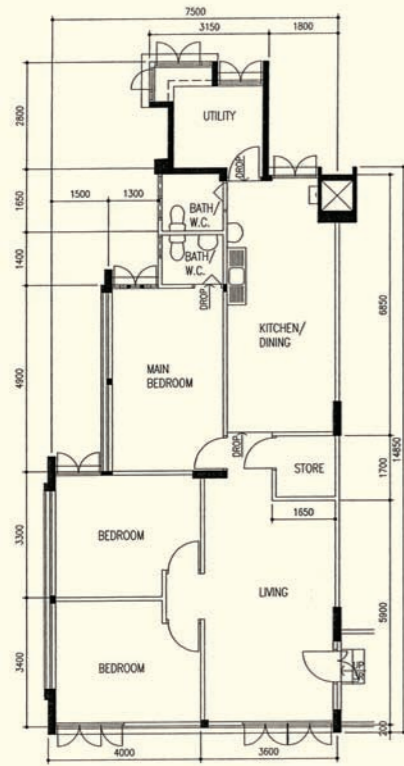
Additional Features:

- Bedroom : Decorative Semi-Solid Timber Door (Type D9)
- Bathroom/WC : Laminated Semi-Solid Timber Door (Type D9a)
- Kitchen/Bathroom/WC Floor : Ceramic Tiles
- Service Yard Floor : Ceramic Tiles with Tile Skirting
- Household Shelter Floor : Ceramic Tiles
- Vanity Top Wash Basin at Bathroom/WC of Main Bedroom for 5-Room Flats
- Concealed Electrical Wiring & Water Supply Pipes

**4TH TO 9TH STOREY FLOOR PLAN
BLOCK 310C**

The coloured floor plan is not intended to demarcate the boundary of the flat.

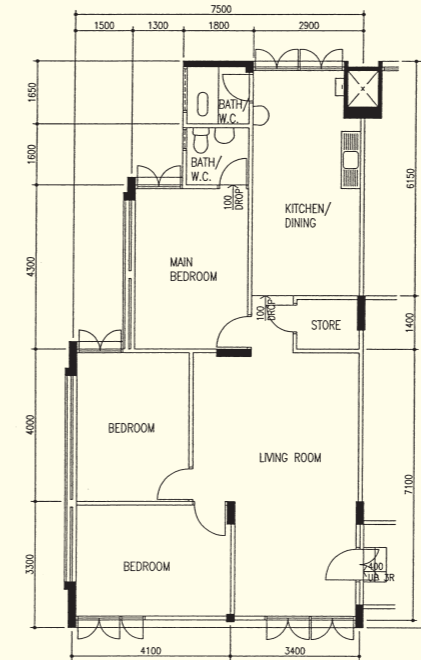




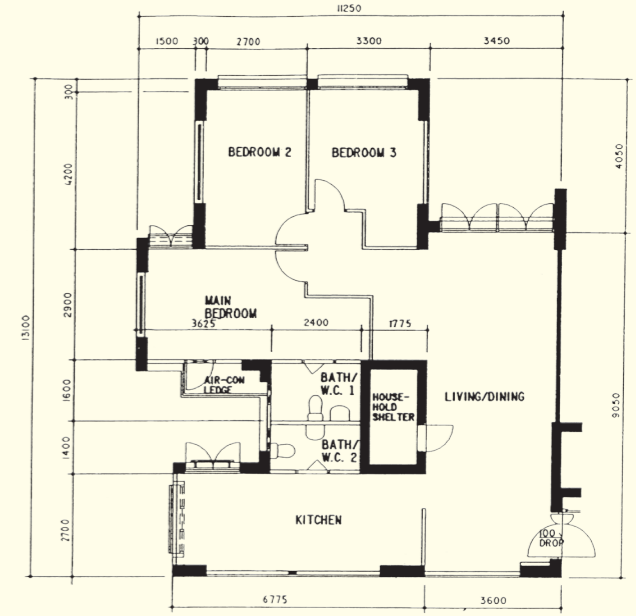
4 - Room
AMK N1 C5
Block 117, #04-441**



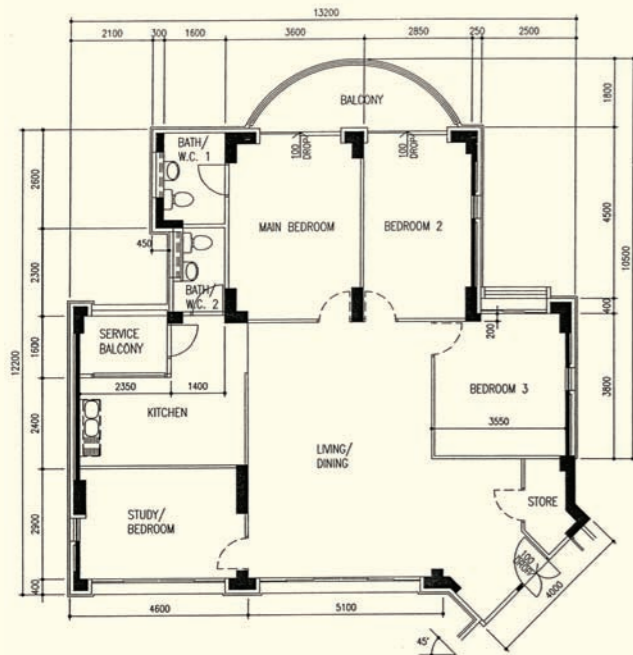
4 - Room
AMK N2 C4
Block 212, #03-1498**



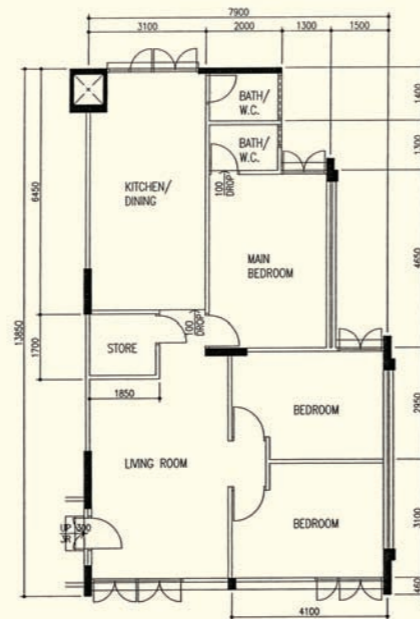
4 - Room
Cheng San Crest
AMK N5 C22
Block 505, #02-2694**



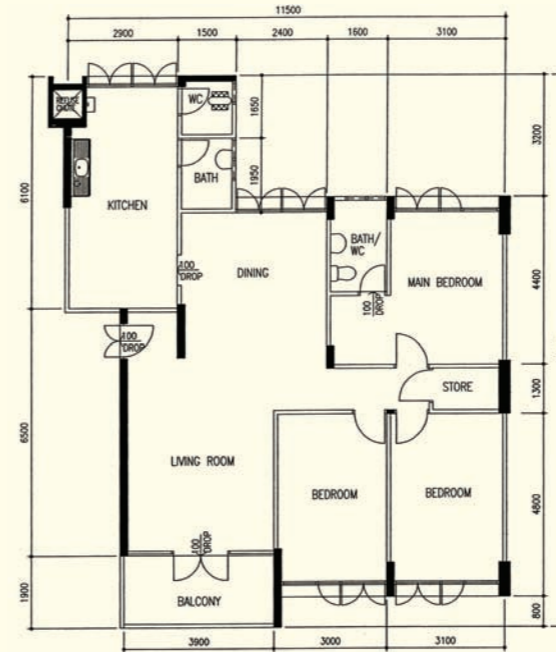
5 - Room
City View @ Cheng San
AMK N5 RC12
Block 596B, #17-327**



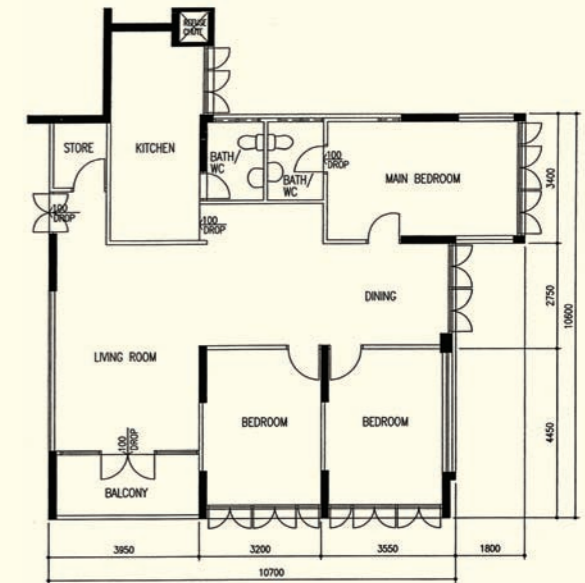
5 - Room
AMK N3 RC5
Block 317, #10-211**



4 - Room
AMK N4 C18
Block 475, #11-726**



5 - Room
AMK N6 C12
Block 622, #02-26**



5 - Room
AMK N7 C1
Block 710, #02-2611**

**This is a Repurchased Flat
Photographs and the revised floor plan (if any) can be viewed at www.hdb.gov.sg/esales

**This is a Repurchased Flat
Photographs and the revised floor plan (if any) can be viewed at www.hdb.gov.sg/esales