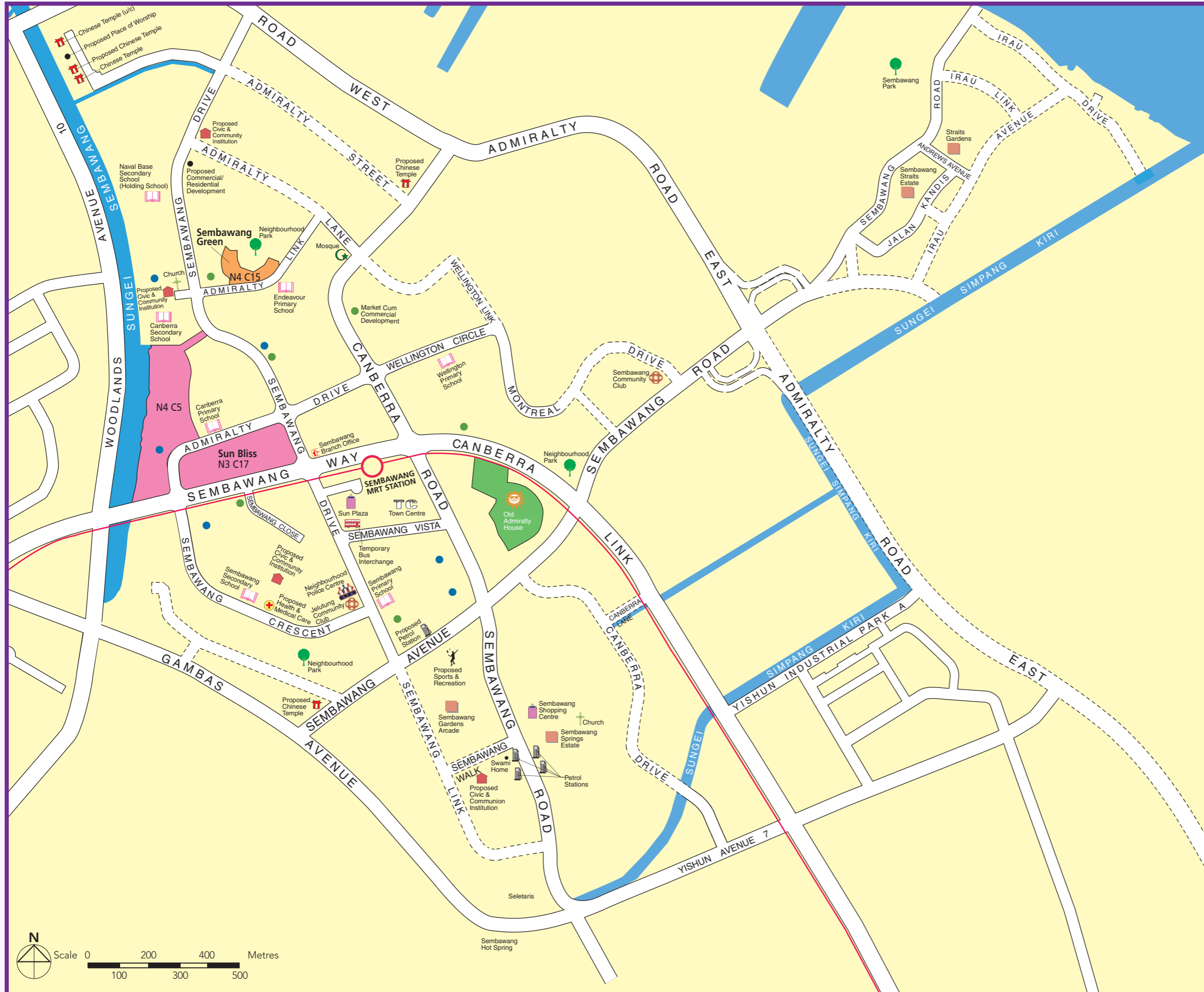
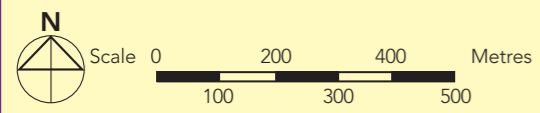


SEMBAWANG Town Map



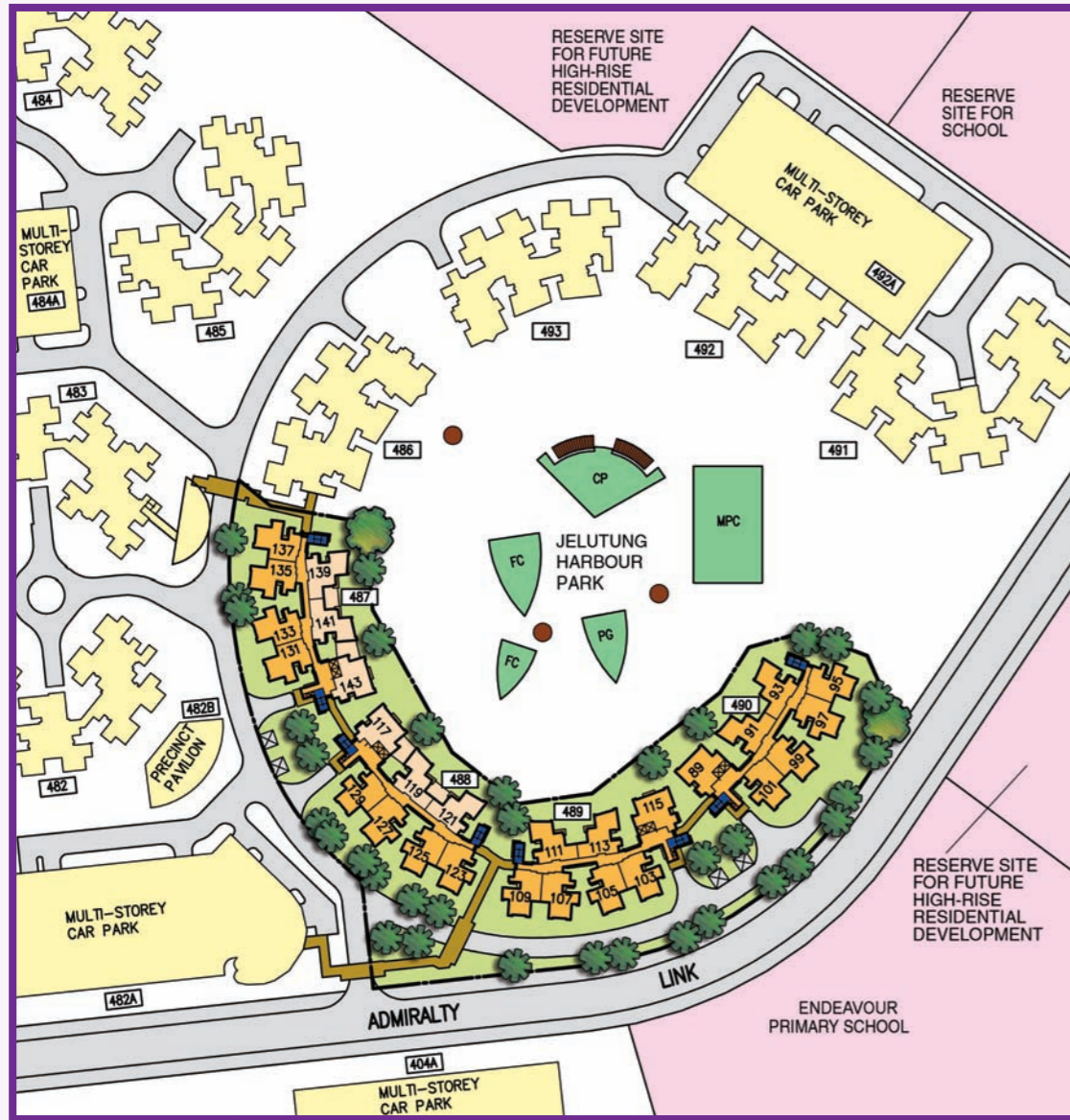
- LEGEND:**
- Contracts with Premium Flats
 - Contract with Standard Flats
 - MRT Line & Station
 - Future Road
 - (u/c) Under Construction
 - Existing Eating Establishment/Minimart/Shops
 - Existing Shops/Minimart

Notes:
 All proposed developments are subject to change and planning approval.
 Proposed Civic & Community Institution includes examples like Community Centre/Club, Home for the Aged, Association, etc., subject to change and planning approval.
 Proposed Health & Medical Care (eg. Nursing Home), subject to change and planning approval.
 Proposed Place of Worship includes examples like Church, Mosque, Chinese Temple, Hindu Temple, etc., subject to change and planning approval.

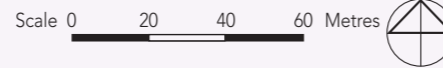


The information contained herein is subject to change at any time without notice and cannot form part of an offer or contract. The proposed facilities and their locations as shown are only estimates. The implementation of the facilities is subject to review by the Government or competent authorities. While reasonable care has been taken in providing this information, HDB shall not be responsible in any way for any damage or loss suffered by any person whether directly or indirectly as a result of reliance on the said information or as a result of any error or omission therein.

Sembawang Green



Sembawang N4 C15 Standard Flats



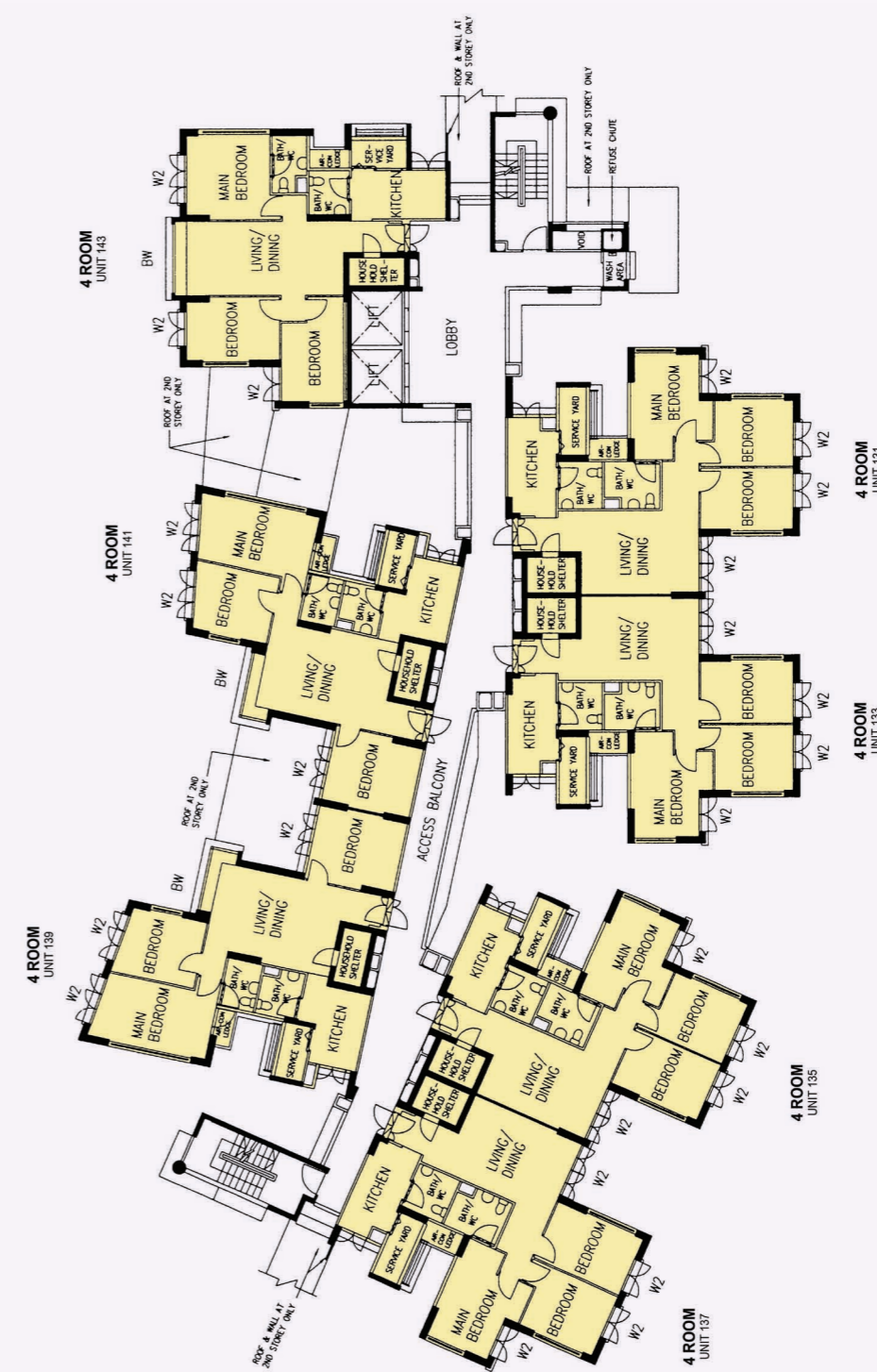
LEGEND:

- Residential Units
- Surrounding Buildings
- Space for Future Community Facilities at 1st Storey
- Reserved for / Existing Development
- Existing Children Playground (PG) / Fitness Corner (FC) / Multi-Purpose Court (MPC) / Community Plaza (CP)
- Linkway
- Existing Shelter/Pergola
- Open Space
- Staircase
- Service Bay
- Centralised Refuse Chute (CRC)
- Lift



Artist's Impression

The information contained herein is subject to change at any time without notice and cannot form part of an offer or contract. The proposed facilities and their locations as shown are only estimates. The implementation of the facilities is subject to review by the Government or competent authorities. While reasonable care has been taken in providing this information, HDB shall not be responsible in any way for any damage or loss suffered by any person whether directly or indirectly as a result of reliance on the said information or as a result of any error or omission therein.



LEGEND:

- 4 Room



2ND TO 16TH STOREY FLOOR PLAN BLOCK 487

Additional Features:

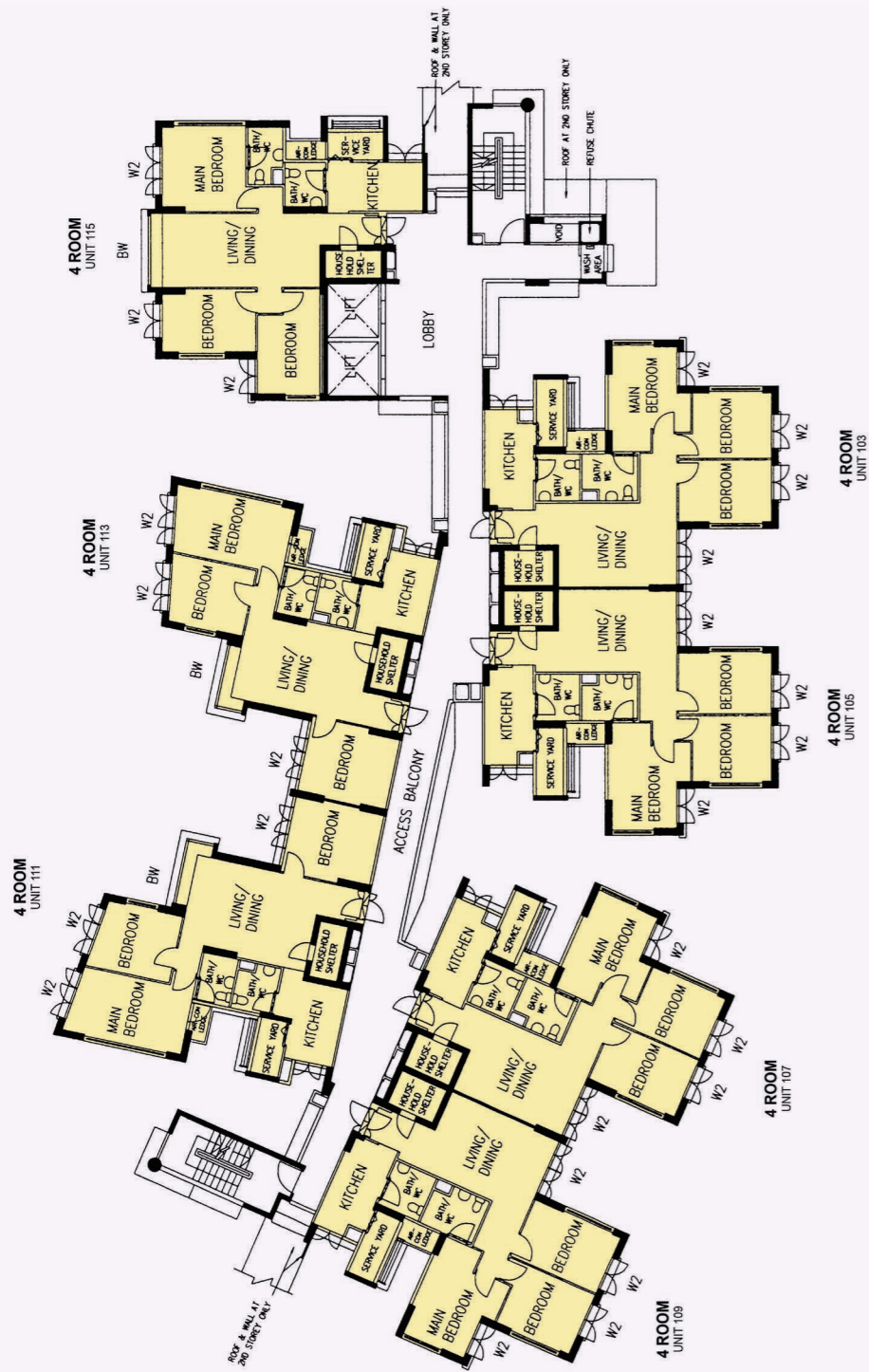
- Bedroom : Decorative Semi-Solid Timber Doors (Type D9)
- Bathrooms/WC : Laminated semi-Solid Timber Doors (Type D9a)
- Ceramic Tiles to Bathrooms/WC/Kitchen Floor
- Ceramic Tiles with Tile Skirting to Service Yard Floor
- Ceramic Tiles to Household Shelter
- Concealed Electrical Wiring & Water Supply Pipes

BW - Bay Window (approx. 500mm high parapet wall)
 W1 - Three Quarter Height Window (approx. 500mm high parapet wall)
 W2 - Three Quarter Height Window (approx. 700mm high parapet wall)
 Unless otherwise indicated all windows will be standard height windows.

The coloured floor plan is not intended to demarcate the boundary of the flat.

Additional Features:

- Bedroom : Decorative Semi-Solid Timber Doors (Type D9)
- Bathrooms/WC : Laminated semi-Solid Timber Doors (Type D9a)
- Ceramic Tiles to Bathrooms/WC/Kitchen Floor
- Ceramic Tiles with Tile Skirting to Service Yard Floor
- Ceramic Tiles to Household Shelter
- Concealed Electrical Wiring & Water Supply Pipes



**2ND TO 18TH STOREY FLOOR PLAN
BLOCK 489**

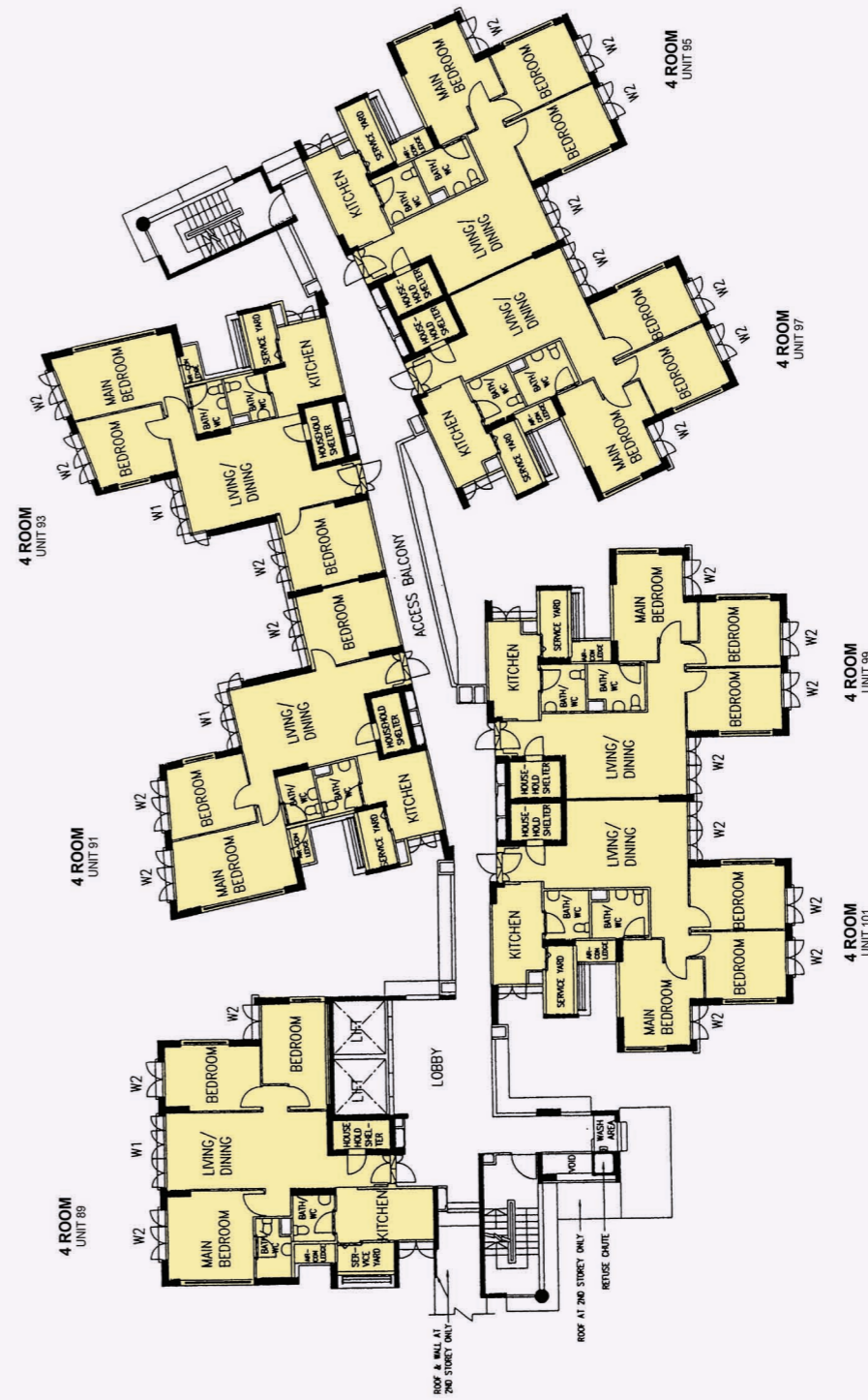
The coloured floor plan is not intended to demarcate the boundary of the flat.

- **LEGEND:**
 4 Room
- SCALE 0 2 4 6 8 10 METRES
- BW - Bay Window (approx. 500mm high parapet wall)
- W1 - Three Quarter Height Window (approx. 500mm high parapet wall)
- W2 - Three Quarter Height Window (approx. 700mm high parapet wall)

Unless otherwise indicated all windows will be standard height windows.

Additional Features:

- Bedroom : Decorative Semi-Solid Timber Doors (Type D9)
- Bathrooms/WC : Laminated semi-Solid Timber Doors (Type D9a)
- Ceramic Tiles to Bathrooms/WC/Kitchen Floor
- Ceramic Tiles with Tile Skirting to Service Yard Floor
- Ceramic Tiles to Household Shelter
- Concealed Electrical Wiring & Water Supply Pipes

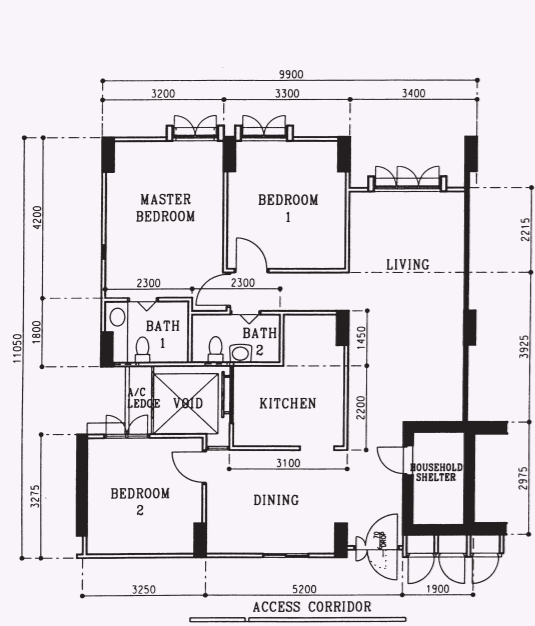


**2ND TO 18TH STOREY FLOOR PLAN
BLOCK 490**

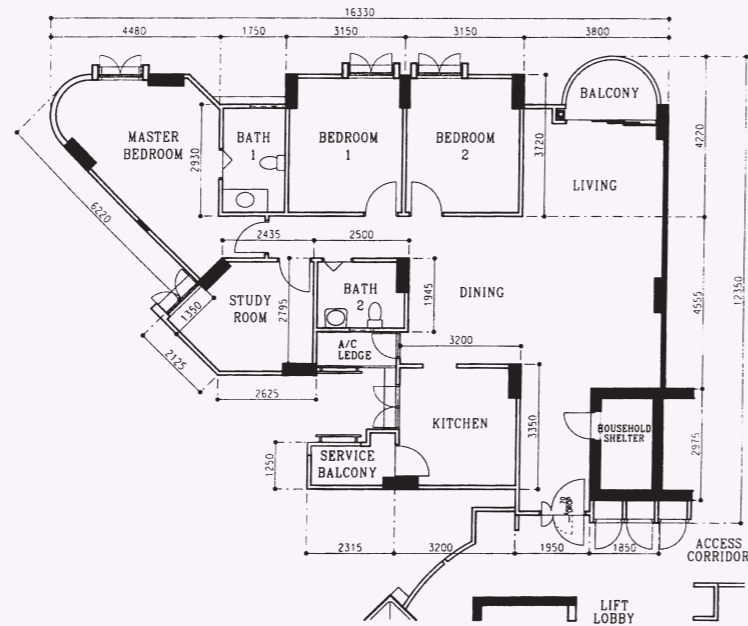
The coloured floor plan is not intended to demarcate the boundary of the flat.

- **LEGEND:**
 4 Room
- SCALE 0 2 4 6 8 10 METRES
- BW - Bay Window (approx. 500mm high parapet wall)
- W1 - Three Quarter Height Window (approx. 500mm high parapet wall)
- W2 - Three Quarter Height Window (approx. 700mm high parapet wall)

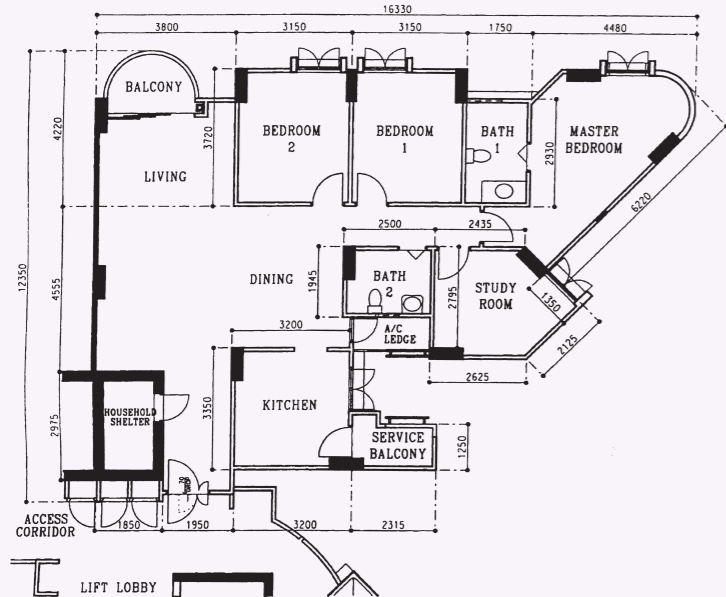
Unless otherwise indicated all windows will be standard height windows.



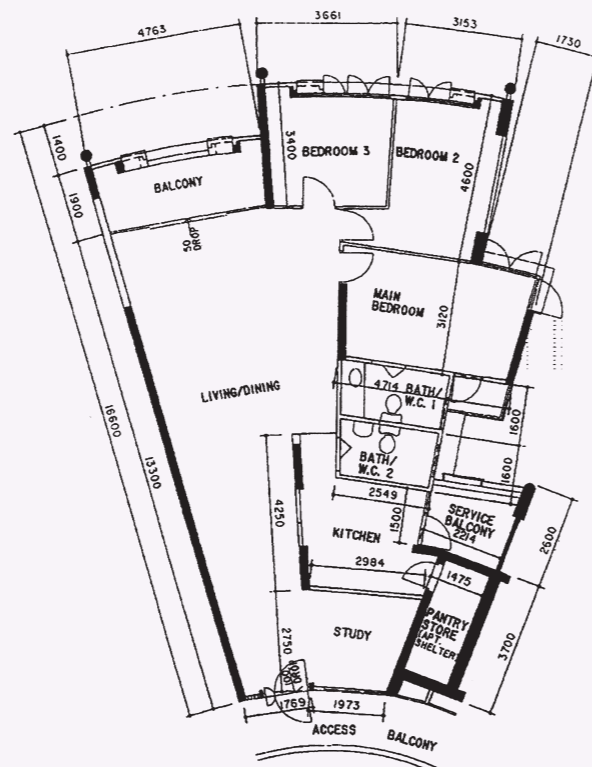
**Premium Flat
4 - Room
Sun Bliss
SB N3 C17
Block 360C, #04-44****



**Premium Flat
Executive
Sun Bliss
SB N3 C17
Block 357B, #07-144**



**Premium Flat
Executive
Sun Bliss
SB N3 C17
Block 360B, #06-58**



**Premium Flat
Executive
Sun Bliss
SB N4 C5
Block 468A, #07-127****

**This is a Repurchased Flat
Photographs and the revised floor plan (if any) can be viewed at www.hdb.gov.sg/esales.