



**WOODLEIGH**  
*Glen*

**HDB Sales Launch – November 2016**



## Green Haven

Located within the Bidadari estate, Woodleigh Glen is bounded by Upper Serangoon Road, Bartley Road, Bidadari Park Drive and Woodleigh Link. This development is located near the Woodleigh MRT station.

Woodleigh Glen comprises 8 residential blocks ranging from 8 to 14 storeys in height and offers 688 units of 2-room Flexi, 3-, and 4-room flats. In addition, one other residential block within Woodleigh Glen will be set aside for rental housing, making a total of 9 residential blocks in this development. This development is located near the proposed Bidadari Park as well as next to a hillock, which is a significant stopover site for migratory birds.

The name 'Woodleigh Glen' takes inspiration from the development's design, where residential blocks are located along its perimeter, creating a central space that resembles a valley, or a 'Glen'. This central space is the heart of the development, housing various recreational and outdoor facilities amid landscaped spaces. This central space also serves as a good venue for leisurely strolls after a hectic day at work.

Please refer to the site plan to find out more about the facilities in Woodleigh Glen. As this is a public housing development, facilities in this project will be opened to the public.



**Important Notes**

HDB precincts are planned to serve the evolving needs of the community. There are spaces catered for future inclusion of amenities/facilities (such as childcare centres, elderly-related facilities, education centres, residents' committee centres and day activity centres), commercial facilities (such as shops and eating houses), mechanical and electrical rooms and such other facilities depending on the prevailing needs. These spaces could be in the void decks, common property, car parks or stand-alone community buildings.

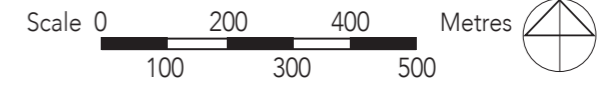
To facilitate your flat selection, we have provided information on the surrounding land use, proposed facilities and their locations in the maps and plans in this brochure. As the information provided is based on the current planning intent of the relevant government agencies, they are indicative only and are subject to review from time to time.

# BIDADARI ESTATE (In Toa Payoh Town)



**LEGEND:**

- MRT Line & Station
- MRT Line (U/C)
- Under Construction / Future Road
- Common Green (u/c) Under Construction



- # Area currently occupied by Mount Vernon Columbarium including the funeral parlours is earmarked for the developments in Bidadari Estate. Plans to relocate the niches have been announced by NEA on 28 Oct 2015.
- \*\* Part of the existing Mount Vernon Columbarium site has been set aside for a new and modern Mount Vernon Funeral Parlour (MVFP).
- ## The Proposed Alkaff Lake will also serve as a stormwater retention pond.
- + Designated park space that will be kept rustic and the landscaping will be kept as natural as possible.

**Notes:**  
 All proposed developments are subject to change and planning approval.  
 Proposed Place of Worship includes examples like Church, Mosque, Chinese Temple, Hindu Temple, etc., subject to change and planning approval.  
 Proposed Civic & Community Institution includes examples like Community Centre/Club, Association, Home for the Aged, etc., subject to change and planning approval.  
 Proposed Health & Medical Care include examples such as Hospitals, Polyclinics, Clinics, Nursing Homes and Eldercare Facilities, etc, subject to change and planning approval.  
 The proposed facilities and their locations as shown are indicative only. The proposed facilities may include other ancillary uses allowed under URA's prevailing Development Control guidelines. For example, places of worship may also include columbarium as an ancillary use, while community centres may also include childcare centres. The implementation of the facilities is subject to review from time to time by the relevant authorities.

The information contained herein is subject to change at any time without notice and cannot form part of an offer or contract. While reasonable care has been taken in providing this information, HDB shall not be responsible in any way for any damage or loss suffered by any person whether directly or indirectly as a result of reliance on the said information or as a result of any error or omission therein.

## Eco-Friendly Living

To encourage a 'green' lifestyle, Woodleigh Glen will have several eco-friendly features:

- Separate chutes for recyclable waste
- Motion sensor-controlled energy efficient lighting at staircases to reduce energy consumption
- Regenerative lifts to reduce energy consumption
- Eco-pedestals in bathrooms to encourage water conservation
- Bicycle stands to encourage cycling as an environmentally friendly form of transport
- Parking spaces to facilitate car-sharing schemes
- Use of sustainable and recycled products in the development
- Pneumatic Waste Conveyance System to provide cleaner waste disposal



Eco-pedestals



Separate chutes for recyclable waste



Bicycle stands

## Beautiful Homes

Woodleigh Glen offers 2-room Flexi, 3- and 4-room flats

The 2-room Flexi flats come in 2 sizes: 36 sqm and 45 sqm, and are available either on a 99-year lease or short-lease. These flats will come with

- floor finishes in the kitchen, household shelter, and bathroom
- wall tiles provided in the bathroom and kitchen
- sliding partition/ door for the bedroom and folding bathroom door

As the 2-room Flexi flats on short leases are meant for the elderly, they will be fitted with grab bars.

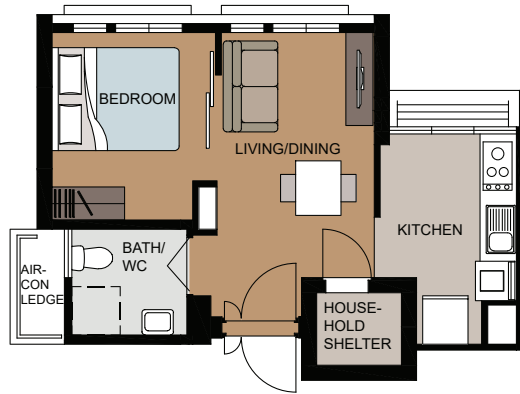
The 3- and 4-room flats will come with floor finishes in the kitchen, household shelter and bathrooms. Wall tiles will also be provided in the bathrooms and kitchen.

All new HDB flats have Universal Design features such as wider corridors, ramps instead of steps to allow for ageing in place.

## Optional Component Scheme

The Optional Component Scheme provides convenience for our buyers, and is offered on an opt-in basis. Please refer to the attached Optional Component Scheme leaflets for details. The cost of the optional components will be added to the selling price of the flat.

## Without Living / Dining / Bedroom Floor Finishes (Default)

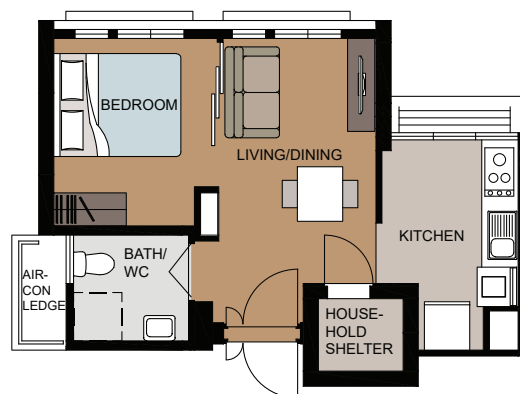


### LAYOUT IDEAS FOR 2 ROOM FLEXI (TYPE 1)

APPROX. FLOOR AREA 38 sqm

(Inclusive of Internal Floor Area of 36 sqm and Air-Con Ledge)

## With Living / Dining / Bedroom Floor Finishes



### LAYOUT IDEAS FOR 2 ROOM FLEXI (TYPE 1)

APPROX. FLOOR AREA 38 sqm

(Inclusive of Internal Floor Area of 36 sqm and Air-Con Ledge)



**LAYOUT IDEAS FOR 2 ROOM FLEXI (TYPE 2)**  
APPROX. FLOOR AREA 47 sqm  
(Inclusive of Internal Floor Area of 45 sqm and Air-Con Ledge)

## Open Kitchen Concept (Default)

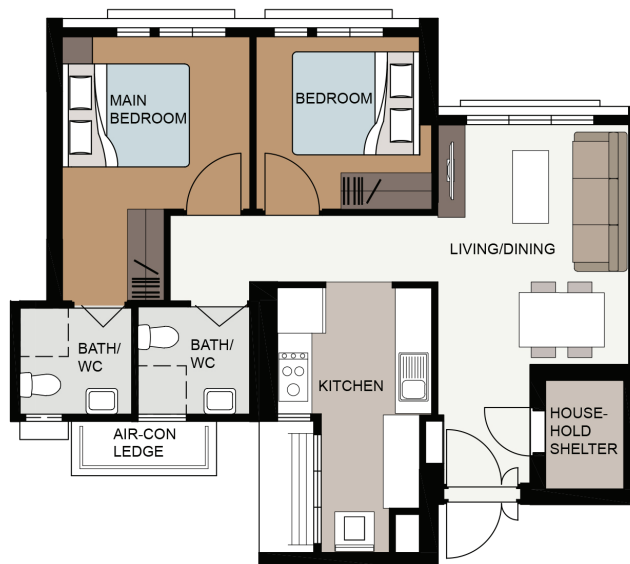


## LAYOUT IDEAS FOR 3 ROOM

APPROX. FLOOR AREA 68 sqm

(Inclusive of Internal Floor Area of 65 sqm and Air-Con Ledge)

## With Kitchen Partition Wall



## LAYOUT IDEAS FOR 3 ROOM

APPROX. FLOOR AREA 68 sqm

(Inclusive of Internal Floor Area of 65 sqm and Air-Con Ledge)

## Open Kitchen Concept (Default)

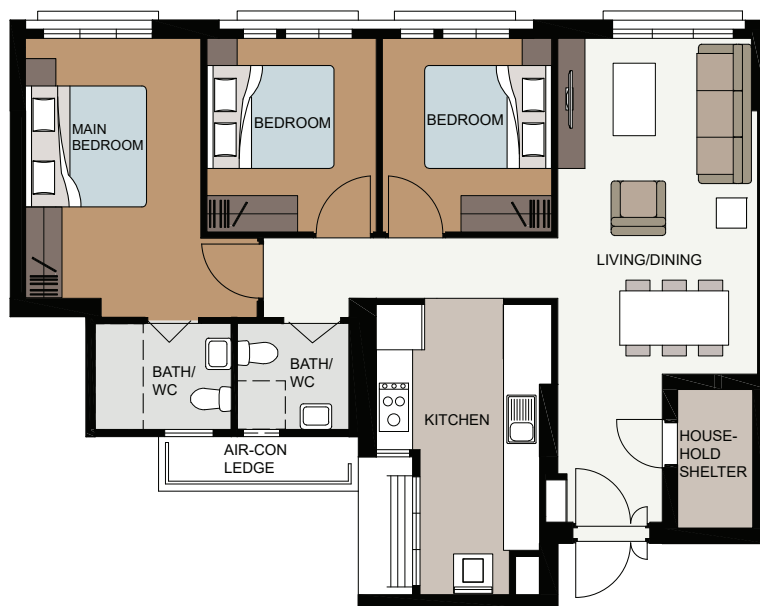


## LAYOUT IDEAS FOR 4 ROOM

APPROX. FLOOR AREA 94 sqm

(Inclusive of Internal Floor Area of 90 sqm and Air-Con Ledge)

## With Kitchen Partition Wall

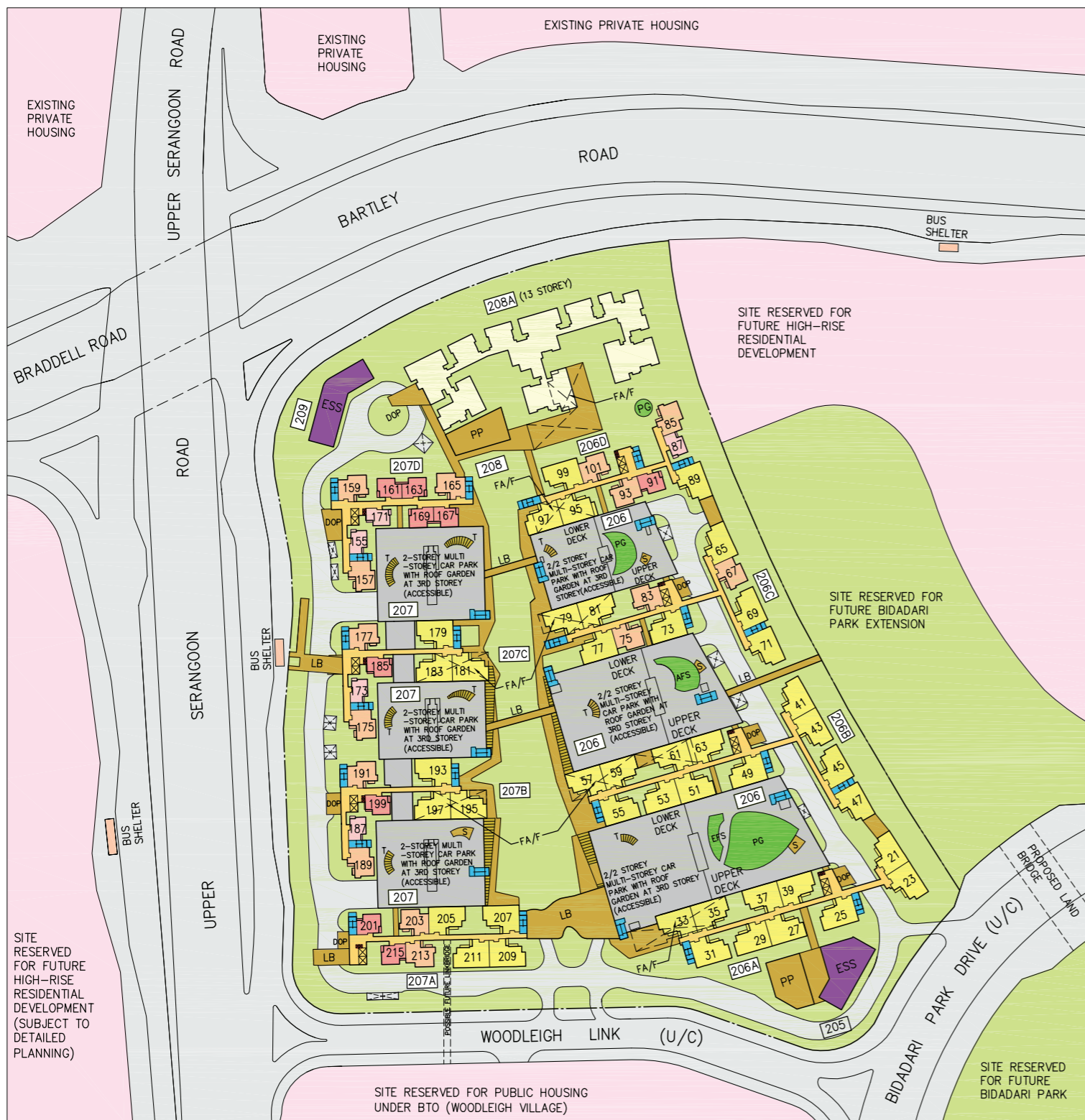


## LAYOUT IDEAS FOR 4 ROOM

APPROX. FLOOR AREA 94 sqm

(Inclusive of Internal Floor Area of 90 sqm and Air-Con Ledge)





**LEGEND**

- 2-Room Flexi (Type 1)
- 2-Room Flexi (Type 2)
- 3-Room
- 4-Room
- Rental Flats – Not available for sale to public
- Drop-off Porch (DOP) / Linkway / Shelter (S) / Precinct Pavilion (PP) / Linkbridge (LB)
- Trellis (T)
- Children Playground (PG) / Adult Fitness Station (AFS)/ Elderly Fitness Station (EFS)
- Electrical Sub-station (ESS) at 1st storey
- Multi-Storey Car Park
- Future Amenities / Facilities (FA/F) at 1st storey
- Open Space
- Staircase
- Reserved for Development / Existing Development
- Driveway
- Centralised Refuse Chute/ Chute for Recyclable Refuse (Pneumatic Waste Conveyance System)
- Corridor
- Lift
- Service Bay
- (UC) Under Construction

**Home Ownership Flats**

| Block Number | Number of Storeys | 2- Room Flexi |           | 3 Room     | 4 Room     | Total      | Lift opens at |
|--------------|-------------------|---------------|-----------|------------|------------|------------|---------------|
|              |                   | (Type 1)      | (Type 2)  |            |            |            |               |
| 206A         | 9/14              | -             | -         | -          | 104        | 104        | Every Storey  |
| 206B         | 9/14              | -             | -         | -          | 112        | 112        | Every Storey  |
| 206C         | 9/14              | -             | -         | 28         | 62         | 90         | Every Storey  |
| 206D         | 9/14              | 6             | 11        | 29         | 40         | 86         | Every Storey  |
| 207A         | 14                | -             | 19        | 22         | 44         | 85         | Every Storey  |
| 207B         | 8/14              | 5             | 11        | 13         | 33         | 62         | Every Storey  |
| 207C         | 8/14              | 5             | 11        | 13         | 33         | 62         | Every Storey  |
| 207D         | 8/14              | 16            | 46        | 25         | -          | 87         | Every Storey  |
| <b>Total</b> |                   | <b>32</b>     | <b>98</b> | <b>130</b> | <b>428</b> | <b>688</b> |               |

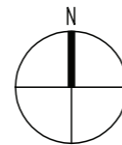
Rental Flats – 1 Block Comprising 168 Units of 1 Room and 144 Units of 2 Room Rental Flats

The information contained herein is subject to change at any time without notice and cannot form part of an offer or contract. While reasonable care has been taken in providing this information, HDB shall not be responsible in any way for any damage or loss suffered by any person whether directly or indirectly as a result of reliance on the said information or as a result of any error or omission therein.



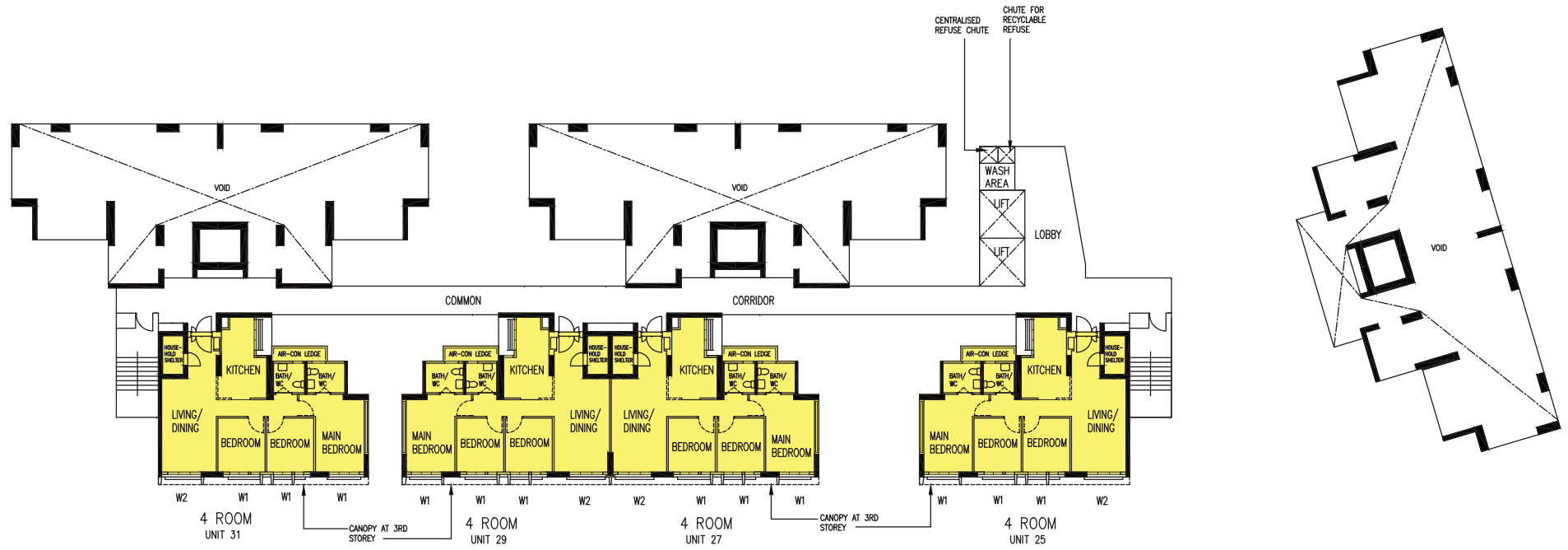
Applicants are encouraged to visit the place before booking a flat.

SCALE 0 10 20 30 40 50 METRES



**Notes:**

- All proposed developments are subject to change and planning approval.
- The proposed facilities and their locations as shown are indicative only. The proposed facilities may include other ancillary uses allowed under URA's prevailing Development Control guidelines. For example, places of worship may also include columbarium as an ancillary use, while community centres may also include childcare centres. The implementation of the facilities is subject to review from time to time by the relevant authorities.
- The use of the void deck in any apartment block, common property (such as precinct pavilion), car park or stand-alone community building for future amenities/facilities (such as childcare centres, elderly-related facilities, education centres, residents' committee centres and day activity centres), commercial facilities (such as shops and eating houses), mechanical and electrical rooms and such other facilities is subject to review from time to time.
- The residential blocks may be completed ahead of the proposed precinct facilities, so that flat buyers are able to collect the keys to their new homes earlier.
- Unless otherwise indicated in the sales brochure, all facilities within the project, including but not limited to roof gardens and sky terraces (if any), will be open to the public.



BLOCK 206A  
(3RD STOREY FLOOR PLAN)

LEGEND:

4 ROOM

UNITS AT AND ABOVE 5TH STOREY ARE HIGHER THAN THE MAIN ROOF GARDEN LEVEL OF BLOCK 206

W1 - Three Quarter Height Window (Approx. 550mm high parapet wall)  
 W2 - Full Height Window (Approx. 300mm high parapet wall)  
 Unless otherwise indicated all windows will be standard height windows.

The coloured floor plan is not intended to demarcate the boundary of the flat.

SCALE 0 2 4 6 8 10 METRES



BLOCK 206A  
(4TH STOREY FLOOR PLAN)

UNITS AT AND ABOVE 5TH STOREY ARE HIGHER THAN THE MAIN ROOF GARDEN LEVEL OF BLOCK 206

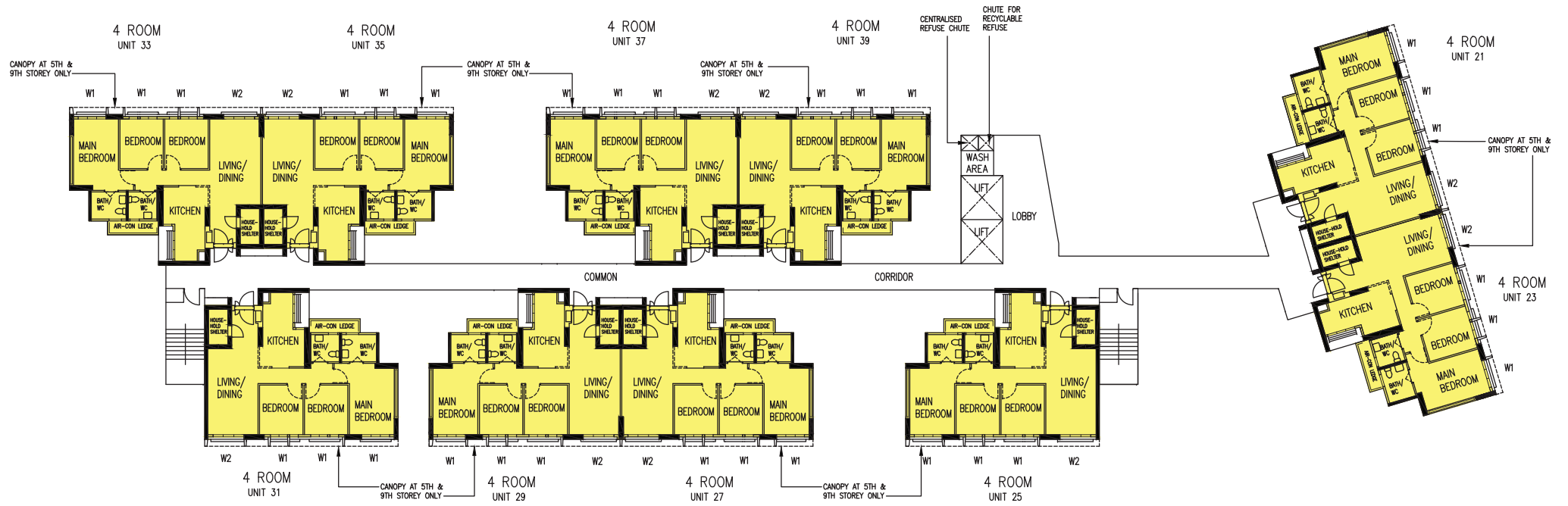
LEGEND:

4 ROOM

W1 - Three Quarter Height Window (Approx. 550mm high parapet wall)  
 W2 - Full Height Window (Approx. 300mm high parapet wall)  
 Unless otherwise indicated all windows will be standard height windows.

SCALE 0 2 4 6 8 10 METRES

The coloured floor plan is not intended to demarcate the boundary of the flat.



BLOCK 206A  
(5TH, 8TH TO 9TH STOREY FLOOR PLAN)

UNITS AT AND ABOVE 5TH STOREY ARE HIGHER THAN THE MAIN ROOF GARDEN LEVEL OF BLOCK 206

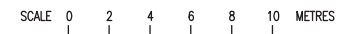
LEGEND:

4 ROOM

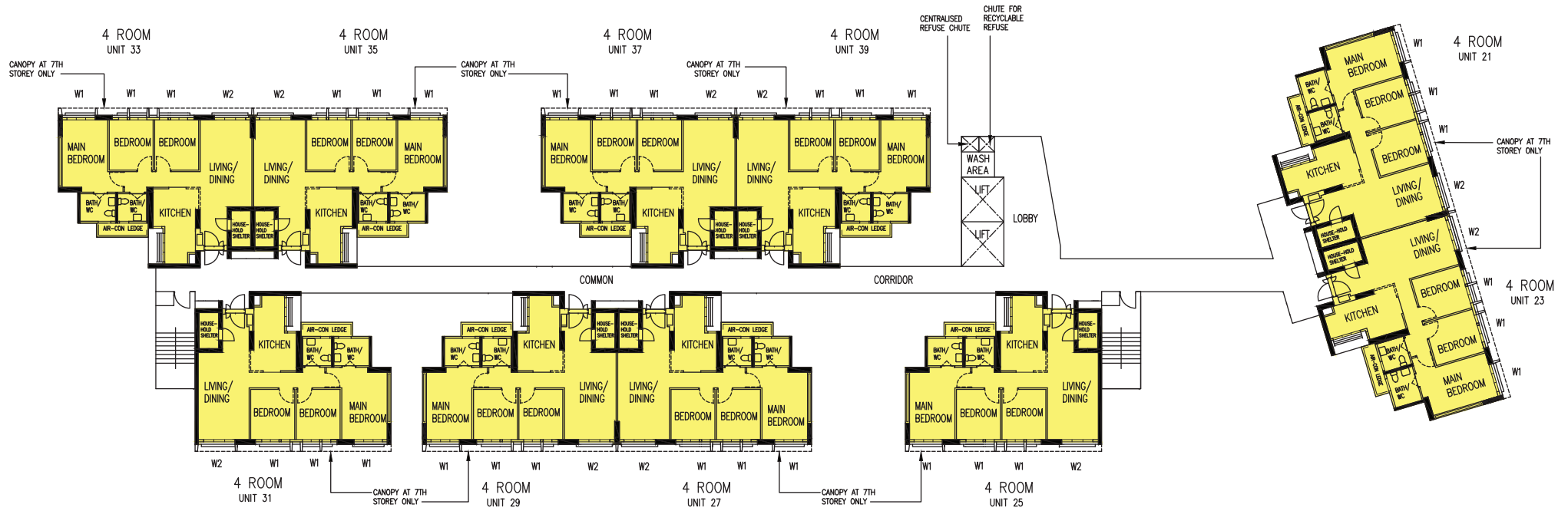
W1 - Three Quarter Height Window (Approx. 550mm high parapet wall)

W2 - Full Height Window (Approx. 300mm high parapet wall)

Unless otherwise indicated all windows will be standard height windows.



The coloured floor plan is not intended to demarcate the boundary of the flat.



BLOCK 206A  
(6TH TO 7TH STOREY FLOOR PLAN)

UNITS AT AND ABOVE 5TH STOREY ARE HIGHER THAN THE MAIN ROOF GARDEN LEVEL OF BLOCK 206

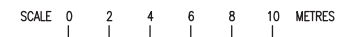
LEGEND:

4 ROOM

W1 - Three Quarter Height Window (Approx. 550mm high parapet wall)

W2 - Full Height Window (Approx. 300mm high parapet wall)

Unless otherwise indicated all windows will be standard height windows.



The coloured floor plan is not intended to demarcate the boundary of the flat.



BLOCK 206A  
(10TH STOREY FLOOR PLAN)

UNITS AT AND ABOVE 5TH STOREY ARE HIGHER THAN THE MAIN ROOF GARDEN LEVEL OF BLOCK 206

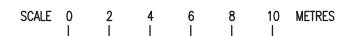
LEGEND:

4 ROOM

W1 - Three Quarter Height Window (Approx. 550mm high parapet wall)

W2 - Full Height Window (Approx. 300mm high parapet wall)

Unless otherwise indicated all windows will be standard height windows.



The coloured floor plan is not intended to demarcate the boundary of the flat.



BLOCK 206A  
(11TH STOREY FLOOR PLAN)

UNITS AT AND ABOVE 5TH STOREY ARE HIGHER THAN THE MAIN ROOF GARDEN LEVEL OF BLOCK 206

LEGEND:

4 ROOM

W1 - Three Quarter Height Window (Approx. 550mm high parapet wall)  
 W2 - Full Height Window (Approx. 300mm high parapet wall)  
 Unless otherwise indicated all windows will be standard height windows.

SCALE 0 2 4 6 8 10 METRES

The coloured floor plan is not intended to demarcate the boundary of the flat.



BLOCK 206A  
(12TH TO 13TH STOREY FLOOR PLAN)

UNITS AT AND ABOVE 5TH STOREY ARE HIGHER THAN THE MAIN ROOF GARDEN LEVEL OF BLOCK 206

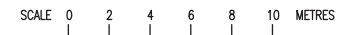
LEGEND:

4 ROOM

W1 - Three Quarter Height Window (Approx. 550mm high parapet wall)

W2 - Full Height Window (Approx. 300mm high parapet wall)

Unless otherwise indicated all windows will be standard height windows.



The coloured floor plan is not intended to demarcate the boundary of the flat.





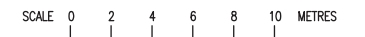
BLOCK 206A  
(14TH STOREY FLOOR PLAN)

UNITS AT AND ABOVE 5TH STOREY ARE HIGHER THAN THE MAIN ROOF GARDEN LEVEL OF BLOCK 206

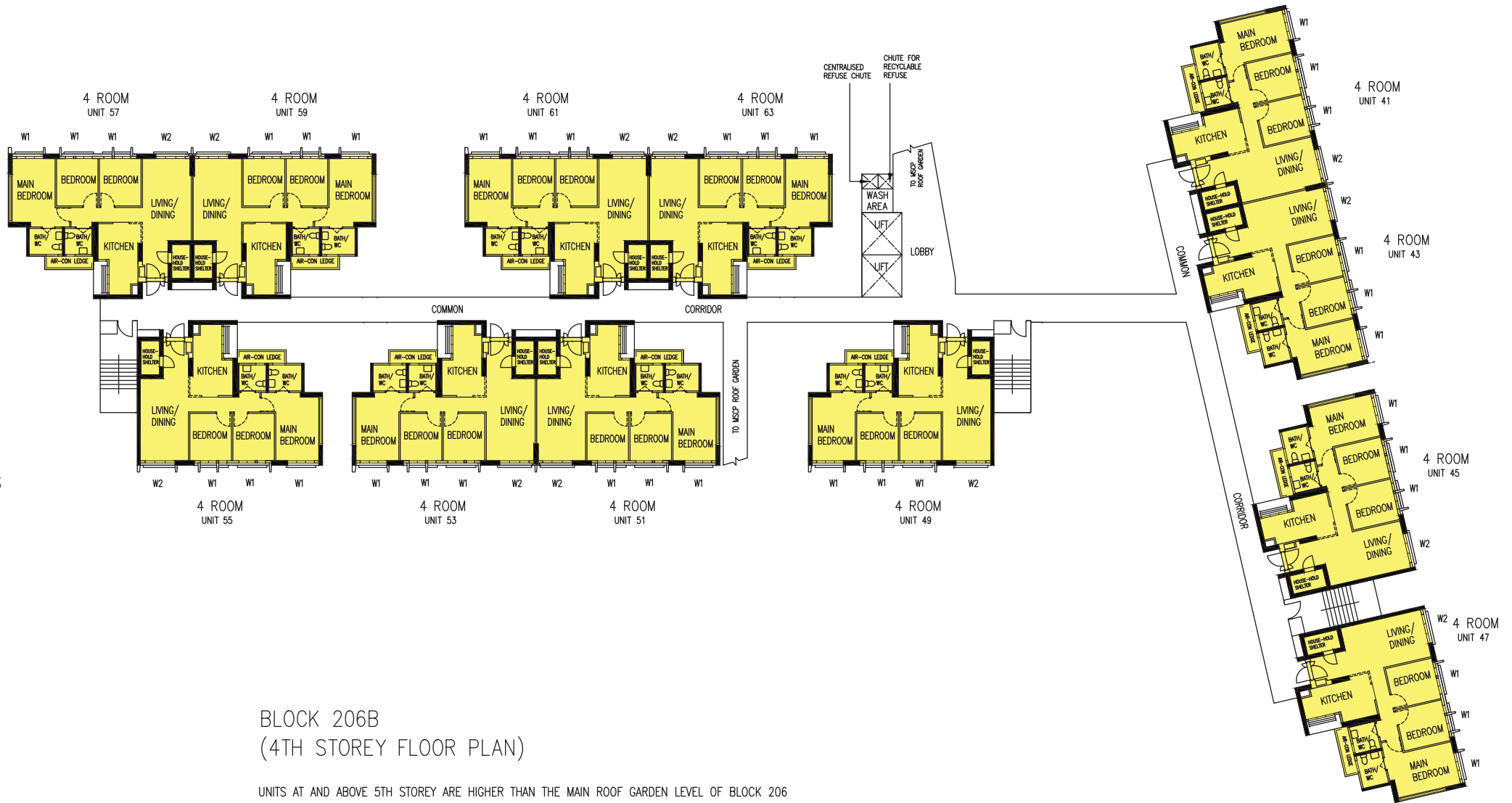
LEGEND:

4 ROOM

W1 - Three Quarter Height Window (Approx. 550mm high parapet wall)  
 W2 - Full Height Window (Approx. 300mm high parapet wall)  
 Unless otherwise indicated all windows will be standard height windows.



The coloured floor plan is not intended to demarcate the boundary of the flat.



BLOCK 206B  
(4TH STOREY FLOOR PLAN)

UNITS AT AND ABOVE 5TH STOREY ARE HIGHER THAN THE MAIN ROOF GARDEN LEVEL OF BLOCK 206

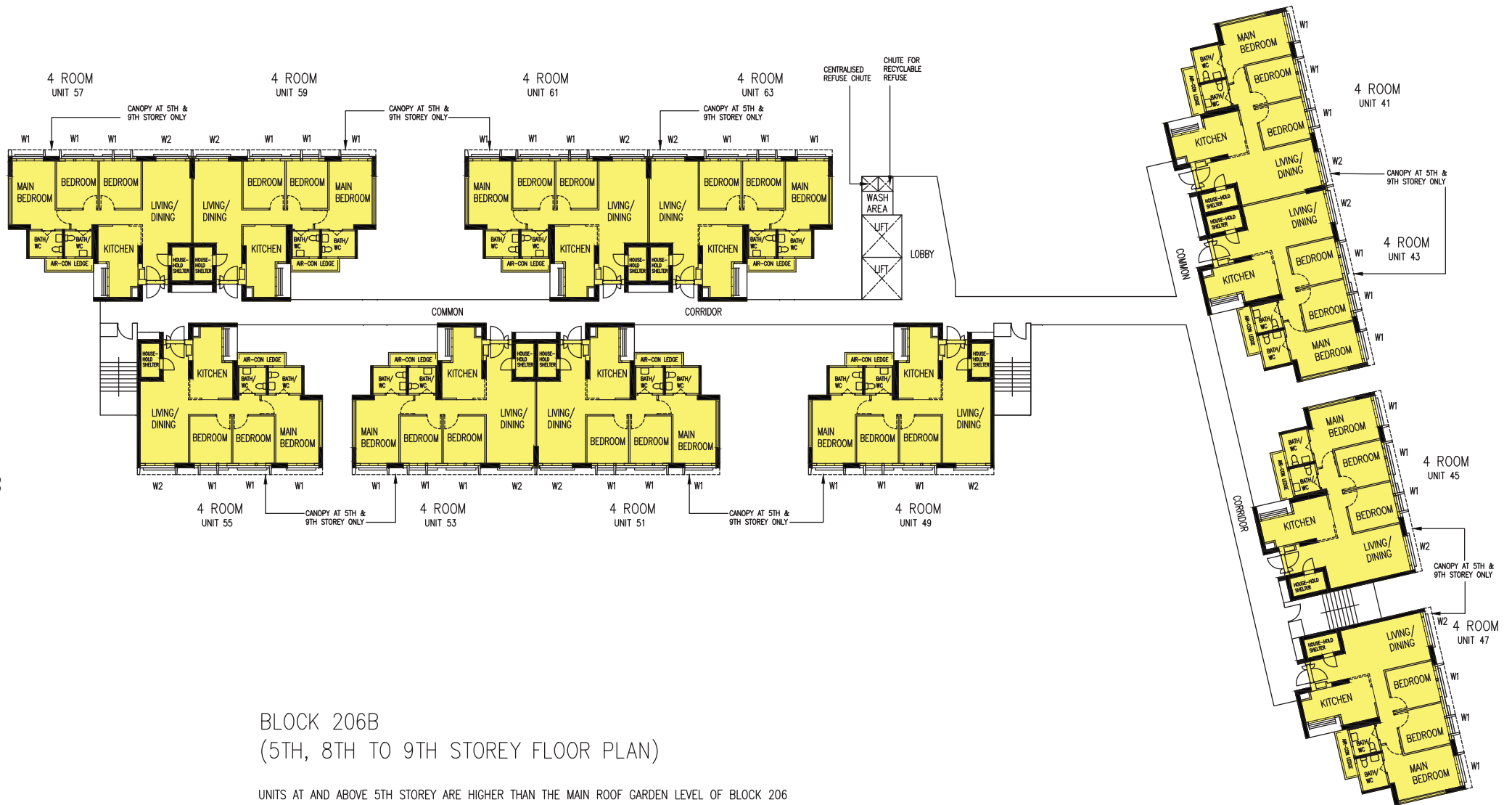
LEGEND:

4 ROOM

W1 - Three Quarter Height Window (Approx. 550mm high parapet wall)  
W2 - Full Height Window (Approx. 300mm high parapet wall)  
Unless otherwise indicated all windows will be standard height windows.

The coloured floor plan is not intended to demarcate the boundary of the flat.

SCALE 0 2 4 6 8 10 METRES



BLOCK 206B  
(5TH, 8TH TO 9TH STOREY FLOOR PLAN)

UNITS AT AND ABOVE 5TH STOREY ARE HIGHER THAN THE MAIN ROOF GARDEN LEVEL OF BLOCK 206

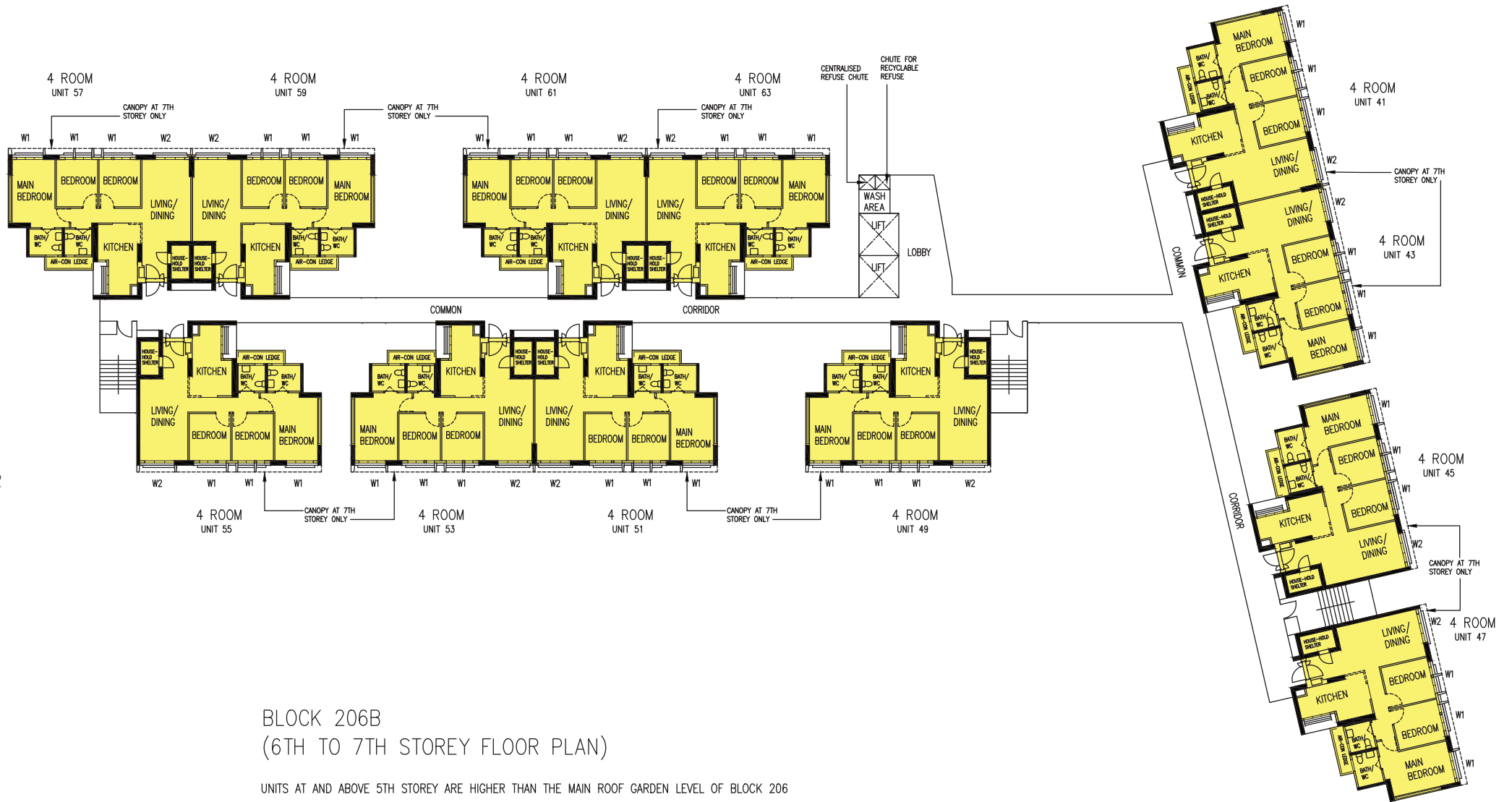
LEGEND:

4 ROOM

W1 - Three Quarter Height Window (Approx. 550mm high parapet wall)  
W2 - Full Height Window (Approx. 300mm high parapet wall)  
Unless otherwise indicated all windows will be standard height windows.

SCALE 0 2 4 6 8 10 METRES

The coloured floor plan is not intended to demarcate the boundary of the flat.



BLOCK 206B  
(6TH TO 7TH STOREY FLOOR PLAN)

UNITS AT AND ABOVE 5TH STOREY ARE HIGHER THAN THE MAIN ROOF GARDEN LEVEL OF BLOCK 206

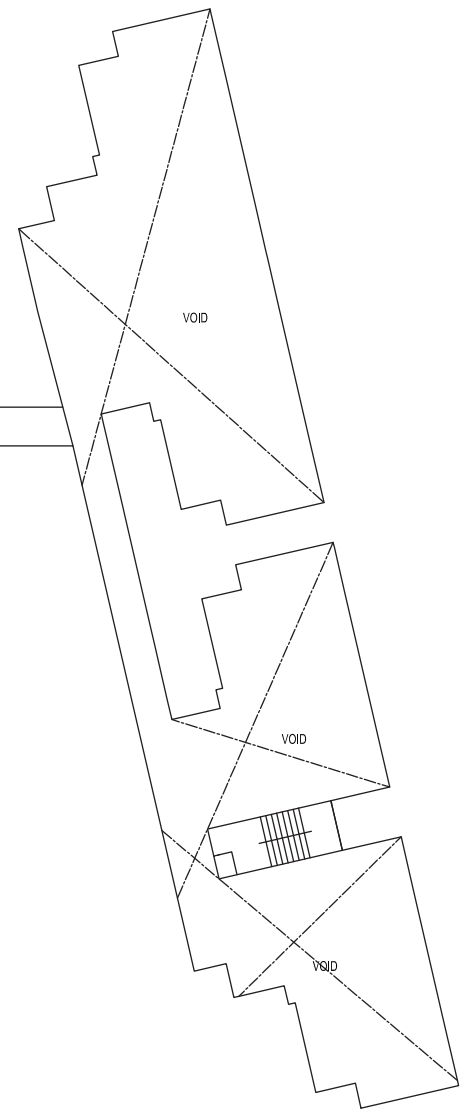
LEGEND:

4 ROOM

W1 - Three Quarter Height Window (Approx. 550mm high parapet wall)  
 W2 - Full Height Window (Approx. 300mm high parapet wall)  
 Unless otherwise indicated all windows will be standard height windows.

The coloured floor plan is not intended to demarcate the boundary of the flat.

SCALE 0 2 4 6 8 10 METRES



BLOCK 206B  
(10TH STOREY FLOOR PLAN)

UNITS AT AND ABOVE 5TH STOREY ARE HIGHER THAN THE MAIN ROOF GARDEN LEVEL OF BLOCK 206

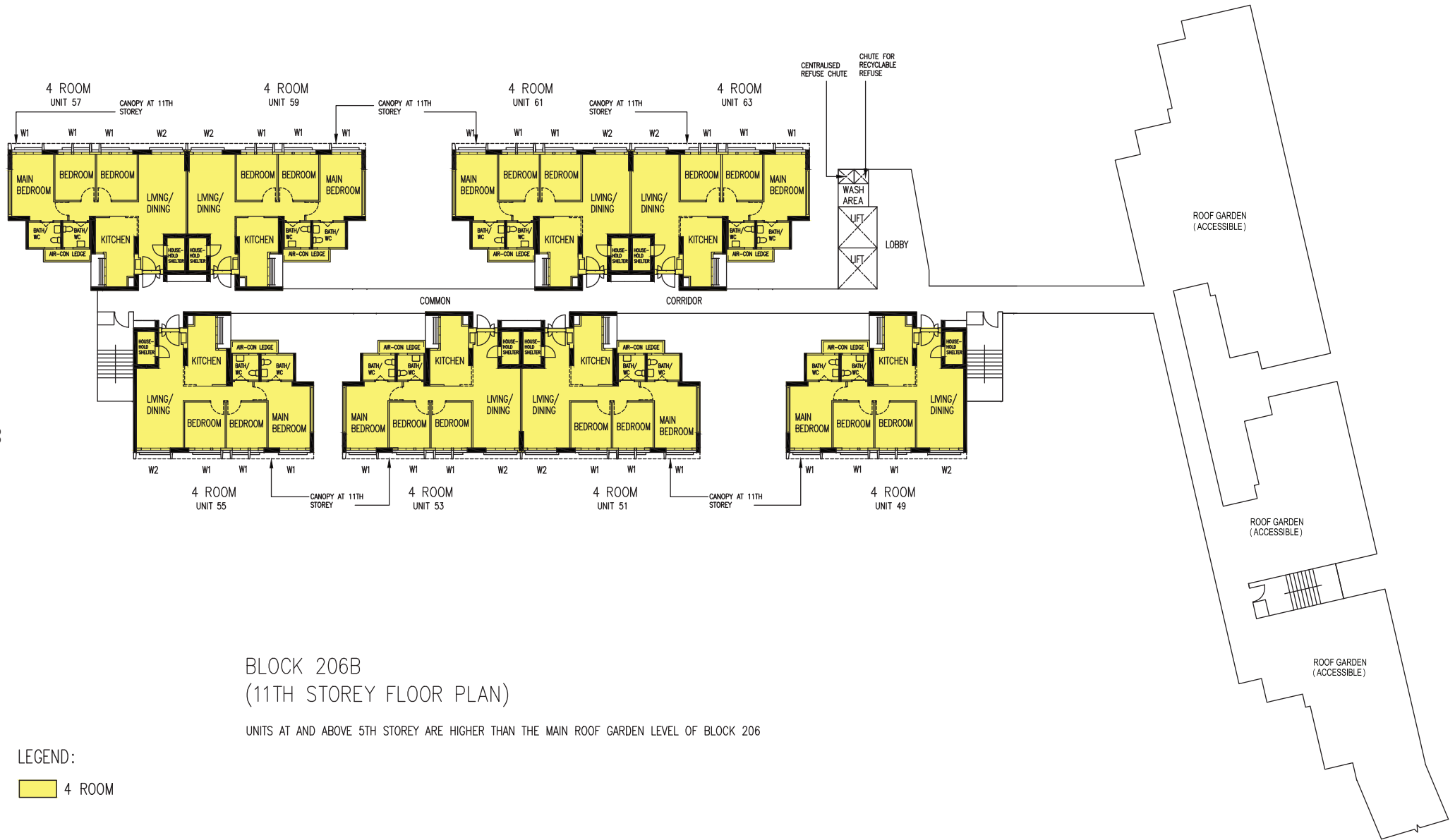
LEGEND:

4 ROOM

W1 - Three Quarter Height Window (Approx. 550mm high parapet wall)  
W2 - Full Height Window (Approx. 300mm high parapet wall)  
Unless otherwise indicated all windows will be standard height windows.

SCALE 0 2 4 6 8 10 METRES

The coloured floor plan is not intended to demarcate the boundary of the flat.



BLOCK 206B  
(11TH STOREY FLOOR PLAN)

UNITS AT AND ABOVE 5TH STOREY ARE HIGHER THAN THE MAIN ROOF GARDEN LEVEL OF BLOCK 206

LEGEND:

4 ROOM

W1 - Three Quarter Height Window (Approx. 550mm high parapet wall)  
W2 - Full Height Window (Approx. 300mm high parapet wall)  
Unless otherwise indicated all windows will be standard height windows.

The coloured floor plan is not intended to demarcate the boundary of the flat.

SCALE 0 2 4 6 8 10 METRES



BLOCK 206B  
(12TH TO 13TH STOREY FLOOR PLAN)

UNITS AT AND ABOVE 5TH STOREY ARE HIGHER THAN THE MAIN ROOF GARDEN LEVEL OF BLOCK 206

LEGEND:

4 ROOM

W1 - Three Quarter Height Window (Approx. 550mm high parapet wall)

W2 - Full Height Window (Approx. 300mm high parapet wall)

Unless otherwise indicated all windows will be standard height windows.



The coloured floor plan is not intended to demarcate the boundary of the flat.



BLOCK 206B  
(14TH STOREY FLOOR PLAN)

UNITS AT AND ABOVE 5TH STOREY ARE HIGHER THAN THE MAIN ROOF GARDEN LEVEL OF BLOCK 206

LEGEND:

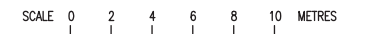
4 ROOM

W1 - Three Quarter Height Window (Approx. 550mm high parapet wall)

W2 - Full Height Window (Approx. 300mm high parapet wall)

Unless otherwise indicated all windows will be standard height windows.

The coloured floor plan is not intended to demarcate the boundary of the flat.







BLOCK 206C  
(4TH STOREY FLOOR PLAN)

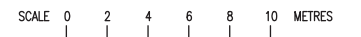
UNITS AT AND ABOVE 5TH STOREY ARE HIGHER THAN THE MAIN ROOF GARDEN LEVEL OF BLOCK 206

LEGEND:

- 3 ROOM
- 4 ROOM

W1 - Three Quarter Height Window (Approx. 550mm high parapet wall)  
 W2 - Full Height Window (Approx. 300mm high parapet wall)  
 Unless otherwise indicated all windows will be standard height windows.

The coloured floor plan is not intended to demarcate the boundary of the flat.





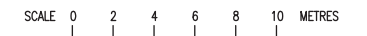
BLOCK 206C  
(5TH, 8TH TO 9TH STOREY FLOOR PLAN)

UNITS AT AND ABOVE 5TH STOREY ARE HIGHER THAN THE MAIN ROOF GARDEN LEVEL OF BLOCK 206

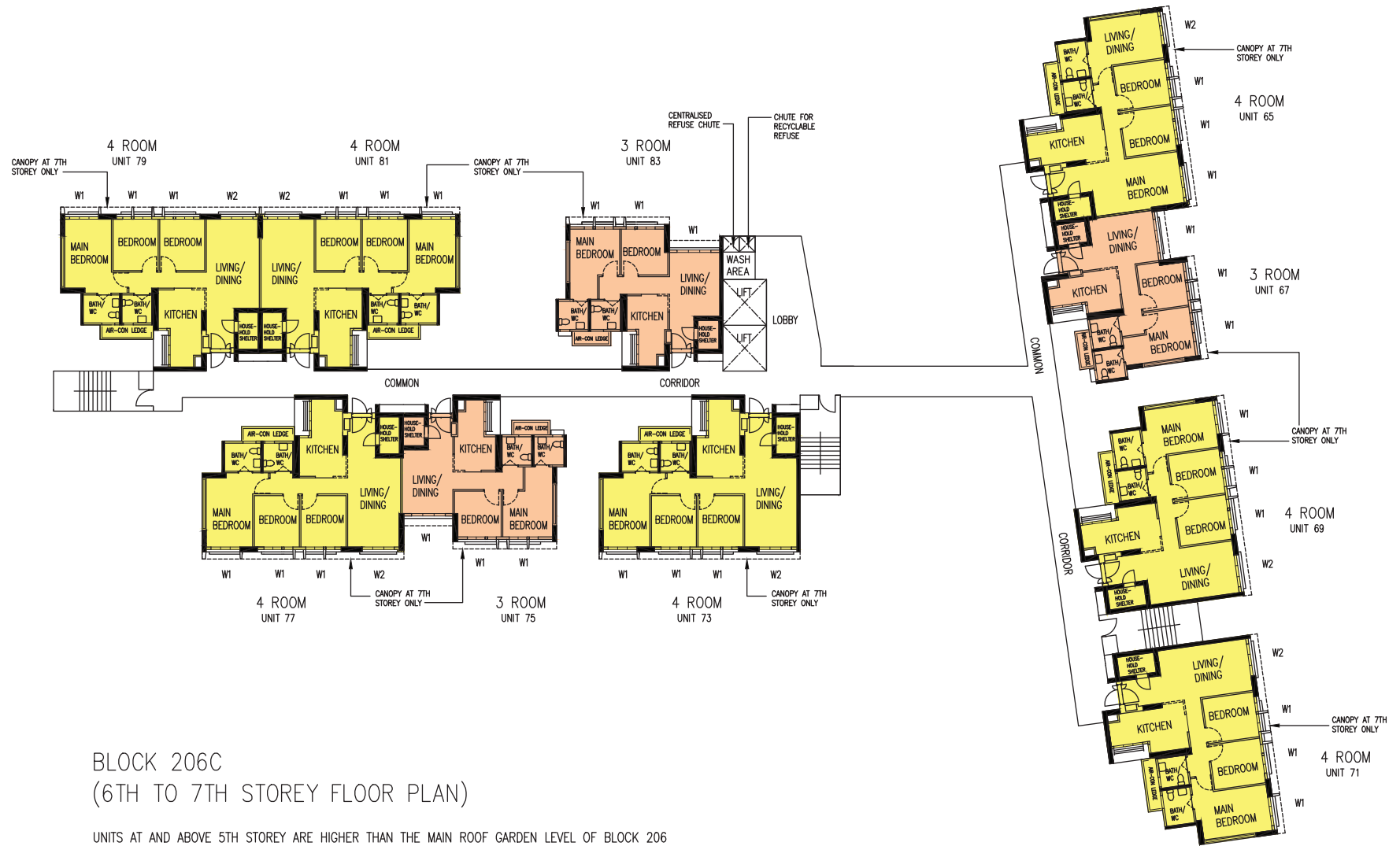
LEGEND:

- 3 ROOM
- 4 ROOM

W1 - Three Quarter Height Window (Approx. 550mm high parapet wall)  
 W2 - Full Height Window (Approx. 300mm high parapet wall)  
 Unless otherwise indicated all windows will be standard height windows.



The coloured floor plan is not intended to demarcate the boundary of the flat.



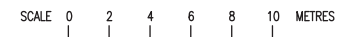
BLOCK 206C  
(6TH TO 7TH STOREY FLOOR PLAN)

UNITS AT AND ABOVE 5TH STOREY ARE HIGHER THAN THE MAIN ROOF GARDEN LEVEL OF BLOCK 206

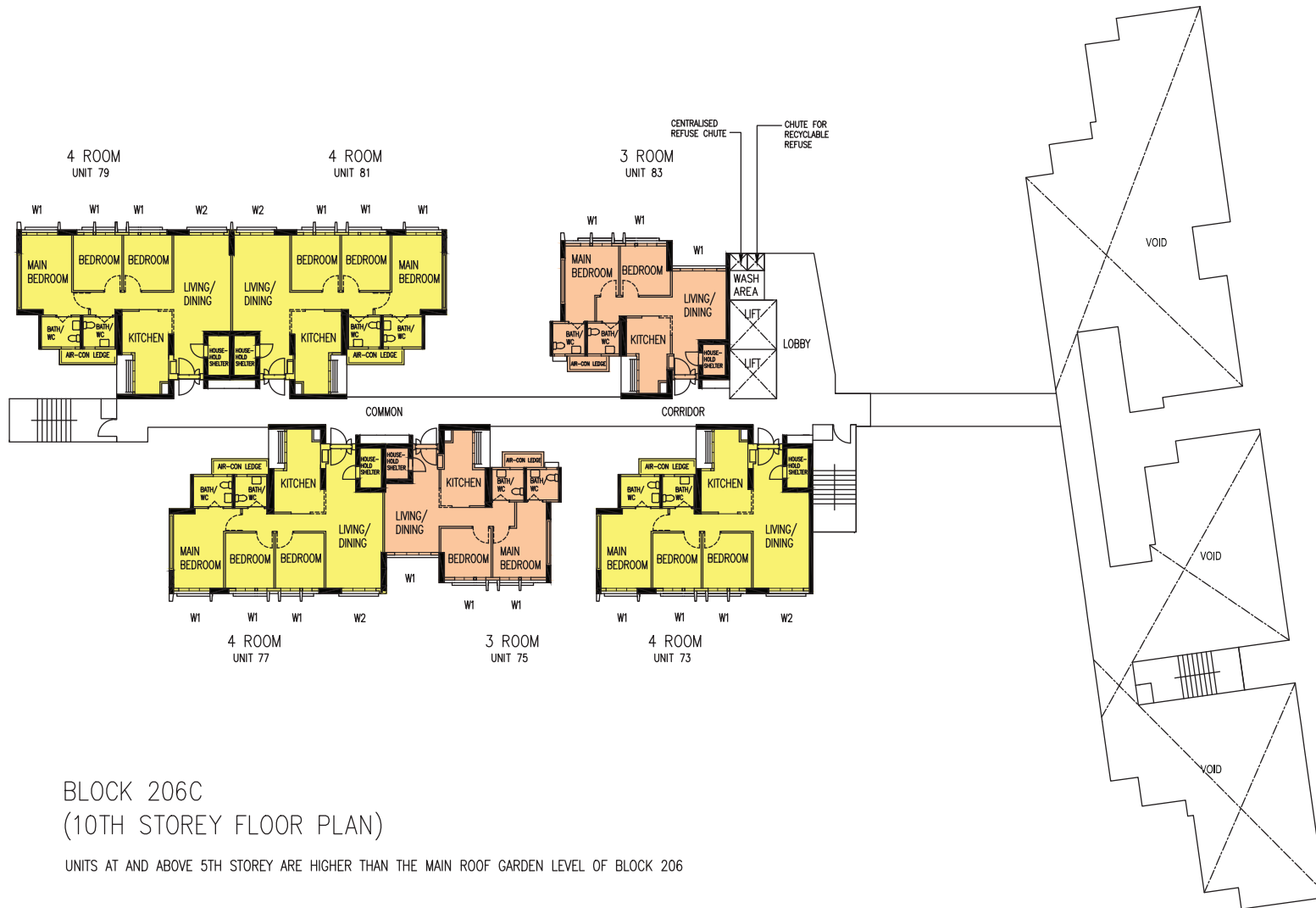
LEGEND:

- 3 ROOM
- 4 ROOM

W1 - Three Quarter Height Window (Approx. 550mm high parapet wall)  
 W2 - Full Height Window (Approx. 300mm high parapet wall)  
 Unless otherwise indicated all windows will be standard height windows.



The coloured floor plan is not intended to demarcate the boundary of the flat.



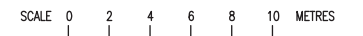
BLOCK 206C  
(10TH STOREY FLOOR PLAN)

UNITS AT AND ABOVE 5TH STOREY ARE HIGHER THAN THE MAIN ROOF GARDEN LEVEL OF BLOCK 206

LEGEND:

- 3 ROOM
- 4 ROOM

W1 - Three Quarter Height Window (Approx. 550mm high parapet wall)  
 W2 - Full Height Window (Approx. 300mm high parapet wall)  
 Unless otherwise indicated all windows will be standard height windows.



The coloured floor plan is not intended to demarcate the boundary of the flat.



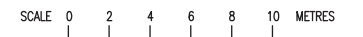
BLOCK 206C  
(11TH STOREY FLOOR PLAN)

UNITS AT AND ABOVE 5TH STOREY ARE HIGHER THAN THE MAIN ROOF GARDEN LEVEL OF BLOCK 206

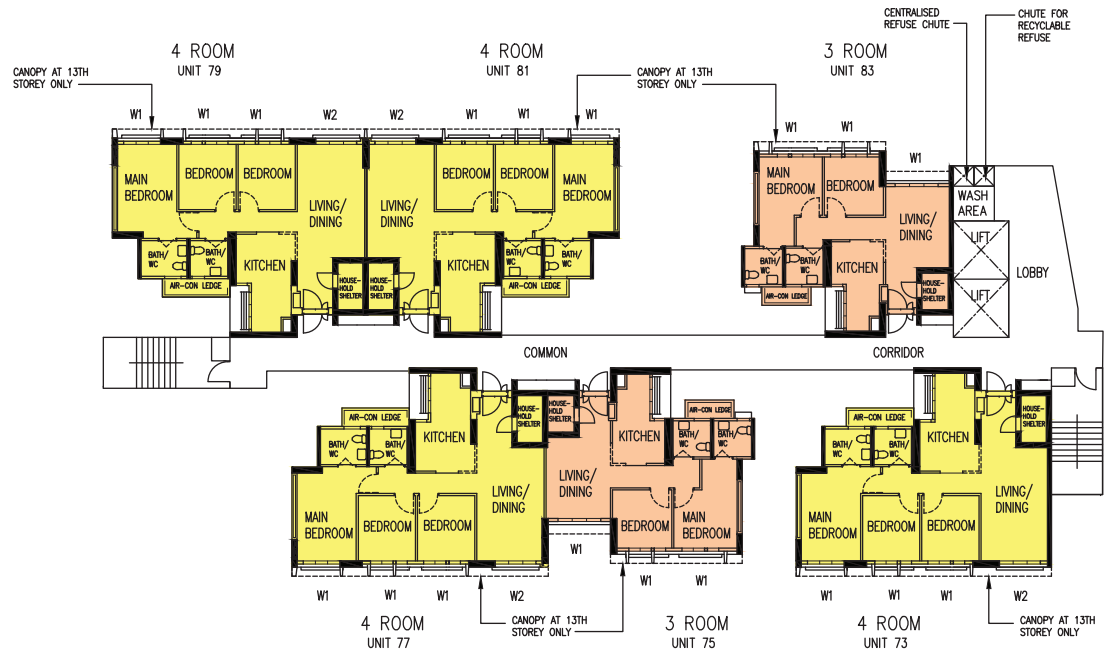
LEGEND:

- 3 ROOM
- 4 ROOM

W1 - Three Quarter Height Window (Approx. 550mm high parapet wall)  
 W2 - Full Height Window (Approx. 300mm high parapet wall)  
 Unless otherwise indicated all windows will be standard height windows.



The coloured floor plan is not intended to demarcate the boundary of the flat.



BLOCK 206C  
(12TH TO 13TH STOREY FLOOR PLAN)

UNITS AT AND ABOVE 5TH STOREY ARE HIGHER THAN THE MAIN ROOF GARDEN LEVEL OF BLOCK 206

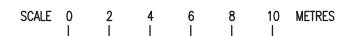
LEGEND:

- 3 ROOM
- 4 ROOM

W1 - Three Quarter Height Window (Approx. 550mm high parapet wall)

W2 - Full Height Window (Approx. 300mm high parapet wall)

Unless otherwise indicated all windows will be standard height windows.



The coloured floor plan is not intended to demarcate the boundary of the flat.



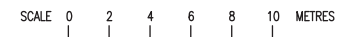
BLOCK 206C  
(14TH STOREY FLOOR PLAN)

UNITS AT AND ABOVE 5TH STOREY ARE HIGHER THAN THE MAIN ROOF GARDEN LEVEL OF BLOCK 206

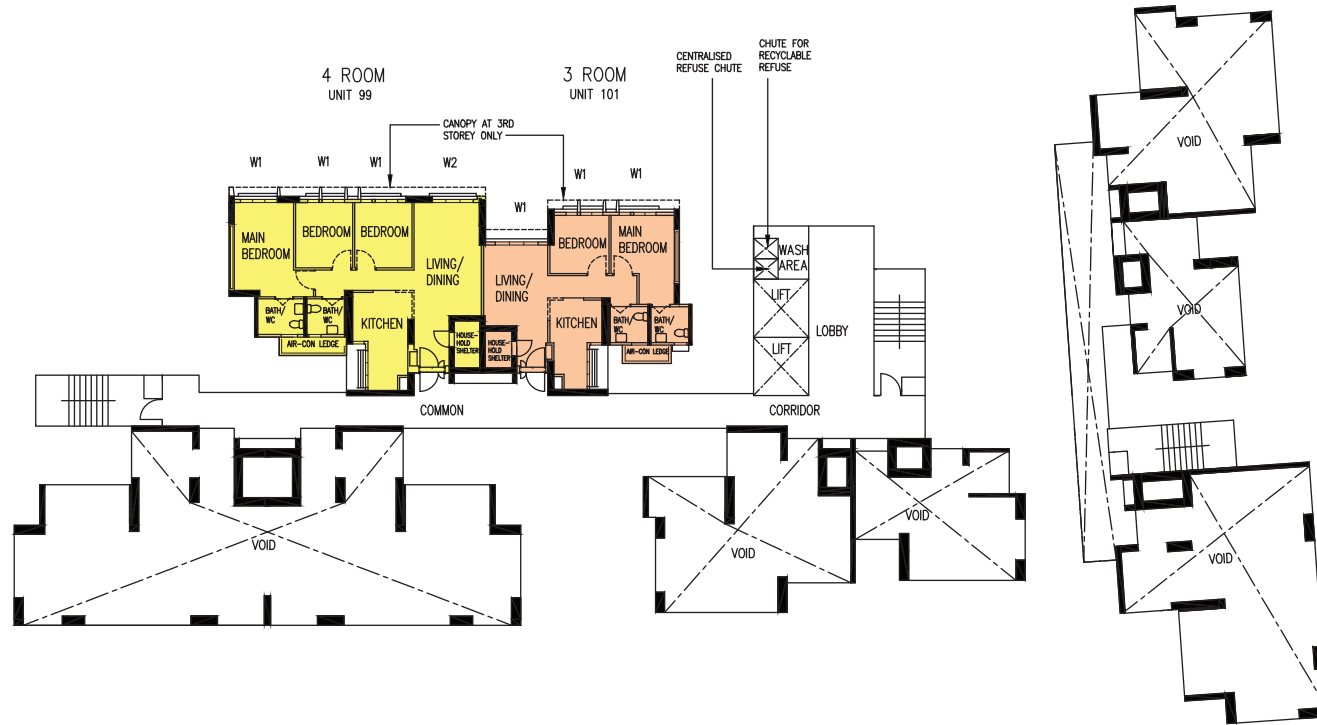
LEGEND:

- 3 ROOM
- 4 ROOM

W1 - Three Quarter Height Window (Approx. 550mm high parapet wall)  
 W2 - Full Height Window (Approx. 300mm high parapet wall)  
 Unless otherwise indicated all windows will be standard height windows.



The coloured floor plan is not intended to demarcate the boundary of the flat.



BLOCK 206D  
(3RD STOREY FLOOR PLAN)

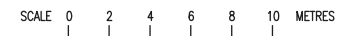
UNITS AT AND ABOVE 5TH STOREY ARE HIGHER THAN THE MAIN ROOF GARDEN LEVEL OF BLOCK 206

LEGEND:

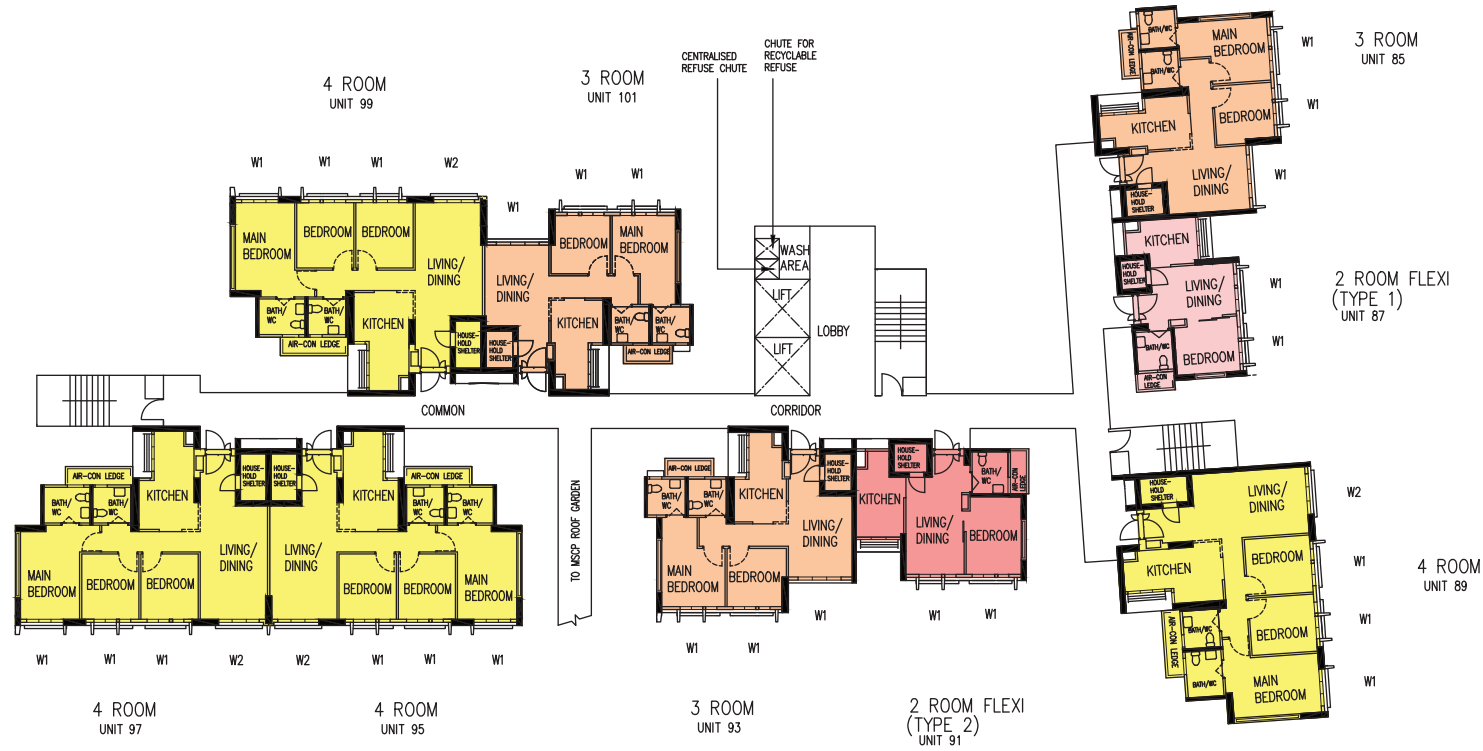
- 3 ROOM
- 4 ROOM

W1 - Three Quarter Height Window (Approx. 550mm high parapet wall)  
 W2 - Full Height Window (Approx. 300mm high parapet wall)  
 Unless otherwise indicated all windows will be standard height windows.

The coloured floor plan is not intended to demarcate the boundary of the flat.







BLOCK 206D  
(4TH STOREY FLOOR PLAN)

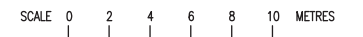
LEGEND:

- 2 ROOM FLEXI (TYPE 1)
- 2 ROOM FLEXI (TYPE 2)
- 3 ROOM
- 4 ROOM

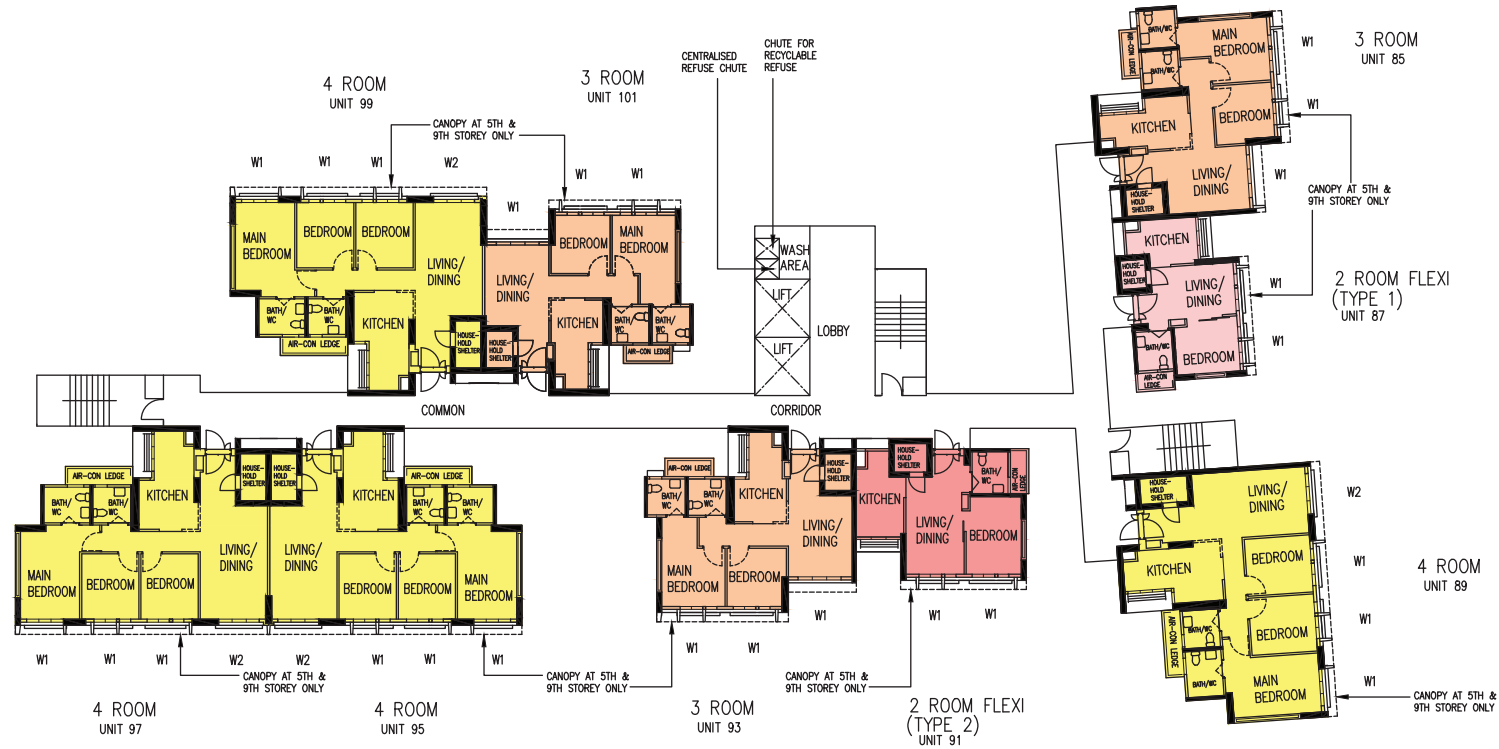
UNITS AT AND ABOVE 5TH STOREY ARE HIGHER THAN THE MAIN ROOF GARDEN LEVEL OF BLOCK 206

FOR 2–ROOM FLEXI (TYPE 1) FLATS, THE NUMBER OF PANELS FOR THE SLIDING PARTITION BETWEEN THE BEDROOM AND LIVING ROOM WILL DIFFER DEPENDING ON THE SELECTION OF THE OPTIONAL COMPONENT SCHEME (OCS), WHERE APPLICABLE

W1 - Three Quarter Height Window (Approx. 550mm high parapet wall)  
 W2 - Full Height Window (Approx. 300mm high parapet wall)  
 Unless otherwise indicated all windows will be standard height windows.



The coloured floor plan is not intended to demarcate the boundary of the flat.



BLOCK 206D  
(5TH, 8TH TO 9TH STOREY FLOOR PLAN)

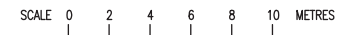
LEGEND:

- 2 ROOM FLEXI (TYPE 1)
- 2 ROOM FLEXI (TYPE 2)
- 3 ROOM
- 4 ROOM

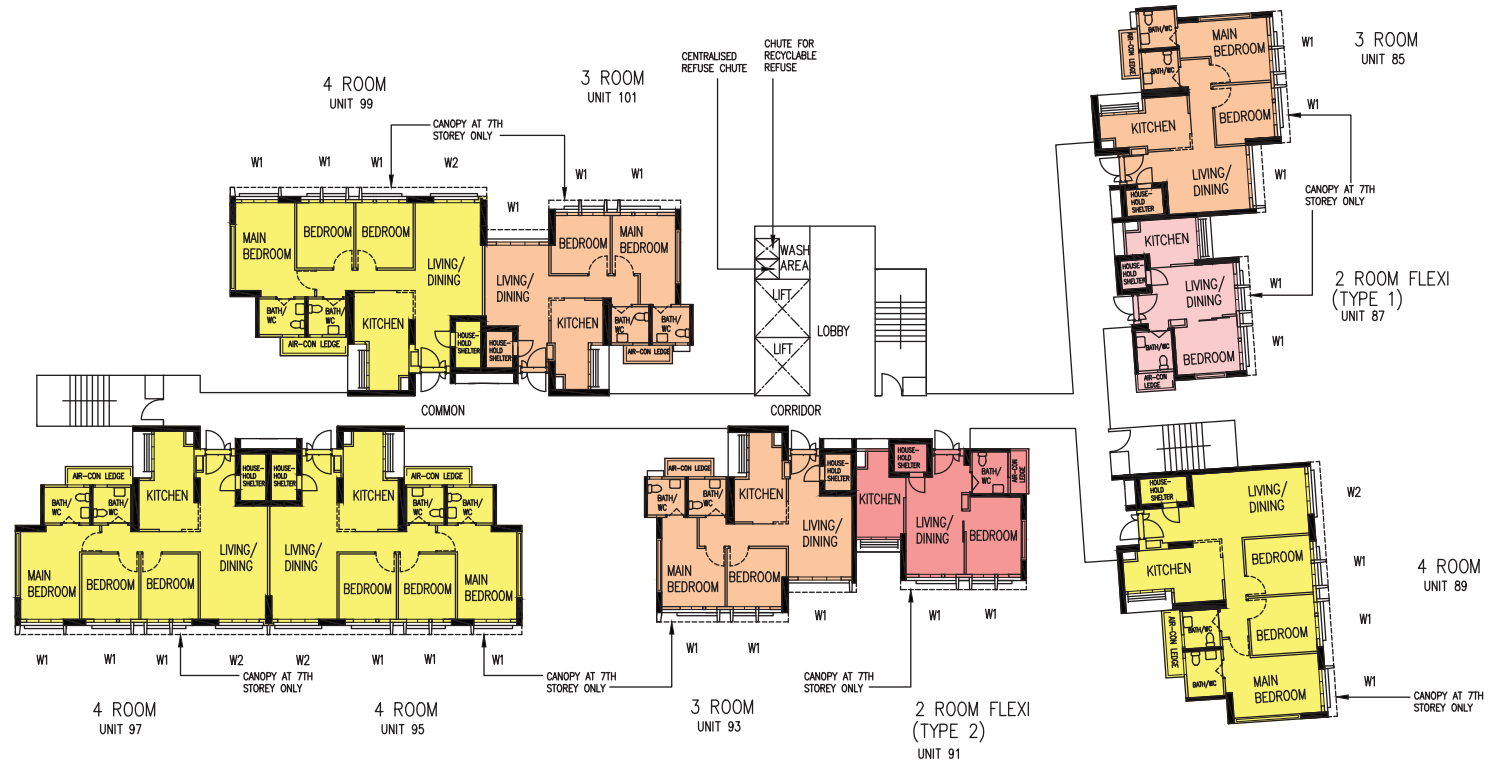
UNITS AT AND ABOVE 5TH STOREY ARE HIGHER THAN THE MAIN ROOF GARDEN LEVEL OF BLOCK 206

FOR 2-ROOM FLEXI (TYPE 1) FLATS, THE NUMBER OF PANELS FOR THE SLIDING PARTITION BETWEEN THE BEDROOM AND LIVING ROOM WILL DIFFER DEPENDING ON THE SELECTION OF THE OPTIONAL COMPONENT SCHEME (OCS), WHERE APPLICABLE

W1 - Three Quarter Height Window (Approx. 550mm high parapet wall)  
 W2 - Full Height Window (Approx. 300mm high parapet wall)  
 Unless otherwise indicated all windows will be standard height windows.



The coloured floor plan is not intended to demarcate the boundary of the flat.



BLOCK 206D  
(6TH TO 7TH STOREY FLOOR PLAN)

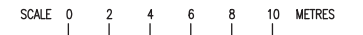
LEGEND:

- 2 ROOM FLEXI (TYPE 1)
- 2 ROOM FLEXI (TYPE 2)
- 3 ROOM
- 4 ROOM

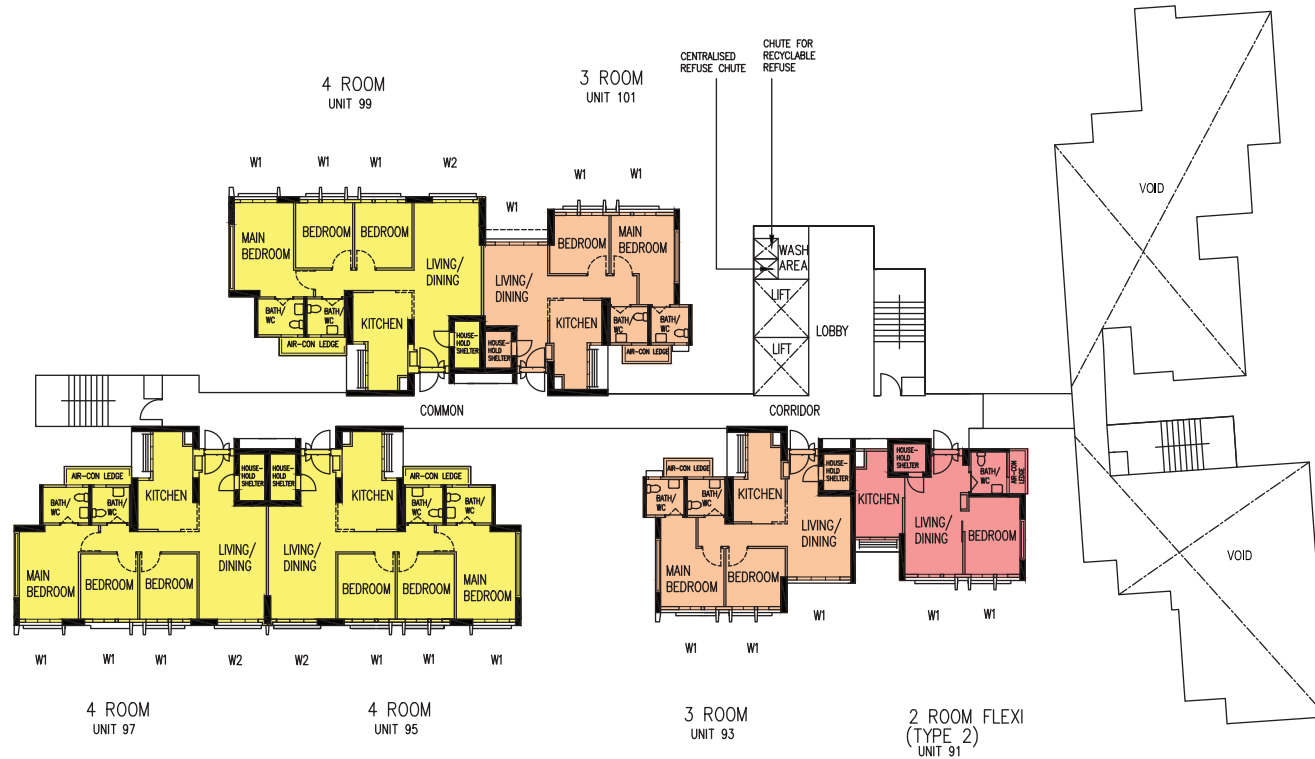
UNITS AT AND ABOVE 5TH STOREY ARE HIGHER THAN THE MAIN ROOF GARDEN LEVEL OF BLOCK 206

FOR 2-ROOM FLEXI (TYPE 1) FLATS, THE NUMBER OF PANELS FOR THE SLIDING PARTITION BETWEEN THE BEDROOM AND LIVING ROOM WILL DIFFER DEPENDING ON THE SELECTION OF THE OPTIONAL COMPONENT SCHEME (OCS), WHERE APPLICABLE

W1 - Three Quarter Height Window (Approx. 550mm high parapet wall)  
 W2 - Full Height Window (Approx. 300mm high parapet wall)  
 Unless otherwise indicated all windows will be standard height windows.



The coloured floor plan is not intended to demarcate the boundary of the flat.



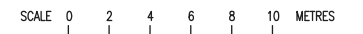
BLOCK 206D  
(10TH STOREY FLOOR PLAN)

LEGEND:

UNITS AT AND ABOVE 5TH STOREY ARE HIGHER THAN THE MAIN ROOF GARDEN LEVEL OF BLOCK 206

- 2 ROOM FLEXI (TYPE 2)
- 3 ROOM
- 4 ROOM

W1 - Three Quarter Height Window (Approx. 550mm high parapet wall)  
 W2 - Full Height Window (Approx. 300mm high parapet wall)  
 Unless otherwise indicated all windows will be standard height windows.



The coloured floor plan is not intended to demarcate the boundary of the flat.



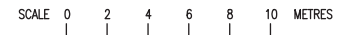
BLOCK 206D  
(11TH STOREY FLOOR PLAN)

LEGEND:

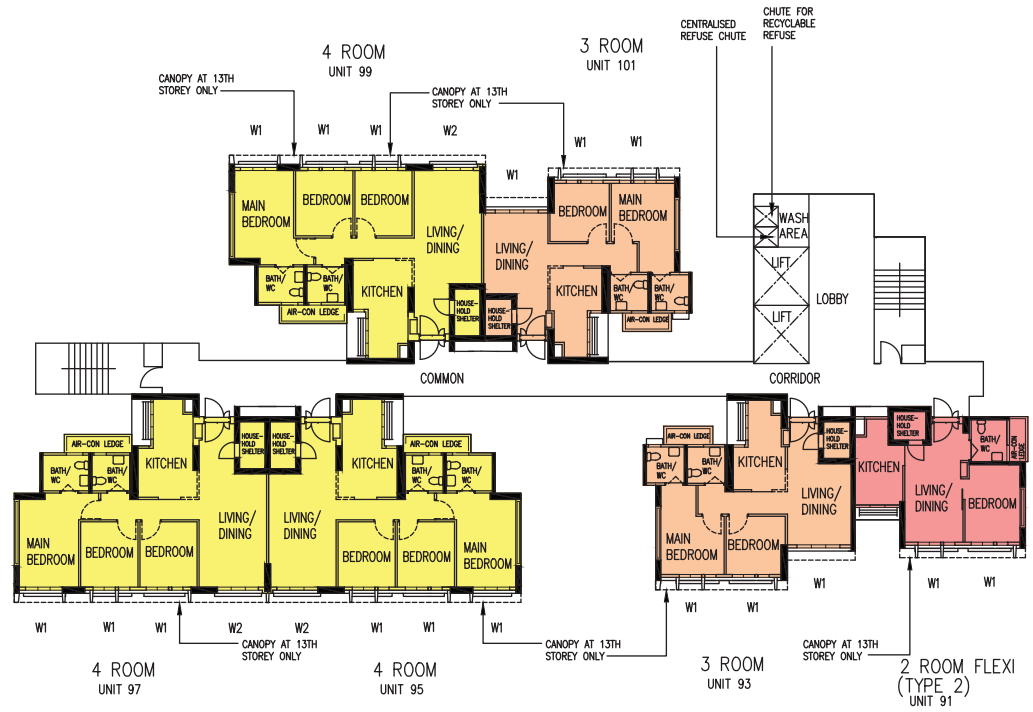
UNITS AT AND ABOVE 5TH STOREY ARE HIGHER THAN THE MAIN ROOF GARDEN LEVEL OF BLOCK 206

- 2 ROOM FLEXI (TYPE 2)
- 3 ROOM
- 4 ROOM

W1 - Three Quarter Height Window (Approx. 550mm high parapet wall)  
 W2 - Full Height Window (Approx. 300mm high parapet wall)  
 Unless otherwise indicated all windows will be standard height windows.



The coloured floor plan is not intended to demarcate the boundary of the flat.



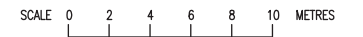
BLOCK 206D  
(12TH TO 13TH STOREY FLOOR PLAN)

LEGEND:

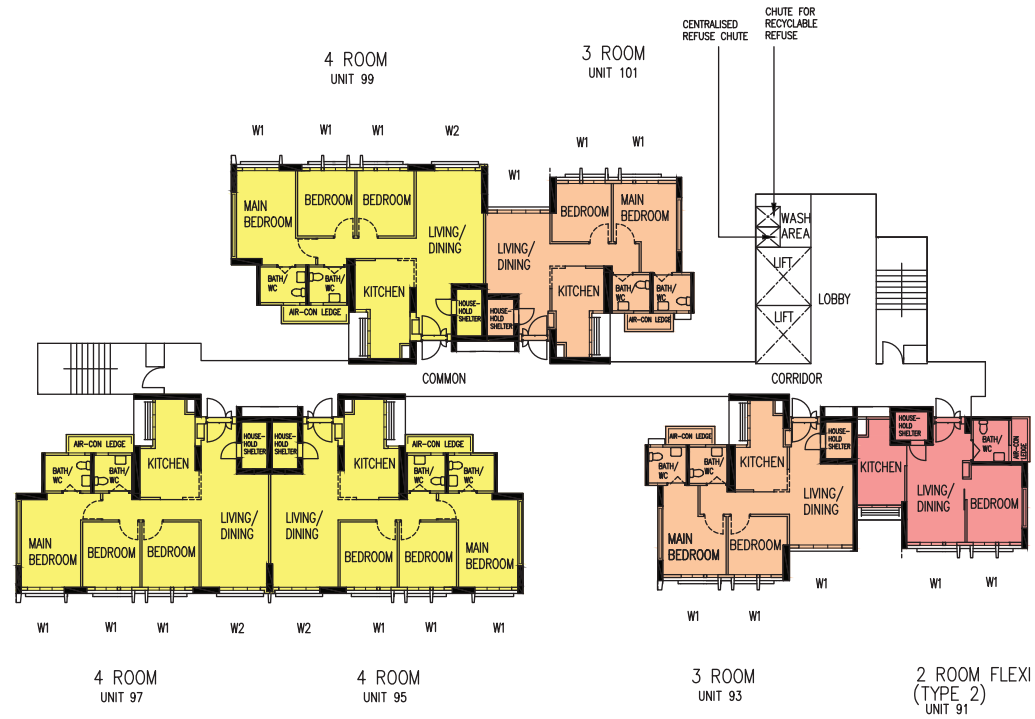
UNITS AT AND ABOVE 5TH STOREY ARE HIGHER THAN THE MAIN ROOF GARDEN LEVEL OF BLOCK 206

- 2 ROOM FLEXI (TYPE 2)
- 3 ROOM
- 4 ROOM

W1 - Three Quarter Height Window (Approx. 550mm high parapet wall)  
 W2 - Full Height Window (Approx. 300mm high parapet wall)  
 Unless otherwise indicated all windows will be standard height windows.



The coloured floor plan is not intended to demarcate the boundary of the flat.



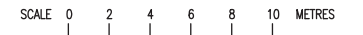
BLOCK 206D  
(14TH STOREY FLOOR PLAN)

LEGEND:

UNITS AT AND ABOVE 5TH STOREY ARE HIGHER THAN THE MAIN ROOF GARDEN LEVEL OF BLOCK 206

- 2 ROOM FLEXI (TYPE 2)
- 3 ROOM
- 4 ROOM

W1 - Three Quarter Height Window (Approx. 550mm high parapet wall)  
 W2 - Full Height Window (Approx. 300mm high parapet wall)  
 Unless otherwise indicated all windows will be standard height windows.



The coloured floor plan is not intended to demarcate the boundary of the flat.



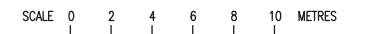
BLOCK 207A  
(4TH STOREY FLOOR PLAN)

UNITS AT AND ABOVE 4TH STOREY ARE HIGHER THAN THE MAIN ROOF GARDEN LEVEL OF BLOCK 207

LEGEND:

- 2 ROOM FLEXI (TYPE 2)
- 3 ROOM
- 4 ROOM

W1 - Three Quarter Height Window (Approx. 550mm high parapet wall)  
 W2 - Full Height Window (Approx. 300mm high parapet wall)  
 Unless otherwise indicated all windows will be standard height windows.



The coloured floor plan is not intended to demarcate the boundary of the flat.





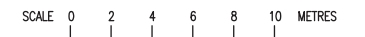
BLOCK 207A  
(5TH STOREY FLOOR PLAN)

UNITS AT AND ABOVE 4TH STOREY ARE HIGHER THAN THE MAIN ROOF GARDEN LEVEL OF BLOCK 207

LEGEND:

- 2 ROOM FLEXI (TYPE 2)
- 3 ROOM
- 4 ROOM

W1 - Three Quarter Height Window (Approx. 550mm high parapet wall)  
 W2 - Full Height Window (Approx. 300mm high parapet wall)  
 Unless otherwise indicated all windows will be standard height windows.



The coloured floor plan is not intended to demarcate the boundary of the flat.



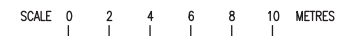
BLOCK 207A  
(6TH STOREY FLOOR PLAN)

UNITS AT AND ABOVE 4TH STOREY ARE HIGHER THAN THE MAIN ROOF GARDEN LEVEL OF BLOCK 207

LEGEND:

- 2 ROOM FLEXI (TYPE 2)
- 3 ROOM
- 4 ROOM

W1 - Three Quarter Height Window (Approx. 550mm high parapet wall)  
 W2 - Full Height Window (Approx. 300mm high parapet wall)  
 Unless otherwise indicated all windows will be standard height windows.



The coloured floor plan is not intended to demarcate the boundary of the flat.



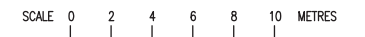
BLOCK 207A  
(7TH STOREY FLOOR PLAN)

UNITS AT AND ABOVE 4TH STOREY ARE HIGHER THAN THE MAIN ROOF GARDEN LEVEL OF BLOCK 207

LEGEND:

- 2 ROOM FLEXI (TYPE 2)
- 3 ROOM
- 4 ROOM

W1 - Three Quarter Height Window (Approx. 550mm high parapet wall)  
 W2 - Full Height Window (Approx. 300mm high parapet wall)  
 Unless otherwise indicated all windows will be standard height windows.



The coloured floor plan is not intended to demarcate the boundary of the flat.



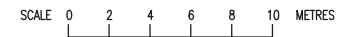
BLOCK 207A  
(8TH TO 9TH, 12TH TO 13TH STOREY FLOOR PLAN)

UNITS AT AND ABOVE 4TH STOREY ARE HIGHER THAN THE MAIN ROOF GARDEN LEVEL OF BLOCK 207

LEGEND:

- 2 ROOM FLEXI (TYPE 2)
- 3 ROOM
- 4 ROOM

W1 - Three Quarter Height Window (Approx. 550mm high parapet wall)  
 W2 - Full Height Window (Approx. 300mm high parapet wall)  
 Unless otherwise indicated all windows will be standard height windows.



The coloured floor plan is not intended to demarcate the boundary of the flat.



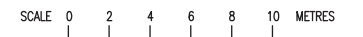
BLOCK 207A  
(10TH TO 11TH, 14TH STOREY FLOOR PLAN)

UNITS AT AND ABOVE 4TH STOREY ARE HIGHER THAN THE MAIN ROOF GARDEN LEVEL OF BLOCK 207

LEGEND:

- 2 ROOM FLEXI (TYPE 2)
- 3 ROOM
- 4 ROOM

W1 - Three Quarter Height Window (Approx. 550mm high parapet wall)  
 W2 - Full Height Window (Approx. 300mm high parapet wall)  
 Unless otherwise indicated all windows will be standard height windows.



The coloured floor plan is not intended to demarcate the boundary of the flat.



BLOCK 207B  
(4TH STOREY FLOOR PLAN)

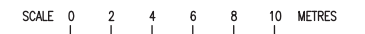
UNITS AT AND ABOVE 4TH STOREY ARE HIGHER THAN THE MAIN ROOF GARDEN LEVEL OF BLOCK 207

LEGEND:

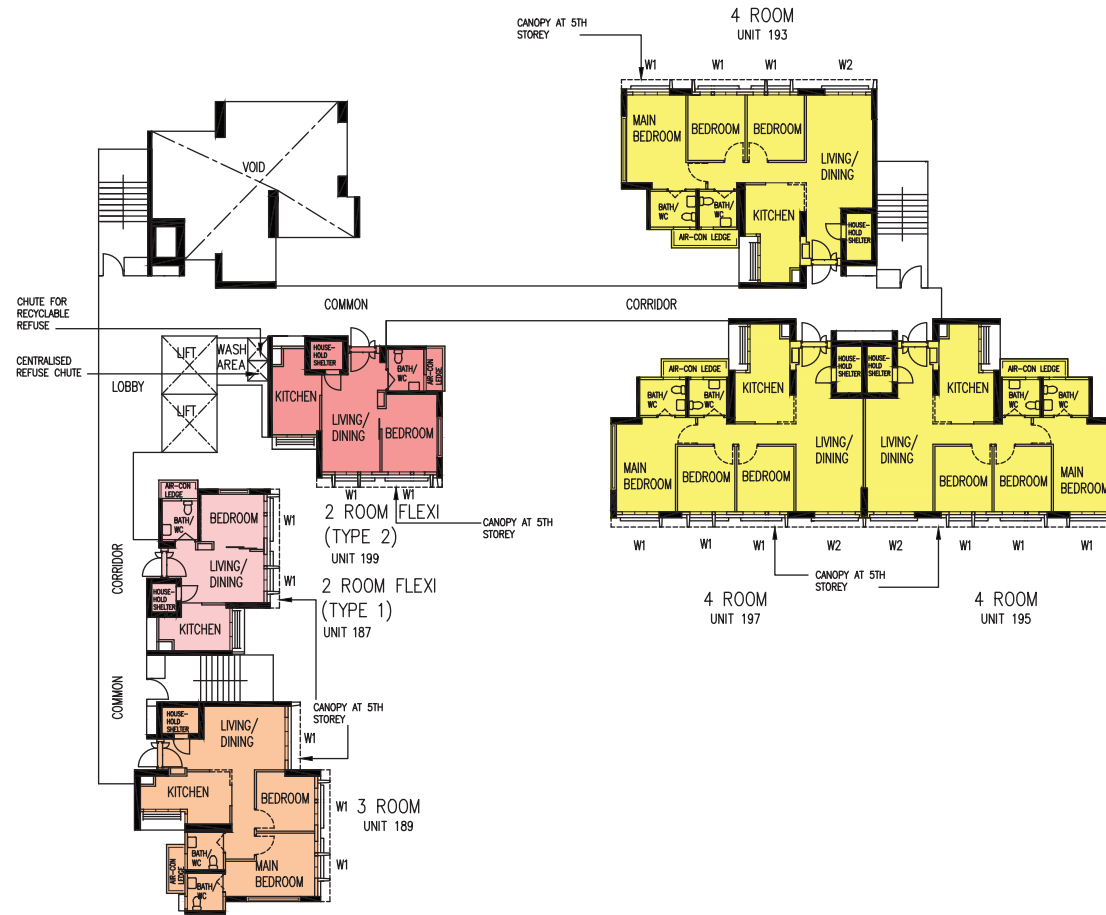
- 2 ROOM FLEXI (TYPE 1)
- 2 ROOM FLEXI (TYPE 2)
- 3 ROOM
- 4 ROOM

FOR 2-ROOM FLEXI (TYPE 1) FLATS, THE NUMBER OF PANELS FOR THE SLIDING PARTITION BETWEEN THE BEDROOM AND LIVING ROOM WILL DIFFER DEPENDING ON THE SELECTION OF THE OPTIONAL COMPONENT SCHEME (OCS), WHERE APPLICABLE

W1 - Three Quarter Height Window (Approx. 550mm high parapet wall)  
 W2 - Full Height Window (Approx. 300mm high parapet wall)  
 Unless otherwise indicated all windows will be standard height windows.



The coloured floor plan is not intended to demarcate the boundary of the flat.



BLOCK 207B  
(5TH STOREY FLOOR PLAN)

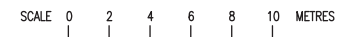
LEGEND:

- 2 ROOM FLEXI (TYPE 1)
- 2 ROOM FLEXI (TYPE 2)
- 3 ROOM
- 4 ROOM

W1 - Three Quarter Height Window (Approx. 550mm high parapet wall)  
 W2 - Full Height Window (Approx. 300mm high parapet wall)  
 Unless otherwise indicated all windows will be standard height windows.

UNITS AT AND ABOVE 4TH STOREY ARE HIGHER THAN THE MAIN ROOF GARDEN LEVEL OF BLOCK 207  
 FOR 2-ROOM FLEXI (TYPE 1) FLATS, THE NUMBER OF PANELS FOR THE SLIDING PARTITION BETWEEN THE BEDROOM AND LIVING ROOM WILL DIFFER DEPENDING ON THE SELECTION OF THE OPTIONAL COMPONENT SCHEME (OCS), WHERE APPLICABLE

The coloured floor plan is not intended to demarcate the boundary of the flat.





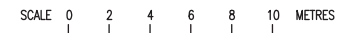
BLOCK 207B  
(6TH STOREY FLOOR PLAN)

LEGEND:

- 2 ROOM FLEXI (TYPE 1)
- 2 ROOM FLEXI (TYPE 2)
- 3 ROOM
- 4 ROOM

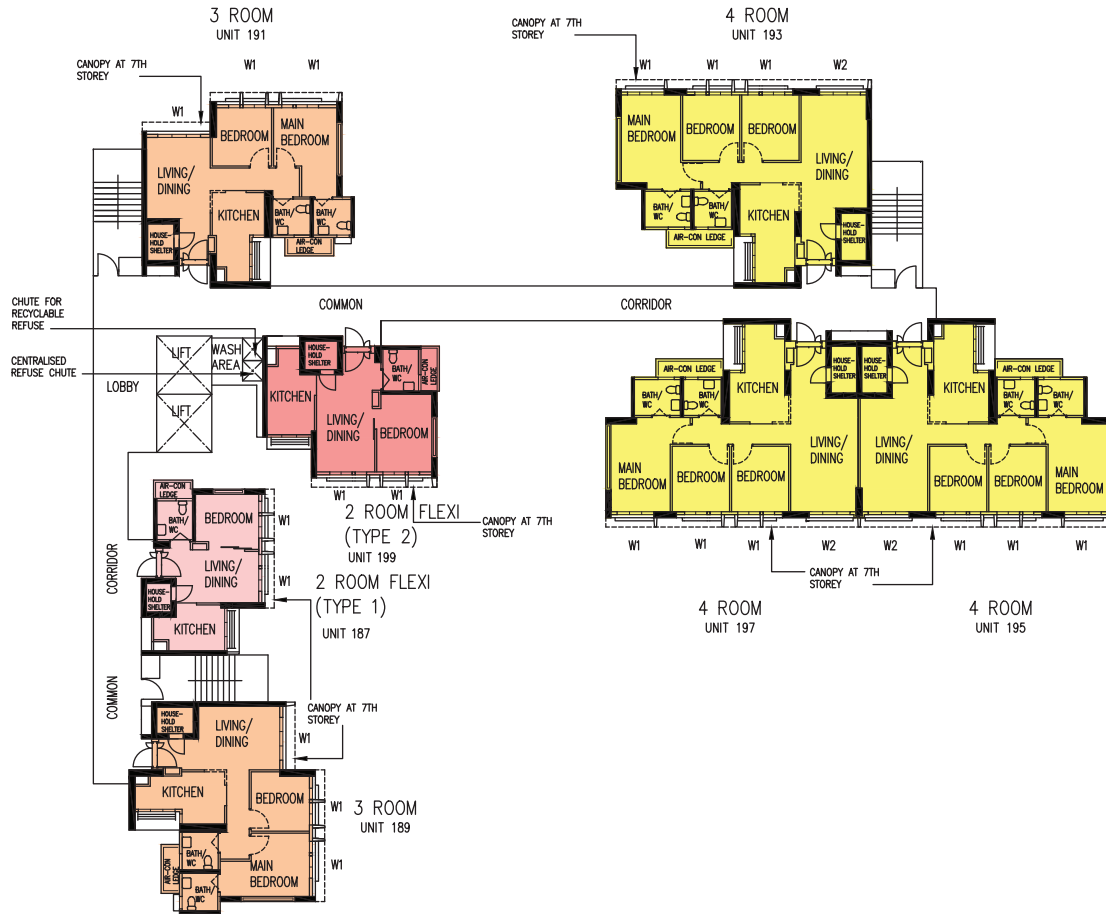
UNITS AT AND ABOVE 4TH STOREY ARE HIGHER THAN THE MAIN ROOF GARDEN LEVEL OF BLOCK 207  
FOR 2-ROOM FLEXI (TYPE 1) FLATS, THE NUMBER OF PANELS FOR THE SLIDING PARTITION BETWEEN THE BEDROOM AND LIVING ROOM WILL DIFFER DEPENDING ON THE SELECTION OF THE OPTIONAL COMPONENT SCHEME (OCS), WHERE APPLICABLE

W1 - Three Quarter Height Window (Approx. 550mm high parapet wall)  
W2 - Full Height Window (Approx. 300mm high parapet wall)  
Unless otherwise indicated all windows will be standard height windows.



The coloured floor plan is not intended to demarcate the boundary of the flat.





BLOCK 207B  
(7TH STOREY FLOOR PLAN)

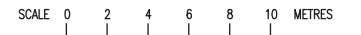
LEGEND:

- 2 ROOM FLEXI (TYPE 1)
- 2 ROOM FLEXI (TYPE 2)
- 3 ROOM
- 4 ROOM

UNITS AT AND ABOVE 4TH STOREY ARE HIGHER THAN THE MAIN ROOF GARDEN LEVEL OF BLOCK 207

FOR 2-ROOM FLEXI (TYPE 1) FLATS, THE NUMBER OF PANELS FOR THE SLIDING PARTITION BETWEEN THE BEDROOM AND LIVING ROOM WILL DIFFER DEPENDING ON THE SELECTION OF THE OPTIONAL COMPONENT SCHEME (OCS), WHERE APPLICABLE

W1 - Three Quarter Height Window (Approx. 550mm high parapet wall)  
 W2 - Full Height Window (Approx. 300mm high parapet wall)  
 Unless otherwise indicated all windows will be standard height windows.



The coloured floor plan is not intended to demarcate the boundary of the flat.



BLOCK 207B  
(8TH STOREY FLOOR PLAN)

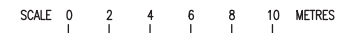
LEGEND:

- 2 ROOM FLEXI (TYPE 1)
- 2 ROOM FLEXI (TYPE 2)
- 3 ROOM
- 4 ROOM

UNITS AT AND ABOVE 4TH STOREY ARE HIGHER THAN THE MAIN ROOF GARDEN LEVEL OF BLOCK 207

FOR 2-ROOM FLEXI (TYPE 1) FLATS, THE NUMBER OF PANELS FOR THE SLIDING PARTITION BETWEEN THE BEDROOM AND LIVING ROOM WILL DIFFER DEPENDING ON THE SELECTION OF THE OPTIONAL COMPONENT SCHEME (OCS), WHERE APPLICABLE

W1 - Three Quarter Height Window (Approx. 550mm high parapet wall)  
 W2 - Full Height Window (Approx. 300mm high parapet wall)  
 Unless otherwise indicated all windows will be standard height windows.



The coloured floor plan is not intended to demarcate the boundary of the flat.



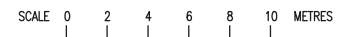
BLOCK 207B  
(9TH STOREY FLOOR PLAN)

LEGEND:

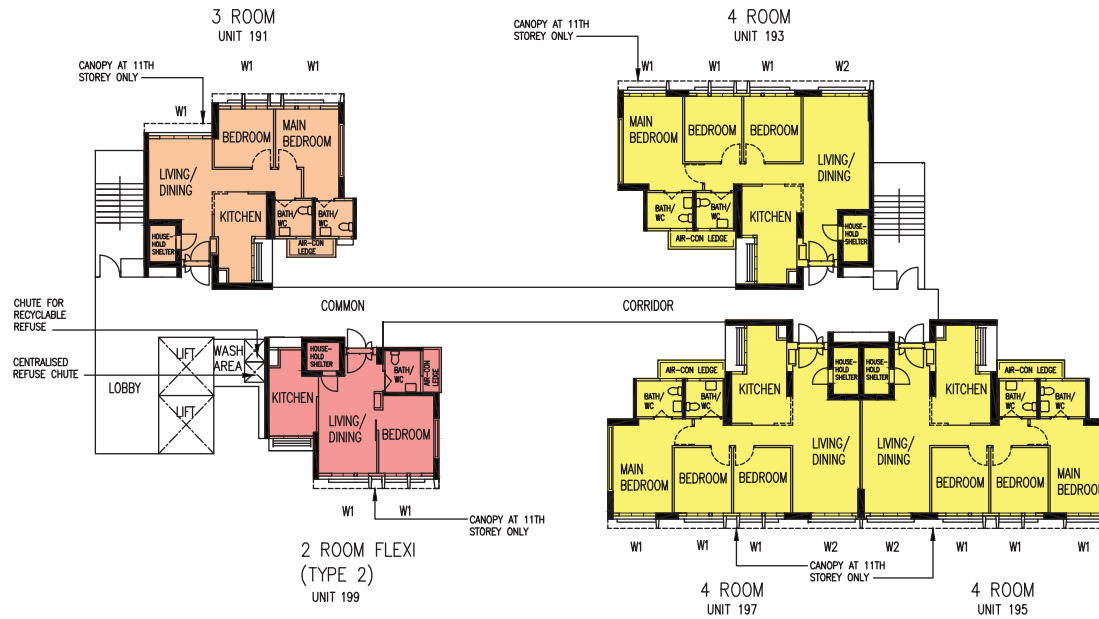
UNITS AT AND ABOVE 4TH STOREY ARE HIGHER THAN THE MAIN ROOF GARDEN LEVEL OF BLOCK 207

- 2 ROOM FLEXI (TYPE 2)
- 3 ROOM
- 4 ROOM

W1 - Three Quarter Height Window (Approx. 550mm high parapet wall)  
 W2 - Full Height Window (Approx. 300mm high parapet wall)  
 Unless otherwise indicated all windows will be standard height windows.



The coloured floor plan is not intended to demarcate the boundary of the flat.



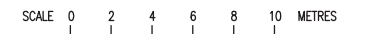
BLOCK 207B  
(10TH TO 11TH, 14TH STOREY FLOOR PLAN)

UNITS AT AND ABOVE 4TH STOREY ARE HIGHER THAN THE MAIN ROOF GARDEN LEVEL OF BLOCK 207

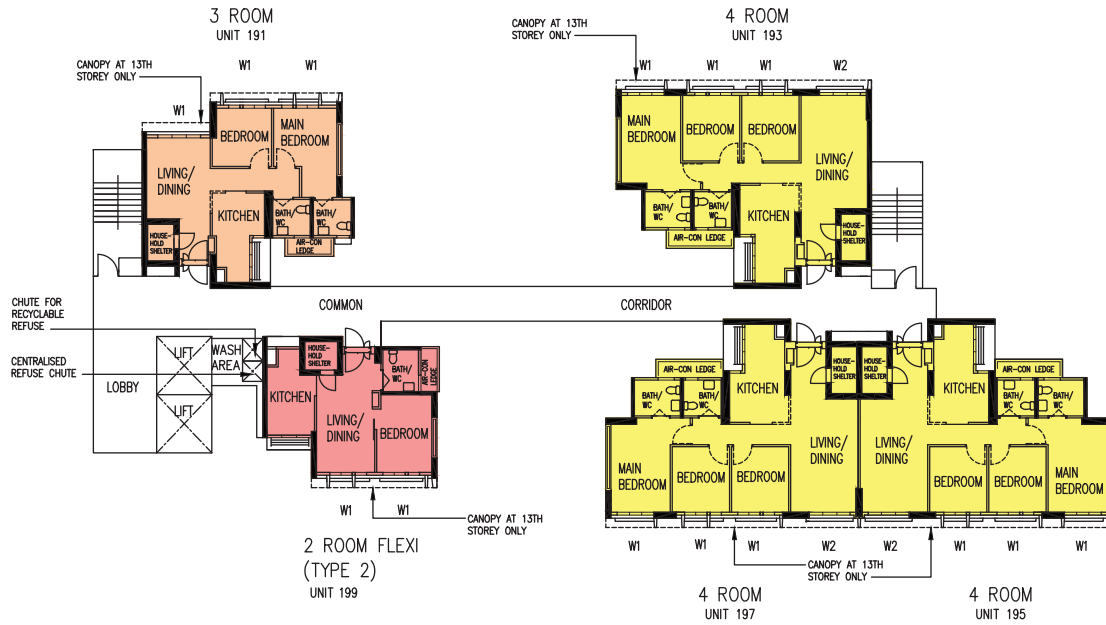
LEGEND:

- 2 ROOM FLEXI (TYPE 2)
- 3 ROOM
- 4 ROOM

W1 - Three Quarter Height Window (Approx. 550mm high parapet wall)  
 W2 - Full Height Window (Approx. 300mm high parapet wall)  
 Unless otherwise indicated all windows will be standard height windows.



The coloured floor plan is not intended to demarcate the boundary of the flat.



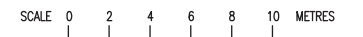
BLOCK 207B  
(12TH TO 13TH STOREY FLOOR PLAN)

UNITS AT AND ABOVE 4TH STOREY ARE HIGHER THAN THE MAIN ROOF GARDEN LEVEL OF BLOCK 207

LEGEND:

- 2 ROOM FLEXI (TYPE 2)
- 3 ROOM
- 4 ROOM

W1 - Three Quarter Height Window (Approx. 550mm high parapet wall)  
 W2 - Full Height Window (Approx. 300mm high parapet wall)  
 Unless otherwise indicated all windows will be standard height windows.



The coloured floor plan is not intended to demarcate the boundary of the flat.



BLOCK 207C  
(4TH STOREY FLOOR PLAN)

UNITS AT AND ABOVE 4TH STOREY ARE HIGHER THAN THE MAIN ROOF GARDEN LEVEL OF BLOCK 207

FOR 2-ROOM FLEXI (TYPE 1) FLATS, THE NUMBER OF PANELS FOR THE SLIDING PARTITION BETWEEN THE BEDROOM AND LIVING ROOM WILL DIFFER DEPENDING ON THE SELECTION OF THE OPTIONAL COMPONENT SCHEME (OCS), WHERE APPLICABLE

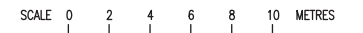
LEGEND:

- 2 ROOM FLEXI (TYPE 1)
- 2 ROOM FLEXI (TYPE 2)
- 3 ROOM
- 4 ROOM

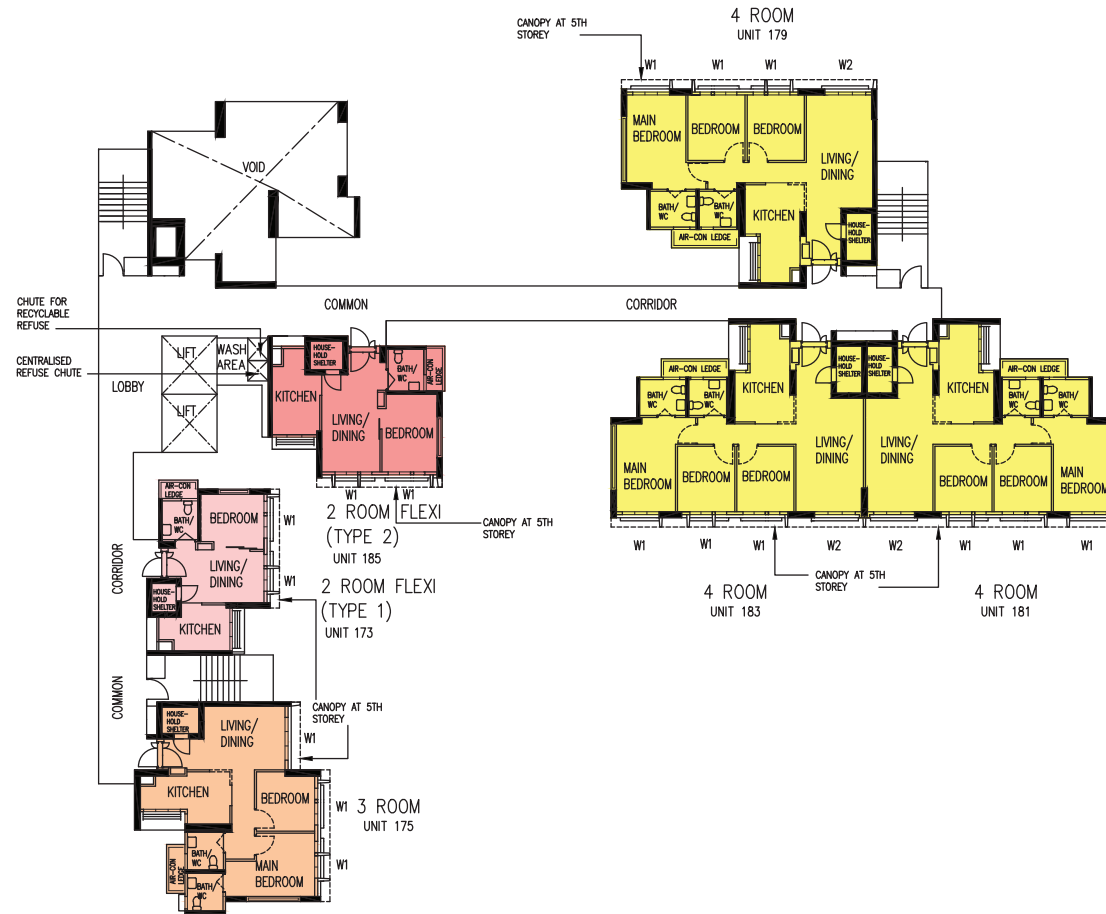
W1 - Three Quarter Height Window (Approx. 550mm high parapet wall)

W2 - Full Height Window (Approx. 300mm high parapet wall)

Unless otherwise indicated all windows will be standard height windows.



The coloured floor plan is not intended to demarcate the boundary of the flat.



BLOCK 207C  
(5TH STOREY FLOOR PLAN)

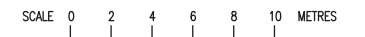
LEGEND:

- 2 ROOM FLEXI (TYPE 1)
- 2 ROOM FLEXI (TYPE 2)
- 3 ROOM
- 4 ROOM

UNITS AT AND ABOVE 4TH STOREY ARE HIGHER THAN THE MAIN ROOF GARDEN LEVEL OF BLOCK 207

FOR 2-ROOM FLEXI (TYPE 1) FLATS, THE NUMBER OF PANELS FOR THE SLIDING PARTITION BETWEEN THE BEDROOM AND LIVING ROOM WILL DIFFER DEPENDING ON THE SELECTION OF THE OPTIONAL COMPONENT SCHEME (OCS), WHERE APPLICABLE

W1 - Three Quarter Height Window (Approx. 550mm high parapet wall)  
 W2 - Full Height Window (Approx. 300mm high parapet wall)  
 Unless otherwise indicated all windows will be standard height windows.



The coloured floor plan is not intended to demarcate the boundary of the flat.



**BLOCK 207C  
(6TH STOREY FLOOR PLAN)**

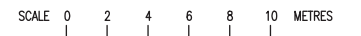
**LEGEND:**

- 2 ROOM FLEXI (TYPE 1)
- 2 ROOM FLEXI (TYPE 2)
- 3 ROOM
- 4 ROOM

UNITS AT AND ABOVE 4TH STOREY ARE HIGHER THAN THE MAIN ROOF GARDEN LEVEL OF BLOCK 207

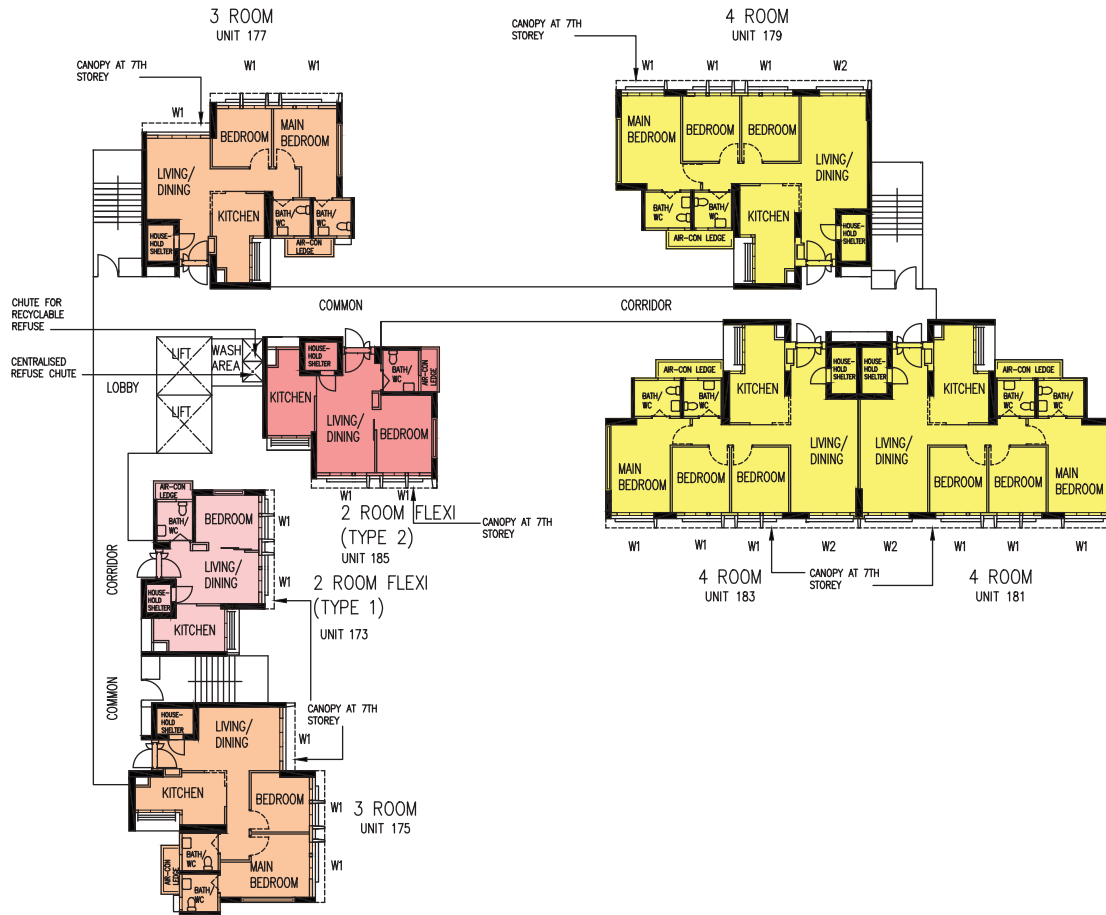
FOR 2-ROOM FLEXI (TYPE 1) FLATS, THE NUMBER OF PANELS FOR THE SLIDING PARTITION BETWEEN THE BEDROOM AND LIVING ROOM WILL DIFFER DEPENDING ON THE SELECTION OF THE OPTIONAL COMPONENT SCHEME (OCS), WHERE APPLICABLE

W1 - Three Quarter Height Window (Approx. 550mm high parapet wall)  
 W2 - Full Height Window (Approx. 300mm high parapet wall)  
 Unless otherwise indicated all windows will be standard height windows.



The coloured floor plan is not intended to demarcate the boundary of the flat.





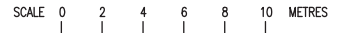
BLOCK 207C  
(7TH STOREY FLOOR PLAN)

LEGEND:

- 2 ROOM FLEXI (TYPE 1)
- 2 ROOM FLEXI (TYPE 2)
- 3 ROOM
- 4 ROOM

UNITS AT AND ABOVE 4TH STOREY ARE HIGHER THAN THE MAIN ROOF GARDEN LEVEL OF BLOCK 207  
 FOR 2-ROOM FLEXI (TYPE 1) FLATS, THE NUMBER OF PANELS FOR THE SLIDING PARTITION BETWEEN THE BEDROOM AND LIVING ROOM WILL DIFFER DEPENDING ON THE SELECTION OF THE OPTIONAL COMPONENT SCHEME (OCS), WHERE APPLICABLE

W1 - Three Quarter Height Window (Approx. 550mm high parapet wall)  
 W2 - Full Height Window (Approx. 300mm high parapet wall)  
 Unless otherwise indicated all windows will be standard height windows.



The coloured floor plan is not intended to demarcate the boundary of the flat.



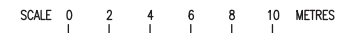
BLOCK 207C  
(8TH STOREY FLOOR PLAN)

LEGEND:

- 2 ROOM FLEXI (TYPE 1)
- 2 ROOM FLEXI (TYPE 2)
- 3 ROOM
- 4 ROOM

UNITS AT AND ABOVE 4TH STOREY ARE HIGHER THAN THE MAIN ROOF GARDEN LEVEL OF BLOCK 207  
FOR 2-ROOM FLEXI (TYPE 1) FLATS, THE NUMBER OF PANELS FOR THE SLIDING PARTITION BETWEEN THE BEDROOM AND LIVING ROOM WILL DIFFER DEPENDING ON THE SELECTION OF THE OPTIONAL COMPONENT SCHEME (OCS), WHERE APPLICABLE

W1 - Three Quarter Height Window (Approx. 550mm high parapet wall)  
W2 - Full Height Window (Approx. 300mm high parapet wall)  
Unless otherwise indicated all windows will be standard height windows.



The coloured floor plan is not intended to demarcate the boundary of the flat.



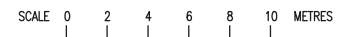
BLOCK 207C  
(9TH STOREY FLOOR PLAN)

LEGEND:

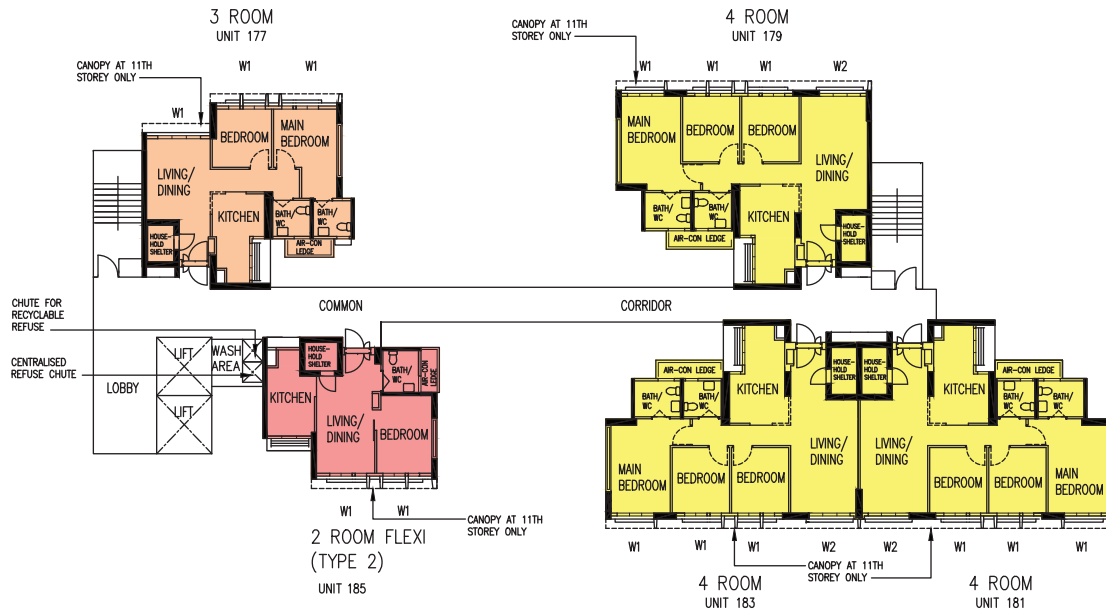
UNITS AT AND ABOVE 4TH STOREY ARE HIGHER THAN THE MAIN ROOF GARDEN LEVEL OF BLOCK 207

- 2 ROOM FLEXI (TYPE 2)
- 3 ROOM
- 4 ROOM

W1 - Three Quarter Height Window (Approx. 550mm high parapet wall)  
 W2 - Full Height Window (Approx. 300mm high parapet wall)  
 Unless otherwise indicated all windows will be standard height windows.



The coloured floor plan is not intended to demarcate the boundary of the flat.



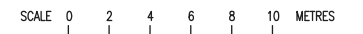
BLOCK 207C  
(10TH TO 11TH, 14TH STOREY FLOOR PLAN)

LEGEND:

- 2 ROOM FLEXI (TYPE 2)
- 3 ROOM
- 4 ROOM

UNITS AT AND ABOVE 4TH STOREY ARE HIGHER THAN THE MAIN ROOF GARDEN LEVEL OF BLOCK 207

W1 - Three Quarter Height Window (Approx. 550mm high parapet wall)  
 W2 - Full Height Window (Approx. 300mm high parapet wall)  
 Unless otherwise indicated all windows will be standard height windows.



The coloured floor plan is not intended to demarcate the boundary of the flat.



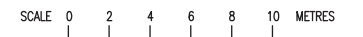
BLOCK 207C  
(12TH TO 13TH STOREY FLOOR PLAN)

LEGEND:

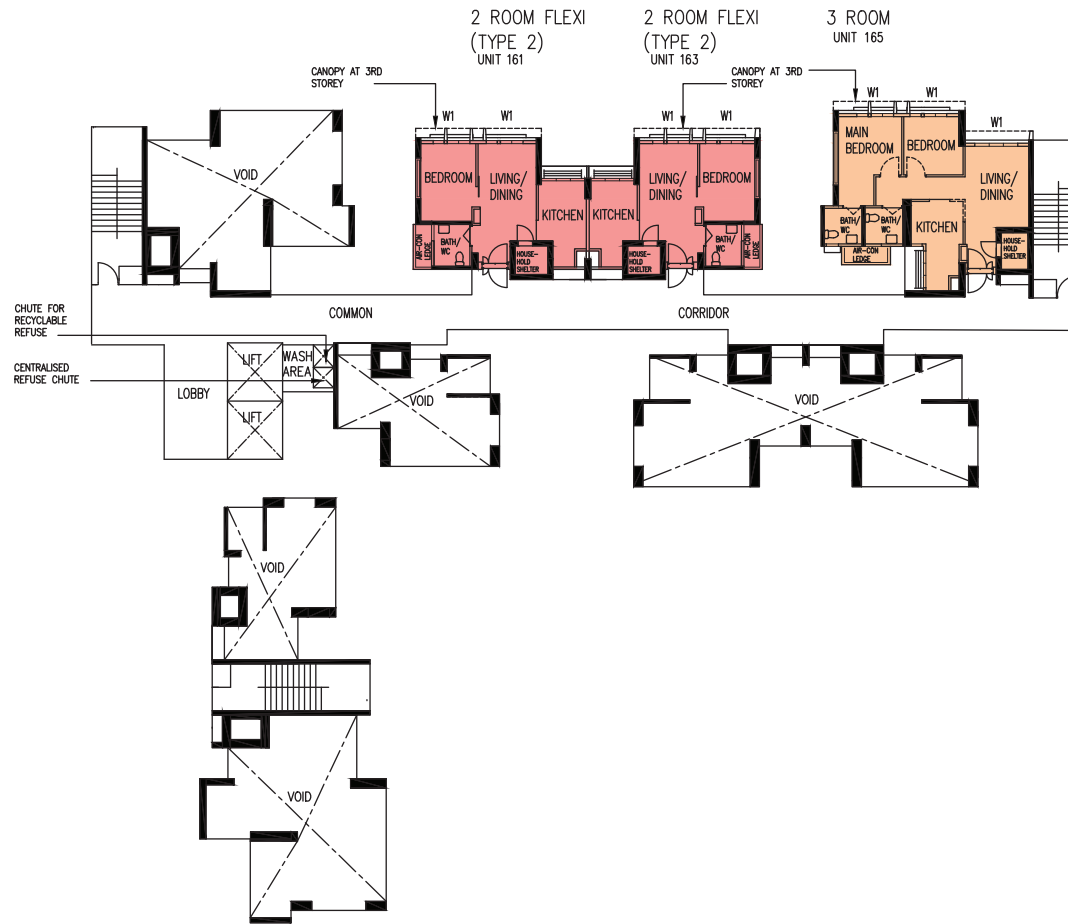
UNITS AT AND ABOVE 4TH STOREY ARE HIGHER THAN THE MAIN ROOF GARDEN LEVEL OF BLOCK 207

- 2 ROOM FLEXI (TYPE 2)
- 3 ROOM
- 4 ROOM

W1 - Three Quarter Height Window (Approx. 550mm high parapet wall)  
 W2 - Full Height Window (Approx. 300mm high parapet wall)  
 Unless otherwise indicated all windows will be standard height windows.



The coloured floor plan is not intended to demarcate the boundary of the flat.



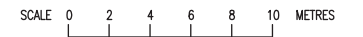
BLOCK 207D  
(3RD STOREY FLOOR PLAN)

LEGEND:

UNITS AT AND ABOVE 4TH STOREY ARE HIGHER THAN THE MAIN ROOF GARDEN LEVEL OF BLOCK 207

- 2 ROOM FLEXI (TYPE 2)
- 3 ROOM

W1 - Three Quarter Height Window (Approx. 550mm high parapet wall)  
 W2 - Full Height Window (Approx. 300mm high parapet wall)  
 Unless otherwise indicated all windows will be standard height windows.



The coloured floor plan is not intended to demarcate the boundary of the flat.



BLOCK 207D  
(4TH STOREY FLOOR PLAN)

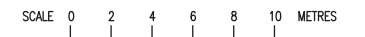
UNITS AT AND ABOVE 4TH STOREY ARE HIGHER THAN THE MAIN ROOF GARDEN LEVEL OF BLOCK 207

LEGEND:

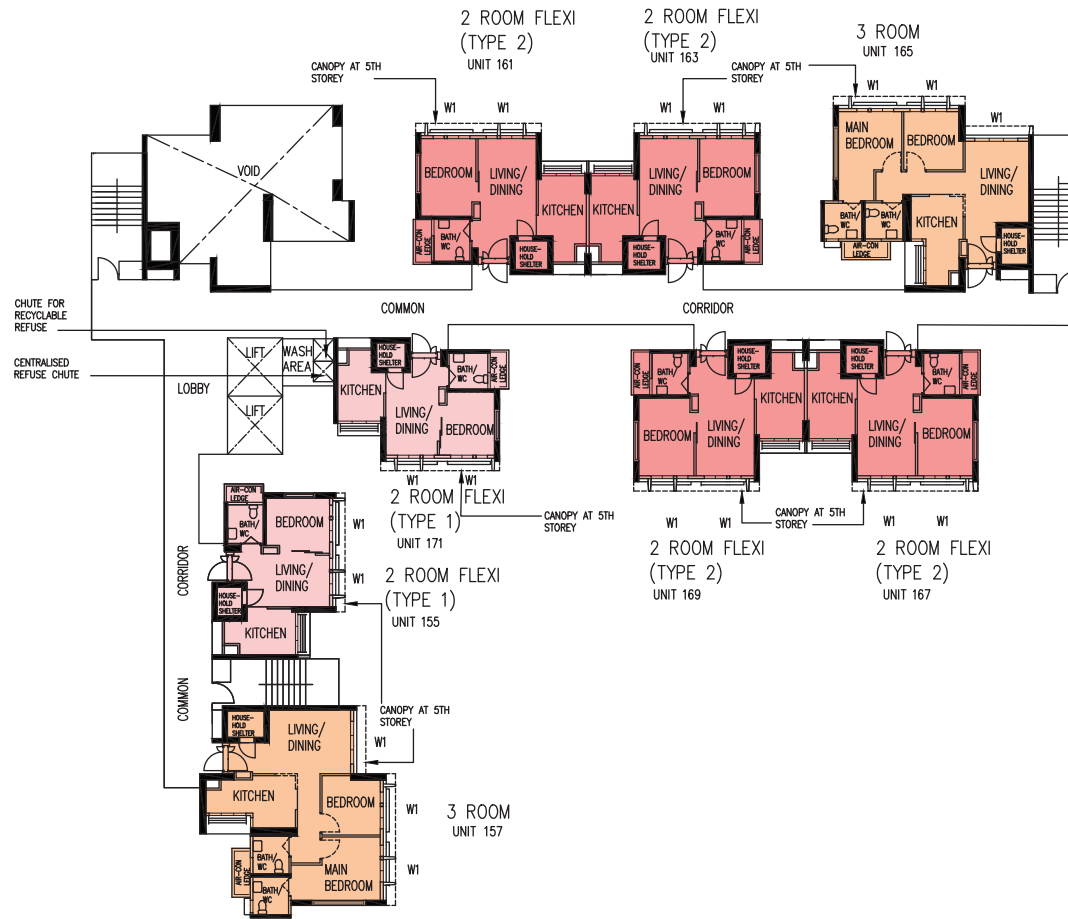
- 2 ROOM FLEXI (TYPE 1)
- 2 ROOM FLEXI (TYPE 2)
- 3 ROOM

FOR 2-ROOM FLEXI (TYPE 1) FLATS, THE NUMBER OF PANELS FOR THE SLIDING PARTITION BETWEEN THE BEDROOM AND LIVING ROOM WILL DIFFER DEPENDING ON THE SELECTION OF THE OPTIONAL COMPONENT SCHEME (OCS), WHERE APPLICABLE

W1 - Three Quarter Height Window (Approx. 550mm high parapet wall)  
 W2 - Full Height Window (Approx. 300mm high parapet wall)  
 Unless otherwise indicated all windows will be standard height windows.



The coloured floor plan is not intended to demarcate the boundary of the flat.



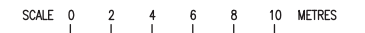
BLOCK 207D  
(5TH STOREY FLOOR PLAN)

LEGEND:

- 2 ROOM FLEXI (TYPE 1)
- 2 ROOM FLEXI (TYPE 2)
- 3 ROOM

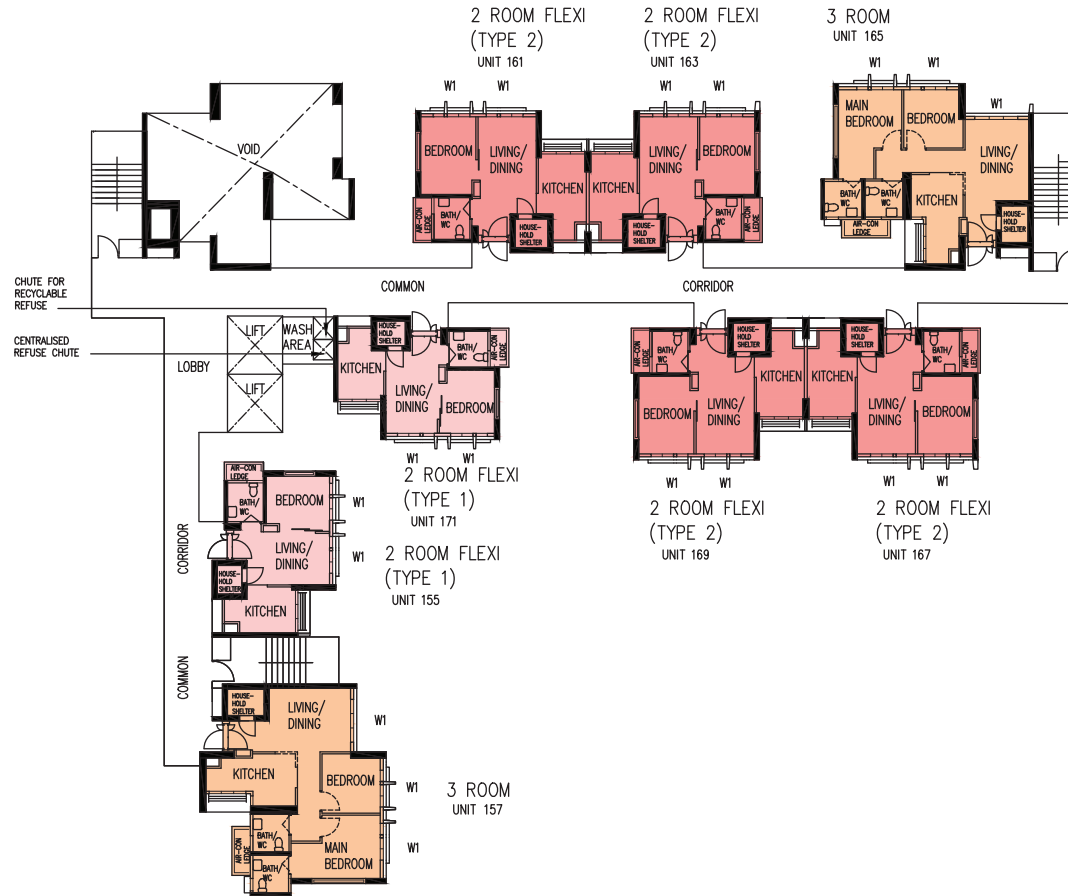
UNITS AT AND ABOVE 4TH STOREY ARE HIGHER THAN THE MAIN ROOF GARDEN LEVEL OF BLOCK 207  
 FOR 2-ROOM FLEXI (TYPE 1) FLATS, THE NUMBER OF PANELS FOR THE SLIDING PARTITION BETWEEN THE BEDROOM AND LIVING ROOM WILL DIFFER DEPENDING ON THE SELECTION OF THE OPTIONAL COMPONENT SCHEME (OCS), WHERE APPLICABLE

W1 - Three Quarter Height Window (Approx. 550mm high parapet wall)  
 W2 - Full Height Window (Approx. 300mm high parapet wall)  
 Unless otherwise indicated all windows will be standard height windows.



The coloured floor plan is not intended to demarcate the boundary of the flat.





BLOCK 207D  
(6TH STOREY FLOOR PLAN)

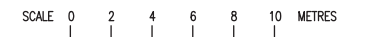
LEGEND:

- 2 ROOM FLEXI (TYPE 1)
- 2 ROOM FLEXI (TYPE 2)
- 3 ROOM

UNITS AT AND ABOVE 4TH STOREY ARE HIGHER THAN THE MAIN ROOF GARDEN LEVEL OF BLOCK 207

FOR 2-ROOM FLEXI (TYPE 1) FLATS, THE NUMBER OF PANELS FOR THE SLIDING PARTITION BETWEEN THE BEDROOM AND LIVING ROOM WILL DIFFER DEPENDING ON THE SELECTION OF THE OPTIONAL COMPONENT SCHEME (OCS), WHERE APPLICABLE

W1 - Three Quarter Height Window (Approx. 550mm high parapet wall)  
 W2 - Full Height Window (Approx. 300mm high parapet wall)  
 Unless otherwise indicated all windows will be standard height windows.



The coloured floor plan is not intended to demarcate the boundary of the flat.



BLOCK 207D  
(7TH STOREY FLOOR PLAN)

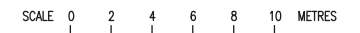
LEGEND:

- 2 ROOM FLEXI (TYPE 1)
- 2 ROOM FLEXI (TYPE 2)
- 3 ROOM

UNITS AT AND ABOVE 4TH STOREY ARE HIGHER THAN THE MAIN ROOF GARDEN LEVEL OF BLOCK 207

FOR 2-ROOM FLEXI (TYPE 1) FLATS, THE NUMBER OF PANELS FOR THE SLIDING PARTITION BETWEEN THE BEDROOM AND LIVING ROOM WILL DIFFER DEPENDING ON THE SELECTION OF THE OPTIONAL COMPONENT SCHEME (OCS), WHERE APPLICABLE

W1 - Three Quarter Height Window (Approx. 550mm high parapet wall)  
W2 - Full Height Window (Approx. 300mm high parapet wall)  
Unless otherwise indicated all windows will be standard height windows.



The coloured floor plan is not intended to demarcate the boundary of the flat.



BLOCK 207D  
(8TH STOREY FLOOR PLAN)

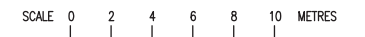
LEGEND:

- 2 ROOM FLEXI (TYPE 1)
- 2 ROOM FLEXI (TYPE 2)
- 3 ROOM

UNITS AT AND ABOVE 4TH STOREY ARE HIGHER THAN THE MAIN ROOF GARDEN LEVEL OF BLOCK 207

FOR 2-ROOM FLEXI (TYPE 1) FLATS, THE NUMBER OF PANELS FOR THE SLIDING PARTITION BETWEEN THE BEDROOM AND LIVING ROOM WILL DIFFER DEPENDING ON THE SELECTION OF THE OPTIONAL COMPONENT SCHEME (OCS), WHERE APPLICABLE

W1 - Three Quarter Height Window (Approx. 550mm high parapet wall)  
 W2 - Full Height Window (Approx. 300mm high parapet wall)  
 Unless otherwise indicated all windows will be standard height windows.



The coloured floor plan is not intended to demarcate the boundary of the flat.



BLOCK 207D  
(9TH STOREY FLOOR PLAN)

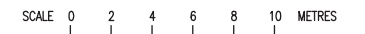
LEGEND:

- 2 ROOM FLEXI (TYPE 1)
- 2 ROOM FLEXI (TYPE 2)
- 3 ROOM

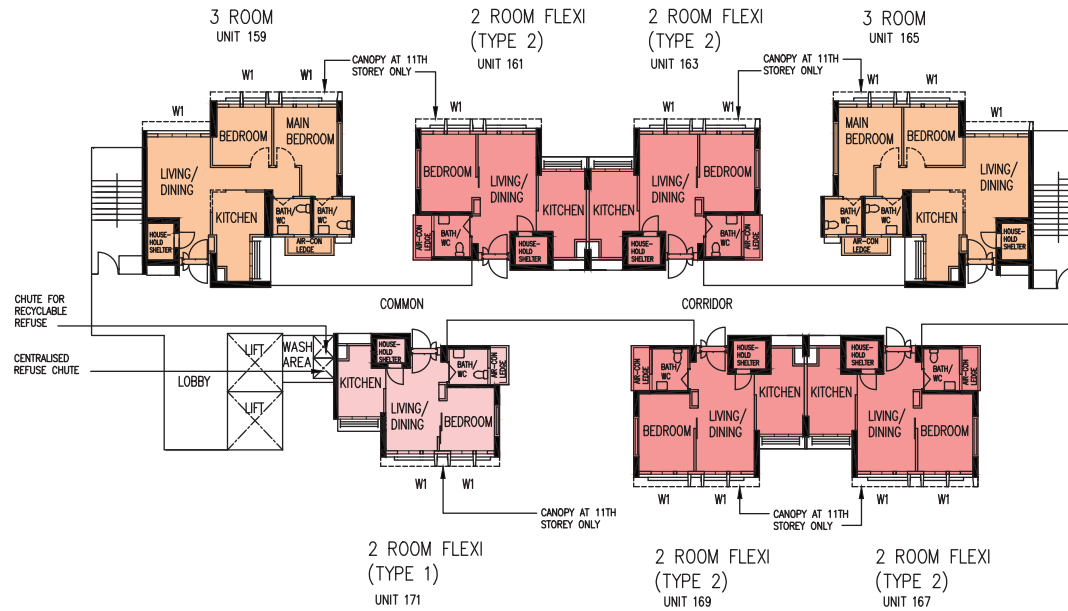
UNITS AT AND ABOVE 4TH STOREY ARE HIGHER THAN THE MAIN ROOF GARDEN LEVEL OF BLOCK 207

FOR 2-ROOM FLEXI (TYPE 1) FLATS, THE NUMBER OF PANELS FOR THE SLIDING PARTITION BETWEEN THE BEDROOM AND LIVING ROOM WILL DIFFER DEPENDING ON THE SELECTION OF THE OPTIONAL COMPONENT SCHEME (OCS), WHERE APPLICABLE

W1 - Three Quarter Height Window (Approx. 550mm high parapet wall)  
 W2 - Full Height Window (Approx. 300mm high parapet wall)  
 Unless otherwise indicated all windows will be standard height windows.



The coloured floor plan is not intended to demarcate the boundary of the flat.



BLOCK 207D  
(10TH TO 11TH, 14TH STOREY FLOOR PLAN)

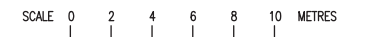
LEGEND:

- 2 ROOM FLEXI (TYPE 1)
- 2 ROOM FLEXI (TYPE 2)
- 3 ROOM

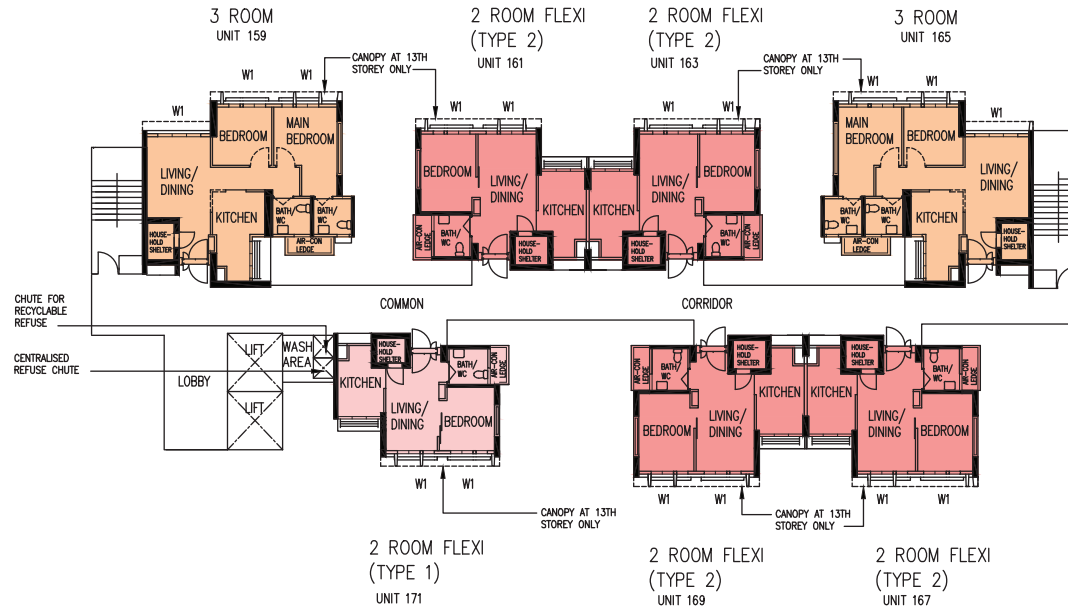
UNITS AT AND ABOVE 4TH STOREY ARE HIGHER THAN THE MAIN ROOF GARDEN LEVEL OF BLOCK 207

FOR 2-ROOM FLEXI (TYPE 1) FLATS, THE NUMBER OF PANELS FOR THE SLIDING PARTITION BETWEEN THE BEDROOM AND LIVING ROOM WILL DIFFER DEPENDING ON THE SELECTION OF THE OPTIONAL COMPONENT SCHEME (OCS), WHERE APPLICABLE

W1 - Three Quarter Height Window (Approx. 550mm high parapet wall)  
 W2 - Full Height Window (Approx. 300mm high parapet wall)  
 Unless otherwise indicated all windows will be standard height windows.



The coloured floor plan is not intended to demarcate the boundary of the flat.



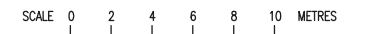
BLOCK 207D  
(12TH TO 13TH STOREY FLOOR PLAN)

LEGEND:

- 2 ROOM FLEXI (TYPE 1)
- 2 ROOM FLEXI (TYPE 2)
- 3 ROOM

UNITS AT AND ABOVE 4TH STOREY ARE HIGHER THAN THE MAIN ROOF GARDEN LEVEL OF BLOCK 207  
FOR 2-ROOM FLEXI (TYPE 1) FLATS, THE NUMBER OF PANELS FOR THE SLIDING PARTITION BETWEEN THE BEDROOM AND LIVING ROOM WILL DIFFER DEPENDING ON THE SELECTION OF THE OPTIONAL COMPONENT SCHEME (OCS), WHERE APPLICABLE

W1 - Three Quarter Height Window (Approx. 550mm high parapet wall)  
W2 - Full Height Window (Approx. 300mm high parapet wall)  
Unless otherwise indicated all windows will be standard height windows.



The coloured floor plan is not intended to demarcate the boundary of the flat.

# General Specifications For Woodleigh Glen

## For 2-Room Flexi (short lease)

### Foundation

Piled foundations.

### Structure

Reinforced concrete structural framework with reinforced concrete slabs.

### Roof

Reinforced concrete roof slab with precast concrete secondary roofing.

### Walls

All external and internal walls are constructed with reinforced concrete / solid blocks / bricks with cement plastering/ precast panels/ precast lightweight concrete partitions / drywall partition system.

### Windows

Aluminium framed windows with tinted glass.

### Doors

|                   |  |
|-------------------|--|
| Entrance          | : decorative solid timber door and metal gate                            |
| Bedroom           | : laminated semi-solid timber sliding partition / door, where applicable |
| Bathroom/ WC      | : laminated UPVC folding door  |
| Household Shelter | : metal door   |

### Finishes

|                               |  |
|-------------------------------|--|
| Ceilings                      | : skim coated or plastered and painted                         |
| Kitchen/ Bathroom/ WC Walls   | : ceramic tiles  |
| Other Walls                   | : skim coated or plastered and painted                         |
| Living/ Dining/ Bedroom Floor | : vinyl strip flooring with laminated UPVC skirting (optional) |
| Kitchen Floor                 | : glazed porcelain tiles                                       |
| Bathroom/ WC Floor            | : ceramic tiles  |
| Household Shelter Floor       | : glazed porcelain tiles                                       |

### Fittings

Quality Locksets  
Water Closet Suite  
Clothes Drying Rack  
Grab Bars  
Wash basin with tap mixer, bath/ shower mixer with shower set (optional)  
Built-in kitchen cabinets with gas hob and cooker hood, kitchen sink and dish drying rack (optional)  
Built-in Wardrobe (optional)  
Window Grilles (optional)  
Water Heater (optional)  
Lighting (optional)

### Services

Gas services and concealed water supply pipes  
Exposed sanitary stacks at Air-con ledge  
Concealed electrical wiring to lighting and power points (including water heater and air-conditioning points)  
Television points  
Data points

### Important Notes

- 1) The Household Shelter is designed for use as civil defence shelter. The walls, ceiling, floor and door of the Household Shelter shall not be hacked, drilled, altered or removed.
- 2) Air-con panel in the main bedroom will not be provided.
- 3) Laminated UPVC door frame shall be provided to all Bathroom/ WC door openings.
- 4) Any unused or unoccupied open spaces in front of or nearby/ adjacent to the flat units are not available for purchase and that the HDB will not entertain any requests from the flat owners to purchase and/ or enclose the unused or unoccupied open spaces.
- 5) The details of services in a flat, e.g. gas pipes, water pipes, sanitary stacks, electrical wiring, television points, data points, etc. are not indicated on the plans.
- 6) When selecting the flat, buyers may opt for items listed above as optional under the Optional Component Scheme. The cost of the optional items opted for will be added to the purchase price of the flat.

You are advised to visit HDB's website at [www.hdb.gov.sg](http://www.hdb.gov.sg) for information on renovation rules.

# General Specifications For Woodleigh Glen

## For 2-Room Flexi, 3-Room, 4-Room

### Foundation

Piled foundations.

### Structure

Reinforced concrete structural framework with reinforced concrete slabs .

### Roof

Reinforced concrete roof slab with precast concrete secondary roofing.

### Walls

All external and internal walls are constructed with reinforced concrete/solid blocks/bricks with cement plastering/precast panels/precast lightweight concrete partitions/ drywall partition system.

### Windows

Aluminium framed windows with tinted glass.

### Doors

|                   |   |
|-------------------|---|
| Entrance          | : decorative solid timber door and metal gate   |
| Bedroom           | : laminated semi-solid timber door (optional)   |
| Bathroom/ WC      | : laminated semi-solid timber sliding partition / door for 2-Room Flexi, where applicable |
| Household Shelter | : laminated UPVC folding door (optional)  |
|                   | : laminated UPVC folding door for 2-Room Flexi  |
|                   | : metal door  |

### Finishes

|                               |   |
|-------------------------------|---|
| Ceilings                      | : skim coated or plastered and painted  |
| Kitchen/ Bathroom/ WC Walls   | : ceramic tiles   |
| Other Walls                   | : skim coated or plastered and painted  |
| Living/ Dining Floor          | : polished porcelain tiles with laminated UPVC skirting (optional)              |
| Bedroom Floor                 | : vinyl strip flooring with laminated UPVC skirting (optional)                  |
| Living/ Dining/ Bedroom Floor | : vinyl strip flooring with laminated UPVC skirting for 2-Room Flexi (optional) |
| Kitchen Floor                 | : glazed porcelain tiles  |
| Bathroom/ WC Floor            | : ceramic tiles   |
| Household Shelter Floor       | : glazed porcelain tiles  |

### Fittings

Quality Locksets  
Water Closet Suite  
Clothes Drying Rack  
Wash basin with tap mixer, bath/ shower mixer with shower set (optional)

### Services

Gas services and concealed water supply pipes  
Exposed sanitary stacks (which can be located at / or Air-con ledge)  
Concealed electrical wiring to lighting and power points (including water heater and air-conditioning points)  
Television points  
Data points

### Important Notes

- 1) The Household Shelter is designed for use as civil defence shelter. The walls, ceiling, floor and door of the Household Shelter shall not be hacked, drilled, altered or removed.
- 2) Air-con panel in the main bedroom will not be provided.
- 3) Laminated UPVC door frame shall be provided to all Bathroom/ WC door openings.
- 4) Any unused or unoccupied open spaces in front of or nearby/ adjacent to the flat units are not available for purchase and that the HDB will not entertain any requests from the flat owners to purchase and/ or enclose the unused or unoccupied open spaces.
- 5) The details of services in a flat, e.g. gas pipes, water pipes, sanitary stacks, electrical wiring, television points, data points, etc. are not indicated on the plans.
- 6) When selecting the flat, buyers may opt for items listed above as optional under the Optional Component Scheme. The cost of the optional items opted for will be added to the purchase price of the flat.

You are advised to visit HDB's website at [www.hdb.gov.sg](http://www.hdb.gov.sg) for information on renovation rules.



# Disclaimer

- 1) HDB owns the copyright in all information, maps, and plans of this brochure.
- 2) The content provided in this brochure is not intended to form part of any offer or contract for the sale of flats. They are provided for your general information only, and are not statements or representations of fact.
- 3) Visual representations, such as pictures, art renderings, depictions, illustrations, photographs, drawings, as well as other graphic representations and references, are only artistic impressions. They are provided for your general information only, and are not representations of fact.
- 4) The information on this project, including but not limited to the dimensions, areas, plans, colour schemes, descriptions, and specifications, are subject to change or review without notice at our sole discretion or if required by the relevant authorities.
- 5) We may at any time, without any notice and at our sole discretion, change any aspect of this project, including but not limited to the omission, amalgamation, increase, or reduction of amenities and facilities, colour schemes, design features, and specifications.
- 6) We will not entertain any request for alteration of the layout or specifications of a flat to suit individual needs.
- 7) While reasonable care has been taken in providing the information in this brochure, we do not warrant its accuracy. We shall not be responsible in any way for any damage or loss suffered by any person whether directly or indirectly as a result of reliance on the said information or as a result of any error or omission therein.
- 8) The floor areas shown are scaled strata areas and subject to final survey.
- 9) The surrounding land use, proposed facilities and their locations as shown in the maps and plans are indicative only and subject to change. They may include ancillary uses allowed under the Urban Redevelopment Authority's prevailing Development Control guidelines.
- 10) We reserve the right to use or allow the use of
  - the void deck in any Apartment block,
  - Car park;
  - Common property (such as precinct pavilion); or
  - Standalone community building,for:
  - Future amenities/ facilities (such as child care centres, elderly-related facilities, education centres, residents' committee centres, and day activity centres);
  - Commercial facilities (such as shops and eating houses);
  - Mechanical and electrical rooms; and
  - Such other facilities as we deem fit.
- 11) This brochure does not and is not intended to provide full and complete information of the guidelines or requirements of the relevant authorities. You are advised to approach the relevant authorities directly for full information and details of these guidelines and requirements.



Copyright © Housing & Development Board  
All rights reserved. January 2017

# OPTIONAL COMPONENT SCHEME (2-ROOM FLEXI FLATS)

The Optional Component Scheme (OCS) provides convenience for flat buyers, and is offered on an opt-in basis. Choose the OCS items you want before your flat selection appointment. The cost of the OCS items will be added to the selling price of the selected flat.

The 2-room Flexi flats come in 2 sizes: 36sqm and 45sqm, and are available either on a 99-year lease or short-lease.

All 2-room Flexi flats come with:

- floor finishes in the kitchen, household shelter and bathroom
- wall tiles in bathroom and kitchen
- sliding partition/ door for bedroom; folding bathroom door
- water closet suite in the bathroom



Grab bars will be installed for all short-lease flats to assist elderly buyers in moving around the flats

## FOR ALL 2-ROOM FLEXI FLATS

### PACKAGE 1

- Flooring in the living/ dining room and bedroom
- 3-panel sliding partition, separating the living room and bedroom (for 36sqm 2-room Flexi flat only)

Note:

*Those who opted out of Package 1 will be provided with a 2-panel sliding partition and short wall separating living room and bedroom.*



3-panel sliding partition



2-panel sliding partition

### PACKAGE 2

- Sanitary fittings, i.e. washbasin with tap mixer and shower set with bath/ shower mixer



*Disclaimer: All displays and images shown here are strictly for reference only and are subject to change without notice. The displays and images shown here are conceptual and indicative only and the colour schemes, design, dimensions, type, tonal differences and specifications may differ from the actual fittings installed in the flat.*

August 2016

# OPTIONAL COMPONENT SCHEME (2-ROOM FLEXI FLATS)

FOR SHORT-LEASE 2-ROOM FLEXI FLATS ONLY

**PACKAGE 3** offers elderly buyers the convenience of having a flat in move-in condition. It comprises:

## ELDERLY-FRIENDLY FITTINGS

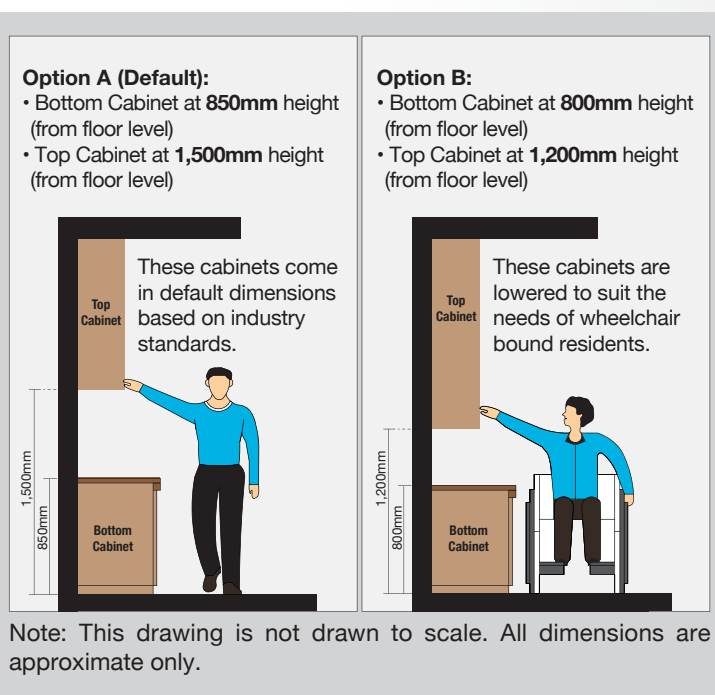


• Built-in kitchen cabinets with gas hob and cooker hood, kitchen sink, tap and dish drying rack

• Kitchen cabinets come with mobile cabinets to provide knee space (especially for wheelchair users)



• Built-in bedroom wardrobe with a lower clothes hanging rod for easy reach



• An option to have a lower counter top height

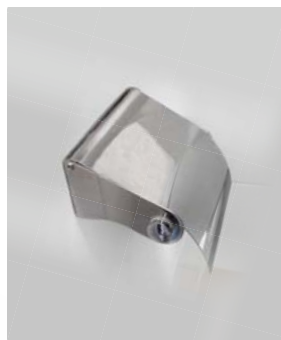
## OTHER FITTINGS



• Window grilles for safety and security



• Mirror



• Toilet roll holder



• Lighting (whole unit)



• Water heater

**Buyers who opt for Package 3 must select Package 1.**

*Disclaimer: All displays and images shown here are strictly for reference only and are subject to change without notice. The displays and images shown here are conceptual and indicative only and the colour schemes, design, dimensions, type, tonal differences and specifications may differ from the actual fittings installed in the flat.*

August 2016

# OPTIONAL COMPONENT SCHEME (3-, 4-, 5-ROOM AND 3GEN FLATS)

The Optional Component Scheme (OCS) provides convenience for flat buyers, and is offered on an opt-in basis. Choose the OCS items you want before your flat selection appointment. The cost of the OCS items will be added to the selling price of the selected flat.

The 3-, 4-, 5-room and 3Gen flats come with:

- floor finishes in the kitchen, household shelter, service yard and bathrooms
- wall tiles in the bathrooms and kitchen
- water closet suite in each bathroom

## YOU CAN CHOOSE TO HAVE THE FOLLOWING ITEMS INSTALLED IN YOUR SELECTED FLAT:

- Floor finishes for living/ dining room and bedrooms
- Internal doors + sanitary fittings
  - wash basin with tap mixer
  - shower set with bath/ shower mixer



Wash basin with tap mixer in attached bathroom



Wash basin with tap mixer



Handheld shower set with bath/ shower mixer

### KITCHEN PARTITION WALL (where feasible)

To provide buyers greater flexibility in terms of layout and design, some flats will come with an open kitchen concept. You can opt-in to have a partition wall between the living/ dining area and kitchen, if you do not want an open kitchen concept.

*Disclaimer: All displays and images shown here are strictly for reference only and are subject to change without notice. The displays and images shown here are conceptual and indicative only and the colour schemes, design, dimensions, type, tonal differences and specifications may differ from the actual fittings installed in the flat.*

August 2016