



Build-To-Order Jan 2014



Homes where dreams are built



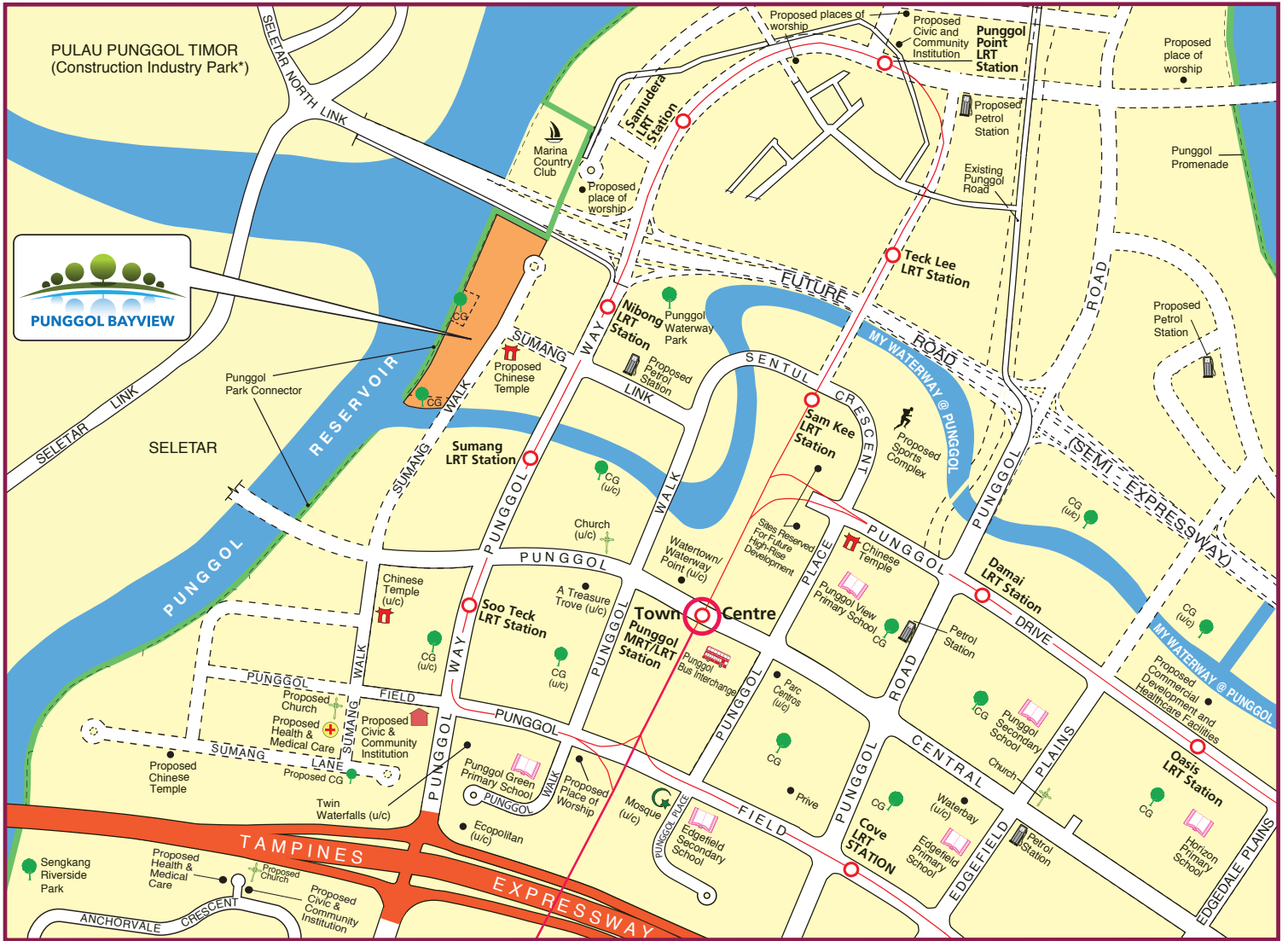
Artist's Impression

Waterfront Living


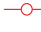
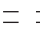

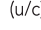
Punggol BayView is located along Sumang Walk and comprises ten residential blocks ranging from 8 to 22 storeys in height. You can take your pick from the 1,096 units of 3-, 4-, 5-room and 3Gen Premium Flats offered in this development.

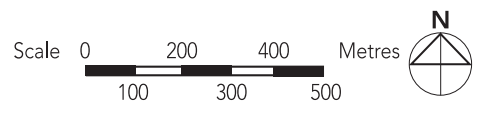
At Punggol BayView, the roof outline and facade colours of the residential blocks are designed to resemble sailboats docked along the bay. These residential blocks are lined along the periphery of the development, allowing you to take advantage of the breathtaking water views.





LEGEND:

-  MRT Line & Station
-  LRT Line & Station
-  Under Construction/ Future Road
-  CG Common Green
-  (u/c) Under Construction



* Construction Industry Park comprises construction-related developments such as pre-cast yards, ready-mixed concrete plants, workers' dormitories, and aggregate and sand stockpiles



Abundant Activities

At Punggol BayView, you will be able to enjoy a wide range of recreational facilities right at your doorstep. You can keep fit at the adult and elderly fitness stations while the young ones enjoy some playtime at the playgrounds. Rest shelters and green pocket spaces are also provided for intimate gatherings.

Alternatively, you can choose to visit the rooftop garden above the multi-storey car park for relaxation amidst lush greenery. Roof gardens can also be found atop the water-fronting residential blocks. These are open to the public, and serve as great viewing platforms. In addition, the nearby Punggol Park Connector gives you access to additional recreational facilities like fitness corners and children's playgrounds located at the nearby common green. You may also head to the beautiful waterfront promenade located along the side of the development facing Punggol Reservoir, and take a stroll along the timber boardwalk as you enjoy stunning views of the sunset.

For added convenience, a Residents' Committee Centre, an eating house, a restaurant, a supermarket and some shops will be provided within the development.

Eco-Friendly Living

Punggol BayView is designed to fulfil the vision of establishing Punggol as an Eco-Town. To support this vision, the development boasts numerous eco-friendly features:

- Separate chutes are provided for recyclable wastes
- Motion sensor controlled energy efficient lighting is installed at common staircases to reduce energy consumption
- Regenerative lifts are used to reduce energy consumption
- Eco-pedestals are used in bathrooms to encourage water conservation
- Rainwater harvesting system is provided to store rainwater for washing of common areas
- ABC Waters design features are incorporated to clean rainwater and beautify the landscape
- Bicycle stands are provided to encourage cycling as an environmentally friendly form of transport
- Sustainable and recycled products are used in the development



Separate chutes for recyclable wastes



Eco-pedestals



ABC Waters design features



Bicycle stands

Bountiful Living

Punggol BayView offers 3-, 4- and 5-room and 3Gen Premium Flats. These units come with full height windows in the living/ dining area and three-quarter height windows in the bedrooms. Some of the 4- and 5-room flats and all 3Gen flats come with a balcony.

The flats will come with floor finishes in the kitchen, household shelter, service yard and bathrooms. Wall tiles will also be provided in the bathrooms and kitchen. For added convenience, you may opt in to have floor finishes installed in the living/ dining room, bedrooms and balconies of your selected flat. You may also opt in to have sanitary fittings installed in the bathrooms - wash basin, water tap and shower mixer. These sanitary fittings, together with internal doors, will be offered as a package. The cost of installing these optional components will be added to the selling price of the flat.



To provide a sense of spaciousness and greater flexibility in furniture layout and design, all flats in Punggol BayView will come with an open kitchen concept. You can carry out the necessary extensions to the electrical, water and gas points provided in the kitchen as part of your renovation plans. Alternatively, you may opt in to have a partition wall installed between the living/ dining area and kitchen. The cost of this optional wall will be added to the selling price of the flat.

Open Kitchen Concept (Default)



LAYOUT IDEAS FOR 3-ROOM
 APPROX. FLOOR AREA 68 sqm
 (inclusive of Internal Floor Area 65 sqm and Air-Con Ledge)

With Kitchen Partition Wall



LAYOUT IDEAS FOR 3-ROOM
 APPROX. FLOOR AREA 68 sqm
 (inclusive of Internal Floor Area 65 sqm and Air-Con Ledge)

Open Kitchen Concept (Default)



LAYOUT IDEAS FOR 4-ROOM
 APPROX. FLOOR AREA 93 sqm
 (inclusive of Internal Floor Area 90 sqm and Air-Con Ledge)

With Kitchen Partition Wall



LAYOUT IDEAS FOR 4-ROOM
 APPROX. FLOOR AREA 93 sqm
 (inclusive of Internal Floor Area 90 sqm and Air-Con Ledge)



LAYOUT IDEAS FOR 4-ROOM
 APPROX. FLOOR AREA 93 sqm
 (inclusive of Internal Floor Area 90 sqm and Air-Con Ledge)



LAYOUT IDEAS FOR 4-ROOM
 APPROX. FLOOR AREA 93 sqm
 (inclusive of Internal Floor Area 90 sqm and Air-Con Ledge)



LAYOUT IDEAS FOR 4-ROOM
 APPROX. FLOOR AREA 96 sqm
 (inclusive of Internal Floor Area 93 sqm and Air-Con Ledge)



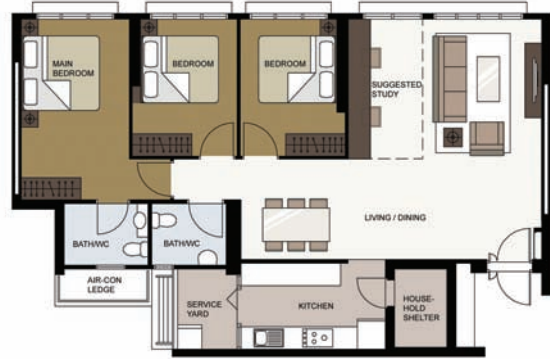
LAYOUT IDEAS FOR 4-ROOM
 APPROX. FLOOR AREA 96 sqm
 (inclusive of Internal Floor Area 93 sqm and Air-Con Ledge)

Open Kitchen Concept (Default)



LAYOUT IDEAS FOR 5-ROOM
 APPROX. FLOOR AREA 113 sqm
 (inclusive of Internal Floor Area 110 sqm and Air-Con Ledge)

With Kitchen Partition Wall



LAYOUT IDEAS FOR 5-ROOM
 APPROX. FLOOR AREA 113 sqm
 (inclusive of Internal Floor Area 110 sqm and Air-Con Ledge)



LAYOUT IDEAS FOR 5-ROOM
 APPROX. FLOOR AREA 116 sqm
 (inclusive of Internal Floor Area 113 sqm and Air-Con Ledge)



LAYOUT IDEAS FOR 5-ROOM
 APPROX. FLOOR AREA 116 sqm
 (inclusive of Internal Floor Area 113 sqm and Air-Con Ledge)



LAYOUT IDEAS FOR 5-ROOM
 APPROX. FLOOR AREA 121 sqm
 (inclusive of Internal Floor Area 118 sqm and Air-Con Ledge)



LAYOUT IDEAS FOR 5-ROOM
 APPROX. FLOOR AREA 121 sqm
 (inclusive of Internal Floor Area 118 sqm and Air-Con Ledge)

Open Kitchen Concept (Default)



LAYOUT IDEAS FOR 5-ROOM
APPROX. FLOOR AREA 122 sqm
(inclusive of Internal Floor Area 119 sqm and Air-Con Ledge)

With Kitchen Partition Wall



LAYOUT IDEAS FOR 5-ROOM
APPROX. FLOOR AREA 122 sqm
(inclusive of Internal Floor Area 119 sqm and Air-Con Ledge)

3Gen flats are introduced to cater to multi-generation families living under one roof. The 3Gen Flats in Punggol BayView will feature four bedrooms, three bathrooms (two en-suites) and a balcony, with an internal floor area of about 118 square metres.

Open Kitchen Concept (Default)



LAYOUT IDEAS FOR 3GEN FLAT
APPROX. FLOOR AREA 123 sqm
(inclusive of Internal Floor Area 118 sqm and Air-Con Ledge)

With Kitchen Partition Wall



LAYOUT IDEAS FOR 3GEN FLAT
APPROX. FLOOR AREA 123 sqm
(inclusive of Internal Floor Area 118 sqm and Air-Con Ledge)





Applicants are encouraged to visit the place before booking a flat.

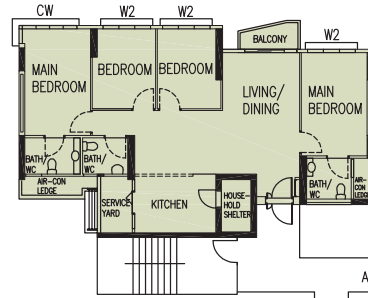


LEGEND

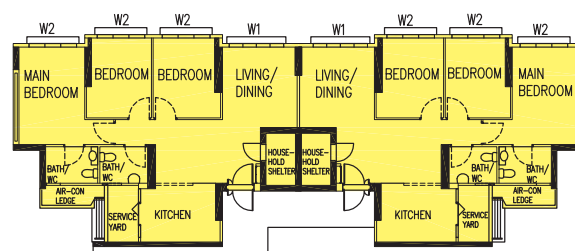
- 3-Room
- 4-Room
- 5-Room
- 3Gen Flat
- Surrounding Buildings
- Future Social Community Facilities (FSCF)/ Resident Committee Centre (RCC) at 1st storey
- Eating House (EH) / Restaurant (R) / Supermarket (SM) / Shops (S) at 1st Storey
- Linkway/Precinct Pavilion / Drop-off Porch / Shelter
- Trellis
- Adult Fitness Station (AFS) / Elderly Fitness Station (EFS) / Children Playground (PG)
- Electrical Sub-Station (ESS)
- Utility centre (UC) at 1st Storey
- Multi-Storey Car Park
- Open Space
- Reserved For/Existing Development
- Staircase
- Driveway
- Drainage Reserve
- Ramp
- Reservoir/Waterway
- Corridor
- Centralised Refuse Chute / Chute for Recyclable Refuse
- Lift
- Service Bay
- (U/C) Under Construction
- Rental Housing

Block Number	Number of storeys	3 ROOM	4 ROOM	5 ROOM	3GEN FLAT	Total	Lift opens at
322A	8/14/20	-	38	33	13	84	Every Storey
322B	8/14/20	-	38	33	13	84	Every Storey
322C	8/14/20	57	32	27	-	116	Every Storey
322D	10/20	19	76	37	-	132	Every Storey
323A	22	-	63	63	-	126	Every Storey
323B	22	-	63	63	-	126	Every Storey
323C	8/14/22	-	42	35	13	90	Every Storey
323D	8/14/22	-	42	35	13	90	Every Storey
325A	8/14/22	63	34	27	-	124	Every Storey
325B	8/14/22	63	34	27	-	124	Every Storey
Total		202	462	380	52	1096	

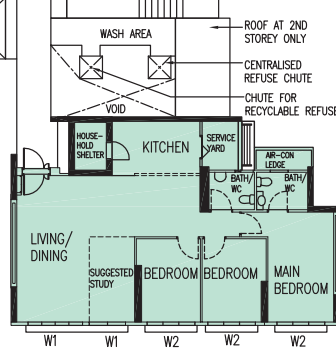
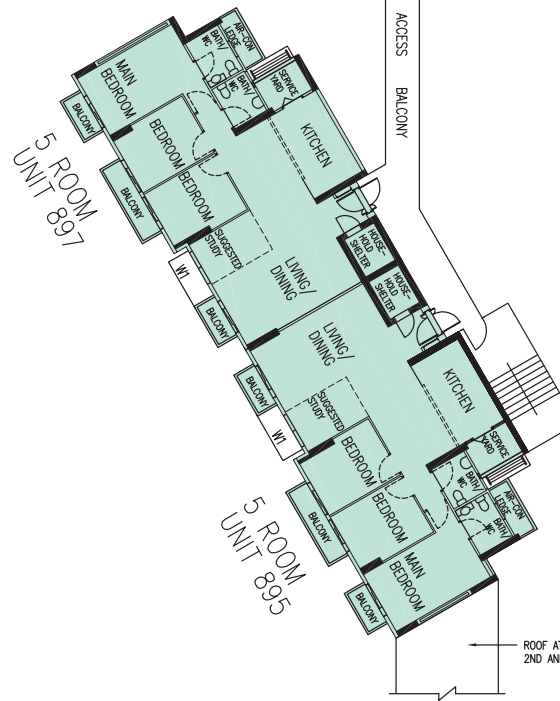
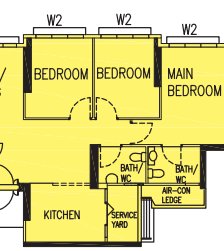
3GEN FLAT
UNIT 899



4 ROOM
UNIT 901



4 ROOM
UNIT 903



5 ROOM
UNIT 905

BLK 322A
(2ND TO 6TH STOREY FLOOR PLAN)

LEGEND:
UNLESS OTHERWISE INDICATED ALL WINDOWS
WILL BE STANDARD HEIGHT WINDOWS

4 ROOM

5 ROOM

3Gen

W1 - FULL HEIGHT WINDOW (APPROX. 300mm HIGH PARAPET WALL)

W2 - THREE QUARTER HEIGHT WINDOW (APPROX. 550mm HIGH PARAPET WALL)

CW - THREE QUARTER HEIGHT CORNER WINDOW (APPROX. 550mm HIGH PARAPET WALL)

The coloured floor plan is not intended to demarcate the boundary of the flat.

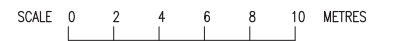
SCALE 0 2 4 6 8 10 METRES



BLK 32A
(7TH & 8TH STOREY FLOOR PLAN)

- LEGEND:
UNLESS OTHERWISE INDICATED ALL WINDOWS WILL BE STANDARD HEIGHT WINDOWS
- 4 ROOM
 - 5 ROOM
 - 3Gen
- W1 - FULL HEIGHT WINDOW (APPROX. 300mm HIGH PARAPET WALL)
 - W2 - THREE QUARTER HEIGHT WINDOW (APPROX. 550mm HIGH PARAPET WALL)
 - CW - THREE QUARTER HEIGHT CORNER WINDOW (APPROX. 550mm HIGH PARAPET WALL)

The coloured floor plan is not intended to demarcate the boundary of the flat.





LEGEND:
UNLESS OTHERWISE INDICATED ALL WINDOWS
WILL BE STANDARD HEIGHT WINDOWS

4 ROOM

5 ROOM

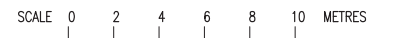
3Gen

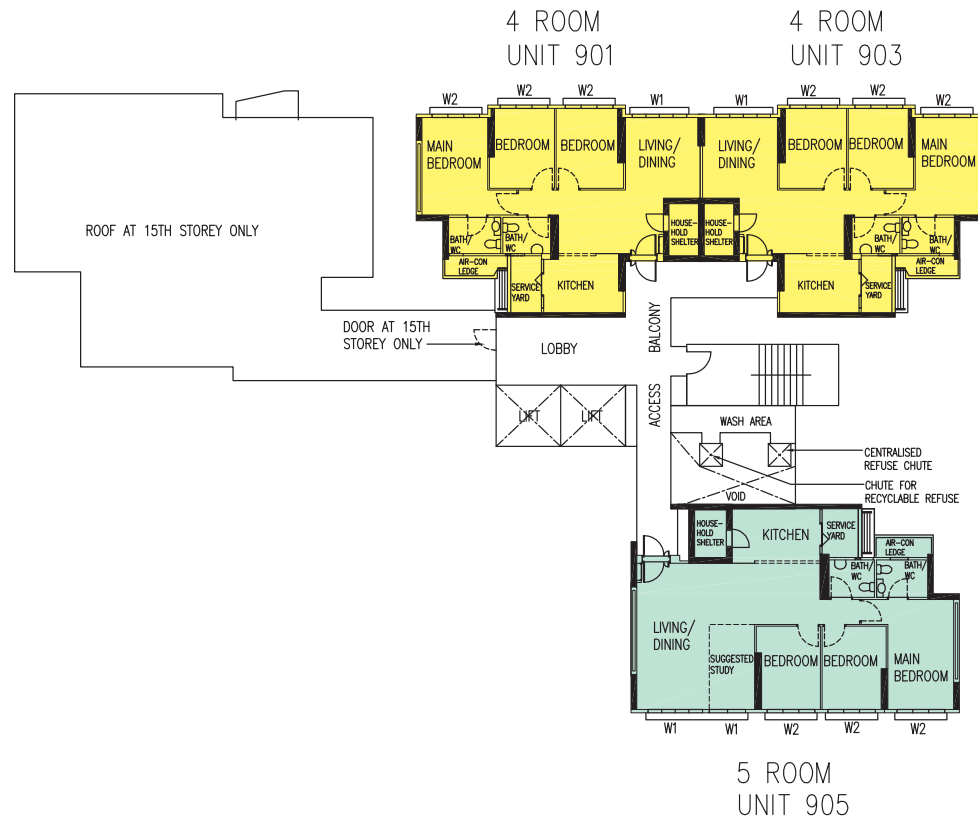
W1 - FULL HEIGHT WINDOW (APPROX. 300mm HIGH PARAPET WALL)

W2 - THREE QUARTER HEIGHT WINDOW (APPROX. 550mm HIGH PARAPET WALL)

CW - THREE QUARTER HEIGHT CORNER WINDOW (APPROX. 550mm HIGH PARAPET WALL)

The coloured floor plan is not intended to demarcate the boundary of the flat.





BLK 322A
(15TH STOREY FLOOR PLAN)

LEGEND:
UNLESS OTHERWISE INDICATED ALL WINDOWS
WILL BE STANDARD HEIGHT WINDOWS

4 ROOM

5 ROOM

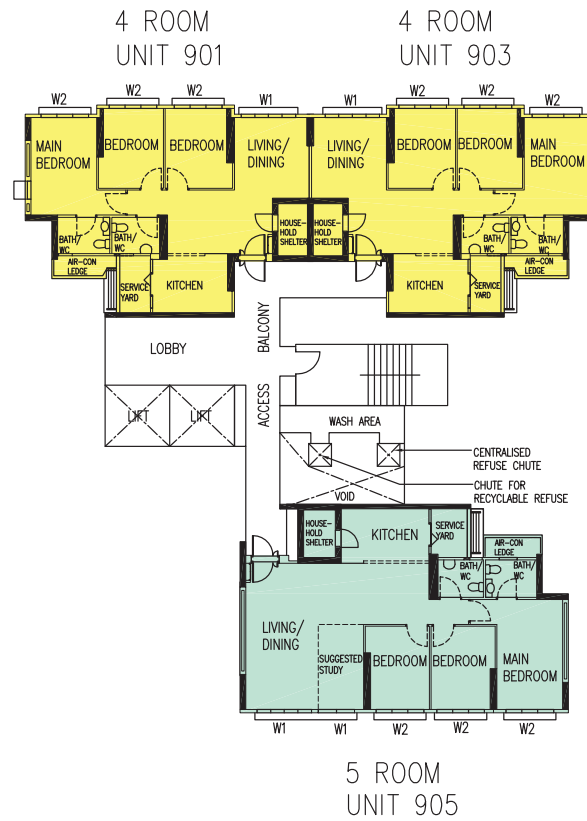
W1 - FULL HEIGHT WINDOW (APPROX. 300mm HIGH PARAPET WALL)

W2 - THREE QUARTER HEIGHT WINDOW (APPROX. 550mm HIGH PARAPET WALL)

CW - THREE QUARTER HEIGHT CORNER WINDOW (APPROX. 550mm HIGH PARAPET WALL)

The coloured floor plan is not intended to demarcate the boundary of the flat.

SCALE 0 2 4 6 8 10 METRES



BLK 322A
(16TH TO 18TH STOREY FLOOR PLAN)

LEGEND:
UNLESS OTHERWISE INDICATED ALL WINDOWS
WILL BE STANDARD HEIGHT WINDOWS

4 ROOM

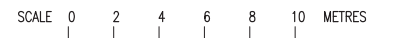
5 ROOM

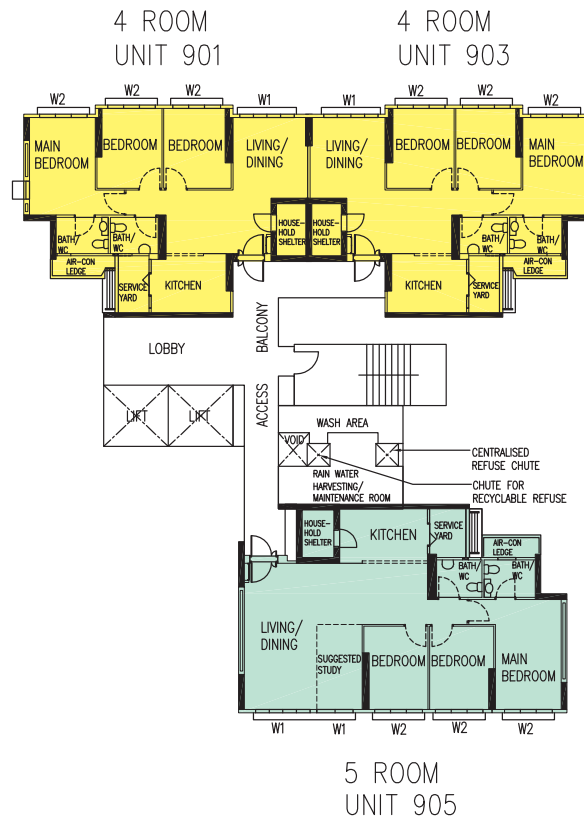
W1 - FULL HEIGHT WINDOW (APPROX. 300mm HIGH PARAPET WALL)

W2 - THREE QUARTER HEIGHT WINDOW (APPROX. 550mm HIGH PARAPET WALL)

CW - THREE QUARTER HEIGHT CORNER WINDOW (APPROX. 550mm HIGH PARAPET WALL)

The coloured floor plan is not intended to demarcate the boundary of the flat.

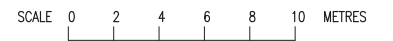


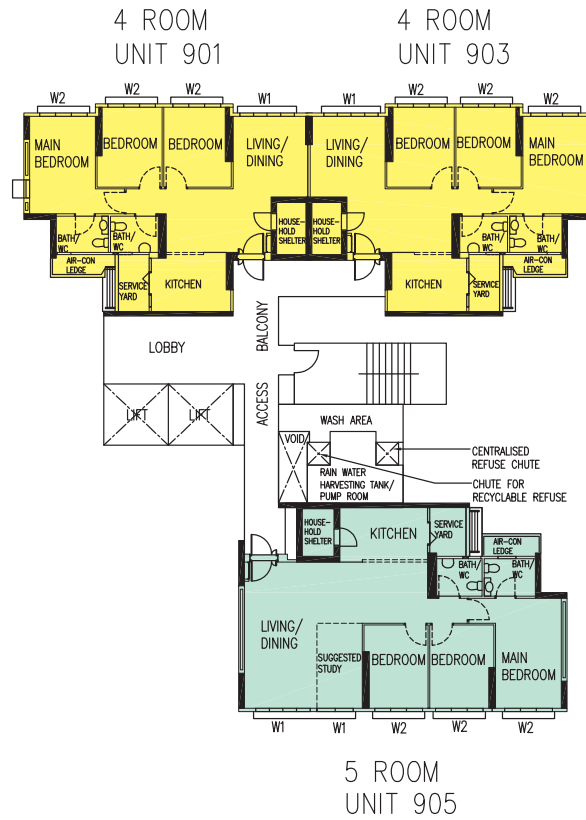


BLK 322A
(19TH STOREY FLOOR PLAN)

- LEGEND:
UNLESS OTHERWISE INDICATED ALL WINDOWS WILL BE STANDARD HEIGHT WINDOWS
- 4 ROOM
 - 5 ROOM
 - W1 - FULL HEIGHT WINDOW (APPROX. 300mm HIGH PARAPET WALL)
 - W2 - THREE QUARTER HEIGHT WINDOW (APPROX. 550mm HIGH PARAPET WALL)
 - CW - THREE QUARTER HEIGHT CORNER WINDOW (APPROX. 550mm HIGH PARAPET WALL)

The coloured floor plan is not intended to demarcate the boundary of the flat.





BLK 322A

(20TH STOREY FLOOR PLAN)

LEGEND:

UNLESS OTHERWISE INDICATED ALL WINDOWS WILL BE STANDARD HEIGHT WINDOWS

4 ROOM

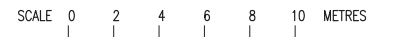
5 ROOM

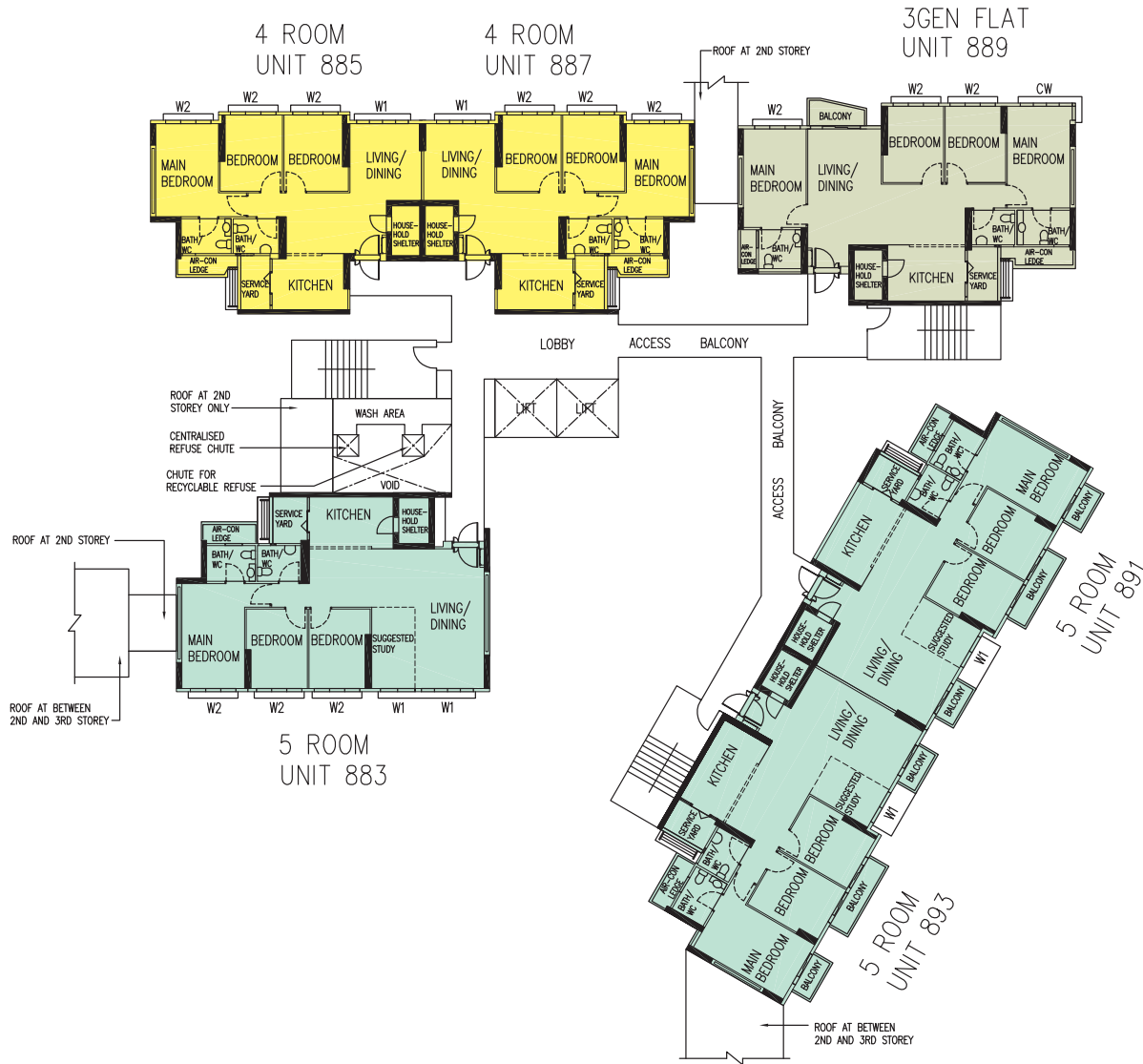
W1 - FULL HEIGHT WINDOW (APPROX. 300mm HIGH PARAPET WALL)

W2 - THREE QUARTER HEIGHT WINDOW (APPROX. 550mm HIGH PARAPET WALL)

CW - THREE QUARTER HEIGHT CORNER WINDOW (APPROX. 550mm HIGH PARAPET WALL)

The coloured floor plan is not intended to demarcate the boundary of the flat.





LEGEND:
UNLESS OTHERWISE INDICATED ALL WINDOWS
WILL BE STANDARD HEIGHT WINDOWS

4 ROOM

5 ROOM

3Gen

W1 - FULL HEIGHT WINDOW (APPROX. 300mm HIGH PARAPET WALL)

W2 - THREE QUARTER HEIGHT WINDOW (APPROX. 550mm HIGH PARAPET WALL)

CW - THREE QUARTER HEIGHT CORNER WINDOW (APPROX. 550mm HIGH PARAPET WALL)

The coloured floor plan is not intended to demarcate the boundary of the flat.

BLK 322B
(2ND TO 6TH STOREY FLOOR PLAN)

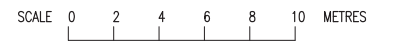
SCALE 0 2 4 6 8 10 METRES



BLK 322B
(7TH & 8TH STOREY FLOOR PLAN)

- LEGEND:
UNLESS OTHERWISE INDICATED ALL WINDOWS WILL BE STANDARD HEIGHT WINDOWS
- 4 ROOM
 - 5 ROOM
 - 3Gen
 - W1 - FULL HEIGHT WINDOW (APPROX. 300mm HIGH PARAPET WALL)
 - W2 - THREE QUARTER HEIGHT WINDOW (APPROX. 550mm HIGH PARAPET WALL)
 - CW - THREE QUARTER HEIGHT CORNER WINDOW (APPROX. 550mm HIGH PARAPET WALL)

The coloured floor plan is not intended to demarcate the boundary of the flat.





BLK 322B

(9TH TO 14TH STOREY FLOOR PLAN)

LEGEND:

UNLESS OTHERWISE INDICATED ALL WINDOWS WILL BE STANDARD HEIGHT WINDOWS

4 ROOM

5 ROOM

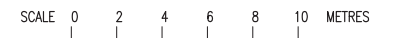
3Gen

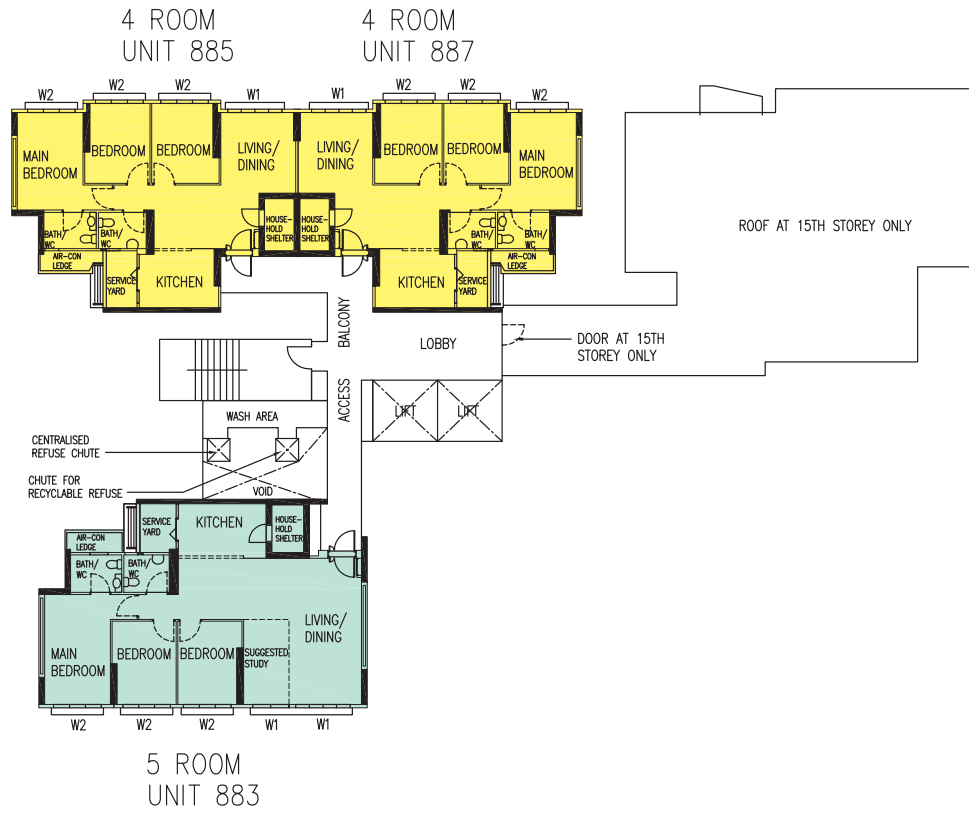
W1 - FULL HEIGHT WINDOW (APPROX. 300mm HIGH PARAPET WALL)

W2 - THREE QUARTER HEIGHT WINDOW (APPROX. 550mm HIGH PARAPET WALL)

CW - THREE QUARTER HEIGHT CORNER WINDOW (APPROX. 550mm HIGH PARAPET WALL)

The coloured floor plan is not intended to demarcate the boundary of the flat.





BLK 322B
(15TH STOREY FLOOR PLAN)

LEGEND:
UNLESS OTHERWISE INDICATED ALL WINDOWS
WILL BE STANDARD HEIGHT WINDOWS

4 ROOM

5 ROOM

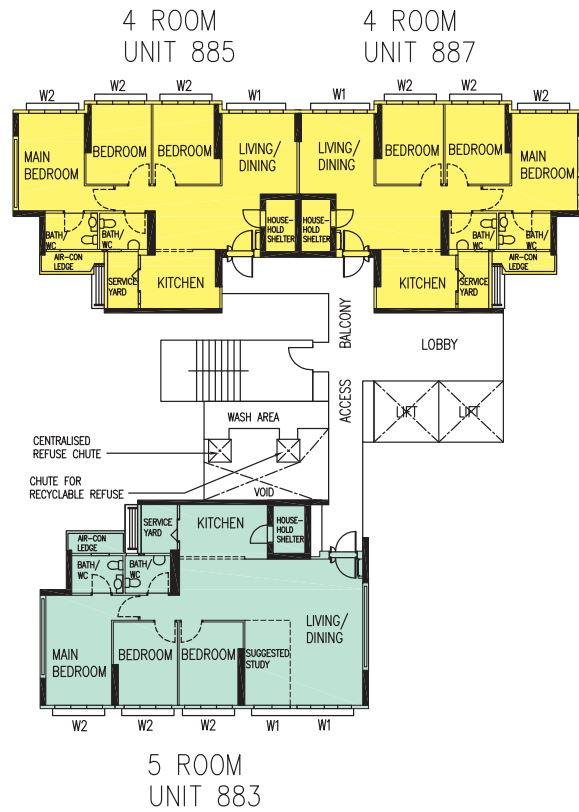
W1 - FULL HEIGHT WINDOW (APPROX. 300mm HIGH PARAPET WALL)

W2 - THREE QUARTER HEIGHT WINDOW (APPROX. 550mm HIGH PARAPET WALL)

CW - THREE QUARTER HEIGHT CORNER WINDOW (APPROX. 550mm HIGH PARAPET WALL)

The coloured floor plan is not intended to demarcate the boundary of the flat.

SCALE 0 2 4 6 8 10 METRES



LEGEND:
UNLESS OTHERWISE INDICATED ALL WINDOWS
WILL BE STANDARD HEIGHT WINDOWS

4 ROOM

5 ROOM

W1 - FULL HEIGHT WINDOW (APPROX. 300mm HIGH PARAPET WALL)

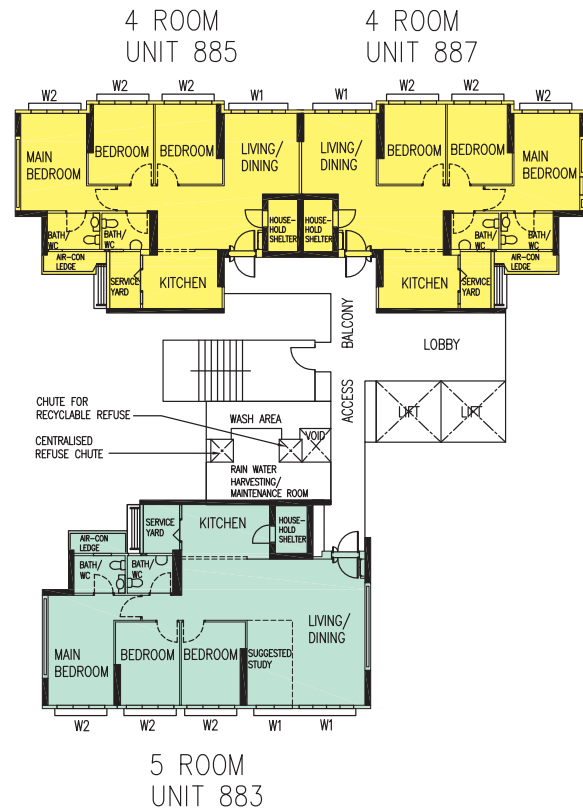
W2 - THREE QUARTER HEIGHT WINDOW (APPROX. 550mm HIGH PARAPET WALL)

CW - THREE QUARTER HEIGHT CORNER WINDOW (APPROX. 550mm HIGH PARAPET WALL)

The coloured floor plan is not intended to demarcate the boundary of the flat.

BLK 322B
(16TH TO 18TH STOREY FLOOR PLAN)

SCALE 0 2 4 6 8 10 METRES



BLK 322B
(19TH STOREY FLOOR PLAN)

LEGEND:
UNLESS OTHERWISE INDICATED ALL WINDOWS
WILL BE STANDARD HEIGHT WINDOWS

4 ROOM

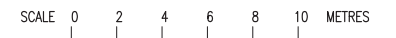
5 ROOM

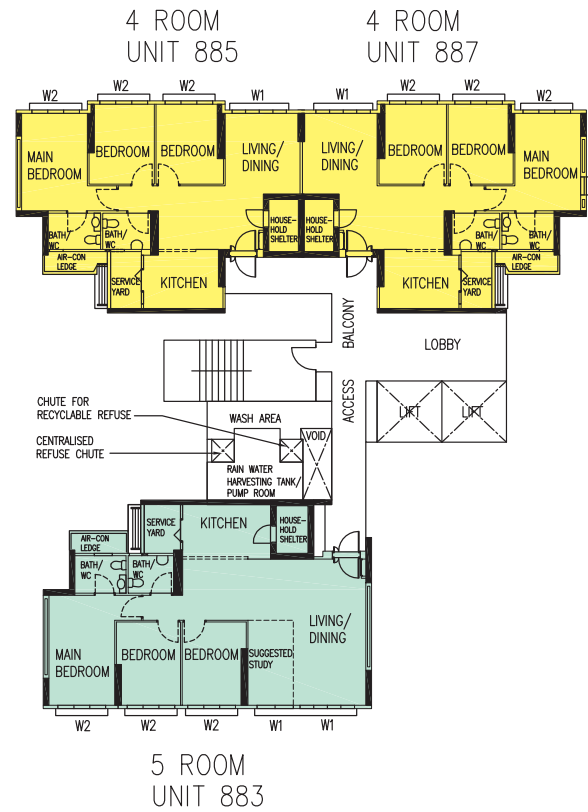
W1 - FULL HEIGHT WINDOW (APPROX. 300mm HIGH PARAPET WALL)

W2 - THREE QUARTER HEIGHT WINDOW (APPROX. 550mm HIGH PARAPET WALL)

CW - THREE QUARTER HEIGHT CORNER WINDOW (APPROX. 550mm HIGH PARAPET WALL)

The coloured floor plan is not intended to demarcate the boundary of the flat.





BLK 322B
(20TH STOREY FLOOR PLAN)

LEGEND:
UNLESS OTHERWISE INDICATED ALL WINDOWS
WILL BE STANDARD HEIGHT WINDOWS

4 ROOM

5 ROOM

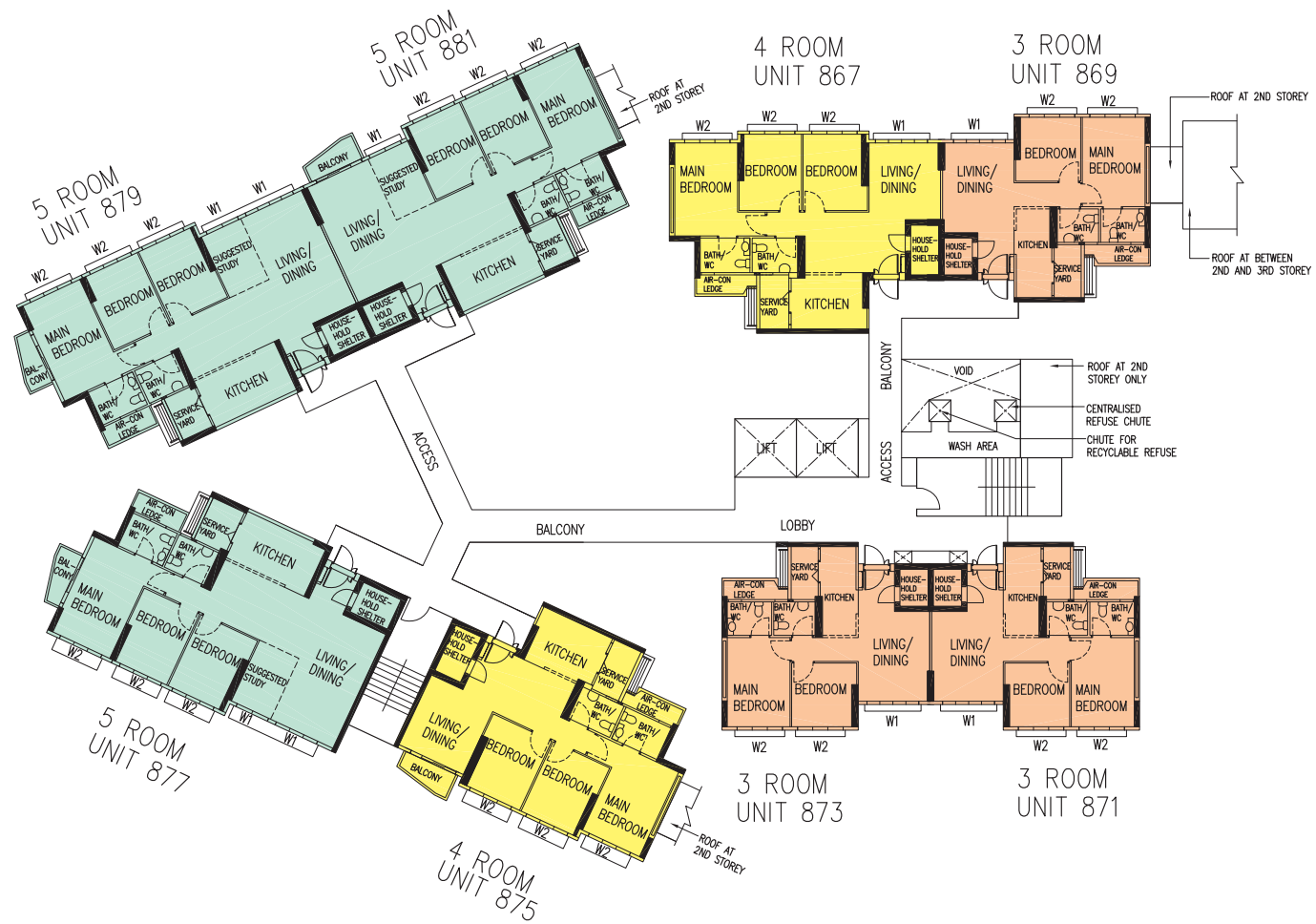
W1 - FULL HEIGHT WINDOW (APPROX. 300mm HIGH PARAPET WALL)

W2 - THREE QUARTER HEIGHT WINDOW (APPROX. 550mm HIGH PARAPET WALL)

CW - THREE QUARTER HEIGHT CORNER WINDOW (APPROX. 550mm HIGH PARAPET WALL)

The coloured floor plan is not intended to demarcate the boundary of the flat.

SCALE 0 2 4 6 8 10 METRES



BLK 322C
(2ND TO 8TH STOREY FLOOR PLAN)

LEGEND:
UNLESS OTHERWISE INDICATED ALL WINDOWS
WILL BE STANDARD HEIGHT WINDOWS

3 ROOM

4 ROOM

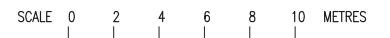
5 ROOM

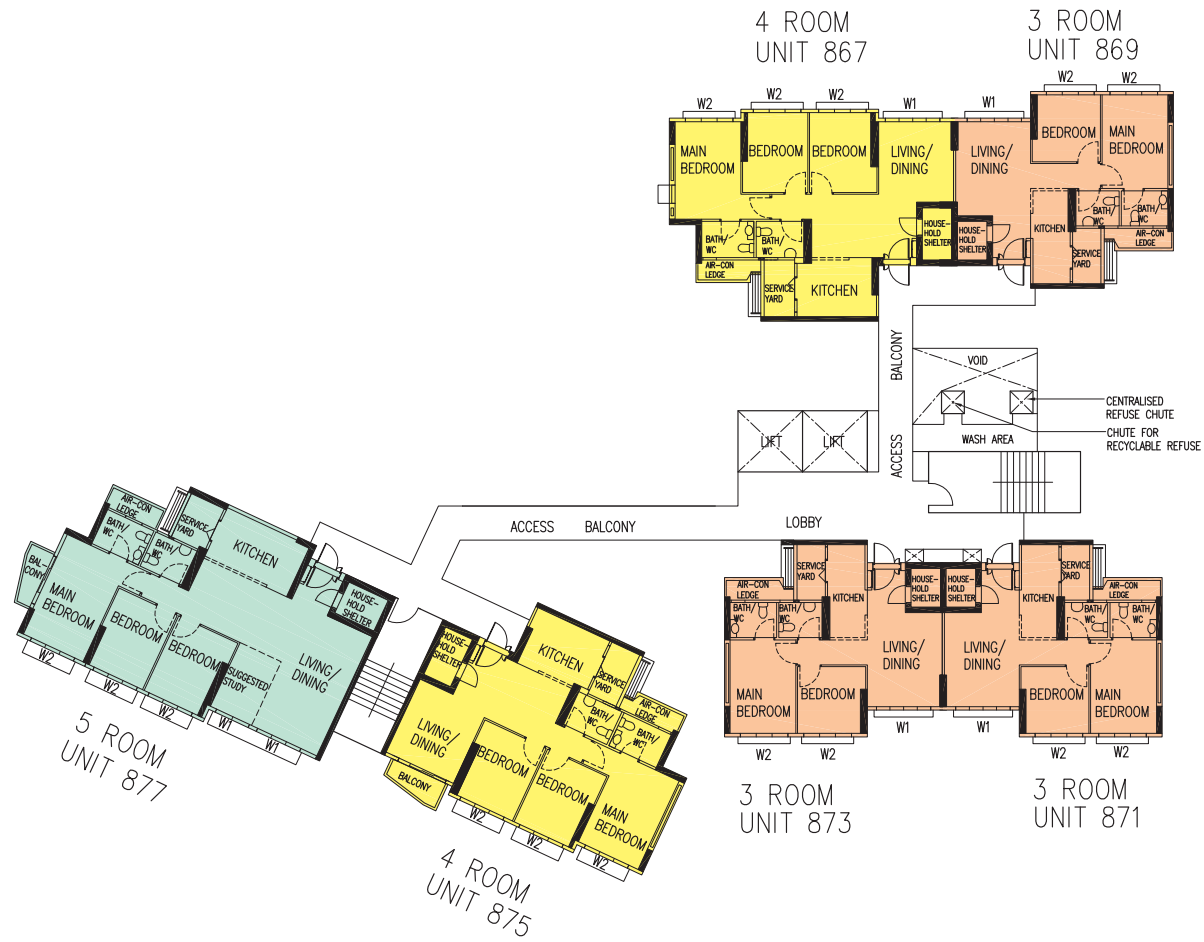
W1 - FULL HEIGHT WINDOW (APPROX. 300mm HIGH PARAPET WALL)

W2 - THREE QUARTER HEIGHT WINDOW (APPROX. 550mm HIGH PARAPET WALL)

CW - THREE QUARTER HEIGHT CORNER WINDOW (APPROX. 550mm HIGH PARAPET WALL)

The coloured floor plan is not intended to demarcate the boundary of the flat.





BLK 322C

(10TH TO 14TH STOREY FLOOR PLAN)

LEGEND:
UNLESS OTHERWISE INDICATED ALL WINDOWS
WILL BE STANDARD HEIGHT WINDOWS

3 ROOM

4 ROOM

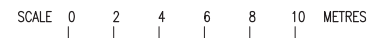
5 ROOM

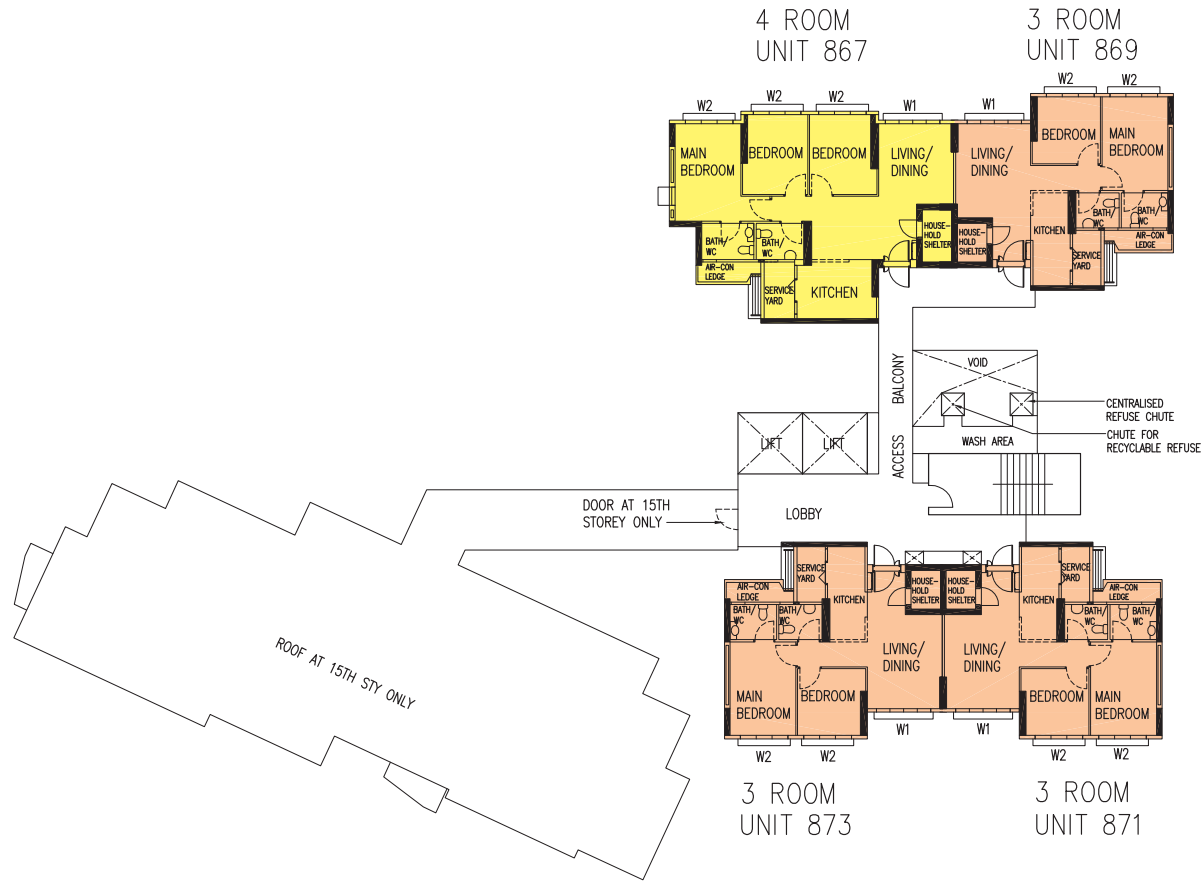
W1 - FULL HEIGHT WINDOW (APPROX. 300mm HIGH PARAPET WALL)

W2 - THREE QUARTER HEIGHT WINDOW (APPROX. 550mm HIGH PARAPET WALL)

CW - THREE QUARTER HEIGHT CORNER WINDOW (APPROX. 550mm HIGH PARAPET WALL)

The coloured floor plan is not intended to demarcate the boundary of the flat.





BLK 322C
(15TH TO 18TH STOREY FLOOR PLAN)

LEGEND:
UNLESS OTHERWISE INDICATED ALL WINDOWS
WILL BE STANDARD HEIGHT WINDOWS

3 ROOM

4 ROOM

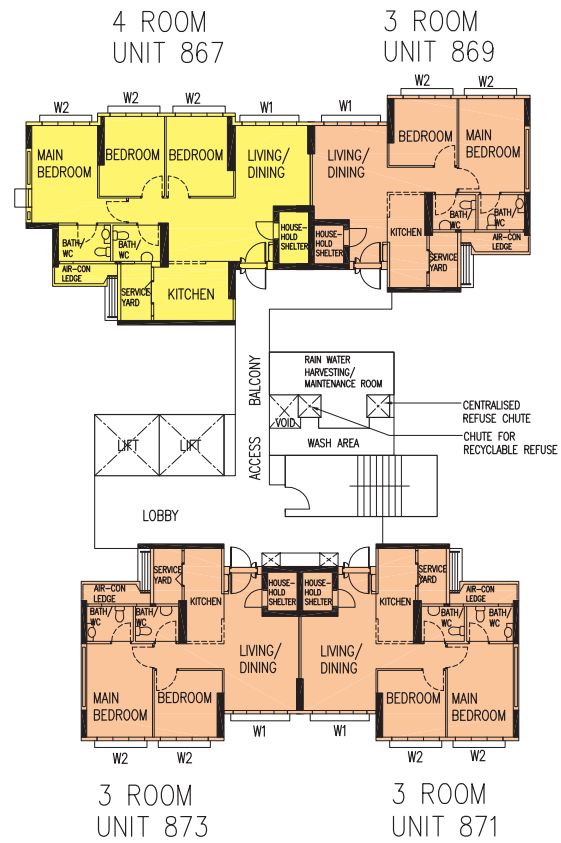
W1 - FULL HEIGHT WINDOW (APPROX. 300mm HIGH PARAPET WALL)

W2 - THREE QUARTER HEIGHT WINDOW (APPROX. 550mm HIGH PARAPET WALL)

CW - THREE QUARTER HEIGHT CORNER WINDOW (APPROX. 550mm HIGH PARAPET WALL)

The coloured floor plan is not intended to demarcate the boundary of the flat.

SCALE 0 2 4 6 8 10 METRES



BLK 322C
(19TH STOREY FLOOR PLAN)

LEGEND:
UNLESS OTHERWISE INDICATED ALL WINDOWS
WILL BE STANDARD HEIGHT WINDOWS

3 ROOM

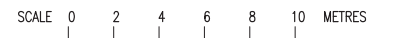
4 ROOM

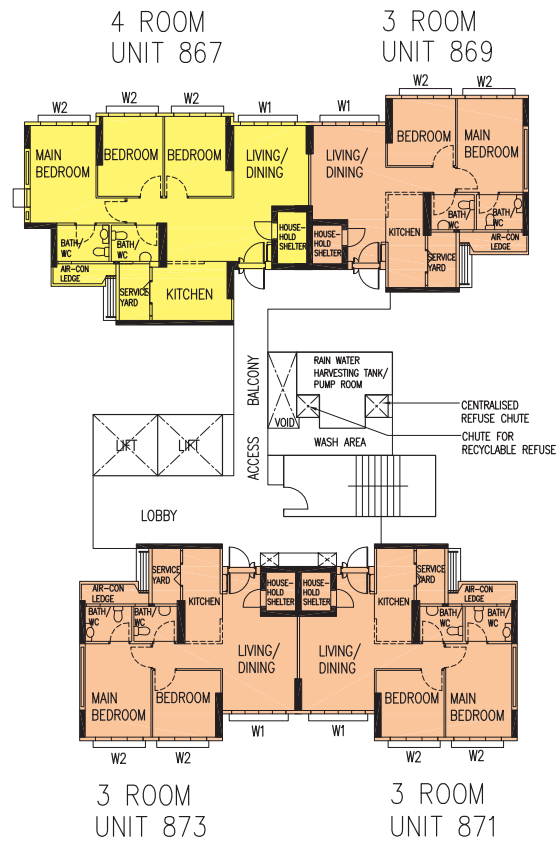
W1 - FULL HEIGHT WINDOW (APPROX. 300mm HIGH PARAPET WALL)

W2 - THREE QUARTER HEIGHT WINDOW (APPROX. 550mm HIGH PARAPET WALL)

CW - THREE QUARTER HEIGHT CORNER WINDOW (APPROX. 550mm HIGH PARAPET WALL)

The coloured floor plan is not intended to demarcate the boundary of the flat.





BLK 322C

(20TH STOREY FLOOR PLAN)

LEGEND:
UNLESS OTHERWISE INDICATED ALL WINDOWS
WILL BE STANDARD HEIGHT WINDOWS

3 ROOM

4 ROOM

W1 - FULL HEIGHT WINDOW (APPROX. 300mm HIGH PARAPET WALL)

W2 - THREE QUARTER HEIGHT WINDOW (APPROX. 550mm HIGH PARAPET WALL)

CW - THREE QUARTER HEIGHT CORNER WINDOW (APPROX. 550mm HIGH PARAPET WALL)

The coloured floor plan is not intended to demarcate the boundary of the flat.

SCALE 0 2 4 6 8 10 METRES



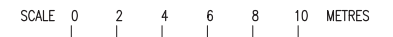
BLK 322D
(2ND TO 10TH STOREY FLOOR PLAN)

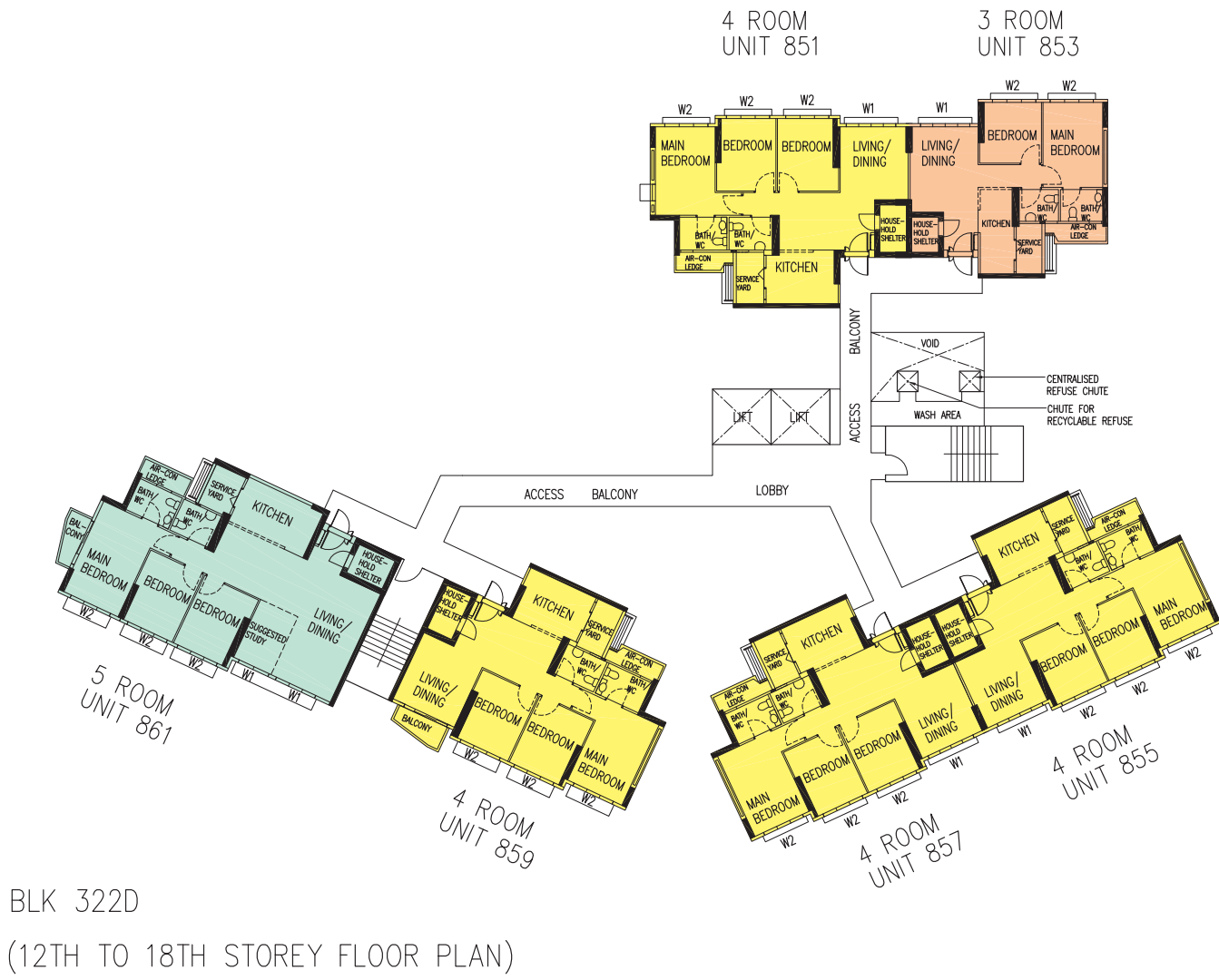
LEGEND:
UNLESS OTHERWISE INDICATED ALL WINDOWS
WILL BE STANDARD HEIGHT WINDOWS

- 3 ROOM
- 4 ROOM
- 5 ROOM

- W1 - FULL HEIGHT WINDOW (APPROX. 300mm HIGH PARAPET WALL)
- W2 - THREE QUARTER HEIGHT WINDOW (APPROX. 550mm HIGH PARAPET WALL)
- CW - THREE QUARTER HEIGHT CORNER WINDOW (APPROX. 550mm HIGH PARAPET WALL)

The coloured floor plan is not intended to demarcate the boundary of the flat.

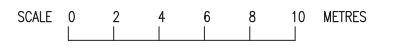




BLK 322D
(12TH TO 18TH STOREY FLOOR PLAN)

- LEGEND:
UNLESS OTHERWISE INDICATED ALL WINDOWS WILL BE STANDARD HEIGHT WINDOWS
- 3 ROOM
 - 4 ROOM
 - 5 ROOM
- W1 - FULL HEIGHT WINDOW (APPROX. 300mm HIGH PARAPET WALL)
 - W2 - THREE QUARTER HEIGHT WINDOW (APPROX. 550mm HIGH PARAPET WALL)
 - CW - THREE QUARTER HEIGHT CORNER WINDOW (APPROX. 550mm HIGH PARAPET WALL)

The coloured floor plan is not intended to demarcate the boundary of the flat.

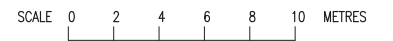


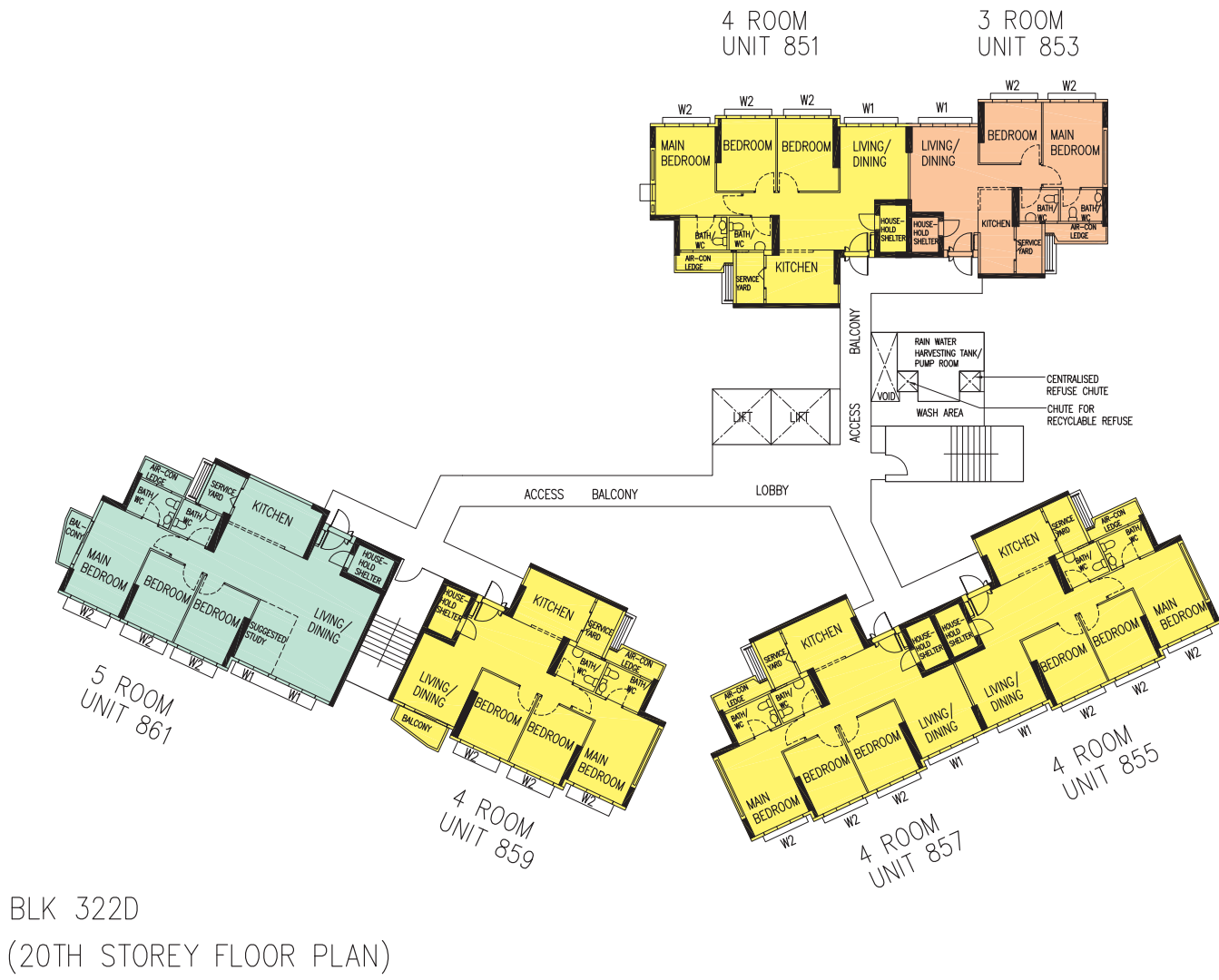


BLK 322D
(19TH STOREY FLOOR PLAN)

- LEGEND:
UNLESS OTHERWISE INDICATED ALL WINDOWS WILL BE STANDARD HEIGHT WINDOWS
- 3 ROOM
 - 4 ROOM
 - 5 ROOM
 - W1 - FULL HEIGHT WINDOW (APPROX. 300mm HIGH PARAPET WALL)
 - W2 - THREE QUARTER HEIGHT WINDOW (APPROX. 550mm HIGH PARAPET WALL)
 - CW - THREE QUARTER HEIGHT CORNER WINDOW (APPROX. 550mm HIGH PARAPET WALL)

The coloured floor plan is not intended to demarcate the boundary of the flat.

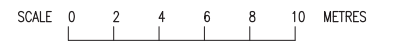


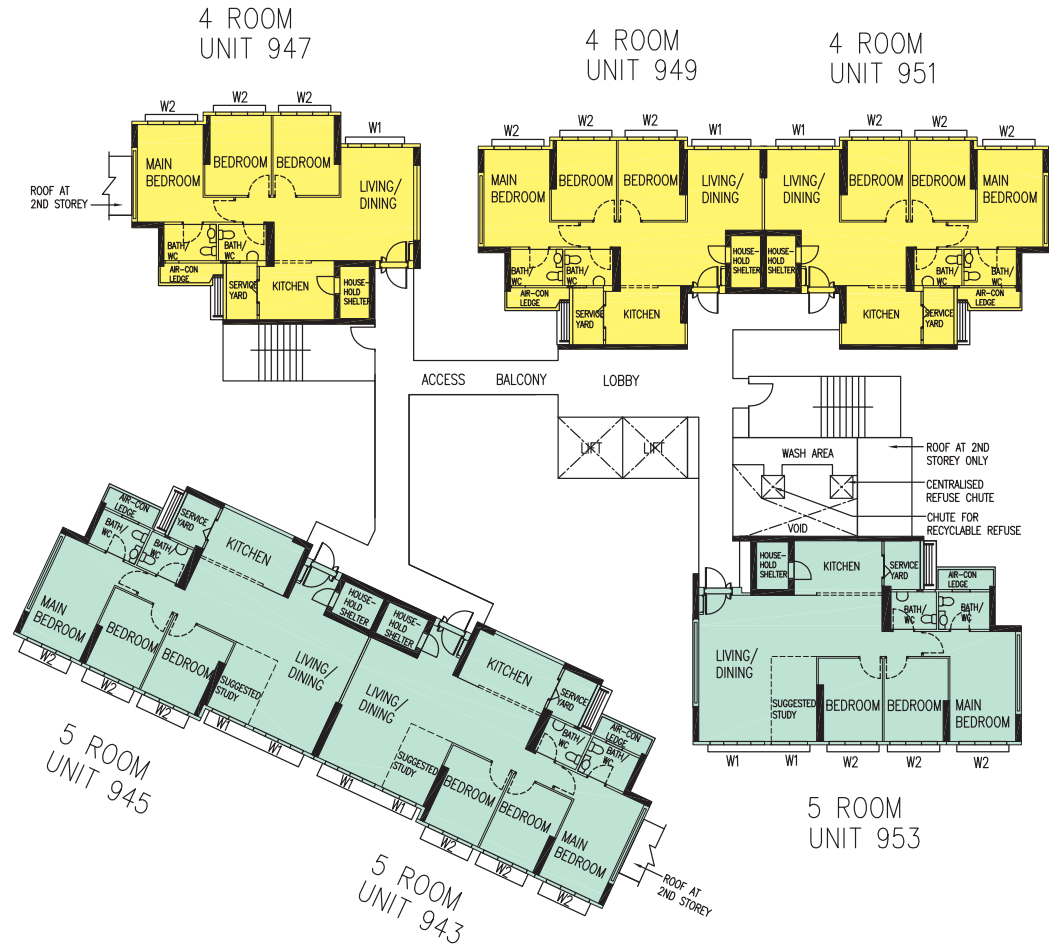


BLK 322
(20TH STOREY FLOOR PLAN)

- LEGEND:
UNLESS OTHERWISE INDICATED ALL WINDOWS WILL BE STANDARD HEIGHT WINDOWS
- 3 ROOM
 - 4 ROOM
 - 5 ROOM
- W1 - FULL HEIGHT WINDOW (APPROX. 300mm HIGH PARAPET WALL)
W2 - THREE QUARTER HEIGHT WINDOW (APPROX. 550mm HIGH PARAPET WALL)
CW - THREE QUARTER HEIGHT CORNER WINDOW (APPROX. 550mm HIGH PARAPET WALL)

The coloured floor plan is not intended to demarcate the boundary of the flat.





BLK 323A
(2ND TO 20TH STOREY FLOOR PLAN)

LEGEND:
UNLESS OTHERWISE INDICATED ALL WINDOWS
WILL BE STANDARD HEIGHT WINDOWS

4 ROOM

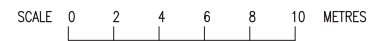
5 ROOM

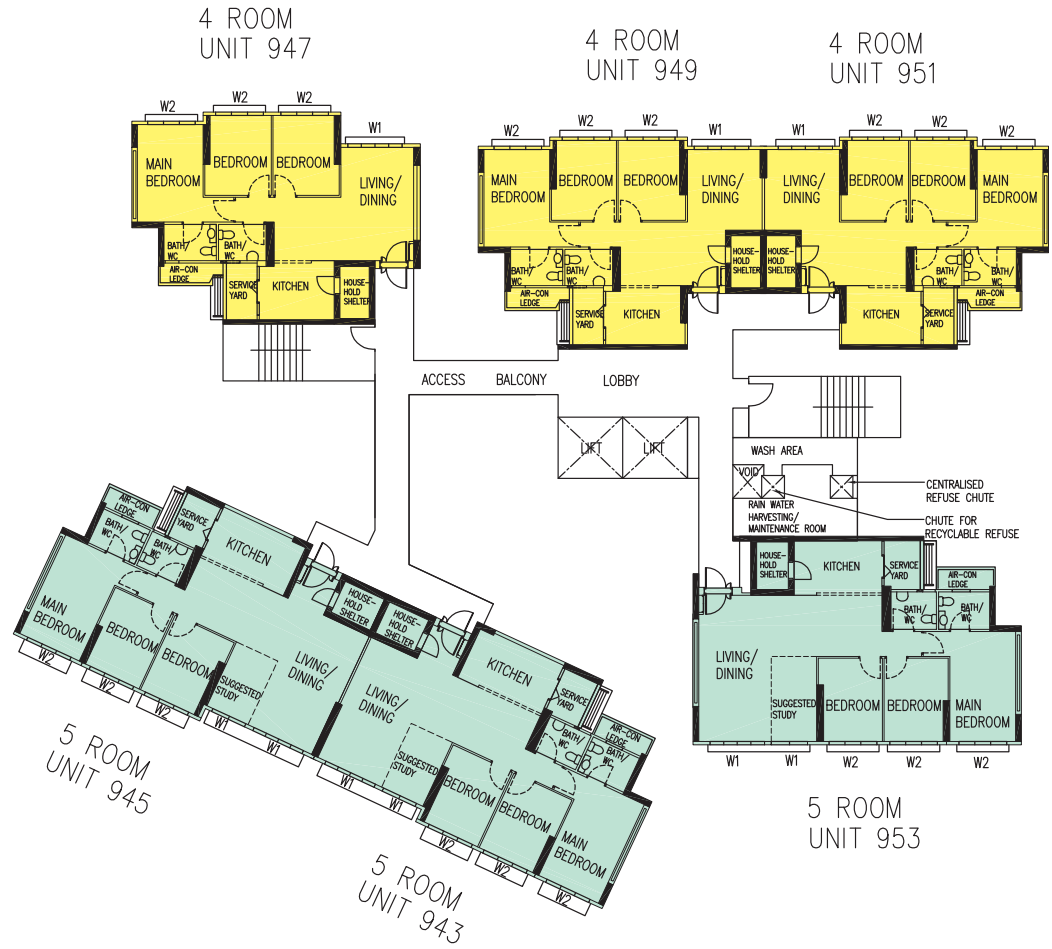
W1 - FULL HEIGHT WINDOW (APPROX. 300mm HIGH PARAPET WALL)

W2 - THREE QUARTER HEIGHT WINDOW (APPROX. 550mm HIGH PARAPET WALL)

CW - THREE QUARTER HEIGHT CORNER WINDOW (APPROX. 550mm HIGH PARAPET WALL)

The coloured floor plan is not intended to demarcate the boundary of the flat.





BLK 323A
(21ST STOREY FLOOR PLAN)

LEGEND:
UNLESS OTHERWISE INDICATED ALL WINDOWS
WILL BE STANDARD HEIGHT WINDOWS

4 ROOM

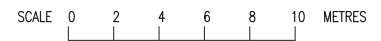
5 ROOM

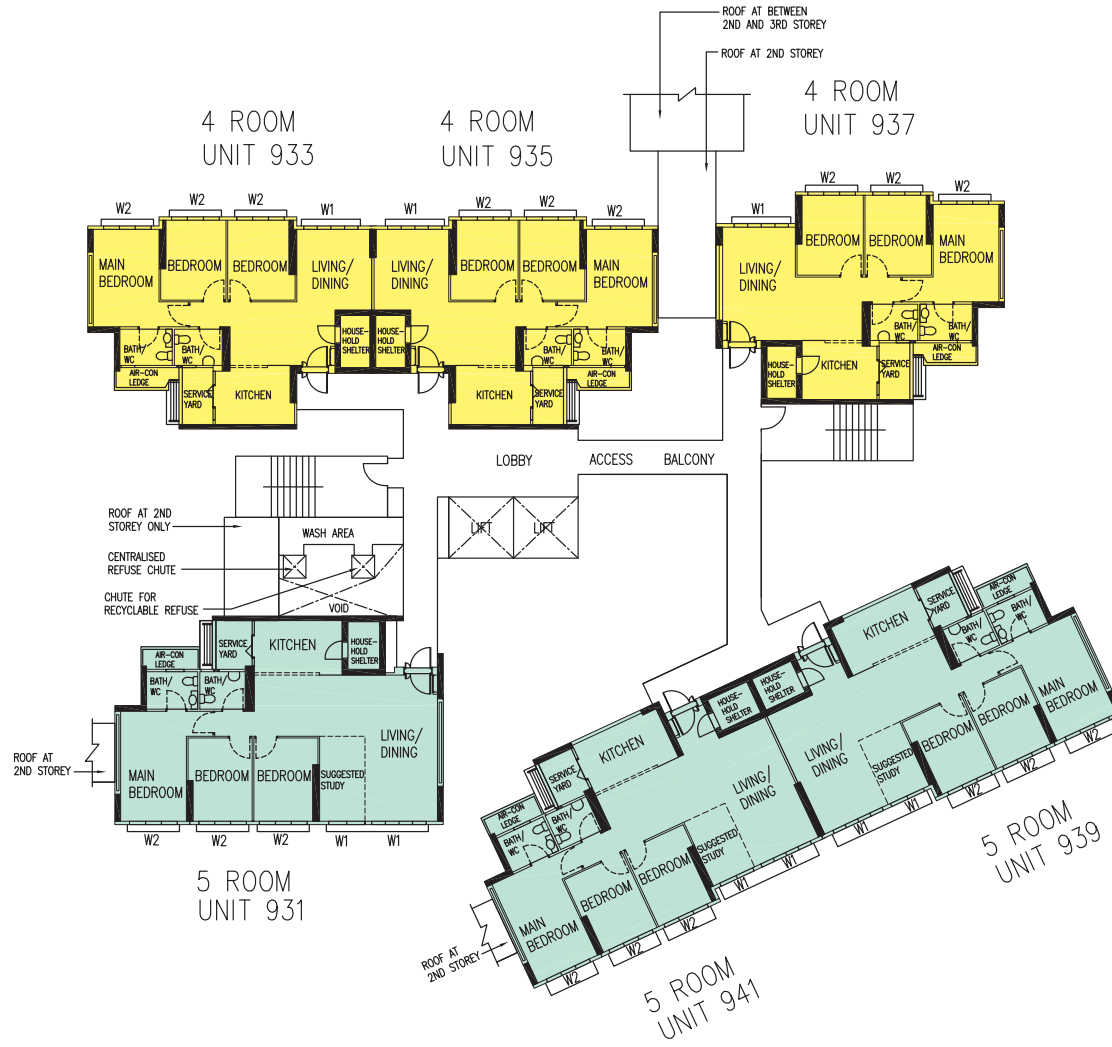
W1 - FULL HEIGHT WINDOW (APPROX. 300mm HIGH PARAPET WALL)

W2 - THREE QUARTER HEIGHT WINDOW (APPROX. 550mm HIGH PARAPET WALL)

CW - THREE QUARTER HEIGHT CORNER WINDOW (APPROX. 550mm HIGH PARAPET WALL)

The coloured floor plan is not intended to demarcate the boundary of the flat.





BLK 323B
(2ND TO 20TH STOREY FLOOR PLAN)

LEGEND:
UNLESS OTHERWISE INDICATED ALL WINDOWS
WILL BE STANDARD HEIGHT WINDOWS

4 ROOM

5 ROOM

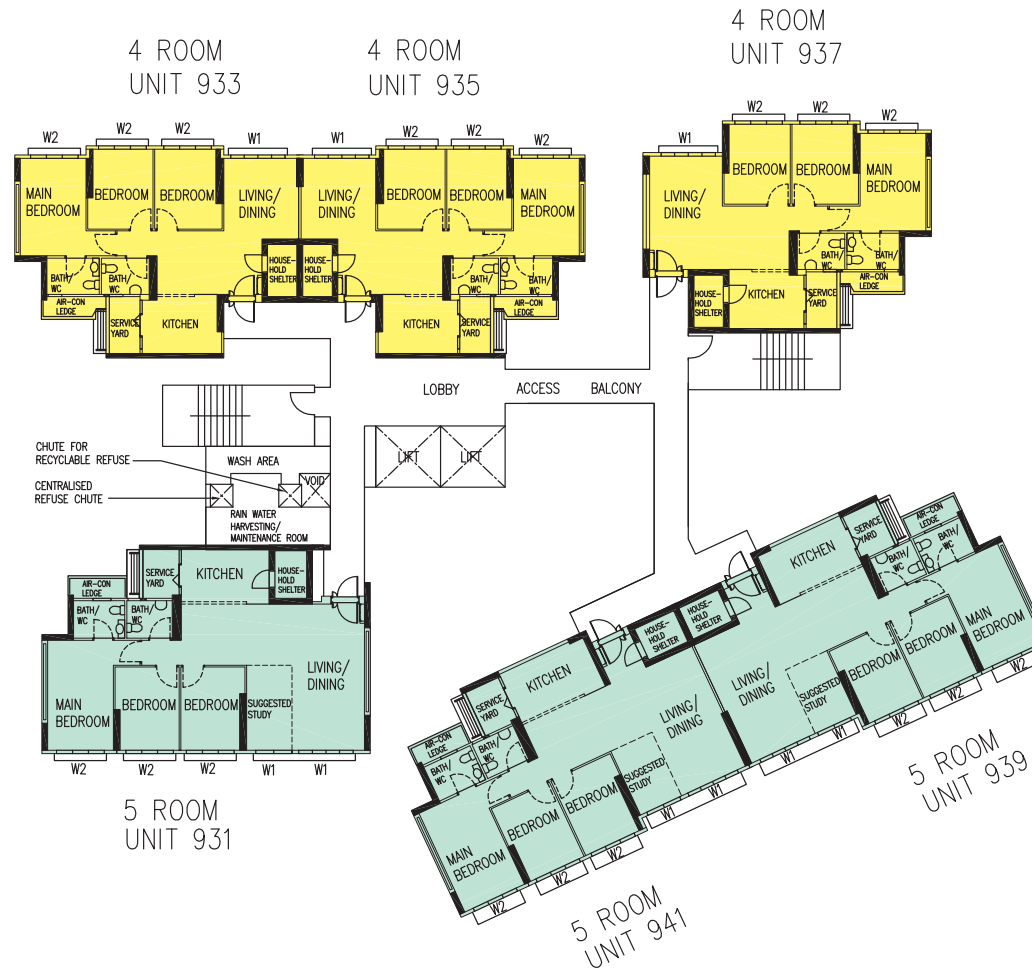
W1 - FULL HEIGHT WINDOW (APPROX. 300mm HIGH PARAPET WALL)

W2 - THREE QUARTER HEIGHT WINDOW (APPROX. 550mm HIGH PARAPET WALL)

CW - THREE QUARTER HEIGHT CORNER WINDOW (APPROX. 550mm HIGH PARAPET WALL)

The coloured floor plan is not intended to demarcate the boundary of the flat.

SCALE 0 2 4 6 8 10 METRES



BLK 323B
(21ST STOREY FLOOR PLAN)

LEGEND:
UNLESS OTHERWISE INDICATED ALL WINDOWS
WILL BE STANDARD HEIGHT WINDOWS

4 ROOM

5 ROOM

W1 - FULL HEIGHT WINDOW (APPROX. 300mm HIGH PARAPET WALL)

W2 - THREE QUARTER HEIGHT WINDOW (APPROX. 550mm HIGH PARAPET WALL)

CW - THREE QUARTER HEIGHT CORNER WINDOW (APPROX. 550mm HIGH PARAPET WALL)

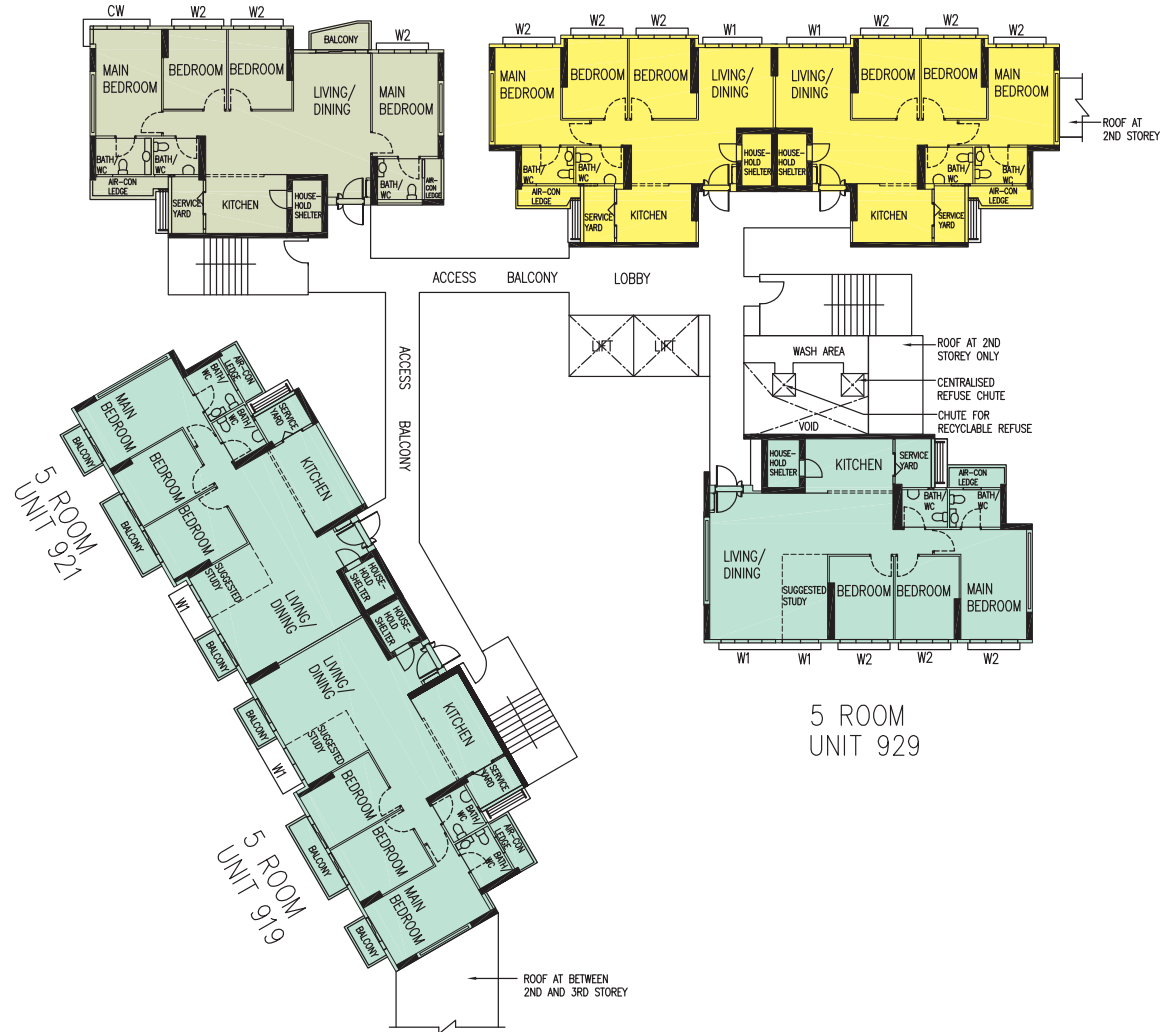
The coloured floor plan is not intended to demarcate the boundary of the flat.

SCALE 0 2 4 6 8 10 METRES

3GEN FLAT
UNIT 923

4 ROOM
UNIT 925

4 ROOM
UNIT 927



41

LEGEND:
UNLESS OTHERWISE INDICATED ALL WINDOWS
WILL BE STANDARD HEIGHT WINDOWS

4 ROOM

5 ROOM

3Gen

W1 - FULL HEIGHT WINDOW (APPROX. 300mm HIGH PARAPET WALL)

W2 - THREE QUARTER HEIGHT WINDOW (APPROX. 550mm HIGH PARAPET WALL)

CW - THREE QUARTER HEIGHT CORNER WINDOW (APPROX. 550mm HIGH PARAPET WALL)

BLK 323C
(2ND TO 6TH STOREY FLOOR PLAN)

The coloured floor plan is not intended to demarcate the boundary of the flat.

SCALE 0 2 4 6 8 10 METRES



BLK 323C
(7TH & 8TH STOREY FLOOR PLAN)

LEGEND:
UNLESS OTHERWISE INDICATED ALL WINDOWS
WILL BE STANDARD HEIGHT WINDOWS

4 ROOM

5 ROOM

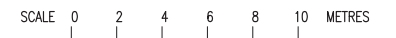
3Gen

W1 - FULL HEIGHT WINDOW (APPROX. 300mm HIGH PARAPET WALL)

W2 - THREE QUARTER HEIGHT WINDOW (APPROX. 550mm HIGH PARAPET WALL)

CW - THREE QUARTER HEIGHT CORNER WINDOW (APPROX. 550mm HIGH PARAPET WALL)

The coloured floor plan is not intended to demarcate the boundary of the flat.

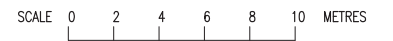


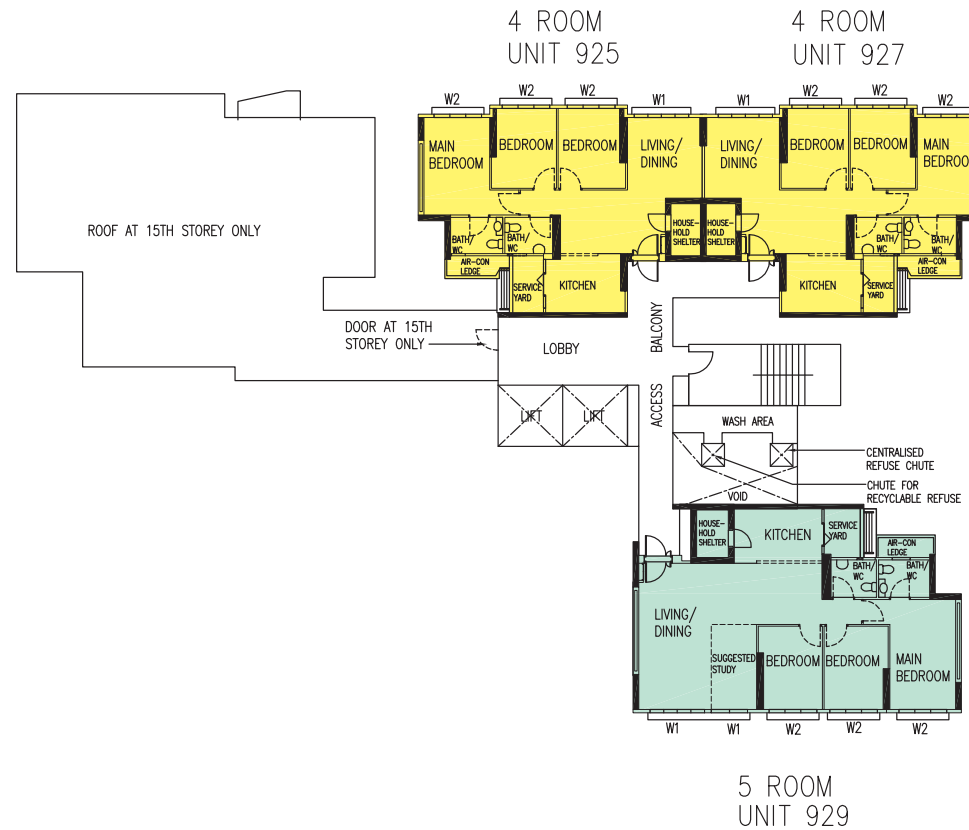


BLK 323C
(9TH TO 14TH STOREY FLOOR PLAN)

- LEGEND:
UNLESS OTHERWISE INDICATED ALL WINDOWS
WILL BE STANDARD HEIGHT WINDOWS
- 4 ROOM
 - 5 ROOM
 - 3Gen
 - W1 - FULL HEIGHT WINDOW (APPROX. 300mm HIGH PARAPET WALL)
 - W2 - THREE QUARTER HEIGHT WINDOW (APPROX. 550mm HIGH PARAPET WALL)
 - CW - THREE QUARTER HEIGHT CORNER WINDOW (APPROX. 550mm HIGH PARAPET WALL)

The coloured floor plan is not intended to demarcate the boundary of the flat.





BLK 323C
(15TH STOREY FLOOR PLAN)

LEGEND:
UNLESS OTHERWISE INDICATED ALL WINDOWS
WILL BE STANDARD HEIGHT WINDOWS

4 ROOM

5 ROOM

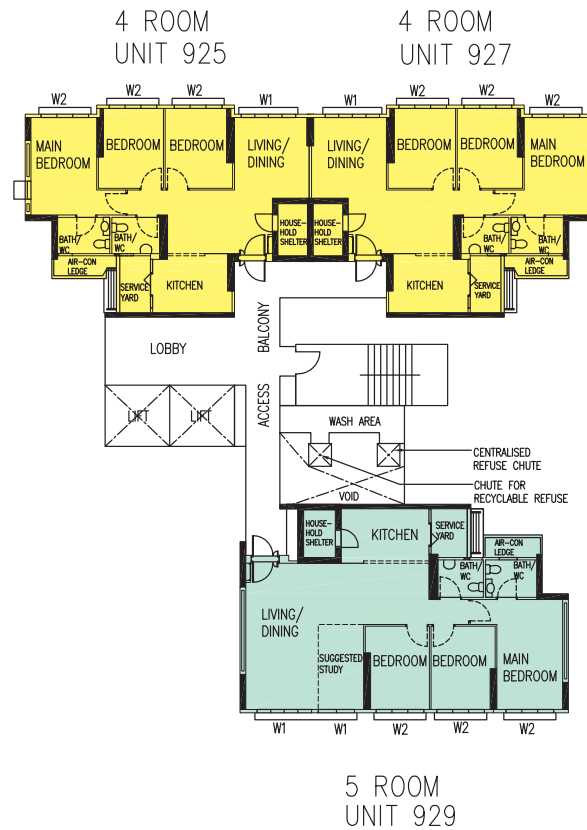
W1 - FULL HEIGHT WINDOW (APPROX. 300mm HIGH PARAPET WALL)

W2 - THREE QUARTER HEIGHT WINDOW (APPROX. 550mm HIGH PARAPET WALL)

CW - THREE QUARTER HEIGHT CORNER WINDOW (APPROX. 550mm HIGH PARAPET WALL)

The coloured floor plan is not intended to demarcate the boundary of the flat.

SCALE 0 2 4 6 8 10 METRES



LEGEND:
UNLESS OTHERWISE INDICATED ALL WINDOWS
WILL BE STANDARD HEIGHT WINDOWS

4 ROOM

5 ROOM

W1 - FULL HEIGHT WINDOW (APPROX. 300mm HIGH PARAPET WALL)

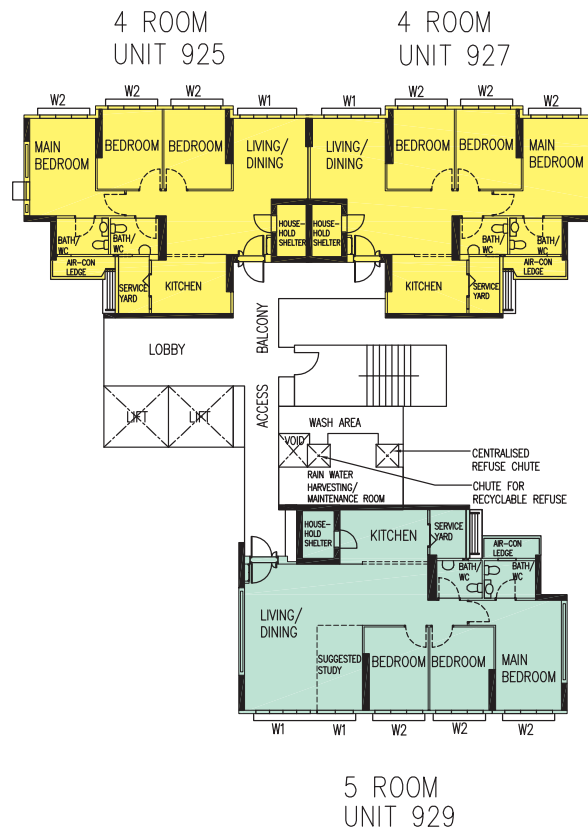
W2 - THREE QUARTER HEIGHT WINDOW (APPROX. 550mm HIGH PARAPET WALL)

CW - THREE QUARTER HEIGHT CORNER WINDOW (APPROX. 550mm HIGH PARAPET WALL)

The coloured floor plan is not intended to demarcate the boundary of the flat.

BLK 323C
(16TH TO 20TH STOREY FLOOR PLAN)

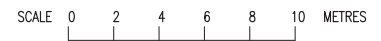
SCALE 0 2 4 6 8 10 METRES

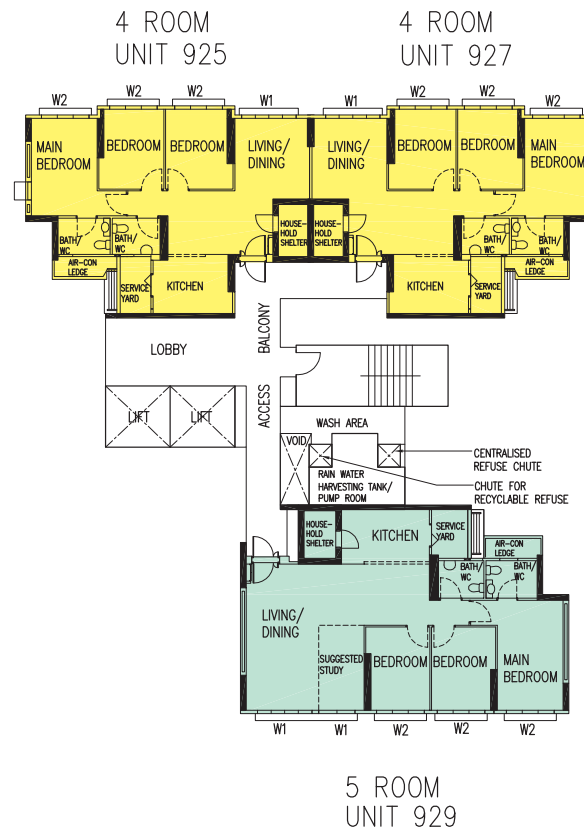


BLK 323C
(21ST STOREY FLOOR PLAN)

- LEGEND:
UNLESS OTHERWISE INDICATED ALL WINDOWS WILL BE STANDARD HEIGHT WINDOWS
- 4 ROOM
 - 5 ROOM
 - W1 - FULL HEIGHT WINDOW (APPROX. 300mm HIGH PARAPET WALL)
 - W2 - THREE QUARTER HEIGHT WINDOW (APPROX. 550mm HIGH PARAPET WALL)
 - CW - THREE QUARTER HEIGHT CORNER WINDOW (APPROX. 550mm HIGH PARAPET WALL)

The coloured floor plan is not intended to demarcate the boundary of the flat.

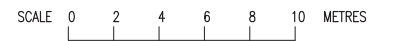




BLK 323C
(22ND STOREY FLOOR PLAN)

- LEGEND:
UNLESS OTHERWISE INDICATED ALL WINDOWS
WILL BE STANDARD HEIGHT WINDOWS
- 4 ROOM
 - 5 ROOM
 - W1 - FULL HEIGHT WINDOW (APPROX. 300mm HIGH PARAPET WALL)
 - W2 - THREE QUARTER HEIGHT WINDOW (APPROX. 550mm HIGH PARAPET WALL)
 - CW - THREE QUARTER HEIGHT CORNER WINDOW (APPROX. 550mm HIGH PARAPET WALL)

The coloured floor plan is not intended to demarcate the boundary of the flat.





BLK 323D
(2ND TO 6TH STOREY FLOOR PLAN)

LEGEND:
UNLESS OTHERWISE INDICATED ALL WINDOWS
WILL BE STANDARD HEIGHT WINDOWS

4 ROOM

5 ROOM

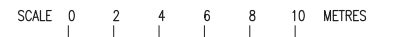
3Gen

W1 - FULL HEIGHT WINDOW (APPROX. 300mm HIGH PARAPET WALL)

W2 - THREE QUARTER HEIGHT WINDOW (APPROX. 550mm HIGH PARAPET WALL)

CW - THREE QUARTER HEIGHT CORNER WINDOW (APPROX. 550mm HIGH PARAPET WALL)

The coloured floor plan is not intended to demarcate the boundary of the flat.

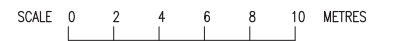


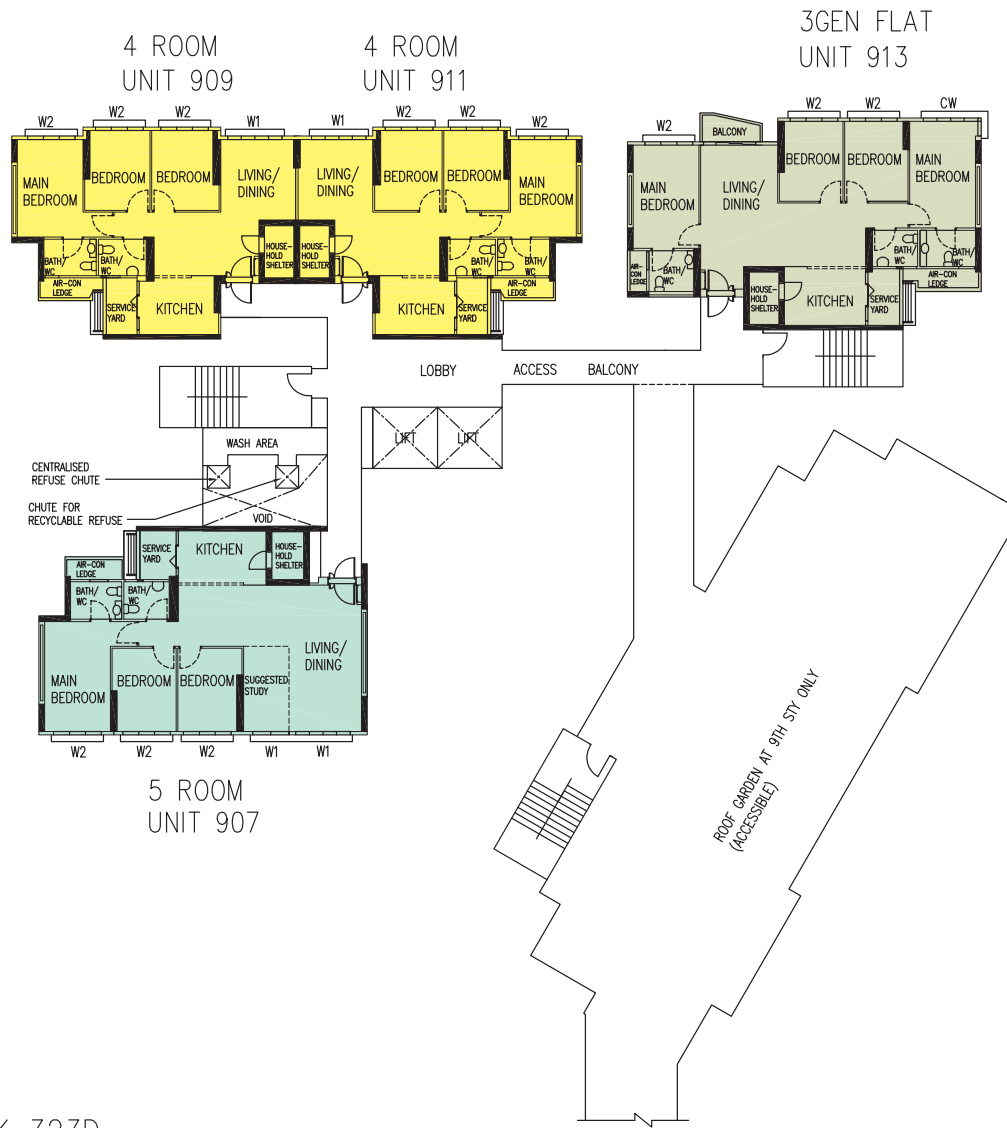


BLK 323D
(7TH & 8TH STOREY FLOOR PLAN)

- LEGEND:
UNLESS OTHERWISE INDICATED ALL WINDOWS
WILL BE STANDARD HEIGHT WINDOWS
- 4 ROOM
 - 5 ROOM
 - 3Gen
- W1 - FULL HEIGHT WINDOW (APPROX. 300mm HIGH PARAPET WALL)
 - W2 - THREE QUARTER HEIGHT WINDOW (APPROX. 550mm HIGH PARAPET WALL)
 - CW - THREE QUARTER HEIGHT CORNER WINDOW (APPROX. 550mm HIGH PARAPET WALL)

The coloured floor plan is not intended to demarcate the boundary of the flat.





BLK 323D
(9TH TO 14TH STOREY FLOOR PLAN)

LEGEND:
UNLESS OTHERWISE INDICATED ALL WINDOWS
WILL BE STANDARD HEIGHT WINDOWS

4 ROOM

5 ROOM

3Gen

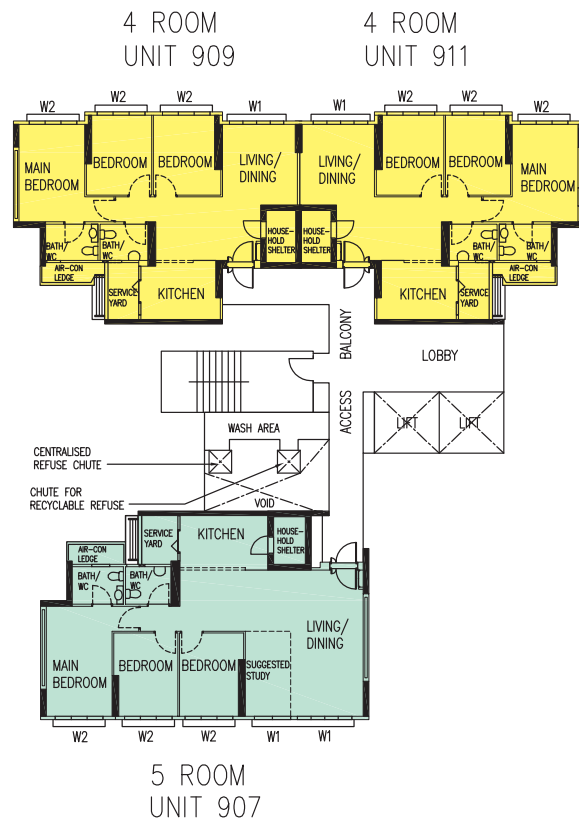
W1 - FULL HEIGHT WINDOW (APPROX. 300mm HIGH PARAPET WALL)

W2 - THREE QUARTER HEIGHT WINDOW (APPROX. 550mm HIGH PARAPET WALL)

CW - THREE QUARTER HEIGHT CORNER WINDOW (APPROX. 550mm HIGH PARAPET WALL)

The coloured floor plan is not intended to demarcate the boundary of the flat.

SCALE 0 2 4 6 8 10 METRES



BLK 323D
(16TH TO 20TH STOREY FLOOR PLAN)

LEGEND:
UNLESS OTHERWISE INDICATED ALL WINDOWS
WILL BE STANDARD HEIGHT WINDOWS

4 ROOM

5 ROOM

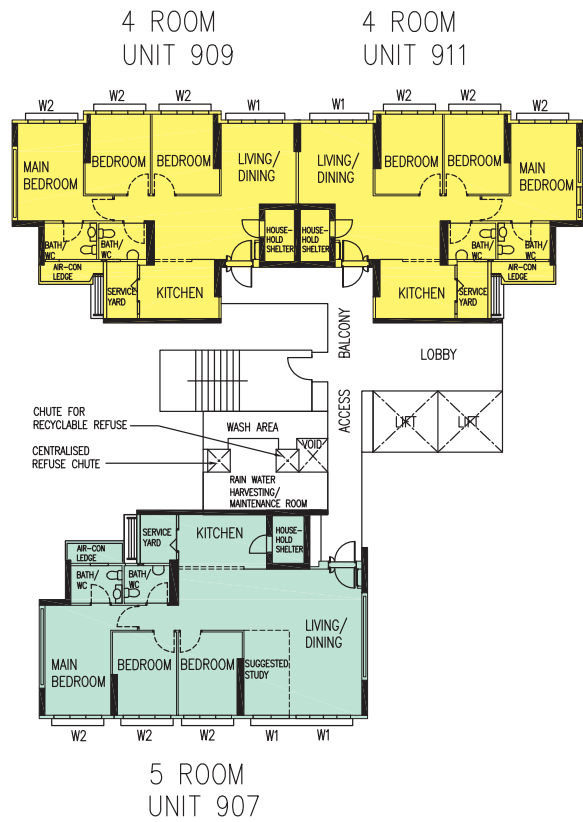
W1 - FULL HEIGHT WINDOW (APPROX. 300mm HIGH PARAPET WALL)

W2 - THREE QUARTER HEIGHT WINDOW (APPROX. 550mm HIGH PARAPET WALL)

CW - THREE QUARTER HEIGHT CORNER WINDOW (APPROX. 550mm HIGH PARAPET WALL)

The coloured floor plan is not intended to demarcate the boundary of the flat.

SCALE 0 2 4 6 8 10 METRES



BLK 323D
(21ST STOREY FLOOR PLAN)

LEGEND:
UNLESS OTHERWISE INDICATED ALL WINDOWS
WILL BE STANDARD HEIGHT WINDOWS

4 ROOM

5 ROOM

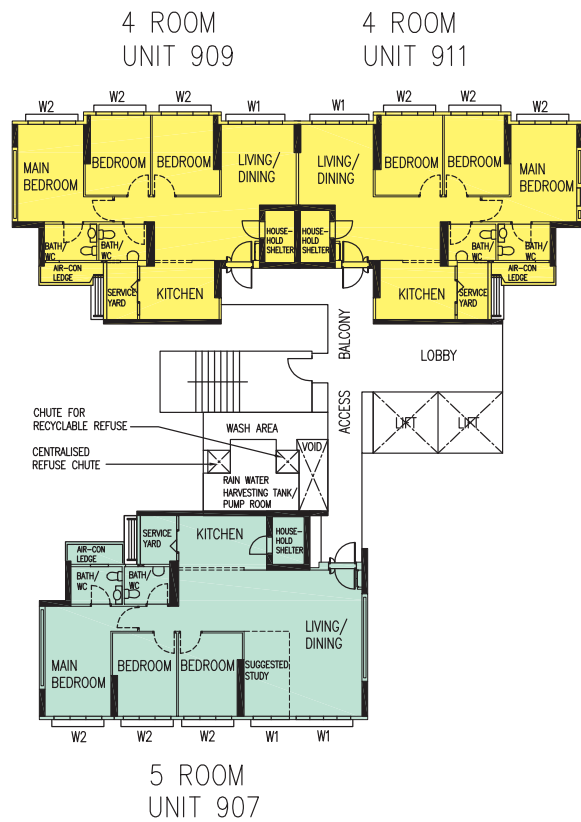
W1 - FULL HEIGHT WINDOW (APPROX. 300mm HIGH PARAPET WALL)

W2 - THREE QUARTER HEIGHT WINDOW (APPROX. 550mm HIGH PARAPET WALL)

CW - THREE QUARTER HEIGHT CORNER WINDOW (APPROX. 550mm HIGH PARAPET WALL)

The coloured floor plan is not intended to demarcate the boundary of the flat.

SCALE 0 2 4 6 8 10 METRES



BLK 323D
(22ND STOREY FLOOR PLAN)

LEGEND:
UNLESS OTHERWISE INDICATED ALL WINDOWS
WILL BE STANDARD HEIGHT WINDOWS

4 ROOM

5 ROOM

W1 - FULL HEIGHT WINDOW (APPROX. 300mm HIGH PARAPET WALL)

W2 - THREE QUARTER HEIGHT WINDOW (APPROX. 550mm HIGH PARAPET WALL)

CW - THREE QUARTER HEIGHT CORNER WINDOW (APPROX. 550mm HIGH PARAPET WALL)

The coloured floor plan is not intended to demarcate the boundary of the flat.

SCALE 0 2 4 6 8 10 METRES



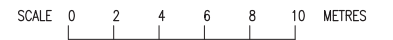
BLK 325A
(2ND TO 8TH STOREY FLOOR PLAN)

LEGEND:
UNLESS OTHERWISE INDICATED ALL WINDOWS
WILL BE STANDARD HEIGHT WINDOWS

- 3 ROOM
- 4 ROOM
- 5 ROOM

- W1 - FULL HEIGHT WINDOW (APPROX. 300mm HIGH PARAPET WALL)
- W2 - THREE QUARTER HEIGHT WINDOW (APPROX. 550mm HIGH PARAPET WALL)
- CW - THREE QUARTER HEIGHT CORNER WINDOW (APPROX. 550mm HIGH PARAPET WALL)

The coloured floor plan is not intended to demarcate the boundary of the flat.





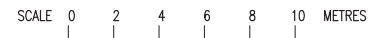
BLK 325A
(9TH STOREY FLOOR PLAN)

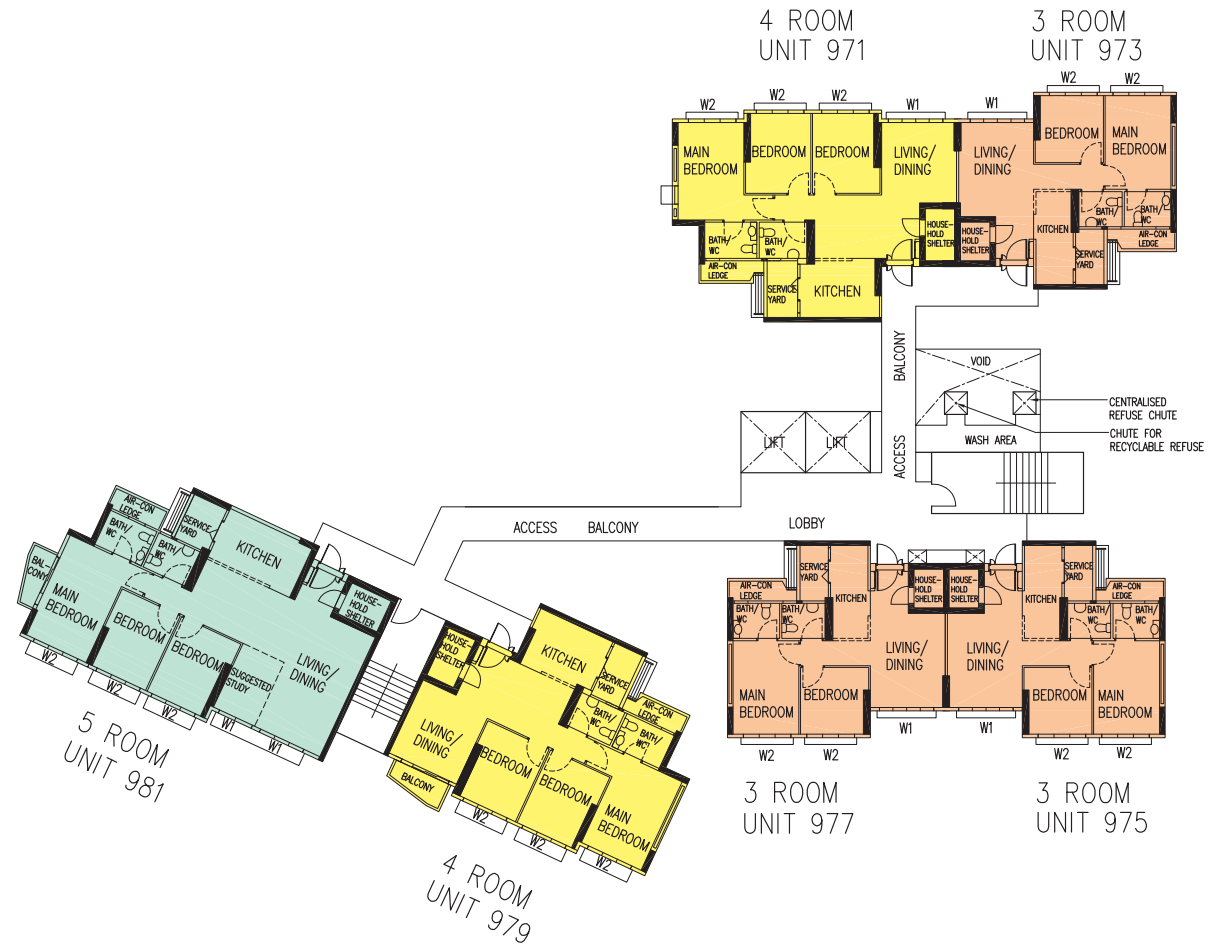
LEGEND:
UNLESS OTHERWISE INDICATED ALL WINDOWS
WILL BE STANDARD HEIGHT WINDOWS

- 3 ROOM
- 4 ROOM
- 5 ROOM

- W1 - FULL HEIGHT WINDOW (APPROX. 300mm HIGH PARAPET WALL)
- W2 - THREE QUARTER HEIGHT WINDOW (APPROX. 550mm HIGH PARAPET WALL)
- CW - THREE QUARTER HEIGHT CORNER WINDOW (APPROX. 550mm HIGH PARAPET WALL)

The coloured floor plan is not intended to demarcate the boundary of the flat.

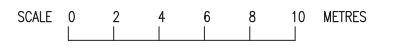


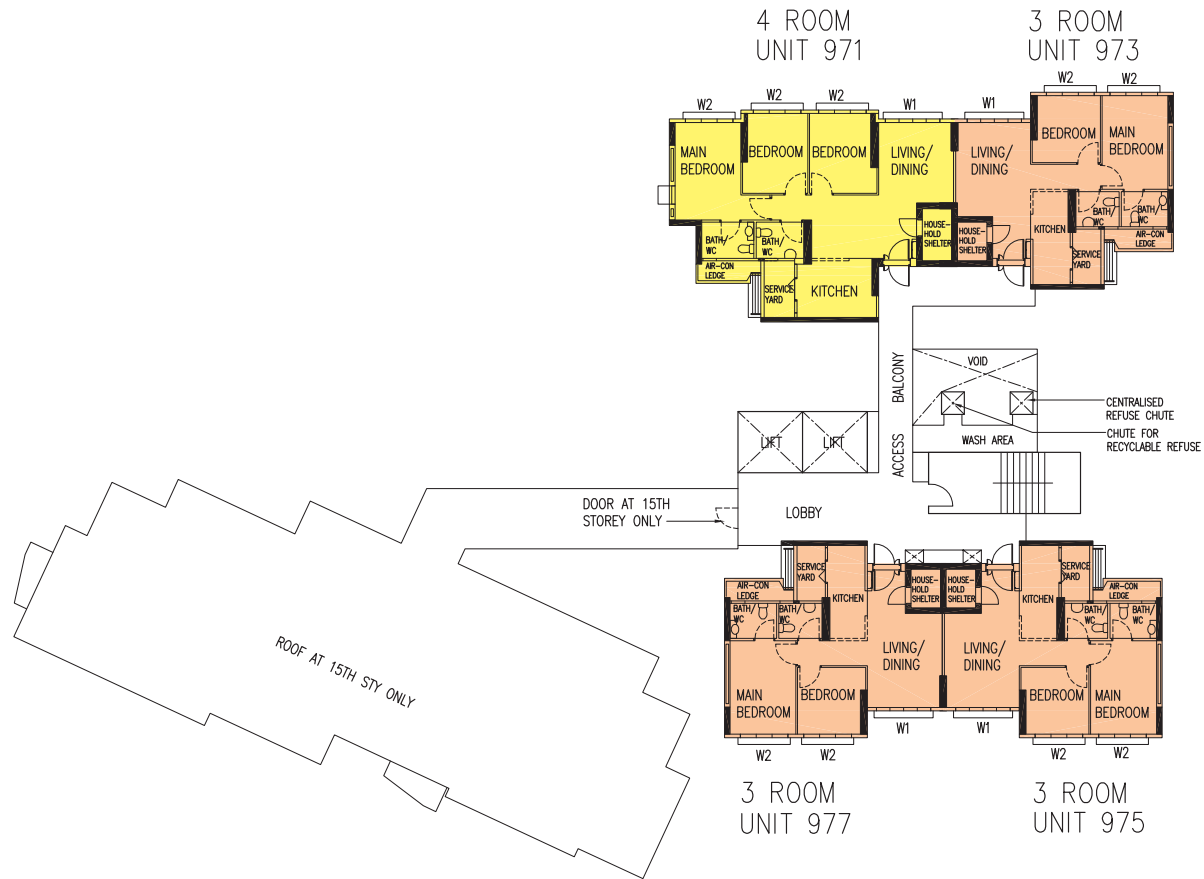


BLK 325A
(10TH TO 14TH STOREY FLOOR PLAN)

- LEGEND:
UNLESS OTHERWISE INDICATED ALL WINDOWS WILL BE STANDARD HEIGHT WINDOWS
- 3 ROOM
 - 4 ROOM
 - 5 ROOM
- W1 - FULL HEIGHT WINDOW (APPROX. 300mm HIGH PARAPET WALL)
W2 - THREE QUARTER HEIGHT WINDOW (APPROX. 550mm HIGH PARAPET WALL)
CW - THREE QUARTER HEIGHT CORNER WINDOW (APPROX. 550mm HIGH PARAPET WALL)

The coloured floor plan is not intended to demarcate the boundary of the flat.





BLK 325A

(15TH TO 20TH STOREY FLOOR PLAN)

LEGEND:
UNLESS OTHERWISE INDICATED ALL WINDOWS
WILL BE STANDARD HEIGHT WINDOWS

3 ROOM

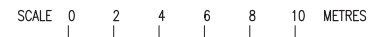
4 ROOM

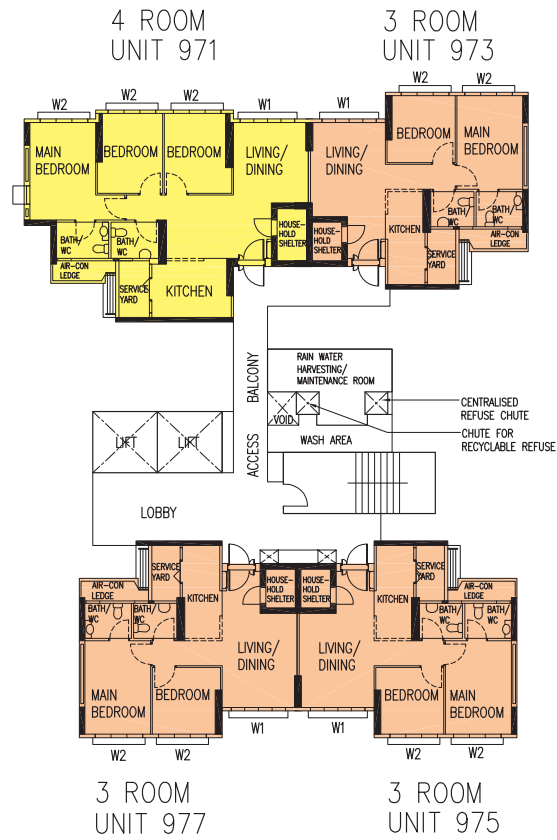
W1 - FULL HEIGHT WINDOW (APPROX. 300mm HIGH PARAPET WALL)

W2 - THREE QUARTER HEIGHT WINDOW (APPROX. 550mm HIGH PARAPET WALL)

CW - THREE QUARTER HEIGHT CORNER WINDOW (APPROX. 550mm HIGH PARAPET WALL)

The coloured floor plan is not intended to demarcate the boundary of the flat.





BLK 325A
(21ST STOREY FLOOR PLAN)

LEGEND:
UNLESS OTHERWISE INDICATED ALL WINDOWS
WILL BE STANDARD HEIGHT WINDOWS

3 ROOM

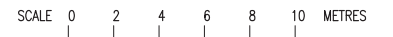
4 ROOM

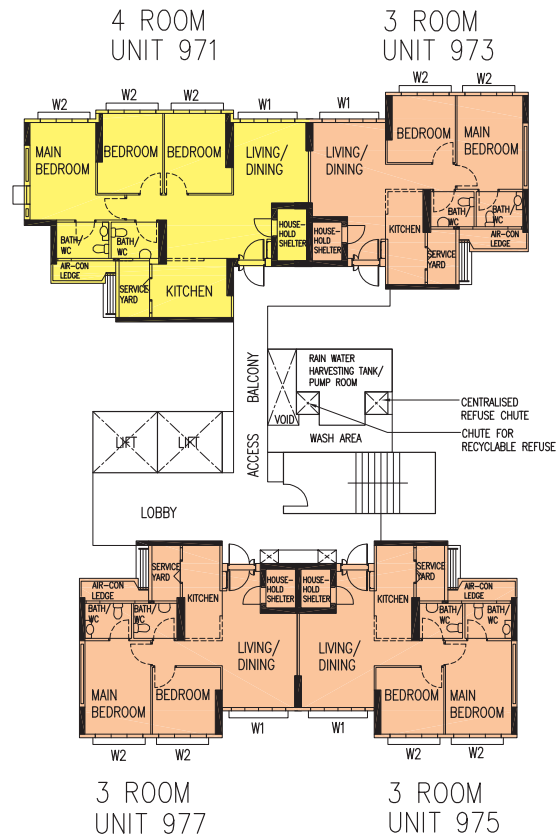
W1 - FULL HEIGHT WINDOW (APPROX. 300mm HIGH PARAPET WALL)

W2 - THREE QUARTER HEIGHT WINDOW (APPROX. 550mm HIGH PARAPET WALL)

CW - THREE QUARTER HEIGHT CORNER WINDOW (APPROX. 550mm HIGH PARAPET WALL)

The coloured floor plan is not intended to demarcate the boundary of the flat.





BLK 325A
(22ND STOREY FLOOR PLAN)

LEGEND:
UNLESS OTHERWISE INDICATED ALL WINDOWS
WILL BE STANDARD HEIGHT WINDOWS

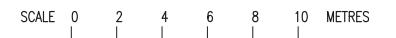
- 3 ROOM
- 4 ROOM

W1 - FULL HEIGHT WINDOW (APPROX. 300mm HIGH PARAPET WALL)

W2 - THREE QUARTER HEIGHT WINDOW (APPROX. 550mm HIGH PARAPET WALL)

CW - THREE QUARTER HEIGHT CORNER WINDOW (APPROX. 550mm HIGH PARAPET WALL)

The coloured floor plan is not intended to demarcate the boundary of the flat.





BLK 325B
(2ND TO 8TH STOREY FLOOR PLAN)

LEGEND:
UNLESS OTHERWISE INDICATED ALL WINDOWS
WILL BE STANDARD HEIGHT WINDOWS

3 ROOM

4 ROOM

5 ROOM

W1 - FULL HEIGHT WINDOW (APPROX. 300mm HIGH PARAPET WALL)

W2 - THREE QUARTER HEIGHT WINDOW (APPROX. 550mm HIGH PARAPET WALL)

CW - THREE QUARTER HEIGHT CORNER WINDOW (APPROX. 550mm HIGH PARAPET WALL)

The coloured floor plan is not intended to demarcate the boundary of the flat.

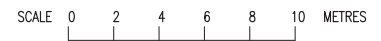
SCALE 0 2 4 6 8 10 METRES

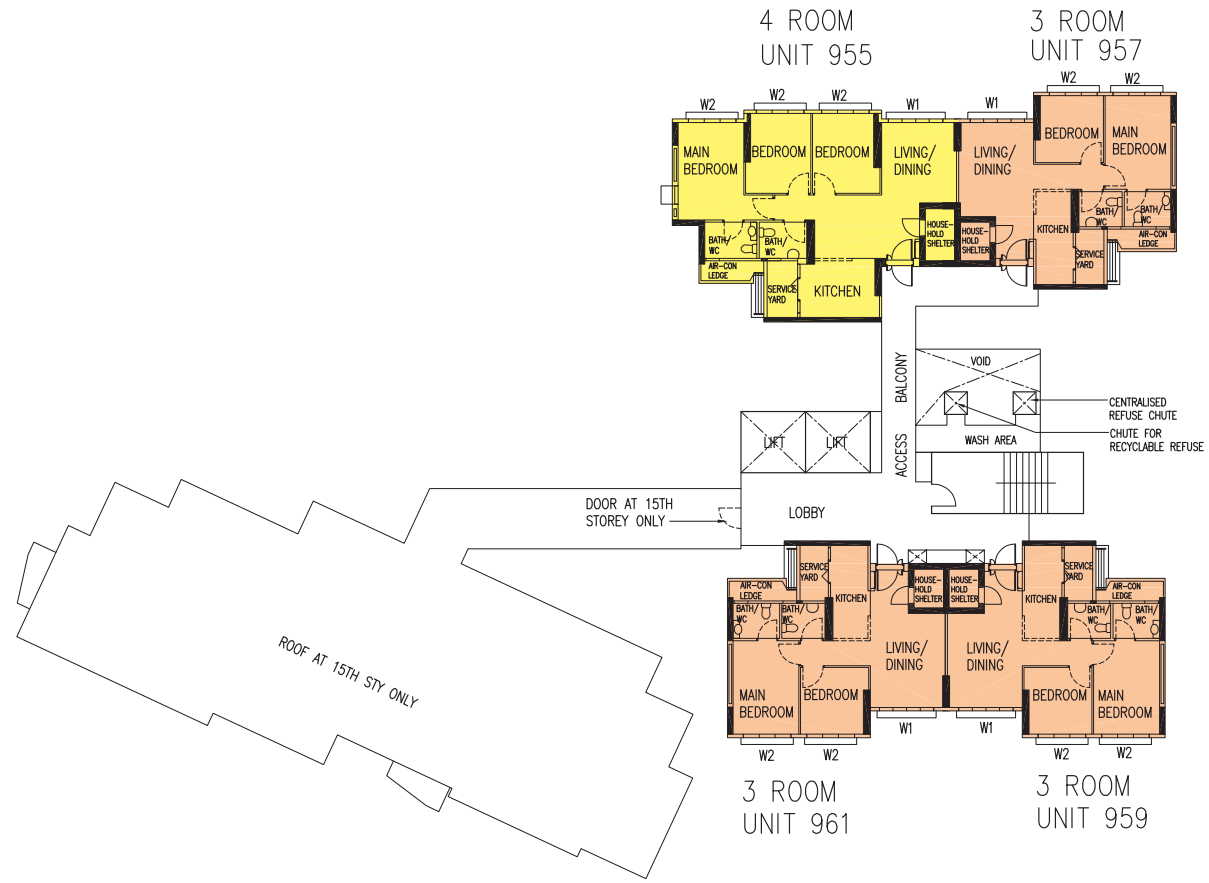


BLK 325B
(10TH TO 14TH STOREY FLOOR PLAN)

- LEGEND:
UNLESS OTHERWISE INDICATED ALL WINDOWS WILL BE STANDARD HEIGHT WINDOWS
- 3 ROOM
 - 4 ROOM
 - 5 ROOM
- W1 - FULL HEIGHT WINDOW (APPROX. 300mm HIGH PARAPET WALL)
W2 - THREE QUARTER HEIGHT WINDOW (APPROX. 550mm HIGH PARAPET WALL)
CW - THREE QUARTER HEIGHT CORNER WINDOW (APPROX. 550mm HIGH PARAPET WALL)

The coloured floor plan is not intended to demarcate the boundary of the flat.





BLK 325B

(15TH TO 20TH STOREY FLOOR PLAN)

LEGEND:

UNLESS OTHERWISE INDICATED ALL WINDOWS WILL BE STANDARD HEIGHT WINDOWS

3 ROOM

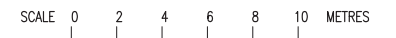
4 ROOM

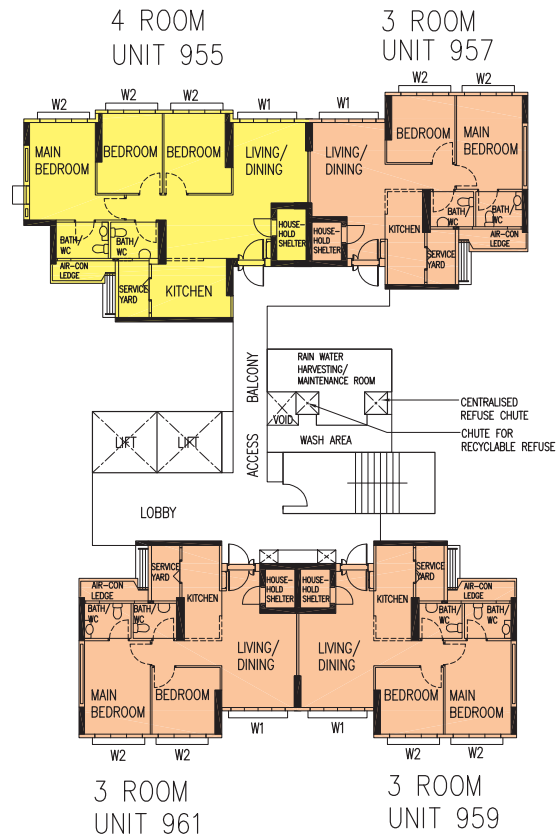
W1 - FULL HEIGHT WINDOW (APPROX. 300mm HIGH PARAPET WALL)

W2 - THREE QUARTER HEIGHT WINDOW (APPROX. 550mm HIGH PARAPET WALL)

CW - THREE QUARTER HEIGHT CORNER WINDOW (APPROX. 550mm HIGH PARAPET WALL)

The coloured floor plan is not intended to demarcate the boundary of the flat.





LEGEND:

UNLESS OTHERWISE INDICATED ALL WINDOWS WILL BE STANDARD HEIGHT WINDOWS

3 ROOM

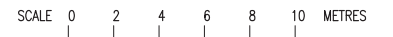
4 ROOM

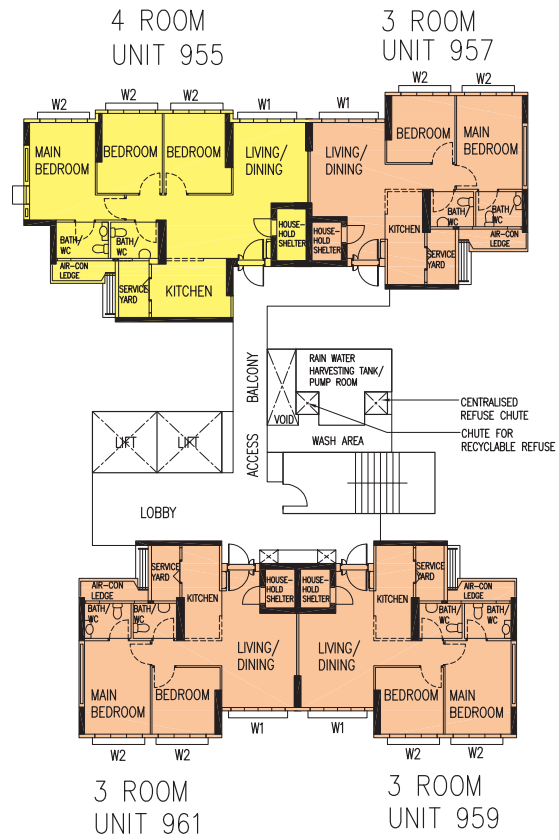
W1 - FULL HEIGHT WINDOW (APPROX. 300mm HIGH PARAPET WALL)

W2 - THREE QUARTER HEIGHT WINDOW (APPROX. 550mm HIGH PARAPET WALL)

CW - THREE QUARTER HEIGHT CORNER WINDOW (APPROX. 550mm HIGH PARAPET WALL)

The coloured floor plan is not intended to demarcate the boundary of the flat.





BLK 325B

(22ND STOREY FLOOR PLAN)

LEGEND:

UNLESS OTHERWISE INDICATED ALL WINDOWS WILL BE STANDARD HEIGHT WINDOWS

3 ROOM

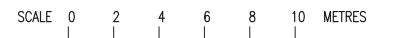
4 ROOM

W1 - FULL HEIGHT WINDOW (APPROX. 300mm HIGH PARAPET WALL)

W2 - THREE QUARTER HEIGHT WINDOW (APPROX. 550mm HIGH PARAPET WALL)

CW - THREE QUARTER HEIGHT CORNER WINDOW (APPROX. 550mm HIGH PARAPET WALL)

The coloured floor plan is not intended to demarcate the boundary of the flat.



General Specifications For Punggol BayView

Foundation

Piled foundations.

Structure

Reinforced concrete structural framework with reinforced concrete slabs.

Roof

Reinforced concrete roof slab with precast concrete secondary roofing.

Walls

All external and internal walls are constructed with reinforced concrete/solid blocks/bricks with cement plastering/precast panels/precast lightweight concrete partitions/drywall partition system.

Windows

Aluminium framed windows with tinted glass.

Doors

Entrance	: decorative solid timber door and metal gate
Bedrooms	: decorative solid timber doors (Type D10) (optional)
Bathrooms/WC	: laminated semi-solid timber doors (Type D10a) (optional)
Household Shelter	: metal door
Service Yard	: aluminium framed door with glass
Balcony	: aluminium framed door with glass

Finishes

Ceilings	: skim coated or plastered and painted
Kitchen/Bathrooms/WC walls	: ceramic tiles
Other Walls	: skim coated or plastered and painted
Living/Dining floor	: polished porcelain tiles with timber skirting (optional)
Bedrooms floor	: timber strip flooring with timber skirting (optional)
Kitchen floor	: glazed porcelain tiles
Bathrooms/WC floor	: ceramic tiles
Service Yard floor	: glazed porcelain tiles with tile skirting
Household shelter floor	: glazed porcelain tiles
Balcony floor(where applicable)	: glazed porcelain tiles with tile skirting (optional)

Fittings

Quality locksets
Water Closet suite
Vanity top wash basin at attached Bathroom/WC, wash basin for other Bathroom/WC (optional)
Bath/Shower mixer with shower set, tap mixer (optional)
Clothes Drying Rack

Services

Gas services and concealed water supply pipes
Concealed electrical wiring to lighting and power points (including water heater and air-conditioning points)
Television points
Telephone points

Important Notes:

- 1) The Household Shelter is designed for use as civil defence shelter. The walls, ceiling, floor and door of the Household Shelter shall not be hacked, drilled, altered or removed.
- 2) Air-con panel in the main bedroom will not be provided.
- 3) Any unused or unoccupied open spaces in front of or nearby / adjacent to the flat units are not available for purchase and that the HDB will not entertain any requests from the flat owners to purchase and / or enclose the unused or unoccupied open spaces.

You are advised to visit HDB's website at www.hdb.gov.sg for information on renovation rules.

Disclaimer

- (i) All information, maps and plans in this brochure are the copyright of the HDB.
- (ii) The information provided in this brochure are not statements or representations of fact. They are not intended to form part of any offer or contract for the sale of the flats.
- (iii) Visual representations like pictures, art renderings, depictions, illustrations, photographs, drawings and other graphic representations and references are only artistic impressions. They are not representations of fact.
- (iv) The information on this project including but not limited to the dimensions, areas, plans, colour schemes, descriptions and specifications are subject to change or review without notice at HDB's sole discretion or if required by the competent authorities.
- (v) HDB may at any time, without any notice and at its sole discretion, change any aspect of this project, including but not limited to the omission, amalgamation, increasing or reducing the number of communal facilities, amenities, colour schemes, design features and specifications shown.
- (vi) HDB will not entertain any request for alteration of the layout or specifications of a flat, to suit individual needs.
- (vii) HDB does not warrant the accuracy of the information and will not be responsible in any way for any inaccuracy or omission of information in the brochure or for any loss suffered by any person as a result of relying on the information.
- (viii) The floor areas are scaled strata areas.
- (ix) The proposed facilities, their locations and surrounding land-use shown in the maps and plans are indicative only and subject to change or review. These facilities may include other ancillary uses allowed under URA's prevailing Development Control guidelines.
- (x) HDB reserves the right to use the void deck in any apartment block for facilities such as child care centres, elderly-related facilities, education centres, residents' committee centres, day activity centres and such other facilities as HDB shall deem fit.

