

KEAT HONG  UAD



HAVE A CUPPA'

BUILD-TO-ORDER SEP 2012



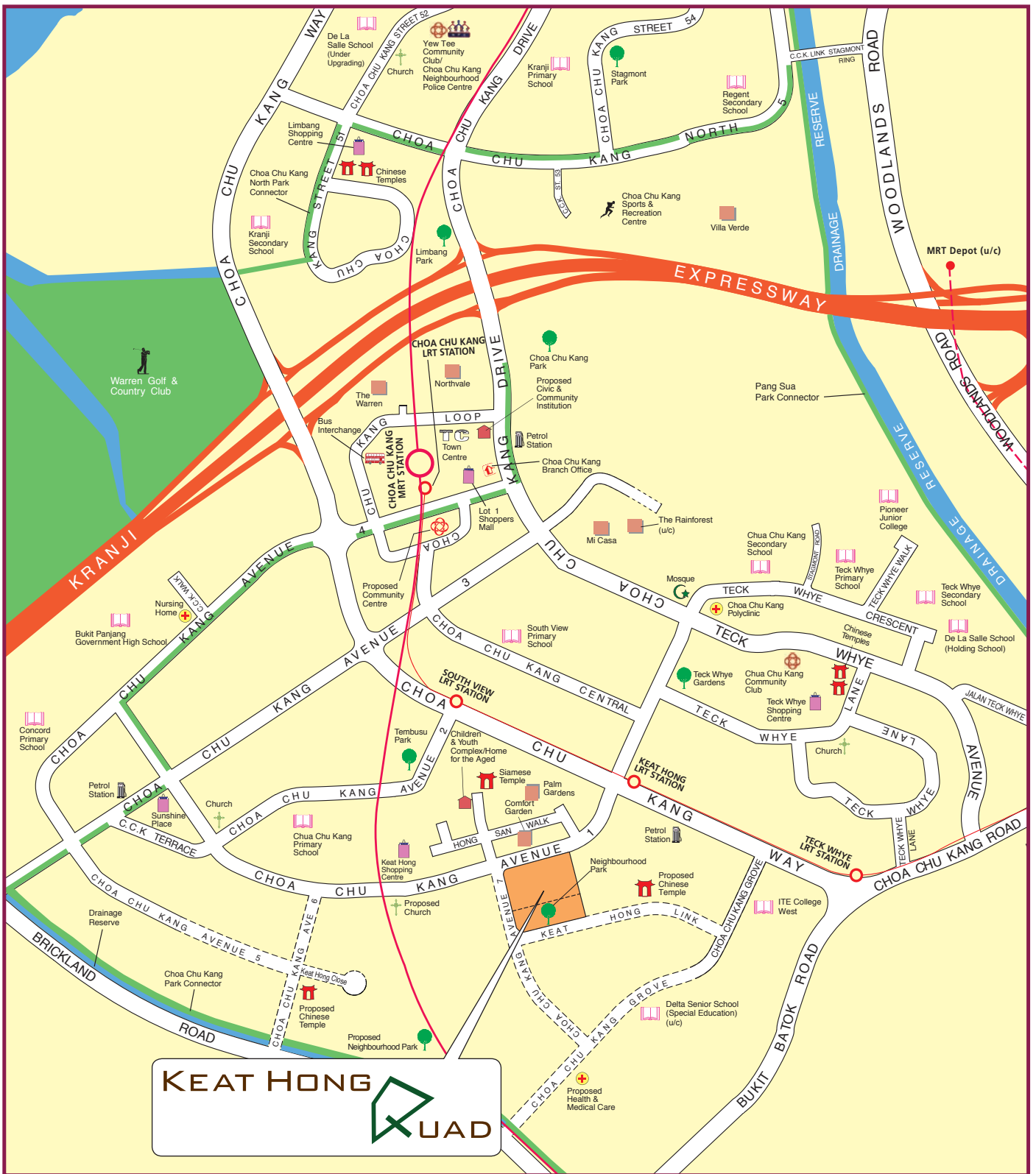
Artist's Impression

Pleasant Residences

Bounded by Choa Chu Kang Avenue 1 and Choa Chu Kang Avenue 7, Keat Hong Quad comprises one 19-storey and two 20-storey residential blocks. Choose from 524 units of 4-room and 5-room Standard flats.

To honour the unique heritage of the area as a former military camp, this development has been named Keat Hong Quad. The heart of the development features a prominent quadrangle space.





LEGEND:

- MRT Line & Station
- LRT Line & Station
- Under Construction/Future Road
- (u/c) Under Construction



Notes:

All proposed developments are subject to change and planning approval.
 Proposed Civic & Community Institution includes examples like Community Centre/Club, Association, Home for the Aged, etc., subject to change and planning approval.
 Proposed Health & Medical Care (eg. Nursing Home), subject to change and planning approval.



Modern conveniences around you

For your daily shopping and dining needs, Keat Hong Shopping Centre is the place to go to. Go marketing at the wet market place for fresh produce or take your family for a meal at the eating outlets. Alternatively, head over to Sunshine Place, Teck Whye Shopping Centre or Lot 1 Shoppers' Mall in Choa Chu Kang Town Centre for more shopping and dining options. Find out more about the heartland shops around you by logging on to www.hdb.gov.sg/where2shop.



Enjoy a leisurely walk or a relaxing jog at the Choa Chu Kang Park Connector located nearby. More workout options can be found at the Choa Chu Kang Sports and Recreation Centre which hosts a stadium, swimming pool, sports hall and more. You can also pick up new hobbies at the Chua Chu Kang Community Club.



Commute with ease with Keat Hong LRT station just a short walk away. The Kranji Expressway (KJE) provides connectivity to the rest of Singapore.



Schools in the area include Chua Chu Kang Primary School, South View Primary School, Bukit Panjang Government High School, Pioneer Junior College and ITE College West.





Relax and Reflect

Keat Hong Quad features modern architecture with sleek and clean vertical lines, providing the development with a contemporary look and identity.

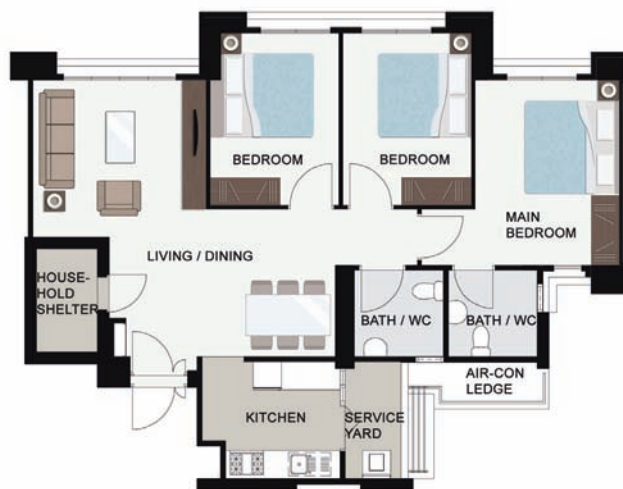
Relax and unwind at the central open space which encompasses a range of recreational and communal facilities. Children can have fun in the children's playground while the adults and elderly can work out at the fitness stations. Take a leisurely stroll through the landscaped garden or chat with your family and friends at the resting shelters provided. Large social gatherings can be held at the precinct pavilion to enhance communal bonding.



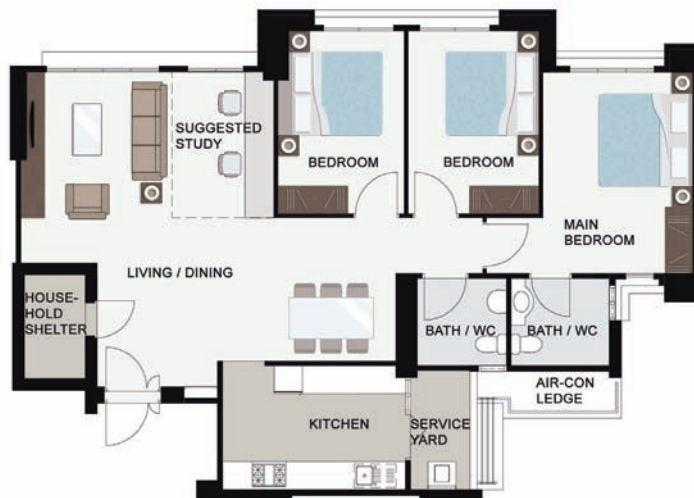
Delightful Homes

Keat Hong Quad offers 4- and 5-room Standard Flats. All units come with three-quarter height windows in the living/dining area and half-height windows in the other rooms.

These flats come with floor finishes in the kitchen, household shelter, service yard and bathrooms. For added convenience, you can opt in to have floor finishes in the living/ dining room and bedrooms of your selected flat. You may also opt in to have sanitary fittings in the bathrooms - wash basin, water tap and shower mixer. These sanitary fittings, together with internal doors, will be offered as a package. The cost of installing these optional components will be added to the selling price of the flat.



LAYOUT IDEAS FOR
4-ROOM
APPROX FLOOR AREA 93 sqm
(Inclusive of internal floor area of 90 sqm and Air-con ledge)



LAYOUT IDEAS FOR
5-ROOM
APPROX FLOOR AREA 113 sqm
(inclusive of Internal Floor Area of 110 sqm and Air-con ledge)