

 Golden
Saffron



HAVE A CUPPA'

BUILD-TO-ORDER SEP 2012



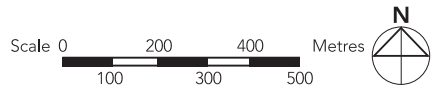
Artist's Impression

Spice of Life

Located at Woodlands Circle, Golden Saffron comprises one 14-storey residential block of 128 Studio Apartments.

Golden Saffron is named after the spice "Saffron" which is known for its intense flavour, bright colour and strong aroma. The name "Golden Saffron" symbolises strength, independence and a distinctive charisma. Drawing inspiration from the bright colouring which Saffron imparts to food, yellow and orange hues are reflected in Golden Saffron's facade for a vibrant look.





LEGEND:

- MRT Line & Station
- Future Road
- (u/c) Under Construction
- Future North-South Expressway (NSE)

Notes:
 All proposed developments are subject to change and planning approval.
 Proposed Civic & Community Institution includes examples like Community Centre/Club, Association, Home for the Aged, etc., subject to change and planning approval.
 Proposed Health & Medical Care (eg. Nursing Home), subject to change and planning approval.
 Proposed Place of Worship includes examples like Church, Mosque, Chinese Temple, Hindu Temple, etc., subject to change and planning approval.



Enjoy a modern lifestyle

Stroll over to the nearby Woodlands Mart for your daily necessities. More shopping and dining options are available at Admiralty Place, Causeway Point and Woodlands Civic Centre. Log on to www.hdb.gov.sg/where2shop to find out more about the heartland shops in the town.

Nature lovers will appreciate the nearby parks. Enjoy outdoor spaces at Circle Green, Woodlands Crescent Park, Woodlands Town Garden and Woodlands Waterfront. Other leisure options include working out at Woodlands sports hall, stadium and swimming complex. You can also choose to participate in activities organised by the Woodlands Galaxy Community Club.



Commute with ease with the public bus services, Woodlands MRT station and Admiralty MRT station. Those who drive will enjoy the accessibility provided by the Seletar Expressway (SLE).



Nearby schools include Evergreen Primary, Evergreen Secondary and Admiralty Primary School. Innova Junior College, Republic Polytechnic and Singapore Sports School are also located in the town.





Artist's Impression

A charming development beckons

Golden Saffron is a charming retreat designed with your well being in mind. Keep fit at the elderly fitness station within the development. Get a free foot massage on the reflexology path. If you prefer group activities such as line dancing and tai-chi, the precinct pavilion serves as an ideal spot. For quiet respite, head over to the landscaped roof garden on the 2nd storey. This cosy roof garden has seats and shelters where residents can gather for a game of chess or friendly chatter.



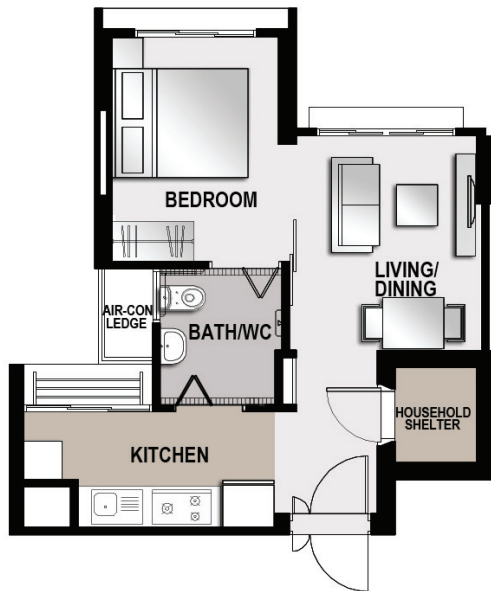
Golden Saffron is equipped with specially designed features to let residents feel comfortable and secure. Suitably located support grab bars at common areas and ramps assist residents in moving around the development. In addition, the lifts within the development come with rounded handrails, infrared sensors at lift doors, delay closing action buttons and large help call buttons to safeguard the safety of residents.

Cosy homes

These Studio Apartments are designed specially to meet the needs of those 55 years old and above. Each Studio Apartment comes with a built-in kitchen cabinet with cooker hood and stove. Buyers can choose from two height options for the kitchen cabinet – default dimensions based on industry standard or lowered cabinets to suit the needs of wheelchair bound residents. For the convenience of residents, elderly-friendly fixtures are also provided within the units. These include grab bars to provide support, a ramp at the unit entrance to assist movement, bigger switches and an alert alarm system.



Move in hassle-free as each Studio Apartment will be in a ready-to-move-in condition. Each apartment will be furnished with a built-in wardrobe, floor tiles in the entire flat and wall tiles in the bathroom and kitchen. Three-quarter height windows will be provided in the living/dining area and bedroom.



LAYOUT IDEAS FOR STUDIO APARTMENT (TYPE A)

APPROX. FLOOR AREA 37 sqm
(inclusive of Internal Floor Area of 35 sqm and Air-Con Ledge)



LAYOUT IDEAS FOR STUDIO APARTMENT (TYPE B)

APPROX. FLOOR AREA 47 sqm
(inclusive of Internal Floor Area of 45 sqm and Air-Con Ledge)